



DEPARTMENT OF THE ARMY
U.S. ARMY CORPS OF ENGINEERS, MOBILE DISTRICT
600 VESTAVIA PARKWAY, SUITE 203
THE SHELBY BUILDING
VESTAVIA HILLS, ALABAMA 35216

CESAM-RD-N
PUBLIC NOTICE NO. SAM-2022-00371-JDC

November 14, 2022

JOINT PUBLIC NOTICE
U.S. ARMY CORPS OF ENGINEERS

STATE OF ALABAMA
DEPARTMENT OF ENVIRONMENTAL MANAGEMENT

REQUEST TO RETAIN UNAUTHORIZED FILL IN WETLANDS ASSOCIATED WITH
THE CONSTRUCTION OF A RETAIL DEVELOPMENT IN COOK SPRINGS, ST. CLAIR
COUNTY, ALABAMA

TO WHOM IT MAY CONCERN: This District has received an application for a Department of the Army (DA) permit pursuant to Section 404 of the Clean Water Act (33 U.S.C. 1344). Please communicate this information to interested parties.

APPLICANT: The Broadway Group, LLC
216 Westside Square
Huntsville, Alabama 35801

AGENT: ARC Environmental, Inc.
Attention: Michelle Campbell
Post Office Box 190
Brownsboro, Alabama 35741
mcampbell@arcco.org

LOCATION: The proposed project is located in wetlands in Cook Springs, St. Clair County, Alabama. Specifically, the project is located within Section 2, Township 17 South, Range 2 East. Center coordinates of the project are latitude 33.588322, longitude -86.396746. The project is located in the Middle Coosa 8-digit hydrologic unit code (HUC 03150106).

PROJECT PURPOSE: The basic project purpose is the construction of a retail facility.

PROPOSED WORK: The applicant is requesting after-the-fact authorization to retain the unauthorized discharge of fill material into waters of the United States (U.S.) in association with the construction of a new retail development. Specifically, the unauthorized impacts involved the discharge of fill material into 1.27 acres of forested wetlands associated with the construction of a new 10,566-

square foot Dollar General store and attendant features such as an adjacent parking lot, ingress/egress roads, and utilities.

AVOIDANCE & MINIMIZATION: According to the applicant, nine (9) alternative sites were considered prior to the selection of the current site. The original on-site construction plan proposed to impact approximately 1.76 acres of wetlands. The project design was re-evaluated and modified to minimize impacts to waters of the U.S., which included relocating the septic system to an upland location avoiding impacts to 0.5-acre of wetland. The U.S. Army Corps of Engineers (USACE) has not verified the adequacy of the applicant's avoidance and minimization efforts at this time.

COMPENSATORY MITIGATION: The applicant proposes to purchase wetland credits from an approved mitigation bank.

The applicant will apply for certification from the State of Alabama in accordance with Section 401(a) (1) of the Clean Water Act. Upon completion of the required advertising and public comment review, a determination relative to water quality certification will be made by the Alabama Department of Environmental Management.

This public notice is being distributed to all known interested persons in order to assist in developing facts on which a decision by the USACE can be based. For accuracy and completeness of the record, all data in support of or in opposition to the proposed work should be submitted in writing setting forth sufficient detail to furnish a clear understanding of the reasons for support or opposition. The decision whether to issue a permit will be based on an evaluation of the probable impact, including cumulative impacts, of the proposed activity on the public interest. That decision will reflect the national concern for both protection and use of important resources. The benefit which reasonably may be expected to accrue from the proposal must be balanced against its reasonably foreseeable detriments. All factors which may be relevant to the proposal will be considered, including the cumulative effects thereof; among those are conservation, economics, aesthetics, general environmental concerns, wetlands, cultural values, fish and wildlife values, flood hazards, flood plain values, land use, navigation, shoreline erosion and accretion, recreation, water supply and conservation, water quality, energy needs, safety, food production, and in general, the needs and welfare of the people. The USACE is soliciting comments from the public; Federal, State, and local agencies and officials; Indian Tribes; and other interested parties in order to consider and evaluate the impacts of this proposed activity. Any comments received will be considered by the USACE to determine whether to issue, modify, condition or deny a permit for this proposal. To make this decision, comments are used to assess impacts on endangered species, historic properties, water quality, general environmental effects, and the other public interest factors listed above. Comments are used in the preparation of an Environmental Assessment and/or an Environmental Impact Statement pursuant to the National Environmental Policy Act.

Comments are also used to determine the need for a public hearing and to determine the overall public interest of the proposed activity. Any person may request, in writing, within the comment period specified in this notice, that a public hearing be held to consider this application. Requests for public hearings shall state with particularity, the reasons for holding a public hearing.

Evaluation of the probable impacts involving deposits of dredged or fill material into waters of the United States will include the application of guidelines established by the Administrator of the U.S. Environmental Protection Agency.

HISTORIC PROPERTIES: In accordance with Section 106 of the National Historic Preservation Act and Appendix C of 33 CFR 325, the undertaking defined in this notice is being considered for the potential to affect cultural and historic properties within the permit area. The USACE has not made a determination of effects to historic properties at this time. We are seeking comment from the State Historic Preservation Officer, federally recognized American Indian tribes, local historical societies, museums, universities, the National Park Service, and the general public regarding the existence or the potential for existence of significant cultural and historic properties which may be affected by the work. Further coordination with the State Historic Preservation Officer and/or federally-recognized American Indian tribes will be performed as determined to be appropriate.

ENDANGERED/THREATENED SPECIES: Preliminary review of this application and the U.S. Department of the Interior List of Endangered and Threatened Species indicates the following species have the potential to occur in the project watershed: gray bat, Indiana bat, Northern long-eared bat, Coosa moccasinshell, finelined pocketbook, ovate clubshell, Southern clubshell, Southern pigtoe, triangular kidneyshell, and upland combshell. An effects determination will be made during the evaluation process, at which time the USACE will initiate consultation with the United States Fish and Wildlife Service (USFWS), as appropriate. Copies of this public notice are being sent to the USFWS and other federal and state agencies for review and receipt of any relevant comments regarding potential effects of the proposed project on the listed species.

Correspondence concerning this Public Notice should refer to Public Notice Number **SAM-2022-00371-JDC** and should be directed to the District Engineer, U.S. Army Corps of Engineers Mobile District, Birmingham Field Office, Attention: **Mr. Jevon Coleman**, 600 Vestavia Parkway, Suite 203, Vestavia Hills, Alabama 35216, with a copy to the Alabama Department of Environmental Management, Field Operations Division, Office of Field Services, Attention: Mr. Richard Hulcher, Post Office Box 301463, Montgomery, Alabama 36130-1463. Comments may also be submitted via e-mail to USACE at **Jevon.D.Coleman@usace.army.mil** and to ADEM at **fieldmail@adem.alabama.gov**.

Comments should be received no later than **30 days** from the date of this Public Notice. If you have any questions concerning this publication, you may contact the project manager via e-mail at **Jevon.D.Coleman@usace.army.mil** or telephone number **(205) 381-0741**. Please refer to the above Public Notice number.

For additional information about our Regulatory Program, please visit our web site at <http://www.sam.usace.army.mil/Missions/Regulatory.aspx>.

MOBILE DISTRICT
U.S. Army Corps of Engineers

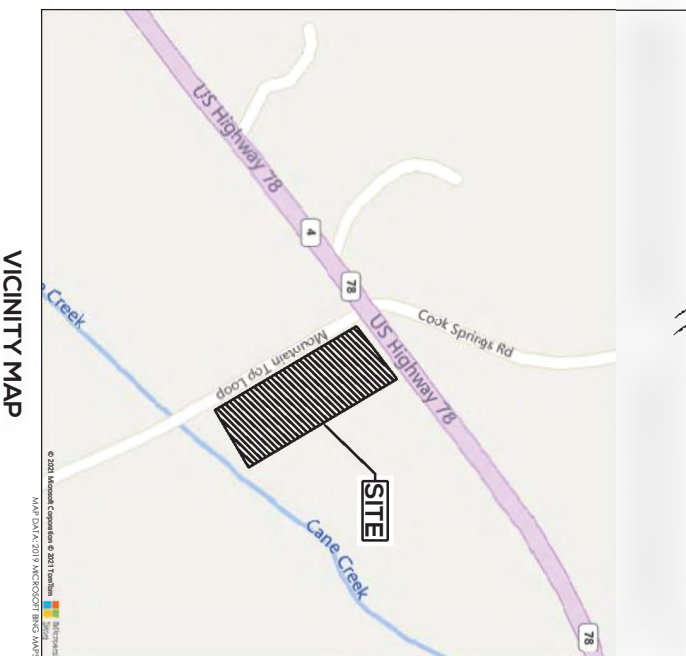
Attachments

CONSTRUCTION PLANS FOR
PROPOSED RETAIL STORE
 PREPARED FOR THE BROADWAY GROUP, LLC
 MOUNTAIN TOP LOOP - PELL CITY, ALABAMA
 SECTION 2, TOWNSHIP 17 SOUTH, RANGE 2 EAST - ST. CLAIR COUNTY

PROJECT NOTES

1. PROJECT OWNER/DEVELOPER INFORMATION
 THE BROADWAY GROUP, LLC
 216 WESTSIDE SQUARE
 HUNTSVILLE, ALABAMA 35801
 256-533-7287

2. GOVERNING MUNICIPALITY
 ST. CLAIR COUNTY



VICINITY MAP

INDEX TO DRAWINGS:

Sheet Number	Sheet Title
0	COVER SHEET
1	PROJECT NOTES
2	EXISTING CONDITIONS & DEMO PLAN
3	SITE PLAN
4	FLOODPLAIN LOCATION PLAN
5	LAYOUT PLAN
6	GRADING & EROSION CONTROL PLAN
7	STORM DRAINAGE PLAN
8	PROJECT DETAILS
9	PROJECT DETAILS
10	PROJECT DETAILS

REVISIONS

Date	Description
2021-09-03	INITIAL ISSUANCE
2021-09-23	PAVEMENT WIDENING AT INTERSECTION
2021-10-22	PAVEMENT WIDENING AND GRADING MODIFICATION AT DRIVEWAY ENTRANCE
2021-11-01	REVISED ALDOT INTERSECTION & SITE ENTRANCE GEOMETRY
2021-12-17	REVISED ALDOT INTERSECTION & SITE ENTRANCE GEOMETRY & MADE GRADING MODIFICATION IN THAT AREA
2022-02-11	REVISED ALDOT INTERSECTION & SITE ENTRANCE GEOMETRY
2022-05-24	FIBER OPTIC CONFLICT REVISIONS

NO SCALE

NEW RETAIL STORE - PELL CITY, AL
 PREPARED FOR THE BROADWAY GROUP LLC
 ST. CLAIR COUNTY, ALABAMA

SECTION 2 - TOWNSHIP 17 SOUTH - RANGE 2 EAST

Civil Engineering | Land Surveying | Landscape Architecture
 Environmental | Water Resources | Laser Scanning | Modeling



1001 22nd Street South | 7500 Memorial Pkwy SW, Ste 209
 Birmingham, Alabama 35205 | Huntsville, Alabama 35802
 205.325.6166 | 256.639.1221

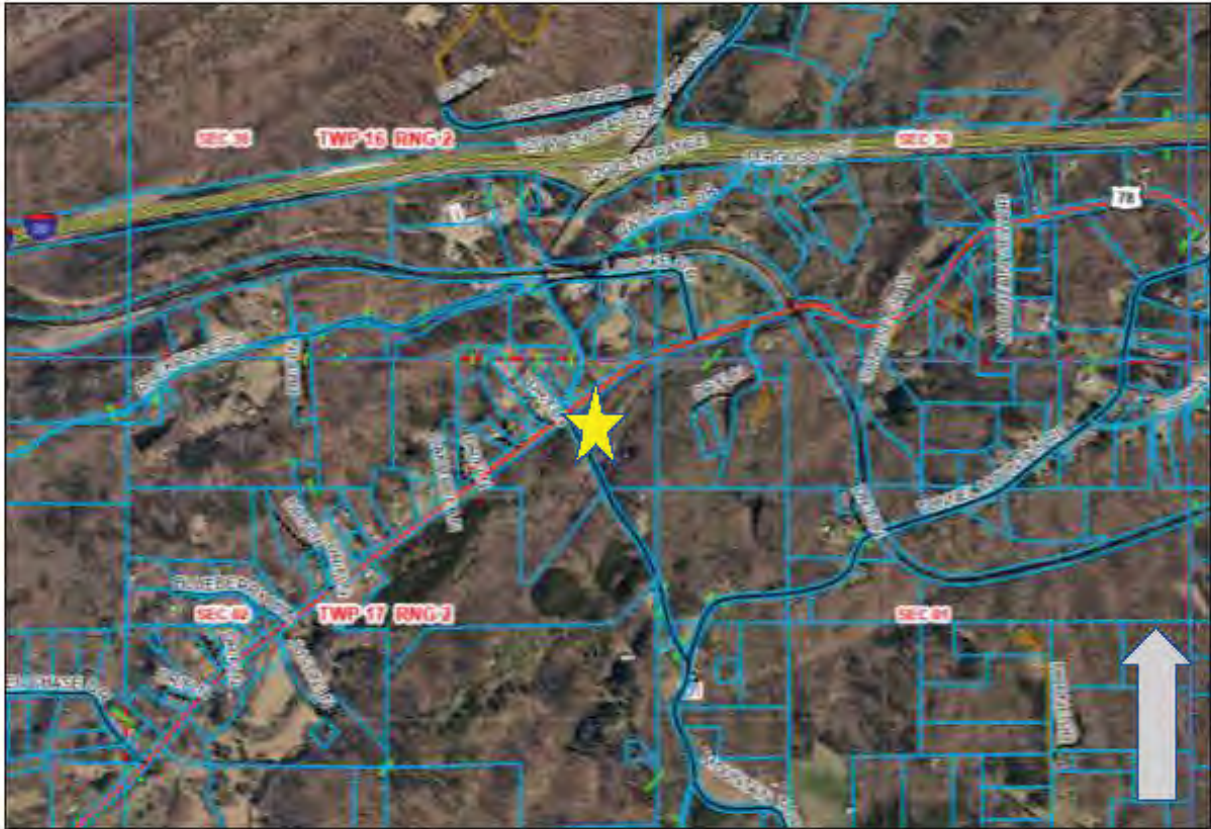
COVER SHEET

DATE:	05/24/2022
DRAWN BY:	JACARIE BULL
CHECKED BY:	JACARIE BULL
PROJECT NO.:	2128140

0

LOCATION MAP

Mountain Top Loop / US Highway 78
Pell City, St. Clair County, Alabama
Coordinates: 33.588305, -86.396934



Adjacent Property Owners Map

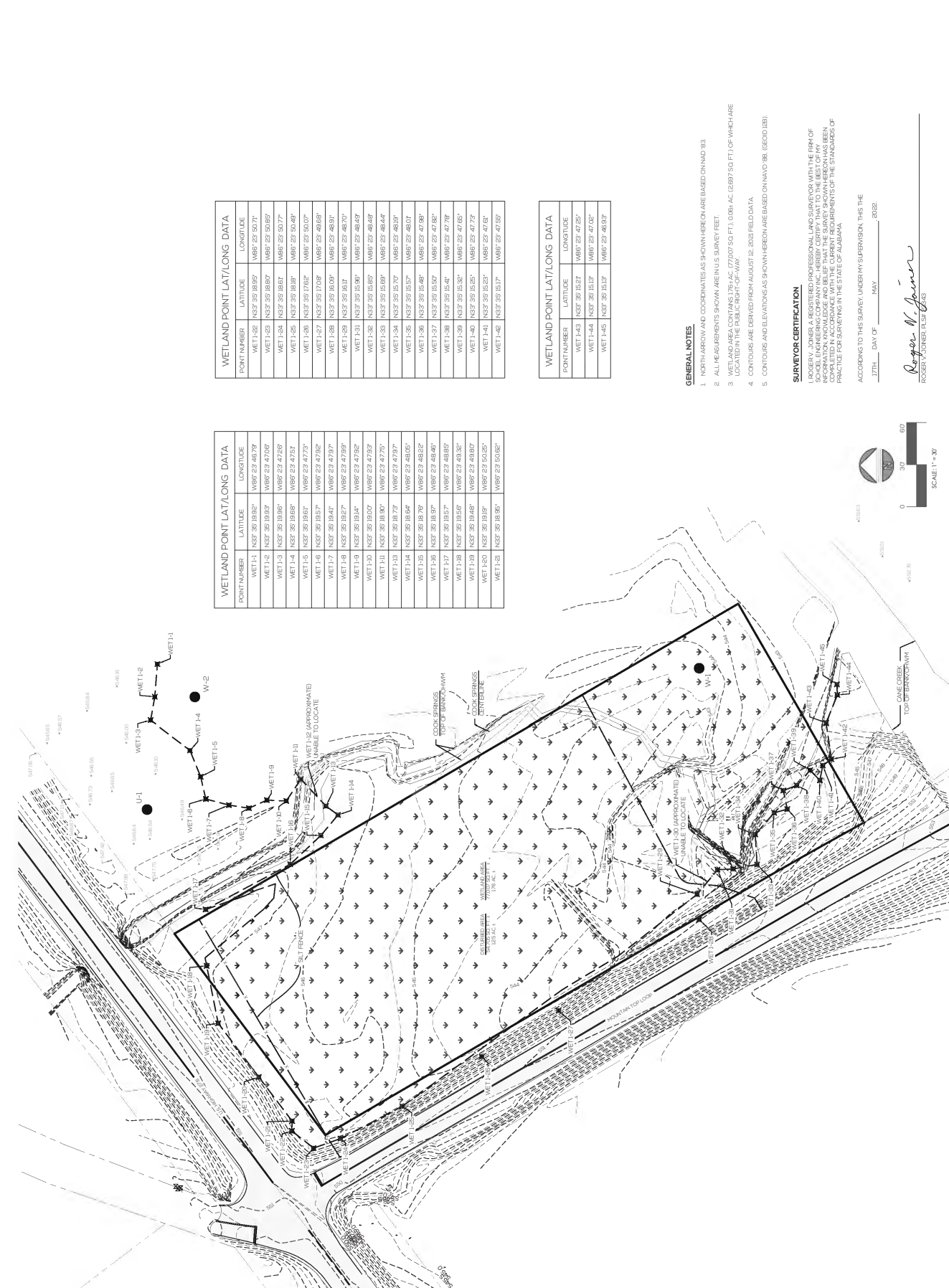




REVISIONS:
 COMMENTS: J.E.S. 03.16.2022
 COMMENTS: J.M.M. 03.17.2022

WETLAND DELINEATION

DATE: 05.11.22
 DRAWN BY: J. MOTHERSHED
 CHECKED BY: R. JOINER
 PROJECT NO.: 210328H1
 FIELD CRYK: R. JOINER



WETLAND POINT LAT/LONG DATA

POINT NUMBER	LATITUDE	LONGITUDE
WET 1-1	N32° 39' 19.89"	W86° 29' 50.71"
WET 1-2	N32° 39' 19.89"	W86° 29' 50.71"
WET 1-3	N32° 39' 19.89"	W86° 29' 50.71"
WET 1-4	N32° 39' 19.89"	W86° 29' 50.71"
WET 1-5	N32° 39' 19.89"	W86° 29' 50.71"
WET 1-6	N32° 39' 19.89"	W86° 29' 50.71"
WET 1-7	N32° 39' 19.89"	W86° 29' 50.71"
WET 1-8	N32° 39' 19.89"	W86° 29' 50.71"
WET 1-9	N32° 39' 19.89"	W86° 29' 50.71"
WET 1-10	N32° 39' 19.89"	W86° 29' 50.71"
WET 1-11	N32° 39' 19.89"	W86° 29' 50.71"
WET 1-12	N32° 39' 19.89"	W86° 29' 50.71"
WET 1-13	N32° 39' 19.89"	W86° 29' 50.71"
WET 1-14	N32° 39' 19.89"	W86° 29' 50.71"
WET 1-15	N32° 39' 19.89"	W86° 29' 50.71"
WET 1-16	N32° 39' 19.89"	W86° 29' 50.71"
WET 1-17	N32° 39' 19.89"	W86° 29' 50.71"
WET 1-18	N32° 39' 19.89"	W86° 29' 50.71"
WET 1-19	N32° 39' 19.89"	W86° 29' 50.71"
WET 1-20	N32° 39' 19.89"	W86° 29' 50.71"
WET 1-21	N32° 39' 19.89"	W86° 29' 50.71"
WET 1-22	N32° 39' 19.89"	W86° 29' 50.71"
WET 1-23	N32° 39' 19.89"	W86° 29' 50.71"
WET 1-24	N32° 39' 19.89"	W86° 29' 50.71"
WET 1-25	N32° 39' 19.89"	W86° 29' 50.71"
WET 1-26	N32° 39' 19.89"	W86° 29' 50.71"
WET 1-27	N32° 39' 19.89"	W86° 29' 50.71"
WET 1-28	N32° 39' 19.89"	W86° 29' 50.71"
WET 1-29	N32° 39' 19.89"	W86° 29' 50.71"
WET 1-30	N32° 39' 19.89"	W86° 29' 50.71"
WET 1-31	N32° 39' 19.89"	W86° 29' 50.71"
WET 1-32	N32° 39' 19.89"	W86° 29' 50.71"
WET 1-33	N32° 39' 19.89"	W86° 29' 50.71"
WET 1-34	N32° 39' 19.89"	W86° 29' 50.71"
WET 1-35	N32° 39' 19.89"	W86° 29' 50.71"
WET 1-36	N32° 39' 19.89"	W86° 29' 50.71"
WET 1-37	N32° 39' 19.89"	W86° 29' 50.71"
WET 1-38	N32° 39' 19.89"	W86° 29' 50.71"
WET 1-39	N32° 39' 19.89"	W86° 29' 50.71"
WET 1-40	N32° 39' 19.89"	W86° 29' 50.71"
WET 1-41	N32° 39' 19.89"	W86° 29' 50.71"
WET 1-42	N32° 39' 19.89"	W86° 29' 50.71"
WET 1-43	N32° 39' 19.89"	W86° 29' 50.71"
WET 1-44	N32° 39' 19.89"	W86° 29' 50.71"
WET 1-45	N32° 39' 19.89"	W86° 29' 50.71"
WET 1-46	N32° 39' 19.89"	W86° 29' 50.71"
WET 1-47	N32° 39' 19.89"	W86° 29' 50.71"
WET 1-48	N32° 39' 19.89"	W86° 29' 50.71"
WET 1-49	N32° 39' 19.89"	W86° 29' 50.71"
WET 1-50	N32° 39' 19.89"	W86° 29' 50.71"
WET 1-51	N32° 39' 19.89"	W86° 29' 50.71"
WET 1-52	N32° 39' 19.89"	W86° 29' 50.71"
WET 1-53	N32° 39' 19.89"	W86° 29' 50.71"
WET 1-54	N32° 39' 19.89"	W86° 29' 50.71"
WET 1-55	N32° 39' 19.89"	W86° 29' 50.71"

WETLAND POINT LAT/LONG DATA

POINT NUMBER	LATITUDE	LONGITUDE
WET 1-1	N32° 39' 19.89"	W86° 29' 50.71"
WET 1-2	N32° 39' 19.89"	W86° 29' 50.71"
WET 1-3	N32° 39' 19.89"	W86° 29' 50.71"
WET 1-4	N32° 39' 19.89"	W86° 29' 50.71"
WET 1-5	N32° 39' 19.89"	W86° 29' 50.71"
WET 1-6	N32° 39' 19.89"	W86° 29' 50.71"
WET 1-7	N32° 39' 19.89"	W86° 29' 50.71"
WET 1-8	N32° 39' 19.89"	W86° 29' 50.71"
WET 1-9	N32° 39' 19.89"	W86° 29' 50.71"
WET 1-10	N32° 39' 19.89"	W86° 29' 50.71"
WET 1-11	N32° 39' 19.89"	W86° 29' 50.71"
WET 1-12	N32° 39' 19.89"	W86° 29' 50.71"
WET 1-13	N32° 39' 19.89"	W86° 29' 50.71"
WET 1-14	N32° 39' 19.89"	W86° 29' 50.71"
WET 1-15	N32° 39' 19.89"	W86° 29' 50.71"
WET 1-16	N32° 39' 19.89"	W86° 29' 50.71"
WET 1-17	N32° 39' 19.89"	W86° 29' 50.71"
WET 1-18	N32° 39' 19.89"	W86° 29' 50.71"
WET 1-19	N32° 39' 19.89"	W86° 29' 50.71"
WET 1-20	N32° 39' 19.89"	W86° 29' 50.71"
WET 1-21	N32° 39' 19.89"	W86° 29' 50.71"
WET 1-22	N32° 39' 19.89"	W86° 29' 50.71"
WET 1-23	N32° 39' 19.89"	W86° 29' 50.71"
WET 1-24	N32° 39' 19.89"	W86° 29' 50.71"
WET 1-25	N32° 39' 19.89"	W86° 29' 50.71"
WET 1-26	N32° 39' 19.89"	W86° 29' 50.71"
WET 1-27	N32° 39' 19.89"	W86° 29' 50.71"
WET 1-28	N32° 39' 19.89"	W86° 29' 50.71"
WET 1-29	N32° 39' 19.89"	W86° 29' 50.71"
WET 1-30	N32° 39' 19.89"	W86° 29' 50.71"
WET 1-31	N32° 39' 19.89"	W86° 29' 50.71"
WET 1-32	N32° 39' 19.89"	W86° 29' 50.71"
WET 1-33	N32° 39' 19.89"	W86° 29' 50.71"
WET 1-34	N32° 39' 19.89"	W86° 29' 50.71"
WET 1-35	N32° 39' 19.89"	W86° 29' 50.71"
WET 1-36	N32° 39' 19.89"	W86° 29' 50.71"
WET 1-37	N32° 39' 19.89"	W86° 29' 50.71"
WET 1-38	N32° 39' 19.89"	W86° 29' 50.71"
WET 1-39	N32° 39' 19.89"	W86° 29' 50.71"
WET 1-40	N32° 39' 19.89"	W86° 29' 50.71"
WET 1-41	N32° 39' 19.89"	W86° 29' 50.71"
WET 1-42	N32° 39' 19.89"	W86° 29' 50.71"
WET 1-43	N32° 39' 19.89"	W86° 29' 50.71"
WET 1-44	N32° 39' 19.89"	W86° 29' 50.71"
WET 1-45	N32° 39' 19.89"	W86° 29' 50.71"
WET 1-46	N32° 39' 19.89"	W86° 29' 50.71"
WET 1-47	N32° 39' 19.89"	W86° 29' 50.71"
WET 1-48	N32° 39' 19.89"	W86° 29' 50.71"
WET 1-49	N32° 39' 19.89"	W86° 29' 50.71"
WET 1-50	N32° 39' 19.89"	W86° 29' 50.71"
WET 1-51	N32° 39' 19.89"	W86° 29' 50.71"
WET 1-52	N32° 39' 19.89"	W86° 29' 50.71"
WET 1-53	N32° 39' 19.89"	W86° 29' 50.71"
WET 1-54	N32° 39' 19.89"	W86° 29' 50.71"
WET 1-55	N32° 39' 19.89"	W86° 29' 50.71"

WETLAND POINT LAT/LONG DATA

POINT NUMBER	LATITUDE	LONGITUDE
WET 1-1	N32° 39' 19.89"	W86° 29' 50.71"
WET 1-2	N32° 39' 19.89"	W86° 29' 50.71"
WET 1-3	N32° 39' 19.89"	W86° 29' 50.71"
WET 1-4	N32° 39' 19.89"	W86° 29' 50.71"
WET 1-5	N32° 39' 19.89"	W86° 29' 50.71"
WET 1-6	N32° 39' 19.89"	W86° 29' 50.71"
WET 1-7	N32° 39' 19.89"	W86° 29' 50.71"
WET 1-8	N32° 39' 19.89"	W86° 29' 50.71"
WET 1-9	N32° 39' 19.89"	W86° 29' 50.71"
WET 1-10	N32° 39' 19.89"	W86° 29' 50.71"
WET 1-11	N32° 39' 19.89"	W86° 29' 50.71"
WET 1-12	N32° 39' 19.89"	W86° 29' 50.71"
WET 1-13	N32° 39' 19.89"	W86° 29' 50.71"
WET 1-14	N32° 39' 19.89"	W86° 29' 50.71"
WET 1-15	N32° 39' 19.89"	W86° 29' 50.71"
WET 1-16	N32° 39' 19.89"	W86° 29' 50.71"
WET 1-17	N32° 39' 19.89"	W86° 29' 50.71"
WET 1-18	N32° 39' 19.89"	W86° 29' 50.71"
WET 1-19	N32° 39' 19.89"	W86° 29' 50.71"
WET 1-20	N32° 39' 19.89"	W86° 29' 50.71"
WET 1-21	N32° 39' 19.89"	W86° 29' 50.71"
WET 1-22	N32° 39' 19.89"	W86° 29' 50.71"
WET 1-23	N32° 39' 19.89"	W86° 29' 50.71"
WET 1-24	N32° 39' 19.89"	W86° 29' 50.71"
WET 1-25	N32° 39' 19.89"	W86° 29' 50.71"
WET 1-26	N32° 39' 19.89"	W86° 29' 50.71"
WET 1-27	N32° 39' 19.89"	W86° 29' 50.71"
WET 1-28	N32° 39' 19.89"	W86° 29' 50.71"
WET 1-29	N32° 39' 19.89"	W86° 29' 50.71"
WET 1-30	N32° 39' 19.89"	W86° 29' 50.71"
WET 1-31	N32° 39' 19.89"	W86° 29' 50.71"
WET 1-32	N32° 39' 19.89"	W86° 29' 50.71"
WET 1-33	N32° 39' 19.89"	W86° 29' 50.71"
WET 1-34	N32° 39' 19.89"	W86° 29' 50.71"
WET 1-35	N32° 39' 19.89"	W86° 29' 50.71"
WET 1-36	N32° 39' 19.89"	W86° 29' 50.71"
WET 1-37	N32° 39' 19.89"	W86° 29' 50.71"
WET 1-38	N32° 39' 19.89"	W86° 29' 50.71"
WET 1-39	N32° 39' 19.89"	W86° 29' 50.71"
WET 1-40	N32° 39' 19.89"	W86° 29' 50.71"
WET 1-41	N32° 39' 19.89"	W86° 29' 50.71"
WET 1-42	N32° 39' 19.89"	W86° 29' 50.71"
WET 1-43	N32° 39' 19.89"	W86° 29' 50.71"
WET 1-44	N32° 39' 19.89"	W86° 29' 50.71"
WET 1-45	N32° 39' 19.89"	W86° 29' 50.71"
WET 1-46	N32° 39' 19.89"	W86° 29' 50.71"
WET 1-47	N32° 39' 19.89"	W86° 29' 50.71"
WET 1-48	N32° 39' 19.89"	W86° 29' 50.71"
WET 1-49	N32° 39' 19.89"	W86° 29' 50.71"
WET 1-50	N32° 39' 19.89"	W86° 29' 50.71"
WET 1-51	N32° 39' 19.89"	W86° 29' 50.71"
WET 1-52	N32° 39' 19.89"	W86° 29' 50.71"
WET 1-53	N32° 39' 19.89"	W86° 29' 50.71"
WET 1-54	N32° 39' 19.89"	W86° 29' 50.71"
WET 1-55	N32° 39' 19.89"	W86° 29' 50.71"

GENERAL NOTES

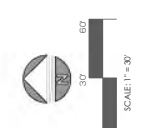
1. NORTH ARROW AND COORDINATES AS SHOWN HEREON ARE BASED ON NAD 83
2. ALL MEASUREMENTS SHOWN ARE IN U.S. SURVEY FEET.
3. WETLAND AREA CONTAINS 176.1 AC, (77,007.50 FT) OF WHICH ARE LOCATED IN THE PUBLIC RIGHT-OF-WAY.
4. CONTOURS ARE DERIVED FROM AUGUST 12, 2021 FIELD DATA
5. CONTOURS AND ELEVATIONS AS SHOWN HEREON ARE BASED ON NAVD 88 (GEOID 1283)

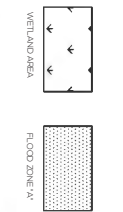
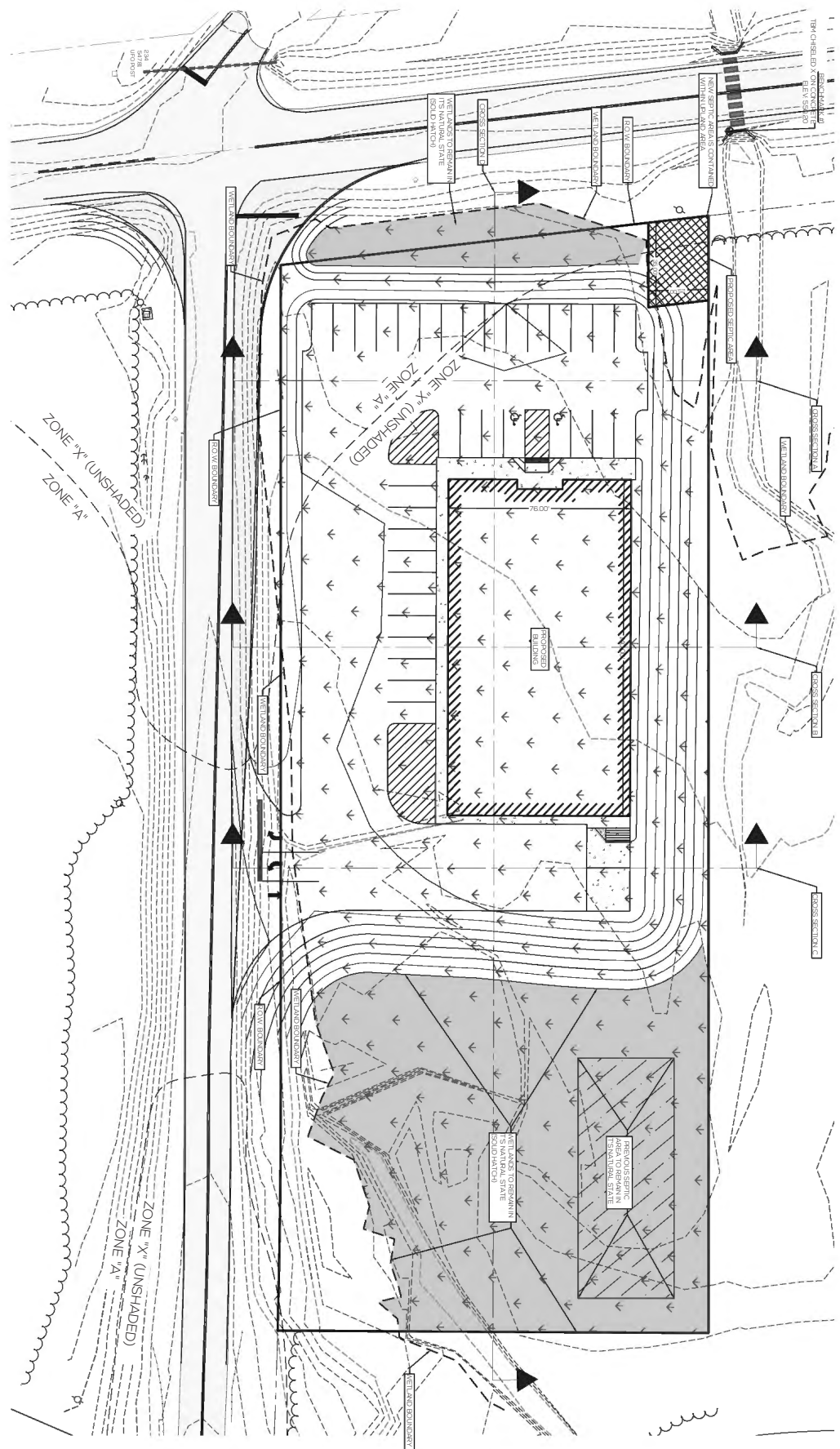
SURVEYOR CERTIFICATION

I, ROGER W. JOINER, A REGISTERED PROFESSIONAL LAND SURVEYOR WITH THE FIRM OF SCHÖBEL ENGINEERING COMPANY, INC., HEREBY CERTIFY THAT TO THE BEST OF MY KNOWLEDGE AND BELIEF, THIS SURVEY WAS CONDUCTED IN ACCORDANCE WITH THE STANDARDS OF PRACTICE FOR SURVEYING IN THE STATE OF ALABAMA.

ACCORDING TO THIS SURVEY, UNDER MY SUPERVISION, THIS THE
 _____ DAY OF _____ 2022.

Roger W. Joiner
 ROGER W. JOINER, PLS 13334





WETLANDS AND STREAMS

1	TOTAL PROJECT AVERAGE 80889 SQ. FT. (186 AC)
2	EXISTING WETLAND AREA IN SITE 74258 SQ. FT. (170 AC)
3	EXISTING WETLAND AREA IN ROW 2897 SQ. FT. (0.06 AC)
4	PROPOSED WETLAND DISTURBANCE IN ROW 2897 SQ. FT. (0.06 AC)
5	PROPOSED WETLAND DISTURBANCE IN ROW 2897 SQ. FT. (0.06 AC)
6	PROPOSED WETLAND DISTURBANCE IN ROW 2897 SQ. FT. (0.06 AC)
7	PROPOSED WETLAND DISTURBANCE IN ROW 2897 SQ. FT. (0.06 AC)
8	PROPOSED WETLAND DISTURBANCE IN ROW 2897 SQ. FT. (0.06 AC)
9	PROPOSED WETLAND DISTURBANCE IN ROW 2897 SQ. FT. (0.06 AC)

DATE: 08.23.22
 DRAWN BY: C. WHITE
 CHECKED BY: A. MANSWELL
 PROJECT NO.: 1

WETLANDS EXHIBIT

**NEW RETAIL STORE
 PELL CITY, ALABAMA
 PROPOSED WETLANDS DISTURBANCE**

Civil Engineering | Land Surveying | Landscape Architecture
 Environmental | Water Resources | Laser Scanning + Modeling

SCHOEL

1001 22nd Street South 7550 Memorial Pkwy SW, Ste 209
 Birmingham, Alabama 35226 Nashville, Alabama 35802
 205.392.6166 256.539.1221
 schoel.com

NEW RETAIL STORE PELL CITY, ALABAMA PROPOSED WETLANDS DISTURBANCE

REVISIONS:

WETLANDS EXHIBIT

DATE: 08.25.22
 DRAWN BY: C. WHITE
 CHECKED BY: A. KANGRINELLI
 PROJECT NO.:

