



REPLY TO
ATTENTION OF:

DEPARTMENT OF THE ARMY
U.S. ARMY ENGINEER DISTRICT, MOBILE
P.O. BOX 2288
MOBILE, ALABAMA 36628-0001

Regulatory Division
PUBLIC NOTICE NO. SAM-2020-00431-MBM

January 8, 2021

**JOINT PUBLIC NOTICE
U.S. ARMY CORPS OF ENGINEERS**

**MISSISSIPPI DEPARTMENT OF ENVIRONMENTAL QUALITY
OFFICE OF POLLUTION CONTROL**

MISSISSIPPI DEPARTMENT OF MARINE RESOURCES

**PROPOSED RED CREEK MITIGATION BANK, NEAR WIGGINS,
STONE COUNTY, MISSISSIPPI**

TO WHOM IT MAY CONCERN:

This District has received a complete mitigation banking prospectus for the proposed establishment of a mitigation bank referred to as the **Red Creek Mitigation Bank**. Please communicate this information to interested parties.

**BANK SPONSOR: Red Creek Land Company, L.L.C.
104 Thomas Price Cemetery Road
Wiggins, MS 39577**

The mitigation bank sponsor, Red Creek Land Company, L.L.C., is proposing to establish the 340-acre Red Creek Mitigation Bank as a commercial mitigation bank in Stone County, Mississippi, to generate wetland and stream mitigation credits for purchase by interested Department of Army (DOA) permit applicants in order to fulfill compensatory wetland and stream mitigation requirements for various project-related impacts subject to U.S. Army Corps of Engineers (Corps) regulatory authority pursuant to Section 10 of the Rivers and Harbor Act and Section 404 of the Clean Water Act. The proposed mitigation bank is located in Section 17 of Township 3 South, Range 11 West, 30.8441 North, -89.1946 West, near Wiggins in Stone County, Mississippi. The proposed service area for the mitigation bank includes Jackson, Harrison, Hancock, Pearl River, Stone and George Counties, and the 03170007 HUC watershed. Use of bank outside of designated service area would require the use of the Mobile District Proximity Factor Method.

To generate bottomland hardwood wetland mitigation credits, the sponsor proposes to enhance 87 acres of wetlands currently managed for pasture grasses, restore 183 acres of wetlands converted to ponds, berms, and roads for the commercial aquaculture production of catfish, crawfish, and alligators, and preserve 57 acres of high quality forested bottomland hardwoods. The wetland enhancement activities would include tree planting and management of bottomland hardwood wetland species to achieve the target species composition, density and diversity. The wetland restoration activities would include restoring site topography by removing the roads and berms and filling the ponds to restore wetland hydrology, and tree planting and management of bottomland hardwood wetland species to achieve the target species composition, density and diversity. The site contains high-quality unimpacted hardwood systems that will be used as reference sites for identifying regional specific wetland species. All wetland credit calculations will be determined using either the Wetland Ratio Method or Rapid Assessment Procedure (WRAP).

The site contains two perennial streams. To generate stream mitigation credits, the applicant proposes Priority I restoration on the upper 2,180 linear feet of the unnamed tributary (UT1) to Red Creek that has been rerouted and channelized to provide water to the aquaculture ponds. The stream originates onsite from a spring with an output of 1,800 gallons of water per minute. The applicant is proposing 100-foot riparian buffer preservation along 5,819 linear feet of Red Creek, and 50-foot riparian buffer preservation along the lower 870 linear-foot reach of UT1. All preservation areas will be monitored for exotic species. All stream credits will be determined using the 2012 Mobile District Compensatory Stream Mitigation Standard Operating Procedures and Guidelines. For additional information, a copy of the final prospectus is available upon request.

On 10 April 2008 the U.S. Army Corps of Engineers and the U.S. Environmental Protection Agency issued new regulations, in the Federal Register, Vol. 73, No. 70, governing compensatory mitigation for losses of aquatic resources. The new regulation, 33 CFR 332 – Compensatory Mitigation for Losses of Aquatic Resources, establishes performance standards and criteria for mitigation projects including mitigation banks. Part 33 CFR 332.8 addresses requirements for establishing, operating, and maintaining mitigation banks that provide credits to satisfy mitigation requirements of the Clean Water Act, Section 404 permit program. Recognizing the potential benefits mitigation banking offers for streamlining the permit evaluation process and providing more effective mitigation for authorized impacts to wetlands, the agencies encourage the establishment and appropriate use of mitigation banks in the Section 404 program. This guidance became effective 9 June 2008.

An interagency group of Federal and State regulatory and resource agency representatives, as appropriate given the projected use for the bank, referred to as the Mitigation Banking Interagency Review Team (IRT), is signatory to a banking instrument and oversees the establishment, use and operation of a mitigation bank. Information provided in the prospectus will serve as the basis for establishing a banking instrument which will describe in detail the physical and legal characteristics of the bank and how the bank will be established and operated. A copy of the full prospectus is available upon request.

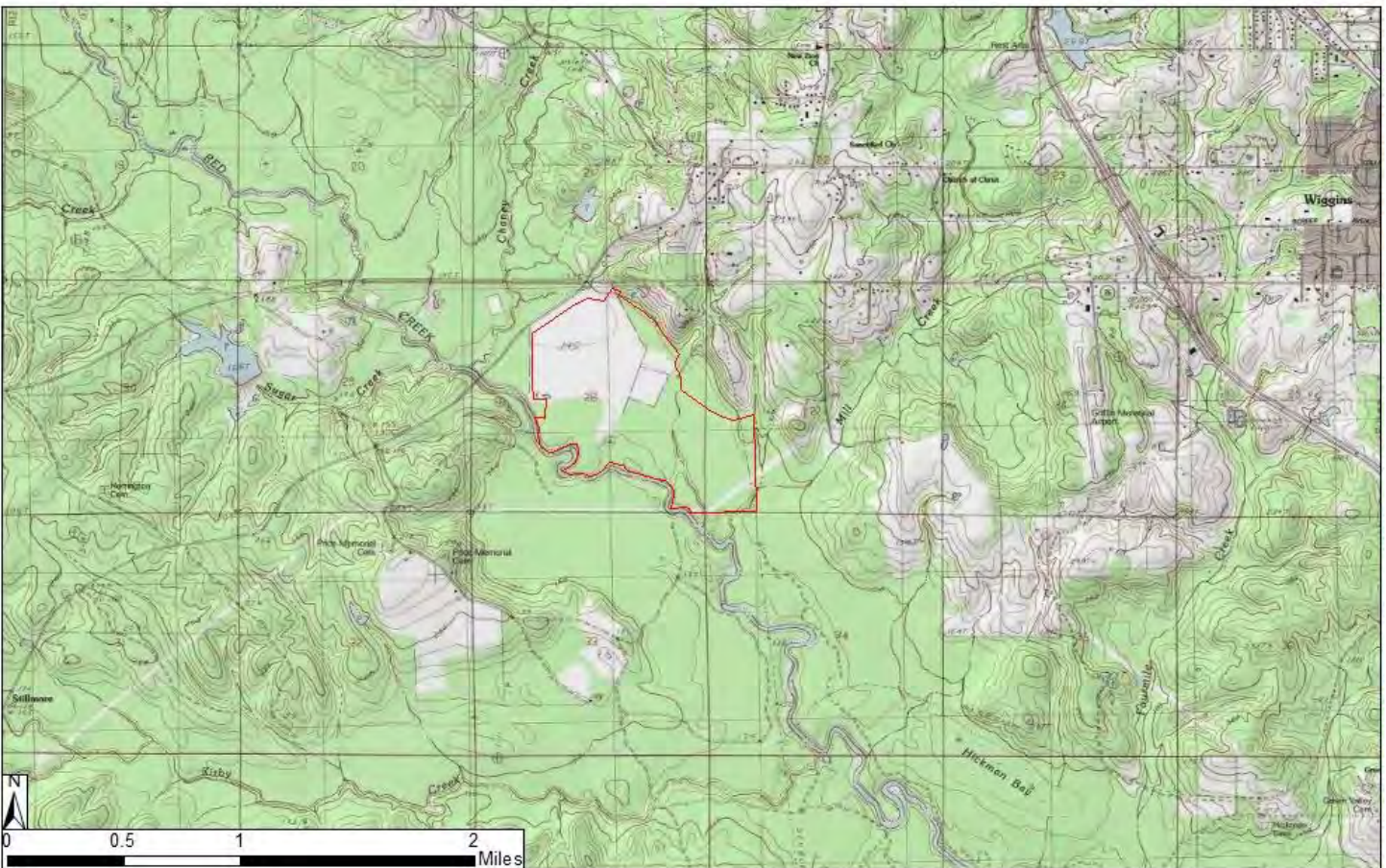
The Corps is soliciting comments from the public; Federal, State and local agencies and officials; Indian Tribes; and other interested parties for consideration while evaluating this proposed activity. Copies of all comments received will be distributed to the other members of the IRT and the bank sponsor for full consideration in the development of the mitigation bank.

Comments concerning this Public Notice should be received within 30 days of the date of this public notice and should refer to number **SAM-2020-00431-MBM** and direct your correspondence to the District Commander, U.S. Army Engineer District, Mobile, Post Office Box 2288, Mobile, Alabama 36628-0001, Attention: Regulatory Division; with a copy to the Mississippi Department of Environmental Quality, Office of Pollution Control, Post Office Box 2261, Jackson, Mississippi 39225-2261, and the Mississippi Department of Marine Resources, 1141 Bayview Avenue, Suite 101, Biloxi, Mississippi 39530. If you have any questions concerning this publication, please contact Mr. Michael Moxey, IRT Chair, at michael.b.moxey@usace.army.mil or telephone number (251) 690-2658.


MOBILE DISTRICT
U.S. Army Corps of Engineers

Enclosures

4C: Vicinity Map Topographical



Legend

 Bank Boundary 340-acres

Red Creek Mitigation Bank - 340 acres
Stone County, Mississippi
Approximate Center:
Lat: 30.8441 Long: -89.1946 (WGS84)
HUC: 03170007 BLACK AND RED CREEKS
Topo Quad: Wiggins

Wetland Consulting Services, Inc
21 Autumn Run
Hattiesburg, MS 39402
801-550-2346
wetlandcs@comcast.net
wetlandconsultingservice.com

4D : Aerial Map Showing Area included with Bank



Legend

Bank Boundary 340-acres

0 1,000 2,000 4,000 Feet



Red Creek Mitigation Bank - 340 acres
Stone County, Mississippi
Approximate Center:
Lat: 30.8441 Long: -89.1946 (WGS84)
HUC: 03170007 BLACK AND RED CREEKS
Topo Quad: Wiggins

Wetland Consulting Services,
Inc
21 Autumn Run
Hattiesburg, MS 39402
601-550-2346
wetlandcs@comcast.net
wetlandconsultingservice.com

4E: Conceptual Site Plan:

