



REPLY TO
ATTENTION OF:

DEPARTMENT OF THE ARMY
U.S. ARMY ENGINEER DISTRICT, MOBILE
P.O. BOX 2288
MOBILE, ALABAMA 36628-0001

Regulatory Division
PUBLIC NOTICE NO. SAM-2019-00618-MBM

July 9, 2019

JOINT PUBLIC NOTICE
U.S. ARMY CORPS OF ENGINEERS

MISSISSIPPI DEPARTMENT OF ENVIRONMENTAL QUALITY
OFFICE OF POLLUTION CONTROL

MISSISSIPPI DEPARTMENT OF MARINE RESOURCES

**PROPOSED BOGUE HOMO MITIGATION BANK, PHASE II, JONES COUNTY,
MISSISSIPPI**

TO WHOM IT MAY CONCERN:

This District has received a complete mitigation banking prospectus for the proposed establishment of a mitigation bank referred to as the **Bogue Homo Mitigation Bank, Phase II**. Please communicate this information to interested parties.

**BANK SPONSOR: Bogue Homo Mitigation Bank, LLC
C/o Pittman Environmental Services. L.L.C.
Attention: Mr. Bart Pittman
P.O. Box 1926
Purvis, Mississippi 39441**

The mitigation bank sponsor, Bogue Homo Mitigation Bank, L.L.C., is proposing to establish the 140-acre Bogue Homo Mitigation Bank, Phase II, commercial mitigation bank in Jones County, Mississippi, to generate wetland and stream mitigation credits for purchase by interested Department of Army (DOA) permit applicants in order to fulfill compensatory wetland and stream mitigation requirements for various project-related impacts subject to U.S. Army Corps of Engineers (Corps) regulatory authority pursuant to Section 10 of the Rivers and Harbor Act and Section 404 of the Clean Water Act. The proposed mitigation bank site is adjacent and contiguous with the existing approved 482.87-acre Bogue Homo Mitigation Bank, Phase I. The proposed service area for the mitigation bank includes all portions of Jasper, Jones, Wayne, Forrest, Perry, Green, and George Counties inside the 03170005 HUC watershed. Use of bank outside of designated service would require the use of the Mobile District Proximity Factor Method. The proposed Bogue Homo Mitigation Bank, Phase II, is located in Sections 29 and 30 of Township 8 North, Range 10 West, 31.632932 North, -89.034061 West, east of Antioch, Jones County, Mississippi.

To generate bottomland hardwood wetland mitigation credits, the sponsor proposes to enhance 56.92 acres of wetlands currently managed for pine silviculture, 18.33 acres currently impacted by high densities of fully mature exotic invasive species, and preserve 13.66 acres of high quality forested wetlands. The wetland enhancement activities would include pine tree removal, exotic species removal, and tree planting of bottomland hardwood wetland species to restore the composition, density and diversity of the native bottomland hardwood wetland system. The site is adjacent to high-quality unimpacted hardwood systems that will be used as reference sites for determining appropriate wetland species. All wetland credit calculations will be determined using the Wetland Rapid Assessment Procedure (WRAP). The proposed mitigation bank contains 5.55 acres of uplands that will be planted with the native endemic species to achieve a forested upland system.

To generate stream mitigation credits within the Bogue Homo Mitigation Bank, Phase II, the applicant proposes to enhance 41.29 acres of bottomland hardwood wetlands within the riparian zones along 1,659 linear feet of Bogue Homo, 1,740 linear feet of Mill Creek, and 3,340 linear feet of Double Branch. The sponsor proposes to enhance 21.46 acres currently being managed for pine silviculture and 19.83 acres that are impacted by high densities of mature exotic invasive species. All streams are perennial streams. No instream mitigation is proposed. All stream credits will be determined using the 2012 Mobile District Compensatory Stream Mitigation Standard Operating Procedures and Guidelines.

On 10 April 2008 the U.S. Army Corps of Engineers and the U.S. Environmental Protection Agency issued new regulations, in the Federal Register, Vol. 73, No. 70, governing compensatory mitigation for losses of aquatic resources. The new regulation, 33 CFR 332 – Compensatory Mitigation for Losses of Aquatic Resources, establishes performance standards and criteria for mitigation projects including mitigation banks. Part 33 CFR 332.8 addresses requirements for establishing, operating, and maintaining mitigation banks that provide credits to satisfy mitigation requirements of the Clean Water Act, Section 404 permit program. Recognizing the potential benefits mitigation banking offers for streamlining the permit evaluation process and providing more effective mitigation for authorized impacts to wetlands, the agencies encourage the establishment and appropriate use of mitigation banks in the Section 404 program. This guidance became effective 9 June 2008.

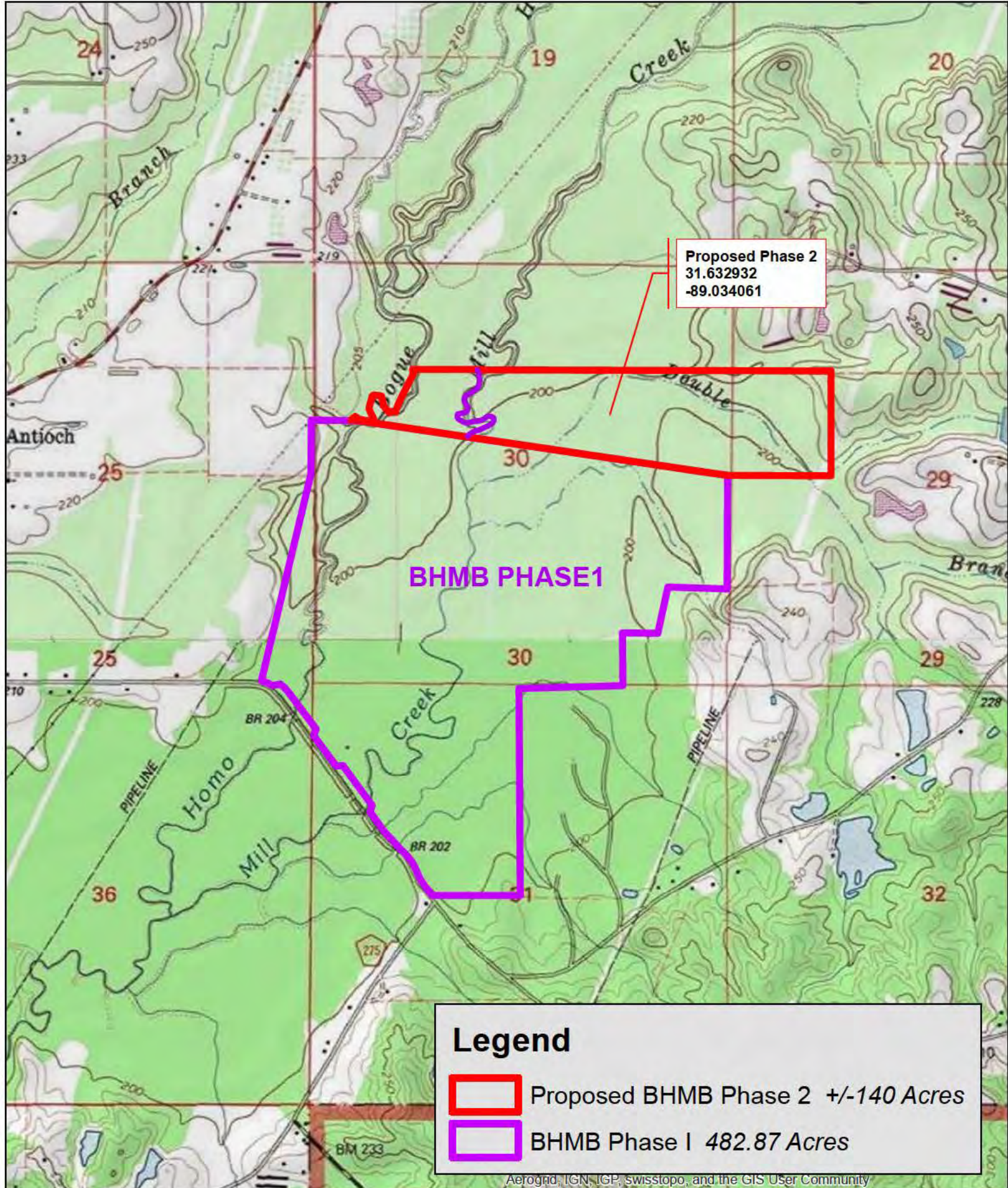
An interagency group of Federal and State regulatory and resource agency representatives, as appropriate given the projected use for the bank, referred to as the Mitigation Banking Interagency Review Team (IRT), is signatory to a banking instrument and oversees the establishment, use and operation of a mitigation bank. Information provided in the prospectus will serve as the basis for establishing a banking instrument which will describe in detail the physical and legal characteristics of the bank and how the bank will be established and operated. A copy of the full prospectus is available upon request.

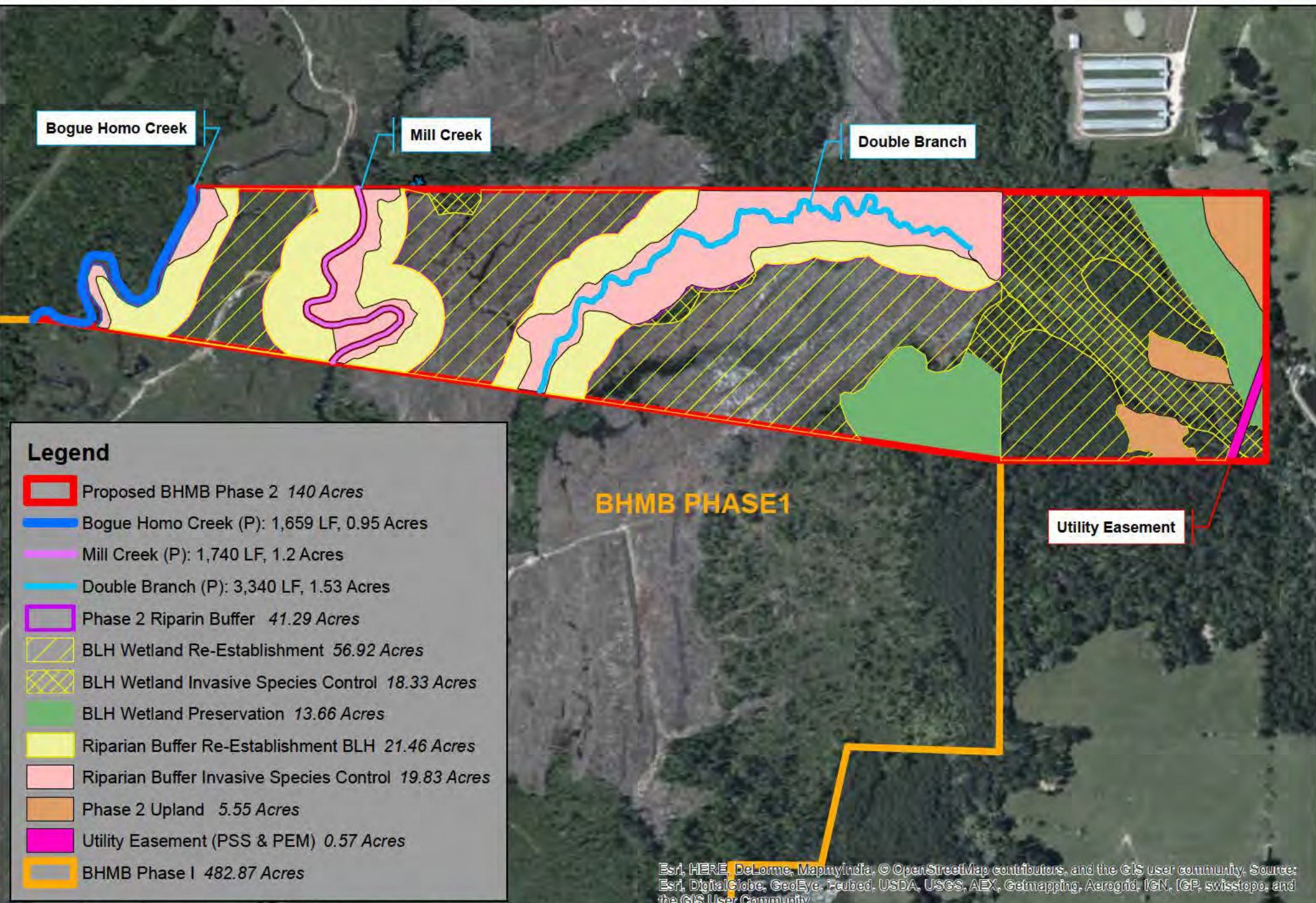
The Corps is soliciting comments from the public; Federal, State and local agencies and officials; Indian Tribes; and other interested parties for consideration while evaluating this proposed activity. Copies of all comments received will be distributed to the other members of the IRT and the bank sponsor for full consideration in the development of the mitigation bank.

Comments concerning this Public Notice should be received within 30 days of the date of this public notice and should refer to number **SAM-2019-00618-MBM** and direct your correspondence to the District Commander, U.S. Army Engineer District, Mobile, Post Office Box 2288, Mobile, Alabama 36628-0001, Attention: Regulatory Division; with a copy to the Mississippi Department of Environmental Quality, Office of Pollution Control, Post Office Box 2261, Jackson, Mississippi 39225-2261, and the Mississippi Department of Marine Resources, 1141 Bayview Avenue, Suite 101, Biloxi, Mississippi 39530. If you have any questions concerning this publication, please contact Mr. Michael Moxey, IRT Chair, at michael.b.moxey@usace.army.mil or telephone number (251) 690-2658.

MOBILE DISTRICT
U.S. Army Corps of Engineers

Enclosures



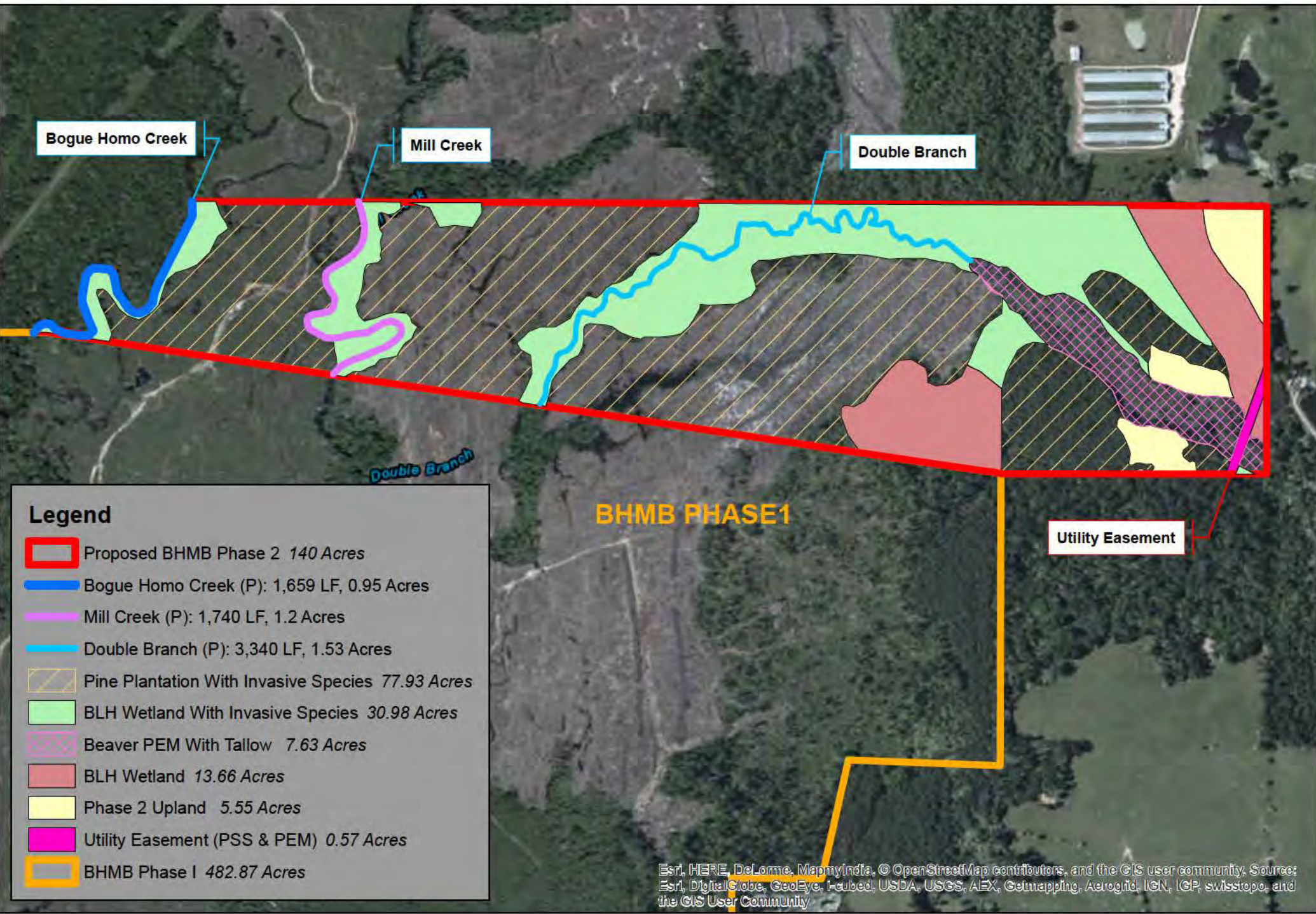


Legend

- Proposed BHMB Phase 2 140 Acres
- Bogue Homo Creek (P): 1,659 LF, 0.95 Acres
- Mill Creek (P): 1,740 LF, 1.2 Acres
- Double Branch (P): 3,340 LF, 1.53 Acres
- Phase 2 Riparin Buffer 41.29 Acres
- BLH Wetland Re-Establishment 56.92 Acres
- BLH Wetland Invasive Species Control 18.33 Acres
- BLH Wetland Preservation 13.66 Acres
- Riparian Buffer Re-Establishment BLH 21.46 Acres
- Riparian Buffer Invasive Species Control 19.83 Acres
- Phase 2 Upland 5.55 Acres
- Utility Easement (PSS & PEM) 0.57 Acres
- BHMB Phase I 482.87 Acres

BHMB PHASE 1

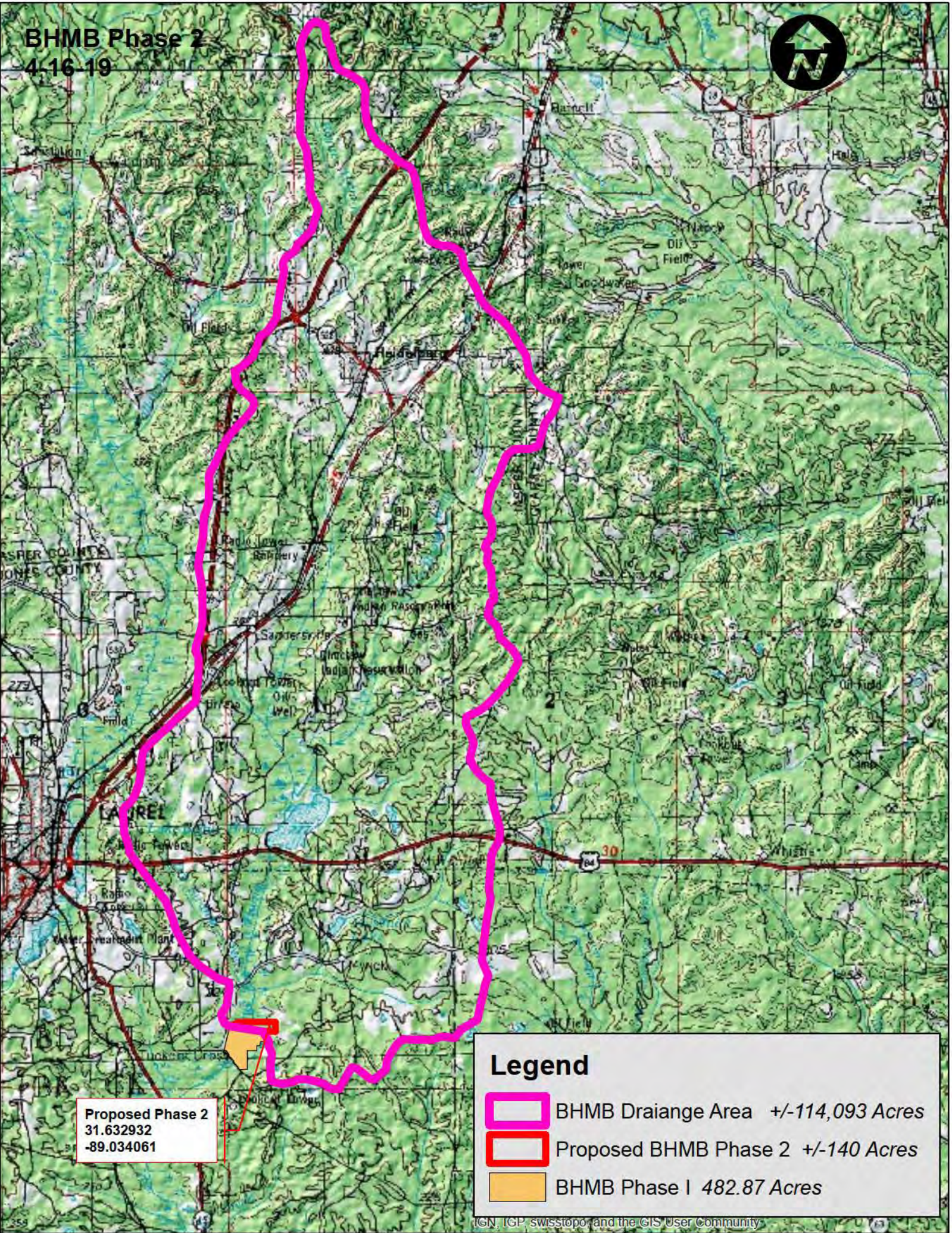
Utility Easement



Legend

-  Proposed BHMB Phase 2 140 Acres
-  Bogue Homo Creek (P): 1,659 LF, 0.95 Acres
-  Mill Creek (P): 1,740 LF, 1.2 Acres
-  Double Branch (P): 3,340 LF, 1.53 Acres
-  Pine Plantation With Invasive Species 77.93 Acres
-  BLH Wetland With Invasive Species 30.98 Acres
-  Beaver PEM With Tallow 7.63 Acres
-  BLH Wetland 13.66 Acres
-  Phase 2 Upland 5.55 Acres
-  Utility Easement (PSS & PEM) 0.57 Acres
-  BHMB Phase I 482.87 Acres

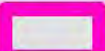


BHMB Phase 2
4-16-19



ASPER COUNTY
JONES COUNTY

LAUREL

Legend

-  BHMB Drainage Area +/-114,093 Acres
-  Proposed BHMB Phase 2 +/-140 Acres
-  BHMB Phase I 482.87 Acres

Proposed Phase 2
31.632932
-89.034061