



REPLY TO
ATTENTION OF:

DEPARTMENT OF THE ARMY
U.S. ARMY CORPS OF ENGINEERS, MOBILE DISTRICT
P.O. BOX 2288
MOBILE, AL 36628-0001

CESAM-RD
PUBLIC NOTICE NO. SAM-2019-00319-MBM

December 20, 2022

JOINT PUBLIC NOTICE
U.S. ARMY CORPS OF ENGINEERS AND
STATE OF ALABAMA
DEPARTMENT OF ENVIRONMENTAL
MANAGEMENT

PROPOSED WETLAND AND STREAM RESTORATION, ENHANCEMENT AND
PRESERVATION FOR THE PROPOSED CENTRAL ALABAMA MITIGATION BANK,
PERRY COUNTY, ALABAMA

TO WHOM IT MAY CONCERN:

The District has received a complete mitigation banking prospectus for the establishment of a commercial mitigation bank referred to as the Central Alabama Mitigation Bank. Please communicate this information to interested parties.

BANK SPONSOR: Central Alabama Mitigation Services, L.L.C.
Attention: Mr. Mark Corr
101 Church Street, #B
Selma, Alabama 36701

Central Alabama Mitigation Services, L.L.C. proposing to establish a 392-acre commercial wetland and stream mitigation bank in Perry County, Alabama. The mitigation bank would generate wetland and stream compensatory mitigation credits for purchase by interested Department of Army (DOA) permit applicants in order to fulfill compensatory mitigation requirements for various project-related wetland and stream impacts subject to U.S. Army Corps of Engineers (USACE) regulatory authority pursuant to Section 404 of the Clean Water Act. Approval for DOA permittees to use bank mitigation credits would be determined on a case-by-case basis at the time of permit evaluation.

The proposed 392-acre mitigation bank project is located northwest of Selma, Alabama, on property abutting Oakmulgee Creek in the Cahaba River Watershed (HUC 03150202). The property abuts the Talladega National Forest. The Bank is located at latitude 32.625°N and longitude 87.082°W in Sections 9, 10, 15, 16, 20, and 21, Township 19 North, Range 10 East. This watershed is the primary service area, and use of the Mobile District Proximity Factor Method would be required for projects outside this watershed. Use of bank outside of designated service area may be authorized on a case-by-case basis by the USACE.

The proposed 392-acre Central Alabama Mitigation Bank contains 43,362 linear feet of perennial and intermittent stream channels. Oakmulgee Creek represents 10,715 linear feet of stream channel, and the nine tributaries represent 32,642 linear feet of stream channel. Within the tributaries, 10,128 linear feet of stream channel is stable with only riparian buffer enhancement being proposed, and the remaining 22,514 LF will receive stream channel restoration and riparian buffer enhancement actions. The project is proposing 200-foot riparian buffers on all perennial streams and 100-foot riparian buffers on all intermittent streams. The wetlands within the project site are comprised of 78 acres of bottomland hardwood wetlands and 2.21 acres of headwater slope wetlands. The wetlands and uplands within the site have been impacted by commercial forestry management practices including conversion to pine silviculture. The project proposes to enhance and preserve all wetlands and the uplands located within the stream riparian buffers. Priority 1 (creating new stream channel) and Priority 2 (fixing existing stream channel) instream channel restoration is proposed for the incised and entrenched stream channel reaches. Land management within the wetland and riparian buffer enhancement areas includes cessation of silviculture operations, cutting pine trees off at ground level to avoid ground disturbance, hand-planting target bottomland hardwood tree species, and control of exotic invasive species. All pine trees would be removed and the impacted habitats would be restored to bottomland hardwood forested wetlands, forested headwater slope wetlands, and upland forested hardwood systems. The entire mitigation bank would be protected with a conservation easement. Stream channel restoration and riparian buffer enhancement and preservation credit calculations would be accomplished in accordance with the 2012 USACE Mobile District Compensatory Stream Mitigation Standard Operating Procedures and Guidelines. Wetland mitigation credits would be determined using the Wetland Rapid Assessment Procedure (WRAP). A copy of the full Prospectus is available upon request.

On 10 April 2008 the U.S. Army Corps of Engineers and the U.S. Environmental Protection Agency issued new regulations, in the Federal Register, Vol. 73, No. 70, for governing compensatory mitigation for losses of aquatic resources. The new regulation, 33 CFR 332 – Compensatory Mitigation for Losses of Aquatic Resources, establishes performance standards and criteria for mitigation projects including mitigation banks. Part 33 CFR 332.8 addresses requirements for establishing, operating, and maintaining mitigation banks that provide credits to satisfy mitigation requirements of the Clean Water Act, Section 404 permit program. Recognizing the potential benefits mitigation banking offers for streamlining the permit evaluation process and providing more effective mitigation for authorized impacts to wetlands, the agencies encourage the establishment and appropriate use of mitigation banks in the Section 404 program. This guidance became effective 9 June 2008. An interagency group of Federal and State regulatory and resource agency representatives, as appropriate given the projected use for the bank, referred to as the Interagency Review Team (IRT), is signatory to a banking instrument and oversees the establishment, use and operation of a

mitigation bank. Information provided in the prospectus will serve as the basis for establishing a banking instrument which will describe in detail the physical and legal characteristics of the bank and how the bank will be established and operated.

HISTORIC PROPERTIES: In accordance with Section 106 of the National Historic Preservation Act and Appendix C of 33 CFR 325, the undertaking defined in this notice is being considered for the potential to affect cultural and historic properties within the permit area. The USACE has not made a determination of effects to historic properties at this time. Copies of this public notice are being distributed to the State Historic Preservation Officer, interested federally recognized American Indian tribes, and the National Park Service, Division of Archaeological Services for review and comment.

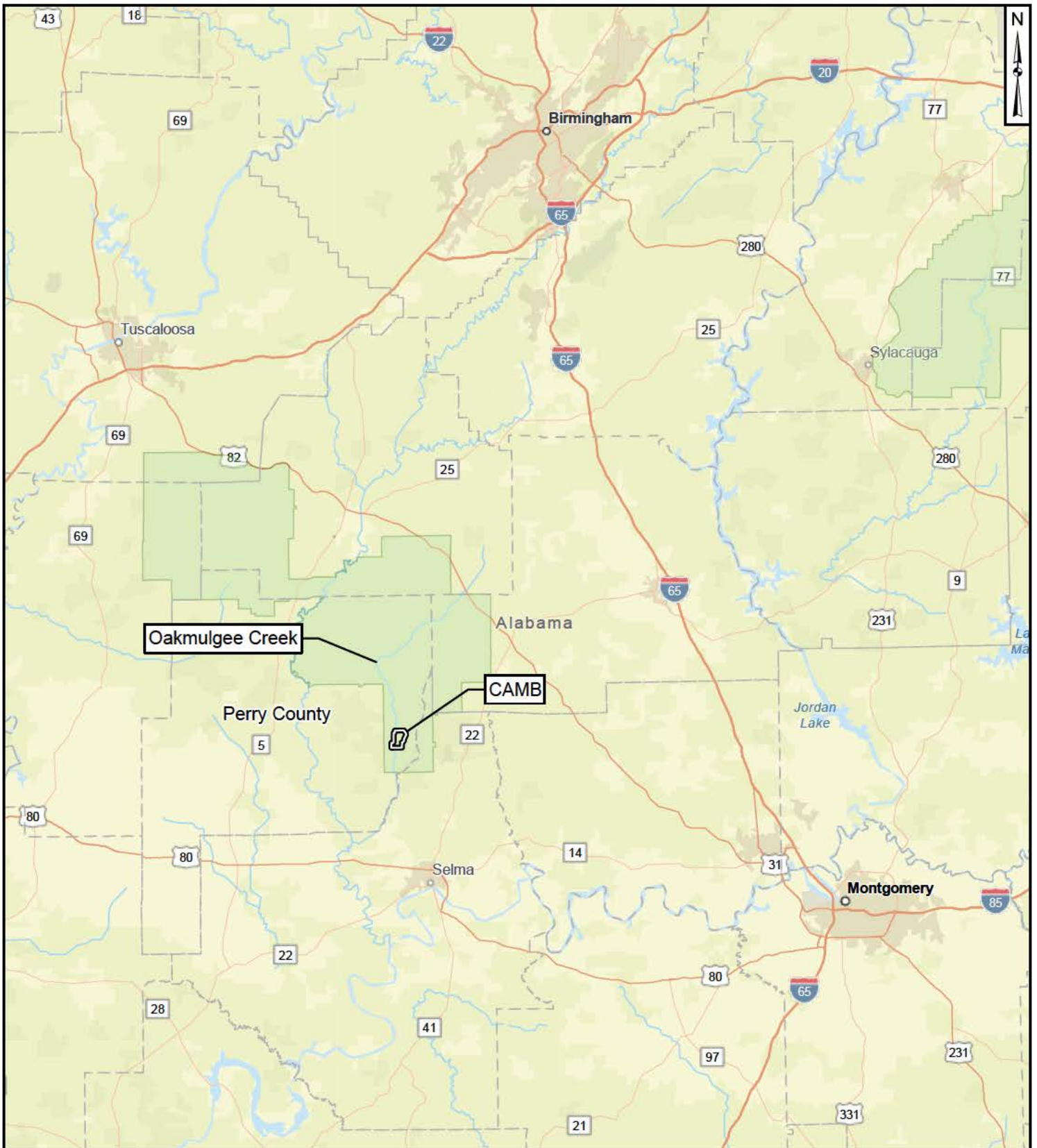
ENDANGERED/THREATENED SPECIES: Preliminary review of this application and the U.S. Department of the Interior List of Endangered and Threatened Species indicates the following species have the potential to occur in the project watershed: wood stork, Red-cockaded woodpecker, ovate clubshell, southern clubshell, Alabama sturgeon, and Georgia rockcress. An aquatic species survey has been conducted, and the Corps will be initiating consultation with the United States Fish and Wildlife Service (USFWS) under separate cover. Copies of this public notice are being sent to the USFWS for review and comment.

The USACE is soliciting comments from the public; Federal, State, and local agencies and officials; Indian Tribes; and other interested parties for consideration while evaluating this proposed activity. Copies of all comments received will be distributed to the other members of the IRT and the bank sponsor for full consideration in the development of the mitigation bank.

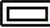
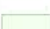

All Comments should be received no later than 30 days from the date of this Public Notice. If you have any questions concerning this publication, you may contact the project manager at (251) 694-3771 or by email at michael.b.moxey@usace.army.mil. Please refer to the above Public Notice number **SAM-2019-00319-MBM**. For additional information about our Regulatory Program, please visit our website at www.sam.usace.army.mil/Missions/Regulatory.asp

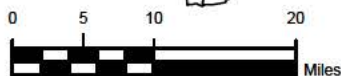
For additional information about our Regulatory Program, please visit our website at www.sam.usace.army.mil/Missions/Regulatory.aspx.

MOBILE DISTRICT
U.S. Army Corps of Engineers



Legend

-  CAMB Property Boundary
-  Talladega National Forest Administrative Boundary
-  County Boundary



Source: Esri, HERE, Garmin, SafeGraph, FAO, METI/NASA, USGS, EPA, NPS

Vicinity Map

Central Alabama Mitigation Bank
Perry County, Alabama

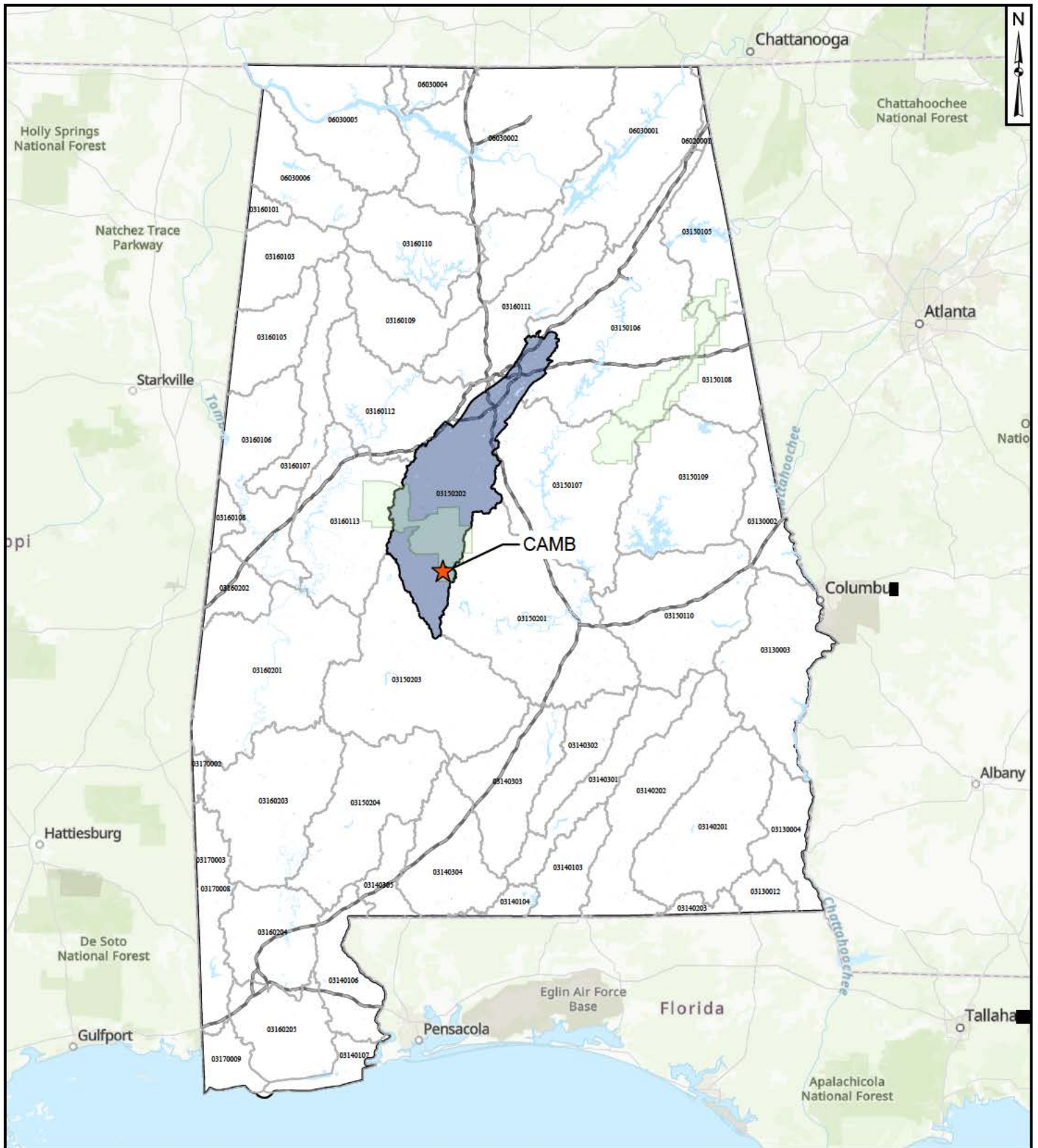
Geosyntec
consultants

Figure

1

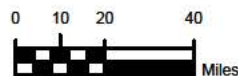
GK8345

November 2022



Legend

- CAMB
- Cahaba River Watershed (HUC 03150202)
- HUC8 Watershed Boundary
- Talladega National Forest Administrative Boundary



Source: Esri, HERE, Garmin, FAO, NOAA, USGS, EPA, NPS, Esri, USGS

HUC8 Watershed

Central Alabama Mitigation Bank
Pery County, Alabama

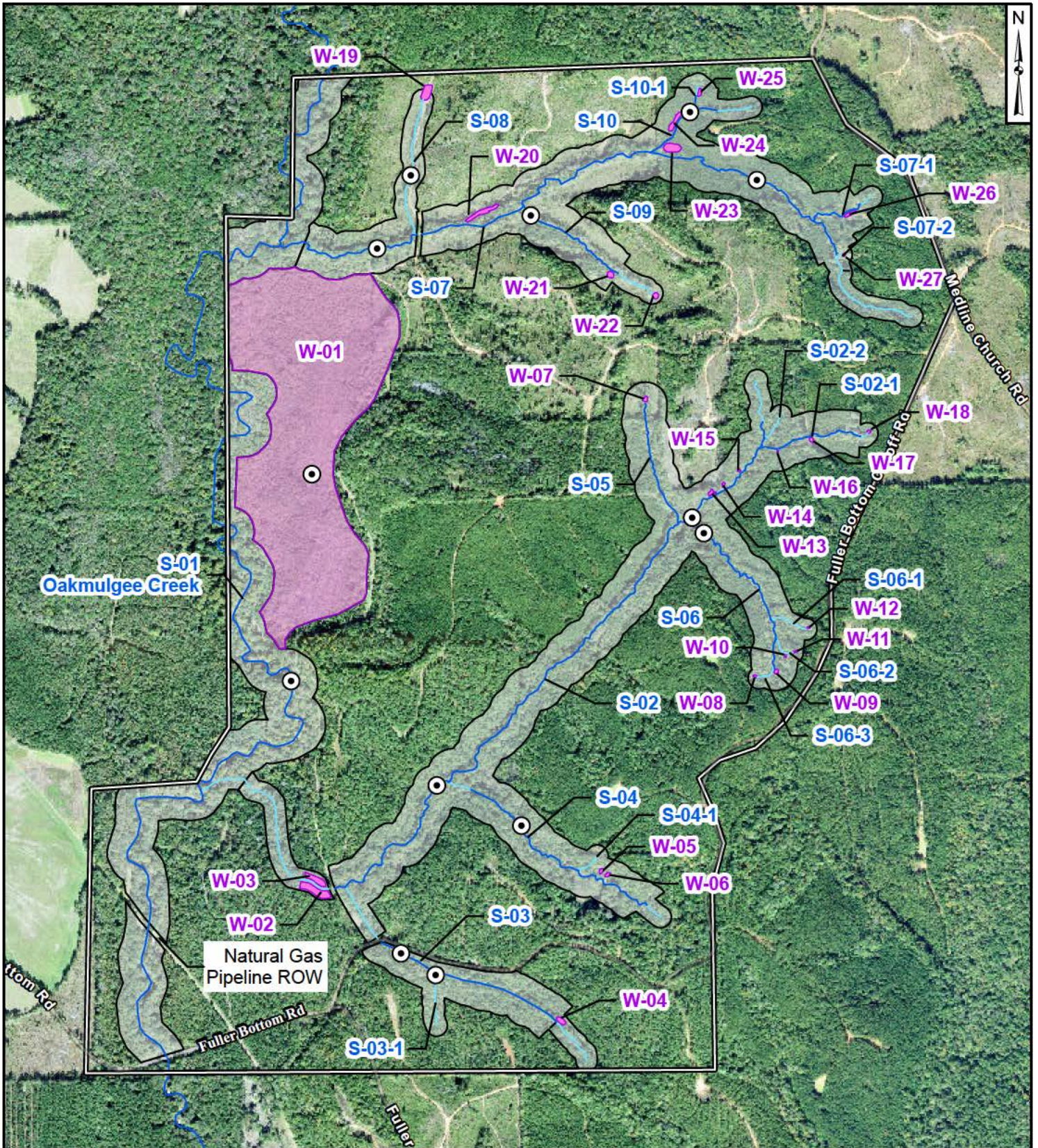
Geosyntec
consultants

Figure

2

GK8345

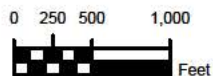
November 2022



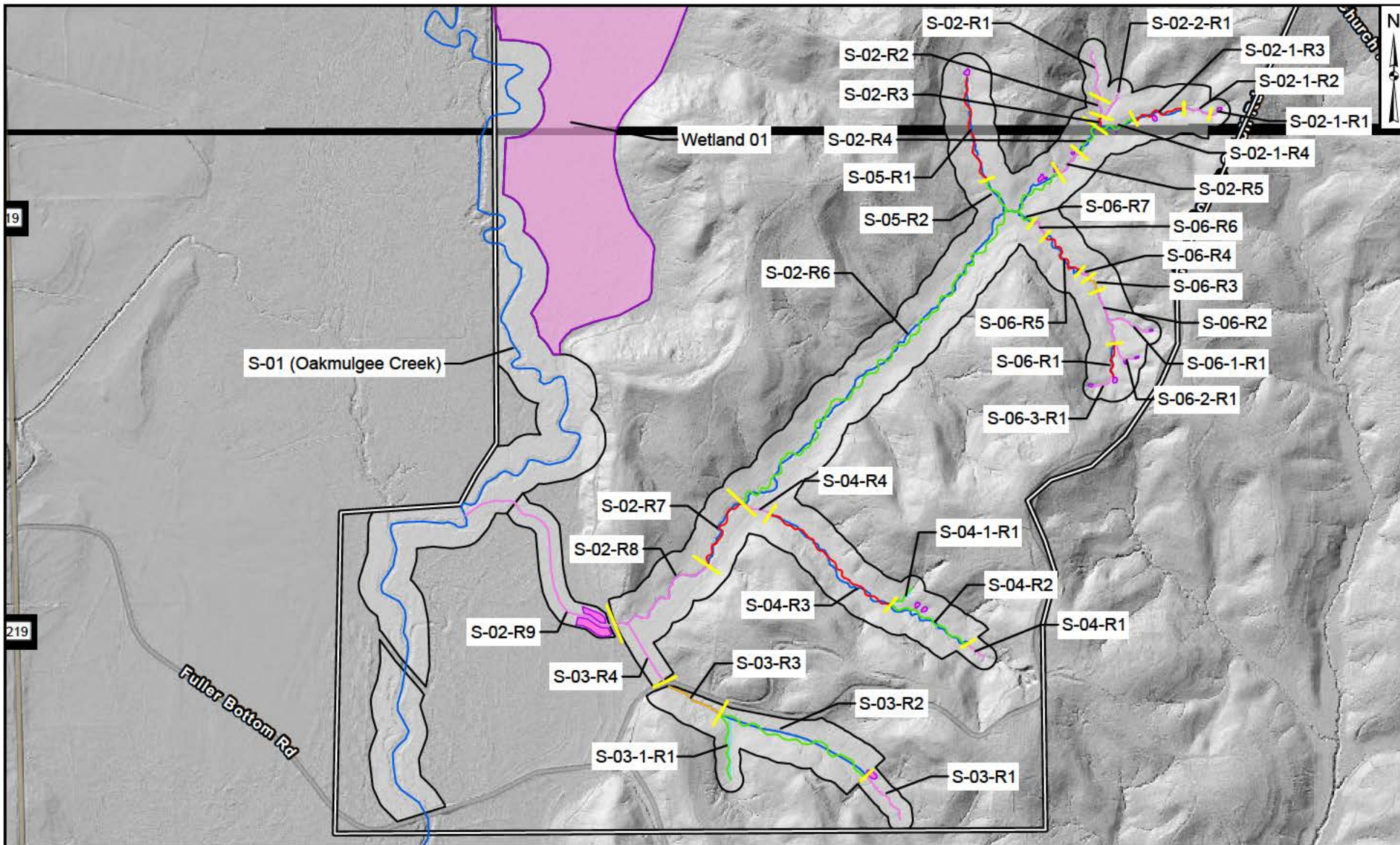
- Legend**
- Property Boundary
 - Estimated Bank Boundary
 - Perennial Stream
 - Intermittent Stream
 - Approximate Wetland Boundary
 - Approximate Pressure Gauge Location

Existing Conditions
 Central Alabama Mitigation Bank
 Pery County, Alabama

	Figure
GK8345	November 2022
4	



Source: USDA National Agriculture Imagery Program (NAIP), 2019



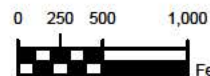
Legend

- Property Boundary
- Estimated Bank Boundary
- Approximate Wetland Boundary
- Existing Perennial Stream
- Existing Intermittent Stream
- Stream Reach Breaks

Conceptual Stream Alignment

- Priority 1 Restoration
- Priority 2 Restoration
- Priority 3 Restoration
- Stream Preservation

Note: Priority 3 restoration occurs within existing channel alignment and therefore Priority 3 is illustrated atop existing stream alignment.



**Conceptual Stream Alignment
(Stream 02 and Oakmulgee Creek Watersheds)**

Central Alabama Mitigation Bank
Perry County, Alabama

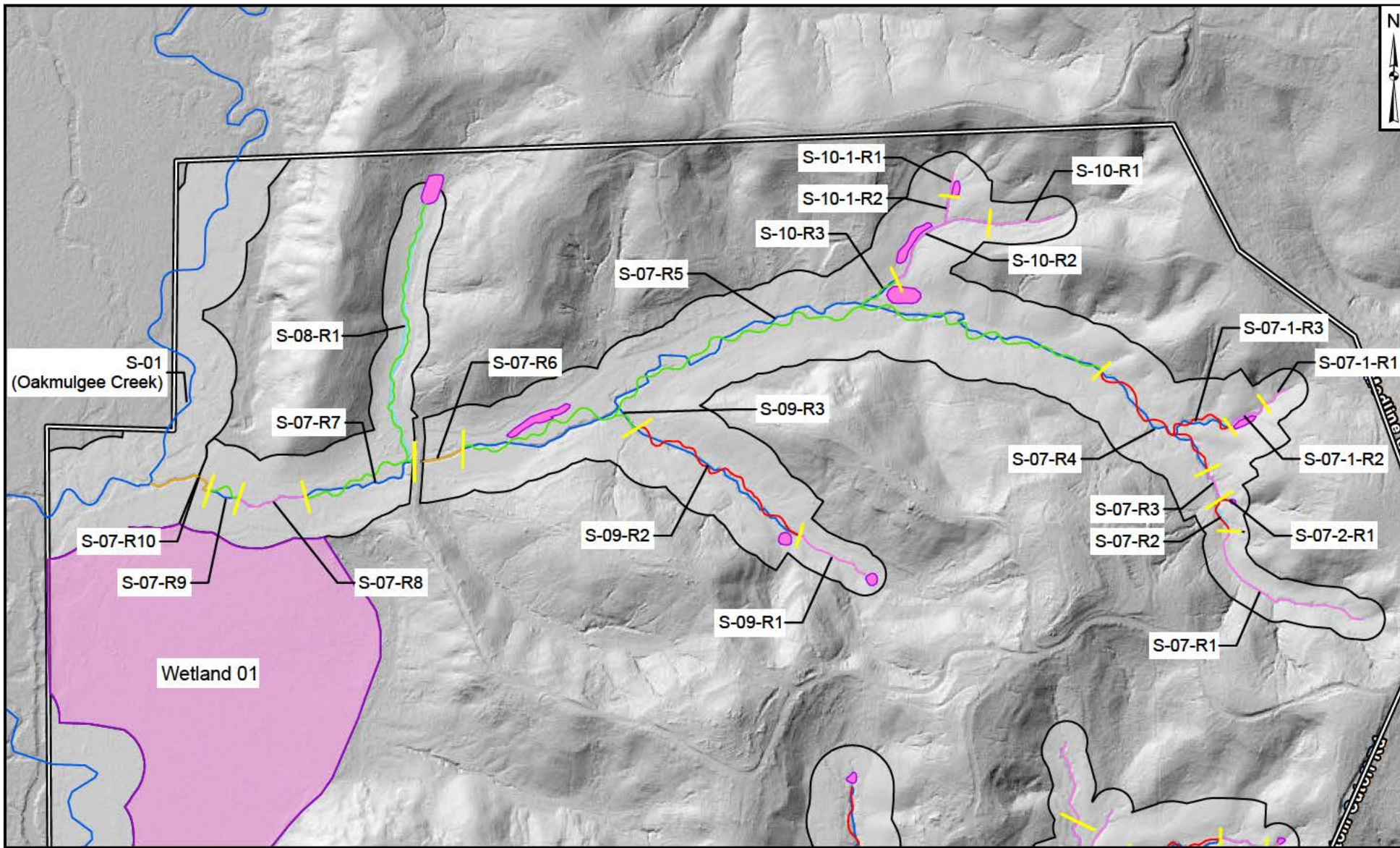
Geosyntec
consultants

Figure

12a

GK8345

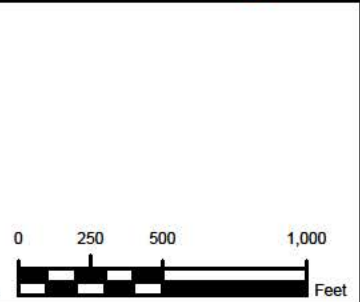
November 2022



Legend

Property Boundary	Conceptual Stream Alignment
Estimated Bank Boundary	Priority 1 Restoration
Approximate Wetland Boundary	Priority 2 Restoration
Existing Perennial Stream	Priority 3 Restoration
Existing Intermittent Stream	Stream Preservation
Stream Reach Breaks	

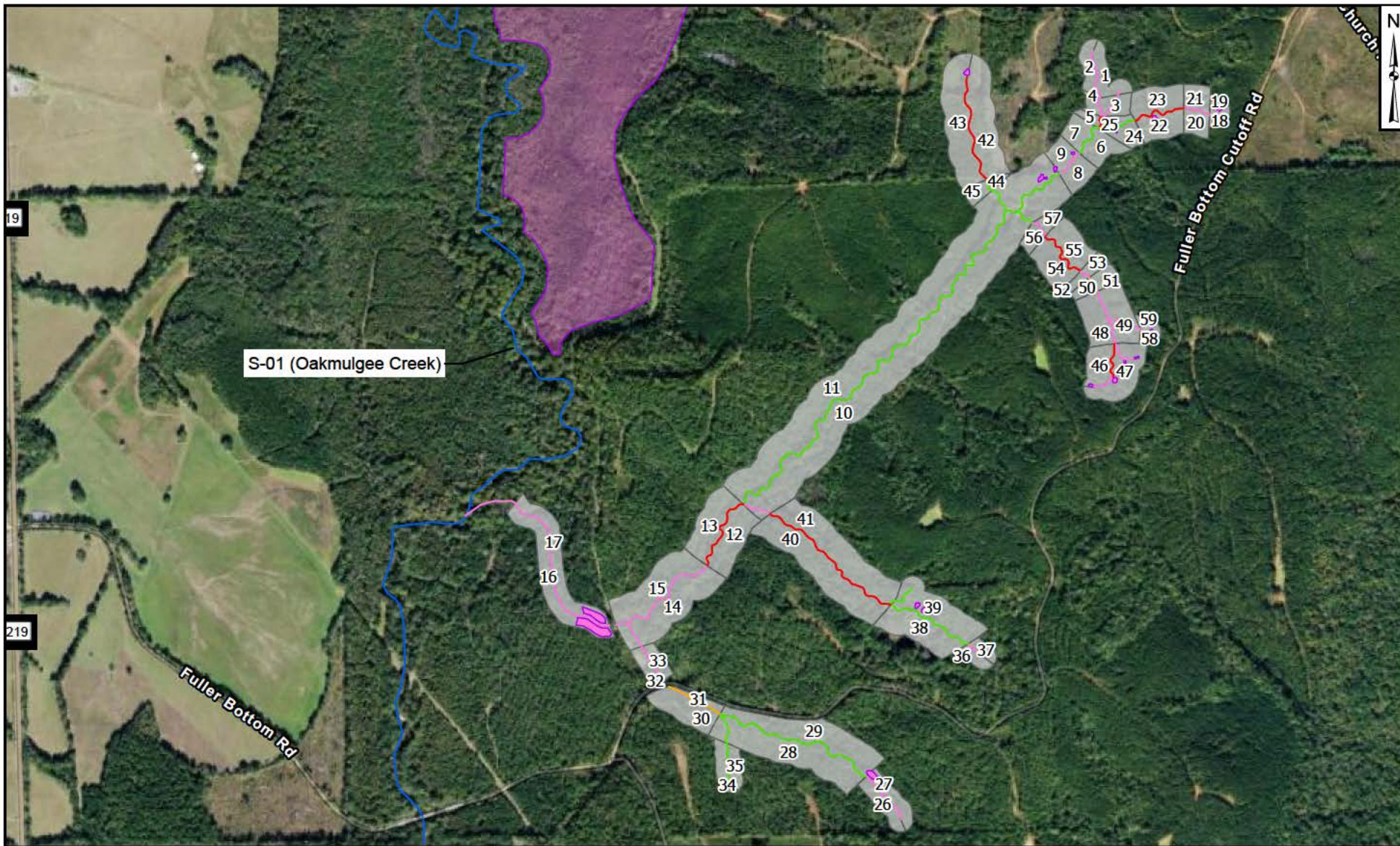
Note: Priority 3 restoration occurs within existing channel alignment and therefore Priority 3 is illustrated atop existing stream alignment.



**Conceptual Stream Alignment
(Stream 07 and Oakmulgee Creek Watersheds)**
Central Alabama Mitigation Bank
Perry County, Alabama

GK8345 November 2022

**Figure
12b**

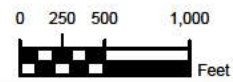


- Legend**
- Conceptual Stream Alignment**
- Priority 1 Restoration
 - Priority 2 Restoration
 - Priority 3 Restoration
 - Stream Preservation
 - Riparian Buffer Management Polygon
 - Approximate Wetland Boundary

**Riparian Buffer Management Areas
(Stream 02 and Oakmulgee Creek Watersheds)**
Central Alabama Mitigation Bank
Perry County, Alabama



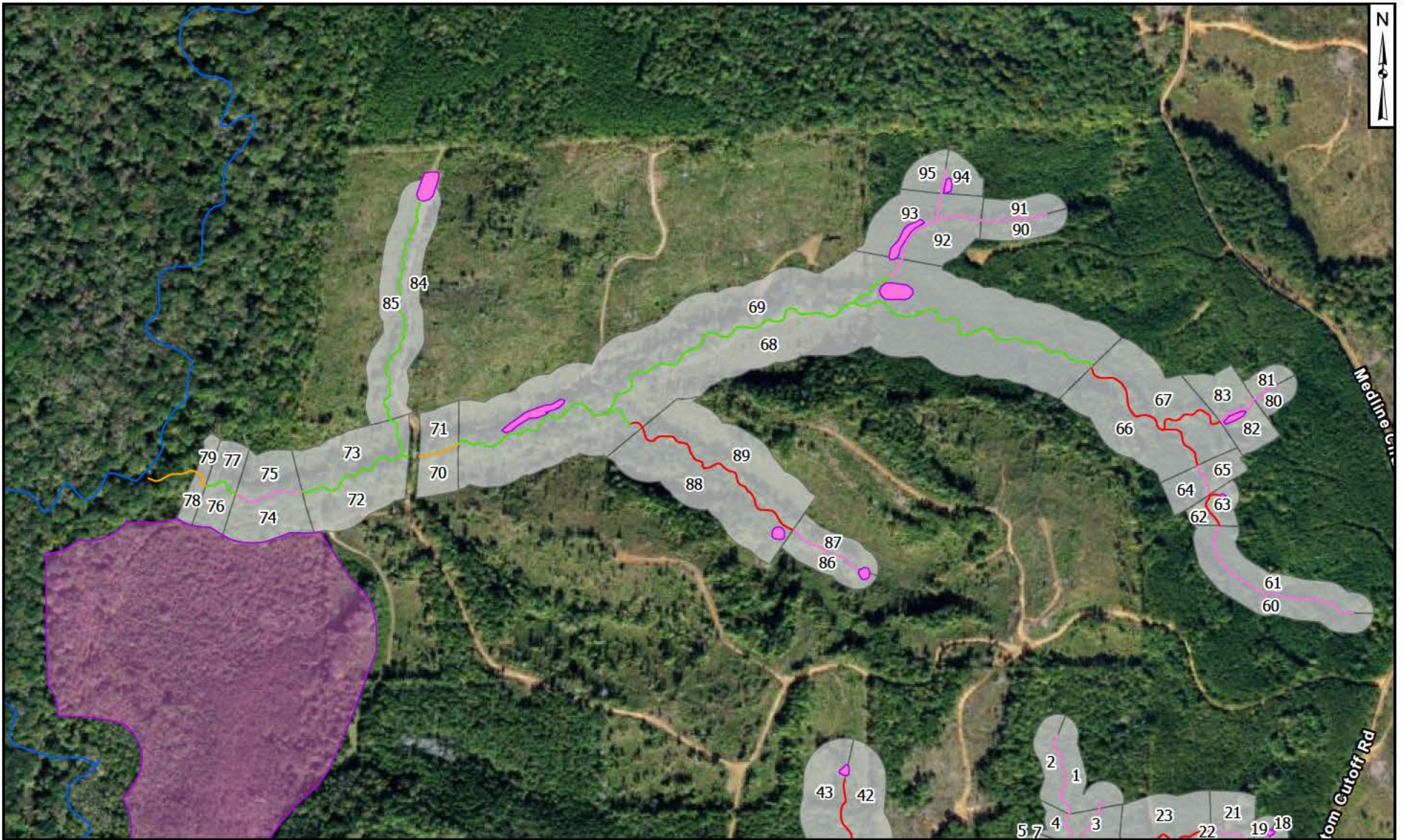
**Figure
14a**



Note, refer to Appendix A for detailed breakdown of riparian buffer management polygons.

GK8345

November 2022



Legend

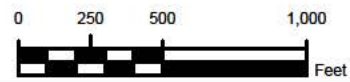
Conceptual Stream Alignment

- Priority 1 Restoration
- Priority 2 Restoration
- Priority 3 Restoration
- Stream Preservation
- Riparian Buffer Management Polygon
- Approximate Wetland Boundary

**Riparian Buffer Management Areas
(Stream 07 and Oakmulgee Creek Watersheds)**
Central Alabama Mitigation Bank
Perry County, Alabama



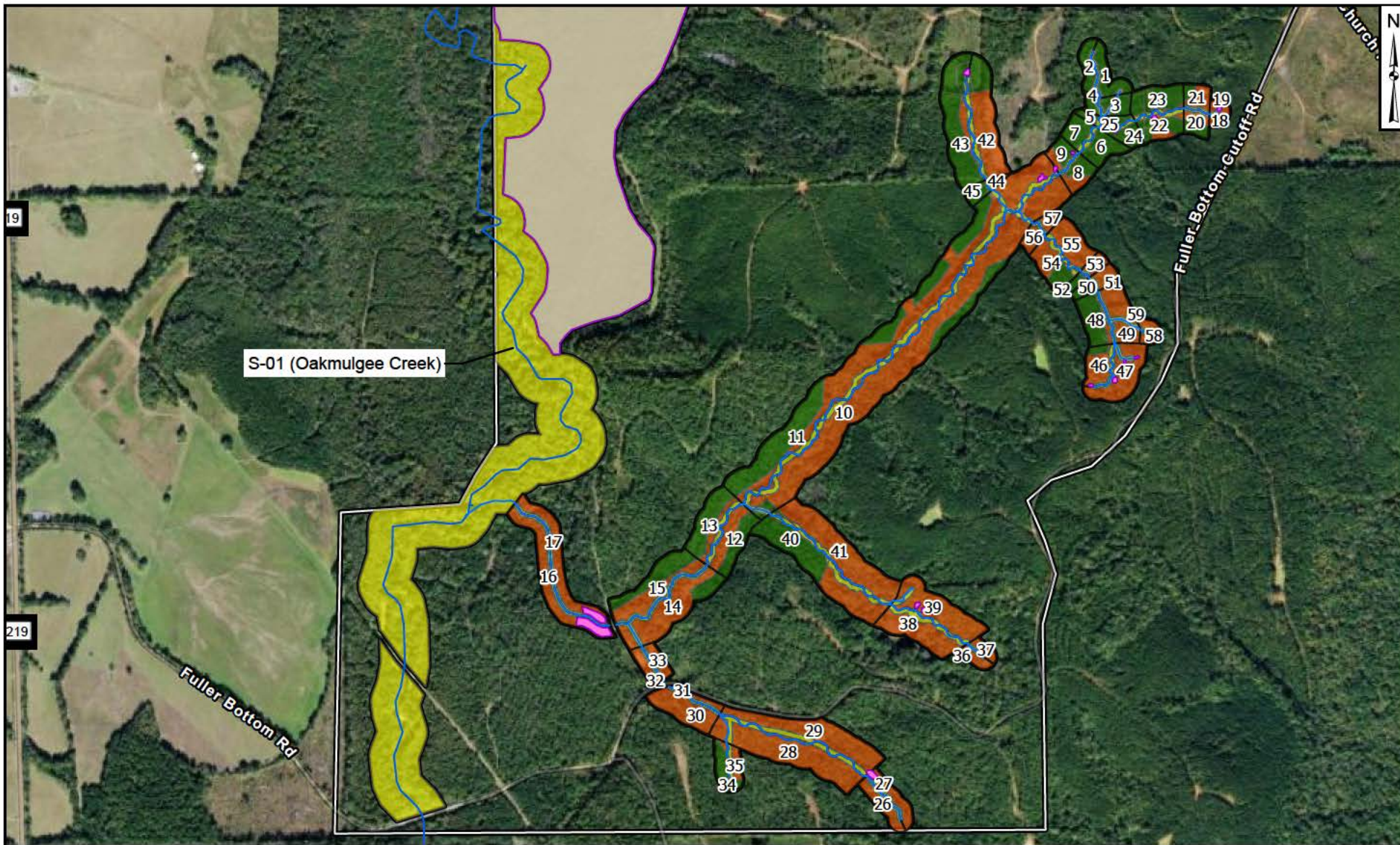
**Figure
14b**



Note, refer to Appendix A for detailed breakdown of riparian buffer management polygons.

GK8345

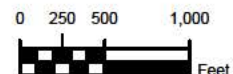
November 2022



Legend

Property Boundary	Riparian Buffer Prescription
Estimated Bank Boundary	Preservation (<10% planting)
Conceptual Stream Alignment	Low Enhancement (11 - 50% planting)
Riparian Buffer Management Polygon	High Enhancement (>51% planting)
Approximate Wetland Boundary	Approximate Wetland Boundary
	Approximate Wetland Boundary

Note, refer to Appendix A for detailed breakdown of riparian buffer management polygons.



**Riparian Buffer Prescriptions
(Stream 02 and Oakmulgee Creek Watersheds)**

Central Alabama Mitigation Bank
Perry County, Alabama

Geosyntec
consultants

Figure

16a

GK8345

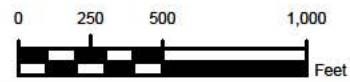
November 2022



- Legend**
- Property Boundary
 - Estimated Bank Boundary
 - Conceptual Stream Alignment
 - Riparian Buffer Management Polygon
 - Approximate Wetland Boundary

- Riparian Buffer Prescription**
- Preservation (<10% planting)
 - Low Enhancement (11 - 50% planting)
 - High Enhancement (>51% planting)
 - Approximate Wetland Boundary
 - Approximate Wetland Boundary

Note, refer to Appendix A for detailed breakdown of riparian buffer management polygons.



**Riparian Buffer Prescriptions
(Stream 07 and Oakmulgee Creek Watersheds)**

Central Alabama Mitigation Bank
Perry County, Alabama



**Figure
16b**

GK8345

November 2022