



DEPARTMENT OF THE ARMY  
U.S. ARMY CORPS OF ENGINEERS, MOBILE DISTRICT  
600 VESTAVIA PARKWAY, SUITE 203  
THE SHELBY BUILDING  
VESTAVIA HILLS, AL 35216

CESAM-RD-N

8 SEPTEMBER 2026

MEMORANDUM FOR RECORD

SUBJECT: US Army Corps of Engineers (Corps) Pre-2015 Regulatory Regime  
Approved Jurisdictional Determination in Light of *Sackett v. EPA*, 143 S. Ct. 1322  
(2023),<sup>1</sup> SAM-2023-01037-MH (MFR 1 of 1)<sup>2</sup>

BACKGROUND. An Approved Jurisdictional Determination (AJD) is a Corps document stating the presence or absence of waters of the United States on a parcel or a written statement and map identifying the limits of waters of the United States on a parcel. AJDs are clearly designated appealable actions and will include a basis of JD with the document.<sup>3</sup> AJDs are case-specific and are typically made in response to a request. AJDs are valid for a period of five years unless new information warrants revision of the determination before the expiration date or a District Engineer has identified, after public notice and comment, that specific geographic areas with rapidly changing environmental conditions merit re-verification on a more frequent basis.<sup>4</sup> For the purposes of this AJD, we have relied on section 10 of the Rivers and Harbors Act of 1899 (RHA),<sup>5</sup> the Clean Water Act (CWA) implementing regulations published by the Department of the Army in 1986 and amended in 1993 (references 2.a. and 2.b. respectively), the 2008 *Rapanos-Carabell* guidance (reference 2.c.), and other applicable guidance, relevant case law and longstanding practice, (collectively the pre-2015 regulatory regime), and the *Sackett* decision (reference 2.d.) in evaluating jurisdiction.

This Memorandum for Record (MFR) constitutes the basis of jurisdiction for a Corps AJD as defined in 33 CFR §331.2. The features addressed in this AJD were evaluated consistent with the definition of “waters of the United States” found in the pre-2015 regulatory regime and consistent with the Supreme Court’s decision in *Sackett*. This AJD did not rely on the 2023 “Revised Definition of ‘Waters of the United States,’” as

---

<sup>1</sup> While the Supreme Court’s decision in *Sackett* had no effect on some categories of waters covered under the CWA, and no effect on any waters covered under RHA, all categories are included in this Memorandum for Record for efficiency.

<sup>2</sup> When documenting aquatic resources within the review area that are jurisdictional under the Clean Water Act (CWA), use an additional MFR and group the aquatic resources on each MFR based on the TNW, interstate water, or territorial seas that they are connected to. Be sure to provide an identifier to indicate when there are multiple MFRs associated with a single AJD request (i.e., number them 1, 2, 3, etc.).

<sup>3</sup> 33 CFR 331.2.

<sup>4</sup> Regulatory Guidance Letter 05-02.

<sup>5</sup> USACE has authority under both Section 9 and Section 10 of the Rivers and Harbors Act of 1899 but for convenience, in this MFR, jurisdiction under RHA will be referred to as Section 10.

CESAM-RD-N

SUBJECT: Pre-2015 Regulatory Regime Approved Jurisdictional Determination in Light of *Sackett v. EPA*, 143 S. Ct. 1322 (2023), SAM-2023-01037-MH

amended on 8 September 2023 (Amended 2023 Rule) because, as of the date of this decision, the Amended 2023 Rule is not applicable Mississippi due to litigation.

## 1. SUMMARY OF CONCLUSIONS.

- a. Provide a list of each individual feature within the review area and the jurisdictional status of each one (i.e., identify whether each feature is/is not a water of the United States and/or a navigable water of the United States).
  - i. WL-4, non-jurisdictional wetland without a continuous surface connection to a requisite water.

## 2. REFERENCES.

- a. Final Rule for Regulatory Programs of the Corps of Engineers, 51 FR 41206 (November 13, 1986).
- b. Clean Water Act Regulatory Programs, 58 FR 45008 (August 25, 1993).
- c. U.S. EPA & U.S. Army Corps of Engineers, Clean Water Act Jurisdiction Following the U.S. Supreme Court's Decision in *Rapanos v. United States & Carabell v. United States* (December 2, 2008)
- d. *Sackett v. EPA*, 598 U.S. 651, 143 S. Ct. 1322 (2023)

3. REVIEW AREA. The review area for this AJD is limited to the 0.21-acre feature identified as WL-4, within an approximately 33.2-acre parcel in Meridian, Lauderdale County, Mississippi. The center of the review area is Latitude 32.379449, Longitude -88.647822 and is located in the Chunky-Okatibbee 8-digit hydrologic unit code (HUC 03170001). The attached figures depict the review area. Features WL-1, WL-2, WL-3, WL-5, S-1, S-2 and S-3 were previously reviewed under a preliminary jurisdictional determination issued May 6, 2024. The applicant has requested the re-evaluation of WL-4 under the March 12, 2025 EPA and the Department of Army Joint Memo concerning the implementation of "Continuous Surface Connection".
4. NEAREST TRADITIONAL NAVIGABLE WATER (TNW), INTERSTATE WATER, OR THE TERRITORIAL SEAS TO WHICH THE AQUATIC RESOURCE IS CONNECTED. The nearest TNW to which the jurisdictional aquatic resource is

CESAM-RD-N

SUBJECT: Pre-2015 Regulatory Regime Approved Jurisdictional Determination in Light of *Sackett v. EPA*, 143 S. Ct. 1322 (2023), SAM-2023-01037-MH

connected is the Chickasawhay River. The Chickasawhay River is on the Mobile District's Section 10 list and is therefore a TNW.<sup>6</sup>

5. FLOWPATH FROM THE SUBJECT AQUATIC RESOURCES TO A TNW, INTERSTATE WATER, OR THE TERRITORIAL SEAS

WL-4 is approximately 0.21 acre and abuts S-2 (non-RPW). S-2 extends from WL-4 and flows northwest then southwest for 73 linear feet into WL-3. WL-3 is approximately 0.022 acre and abuts S-2. WL-3 discharges into a man-made drainage channel outside of the project area. The man-made drainage channel flows west for approximately 150 linear feet and then converges with a road-side ditch. The roadside ditch flows southwest for approximately 785 linear feet, then drains into an unnamed tributary. The unnamed tributary flows to the north for approximately 0.71 mile then converges with Clear Branch. Clear Branch flows for approximately 0.73 mile then converges with Sowashee Creek. Sowashee Creek flows for approximately 10.7 miles then converges with Okatibbee Creek. Okatibbee Creek flows for approximately 17.71 miles then converges with Chickasawhay River above river mile 158. The Chickasawhay River becomes a TNW at river mile 130, which is the beginning of the Section 10 designation.

6. SECTION 10 JURISDICTIONAL WATERS<sup>7</sup>: Describe aquatic resources or other features within the review area determined to be jurisdictional in accordance with Section 10 of the Rivers and Harbors Act of 1899. Include the size of each aquatic resource or other feature within the review area and how it was determined to be jurisdictional in accordance with Section 10.<sup>8</sup> N/A

7. SECTION 404 JURISDICTIONAL WATERS: Describe the aquatic resources within the review area that were found to meet the definition of waters of the United States in accordance with the pre-2015 regulatory regime and consistent with the Supreme Court's decision in *Sackett*. List each aquatic resource separately, by name,

---

<sup>6</sup> This MFR should not be used to complete a new stand-alone TNW determination. A stand-alone TNW determination for a water that is not subject to Section 9 or 10 of the Rivers and Harbors Act of 1899 (RHA) is completed independently of a request for an AJD. A stand-alone TNW determination is conducted for a specific segment of river or stream or other type of waterbody, such as a lake, where upstream or downstream limits or lake borders are established.

<sup>7</sup> 33 CFR 329.9(a) A waterbody which was navigable in its natural or improved state, or which was susceptible of reasonable improvement (as discussed in § 329.8(b) of this part) retains its character as "navigable in law" even though it is not presently used for commerce, or is presently incapable of such use because of changed conditions or the presence of obstructions.

<sup>8</sup> This MFR is not to be used to make a report of findings to support a determination that the water is a navigable water of the United States. The district must follow the procedures outlined in 33 CFR part 329.14 to make a determination that water is a navigable water of the United States subject to Section 10 of the RHA.

consistent with the naming convention used in section 1, above. Include a rationale for each aquatic resource, supporting that the aquatic resource meets the relevant category of “waters of the United States” in the pre-2015 regulatory regime. The rationale should also include a written description of, or reference to a map in the administrative record that shows, the lateral limits of jurisdiction for each aquatic resource, including how that limit was determined, and incorporate relevant references used. Include the size of each aquatic resource in acres or linear feet and attach and reference related figures as needed.

- a. TNWs (a)(1): N/A
- b. Interstate Waters (a)(2): N/A
- c. Other Waters (a)(3): N/A
- d. Impoundments (a)(4): N/A
- e. Tributaries (a)(5): N/A
- f. The territorial seas (a)(6): N/A
- g. Adjacent wetlands (a)(7): N/A

## 8. NON-JURISDICTIONAL AQUATIC RESOURCES AND FEATURES

- a. Describe aquatic resources and other features within the review area identified as “generally non-jurisdictional” in the preamble to the 1986 regulations (referred to as “preamble waters”).<sup>9</sup> Include size of the aquatic resource or feature within the review area and describe how it was determined to be non-jurisdictional under the CWA as a preamble water. N/A
- b. Describe aquatic resources and features within the review area identified as “generally not jurisdictional” in the *Rapanos* guidance. Include size of the aquatic resource or feature within the review area and describe how it was determined to be non-jurisdictional under the CWA based on the criteria listed in the guidance. N/A
- c. Describe aquatic resources and features identified within the review area as waste treatment systems, including treatment ponds or lagoons designed to meet the requirements of CWA. Include the size of the waste treatment system within

---

<sup>9</sup> 51 FR 41217, November 13, 1986.

the review area and describe how it was determined to be a waste treatment system. N/A

- d. Describe aquatic resources and features within the review area determined to be prior converted cropland in accordance with the 1993 regulations (reference 2.b.). Include the size of the aquatic resource or feature within the review area and describe how it was determined to be prior converted cropland. N/A
- e. Describe aquatic resources (i.e. lakes and ponds) within the review area, which do not have a nexus to interstate or foreign commerce, and prior to the January 2001 Supreme Court decision in “*SWANCC*,” would have been jurisdictional based solely on the “Migratory Bird Rule.” Include the size of the aquatic resource or feature, and how it was determined to be an “isolated water” in accordance with *SWANCC*. N/A
- f. Describe aquatic resources and features within the review area that were determined to be non-jurisdictional because they do not meet one or more categories of waters of the United States under the pre-2015 regulatory regime consistent with the Supreme Court’s decision in *Sackett* (e.g., tributaries that are non-relatively permanent waters; non-tidal wetlands that do not have a continuous surface connection to a jurisdictional water).

Wetland W-4 is an approximately 0.21-acre palustrine emergent wetland centered at Latitude 32.37971, Longitude -88.649889. Wetland W-4 is located within a low lying area surrounded primarily by uplands and abuts a non-relatively permanent tributary outside of the review area. Wetland W-4 was determined to be non-jurisdictional because it does not abut a requisite water (TNW, territorial seas, interstate water, relatively permanent tributary, or jurisdictional impoundment), thereby lacking a continuous surface connection to a requisite water.

- 9. DATA SOURCES. List sources of data/information used in making determination. Include titles and dates of sources used and ensure that information referenced is available in the administrative record.
  - a. In office evaluation using desktop resources was completed on September 5, 2025.
  - b. Attachment 1 Maps 1-4 in Pittman Environmental Services, LLC’s “Preliminary Wetland Delineation”, October 31, 2023.

CESAM-RD-N

SUBJECT: Pre-2015 Regulatory Regime Approved Jurisdictional Determination in Light of *Sackett v. EPA*, 143 S. Ct. 1322 (2023), SAM-2023-01037-MH

- c. Aquatic Resources Map, in Pittman Environmental Services, LLC.'s Approved Jurisdictional Determinations Re-evaluation Request, March 22, 2025.
- d. National Regulatory Viewer – USGS Topo map, aerial imagery, 3DEP Hillshade, 3DEP Digital Elevation Model; accessed September 5, 2025.
- e. Environmental Protection Agency Waters GeoViewer 2.0, accessed September 5, 2025.

10. OTHER SUPPORTING INFORMATION.

“Memorandum to the Field Between the U.S. Department of the Army, U.S. Army Corps of Engineers and the U.S. Environmental Protection Agency Concerning the Proper Implementation of ‘Continuous Surface Connection’ Under the Definition of ‘Waters of the United States’ Under the Clean Water Act”, March 12, 2025.

11. NOTE: The structure and format of this MFR were developed in coordination with the EPA and Department of the Army. The MFR's structure and format may be subject to future modification or may be rescinded as needed to implement additional guidance from the agencies; however, the approved jurisdictional determination described herein is a final agency action.



**Preliminary Wetland Delineation  
Proposed Development Site  
Approximately 33.2 Acres**

**32.379449, -88.647822  
Section 10, T-6N, R-16E  
Lauderdale County, MS**



FID	Shape *	Id	Acres	Cowardin	Lat	Long
0	Point	1	0.20	PEM	32.37801	-88.64797
1	Point	2	0.066	PFO	32.37978	-88.645578
2	Point	3	0.022	PFO	32.37986	-88.650352
3	Point	4	0.21	PEM	32.37971	-88.649889
4	Point	5	0.18	PSS	32.37803	-88.652406
5	Point	6	0.09	PSS	32.37776	-88.652155

FID	Shape *	Id	LF	Cowardin	Lat	Long
0	Point	1	314	R6	32.379423	-88.645742
1	Point	2	73	R6	32.379968	-88.650063
2	Point	3	46	R4SBC	32.377843	-88.651847

Due to unavoidable proposed impacts to this 0.21 acre feature, the owner would like to request an AJD for this feature.

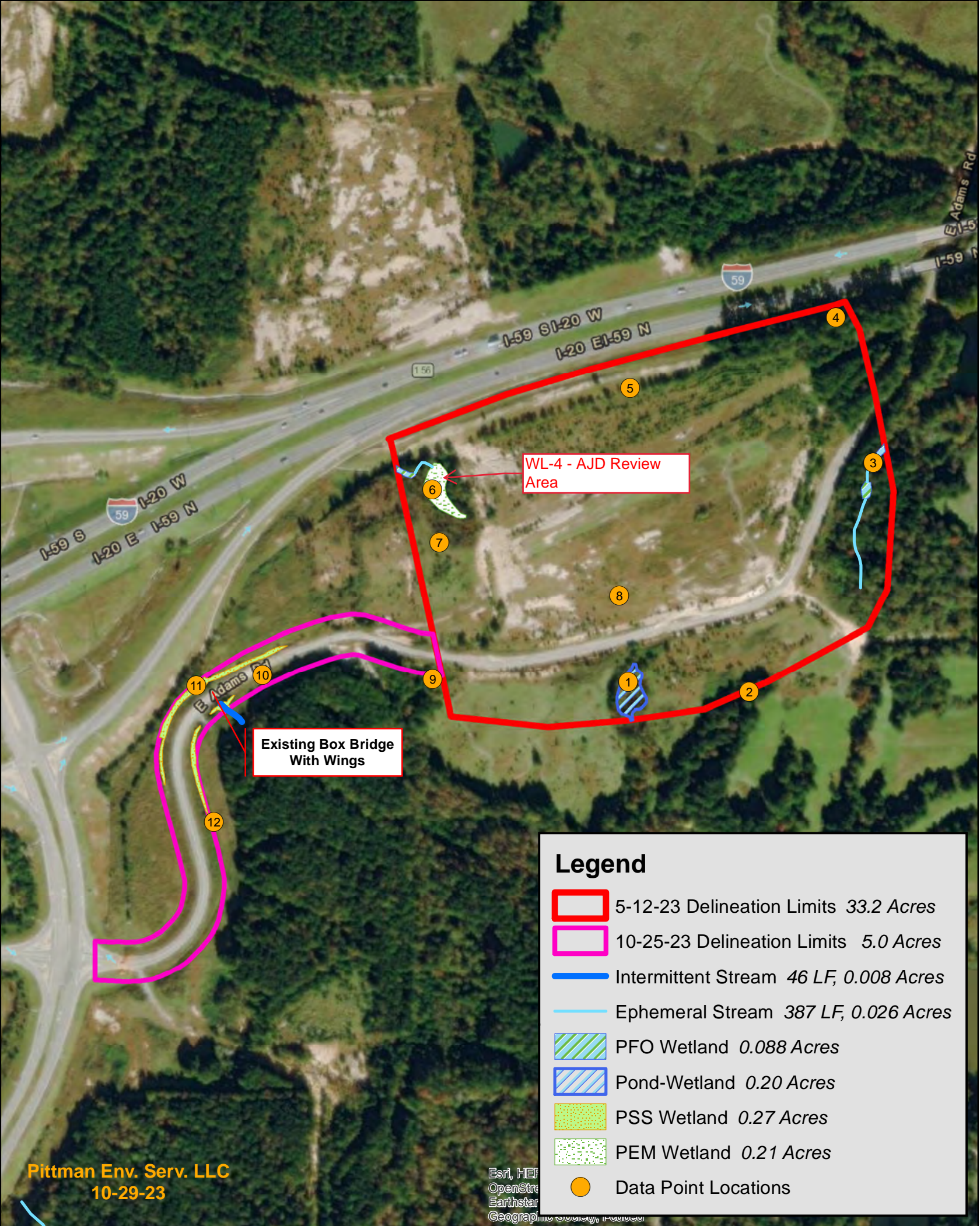
WL-4 - AJD Review Area

Existing Box Bridge With Wings

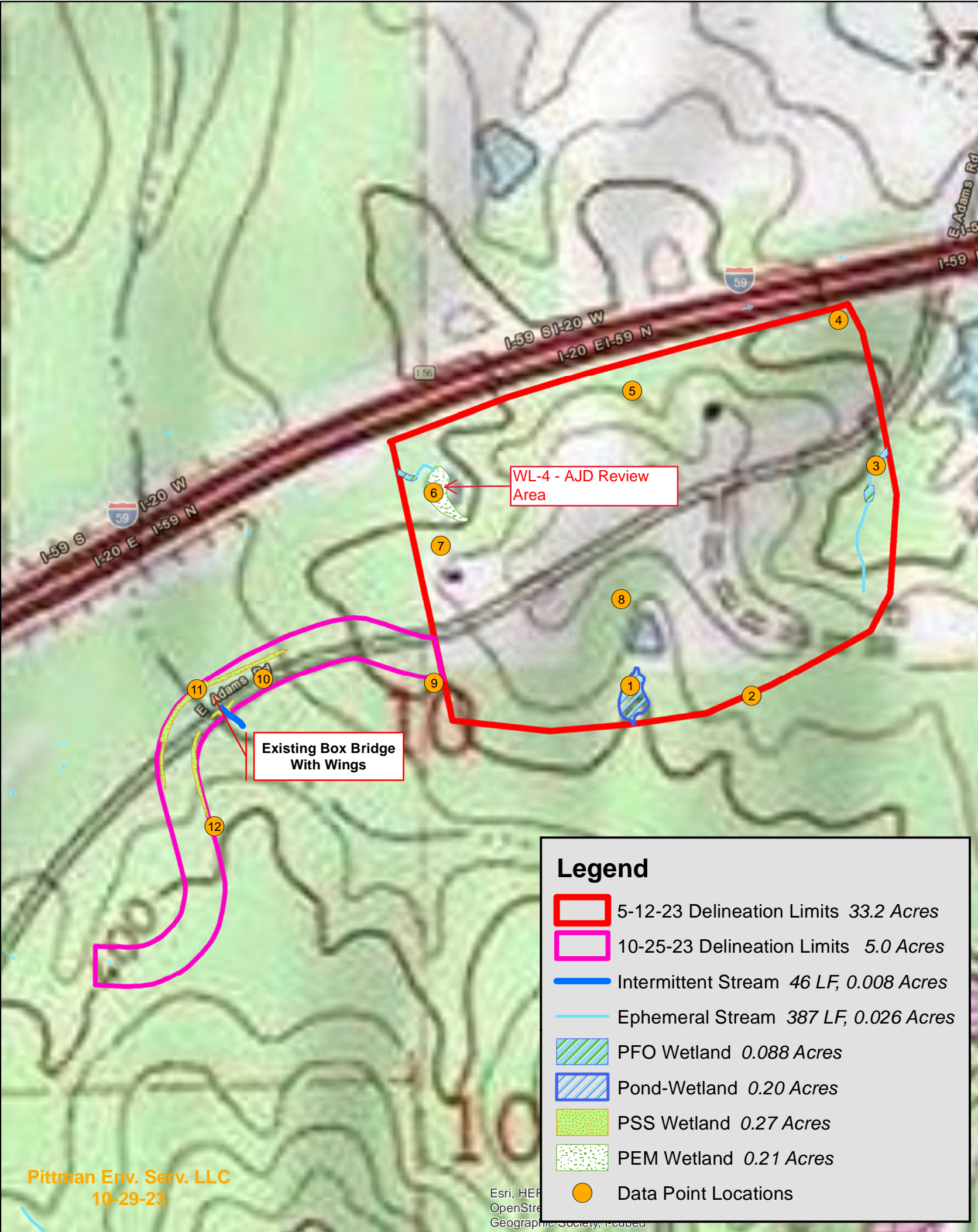
## Legend

- Stream ID
- Wetland ID
- 5-12-23 Delineation Limits 33.2 Acres
- 10-25-23 Delineation Limits 5.0 Acres
- Intermittent Stream 46 LF, 0.008 Acres
- Ephemeral Stream 387 LF, 0.026 Acres
- PFO Wetland 0.088 Acres
- Pond-Wetland 0.20 Acres
- PSS Wetland 0.27 Acres
- PEM Wetland 0.21 Acres









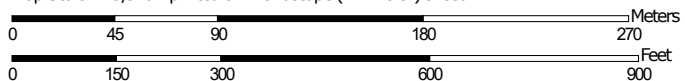


# Hydric Rating by Map Unit—Lauderdale County, Mississippi (MeridianDev)



Soil Map may not be valid at this scale.

Map Scale: 1:3,310 if printed on A landscape (11" x 8.5") sheet.



Map projection: Web Mercator Corner coordinates: WGS84 Edge tics: UTM Zone 16N WGS84



**Natural Resources  
Conservation Service**

Web Soil Survey  
National Cooperative Soil Survey

5/16/2023  
Page 1 of 5



# Hydric Rating by Map Unit—Lauderdale County, Mississippi (10-25 Del. Limits)

