



REPLY TO  
ATTENTION OF.

**DEPARTMENT OF THE ARMY**  
**U.S. ARMY CORPS OF ENGINEERS, MOBILE DISTRICT**  
**600 VESTAVIA PARKWAY, SUITE 203**  
**THE SHELBY BUILDING**  
**VESTAVIA HILLS, AL 35216**

October 24, 2023

North Branch  
Regulatory Division

SUBJECT: Department of the Army File Number SAM-2022-01209-SNR, [REDACTED]  
[REDACTED] – Saltillo: SIMP – Barnes Crossing to Guntown Natural Gas Pipeline, Lee County,  
Mississippi

[REDACTED]

Transmitted electronically to [REDACTED]

[REDACTED]

This is in response to a request submitted on your behalf by your consultant, [REDACTED], for a Department of the Army (DA) jurisdictional determination on an approximately 78.65-acre parcel in Saltillo and Guntown, Lee County, Mississippi. More specifically, the site is located within Sections 5, 6, 7, 8, 16, 17, 21, 28, 29, and 32, Township 8 and 9 South, Range 6 East, beginning at Latitude N34.390938, Longitude W88.690392 and ending at Latitude N34.315132, Longitude W88.696538.

Based on information obtained during our review of information provided by your consultant, as well as other desktop resources, we have determined the boundary of potential waters of the United States (U.S.) to be accurate as shown on the attached delineation boundary figures. For regulatory purposes, the United States Army Corps of Engineers (USACE) defines wetlands as those areas that are inundated or saturated by surface or groundwater at a frequency and duration sufficient to support, and under normal circumstances do support, a prevalence of vegetation typically adapted for life in saturated soil conditions. Please be advised that this determination reflects current policy and regulation.

Your delineation site was reviewed pursuant to Section 404 of the Clean Water Act. Section 404 of the Clean Water Act requires that a DA permit be obtained for the placement or discharge of dredged and/or fill material into waters of the U.S., including streams and wetlands, prior to conducting the work (33 U.S.C. 1344). Please be advised that land clearing operations involving vegetation removal with mechanized equipment such as front-end loaders, backhoes, or bulldozers with shear blades, rakes, or discs; windrowing vegetation; land leveling; or other soil disturbance in areas subject to USACE jurisdiction are considered placement of dredged and/or fill material under our jurisdiction. If future work proposed at this site includes a discharge or placement of dredged and/or fill material into waters of the U.S., a DA permit is required prior to initiating work.

Attached to this letter is a copy of the Preliminary Jurisdictional Determination (PJD) form for the wetlands and/or other waters identified on the project site. This PJD treats the wetlands and waters of the U.S. on the site as jurisdictional for the purposes of determining impacts and mitigation requirements. The PJD is a non-binding action and shall remain in effect unless new information or a request for an approved jurisdictional determination supporting a revision is provided to this office. Please note that since this jurisdictional determination is a preliminary, it is subject to change and therefore is not an appealable action under the USACE administrative appeal procedures defined at 33 CFR 331.

Included in our review are features that are not waters of the U.S. and therefore not subject to our Federal permitting authority. The attached approved JD Memorandum for Record (MFR) describes these areas. Please be advised that this approved jurisdictional determination MFR is based on current policy and regulation and is valid for a period of five (5) years from the date of this letter. If after the 5-year period this jurisdictional determination has not been specifically revalidated by the USACE, it shall automatically expire. If the information you have submitted, and on which the USACE has based its determination is later found to be in error, this decision may be revoked.

This letter contains an Approved Jurisdictional Determination MFR. If you object to this determination, you may request an administrative appeal under USACE regulations at 33 CFR Part 331. Attached you will find a Notification of Administrative Appeal (NAP) Options and Process and Request for Appeal (RFA) form. If you request to appeal this determination, you must submit a completed RFA for to the USACE, South Atlantic Division Office at the following mailing address and e-mail address: [REDACTED], Administrative Appeals Review Officer, CESAD-PDS-O, 60 Forsyth Street Southwest, Floor M9, Atlanta, Georgia 30303-8801; [REDACTED].

In order for an RFA to be accepted, the USACE must determine that it is complete, that it meets the criteria for appeal under 33 CFR Part 331.5, and that it has been received by the Division Office within 60 days of the date of the NAP. It is not necessary to submit an RFA form to the Division Office if you do not object to the determination in this letter.

The statements contained herein do not convey any property rights, or any exclusive privileges and do not authorize any injury to property or obviate the requirements to obtain other local, State or Federal approvals required by law.

The delineation included herein has been conducted to identify the location and extent of the aquatic resource boundaries and/or the jurisdictional status of aquatic resources for purposes of the Clean Water Act for the particular site identified in this request. This delineation and/or jurisdictional determination may not be valid for the Wetland Conservation Provisions of the Food Security Act of 1985, as amended. If you or your tenant are USDA program participants, or anticipate participation in USDA programs, you should discuss the applicability of a certified wetland determination with the local USDA service center, prior to starting work.

An electronic copy of this letter with attachments is being provided to your consultant, [REDACTED]

We appreciate your cooperation with the Corps of Engineers' Regulatory Program. Please refer to file number SAM-2022-01209-SNR in all future correspondence regarding this project or if you have any questions concerning this determination.

If you have any questions, please contact the project manager, [REDACTED], by telephone at [REDACTED] or by e-mail at [REDACTED]. For additional information about our Regulatory Program, visit our web site at <http://www.sam.usace.army.mil/Missions/Regulatory.aspx>. Please take a moment to complete our customer satisfaction survey located under the menu header on the right side of the webpage. Your responses are appreciated and will allow us to improve our services.

Sincerely,


[REDACTED]

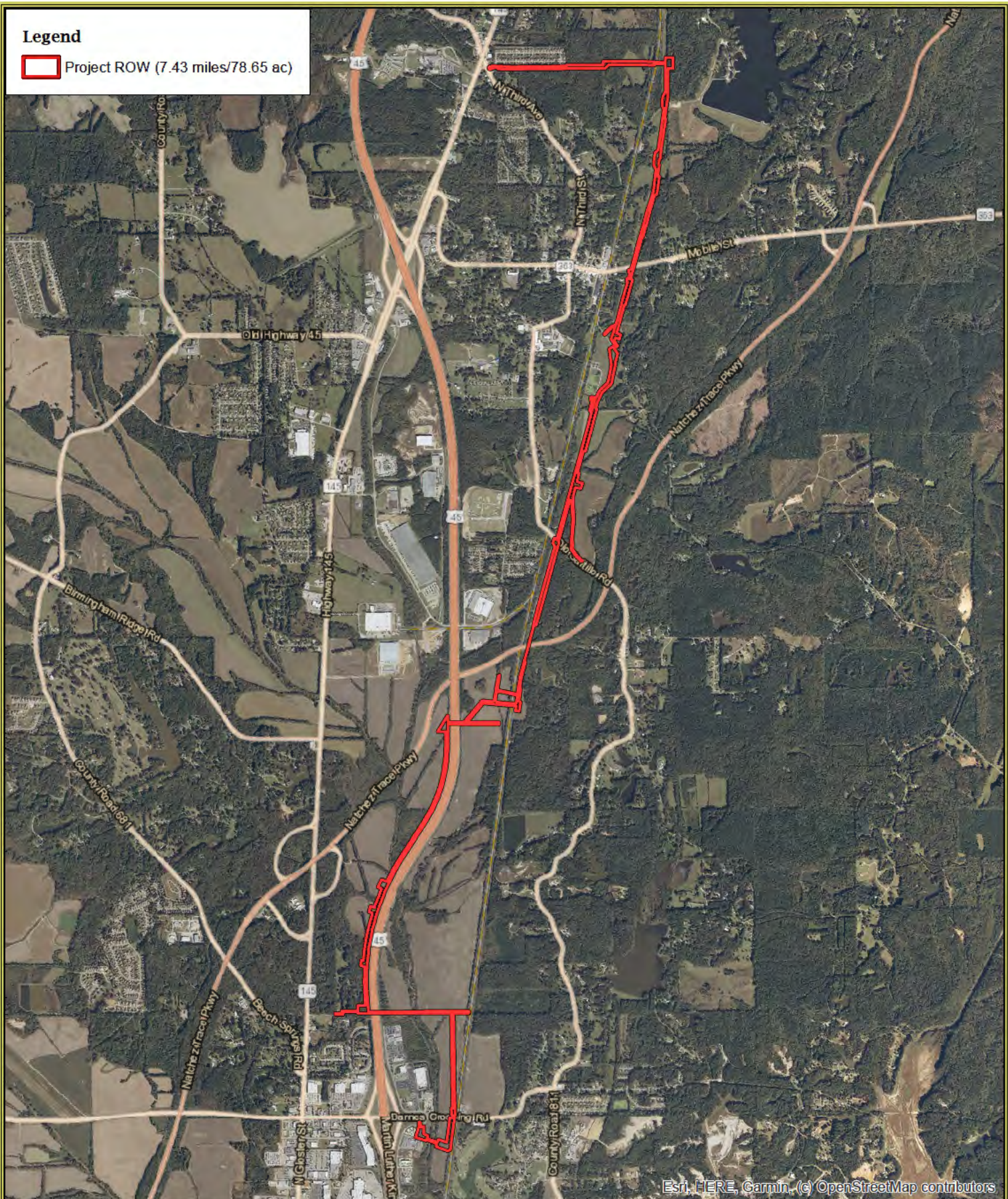
[REDACTED]

Attachments



**Legend**

 Project ROW (7.43 miles/78.65 ac)



Esri, HERE, Garmin, (c) OpenStreetMap contributors

**Barnes Crossing Project**

S16, 17, 21, 28, 29, & 32, T8S, R6E and S5, 6, 7 & 8, T9S, R6E  
Lee County, Mississippi

[Site Location Map](#)

0 350,000 700,000  
Feet

1:40,000



NAD 1983 StatePlane Mississippi East FIPS 2302 Feet


USDA NAIP 2021 Imagery Basemap

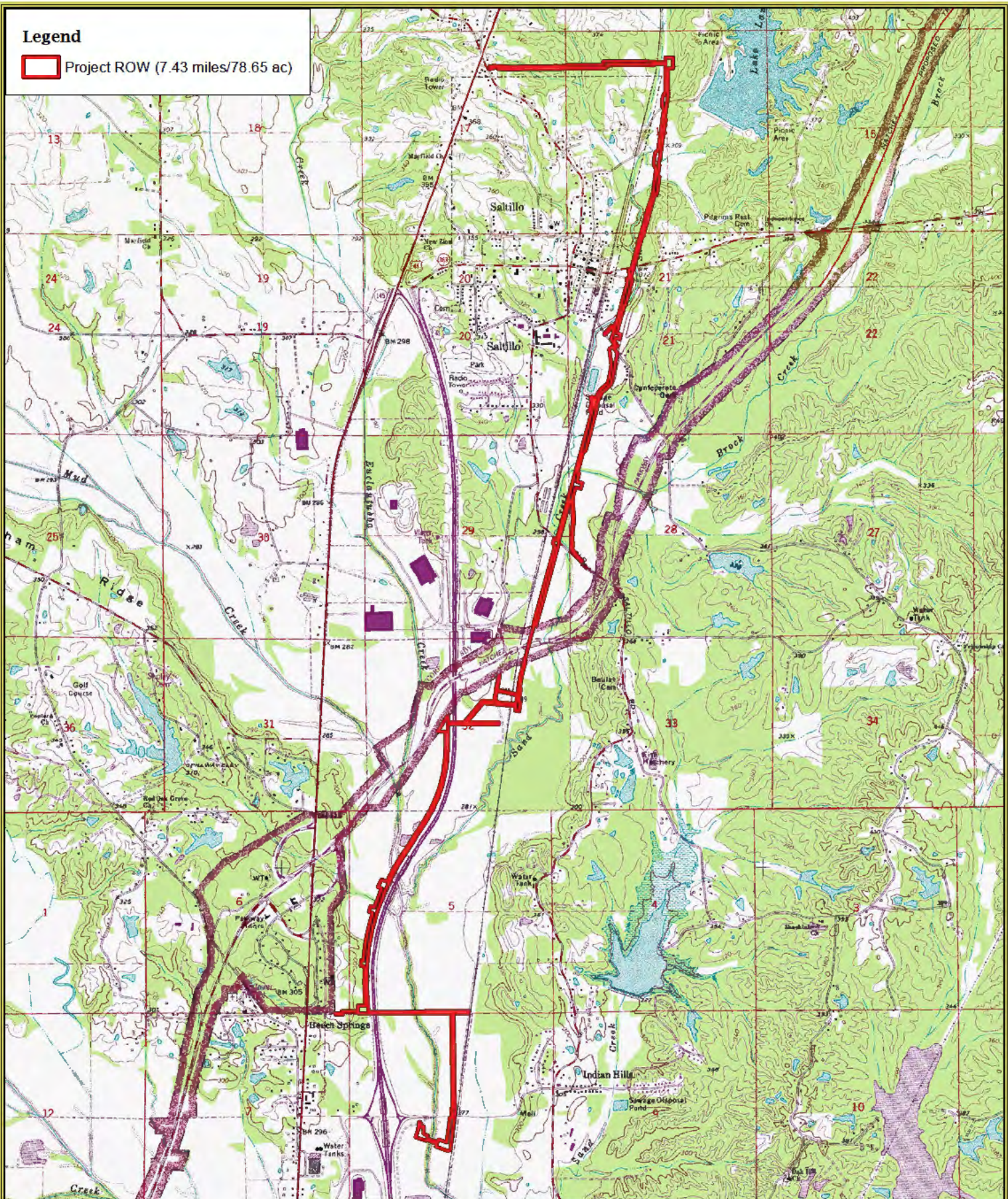
Date Created 12/6/2022

Created by 



**Legend**

 Project ROW (7.43 miles/78.65 ac)



**Barnes Crossing Project**

S16, 17, 21, 28, 29, & 32, T8S, R6E and S5, 6, 7 & 8, T9S, R6E  
Lee County, Mississippi

[Site Location Map](#)



1:40,000



NAD 1983 StatePlane Mississippi East FIPS 2302 Feet

USGS 1995 Guntown & Tupelo (MS) Quad Basemaps

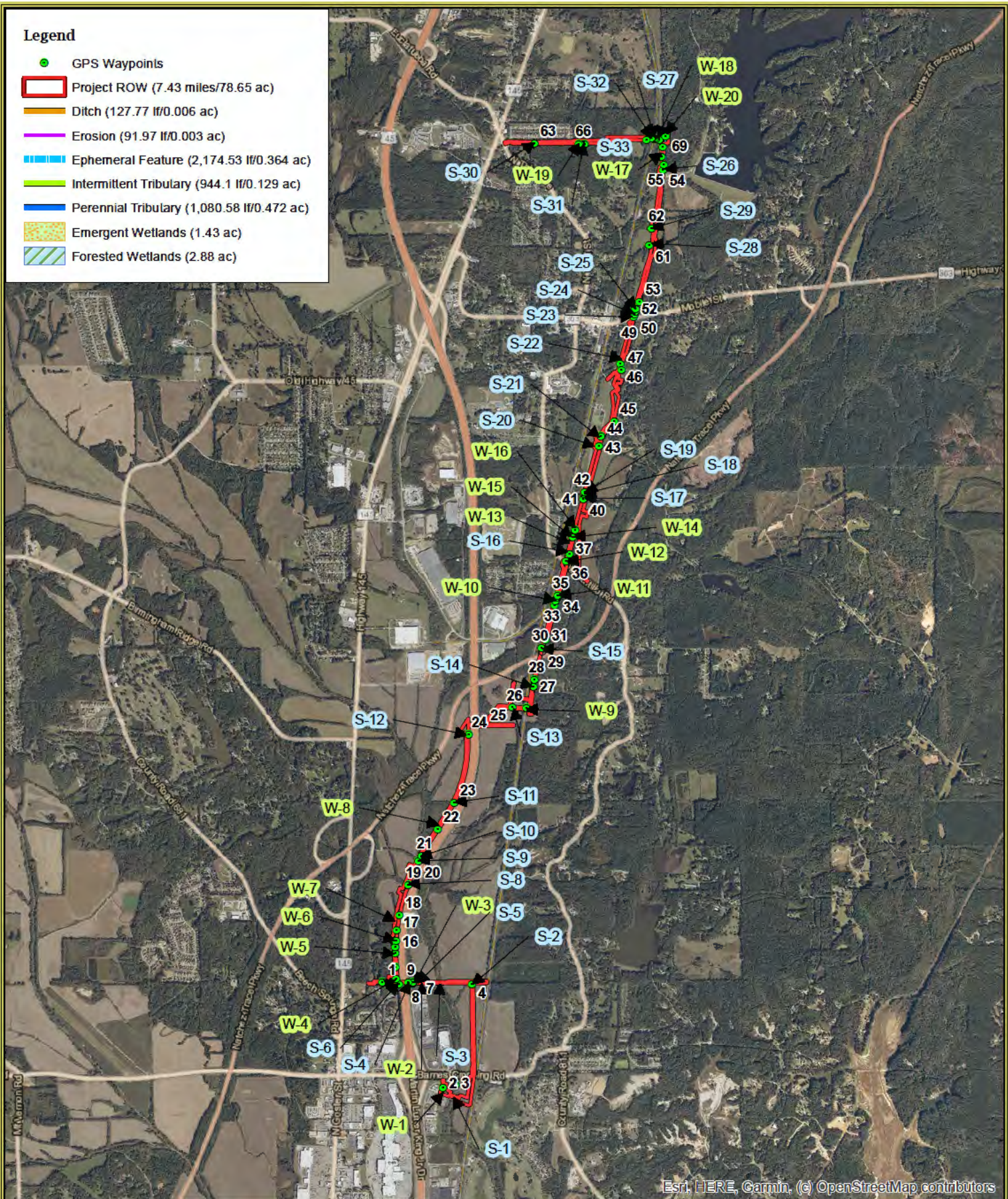
Date Created 12/6/2022

Created by 



**Legend**

- GPS Waypoints
- Project ROW (7.43 miles/78.65 ac)
- Ditch (127.77 lf/0.006 ac)
- Erosion (91.97 lf/0.003 ac)
- Ephemeral Feature (2,174.53 lf/0.364 ac)
- Intermittent Tributary (944.1 lf/0.129 ac)
- Perennial Tributary (1,080.58 lf/0.472 ac)
- Emergent Wetlands (1.43 ac)
- Forested Wetlands (2.88 ac)



Esri, HERE, Garmin, (c) OpenStreetMap contributors

Date Created 12/6/2022	Created by <span style="background-color: black; color: black;">██████████</span>

**Barnes Crossing Project**  
 S16, 17, 21, 28, 29, & 32, T8S, R6E and S5, 6, 7 & 8, T9S, R6E  
 Lee County, Mississippi  
[GPS/Wetland Location Map](#)

0 350,000 700,000 Feet

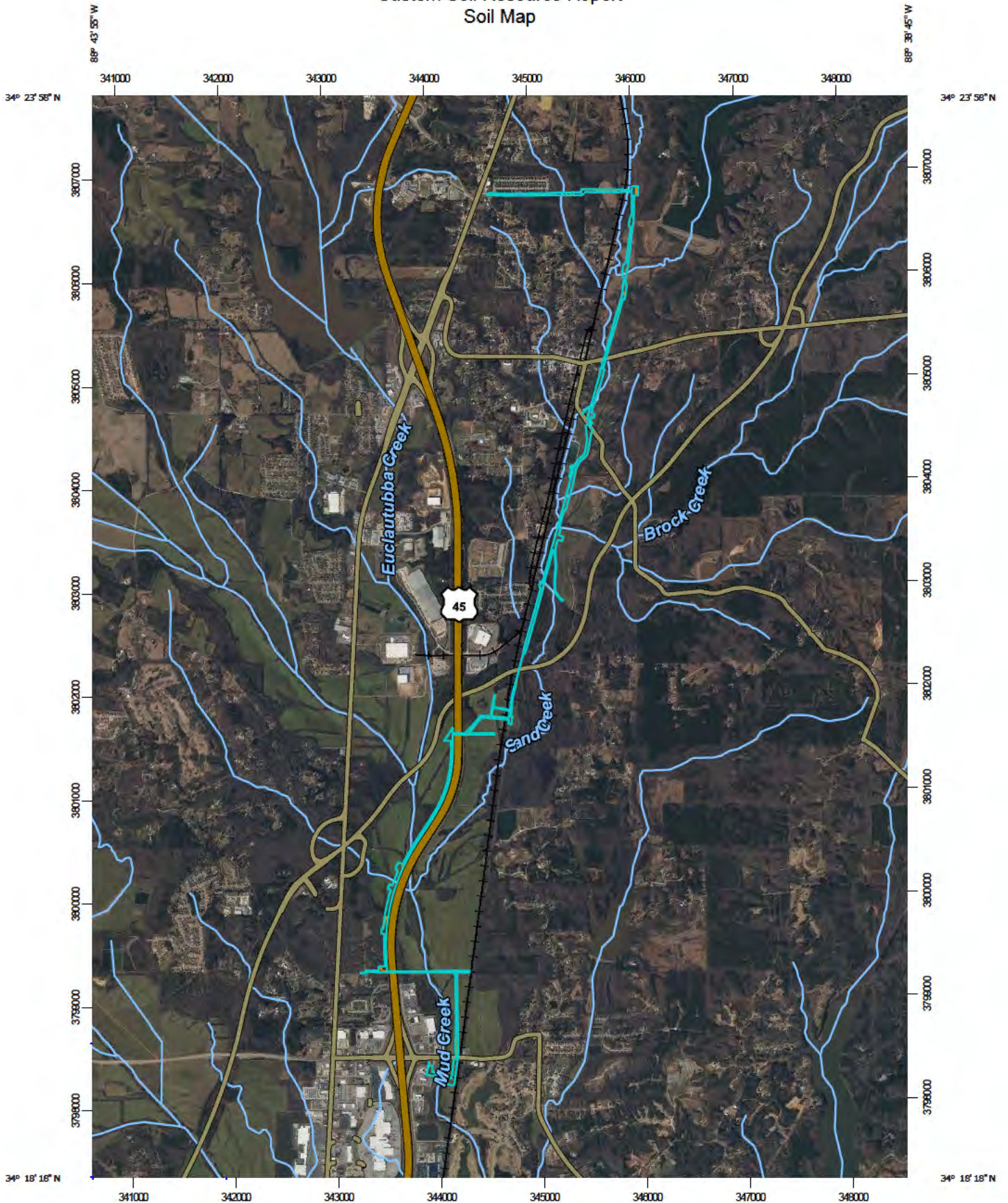
1:45,000

NAD 1983 StatePlane Mississippi East FIPS 2302 Feet

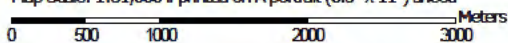
USDA NAIP 2021 Imagery Basemap



# Custom Soil Resource Report Soil Map



Map Scale: 1:51,000 if printed on A portrait (8.5" x 11") sheet.



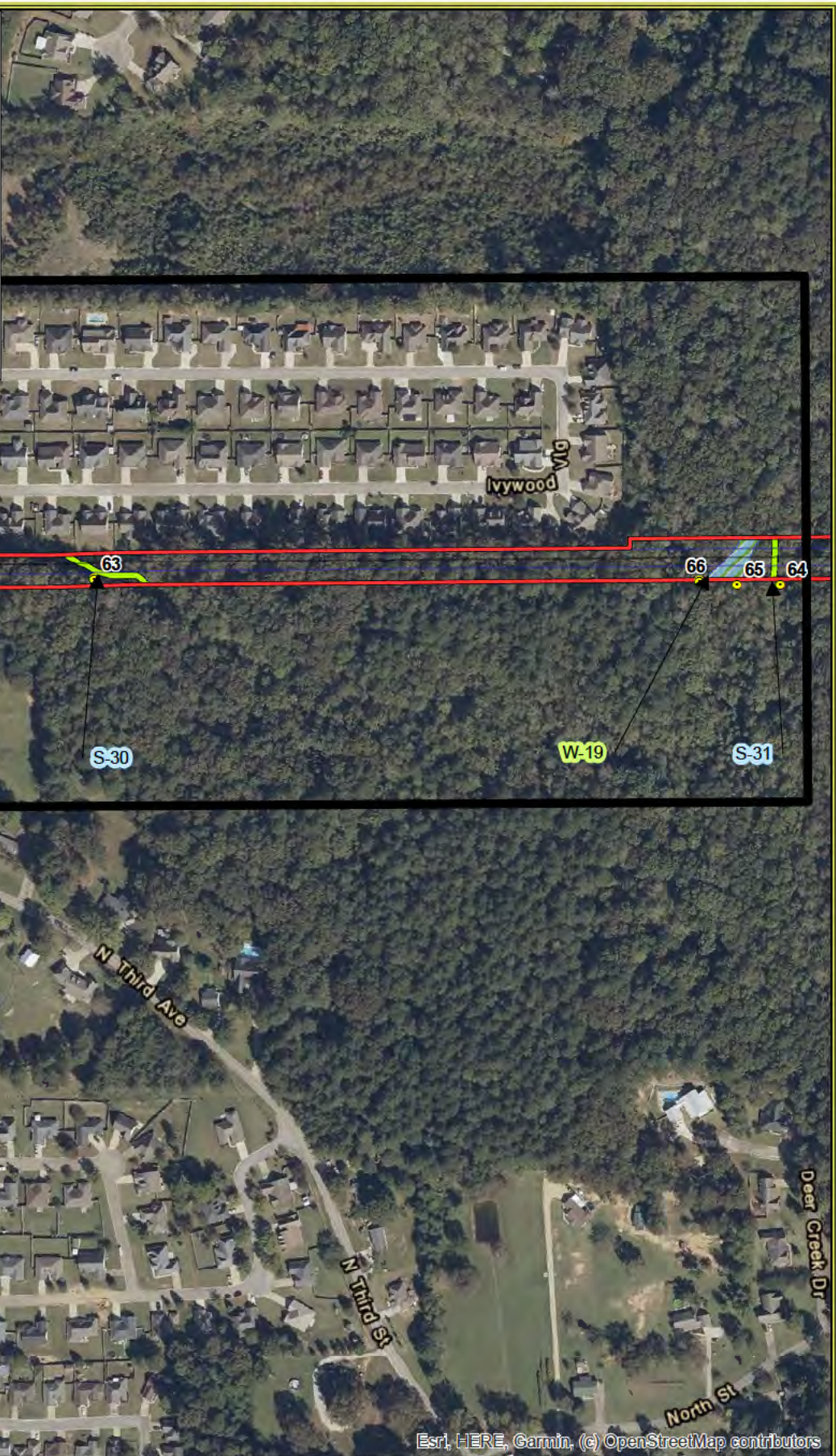
Map projection: Web Mercator Corner coordinates: WGS84 Edge tics: UTM Zone 16N WGS84





**Legend**

- GPS Waypoints
- Site Plan: Centerline
- Site Plan: HDD Bore
- Project ROW (7.43 miles/78.65 ac)
- Emergent Wetlands (1.43 ac)
- Forested Wetlands (2.88 ac)
- Ditch (127.77 lf/0.006 ac)
- Erosion (91.97 lf/0.003 ac)
- Ephemeral Feature (2,174.53 lf/0.364 ac)
- Intermittent Tributary (944.1 lf/0.129 ac)
- Perennial Tributary (1,080.58 lf/0.472 ac)



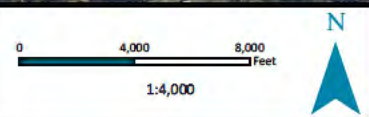
Esri, HERE, Garmin, (c) OpenStreetMap contributors

**Barnes Crossing Project**

S16, 17, 21, 28, 29, & 32, T8S, R6E and S5, 6, 7 & 8, T9S, R6E  
Lee County, Mississippi

[Site Plan Map](#)

[Map 1 of 16](#)



NAD 1983 StatePlane Mississippi East FIPS 2302 Feet

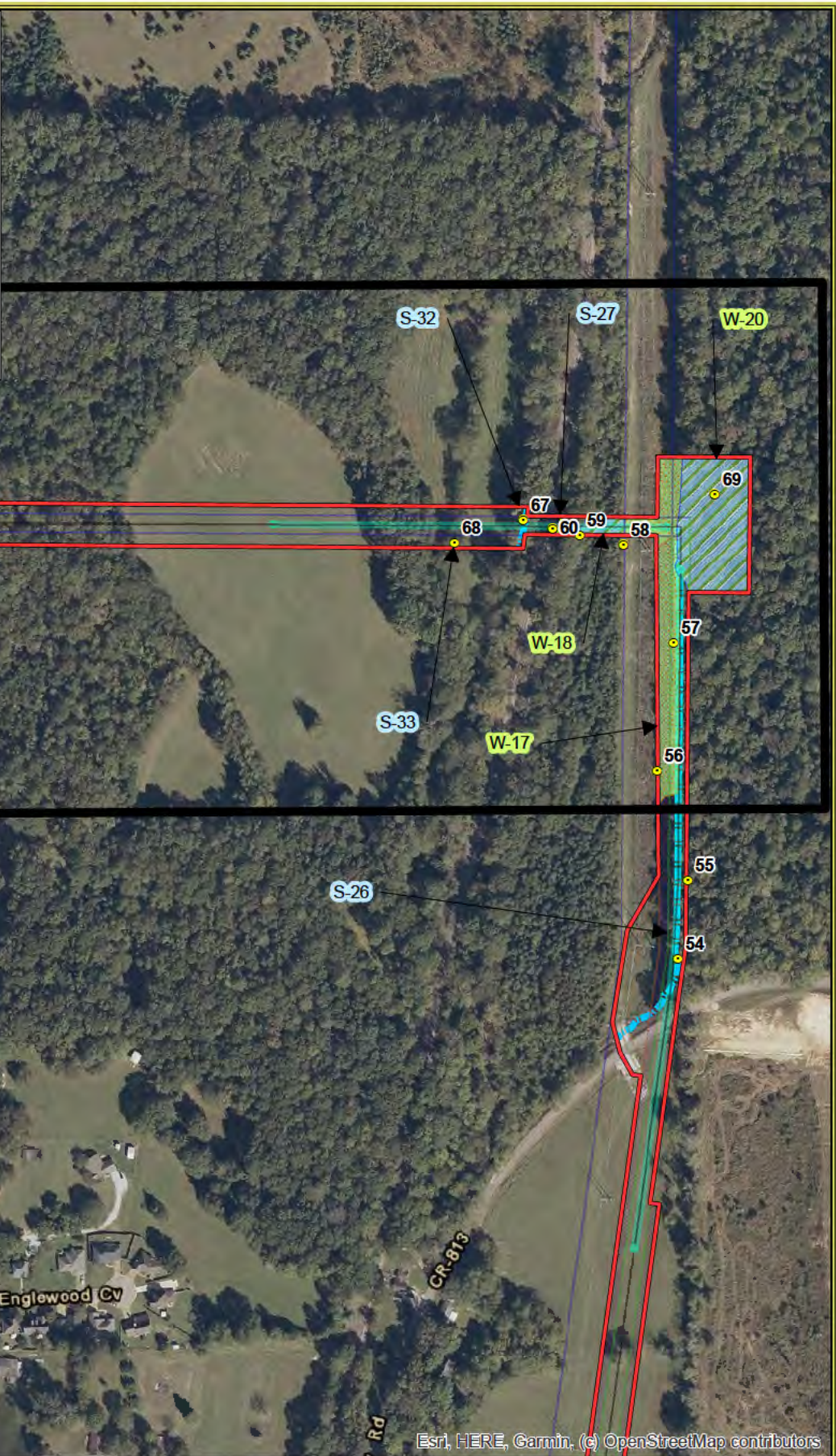
USDA NAIP 2021 Imagery Basemap

Date Created 12/6/2022 Created by [Redacted]



**Legend**

- GPS Waypoints
- Site Plan: Centerline
- Site Plan: HDD Bore
- Project ROW (7.43 miles/78.65 ac)
- Emergent Wetlands (1.43 ac)
- Forested Wetlands (2.88 ac)
- Ditch (127.77 lf/0.006 ac)
- Erosion (91.97 lf/0.003 ac)
- Ephemeral Feature (2,174.53 lf/0.364 ac)
- Intermittent Tributary (944.1 lf/0.129 ac)
- Perennial Tributary (1,080.58 lf/0.472 ac)



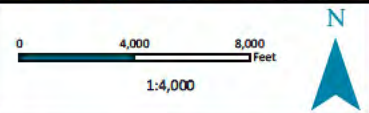
Esri, HERE, Garmin, (c) OpenStreetMap contributors

**Barnes Crossing Project**

S16, 17, 21, 28, 29, & 32, T8S, R6E and S5, 6, 7 & 8, T9S, R6E  
Lee County, Mississippi

Site Plan Map

**Map 2 of 16**



NAD 1983 StatePlane Mississippi East FIPS 2302 Feet

USDA NAIP 2021 Imagery Basemap

Date Created 12/6/2022

Created by [Redacted]



**Legend**

- GPS Waypoints
- Site Plan: Centerline
- Site Plan: HDD Bore
- Project ROW (7.43 miles/78.65 ac)
- Emergent Wetlands (1.43 ac)
- Forested Wetlands (2.88 ac)
- Ditch (127.77 lf/0.006 ac)
- Erosion (91.97 lf/0.003 ac)
- Ephemeral Feature (2,174.53 lf/0.364 ac)
- Intermittent Tributary (944.1 lf/0.129 ac)
- Perennial Tributary (1,080.58 lf/0.472 ac)



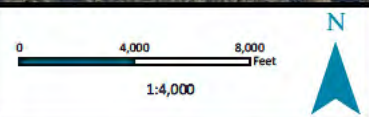
Esri, HERE, Garmin, (c) OpenStreetMap contributors

**Barnes Crossing Project**

S16, 17, 21, 28, 29, & 32, T8S, R6E and S5, 6, 7 & 8, T9S, R6E  
Lee County, Mississippi

Site Plan Map

**Map 3 of 16**



NAD 1983 StatePlane Mississippi East FIPS 2302 Feet

USDA NAIP 2021 Imagery Basemap

Date Created 12/6/2022 Created by [Redacted]



**Legend**

- GPS Waypoints
- Site Plan: Centerline
- Site Plan: HDD Bore
- Project ROW (7.43 miles/78.65 ac)
- Emergent Wetlands (1.43 ac)
- Forested Wetlands (2.88 ac)
- Ditch (127.77 lf/0.006 ac)
- Erosion (91.97 lf/0.003 ac)
- Ephemeral Feature (2,174.53 lf/0.364 ac)
- Intermittent Tributary (944.1 lf/0.129 ac)
- Perennial Tributary (1,080.58 lf/0.472 ac)



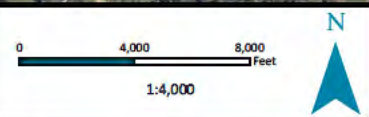
Esri, HERE, Garmin, (c) OpenStreetMap contributors

**Barnes Crossing Project**

S16, 17, 21, 28, 29, & 32, T8S, R6E and S5, 6, 7 & 8, T9S, R6E  
Lee County, Mississippi

Site Plan Map

Map 4 of 16



NAD 1983 StatePlane Mississippi East FIPS 2302 Feet

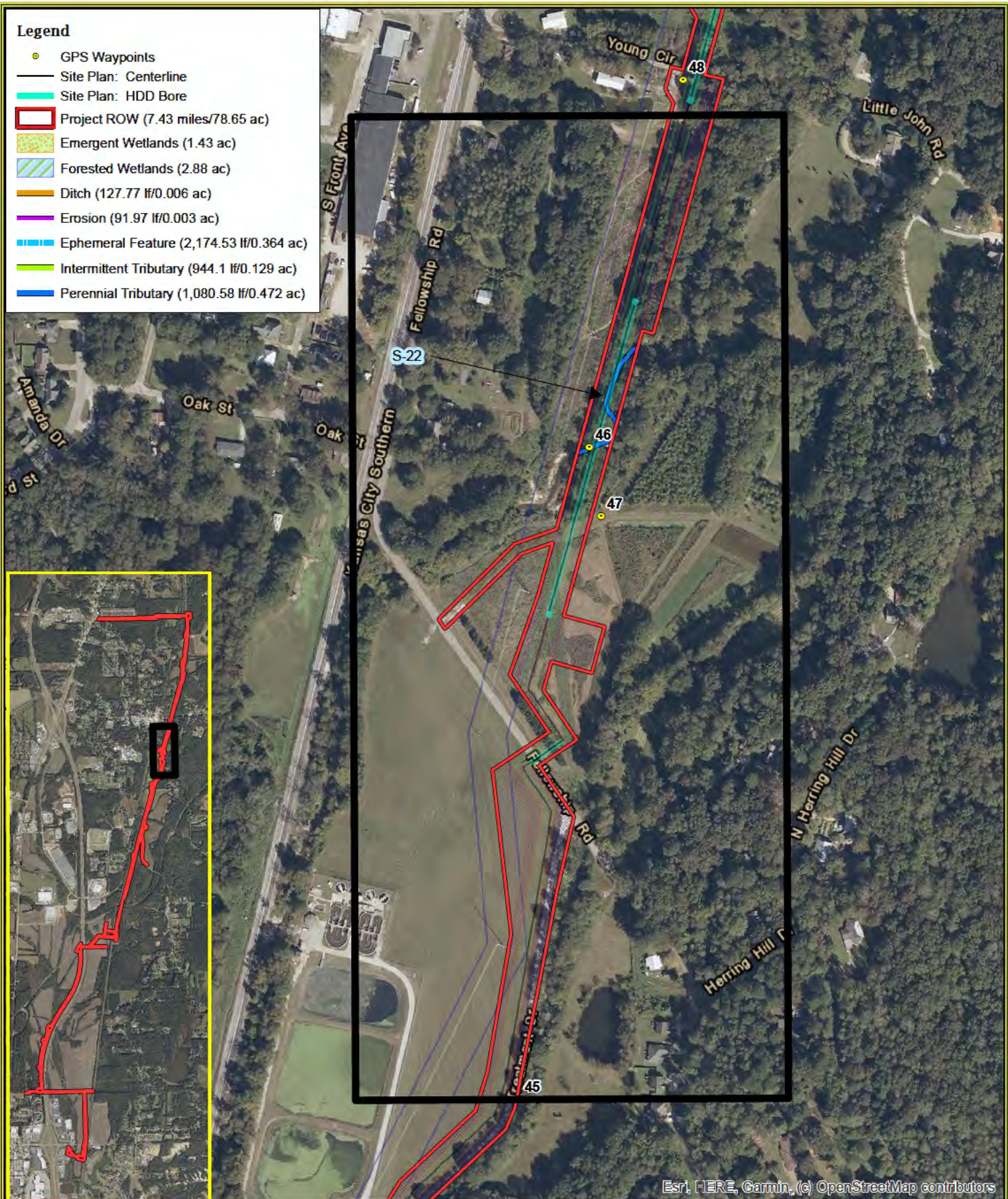
USDA NAIP 2021 Imagery Basemap

Date Created 12/6/2022 Created by [Redacted]



**Legend**

- GPS Waypoints
- Site Plan: Centerline
- Site Plan: HDD Bore
- Project ROW (7.43 miles/78.65 ac)
- Emergent Wetlands (1.43 ac)
- Forested Wetlands (2.88 ac)
- Ditch (127.77 lf/0.006 ac)
- Erosion (91.97 lf/0.003 ac)
- Ephemeral Feature (2,174.53 lf/0.364 ac)
- Intermittent Tributary (944.1 lf/0.129 ac)
- Perennial Tributary (1,080.58 lf/0.472 ac)



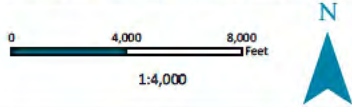
Esri, HERE, Garmin, (c) OpenStreetMap contributors

**Barnes Crossing Project**

S16, 17, 21, 28, 29, & 32, T8S, R6E and S5, 6, 7 & 8, T9S, R6E  
Lee County, Mississippi

[Site Plan Map](#)

[Map 5 of 16](#)



NAD 1983 StatePlane Mississippi East FIPS 2302 Feet

USDA NAIP 2021 Imagery Basemap

Date Created 12/6/2022      Created by [Redacted]



**Legend**

- GPS Waypoints
- Site Plan: Centerline
- Site Plan: HDD Bore
- Project ROW (7.43 miles/78.65 ac)
- Emergent Wetlands (1.43 ac)
- Forested Wetlands (2.88 ac)
- Ditch (127.77 lf/0.006 ac)
- Erosion (91.97 lf/0.003 ac)
- Ephemeral Feature (2,174.53 lf/0.364 ac)
- Intermittent Tributary (944.1 lf/0.129 ac)
- Perennial Tributary (1,080.58 lf/0.472 ac)



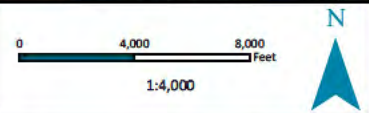
Esri, HERE, Garmin, (c) OpenStreetMap contributors

**Barnes Crossing Project**

S16, 17, 21, 28, 29, & 32, T8S, R6E and S5, 6, 7 & 8, T9S, R6E  
Lee County, Mississippi

Site Plan Map

**Map 6 of 16**



NAD 1983 StatePlane Mississippi East FIPS 2302 Feet

USDA NAIP 2021 Imagery Basemap

Date Created 12/6/2022

Created by [Redacted]



**Legend**

- GPS Waypoints
- Site Plan: Centerline
- Site Plan: HDD Bore
- Project ROW (7.43 miles/78.65 ac)
- Emergent Wetlands (1.43 ac)
- Forested Wetlands (2.88 ac)
- Ditch (127.77 lf/0.006 ac)
- Erosion (91.97 lf/0.003 ac)
- Ephemeral Feature (2,174.53 lf/0.364 ac)
- Intermittent Tributary (944.1 lf/0.129 ac)
- Perennial Tributary (1,080.58 lf/0.472 ac)



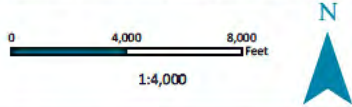
Esri, HERE, Garmin, (c) OpenStreetMap contributors

**Barnes Crossing Project**

S16, 17, 21, 28, 29, & 32, T8S, R6E and S5, 6, 7 & 8, T9S, R6E  
Lee County, Mississippi

[Site Plan Map](#)

**Map 7 of 16**



NAD 1983 StatePlane Mississippi East FIPS 2302 Feet

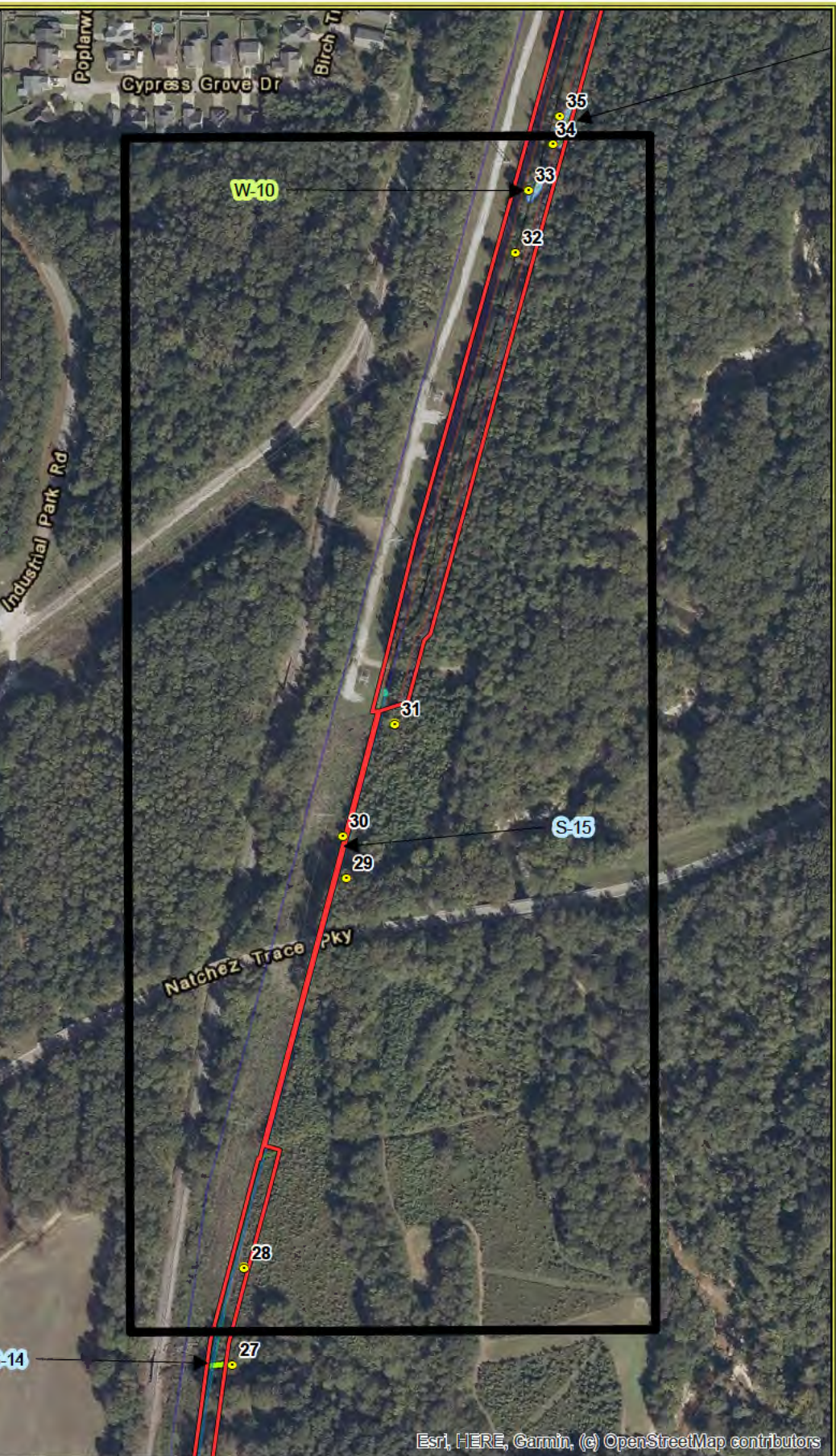
USDA NAIP 2021 Imagery Basemap

Date Created 12/6/2022 Created by [redacted]



**Legend**

- GPS Waypoints
- Site Plan: Centerline
- Site Plan: HDD Bore
- Project ROW (7.43 miles/78.65 ac)
- Emergent Wetlands (1.43 ac)
- Forested Wetlands (2.88 ac)
- Ditch (127.77 lf/0.006 ac)
- Erosion (91.97 lf/0.003 ac)
- Ephemeral Feature (2,174.53 lf/0.364 ac)
- Intermittent Tributary (944.1 lf/0.129 ac)
- Perennial Tributary (1,080.58 lf/0.472 ac)



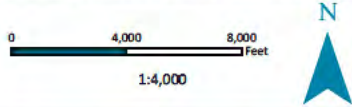
Esri, HERE, Garmin, (c) OpenStreetMap contributors

**Barnes Crossing Project**

S16, 17, 21, 28, 29, & 32, T8S, R6E and S5, 6, 7 & 8, T9S, R6E  
Lee County, Mississippi

[Site Plan Map](#)

[Map 8 of 16](#)



NAD 1983 StatePlane Mississippi East FIPS 2302 Feet

USDA NAIP 2021 Imagery Basemap

Date Created 12/6/2022	Created by [Redacted]
------------------------	-----------------------



**Legend**

- GPS Waypoints
- Site Plan: Centerline
- Site Plan: HDD Bore
- Project ROW (7.43 miles/78.65 ac)
- Emergent Wetlands (1.43 ac)
- Forested Wetlands (2.88 ac)
- Ditch (127.77 lf/0.006 ac)
- Erosion (91.97 lf/0.003 ac)
- Ephemeral Feature (2,174.53 lf/0.364 ac)
- Intermittent Tributary (944.1 lf/0.129 ac)
- Perennial Tributary (1,080.58 lf/0.472 ac)

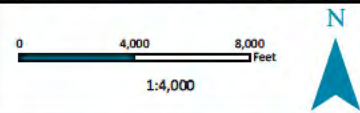


**Barnes Crossing Project**

S16, 17, 21, 28, 29, & 32, T8S, R6E and S5, 6, 7 & 8, T9S, R6E  
Lee County, Mississippi

[Site Plan Map](#)

[Map 9 of 16](#)



NAD 1983 StatePlane Mississippi East FIPS 2302 Feet

USDA NAIP 2021 Imagery Basemap

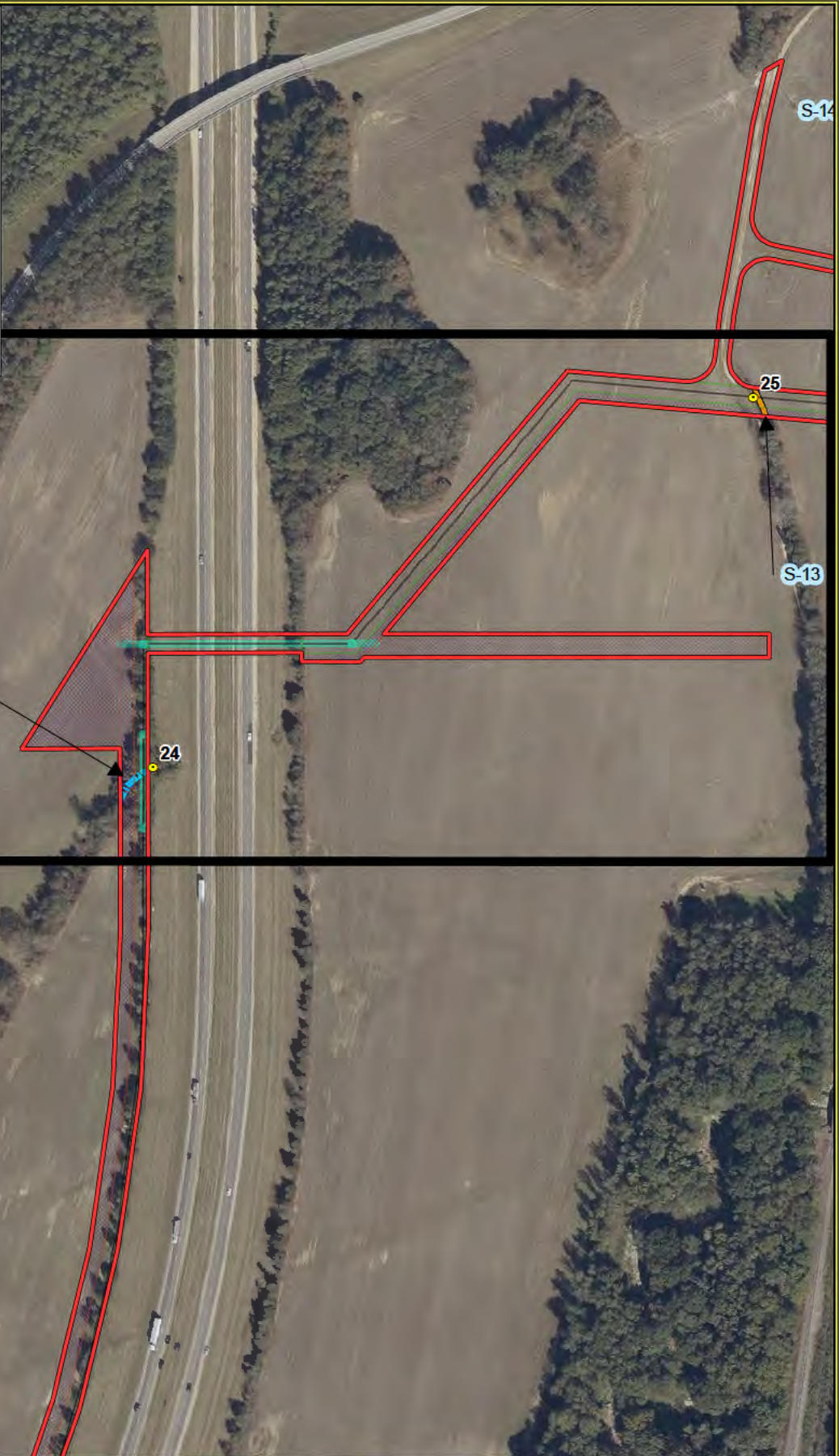
Date Created 12/6/2022

Created by [Redacted]



**Legend**

- GPS Waypoints
- Site Plan: Centerline
- Site Plan: HDD Bore
- Project ROW (7.43 miles/78.65 ac)
- Emergent Wetlands (1.43 ac)
- Forested Wetlands (2.88 ac)
- Ditch (127.77 lf/0.006 ac)
- Erosion (91.97 lf/0.003 ac)
- Ephemeral Feature (2,174.53 lf/0.364 ac)
- Intermittent Tributary (944.1 lf/0.129 ac)
- Perennial Tributary (1,080.58 lf/0.472 ac)

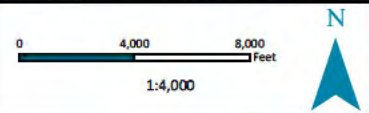


**Barnes Crossing Project**

S16, 17, 21, 28, 29, & 32, T8S, R6E and S5, 6, 7 & 8, T9S, R6E  
Lee County, Mississippi

[Site Plan Map](#)

**Map 10 of 16**



NAD 1983 StatePlane Mississippi East FIPS 2302 Feet

USDA NAIP 2021 Imagery Basemap

Date Created 12/6/2022

Created by [Redacted]



**Legend**

- GPS Waypoints
- Site Plan: Centerline
- Site Plan: HDD Bore
- Project ROW (7.43 miles/78.65 ac)
- Emergent Wetlands (1.43 ac)
- Forested Wetlands (2.88 ac)
- Ditch (127.77 lf/0.006 ac)
- Erosion (91.97 lf/0.003 ac)
- Ephemeral Feature (2,174.53 lf/0.364 ac)
- Intermittent Tributary (944.1 lf/0.129 ac)
- Perennial Tributary (1,080.58 lf/0.472 ac)

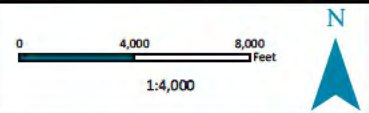


**Barnes Crossing Project**

S16, 17, 21, 28, 29, & 32, T8S, R6E and S5, 6, 7 & 8, T9S, R6E  
Lee County, Mississippi

[Site Plan Map](#)

**Map 11 of 16**



NAD 1983 StatePlane Mississippi East FIPS 2302 Feet

USDA NAIP 2021 Imagery Basemap

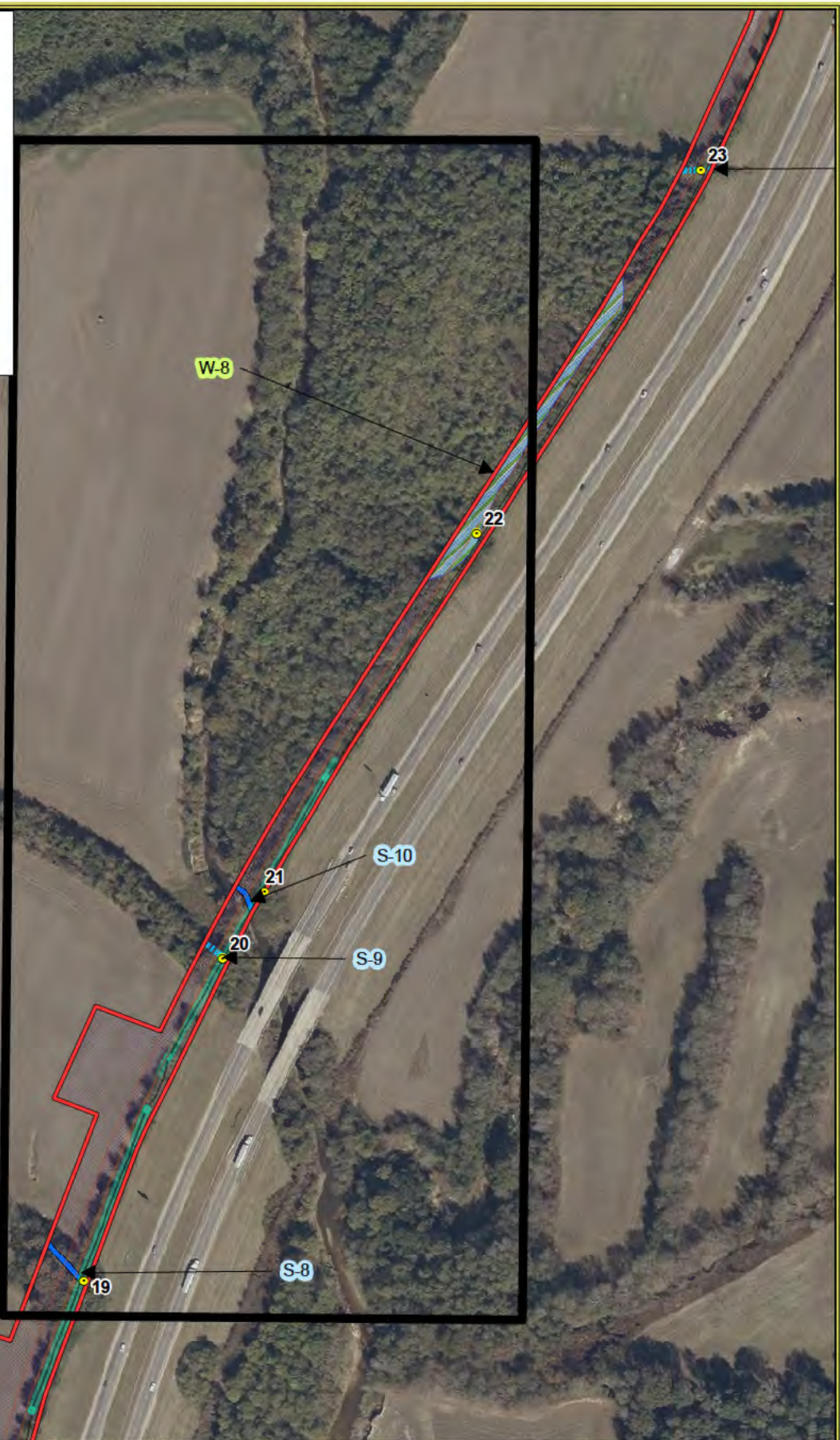
Date Created 12/6/2022

Created by [Redacted]



**Legend**

- GPS Waypoints
- Site Plan: Centerline
- Site Plan: HDD Bore
- Project ROW (7.43 miles/78.65 ac)
- Emergent Wetlands (1.43 ac)
- Forested Wetlands (2.88 ac)
- Ditch (127.77 lf/0.006 ac)
- Erosion (91.97 lf/0.003 ac)
- Ephemeral Feature (2,174.53 lf/0.364 ac)
- Intermittent Tributary (944.1 lf/0.129 ac)
- Perennial Tributary (1,080.58 lf/0.472 ac)

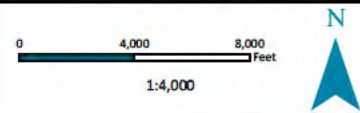


**Barnes Crossing Project**

S16, 17, 21, 28, 29, & 32, T8S, R6E and S5, 6, 7 & 8, T9S, R6E  
Lee County, Mississippi

Site Plan Map

**Map 12 of 16**



NAD 1983 StatePlane Mississippi East FIPS 2302 Feet

USDA NAIP 2021 Imagery Basemap

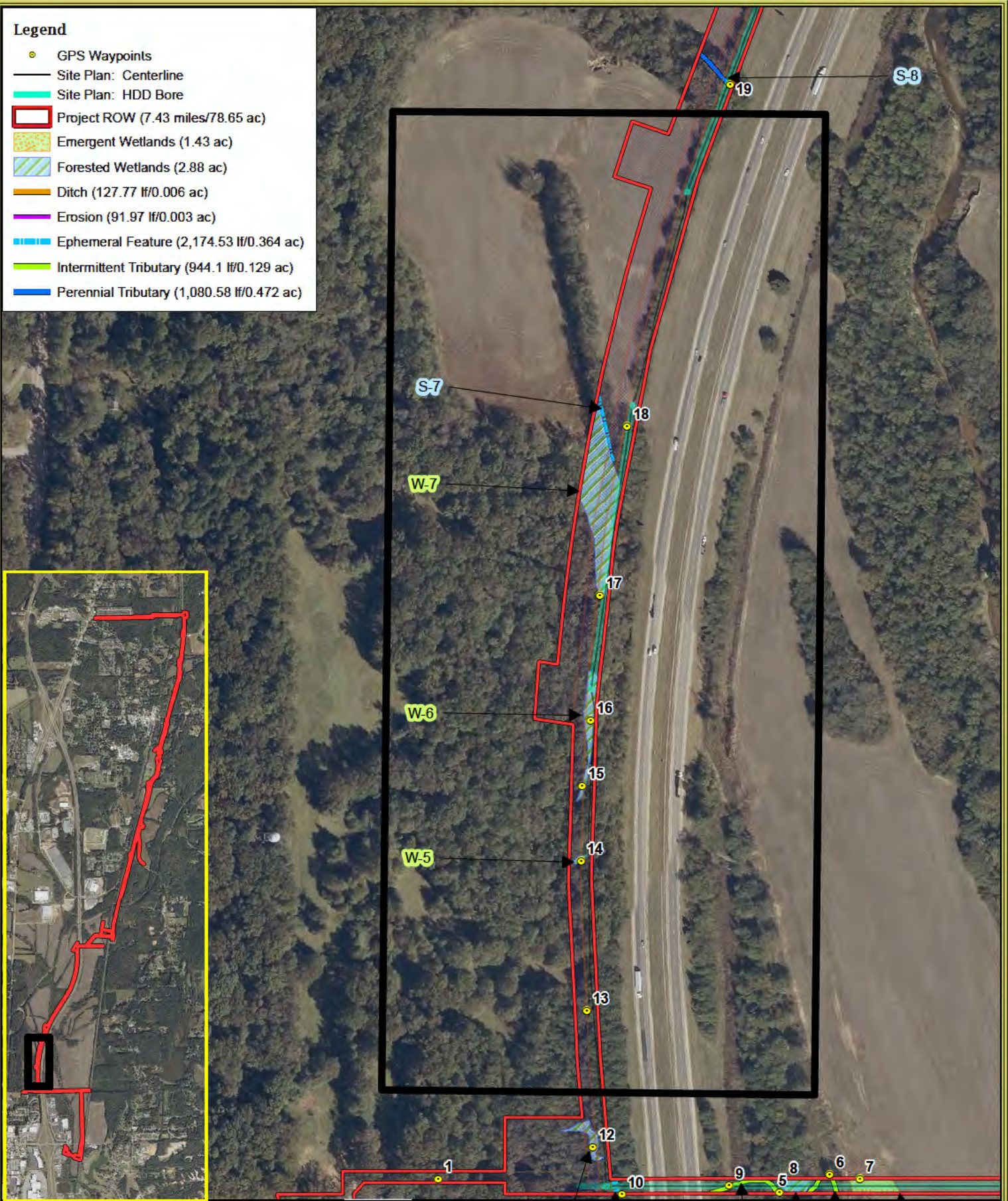
Date Created 12/6/2022

Created by [Redacted]



**Legend**

- GPS Waypoints
- Site Plan: Centerline
- Site Plan: HDD Bore
- Project ROW (7.43 miles/78.65 ac)
- Emergent Wetlands (1.43 ac)
- Forested Wetlands (2.88 ac)
- Ditch (127.77 lf/0.006 ac)
- Erosion (91.97 lf/0.003 ac)
- Ephemeral Feature (2,174.53 lf/0.364 ac)
- Intermittent Tributary (944.1 lf/0.129 ac)
- Perennial Tributary (1,080.58 lf/0.472 ac)

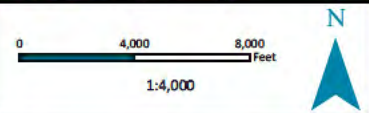


**Barnes Crossing Project**

S16, 17, 21, 28, 29, & 32, T8S, R6E and S5, 6, 7 & 8, T9S, R6E  
Lee County, Mississippi

Site Plan Map

**Map 13 of 16**



NAD 1983 StatePlane Mississippi East FIPS 2302 Feet

USDA NAIP 2021 Imagery Basemap

Date Created 12/6/2022

Created by [Redacted]



**Legend**

- GPS Waypoints
- Site Plan: Centerline
- Site Plan: HDD Bore
- Project ROW (7.43 miles/78.65 ac)
- Emergent Wetlands (1.43 ac)
- Forested Wetlands (2.88 ac)
- Ditch (127.77 lf/0.006 ac)
- Erosion (91.97 lf/0.003 ac)
- Ephemeral Feature (2,174.53 lf/0.364 ac)
- Intermittent Tributary (944.1 lf/0.129 ac)
- Perennial Tributary (1,080.58 lf/0.472 ac)

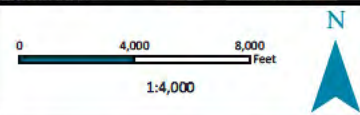


**Barnes Crossing Project**

S16, 17, 21, 28, 29, & 32, T8S, R6E and S5, 6, 7 & 8, T9S, R6E  
Lee County, Mississippi

Site Plan Map

**Map 14 of 16**



NAD 1983 StatePlane Mississippi East FIPS 2302 Feet

USDA NAIP 2021 Imagery Basemap

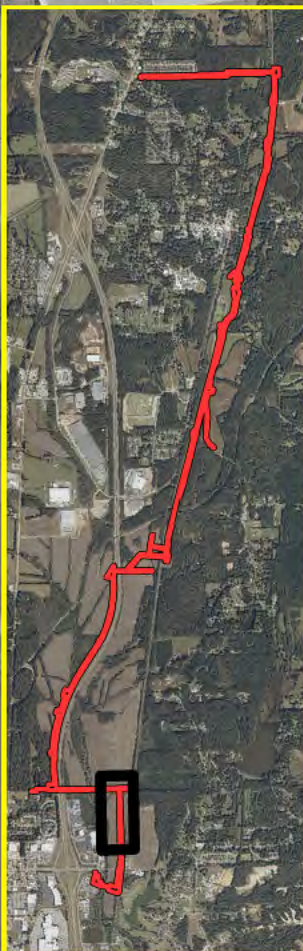
Date Created 12/6/2022

Created by [Redacted]



**Legend**

- GPS Waypoints
- Site Plan: Centerline
- Site Plan: HDD Bore
- Project ROW (7.43 miles/78.65 ac)
- Emergent Wetlands (1.43 ac)
- Forested Wetlands (2.88 ac)
- Ditch (127.77 lf/0.006 ac)
- Erosion (91.97 lf/0.003 ac)
- Ephemeral Feature (2,174.53 lf/0.364 ac)
- Intermittent Tributary (944.1 lf/0.129 ac)
- Perennial Tributary (1,080.58 lf/0.472 ac)

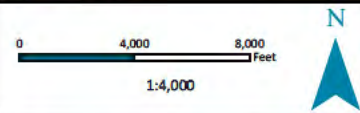


**Barnes Crossing Project**

S16, 17, 21, 28, 29, & 32, T8S, R6E and S5, 6, 7 & 8, T9S, R6E  
Lee County, Mississippi

[Site Plan Map](#)

**Map 15 of 16**



NAD 1983 StatePlane Mississippi East FIPS 2302 Feet

USDA NAIP 2021 Imagery Basemap

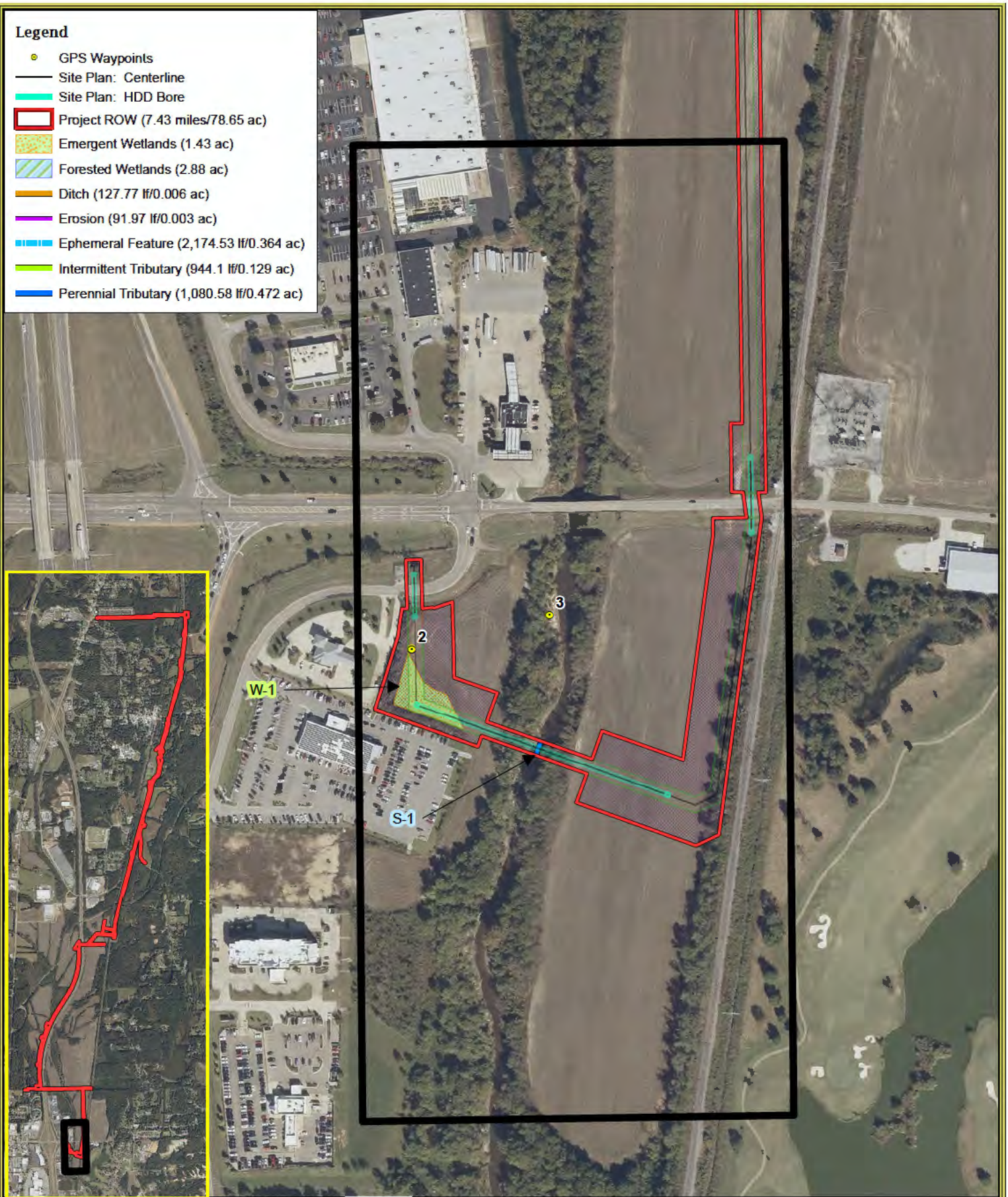
Date Created 12/6/2022

Created by [Redacted]



**Legend**

- GPS Waypoints
- Site Plan: Centerline
- Site Plan: HDD Bore
- Project ROW (7.43 miles/78.65 ac)
- Emergent Wetlands (1.43 ac)
- Forested Wetlands (2.88 ac)
- Ditch (127.77 lf/0.006 ac)
- Erosion (91.97 lf/0.003 ac)
- Ephemeral Feature (2,174.53 lf/0.364 ac)
- Intermittent Tributary (944.1 lf/0.129 ac)
- Perennial Tributary (1,080.58 lf/0.472 ac)

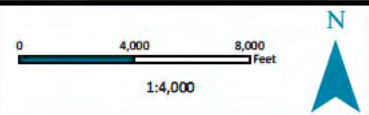


**Barnes Crossing Project**

S16, 17, 21, 28, 29, & 32, T8S, R6E and S5, 6, 7 & 8, T9S, R6E  
Lee County, Mississippi

Site Plan Map

**Map 16 of 16**



NAD 1983 StatePlane Mississippi East FIPS 2302 Feet

USDA NAIP 2021 Imagery Basemap

Date Created 12/6/2022

Created by