

OKATIBBEE LAKE



US Army Corps
of Engineers®
Mobile District

RECREATIONAL FACILITIES

SITE	Restroom	Picnic Table	Swimming Area	Boat Ramp	Pets Allowed	Playground	Primitive Sites	Dump Station	Shower	Laundry	Cabin Rental	Disc Golf Course	Fishing Jetty	Group Camping	Grills	Handicapped Access	Hiking Trail	Alcohol Allowed	Hookups	Water
1 Pelican's Cove Marina (601) 626-8080	•	•	•	•	•	•	•	•	•	•	•	•	•	•	•	•	•	•	•	•
2 West Bank Park	•	•	•	•	•	•	•	•	•	•	•	•	•	•	•	•	•	•	•	•
3 Twitley Branch Campground (601) 626-8068	•	•	•	•	•	•	•	•	•	•	•	•	•	•	•	•	•	•	•	•
4 Collinsville Park	•	•	•	•	•	•	•	•	•	•	•	•	•	•	•	•	•	•	•	•
5 Gin Creek Park	•	•	•	•	•	•	•	•	•	•	•	•	•	•	•	•	•	•	•	•
6 Okatibbee Water Park (601) 737-2370	•	•	•	•	•	•	•	•	•	•	•	•	•	•	•	•	•	•	•	•
7 Pine Springs Park	•	•	•	•	•	•	•	•	•	•	•	•	•	•	•	•	•	•	•	•
8 East Bank Park	•	•	•	•	•	•	•	•	•	•	•	•	•	•	•	•	•	•	•	•
9 Game Management Area (601) 737-5831	•	•	•	•	•	•	•	•	•	•	•	•	•	•	•	•	•	•	•	•
10 Tailrace Area	•	•	•	•	•	•	•	•	•	•	•	•	•	•	•	•	•	•	•	•

LAKE & DAM STATISTICS

(All elevations are in feet above mean sea level)

Drainage Area Above Dam154mi²
Average Stream Flow203ft³/sec
Length of Shoreline at Elevation 34330mi.
Depth of Water at Dam at Elevation 34335ft.

RESERVOIR

Area at Elevation 3526,580 acres
Maximum Flood Control Pool
Area at Elevation 3444,000 acres
Summer Operating Pool
Area at Elevation 3392,720 acres
Winter Operating Pool
Area at Elevation 3281,280 acres
Minimum Operating Pool

DAM (compacted earth fill)

Top Width18ft.
Maximum Bottom Width324ft.
Length6,500ft.
Maximum Height above Creek Bed61ft.

EMERGENCY SPILLWAY (free overflow, unpaved)

Length of Crest1,500ft.
Width of Crest20ft.

POINTS OF INTEREST

Location	Distance from Okatibbee Lake
Art Museum	10 miles
State Fish Hatchery	15 miles
Little Theater	20 miles
Merrehope	15 miles
Jimmy Rodgers Memorial	10 miles
Neshoba Fair (July or August)	35 miles
Sam Dale Monument	25 miles
Choctaw Indian Fair (July)	30 miles
Clarkco State Park	25 miles

LEGEND

Public Boat Launching Ramp	
Okatibbee Water Park	
Approx. Summer Operating Pool	
Approx. Winter Operating Pool	
Maximum Flood Reduction Pool	
State Highway	
Paved Road	



WHEN WADING,
SWIMMING, OR
BOATING, WEAR
A COAST GUARD
APPROVED LIFE
PRESERVER!



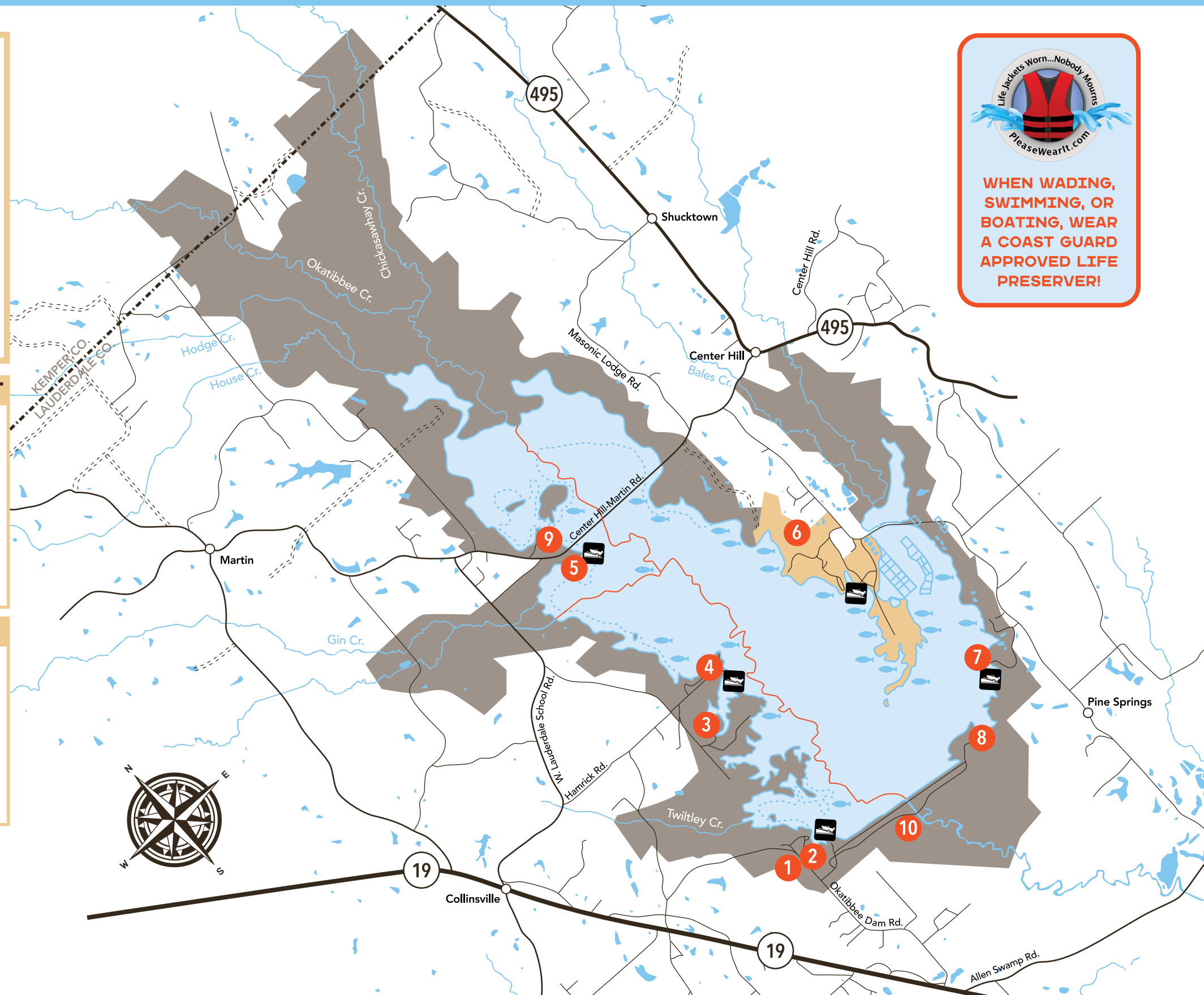
DANGER

SAFETY NOTICE

Turbulent waters are present in areas immediately above and below all locks and dams. Extreme caution must be exercised. There must be strict compliance with all posted signs and other safety rules.

UNDERWATER HAZARDS

There are submerged stumps, logs, fences, and rocks in the lake. Be especially watchful for obstructions near the surface from November to February, when the lake is usually at its lowest level.



Okatibbee Lake lies on Okatibbee Creek, in Lauderdale County, about 32 miles above its confluence with the Chunky River. The project is located seven miles northwest of Meridian and is an important feature in the development of the Pascagoula River Basin. The \$8.5M project was authorized by Congress in 1962 and substantially completed in 1968.

Okatibbee is the first major project to be completed in the comprehensive development of the Pascagoula River Basin. It is primarily a flood reduction project which reduces flood damage on 26,000 acres of residential, industrial and agricultural lands along Okatibbee Creek and the upper Chickasawhay River at Meridian and Stonewall.

The pool level of the lake is lowered during the fall to provide more storage for anticipating winter and spring floods. Flood waters are stored after heavy rains and released at a controlled rate after local downstream runoff has subsided.

Water stored in the lake is released to supplement flow downstream during dry periods. This maintains water quality and provides a better balance of ecological conditions.

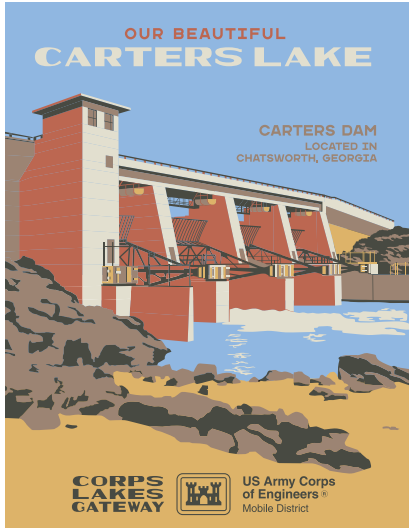
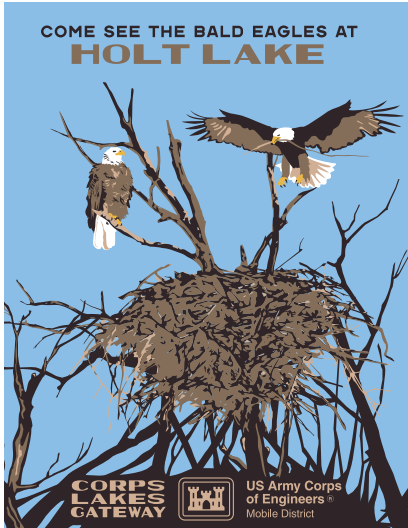
Water from the lake may be used as a source of water to meet the growing municipal and industrial needs of the State of Mississippi. As much as 25 million gallons of water per day can be utilized for this purpose.

Important Numbers

Mississippi Wildlife, Fisheries and Parks Office..... (601) 737-5831

Lauderdale County Sheriff's Office (601) 486-4952

VISIT OUR OTHER SITES!



www.Recreation.gov

BUILDING STRONG®

For Further Information Contact:

U.S. Army Corps of Engineers

Okatibbee Lake

Resource Management Office

8490 Okatibbee Dam Road

Collinsville, MS 39325

Park Information: (601) 626-8431

Daily Lake Level Information: (601) 626-8431

Scan to visit
our website



COME FISHING ON BEAUTIFUL OKATIBBEE LAKE



**CORPS
LAKES
GATEWAY**



**US Army Corps
of Engineers®**
Mobile District