

CARTERS LAKE



US Army Corps of Engineers®
Mobile District

RECREATIONAL FACILITIES

RECREATION AREA

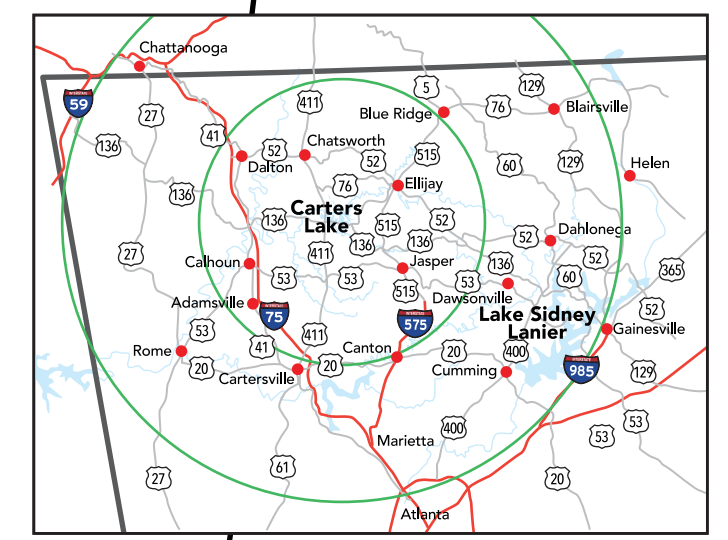
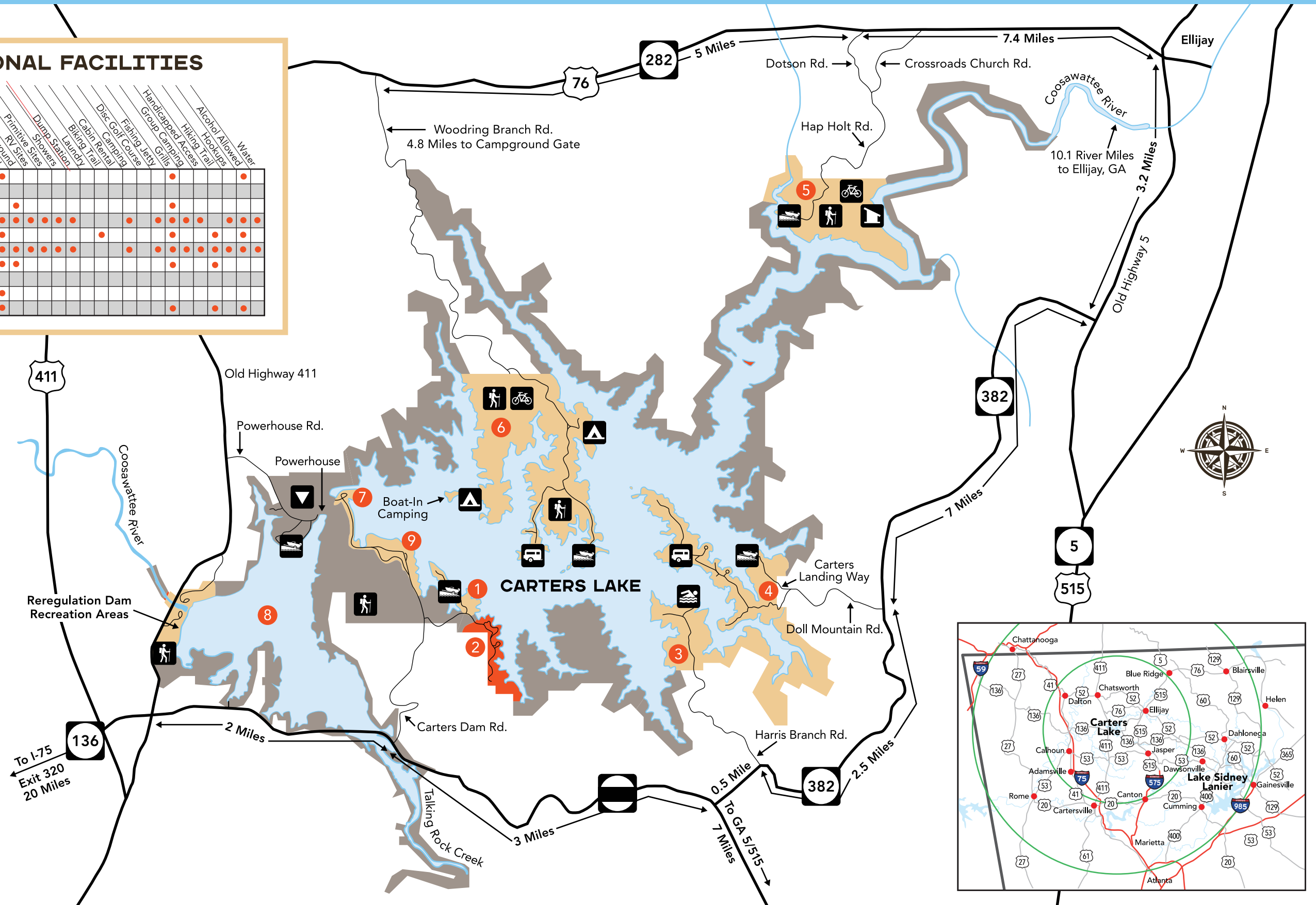
RECREATION AREA	Picnic Shelter	Picnic Table	Restroom	Swimming Area	Boat Ramp	Pets Allowed	Use Fee	Playground	RV Sites	Primitive Sites	Dump Station	Showers	Launch	Biking Trail	Cabin Rental	Disc Golf Course	Fishing Jetty	Group Camping	Grills	Handicapped Access	Hiking Trail	Hookups	Alcohol Allowed	Water	
1 Dam Site Recreation Area																									
2 Carters Lake Marina																									
3 Harris Branch Recreation Area																									
4 Doll Mountain Recreation Area																									
5 Ridgeway Recreation Area																									
6 Woodring Branch Recreation Area																									
7 Northbank Recreation Area																									
8 Reregulation Pool																									
9 Nature Center																									
10 Reregulation Dam Recreation Areas																									

LEGEND

- Roads.....
- Public Use Areas
- Marina
- Protected Non-Park Area.....
- Boat Ramp
- Hiking Trail
- Bike Trail
- North Georgia Water Trail (The Headwaters)
Carters Lake Paddle-In Campsite
- Primitive Camping
- Developed Camping
- Archery Range

Camping in designated areas only. No island or shoreline camping allowed.

Boat-In Camping is a designated camping area. Located on peninsula within Woodring Branch Recreation Area as denoted on map.



Carters Lake is one of the most scenic lakes in the southeast. Located at the southern end of the Blue Ridge Mountains, its sparkling waters and rugged shoreline provide a beautiful surrounding for a variety of recreational opportunities including camping, picnicking, boating, fishing, and hunting.

The lake is named after 19th century Georgia politician Farrish Carter Tate and is the deepest of Georgia's reservoir lakes. It has a surface area of 3,200 acres and has 62 miles of shoreline. The average depth of the lake is 200 feet with some parts reaching more than 450 feet.

The lake is fed by the Coosawattee River that runs between Ellijay and Chatsworth. Carters Dam, the tallest earthen dam east of the Mississippi, was completed in 1977. Since then, it has been used to act as a watershed to control annual flooding and generate power.



DANGER

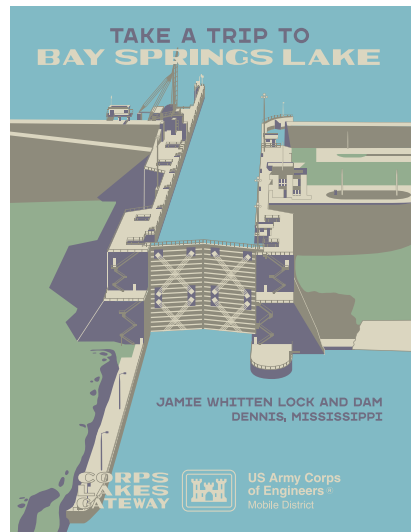
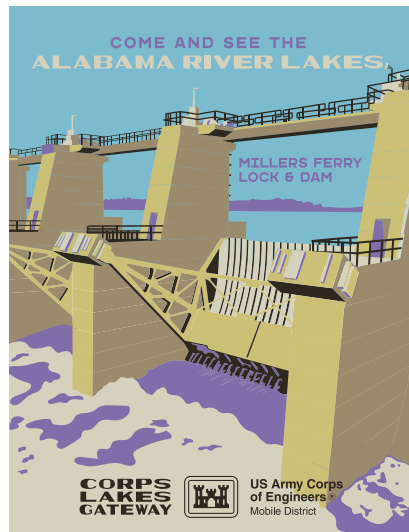
SAFETY NOTICE

Turbulent waters are present in areas immediately above and below all locks and dams. Extreme caution must be exercised. There must be strict compliance with all posted signs and other safety rules.

UNDERWATER HAZARDS

There are submerged stumps, logs, fences, and rocks in the lake. Be especially watchful for obstructions near the surface from November to February, when the lake is usually at its lowest level.

VISIT OUR OTHER SITES!



www.Recreation.gov
BUILDING STRONG®
 For Further Information Contact:
 U.S. Army Corps of Engineers
 Carters Lake
 1850 Carters Dam Road
 Chatsworth, GA 30705
 Telephone: 706-334-2248



Scan to visit our website

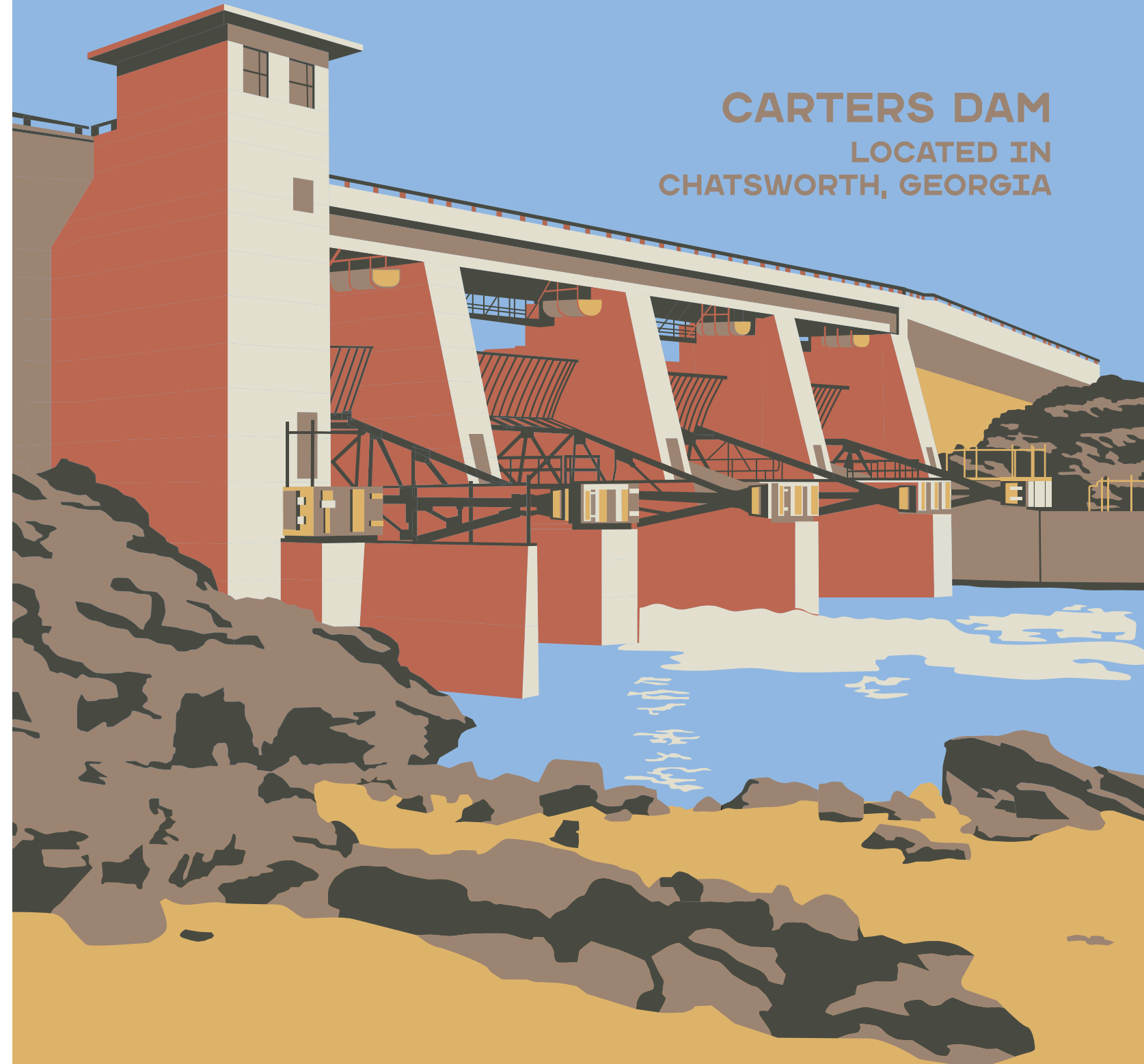


Scan to visit our Facebook page



**OUR BEAUTIFUL
 CARTERS LAKE**

**CARTERS DAM
 LOCATED IN
 CHATSWORTH, GEORGIA**



**CORPS
 LAKES
 GATEWAY**



**US Army Corps
 of Engineers®**
 Mobile District