



**US Army Corps
of Engineers**

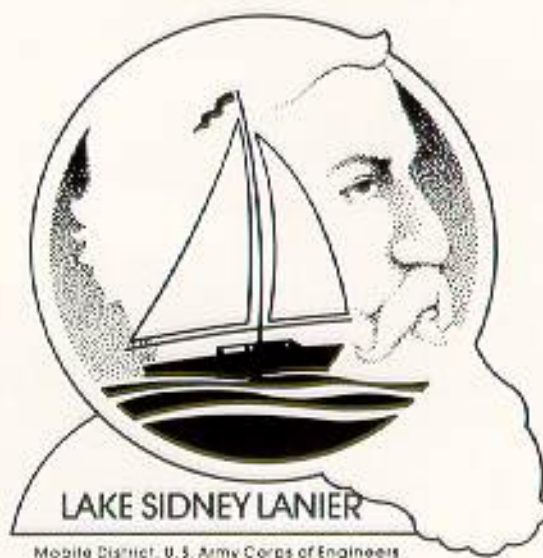
Mobile District

Lake Sidney Lanier Shoreline Use Allocations



The Army Corps of Engineers has been delegated the responsibility of managing, protecting and regulating Lake Sidney Lanier. The Shoreline Management Plan for Lake Sidney Lanier was originally implemented in 1976. After receiving extensive public input during meetings held in 1986 and 1987, the plan was revised and approved in January of 1988. The Shoreline Management Plan provides policy and guidance on management of public property at the lake while promoting a balanced public use of the lakeshore.

This booklet is a part of the Shoreline Management Plan and will provide you with information concerning the shoreline use zoning allocations in effect on public property at Lake Sidney Lanier. It is intended only as a field use guide and should not be used as the sole means of determining precise zoning boundaries. Any persons interested in specific information on the allocation zoning boundaries at Lake Lanier may inquire further at the Resource Manager's Office, P.O. Box 567, Buford, GA 30518 or by calling 404-945-9531.



Zoning Allocations. The Shoreline Management Plan for Lake Sidney Lanier establishes the following shoreline allocations:

a. **Limited Development Areas.** Certain specific private uses of public lands may be permitted along shoreline designated "Limited Development."

The issuance of a Shoreline Use Permit does not preclude the use of the shoreline by the general public. However, personal properties authorized for placement are the permittee's private belongings. Unauthorized intrusion upon private floating facilities or picnic shelters is considered a trespass and could be reported to proper authorities. Pedestrian traffic and general public use of the shoreline cannot be restricted or denied.

Approximately 46 percent of shoreline is classified as "Limited Development". These areas are shown in **green** in this booklet.

b. **Public Recreation Areas.** Although most of the project is considered available for limited recreational purposes, certain specific areas are set aside for intensive recreational development or use. These sites include campgrounds, day-use parks, primitive or natural areas, lands leased to public groups and other local, state or federal agencies for recreational use or development, and marine services. Permits for private shoreline use facilities are not granted in public recreation areas. Commercial activity is prohibited in all of these areas without a permit.

Approximately 29 percent of the shoreline is classified as "Public Recreation". These areas are shown in **red** in this booklet.

c. **Protected Shoreline Areas.** Areas are designated "protected" to preserve the scenic appeal of a lake that is rapidly becoming urban; to avoid conflict between private and public uses; to protect specific habitat for fish and wildlife; to protect cultural, historical, and archaeological sites; to protect endangered species; to protect navigation channels; to restrict placement of floating facilities in areas too shallow for navigation or too exposed to winds and currents; and to protect important natural formations and vistas, etc.

Pedestrian and boating access are permitted along protected shoreline provided that aesthetic, environmental, historical, or natural resource values are not damaged; however, private recreational facilities may not be authorized at these locations.

Approximately 25 percent of the shoreline and islands are allocated in the "Protected" classification. These areas are shown in **yellow** in this booklet.

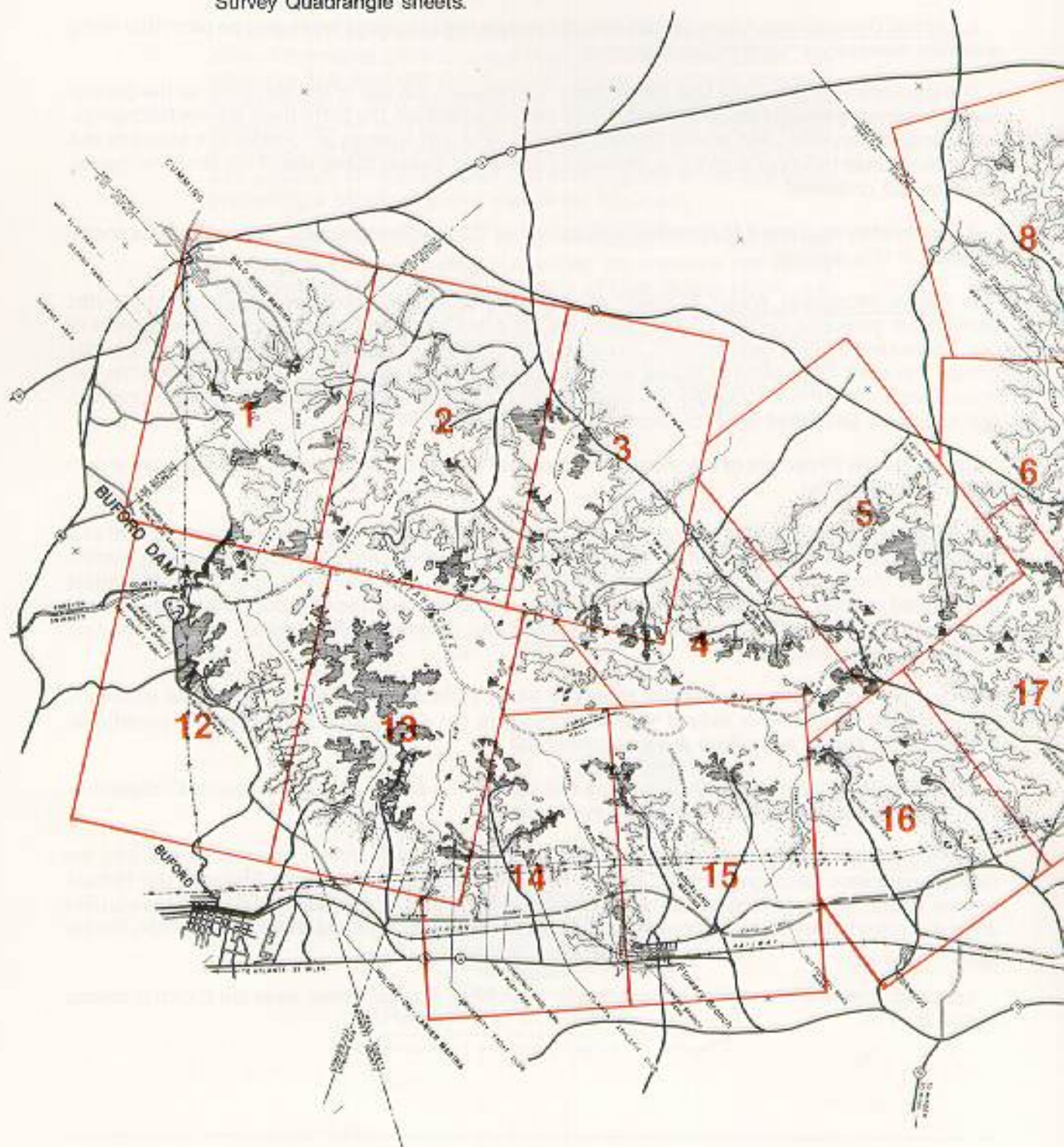
d. **Prohibited Access Areas.** This classification protects certain project operation areas and the recreational visitor. Although restricted visitation is allowed at most of these sites, Shoreline Use Permits are not issued for these locations. The only areas allocated under this classification at Lake Lanier are in the proximity of the powerhouse intakes, dam, saddledikes, spillway, tailrace, and Corps marine yard.

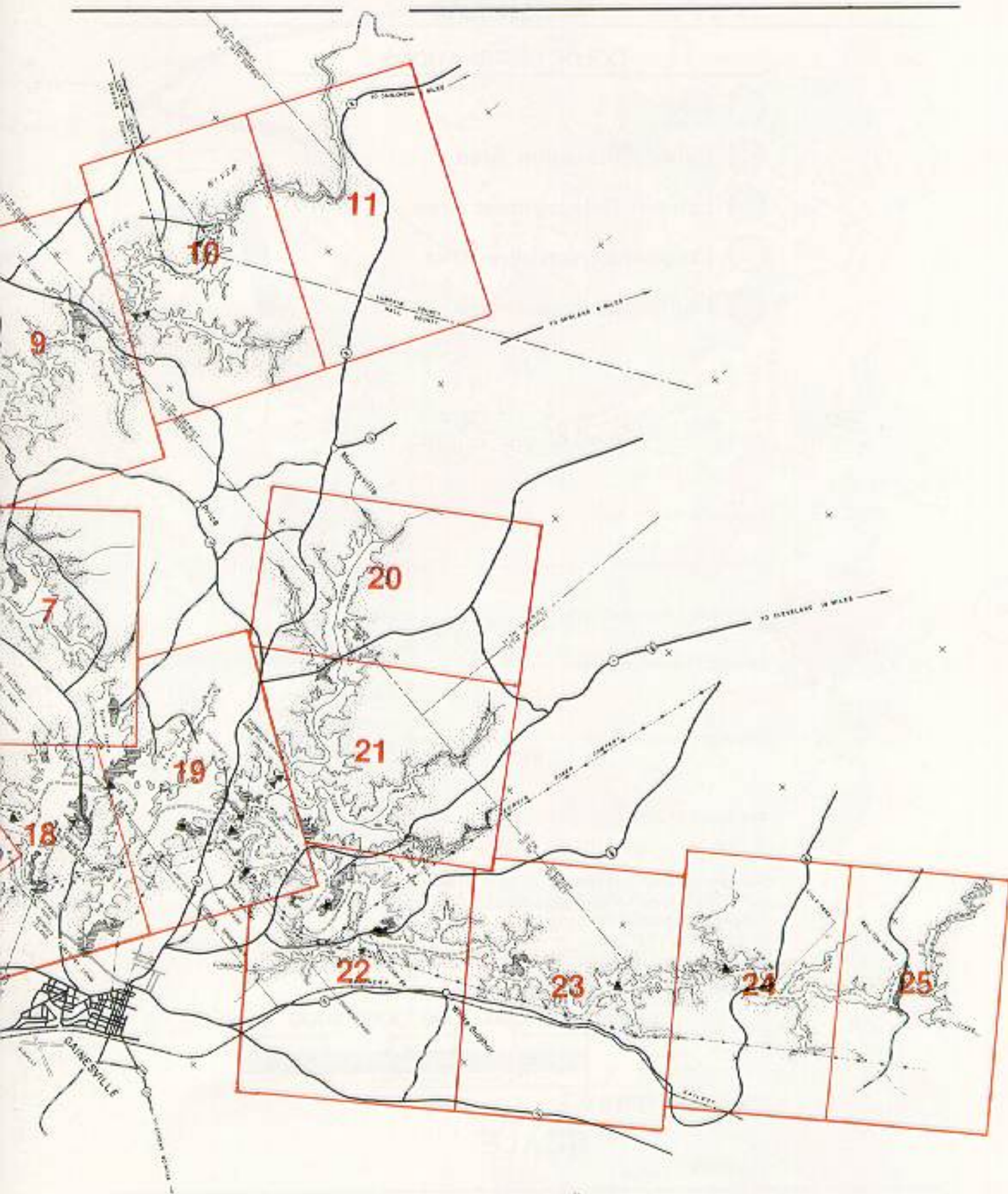
Less than one mile of shoreline is classified as "Prohibited Access". These areas are shown in **orange** in this booklet.

MapKey

The map key represents Lake Lanier broken down into specific sheets which coincide with page numbers in the remainder of this booklet. To locate a specific area, identify the area on the map below and turn to the page indicated.






The base map for this booklet was reproduced from U.S. Geological Survey Quadrangle sheets.

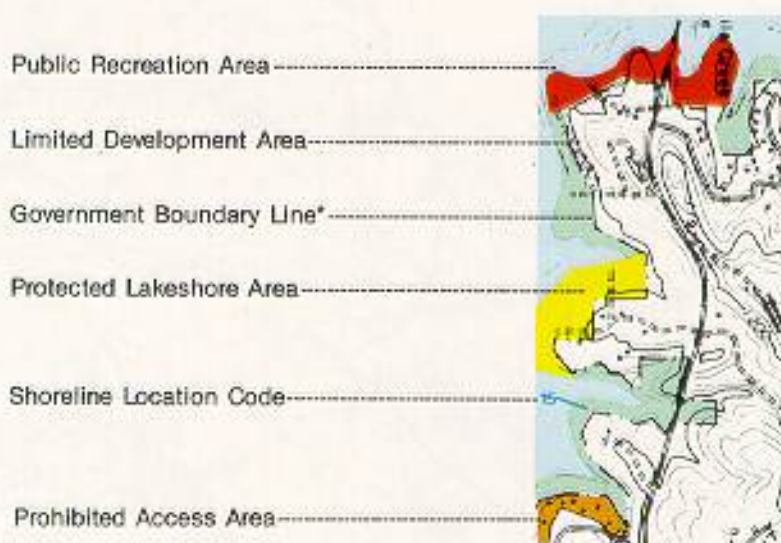




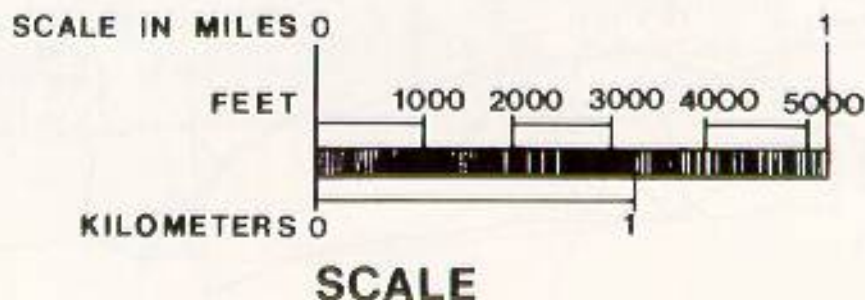
Legend

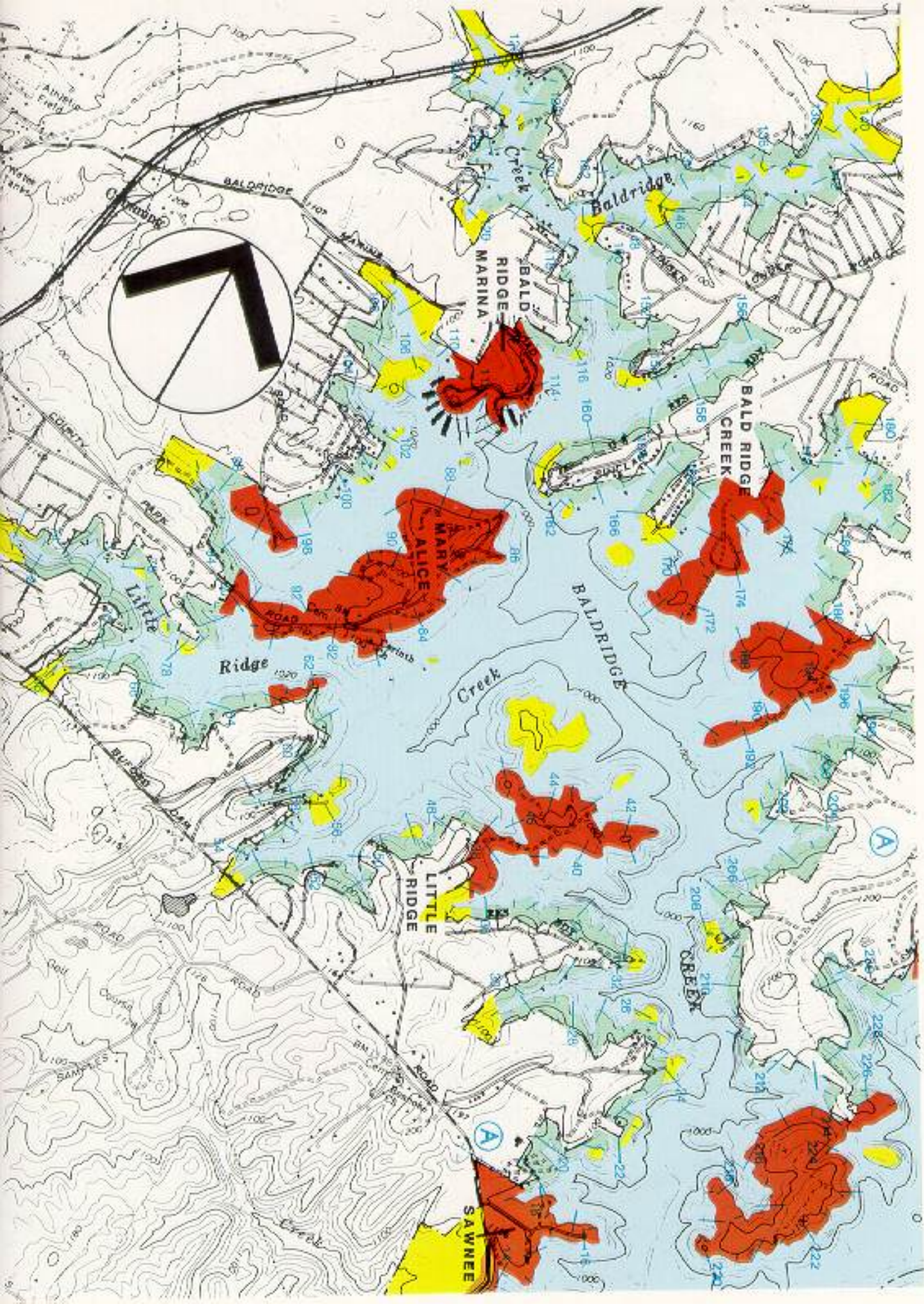
COLOR DESIGNATIONS

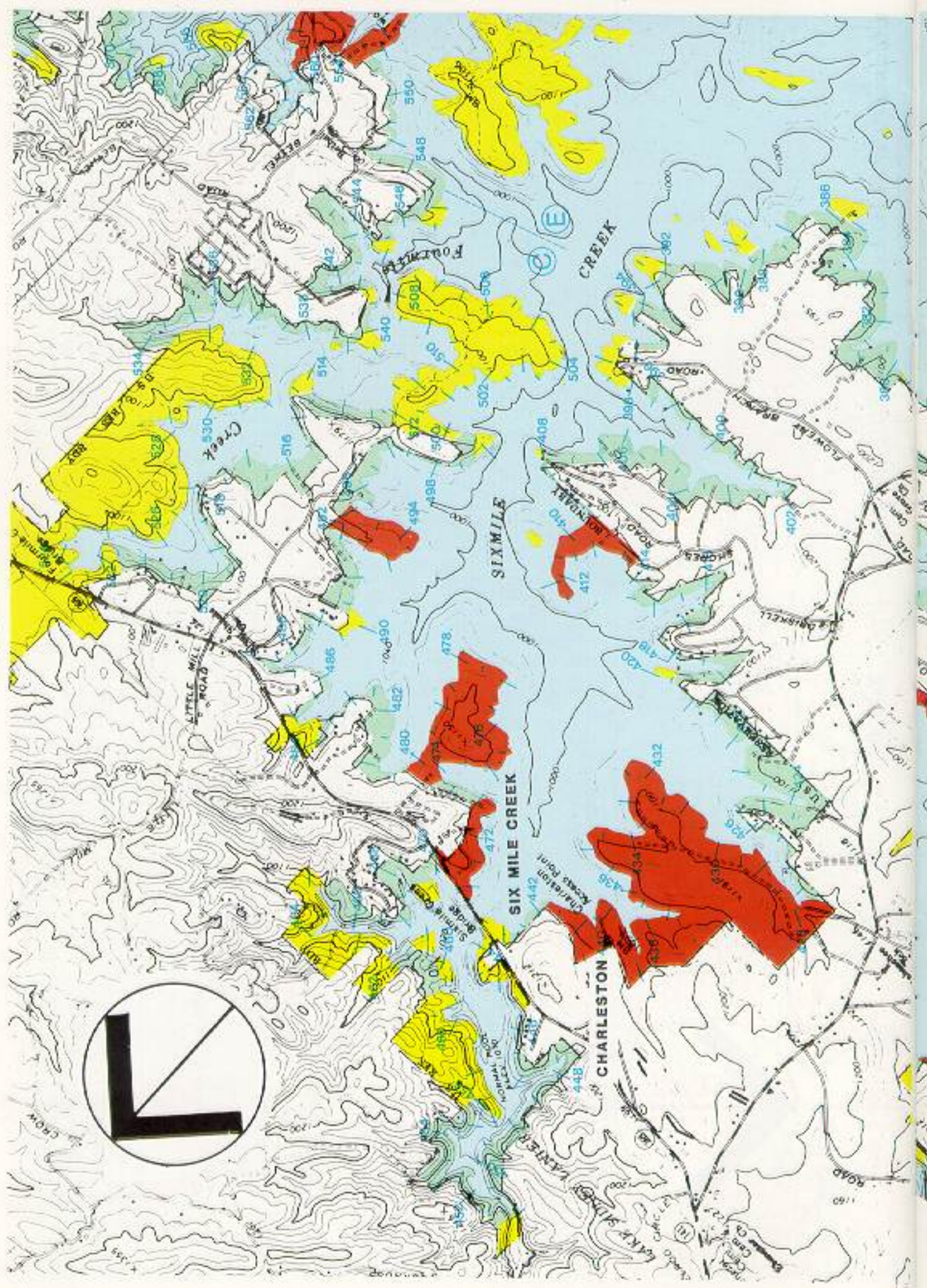
-  Lake
-  Public Recreation Area
-  Limited Development Area
-  Protected Lakeshore Area
-  Prohibited Access Area

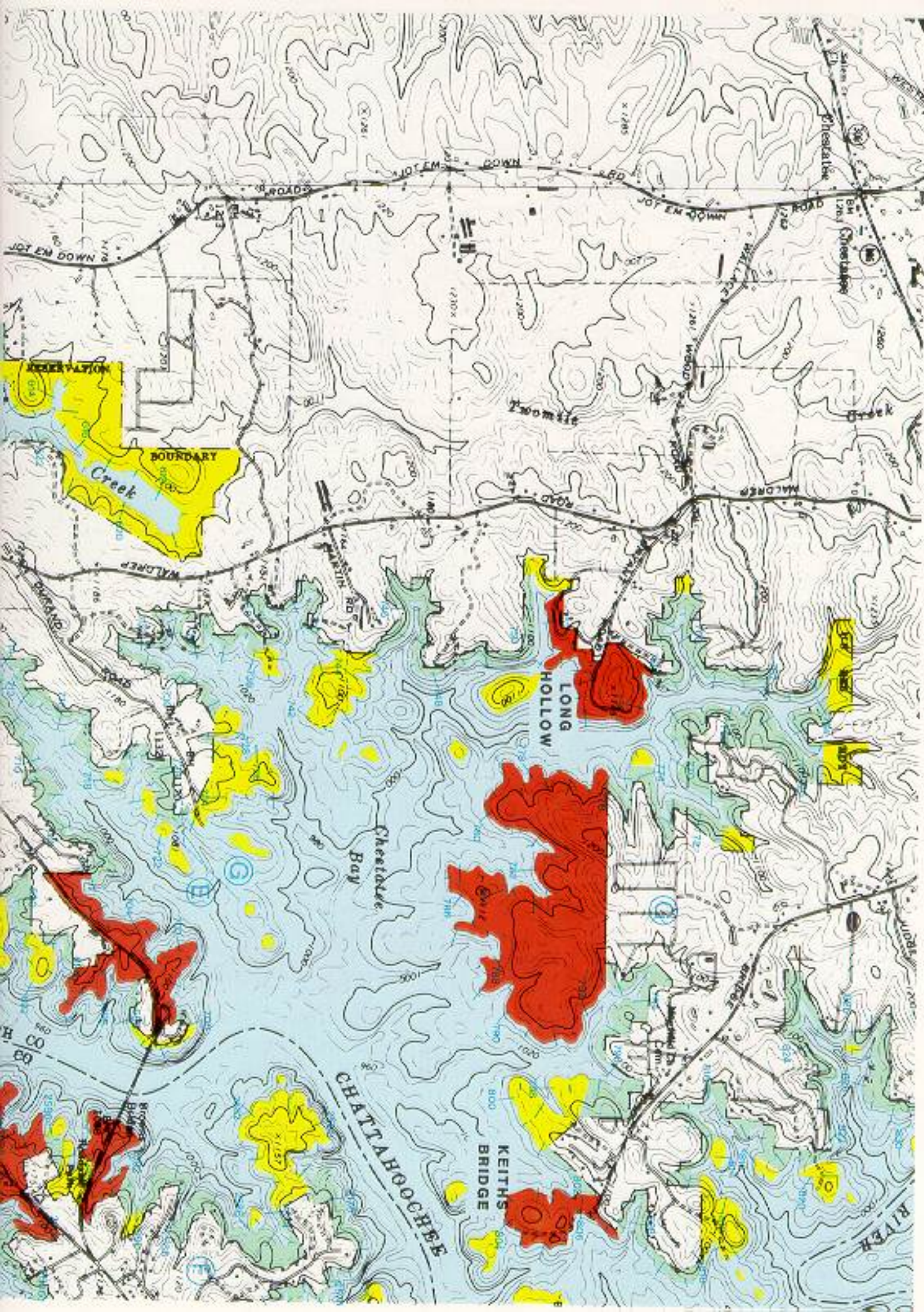


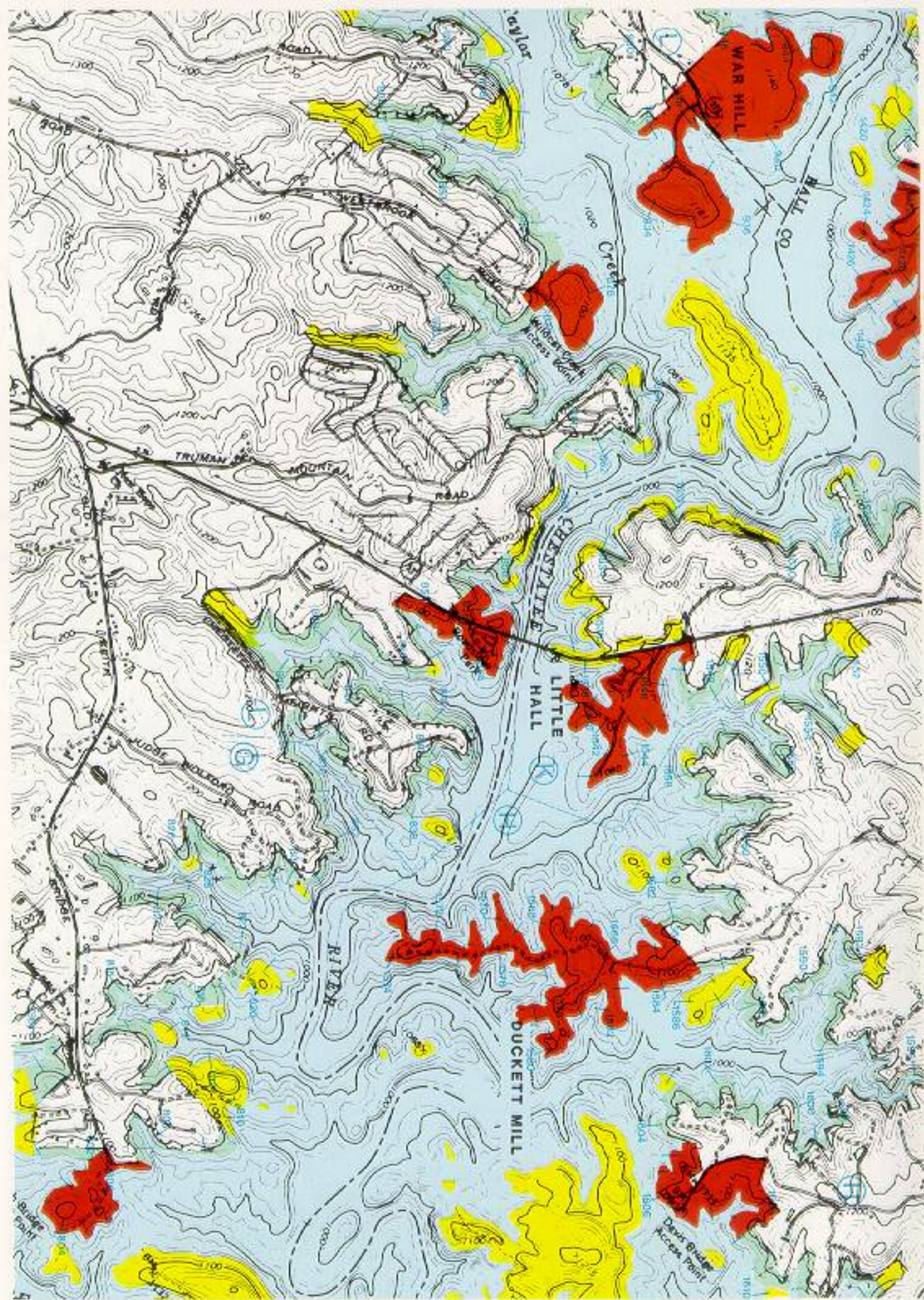
* Government boundary lines depicted in this document are based upon USGS Quad sheets compiled in 1962. Contact the Resource Manager's Office for detailed information.

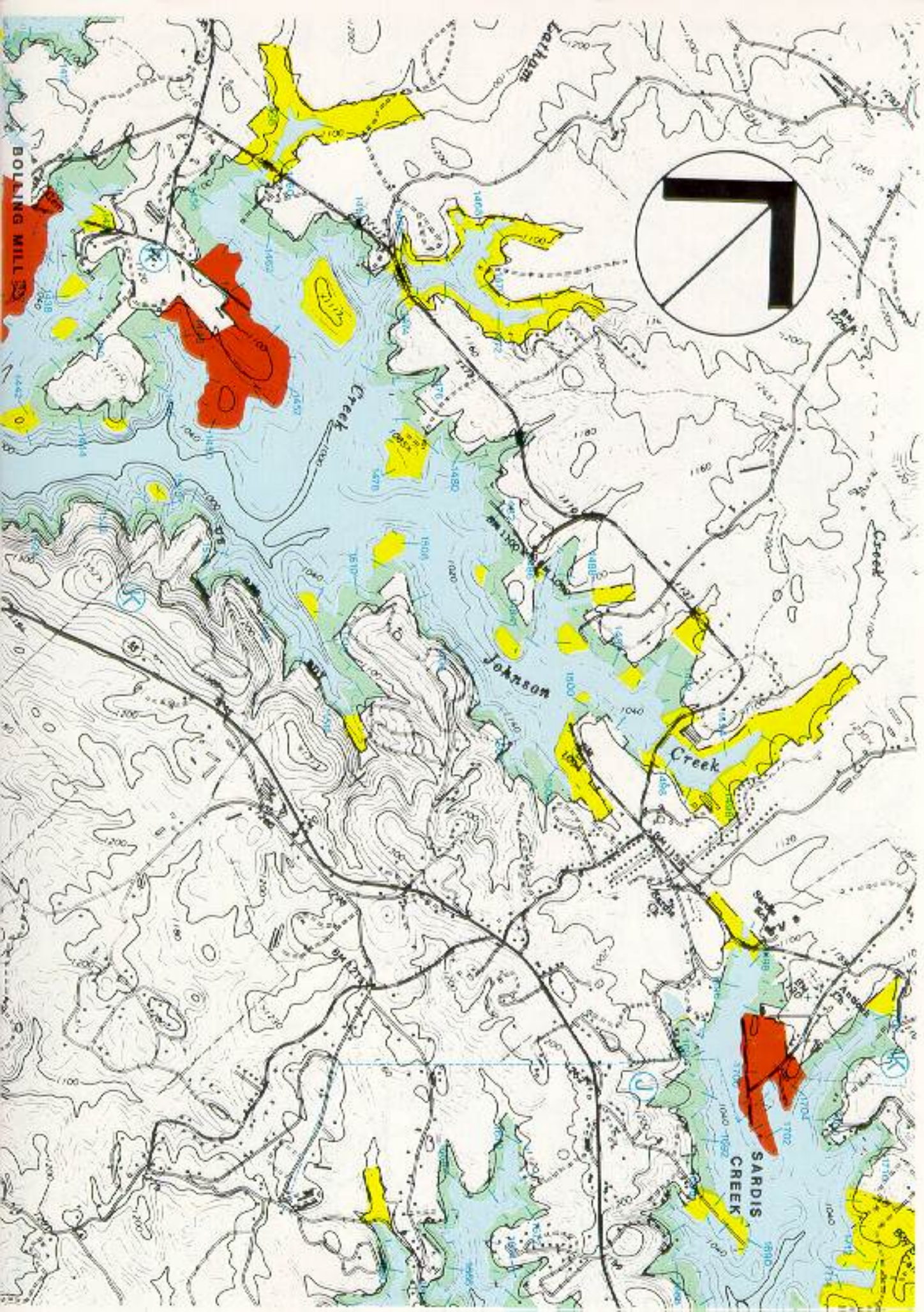


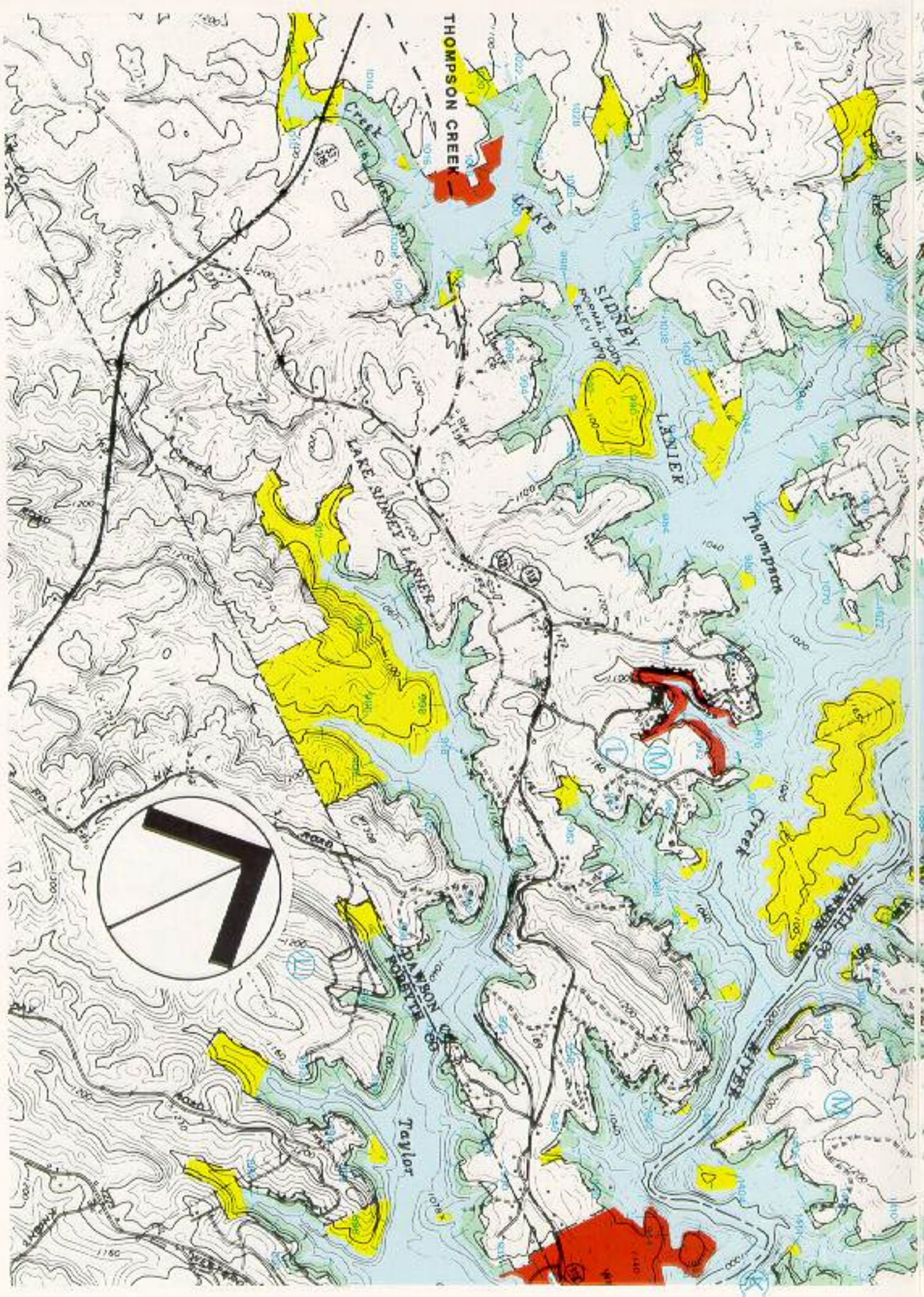


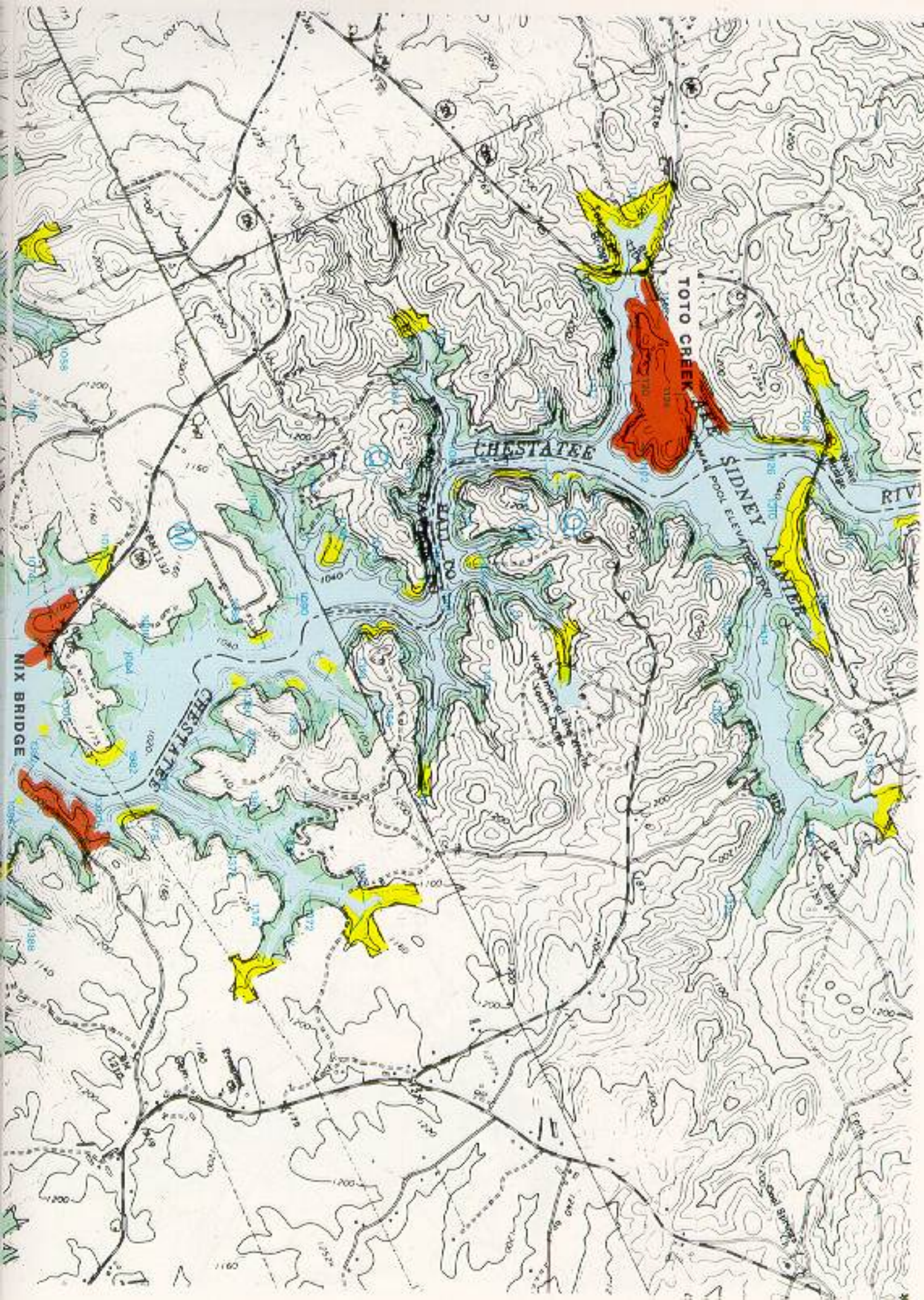


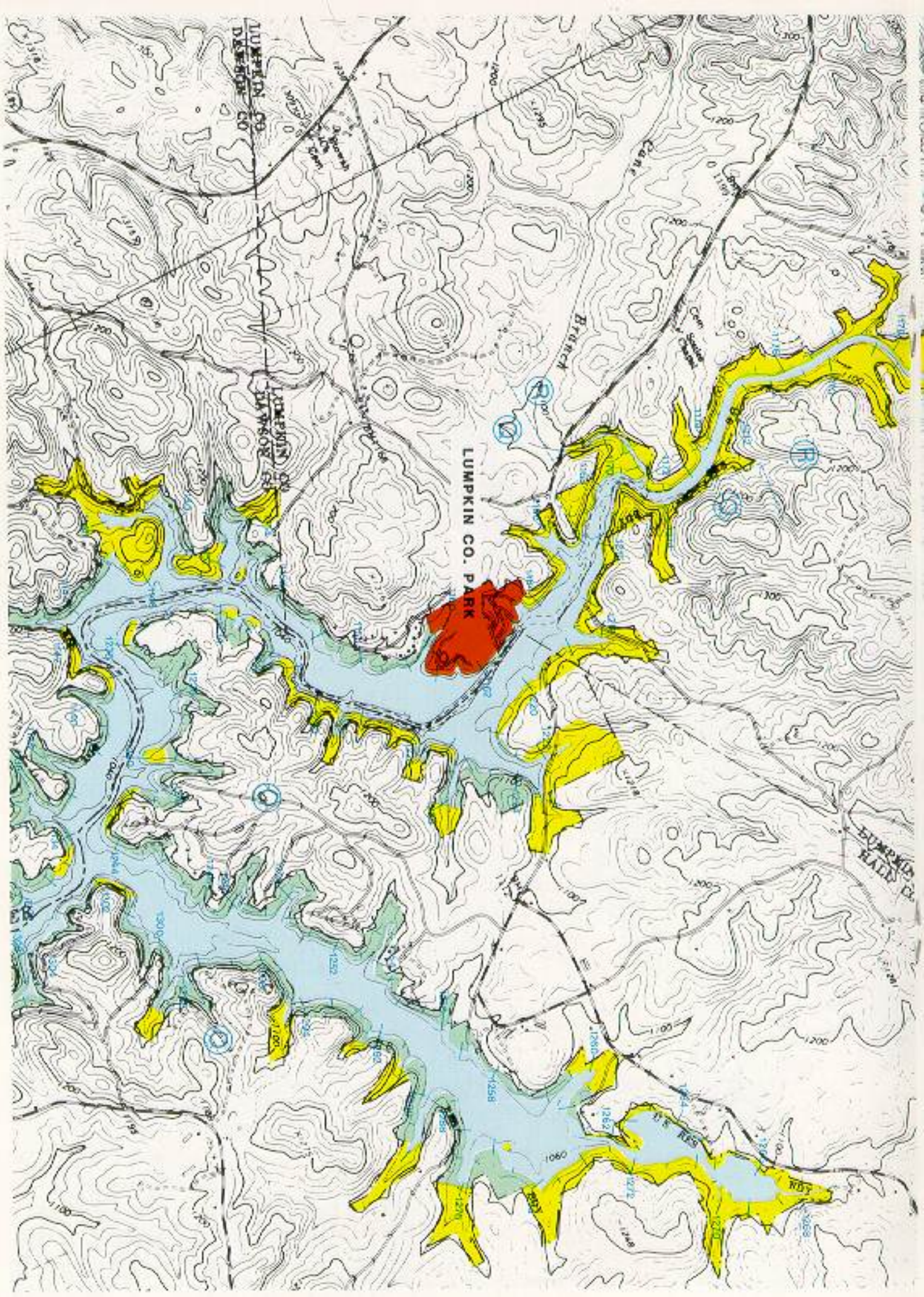


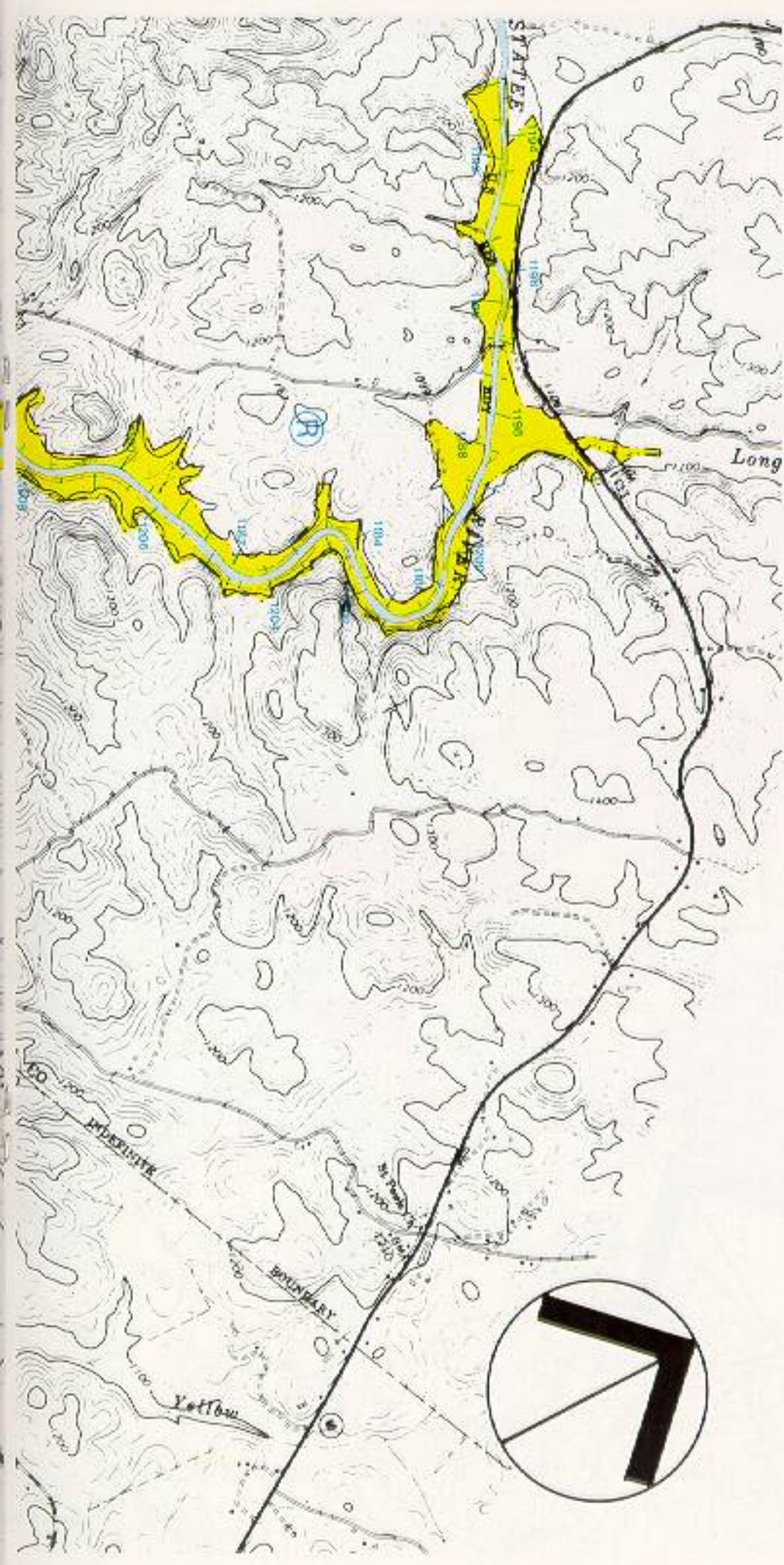


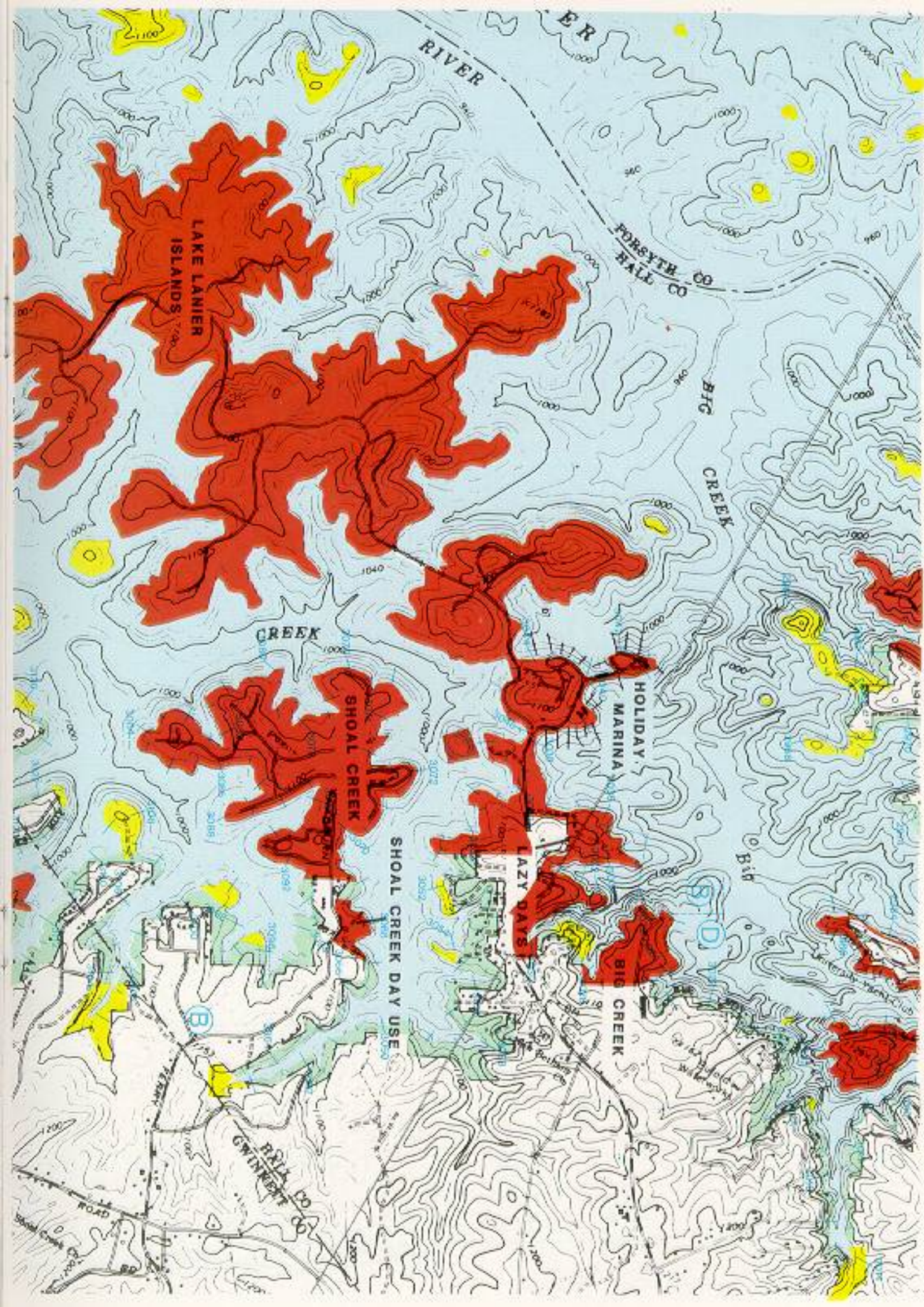


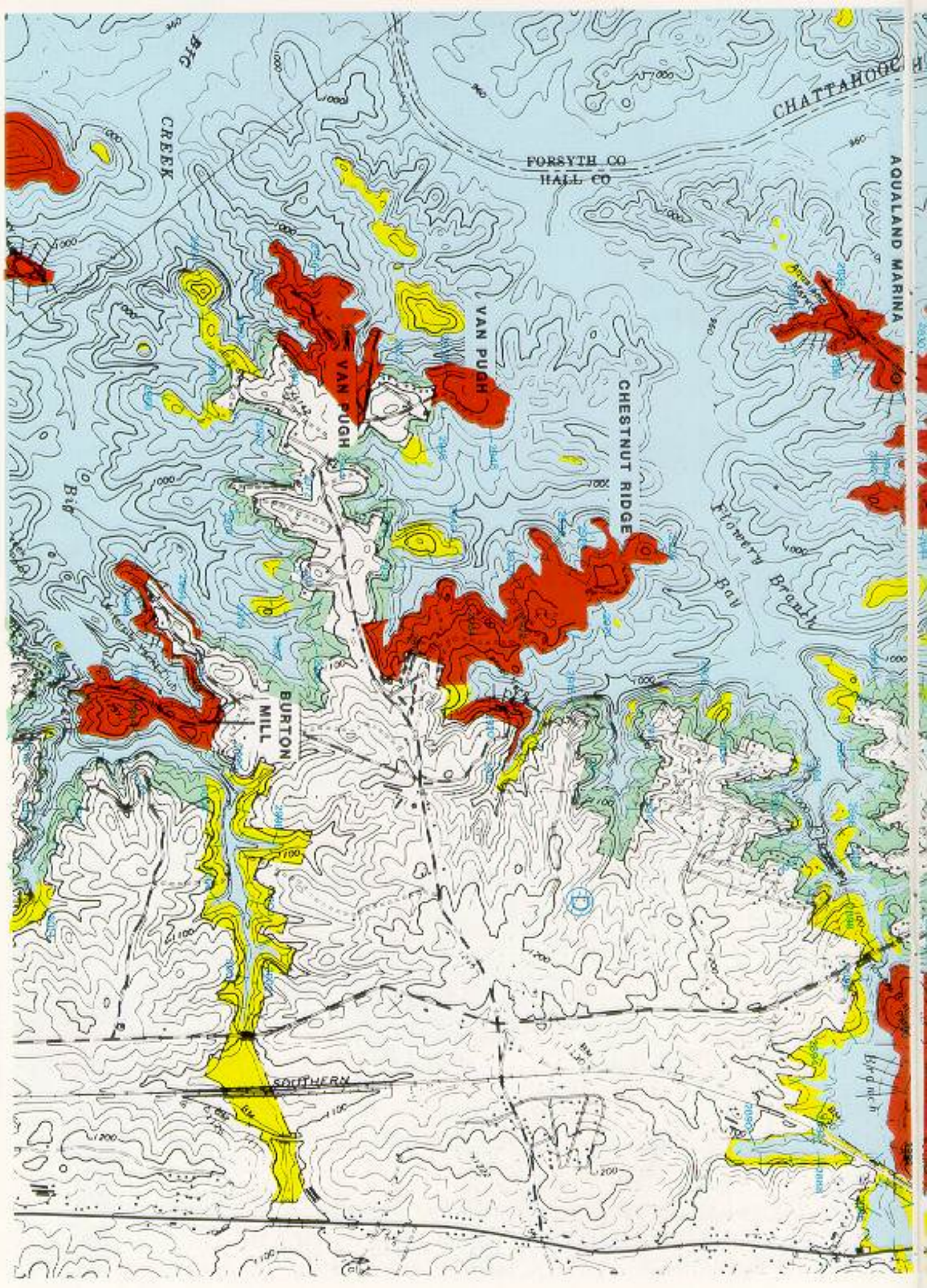












CHATTAHOOCHEE

FORSYTH CO
HALL CO

AQUALAND MARINA

CHESTNUT RIDGE

VAN PUGH

VAN PUGH

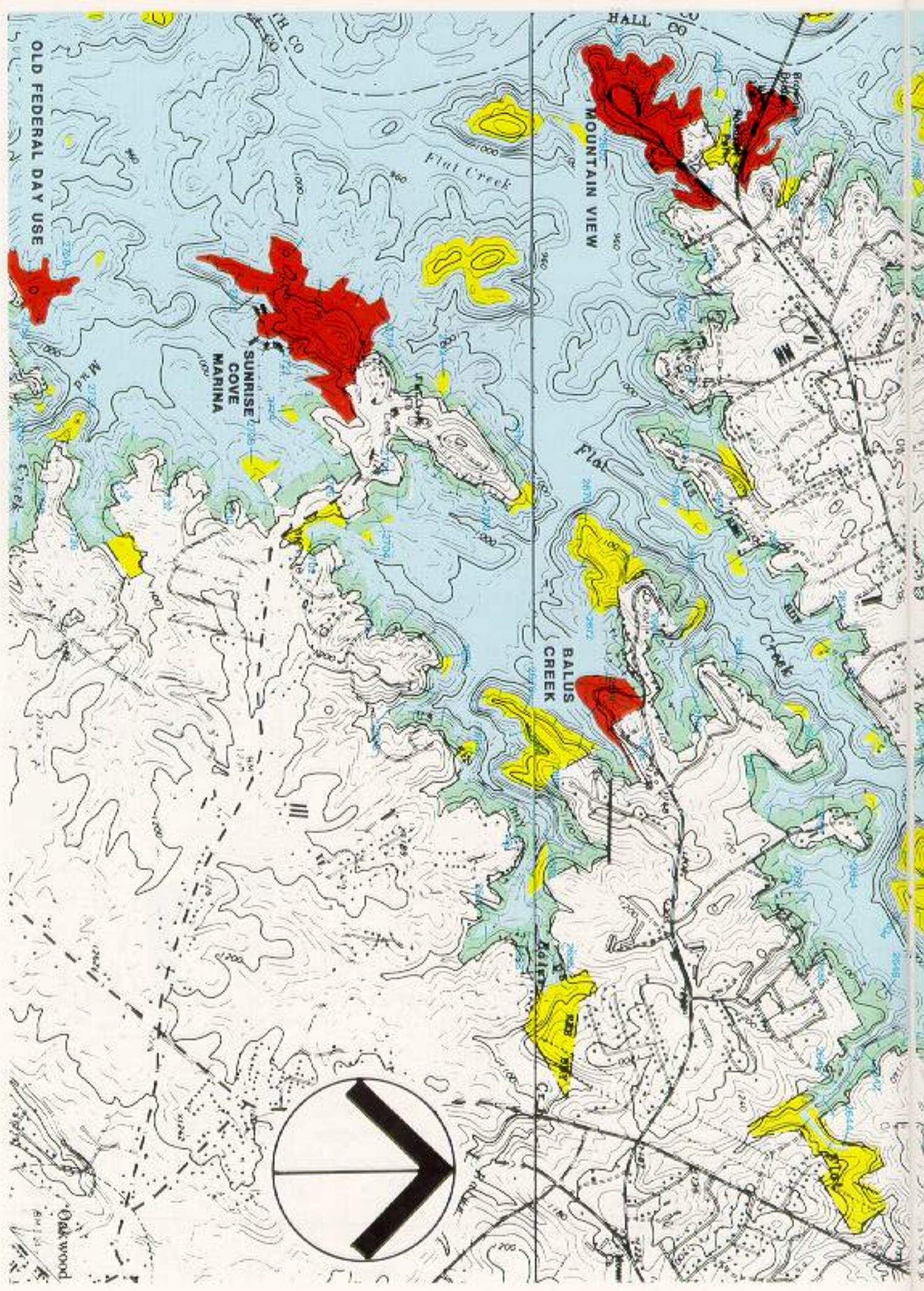
BURTON
MILL

SOUTHERN

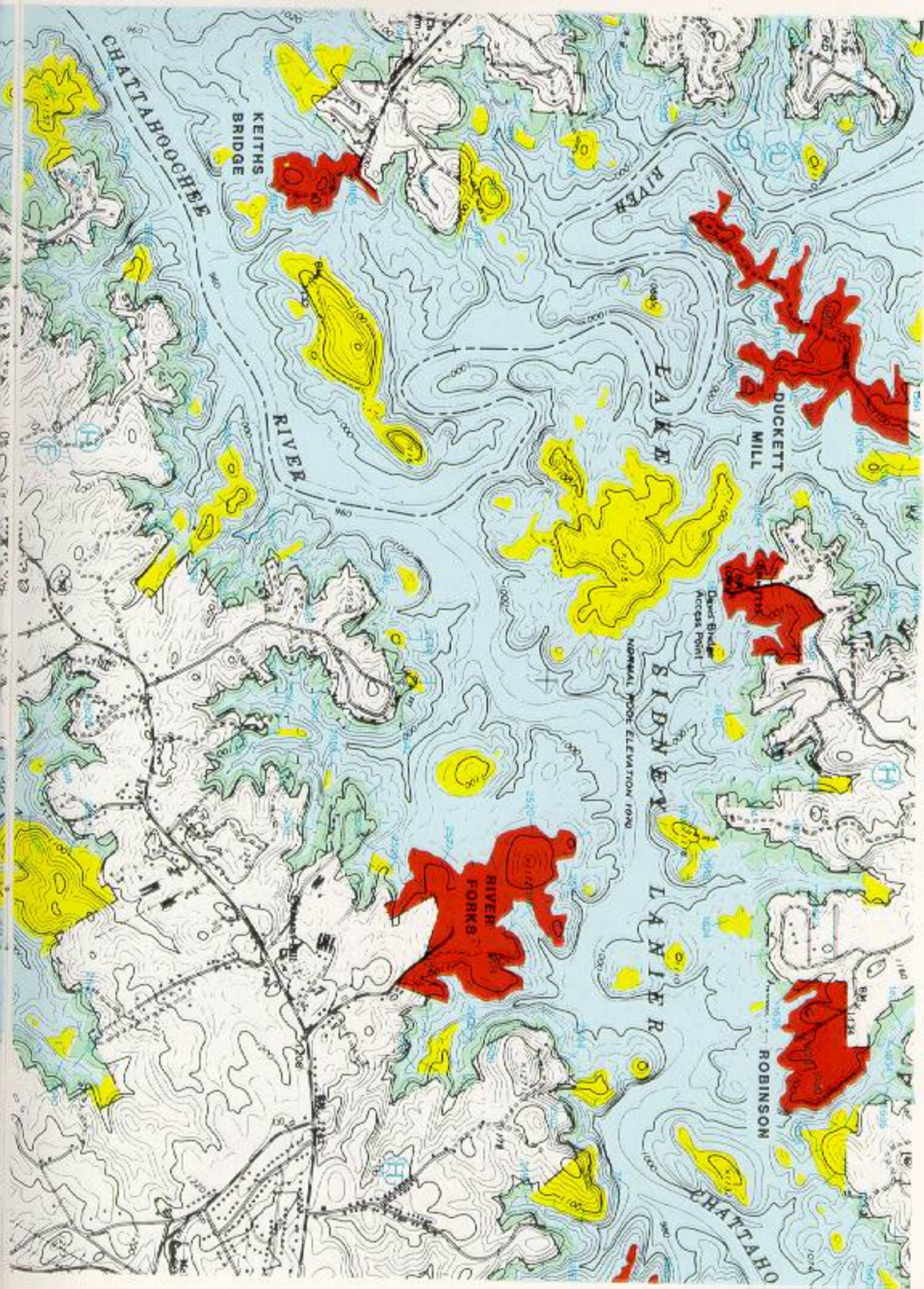
BIG
CREEK

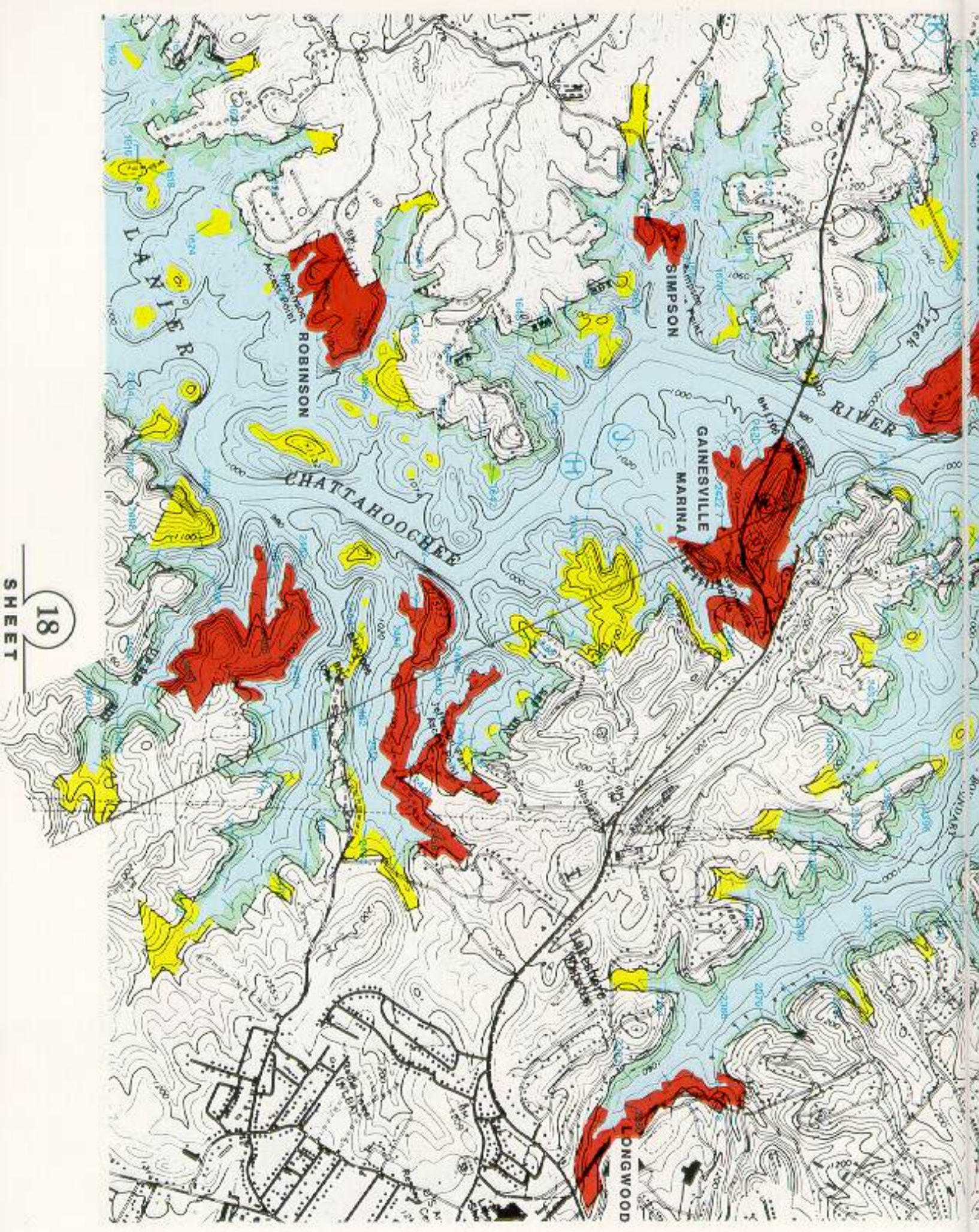
Flowers Branch
Bay

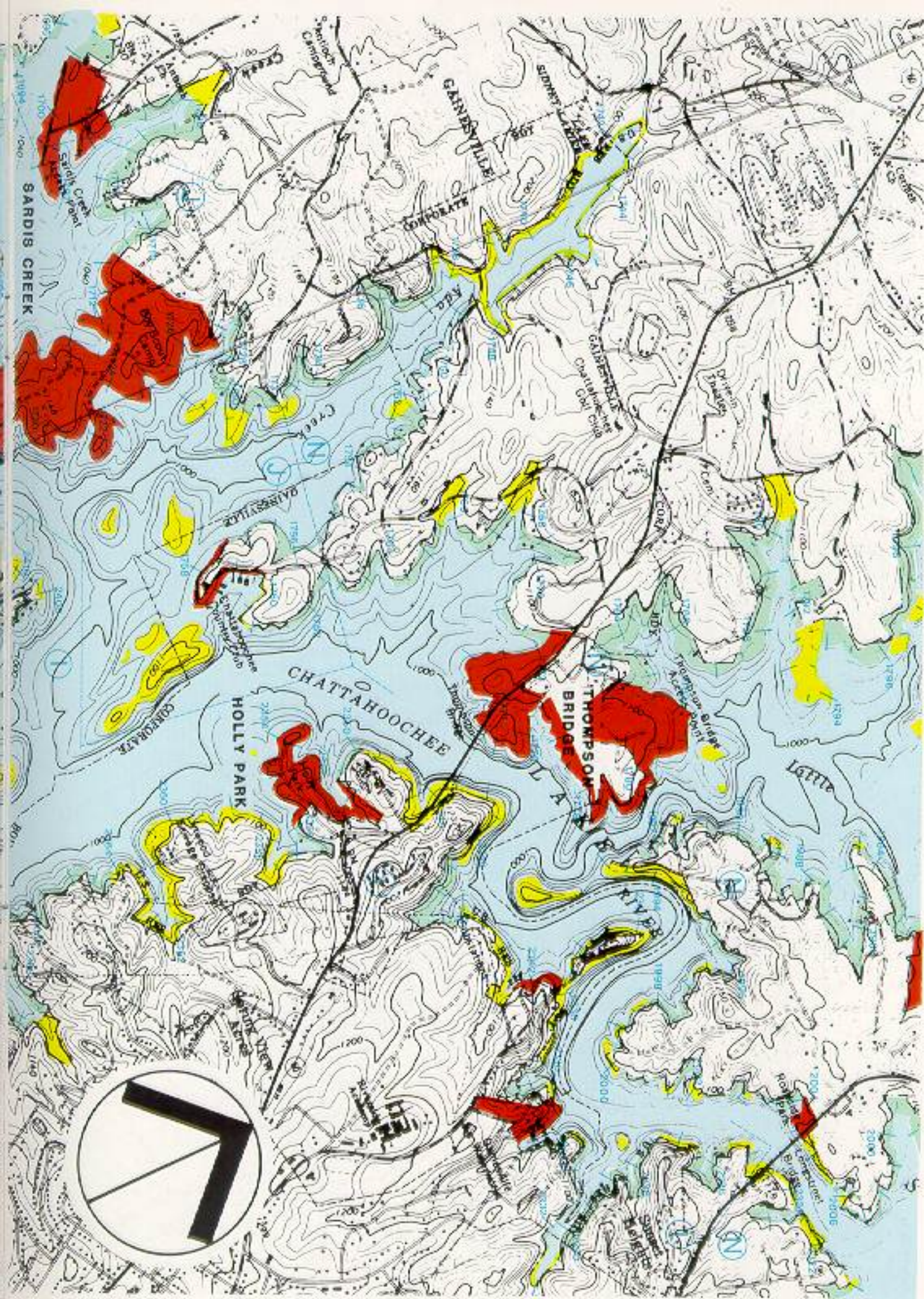


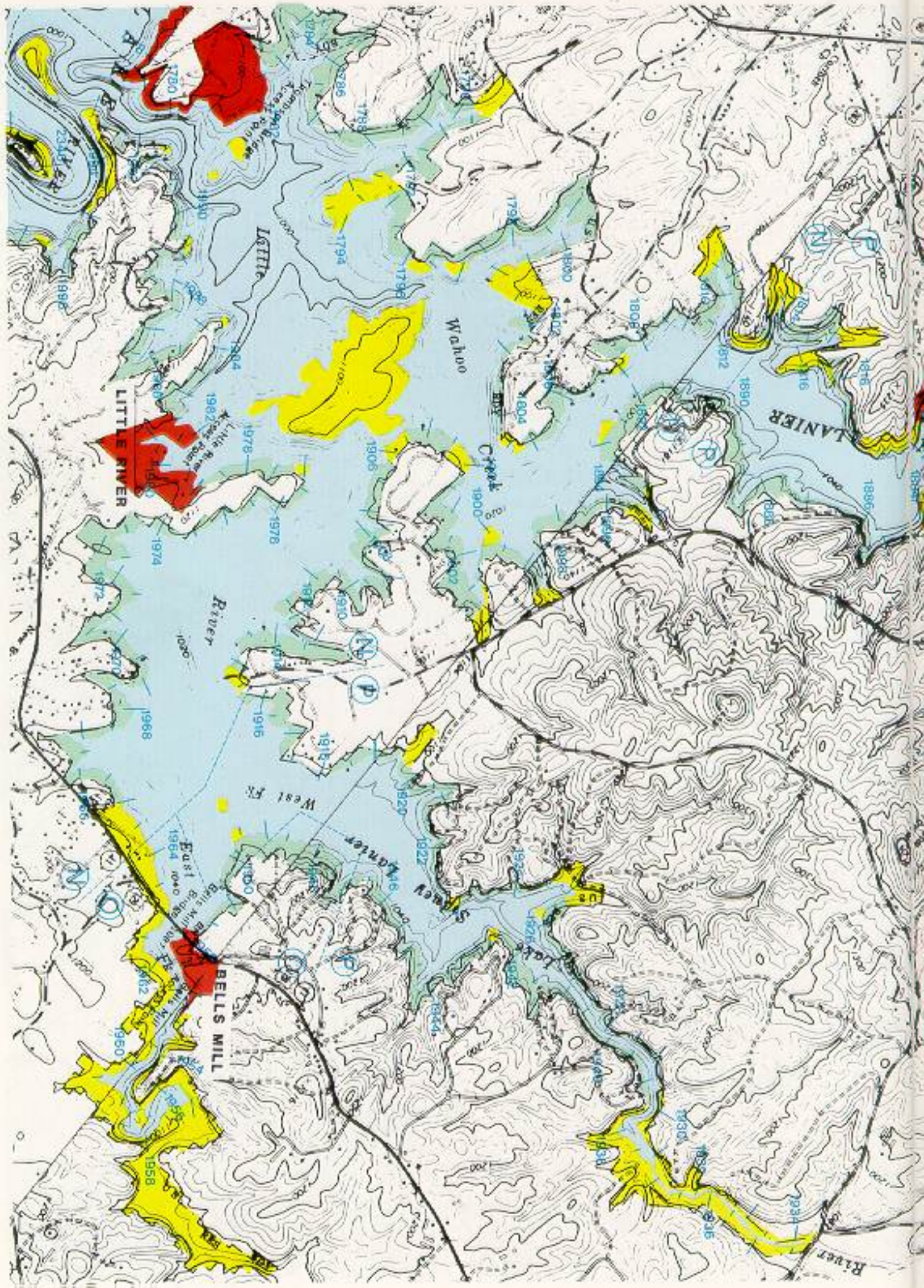


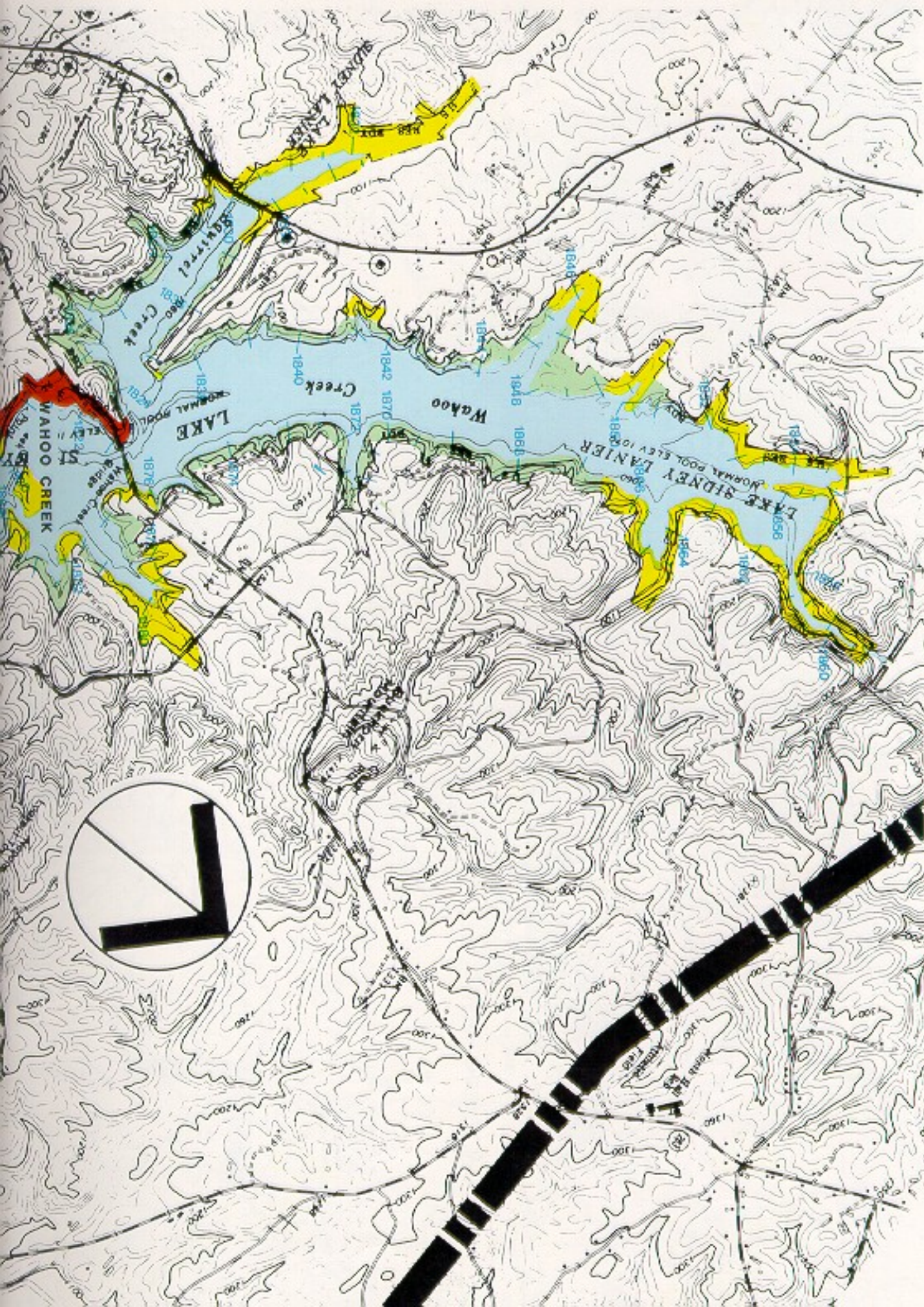
OLD FEDERAL DAY USE



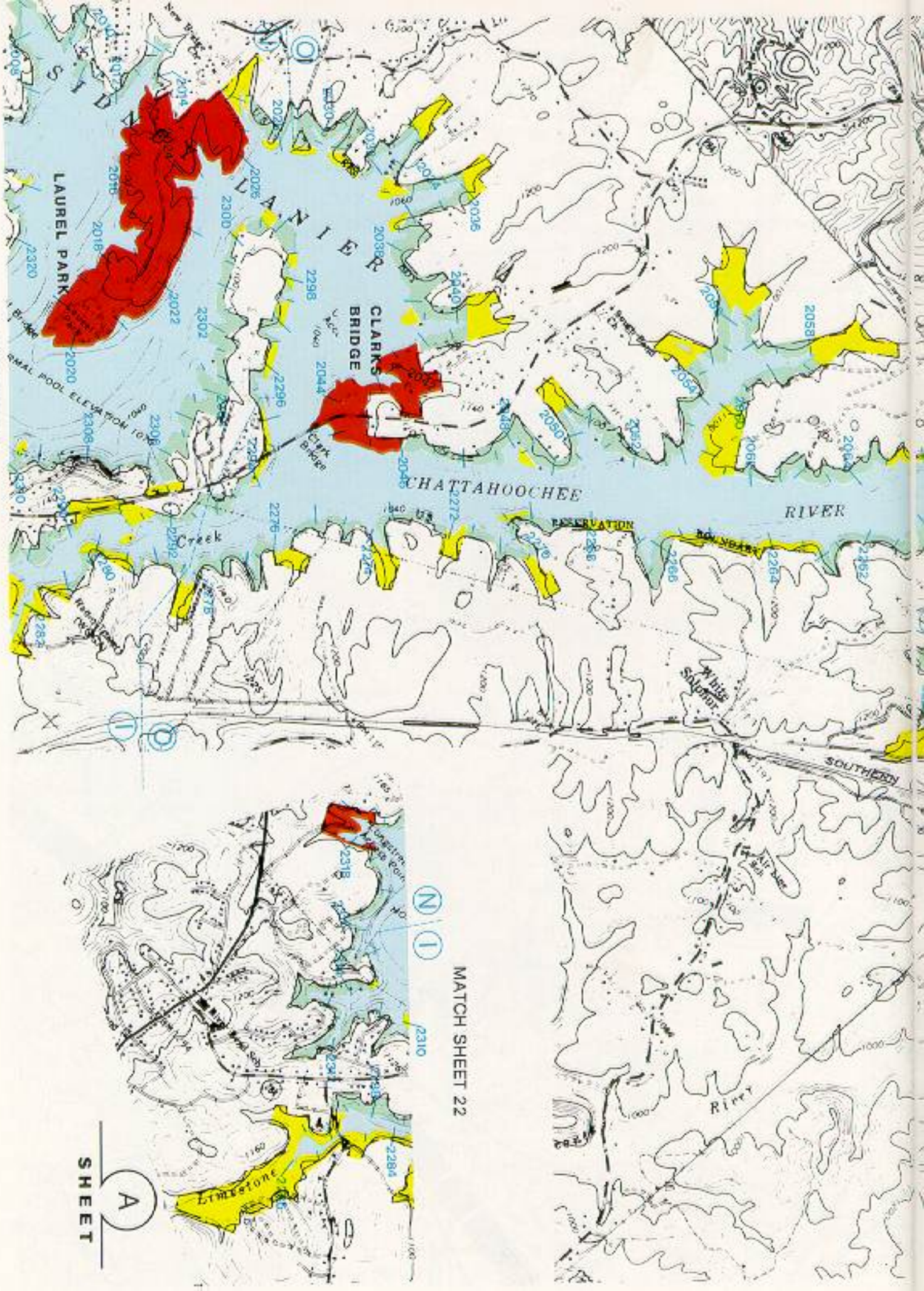








MATCH SHEET A



MATCH SHEET 22

SHEET

A



