

MISCONCEPTIONS Contrary to frequent rumors, ongoing survey efforts at

Lake Lanier are not being performed to move present property lines. The Government line is currently monumented in its permanent location, except in isolated cases where land exchanges, acquisitions or disposals would alter the property line location. Permanent survey markers are located at all property corners except where they have been accidentally destroyed by construction or by vandalism. The maintenance survey effort that is observed around the lake involves replacing missing property corners, repainting line witness trees, and setting intermittent "Point On Line" monuments between property corners. The "Point On Line" monuments will aid both reservoir personnel and adjacent property owners in locating the property line on long tangents where neither property corner marking the end of the tangent can be easily viewed. A source of misunderstanding concerning the Government property line occurs when one assumes that the painted line witness trees are the exact property line. These trees are painted to alert the observer that a property line is nearby. Also, signs are placed on some of these painted trees stating "United States Army Engineer District, Mobile - Boundary Line Nearby" or "United States Army Engineer District, Mobile - Easement Line". If activities require knowing exactly where the line is, a private registered land surveyor should be contacted. Since these painted trees are not on the exact property line, repainting may give the appearance to an adjacent property owner that the line has been "moved" when, in fact, it may only indicate that a different tree was painted.

QUESTIONS

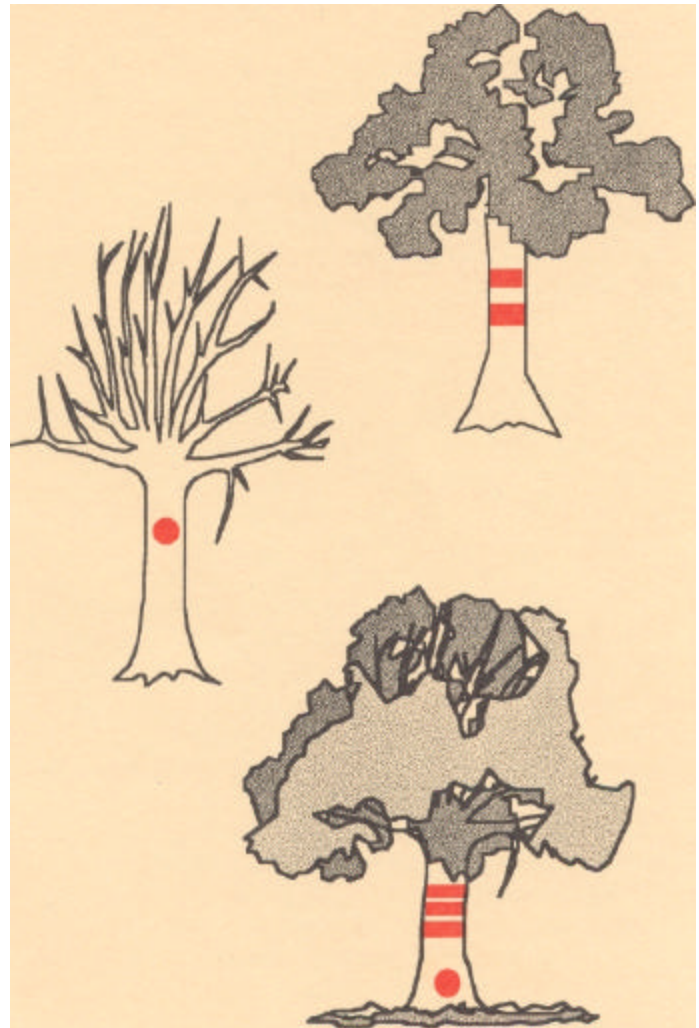
If you have questions about the location of the boundary line, contact the Lake Lanier Operation Management Office: (770) 945-9531. A field appointment with a Corps ranger can be scheduled to answer any questions you may have concerning public property and our Lakeshore Use Permit Program.

U.S. Army Corps of Engineers Lake
Sidney Lanier
P O. Box 567 Buford,
GA 30518



US Army Corps
of Engineers
Mobile District

BOUNDARY LINE MARKINGS AND PERMITTED USES OF PUBLIC LAND AT LAKE LANIER



INTRODUCTION

Annually, Lake Sidney Lanier provides a source of recreation for more than 19 million visitor days of use. The popularity of Lake Lanier's 38,000 acres of water and over 19,000 acres of land (at 1070 mean sea level) has made it the most highly visited Corps of Engineers lake in the nation. Resource protection and management is necessary to preserve the project for future generations while providing quality recreation opportunities for today's visitors. Management must insure a balance between the recreation user, the environment, and conservation of project resources. Consideration must also be given to conflicting uses between the general public and the owners of adjacent private property.

PERMITTED PRIVATE USE

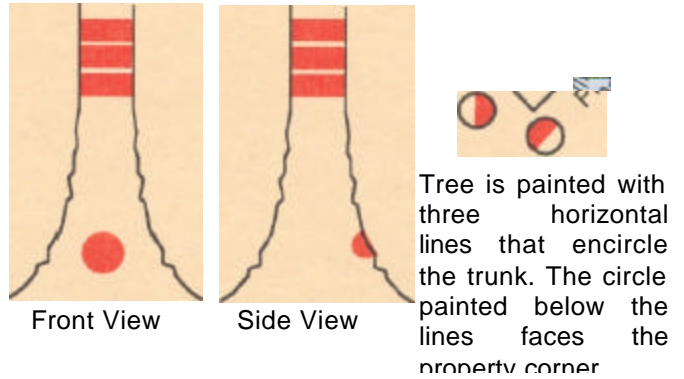
The Lakeshore Management Plan furnishes guidance for the protection and preservation of environmental characteristics of Lake Lanier's shoreline. Copies of the plan are available at the Operation Management Office. Public land adjacent to the lake is delineated into different areas of use. This designation of public land allows the District Engineer to approve specific types of private use in certain areas around the lake. Private use is regulated through a Lakeshore Use Permit program that may allow individuals with approved access to public land to construct and/or install specific facilities, such as a boat dock, or water and electric lines. Although private facilities may be authorized, the ownership of adjacent private land does not convey any exclusive rights to public land. The placing of structures or special use of public land without prior written authorization or deviation from the terms of the authorization may constitute a violation of Title 36, Part 327, United States Code of Federal Regulations.

Without proper authorization, the construction, placement, or continued existence of any structure or item of any kind under, upon, in, or over the project lands or waters and/or the destruction, injury, defacement, removal, or any alteration of public property including natural formations, historical and archeological features, and vegetation growth is unlawful.

The Corps of Engineers requests the assistance of all citizens in preventing encroachments on public or private land around Lake Lanier. To assist in identifying public property at Lanier, an extensive boundary maintenance program exists that includes the brushing out and

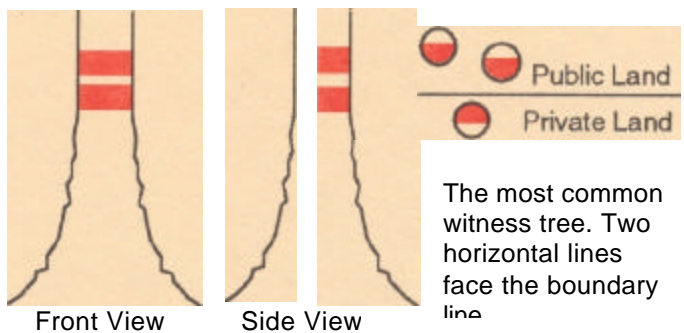
"Painting the boundary line" actually means painting witness trees near the line. At Lake Lanier, red paint is used to mark witness trees along the fee boundary. White paint is used to identify the limits of Government owned easements. Drawings 1 through 3 illustrate the different types of markings and describes their meanings.

CORNER WITNESS TREE



2

LINE WITNESS



3

CENTER LINE

