



U.S. ARMY CORPS OF ENGINEERS

BUILDING STRONG®

May 3, 2017

TECHNICAL SUPPORT BRANCH

NAVIGATION BULLETIN NO. 17-17

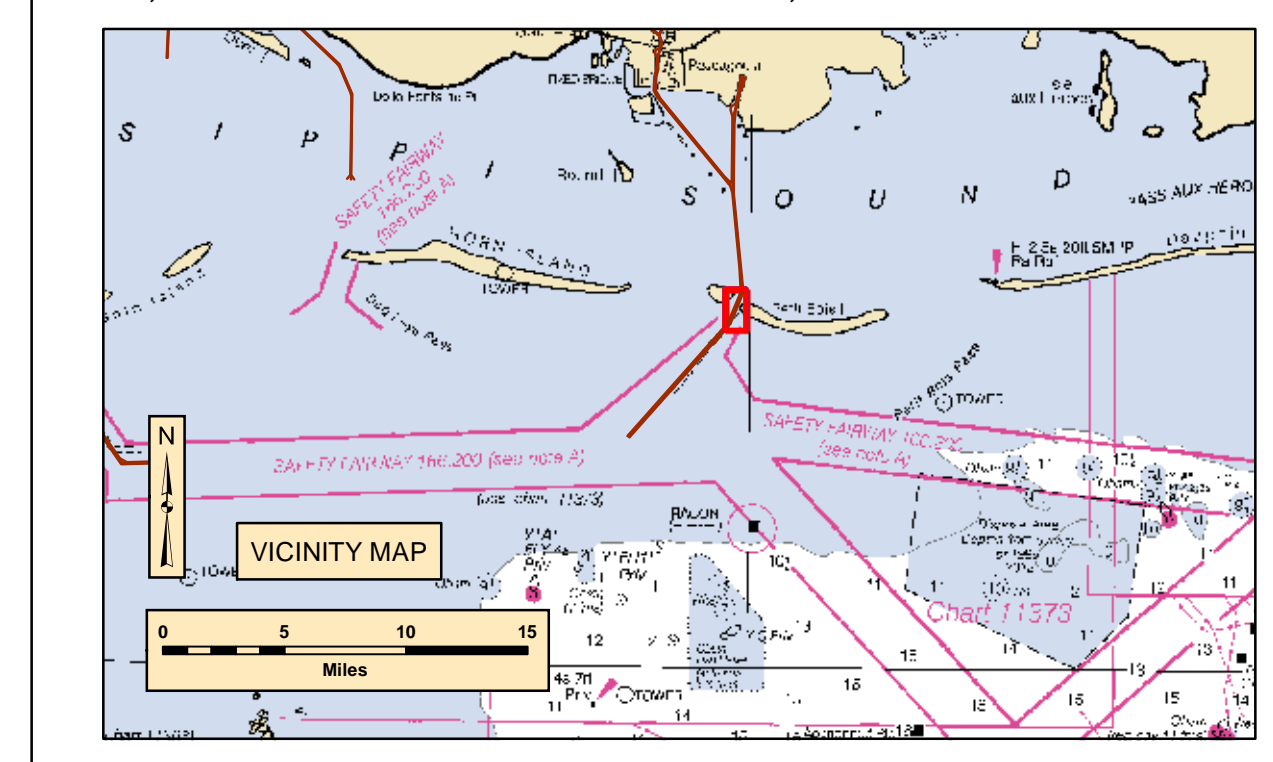
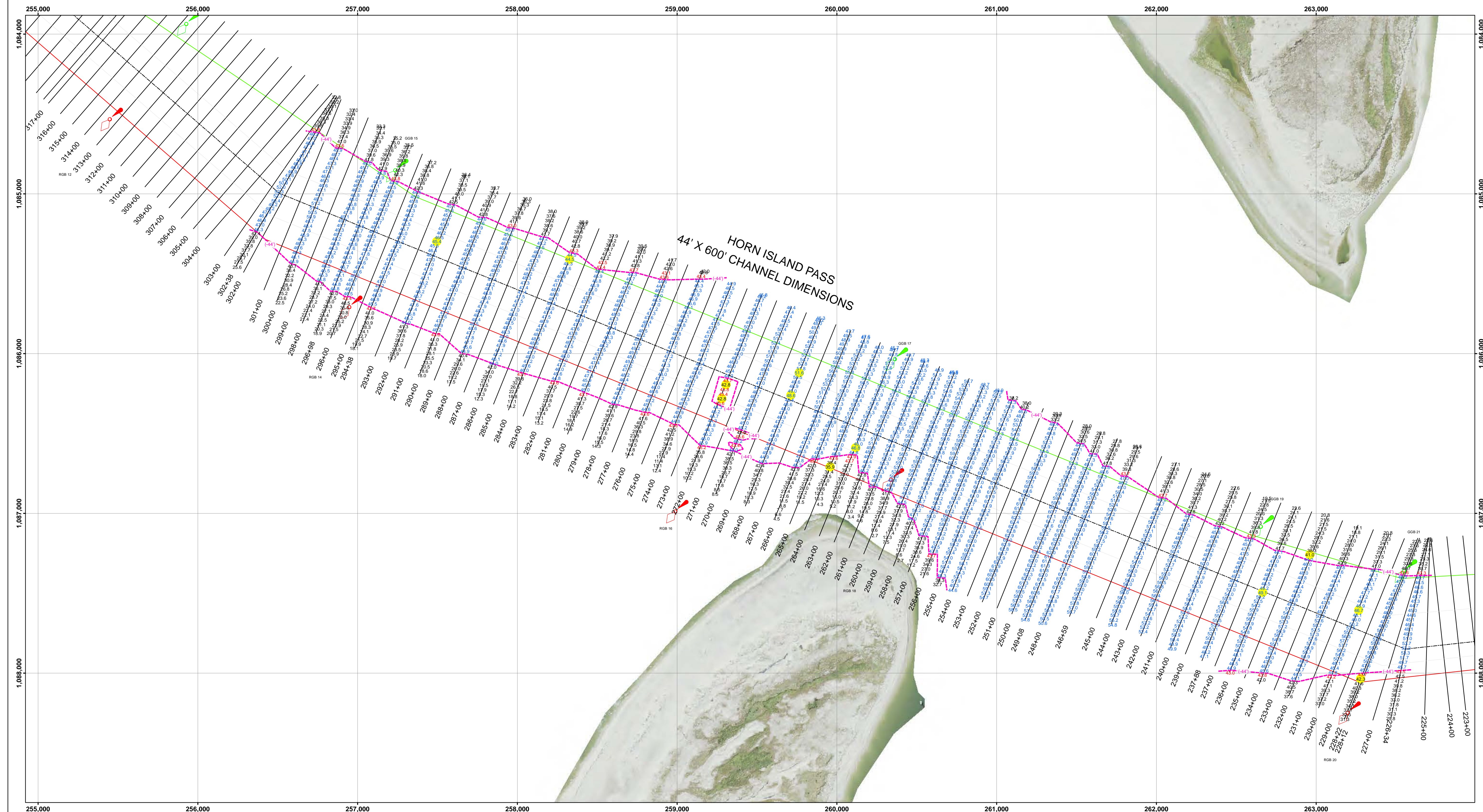
NOTICE TO NAVIGATION INTERESTS:

PASCAGOULA HARBOR, MS

Notice is given to mariners that a small shoal has developed on the eastern toe of the channel at buoys 16 and 17 near Petit Bois Island. Mariners are advised to transit this area with caution. Plans to dredge this area within the next few months are being developed. A survey of this area is attached to this Navigation Bulletin.

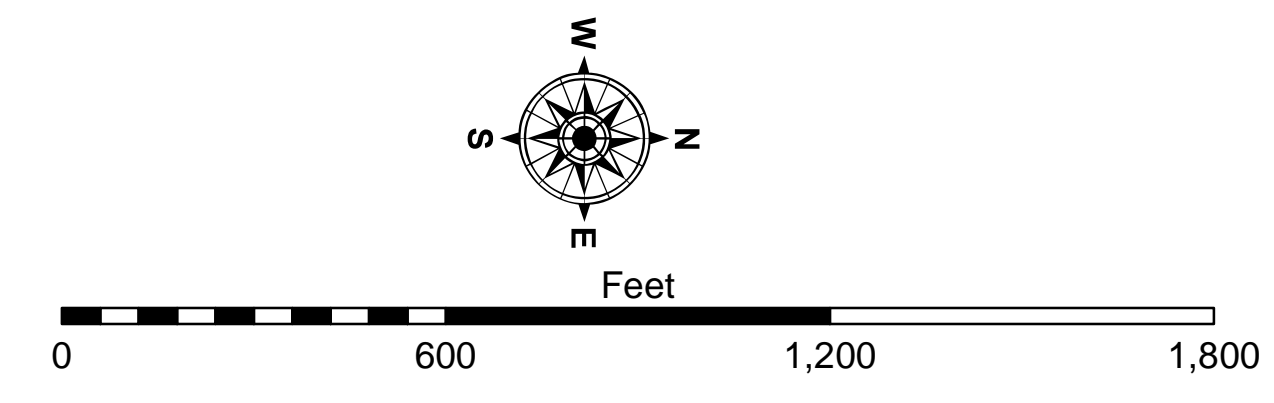
For further information please contact Steve Reid at the Irvington Site Office at (251) 957-6019.

CARL E. DYESS
Chief, Navigation Section



LEGEND

— Federal Navigation Channel	★ Range	📍 Red Beacon
- - - Federal Navigation Center Line	● Shoalest Sounding	📍 Green Beacon
- - - Contour Line	⬭ Red Gas Buoy	📍 Green Gas Buoy
🚢 Wrecks-Submerged	⬭ Green Gas Buoy	▲ Red Day Marker
● Piling	📍 Red Day Marker	■ Green Day Marker
● Channel Obstruction	📍 Green Day Marker	
⬭ Mooring Dolphin		



NOTES:

1. ALL ELEVATIONS SHOWN ARE REFERENCED TO FEET BELOW MEAN LOWER LOW WATER (M.L.L.W.).
2. COORDINATES ARE REFERENCED TO MISSISSIPPI STATE PLANE COORDINATE SYSTEM 83 DATUM EAST ZONE.
3. SURVEYED BY: H. STANLEY
4. SURVEY VESSEL: PERRY
5. SURVEY DATE: 04/09/2017
6. THE INFORMATION DEPICTED ON THIS MAP REPRESENTS THE RESULTS OF SURVEYS MADE ON THE DATES INDICATED AND CAN ONLY BE CONSIDERED AS INDICATING THE GENERAL CONDITIONS EXISTING AT THE TIME.
7. FREQUENCY SOUNDINGS: 200 KHz.

Imagery courtesy of: USDA/FSA - Aerial Photography Field Office Dated 2014



DISCLAIMER: The United States Government furnishes these data and the recipient accepts and uses them with the express understanding that the United States Government makes no warranty, expressed or implied, concerning the accuracy, completeness, reliability, usability, or suitability for any particular purpose of the data. These data are provided to the recipient under no liability whatsoever to any person by reason of any use made thereof. These data belong to the Government. Therefore, the recipient may not transfer, disseminate, or use these data to others without also transferring this Disclaimer.

U.S. ARMY CORPS OF ENGINEERS MOBILE DISTRICT		
Submitted By:	Surveyed By:	
Recommended By: H. BULLOCK Chief, Survey Section	Plotted By:	
Approved By: S. REID Chief, Waterways Maintenance Section	Checked By:	

PASCAGOULA HARBOR, MISSISSIPPI
PH_02_PHI_20170409_CS
Horn Island Pass
STA.226+34 - 302+38
CONDITIONAL SURVEY

Sheet Reference Number
1 of 1