

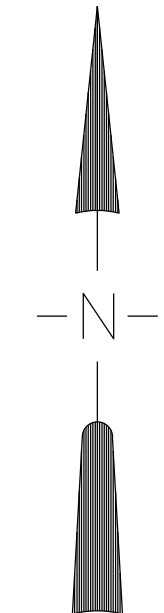
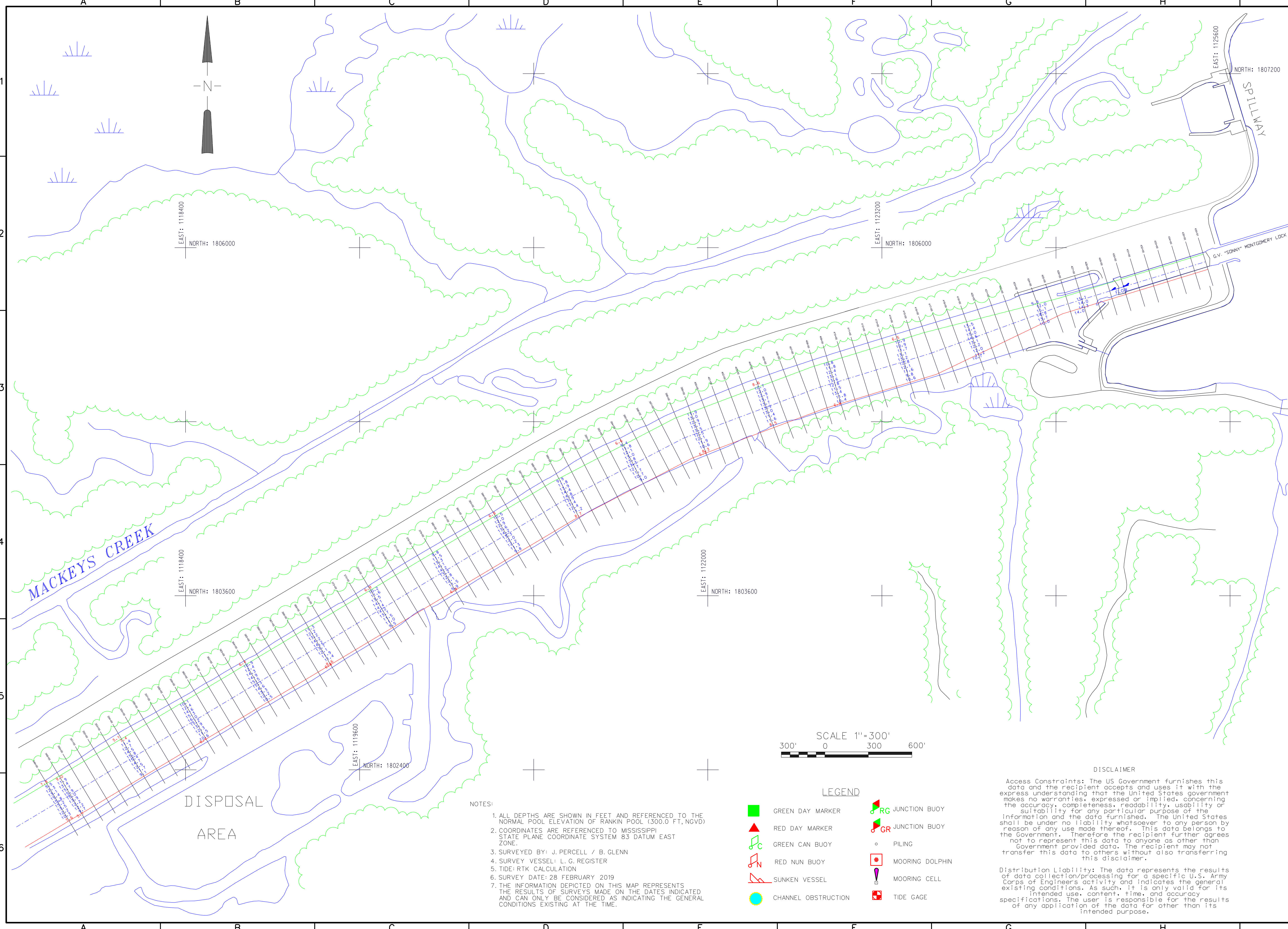
US Army Corps of Engineers
Mobile District

Symbol	Description	Date	Approved

Date:	07 MARCH 2019
Designed By:	
Drawn By:	G. KELLY
Checked By:	J. BROWN
Reviewed By:	J. OLIVER
File No.:	
U.S.O. Sheet File Name:	
Solicitation Number:	

TENNESSEE TOMBIGBEE WATERWAY
RANKIN POOL
RA06-4050-4067-28FEBRUARY2019
MI 405.0 TO MI 406.7
CONDITION SURVEY

Sheet Reference Number:
6 OF 6



LEGEND

GREEN DAY MARKER	RC JUNCTION BUOY
RED DAY MARKER	GR JUNCTION BUOY
GREEN CAN BUOY	PILING
RED NUN BUOY	MOORING DOLPHIN
SUNKEN VESSEL	MOORING CELL
CHANNEL OBSTRUCTION	TIDE GAGE

- NOTES:
1. ALL DEPTHS ARE SHOWN IN FEET AND REFERENCED TO THE NORMAL POOL ELEVATION OF RANKIN POOL (300.0 FT, NGVD)
 2. COORDINATES ARE REFERENCED TO MISSISSIPPI STATE PLANE COORDINATE SYSTEM 83 DATUM EAST ZONE.
 3. SURVEYED BY: J. PERCELL / B. GLENN
 4. SURVEY VESSEL: L. G. REGISTER
 5. TIDE: RTK CALCULATION
 6. SURVEY DATE: 28 FEBRUARY 2019
 7. THE INFORMATION DEPICTED ON THIS MAP REPRESENTS THE RESULTS OF SURVEYS MADE ON THE DATES INDICATED AND CAN ONLY BE CONSIDERED AS INDICATING THE GENERAL CONDITIONS EXISTING AT THE TIME.

DISCLAIMER

Access Constraints: The US Government furnishes this data and the recipient accepts and uses it with the express understanding that the United States government makes no warranties, expressed or implied, concerning the accuracy, completeness, readability, usability or suitability for any particular purpose of the information and the data furnished. The United States shall be under no liability whatsoever to any person by reason of any use made thereof. This data belongs to the government. Therefore the recipient further agrees not to represent this data to anyone as other than Government provided data. The recipient may not transfer this data to others without also transferring this disclaimer.

Distribution Liability: The data represents the results of data collection/processing for a specific U.S. Army Corps of Engineers activity and indicates the general existing conditions. As such, it is only valid for its intended use, content, time, and accuracy specifications. The user is responsible for the results of any application of the data for other than its intended purpose.