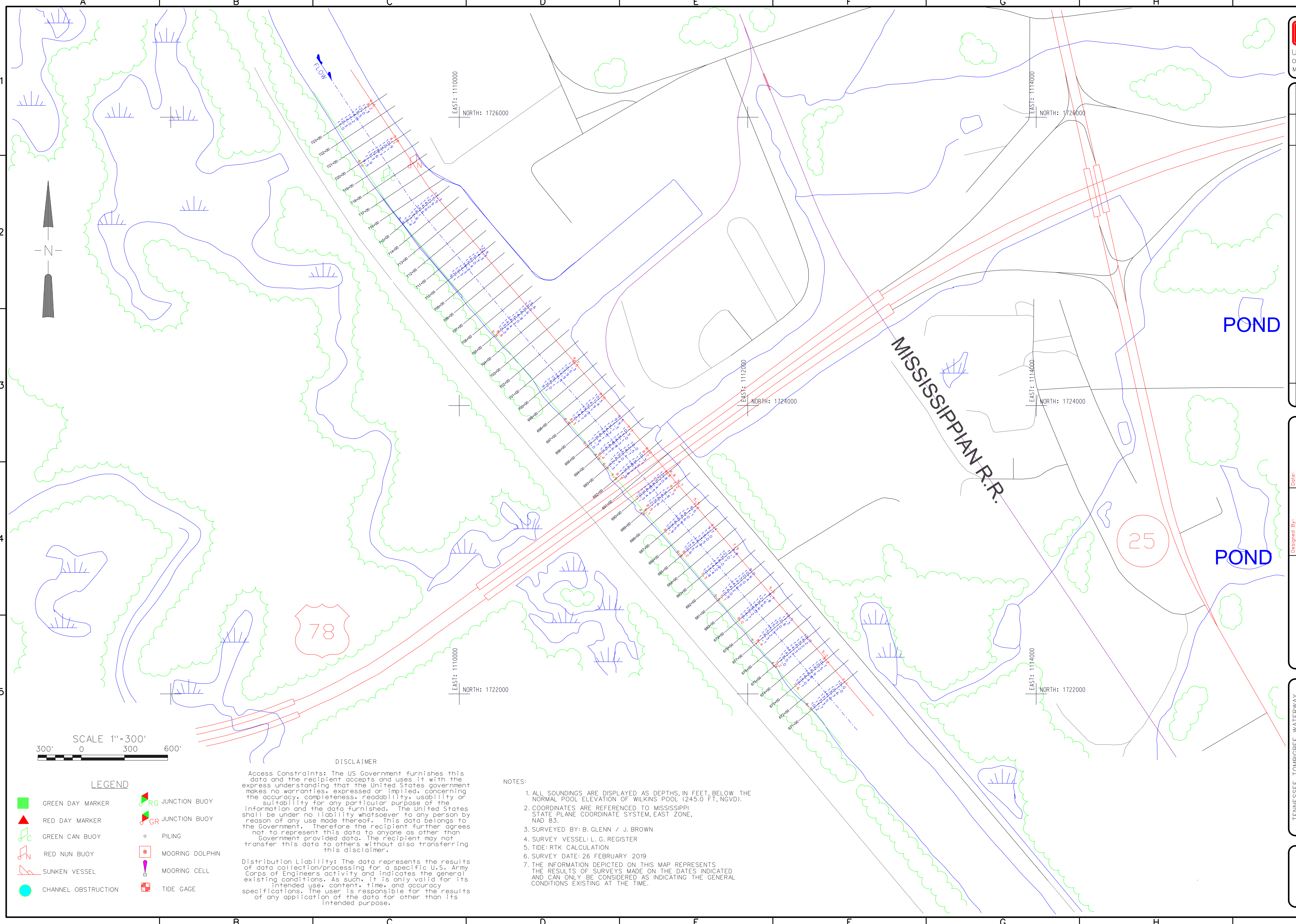


Symbol	Description	Date	Approved

U.S. ARMY ENGINEER DISTRICT CORPS OF ENGINEERS MOBILE, ALABAMA	Designed By: G. KELLY	Date: 06 MARCH 2019
	Drawn By: J. BROWN	File No.:
	Checked By: J. OLIVER	U.S.O. Sheet File Name:
	Reviewed By:	Selection Number:

TENNESSEE TOMBIGBEE WATERWAY  
 WILKINS POOL  
 GW10\_3890-3900\_26FEBRUARY2019  
 MI 389.0 TO MI 390.0  
 CONDITION SURVEY

Sheet  
 Reference  
 Number:  
 10 OF 11



SCALE 1"=300'  
 300' 0 300 600'

**LEGEND**

- |                     |                  |
|---------------------|------------------|
| GREEN DAY MARKER    | RG JUNCTION BUOY |
| RED DAY MARKER      | GR JUNCTION BUOY |
| GREEN CAN BUOY      | PILING           |
| RED NUN BUOY        | MOORING DOLPHIN  |
| SUNKEN VESSEL       | MOORING CELL     |
| CHANNEL OBSTRUCTION | TIDE GAGE        |

**DISCLAIMER**

Access Constraints: The US Government furnishes this data and the recipient accepts and uses it with the express understanding that the United States government makes no warranties, expressed or implied, concerning the accuracy, completeness, readability, usability or suitability for any particular purpose of the information and the data furnished. The United States shall be under no liability whatsoever to any person by reason of any use made thereof. This data belongs to the Government. Therefore the recipient further agrees not to represent this data to anyone as other than Government provided data. The recipient may not transfer this data to others without also transferring this disclaimer.

**Distribution Liability:** The data represents the results of data collection/processing for a specific U.S. Army Corps of Engineers activity and indicates the general existing conditions. As such, it is only valid for its intended use, content, time, and accuracy specifications. The user is responsible for the results of any application of the data for other than its intended purpose.

- NOTES:**
1. ALL SOUNDINGS ARE DISPLAYED AS DEPTHS, IN FEET, BELOW THE NORMAL POOL ELEVATION OF WILKINS POOL (245.0 FT. NGVD).
  2. COORDINATES ARE REFERENCED TO MISSISSIPPI STATE PLANE COORDINATE SYSTEM, EAST ZONE, NAD 83.
  3. SURVEYED BY: B. GLENN / J. BROWN
  4. SURVEY VESSEL: L. G. REGISTER
  5. TIDE: RTK CALCULATION
  6. SURVEY DATE: 26 FEBRUARY 2019
  7. THE INFORMATION DEPICTED ON THIS MAP REPRESENTS THE RESULTS OF SURVEYS MADE ON THE DATES INDICATED AND CAN ONLY BE CONSIDERED AS INDICATING THE GENERAL CONDITIONS EXISTING AT THE TIME.