

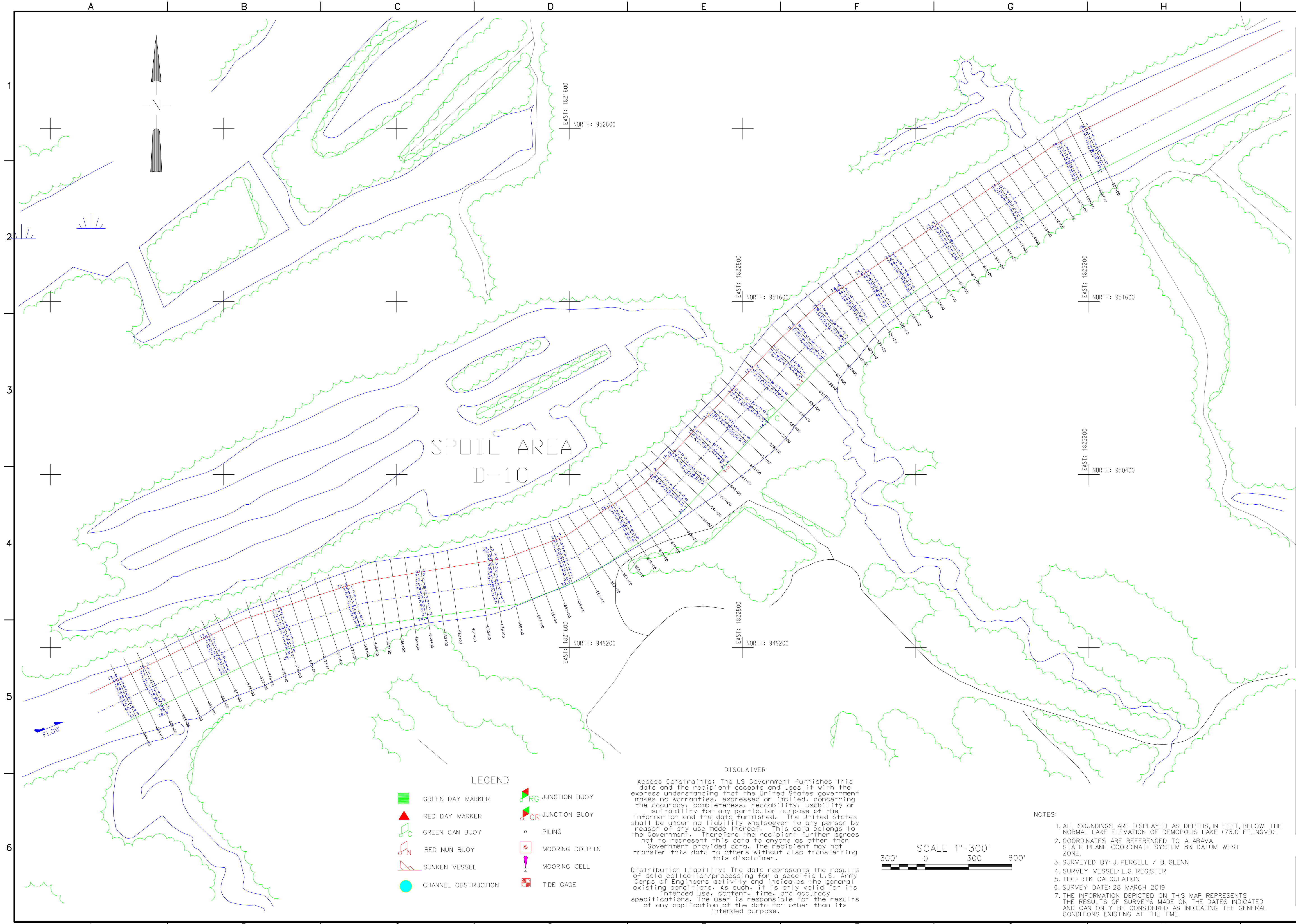
US Army Corps of Engineers
Mobile District

Date	File No.	U.S.O. Sheet File Name	Solicitation Number	Symbol	Description	Date	Approved
18 APRIL 2019							

DESIGNED BY:	DATE:
U.S. ARMY ENGINEER DISTRICT CORPS OF ENGINEERS MOBILE, ALABAMA	18 APRIL 2019
DRAWN BY:	FILE NO.:
G. KELLY	
CHECKED BY:	U.S.O. SHEET FILE NAME:
J. BROWN	
RELEASED BY:	SOLICITATION NUMBER:
J. OLIVER	

TENNESSEE TOMBIGBEE WATERWAY
DEMOPOLIS LAKE
DE09-2285-2300-28MARCH2019
MI 228.5 TO MI 230.0
CONDITION SURVEY

Sheet Reference Number:
9 OF 33



LEGEND

- GREEN DAY MARKER
- ▲ RED DAY MARKER
- GREEN CAN BUOY
- RED NUN BUOY
- ⚓ SUNKEN VESSEL
- CHANNEL OBSTRUCTION
- ⚓ RG JUNCTION BUOY
- ⚓ GR JUNCTION BUOY
- PILING
- ⊗ MOORING DOLPHIN
- ⊠ MOORING CELL
- ⊠ TIDE GAGE

DISCLAIMER

Access Constraints: The US Government furnishes this data and the recipient accepts and uses it with the express understanding that the United States government makes no warranties, expressed or implied, concerning the accuracy, completeness, readability, usability or suitability for any particular purpose of the information and the data furnished. The United States shall be under no liability whatsoever to any person by reason of any use made thereof. This data belongs to the government. Therefore the recipient further agrees not to represent this data to anyone as other than Government provided data. The recipient may not transfer this data to others without also transferring this disclaimer.

Distribution Liability: The data represents the results of data collection/processing for a specific U.S. Army Corps of Engineers activity and indicates the general existing conditions. As such, it is only valid for its intended use, content, time, and accuracy specifications. The user is responsible for the results of any application of the data for other than its intended purpose.

NOTES:

- ALL SOUNDINGS ARE DISPLAYED AS DEPTHS, IN FEET, BELOW THE NORMAL LAKE ELEVATION OF DEMOPOLIS LAKE (73.0 FT. NGVD).
- COORDINATES ARE REFERENCED TO ALABAMA STATE PLANE COORDINATE SYSTEM 83 DATUM WEST ZONE.
- SURVEYED BY: J. PERCELL / B. GLENN
- SURVEY VESSEL: L.G. REGISTER
- TIDE: RTK CALCULATION
- SURVEY DATE: 28 MARCH 2019
- THE INFORMATION DEPICTED ON THIS MAP REPRESENTS THE RESULTS OF SURVEYS MADE ON THE DATES INDICATED AND CAN ONLY BE CONSIDERED AS INDICATING THE GENERAL CONDITIONS EXISTING AT THE TIME.

