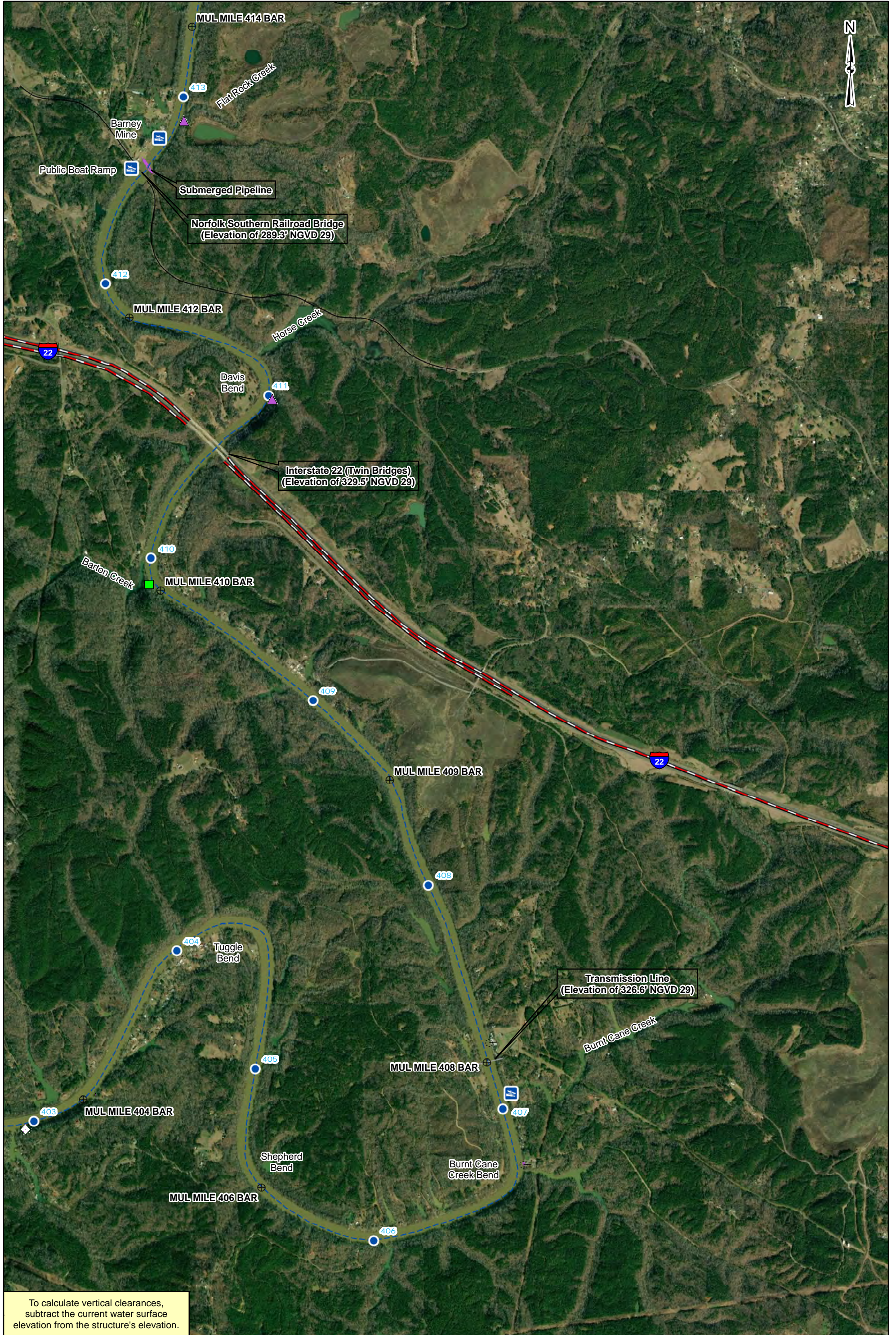


To calculate vertical clearances, subtract the current water surface elevation from the structure's elevation.

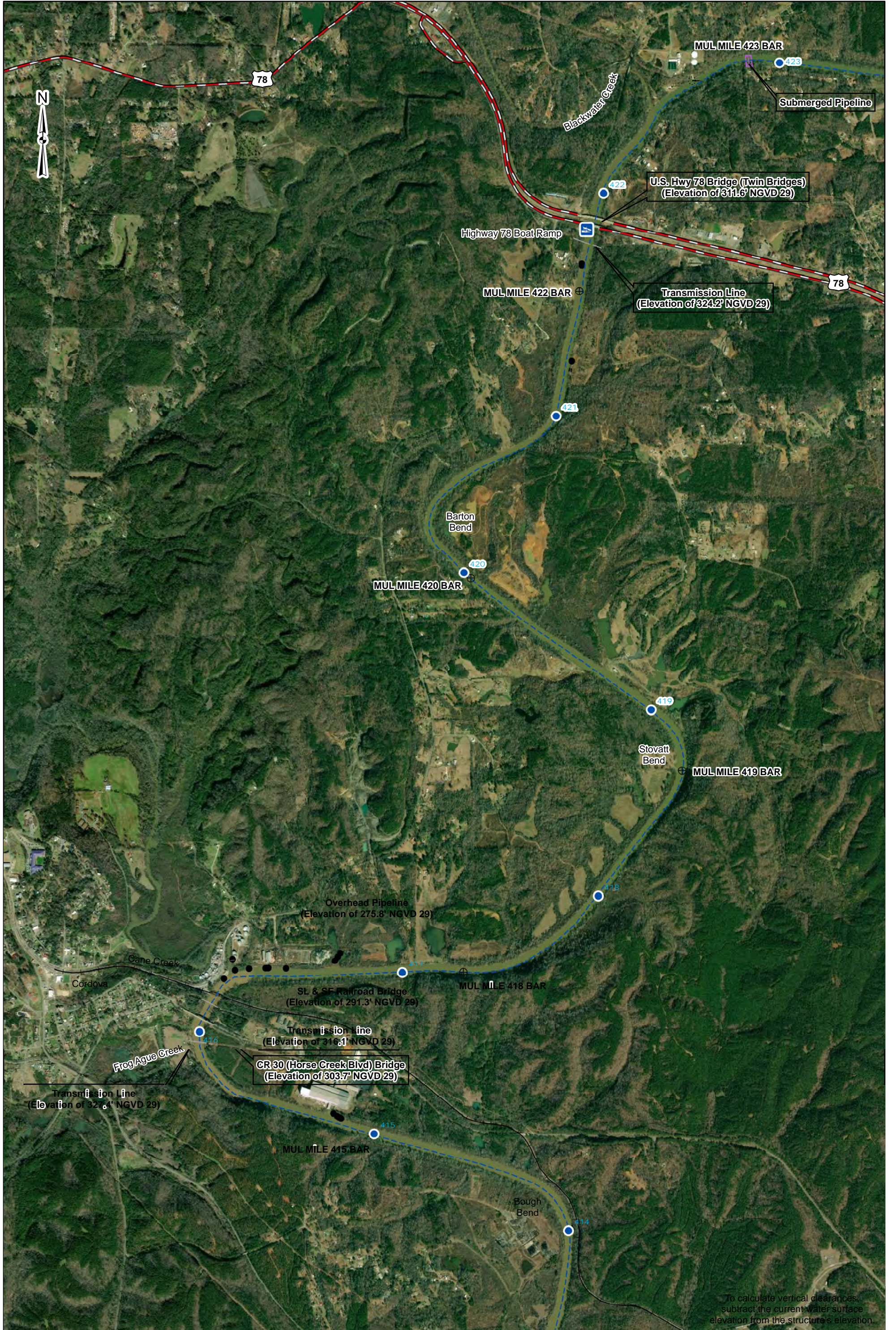




To calculate vertical clearances, subtract the current water surface elevation from the structure's elevation.



To calculate vertical clearances,
 subtract the current water surface
 elevation from the structure's elevation.



To calculate vertical clearances,
 subtract the current water surface
 elevation from the structure's elevation.



CR 22 (Sipsey Rd) Bridge
 (Elevation of 298.2' NGVD 29)
 (Head of Navigation Mulberry Fork)

Transmission Line
 (Elevation of 307.2' NGVD 29)

SL & SF Railroad (Converted into Coyle Rd) Bridge
 (Elevation of 298.2' NGVD 29)

CR 15/22 (Sipsey Rd) Old Bridge
 (Elevation of 306.3' NGVD 29)
 (Head of Navigation Sipsey Fork)

CR 15/22 (Sipsey Rd) Bridge
 (Elevation of 310.4' NGVD 29)
 (Head of Navigation Sipsey Fork)

MUL MILE 429 BAR

MUL MILE 427 BAR

MUL MILE 425 BAR

To calculate vertical clearances,
 subtract the current water surface
 elevation from the structure's elevation.