

Welcome to Geographic Information Systems (GIS) website for the Black Warrior, Tombigbee, and Alabama Rivers. You can use this website to view the bathymetry of these rivers, retrieve data about them, and download both current and, if available, historical surveys.

Zooming In/Out on the Map

When you open the Alabama/Black Warrior/Tombigbee Rivers GIS website, a map displays the full extent of the three rivers.

Note: When you first open the map, you must click on it before you can zoom in to a location.

Zoom In

- **Mouse**—Click anywhere on the map and scroll the mouse wheel forward.
- **Mouse and Keyboard**—Hold down the Shift key and drag a box on the map to quickly zoom in to that location. The smaller the box, the larger the zoom.
- **Slider Bar**—Drag the slider bar (in the lower-left corner) up to make the map larger.

Zoom Out

- **Mouse**—Click anywhere on the map and scroll the mouse wheel backward.
- **Mouse and Keyboard**—Hold down the Ctrl and Shift keys and drag a box on the map to quickly zoom out to that location. The smaller the box, the larger the reduction.
- **Slider Bar**—Drag the slider bar (in the lower-left corner) down to make the map smaller.



Moving Around on the Map

- **Mouse**—Press and hold down the left mouse button and then drag the map in the appropriate direction.
- **Compass Rose**—Click one of the directional arrows on the compass rose (lower-left corner)

Displaying Bathymetric Data

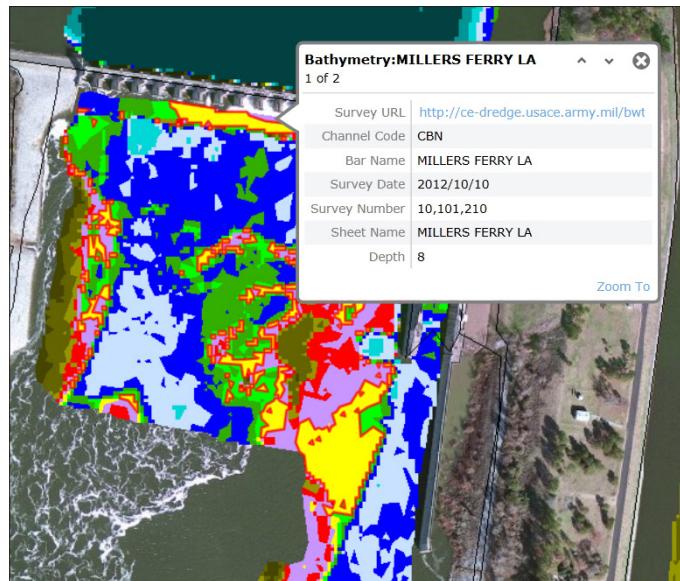
Note: You must be zoomed in close enough to display the river's bathymetry before you can display the related data.

1. After zooming in to the appropriate location on one of the rivers, click a point.

A pop-up displays bathymetric data for the selected point.

Note: If the pop-up includes more than one panel of data, the number of panels is noted immediately below the pop-up title (for example, "1 of 2"). Click ^ or v to scroll through the panels.

2. Click ✕ to close the pop-up.

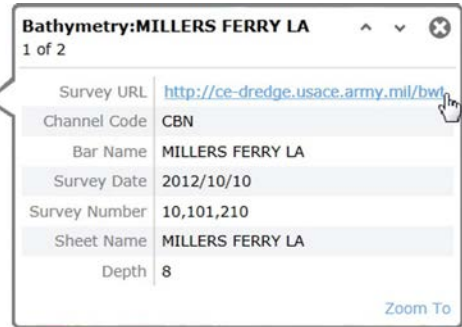


Downloading a Survey

1. With the bathymetric data panel for a specific point displayed, click the Survey URL hyperlink.

The Survey Downloader displays, listing and highlighting the most current surveys available.

If historical surveys are also available, they are listed as links below the most current surveys in reverse chronological order.



Survey Downloader

Claiborne (CBN)

Detailed Bar Surveys (13)

Bar: MILLERS FERRY LA - 4/18/2011

Type: BAS • Class: Bathymetry • Survey #04181130

Historical Detailed Surveys:

- [Bar: MILLERS FERRY LA - 9/23/2010](#) (Type: BAS • Class: Bathymetry • Survey #09231052)
- [Bar: MILLERS FERRY LA - 3/9/2010](#) (Type: BAS • Class: Bathymetry • Survey #03091050)
- [Bar: MILLERS FERRY LA - 6/29/2009](#) (Type: BAS • Class: Bathymetry • Survey #06290940)
- [Bar: MILLERS FERRY LA - 6/19/2008](#) (Type: BAS • Class: Bathymetry • Survey #06190830)
- [Bar: MILLERS FERRY LA - 2/27/2008](#) (Type: BAS • Class: Bathymetry • Survey #02270810)
- [Bar: MILLERS FERRY LA - 10/24/2007](#) (Type: BAS • Class: Bathymetry • Survey #10240720)
- [Bar: MILLERS FERRY LA - 8/7/2007](#) (Type: BAS • Class: Bathymetry • Survey #08070731)
- [Bar: MILLERS FERRY LA - 5/30/2007](#) (Type: BAS • Class: Bathymetry • Survey #05300720)
- [Bar: MILLERS FERRY LA - 4/10/2007](#) (Type: BAS • Class: Bathymetry • Survey #04100730)
- [Bar: MILLERS FERRY LA - 4/12/2006](#) (Type: BAS • Class: Bathymetry • Survey #04120631)
- [Bar: MILLERS FERRY LA - 5/24/2005](#) (Type: BAS • Class: Bathymetry • Survey #05240530)
- [Bar: MILLERS FERRY LA - 5/26/1999](#) (Type: BAS • Class: Bathymetry • Survey #05269930)

Bank to Bank Surveys (13)

Sheet: MILLERS FERRY LA - 4/18/2011

Type: BAS • Class: Bathymetry • Survey #04181130

Historical Bar to Bar Surveys:

- [Sheet: MILLERS FERRY LA - 9/23/2010](#) (Type: BAS • Class: Bathymetry • Survey #09231052)
- [Sheet: MILLERS FERRY LA - 3/9/2010](#) (Type: BAS • Class: Bathymetry • Survey #03091050)
- [Sheet: MILLERS FERRY LA - 6/29/2009](#) (Type: BAS • Class: Bathymetry • Survey #06290940)
- [Sheet: MILLERS FERRY LA - 6/19/2008](#) (Type: BAS • Class: Bathymetry • Survey #06190830)
- [Sheet: MILLERS FERRY LA - 2/27/2008](#) (Type: BAS • Class: Bathymetry • Survey #02270810)
- [Sheet: MILLERS FERRY LA - 10/24/2007](#) (Type: BAS • Class: Bathymetry • Survey #10240720)
- [Sheet: MILLERS FERRY LA - 8/7/2007](#) (Type: BAS • Class: Bathymetry • Survey #08070731)
- [Sheet: MILLERS FERRY LA - 5/30/2007](#) (Type: BAS • Class: Bathymetry • Survey #05300720)
- [Sheet: MILLERS FERRY LA - 4/10/2007](#) (Type: BAS • Class: Bathymetry • Survey #04100730)
- [Sheet: MILLERS FERRY LA - 4/12/2006](#) (Type: BAS • Class: Bathymetry • Survey #04120631)
- [Sheet: MILLERS FERRY LA - 5/24/2005](#) (Type: BAS • Class: Bathymetry • Survey #05240530)
- [Sheet: MILLERS FERRY LA - 5/26/1999](#) (Type: BAS • Class: Bathymetry • Survey #05269930)

← Current Survey

← Historical Surveys

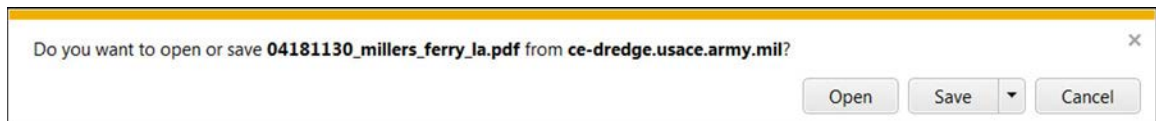
← Current Survey

← Historical Surveys

2. If you want to download a current survey, click (Download) to the right of the survey name.

If you want to download a historical survey, click its link.

A message box displays, asking if you want to open or save the survey file.



3. If you want to save the survey to your workstation without viewing it, click Save (or Save As).

If you want to open the survey to view it on-screen, click Open. The survey opens in Adobe Reader (or Acrobat Professional, depending on which application you have installed). After viewing the survey, save (if desired) and close the file.



4. Click the **X** (Close) icon on the Survey Downloader tab to close the Survey Downloader and return to the Black Warrior, Tombigbee, and Alabama Rivers GIS website.

Survey Downloader

Claiborne (CBN)

Detailed Bar Surveys (13)

Bar: MILLERS FERRY LA - 4/18/2011
Type: BAS • Class: Bathymetry • Survey #04181130

Historical Detailed Surveys:

- Bar: MILLERS FERRY LA - 9/23/2010 (Type: BAS • Class: Bathymetry • Survey #09231052)
- Bar: MILLERS FERRY LA - 3/9/2010 (Type: BAS • Class: Bathymetry • Survey #03091050)
- Bar: MILLERS FERRY LA - 6/29/2009 (Type: BAS • Class: Bathymetry • Survey #06290940)
- Bar: MILLERS FERRY LA - 6/19/2008 (Type: BAS • Class: Bathymetry • Survey #06190830)
- Bar: MILLERS FERRY LA - 2/27/2008 (Type: BAS • Class: Bathymetry • Survey #02270810)
- Bar: MILLERS FERRY LA - 10/24/2007 (Type: BAS • Class: Bathymetry • Survey #10240720)
- Bar: MILLERS FERRY LA - 8/7/2007 (Type: BAS • Class: Bathymetry • Survey #08070731)
- Bar: MILLERS FERRY LA - 5/30/2007 (Type: BAS • Class: Bathymetry • Survey #05300720)
- Bar: MILLERS FERRY LA - 4/10/2007 (Type: BAS • Class: Bathymetry • Survey #04100730)
- Bar: MILLERS FERRY LA - 4/12/2006 (Type: BAS • Class: Bathymetry • Survey #04120631)
- Bar: MILLERS FERRY LA - 5/24/2005 (Type: BAS • Class: Bathymetry • Survey #05240530)
- Bar: MILLERS FERRY LA - 6/26/1999 (Type: BAS • Class: Bathymetry • Survey #05269930)