

Modified Level D. The following equipment will be used for Level D-Modified protection:

- Permeable Tyvek, Kleenguard, or its equivalent (polycoated Tyvek for pressure washing)
- Latex boot covers
- Outer Nitrile, heavy work, or latex gloves
- Latex or lightweight nitrile gloves (inner)
- Steel-toed safety boots
- Safety glasses
- Faceshield when mixing grout
- Hard hat
- Hearing protection (when working near/adjacent to operating equipment).

Note: In addition to modified Level D PPE, the operator of high-pressure water jetting equipment shall wear metatarsal guards for foot protection, leg guards and a face shield.

Level C. Level C protection is not anticipated.

4.0 Site Monitoring

The environmental contaminants of concern were petroleum hydrocarbons. No significant concentrations were found during the investigation. The primary hazard during well abandonment activities is Portland cement while hydrating to grout the wells. Table 4-1 contains the action levels for real-time air monitoring at the sites.

Chemical. Air monitoring will be performed by the site safety and health officer or qualified task geologist during grouting of the wells. A calibrated combustible gas/oxygen indicator will be utilized to monitor the work areas and BZs to determine if any combustible/flammable oxygen levels may be present that would necessitate evacuation of the work area. Table 4-2 contains the air monitoring frequency and location for site monitoring at the work sites.

Table 4-1

**Action Levels
Monitoring Well Abandonment at Multiple Sites
Fort McClellan, Calhoun County, Alabama**

When in Level D Modified/D PPE

Analyte	Action Level ^a	Required Action ^a
Oxygen	≥ 20%, ≤23% < 20%, >23%	Normal operations. Stop work, evacuate work area.
Flammable vapors	≥ 10% LEL < 10% LEL	Stop work, evacuate work area. Normal operations.

When in Support Zone

Analyte	Action Level ^a	Required Action
Oxygen	≥ 20%, ≤23% < 20%, >23%	Evacuate support zone and re-establish perimeter of exclusion zone.
Flammable vapors	≥ 10% LEL < 10% LEL	Evacuate support zone and re-establish perimeter of exclusion zone.

^a Contact with the H&S manager must be made prior to continuance of work. The H&S manager may then initiate perimeter/integrated air sampling along with additional engineering controls.

No one is permitted to downgrade levels of PPE without authorization from the H&S manager.

Table 4-2

**Air Monitoring Frequency and Location
Monitoring Well Abandonment at Multiple Sites
Fort McClellan, Calhoun County, Alabama**

Work Activity	Instrument	Frequency	Location
Staging equipment	LEL/O ₂ Monitor	Initially for area	BZ of employees
Well Abandonment	LEL/O ₂ Monitor	Continuously	BZ of employees and/or work area

BZ = Breathing zone.

LEL/O₂ = Lower explosive level/oxygen.

5.0 Activity Hazard Analysis

The attached activity hazard analysis (Table 5-1) is provided for the following activities:

- Staging equipment
- Well abandonment
- High pressure water jetting.

All occupational injuries or illness shall be immediately reported and investigated in accordance with Shaw health and safety procedure HS020. Attachment 2 contains the Incident Reporting Management Procedure-Federal which was developed with HS020. Injuries that require emergency medical evaluation/treatment shall be cared for at Northeast Regional Medical Center, 400 East 10th Street, Anniston, Alabama. The telephone number is (256) 235- 5121. Directions to the hospital are provided in Figure 5-1.

For non life threatening injuries which may require medical treatment beyond onsite first aid the injured Shaw employee shall be transported by a Shaw site manager or SSHO to the nearest Health Resources occupational health facility. The nearest occupational clinic is Southern Family Practice and Occupational Medicine. The telephone number is (256) 236-9400. Directions to the clinic are provided in Figure 5-2.

Table 5-1

**Activity Hazard Analysis
Monitoring Well Abandonment at Multiple Sites
Fort McClellan, Calhoun County, Alabama**

(Page 1 of 8)

Activity	Potential Hazards	Recommended Controls
Staging equipment	Slip, trip, and fall hazards	<ul style="list-style-type: none"> • Determine best access route before transporting equipment. • Practice good housekeeping; keep work area picked up and clean as feasible. • Continually inspect the work area for slip, trip, and fall hazards. • Look before you step; ensure safe and secure footing.
	Heavy lifting	<ul style="list-style-type: none"> • Use proper lifting techniques. Lifts greater than 60 pounds require assistance or mechanical equipment.
	Falling objects	<ul style="list-style-type: none"> • Stay alert and clear of materials suspended overhead; wear hard hat and steel-toed boots.
	Flying debris, dirt, dust, etc.	<ul style="list-style-type: none"> • Wear safety glasses/goggles; ensure that eye wash is in proper working condition.
	Pinch points	<ul style="list-style-type: none"> • Keep hands, fingers, and feet clear of moving/suspended materials and equipment. • Beware of contact points. • Stay alert at all times!
	Cuts/bruises	<ul style="list-style-type: none"> • Use cotton or leather work gloves for material handling.
	Bees, spiders, and snakes	<ul style="list-style-type: none"> • Inspect work area carefully and avoid placing hands and feet into concealed areas.
	Ticks	<ul style="list-style-type: none"> • Wear light colored clothing (can see ticks better). • Mow vegetated and small brush areas. • Wear insect repellent. • Wear long sleeves and long pants. • Visually check oneself promptly and frequently after exiting the work area.
	Fire	<ul style="list-style-type: none"> • Fire extinguishers shall be suitably placed, distinctly marked, readily accessible, and maintained in a fully charged and operable condition.

Table 5-1

**Activity Hazard Analysis
Monitoring Well Abandonment at Multiple Sites
Fort McClellan, Calhoun County, Alabama**

(Page 2 of 8)

Activity	Potential Hazards	Recommended Controls
Staging equipment (continued)	Hazard communication	<ul style="list-style-type: none"> • Label all containers as to contents and dispose of properly. • Ensure Material Safety Data Sheets (MSDS) are available for hazardous chemicals used on site. • Employees will receive site-specific training to the SHP and SSHP.
	Noise	<ul style="list-style-type: none"> • Sound levels above 85 decibels (dBA) mandates hearing protection.
	Lighting	<ul style="list-style-type: none"> • Adequate lighting will be provided to ensure a safe working environment.
	UXO	<ul style="list-style-type: none"> • Employees shall not disturb any suspicious items, contact the Shaw site manager immediately. • Do not veer from MEC areas that have been cleared, keep on established roads and within assigned work areas.
	Poison ivy/oak/sumac	<ul style="list-style-type: none"> • Avoid plant areas if possible. • Wear long sleeves and long pants. • Promptly wash clothing separately that has contacted poisonous plants from non contaminated clothing. • Wash affected areas immediately with soap designed for poisonous resin removal and water.
	Heat rash	<ul style="list-style-type: none"> • Keep the skin clean and dry. • Change perspiration-soaked clothing, as necessary. • Bathe at end of work shift or day. • Apply powder to affected area.
	Heat cramps	<ul style="list-style-type: none"> • Drink plenty of cool fluids even when not thirsty. • Provide cool fluid for work crews. • Move victim to shaded, cool area.

Table 5-1

**Activity Hazard Analysis
Monitoring Well Abandonment at Multiple Sites
Fort McClellan, Calhoun County, Alabama**

(Page 3 of 8)

Activity	Potential Hazards	Recommended Controls
Staging equipment (continued)	Heat exhaustion	<ul style="list-style-type: none"> • Conduct physiological worker monitoring as needed (i.e., heart rate, oral temperature). • Set up work/rest periods. • Use the buddy system. • Allow workers time to acclimate. • Have ice packs available for use. • Take frequent breaks.
	Heat stroke	<ul style="list-style-type: none"> • Evaluate possibility of night work. • Perform physiological monitoring on workers during breaks. • Wear body cooling devices.
	Contact with moving equipment/vehicles	<ul style="list-style-type: none"> • Work area will be barricaded/demarcated. • Equipment will be laid out in an area free of traffic flow. • Barricades shall be used on or around work areas when it is necessary to prevent the inadvertent intrusion of pedestrian traffic. • Barriers shall be used to protect workers from vehicular traffic. • Barriers shall be used to guard excavations adjacent to streets or roadways. • Flagging shall be used for the short term (less than 24 hours) to identify hazards until proper barricades or barriers are provided. • Heavy equipment shall have backup alarms.
	Forklift operations	<ul style="list-style-type: none"> • Use qualified and trained forklift operators. • The operator shall not exceed the load capacity rating for the forklift. • The load capacity shall be clearly visible on the forklift. • Forklift operators shall inform their supervisor of any prescribed medication that they are taking that would impair their judgement.
	Portable electric tools	<ul style="list-style-type: none"> • Portable electric tools that are unsafe due to faulty plugs, damaged cords, or other reasons, shall be tagged (do not use) and removed from service. • Portable electric tools and all cord and plug connected equipment shall be protected by a ground fault circuit interrupter (GFCI) device. • Electrical tools shall be inspected daily prior to use.

Table 5-1

**Activity Hazard Analysis
Monitoring Well Abandonment at Multiple Sites
Fort McClellan, Calhoun County, Alabama**

(Page 4 of 8)

Activity	Potential Hazards	Recommended Controls
Staging equipment (continued)	Extension cords	<ul style="list-style-type: none"> • Extension cords that have faulty plugs, damaged insulation, or are unsafe in any way shall be removed from service. • Cords shall be protected from damage from sharp edges, projections, pinch points (doorways), and vehicular traffic. • Cords shall be suspended with a nonconductive support (rope, plastic ties, etc.). • Cords shall be designed for hard duty. • Cords shall be inspected daily.
	Lightning strikes	<ul style="list-style-type: none"> • Whenever possible, halt activities and take cover. • If outdoors, stay low to the ground. • Seek shelter in a building if possible. • Stay away from windows. • If available, crouch under a group of trees instead of one single tree. • Remain 6 feet away from tree trunk if seeking shelter beneath tree(s). • If in a group, keep 6 feet of distance between people.
	Thunderstorms, tornadoes	<ul style="list-style-type: none"> • Listen to radio or TV announcements for pending weather information. • Cease field activities during thunderstorm or tornado warnings. • Seek shelter. Do not try to outrun a tornado.
Well abandonment	Exposure to Grout	<ul style="list-style-type: none"> • Avoid skin contact with grout. • Position body upwind when hydrating Portland cement to grout wells. • Only essential personnel will be in the work area. • All personnel will follow good hygiene practices. No smoking, eating, drinking, etc. in the grout mixing, handling areas.
	Contact with rotating or reciprocating machine parts	<ul style="list-style-type: none"> • Use machine guards. • Utilize safe lockout procedures for maintenance work.
	Cut hazards	<ul style="list-style-type: none"> • Wear adequate hand protection.
	Hazard communication	<ul style="list-style-type: none"> • MSDSs shall be obtained for chemicals brought on site. • Label all containers as to contents and appropriate hazard warning. • Employees will receive site-specific training to the SHP and SSHP.
	Strains/sprains	<ul style="list-style-type: none"> • Use the proper tool for the job being performed. • Get assistance if needed. • Avoid twisting/turning while lifting materials, pulling on tools or hoses, and while moving equipment, etc. • Use proper lifting techniques and get help or heavy equipment assistance for lifts greater than 60 pounds.

Table 5-1

**Activity Hazard Analysis
Monitoring Well Abandonment at Multiple Sites
Fort McClellan, Calhoun County, Alabama**

(Page 5 of 8)

Activity	Potential Hazards	Recommended Controls
Well abandonment (continued)	Unattended worker	<ul style="list-style-type: none"> • Use the "buddy system" - visual contact will be maintained during well abandonment activities.
	Slip, trip, and fall hazards	<ul style="list-style-type: none"> • Practice good housekeeping; keep work area picked up and clean as feasible. • Route all hoses out of walking pathways if feasible. • Continually inspect the work area for slip, trip, and fall hazards.
	Faulty or damaged equipment being utilized to perform work	<ul style="list-style-type: none"> • All machinery or mechanized equipment will be inspected by a competent mechanic and be certified to be in safe operating condition. • Equipment will be inspected before being put to use and at the beginning of each shift. • Faulty/unsafe equipment will be tagged and if possible locked out.
	Inexperienced operator	<ul style="list-style-type: none"> • Machinery and mechanized equipment shall be operated only by designated qualified personnel. • Operators shall inform their supervisor(s) of any prescribed medication that they are taking that would impair their judgment.
	Pinch points	<ul style="list-style-type: none"> • Keep feet and hands clear of moving/suspended materials and equipment. • Stay alert at all times!
	Fire	<ul style="list-style-type: none"> • Mechanized equipment shall be shut down prior to and during fueling operations. • Have fire extinguishers inspected and readily available. • Perform air monitoring for flammable atmospheres and oxygen deficiency while grouting wells.
	Noise	<ul style="list-style-type: none"> • Hearing protection is mandatory above 85 dBA.
	Bees, spiders, and snakes	<ul style="list-style-type: none"> • Workers shall inspect the work area carefully and avoid placing hands and feet into concealed areas. • Evaluate need for sensitive workers to have prescribed antibiotic or medicine to combat onset of symptoms.
	Poison ivy/oak/sumac	<ul style="list-style-type: none"> • Avoid plant areas if possible. • Wear long sleeves and long pants. • Promptly wash clothing separately that has contacted poisonous plants from non contaminated clothing. • Wash affected areas immediately with soap designed for poisonous resin removal and water.

Table 5-1

**Activity Hazard Analysis
Monitoring Well Abandonment at Multiple Sites
Fort McClellan, Calhoun County, Alabama**

(Page 6 of 8)

Activity	Potential Hazards	Recommended Controls
Well Abandonment (Continued)	Cold stress	<ul style="list-style-type: none"> • Workers should wear insulated clothing when temperatures drop below 40 degrees Fahrenheit (°F). • Drink warm beverages on breaks. Refrain from drinking caffeinated beverages. • Remove wet clothing promptly. • Take breaks in warm areas. • Reduce work periods as necessary. • Layer work clothing.
	Access/egress hazards	<ul style="list-style-type: none"> • Utilize good housekeeping practices. • Keep aiseways, pathways, and work areas free of obstruction. • Clean ice or snow off of walkways or work stations. • Use appropriate footwear for the task assigned.
	Heat rash	<ul style="list-style-type: none"> • Keep the skin clean and dry. • Change perspiration-soaked clothing, as necessary. • Bathe at end of work shift or day. • Apply powder to affected area.
	Heat cramps	<ul style="list-style-type: none"> • Drink plenty of cool fluids even when not thirsty. • Provide cool fluid for work crews. • Move victim to shaded, cool area.
	Heat exhaustion	<ul style="list-style-type: none"> • Conduct physiological worker monitoring as needed (i.e., heart rate, oral temperature). • Set up work/rest periods. • Use the buddy system. • Allow workers time to acclimate. • Have ice packs available for use. • Take frequent breaks.
	Heat stroke	<ul style="list-style-type: none"> • Evaluate possibility of night work. • Perform physiological monitoring on workers during breaks. • Wear body cooling devices.

Table 5-1

**Activity Hazard Analysis
Monitoring Well Abandonment at Multiple Sites
Fort McClellan, Calhoun County, Alabama**

(Page 7 of 8)

Activity	Potential Hazards	Recommended Controls
Well Abandonment (Continued)	Lightning strikes	<ul style="list-style-type: none"> • Whenever possible, halt activities and take cover. • If outdoors, stay low to the ground. • Limit the body surface area that is in contact with the ground (i.e., kneeling on one knee is better than laying on the ground). • Seek shelter in a building if possible. • Stay away from windows. • If available, crouch under a group of trees instead of one single tree. • If in a group, keep 6 feet of distance between people.
	Thunderstorms, tornadoes	<ul style="list-style-type: none"> • Listen to radio or TV announcements for pending weather information. • Cease field activities during thunderstorms or tornado warnings. • Seek shelter. Do not try to outrun a tornado.
Material storage	Flammable and combustible liquids	<ul style="list-style-type: none"> • Store in NO SMOKING AREA. • Fire extinguisher readily available. • Transfer only when properly grounded and bonded.
High-pressure water jetting operations	Heavy lifting	<ul style="list-style-type: none"> • Use proper lifting techniques. • Lifts greater than 60 pounds require assistance or mechanical equipment; size-up the lift.
	Slip, trip, and fall hazards	<ul style="list-style-type: none"> • Good housekeeping shall be implemented. • The work area shall be kept clean as feasible. • Inspect the work area for slip, trip, and fall hazards.
	Fueling	<ul style="list-style-type: none"> • Only approved safety cans shall be used to store fuel. • Do not refuel equipment while it is operating. • Fire extinguishers shall be suitably placed, distinctly marked, readily accessible, and maintained in a fully charged and operable condition.
	Faulty or damaged equipment	<ul style="list-style-type: none"> • Equipment shall be inspected before being placed into service and at the beginning of each shift. • Preventive maintenance procedures recommended by the manufacturer shall be followed. • A lockout/tagout procedure shall be used for equipment found to be faulty or undergoing maintenance.

Table 5-1

**Activity Hazard Analysis
Monitoring Well Abandonment at Multiple Sites
Fort McClellan, Calhoun County, Alabama**

(Page 8 of 8)

Activity	Potential Hazards	Recommended Controls
High-pressure water jetting operations (continued)	High-pressure water	<ul style="list-style-type: none"> • Jetting gun operator must wear appropriate PPE including hard hat, impact-resistant safety glasses with side shields, water-resistant clothing, metatarsal guards for feet and legs, and hearing protection (if appropriate). • One standby person shall be available within the vicinity of the pump during jetting operation. • The work area shall be isolated and adequate barriers will be used to warn other site personnel.
	Unqualified operators	<ul style="list-style-type: none"> • Only qualified and trained personnel are permitted to operate machinery and mechanized equipment associated with water jet cutting and cleaning.
	Out of control equipment	<ul style="list-style-type: none"> • No machinery or equipment is permitted to run unattended. • Machinery or equipment will not be operated in a manner that will endanger persons or property nor will the safe operating speeds or loads be exceeded.
	Noise	<ul style="list-style-type: none"> • Sound levels above 85 dBA mandates hearing protection by nearby site personnel.
	Activation during repairs	<ul style="list-style-type: none"> • All machinery or equipment will be shut down and positive means taken to prevent its operation while repairs or manual lubrications are being done.
	Pinch points	<ul style="list-style-type: none"> • Keep feet and hands clear of moving/suspended materials and equipment. • Stay alert and clear of materials suspended
	Falling objects	<ul style="list-style-type: none"> • Hard hats are required by site personnel. • Stay alert and clear of material suspended overhead.
	Flying debris	<ul style="list-style-type: none"> • Impact-resistant safety glasses with side shields are required.
	Contact with potentially contaminated materials	<ul style="list-style-type: none"> • All site personnel will wear the appropriate PPE.

FIGURE 5-1 Well Abandonment Multiple Sites Hospital Route Map

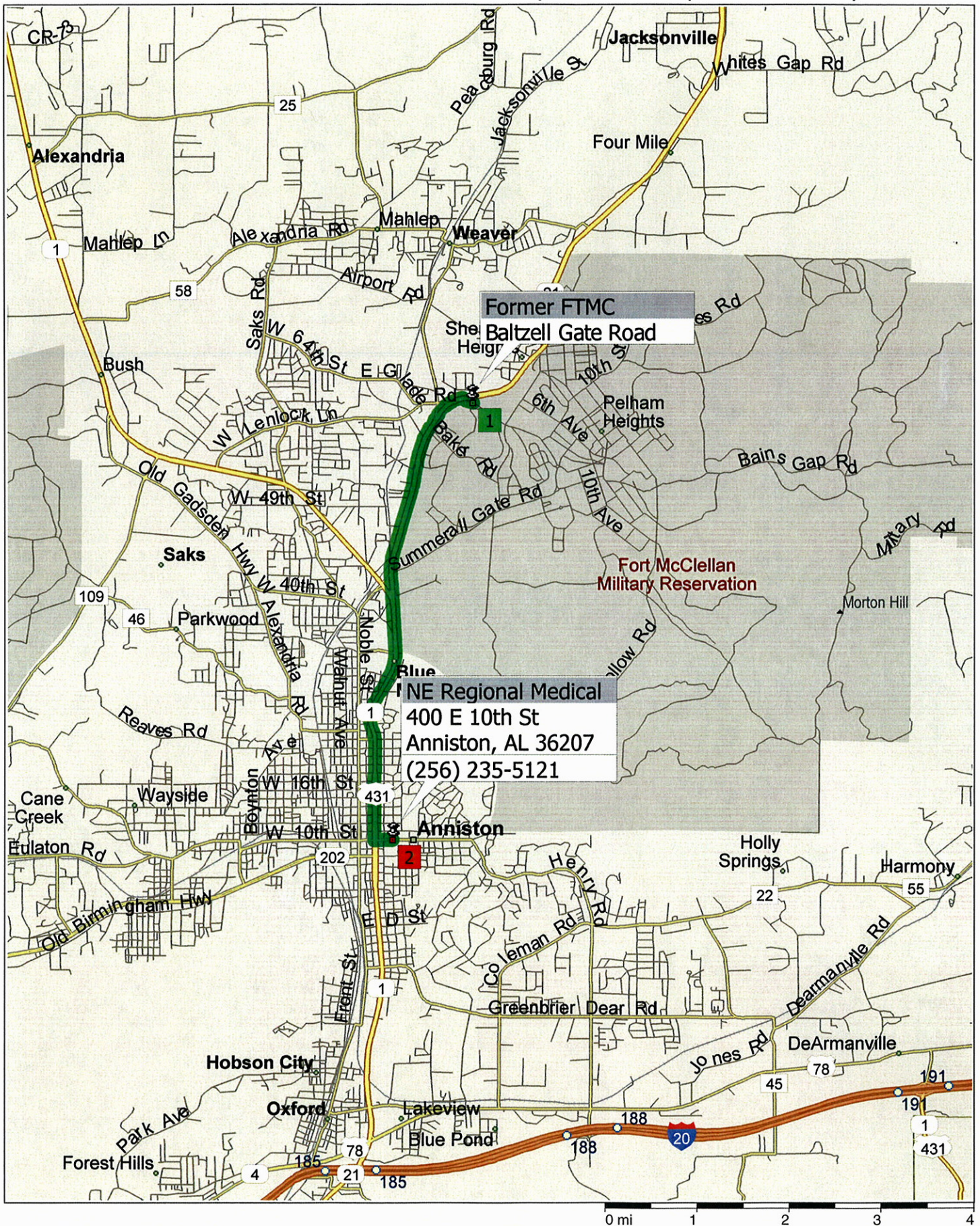


FIGURE 5-1 Well Abandonment Multiple Sites Hospital Route Map

5.4 miles; 8 minutes

9:00 AM	0.0 mi	1 Depart Former FTMC on Baltzell Gate Rd (West) for 0.1 mi
9:00 AM	0.1 mi	Turn LEFT (West) onto SR-21 [Jacksonville State University Hwy] for 2.5 mi
9:03 AM	2.7 mi	Merge onto US-431 [SR-1] for 2.6 mi
9:07 AM	5.2 mi	Turn LEFT (East) onto E 10th St for 0.2 mi
9:08 AM	5.4 mi	2 Arrive NE Regional Medical [400 E 10th St, Anniston, AL 36207]

FIGURE 5-2 Well Abandonment Multiple Sites Clinic Route Map

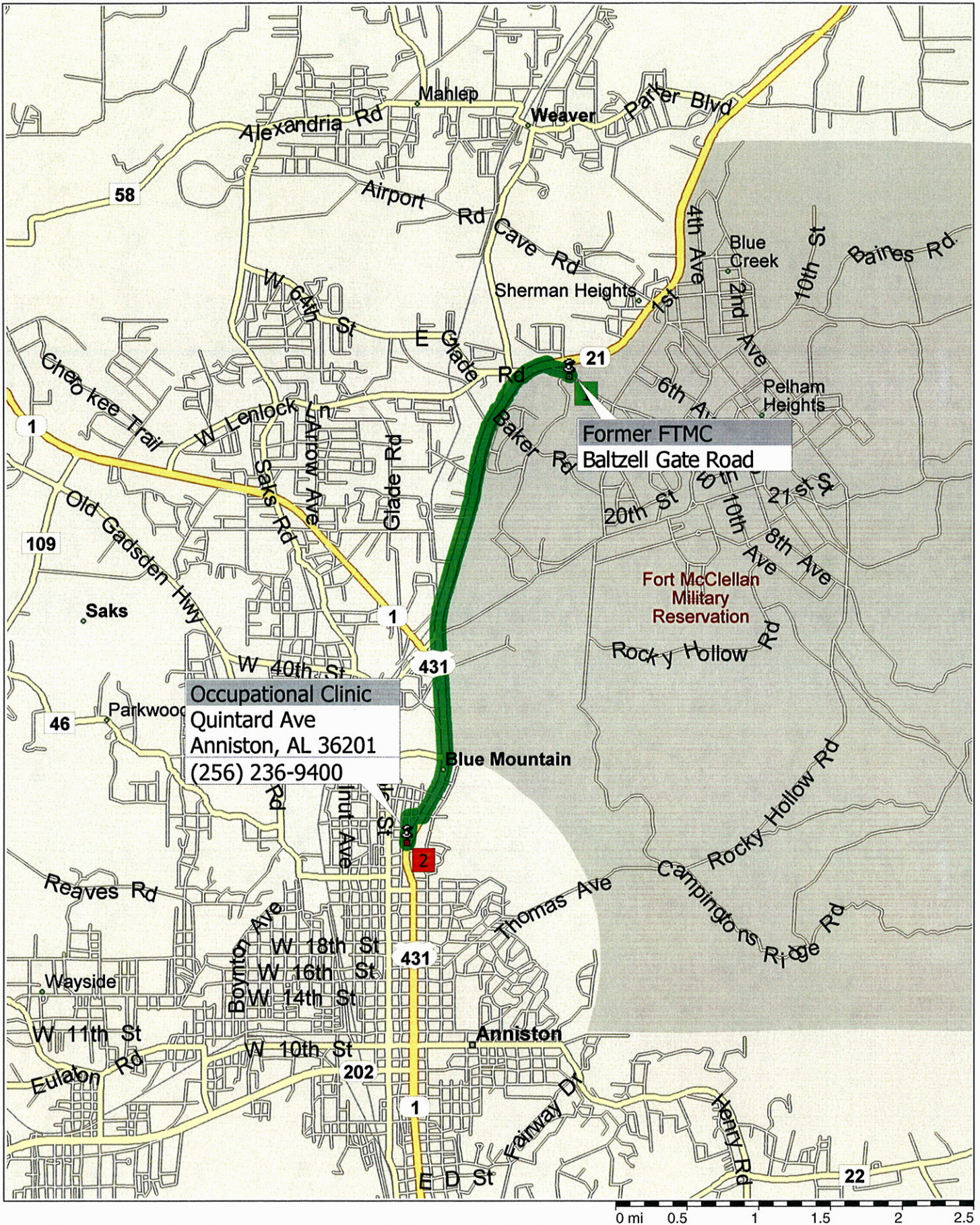


FIGURE 5-2 Well Abandonment Multiple Sites Clinic Route Map

3.9 miles; 7 minutes

9:00 AM	0.0 mi	1 Depart Former FTMC on Baltzell Gate Rd (West) for 0.2 mi
9:00 AM	0.2 mi	Turn LEFT (West) onto SR-21 [Jacksonville State University Hwy] for 2.5 mi
9:03 AM	2.7 mi	Merge onto US-431 [SR-1] for 0.9 mi
9:05 AM	3.6 mi	Turn RIGHT (West) onto E 28th St for 153 yds
9:06 AM	3.7 mi	Turn LEFT (South) onto Quintard Ave for 0.2 mi
9:07 AM	3.9 mi	2 Arrive Occupational Clinic [Quintard Ave, Anniston, AL 36201]

ATTACHMENT 1

**EVALUATING OE/UXO/CWM HAZARDS
IN SUPPORT OF HTRW ACTIVITIES**

Site Name: Well Abandonments

Job Number: 796887

Date: 1-Jun-06

3. For sites where the manufacturing, testing, storage, or disposal of CWM is suspected:	Yes	No
Is there evidence that the CWM is/was containerized in potentially unexploded ordnance:	<input type="checkbox"/>	<input type="checkbox"/>
Is there evidence that the CWM is/was containerized in nonexplosive containers:	<input type="checkbox"/>	<input type="checkbox"/>
Is there evidence that the CWM is open to the environment (i.e., in an open container or free liquid/solid in the soil/water):	<input type="checkbox"/>	<input type="checkbox"/>
Is there evidence that the CWM hazard has been removed from the site or that the site has been decontaminated:	<input type="checkbox"/>	<input type="checkbox"/>
Has the site been previously monitored or sampled for chemical agent or agent breakdown products:	<input type="checkbox"/>	<input type="checkbox"/>
For any "YES" above, was the agent or breakdown product identified?	<input type="checkbox"/>	<input type="checkbox"/>

For any "Yes", list types of agent (mustard, lewisite, etc.) and the form (in ordnance, in drum, etc.) the CWM is expected to be found (or state "unknown"):

No CWM was identified.

List agent breakdown products identified:

No CWM was identified.

4. Defining the Potential for the Presence of CWM:	Agent Monitoring Requirements for Site Activities:
<p>4a. High Presence Potential – Definition: CWM is known or highly suspected to be present at the site in a condition (within ordnance and/or nonexplosive container, or in an uncontainerized form in sufficient volume that weathering of the product has not rendered it harmless) that will cause potential harm to personnel if it is encountered.</p>	<p>Mandatory personal and perimeter air monitoring using the DAAMS, MINICAMS, and RTAP collection/analysis methods with off-site surety laboratory confirmation of all environmental samples. Specific monitoring criteria (equipment types and sampling station placement, percentage of personnel monitored, etc.) to be established in the Site Specific Safety and Health Plan (SSHP).</p>
<p>4b. Moderate Presence Potential - Definition: CWM is suspected to have been present at the site, but has been previously removed and/or decontaminated, or has been open to the environment such that it is expected to have degraded and been rendered harmless.</p>	<p>The need for personal and perimeter air monitoring using the DAAMS, MINICAMS, and RTAP collection/analysis methods with off-site surety laboratory confirmation of all environmental samples will be reviewed on a site-by-site basis. Specific monitoring criteria (equipment types and sampling station placement, percentage of personnel monitored, etc.) to be established in the Site Specific Safety and Health Plan (SSHP).</p>
<p>4c. Low Presence Potential – Definition: No indications that CWM will be present in quantity or reactivity (in munitions, projectiles, drums, etc.).</p>	<p>No specific personal or area monitoring for chemical agents required beyond what is specified in the SHP.</p>

Continue to page 3 of 4 -

Site Name: Well Abandonments

Job Number: 796887

Date: 1-Jun-06

Based on the information available for this site, including information gathered during completion of this form, the potential for CWM to be present at this site, as defined above, is expected to be: **LOW**

Exceptions/Explanations: The sites fall outside any previously identified UXO area. (additional space for notes and explanations on page 4)



5. Based on the information provided in questions 1 through 5, above, the following guidelines will be used for establishing PPE requirements for activities to be performed at this site; Specific details are provided in the SSHP:

<p>5a. High Exposure Potential - High exposure potential is determined by evaluating the potential presence of CWM in conjunction with the task(s) to be performed, as well as the specific location and duration of the task(s).</p>	<p>Subject to review by the Shaw CIH, PPE for all personnel in the exclusion zone at a site identified as having a "High Exposure Potential" will be Level B (supplied air) or Level C (full-face respirator with HEPA/Acid Gas/OV cartridges w/ emergency egress hood) and chemically resistant coveralls. Specific PPE requirements are in the SSHP for this site.</p>
<p>5b. Moderate Exposure Potential - Moderate exposure potential is determined by evaluating the potential presence of CWM in conjunction with the task(s) to be performed, as well as the specific location and duration of the task(s).</p>	<p>Subject to review by the Shaw CIH, PPE for all personnel in the exclusion zone at a site identified as having a "Moderate Exposure Potential" will be Modified Level D (disposable coveralls and emergency egress hood) carried by all personnel. Specific PPE requirements are in the SSHP for this site.</p>
<p>5c. Low Exposure Potential - Low exposure potential is determined by evaluating the potential presence of CWM in conjunction with the task(s) to be performed, as well as the specific location and duration of the task(s).</p>	<p>Subject to review by the Shaw CIH, no additional PPE requirements above those stated in the SSHP are needed for sites identified as having "Low Exposure Potential." Specific PPE requirements are in the SSHP for this site.</p>

Based on all available information, the exposure potential at this site is considered to be: **LOW**

Exceptions/Explanations: Shaw personnel will closely observe the area during well abandonment activities and will leave the site and notify UXO support if suspect items are found.

Review Signatures:

Shaw UXO Technical Manager  Date 2 JUN 06 Shaw H&S Specialist  Date: 7/5/06

Site Name: Well Abandonments

Job Number: 796887

Date: 1-Jun-06

Additional Notes and Explanations:

In accordance with Alabama Department of Environmental Management (ADEM) guidelines and the Installation-Wide Work Plan, Shaw under contract to the U.S. Army Corps of Engineers (USACE)-Mobile District will abandon 28 residuum groundwater monitoring wells located at FTMC. The wells requiring abandonment are located at the following sites:

1. UST, Telephone Exchange Building 251, Parcel 3(7) - included as part of the SI for the GSA Warehouse Area completed by Shaw in 2001-2002.
2. UST, Recreation Building 503, Parcel 9(7) - UST Closure Assessment completed by Shaw in 1999-2000.
3. UST, Ammunition Supply Point Building 4400, Parcel 31(3) - UST Closure Assessment completed by Shaw in 1999-2000.
4. UST, Bivouac Area Building B-44, Parcel 38(3) - UST Closure Assessment completed by Shaw in 1999-2000.
5. UST, Dental Clinic Building 1929, Parcel 49(3) - UST Closure Assessment completed by Shaw in 1999-2000.
6. UST, Community Club Building 3212, Parcel 56(3) - UST Closure Assessment completed by Shaw in 1999-2000.
7. UST, Recreation Center Building 3213, Parcel 57(3) - UST Closure Assessment completed by Shaw in 1999-2000.
8. UST, Chapel Building 3293, Parcel 58(3) - UST Closure Assessment completed by Shaw in 1999-2000.
9. UST, Women's Army Corps Museum Building 1077, Parcel 167(3) - UST Closure Assessment completed by Shaw in 1999-2000.
10. UST, Building 3691, Parcel 506(3) - UST Closure Assessment completed by Shaw in 1999-2000.
11. Former Motor Pool 800, Parcels 164(3), 11(3), 12(3) and 68(3) - SI completed by Shaw in 2001.
12. Former Motor Pool Area 1800\1900, Parcels 145(3) and 52(3) - SI completed by Shaw in 2001.
13. Ground Scar South of Building 3134, Parcel 153(3) - SI completed by Shaw in 2001.
14. Ground Scar Near the Ammunition Supply Point, Parcel 156(3) - SI completed by Shaw in 2001.
15. Ground Scar South of the Autocraft Shop, Parcel 157(3) - SI completed by Shaw in 2002.

Because these sites are outside known UXO areas and have been previously investigated, the presence of unexploded ordnance (UXO) is highly unlikely. Therefore, Shaw personnel will observe the area during well abandonment activities and leave the site and notify UXO support if suspect items are found.

ATTACHMENT 2

INCIDENT REPORTING MANAGEMENT PROCEDURE-FEDERAL

Incident Reporting and Management Procedure - Federal

Action	Who? When?	Under what circumstances?	How?	Notes:
1. Notify Supervisor for all incidents (no matter how minor)	Injured person, first person recognizing incident, driver/passenger, or employee causing damage <i>Immediately</i>	All incidents no matter how minor	In person or by telephone	
2. For life-threatening injuries/illnesses - contact local emergency personnel	Site Supervisor <i>Immediately (concurrently with next step if injury or illness)</i>	In case of serious injury or illness requiring off-site medical care	Via ambulance	Site Supervisor or Site Safety Officer must immediately go to emergency care facility.
For non life-threatening injuries/illnesses - transport injured person to doctor at an occupational medical facility	Site Supervisor <i>Immediately (concurrently with next step if injury or illness)</i>		Via vehicle	Site Supervisor or Site Safety Officer must transport and stay with injured person until released from care
For vehicle accidents – make scene safe, notify police, aid injured parties	Driver/passenger <i>Immediately</i>			
For equipment/property damage - make scene safe, prevent further damage or injuries	Employee causing damage <i>Immediately</i>			
3. Notify Health Resources (for injuries/illnesses to Shaw employees only)	Site Supervisor <i>Immediately, prior to transporting the injured employee, unless injuries are life threatening</i>	<ul style="list-style-type: none"> ◆ Serious injury requiring off-site medical care ◆ If employee states that he/she has been exposed to any chemical or biological substance 	800-350-4511 Note: Outside Continental US call 781-935-8581	<ul style="list-style-type: none"> ◆ Not required for temporary agency and contract labor ◆ Provide name of injured employee, name and phone # of treating medical facility, description of the incident ◆ Health Resources will help with medical facility coordination and follow-up care
4. Notify Regional/Program H&S Manager	Site Supervisor <i>Immediately (concurrently with providing transportation to occupational medical facility or EMS transport to hospital)</i>	All incidents	See Federal Incident Notification and Communication Contact List (attached)	<ul style="list-style-type: none"> ◆ Contact should be made prior to sending the individual for medical care ◆ Regional/Program H&S Manager will notify Bob Brooks as appropriate

Incident Reporting and Management Procedure – Federal (continued)

Action	Who? When?	Under what circumstances?	How?	Notes:
5. Notify Shaw Notification Hotline/Help Desk	Site Supervisor <i>As soon as possible. Prior to sending an individual for medical treatment</i>	<ul style="list-style-type: none"> ◆ Illness and/or injury (doctors cases and above) ◆ Property damage (damage > \$2,500.00) ◆ Vehicle accidents (All) ◆ Criminal activity (i.e. bomb threat, theft) ◆ Natural disaster (all) ◆ Explosion and/or fires (damage > \$2,500.00 or result in injury) ◆ Environmental spills/releases (incidents that requires regulatory notification or have an offsite impact) ◆ Regulatory agency visit ◆ Fatalities 	Shaw Notification Hotline/Help Desk Phone Number 866-299-3445 Note: Outside the Continental US call 225-215-5056	
6. Complete forms: <i>Injuries and illnesses</i> <ul style="list-style-type: none"> ◆ Authorization for Release of Protected Medical Information ◆ Authorization for Treatment of Occupational Injury/Illness ◆ Return-To-Work Examination Form <p><i>and</i> fax to Health Resources</p> <p><i>and</i> fax to Loss Prevention Manager (Casey Parker)</p>	Injured employee and medical facility personnel (Site Supervisor is responsible for verifying forms are completed) <i>Prior to leaving medical facility</i>	<ul style="list-style-type: none"> ◆ Serious injury requiring off-site medical care ◆ If employee states that he/she has been exposed to any chemical or biological substance 	Fax to Health Resources at 800-853-2641 Fax to Loss Prevention Manager (Casey Parker) at 225-987-3080)	Site Supervisor or Site Safety Officer must take these forms with him/her to occupational medical facility or hospital (Contained in HS 020)
7. Call Project Manager and notify of incident	Site Supervisor <i>As soon as reasonably possible</i>			Project Manager will report incident to upper levels of Operations/Business Line Management

Incident Reporting and Management Procedure – Federal (continued)

Action	Who? When?	Under what circumstances?	How?	Notes:
8. Call back Regional/Program H&S Manager to report on status of <i>injured/ill employee</i>	Site Supervisor <i>Prior to employee leaving medical facility</i>	All injuries and illnesses requiring off-site medical care	See Federal Incident Notification and Communication Contact List (attached)	
9. Complete forms: <i>OSHA Recordable Cases</i> Supervisor's Employee Injury/Illness Report Form Injured Employee Statement Witness Statement Form(s) <i>First Aid Cases</i> Supervisor's Employee Injury/Illness Report Injured Employee Statement Witness Statement Form(s) Fax completed forms to Shaw Corporate Claims and Regional/Program H&S Manager and Health Resources.	<ul style="list-style-type: none"> ◆ Site Supervisor ◆ Witnesses <i>As soon as possible – no later than 24 hours</i>	All injuries, illnesses, and first aid cases	Shaw Corporate Claims Department Fax (225-932-2636) Health Resources Fax 800-853-2641 See Federal Incident Notification and Communication Contact List (attached)	Site Supervisor should have these forms with him/her at all times (Contained in HS 020)
10. Complete forms: <i>Chargeable Vehicle Accidents</i> Vehicle Accident Report Witness Statement Form(s) Driving Record Certification (Procedure HS800) <i>Non-Chargeable Vehicle Accidents</i> Vehicle Accident Report Witness Statement Form(s) <i>Equipment, Property Damage and General Liability Incidents</i> Equipment, Property Damage and General Liability Loss Report Witness Statement Form(s) Fax completed forms to Shaw Corporate Claims and Regional/Program H&S Manager.	<ul style="list-style-type: none"> ◆ Site Lead / Supervisor ◆ Witnesses <i>As soon as possible – no later than 24 hours</i>	All vehicle accidents and /or all property damage	Shaw Corporate Claims Department (225-932-2636) See Federal Incident Notification and Communication Contact List (attached)	Supervisor should have these forms with him/her at all times (Contained in HS 020)

Incident Reporting and Management Procedure – Federal (continued)

Action	Who? When?	Under what circumstances?	How?	Notes:
<p>11. Complete forms:</p> <p>OSHA Recordable Cases Incident Investigation Report</p> <p>First Aid Cases Incident Investigation Report</p> <p>Chargeable Vehicle Accidents Incident Investigation Report</p> <p>Non-Chargeable Vehicle Accidents Incident Investigation Report</p> <p>Equipment, Property Damage and General Liability Incidents Incident Investigation Report</p> <p>Near Miss Incident Investigation Report</p> <p>Fax completed forms to Regional/Program H&S Manager</p>	<p>Site Supervisor <i>As soon as possible – no later than 72 hours of incident</i></p>		<p>Shaw Corporate Claims Department (225-932-2636)</p> <p>See Federal Incident Notification and Communication Contact List (attached)</p>	<p>Supervisor should have these forms with him/her at all times (Contained in HS 020)</p>
<p>12. Perform "Accident Review Board" (ARB) and fax to Regional/Program H&S Manager.</p>	<p>Site Supervisor/Project Manager <i>Within 10 days of incident</i></p>	<p>OSHA Recordable Cases</p> <p>Chargeable Vehicle Accidents</p>		<p>ARB must include: Regional Manager, Project Manager, Employee's Direct Supervisor, Regional/Program H&S Manager, and Employee(s) involved in the incident. Lost time injuries will require Bill Winkler and Bob Brooks.</p>

FEDERAL INCIDENT NOTIFICATION AND COMMUNICATION CONTACT LIST

Project Number: 796887 Project: FTMC Office: Knoxville Field Office Facility Location: Fort McClellan, Calhoun County, AL

Name	Phone Number(s)	Fax Number	E-mail
Shaw Notification Hotline / Helpdesk	866-299-3445 225-215-5056 (Outside Continental US)	N/A	N/A
Health Resources	800-350-4511	800-853-2641	
Shaw Corporate Claims Department		225-932-2636	
Program/Project H&S Manager – Doug Russell	865-692-3584 (office) / 865-414-9545 (cell)	865-690-3626	winston.russell@shawgrp.com
Northeast Region H&S Manager - Joe Hoyt	804-337-6982	540-967-9784	joseph.hoyt@shawgrp.com
Southeast Region H&S Manager - Doug Russell	865-692-3584	865-690-3626	winston.russell@shawgrp.com
Central Region H&S Manager - Jim Joice	419-424-4960/ 888-415-6920 (pager)	419-425-6039	james.joice@shawgrp.com
Mountain Region H&S Manager - Pam Moore	303-722-1606	303-722-6695	pamela.moore@shawgrp.com
Southwest Region H&S Manager - Wayne Watson	281-368-4516	281-368-4436	wayne.watson@shawgrp.com
West/Pacific Region H&S Manager - Fred Mlakar	949-660-5413	949-474-8309	fred.mlakar@shawgrp.com
Air Force H&S Manager - Jim Joice	419-424-4960/ 888-415-6920 (pager)	419-425-6039	james.joice@shawgrp.com
Civilian Agencies H&S Manager - Alison Harwood	706-265-4589	706-265-4589	alison.harwood@shawgrp.com
DOE/Science & Technologies H&S Manager - Warren Houseman	412-858-3917	412-858-3976	warren.houseman@shawgrp.com
Infrastructure H&S Manager - Andrew Johnson	513-782-4972	513-782-4807	andrew.johnson@shawgrp.com
Federal H&S Director - Bob Brooks	732-346-2910 (office) / 908-217-5124 (cell)	732-346-2901	robert.brooks@shawgrp.com
Project Manager – Steven Moran	865-694-7361	865-690-3626	steve.g.moran@shawgrp.com
Program Manager/ROM – Bob Culbertson	865-694-4702 (office) / 865-717-3293 (cell)	865-690-3626	bob.culbertson@shawgrp.com
Corporate H&S Coordinator (Scott Reily)	225-987-7228 (office) / 225-229-4390 (cell)	225-987-3413	scott.reily@shawgrp.com
Loss Prevention Manager (Casey Parker)	225-932-2763 (office) / 225-405-1246 (cell)	225-987-3080	casey.parker@shawgrp.com
Shaw E&I Health & Safety Director (Troy Allen)	225-932-2579 (office) / 225-229-1759 (cell)	225-987-3454	troy.allen@shawgrp.com

Note: Notifications to operations chain will be verbal and as soon as reasonably possible, but no later than 24-hours following the incident.