

February 28, 2017

Melissa L. Shirley, P.E.
Contracting Officer Representative
U.S. Army Corps of Engineers, Mobile District
109 St. Joseph Street
Mobile, AL 36602

**Re: MEC Safety Support Letter Report, Response Event 8 (FINAL), Choccolocco
Corridor Ranges
Environmental Remediation Services at Four Sites, Fort McClellan, Anniston, AL
Contract: W912DY-10-D-0023, Task Order No. CK01
HGL Project Number: H10501**

Dear Ms. Shirley:

HydroGeoLogic, Inc. (HGL) is pleased to submit this letter report documenting the findings for the eighth Munitions and Explosives of Concern (MEC) Safety Support response event at the Choccolocco Corridor Ranges (CCR) site for the above-referenced project. This documentation supports Project Milestone 116.03 as described in the PMP/QASP and project schedule, and will serve as backup for invoicing purposes.

Activities and Operations Performed

During the conduct of the remedial activities at the subject project site, HGL's field team identified what appeared to be two MPPEH items at CCR (see Attachment 1 for photos and Attachment 2 for locations). HGL's SSHO established a cordon around the areas and all project personnel were instructed to keep out of the affected areas. A photo was provided to the UXO staff assigned to respond to the project location. On January 10, 2017, HGL's lead Senior UXO Supervisor (SUXOS), Mr. Neil Feist, and the UXO Quality Control Specialist (UXOQCS), Mr. Scott Schroepfer responded to Fort McClellan in accordance with the MEC Safety Support Work Plan to assess the items. Upon arrival and initial inspection, the items were determined to be components of expended ground illumination signal (slap flare). The UXO personnel conducted inspection/certification of the item in accordance with EM 385-1-97 and the MEC Safety Support Work Plan.

MEC and MC Removal Action/Remedial Action Results

The UXO staff placed the MDAS in the drum with a numbered seal and locked it inside the conex at the project office location. Upon completion of field construction activities at Fort McClellan, the SUXOS and UXOQCS will mobilize to the site to prepare a chain of custody and DD Form 1348-1a certifying and verifying all items, and any future finds as MDAS. The MDAS drum will then be manifested and shipped to our MDAS vendor Demil Metals for final disposition and smelting. Disposition documentation, including chain of custody, DD Form 1348-1a and the letter certifying final disposition will be provided at that time.

QC Activities and Results

Independent inspections were conducted of the items. Final QC verification will be conducted prior to shipment.

QA Activities and Results

Not applicable for this response action.

MC Sampling Activities and Results

Not applicable for this response action.

Exposure Data

Hours worked: 16 hours.

Lost workday accidents: 0

Lost workdays due to on-the-job accidents: 0

Property damage accidents with property loss value \$2000 or greater: 0

Please call or email me at (210) 477-2215, dreasons@hgl.com should you have any questions or comments concerning this document.

Sincerely,



David S. Reasons, PMP

Project Manager

Attachments:

1. Photographs of Expended Slap Flares
2. Location Map of Items

cc: Neil Feist, HydroGeoLogic, Inc.
Michael Forsyth, HydroGeoLogic, Inc.
Linda Bookout, USACE Mobile
Michele Johnson, USACE Mobile
Chad McLeod, USACE Anniston Resident Office
Scott Bolton, FTMC Army Transition Force
Lisa Holstein, FTMC Army Transition Force
Bill Shanks, FTMC Army Transition Force
Emery Hoyle, US Fish and Wildlife Service
Brandi Little, Alabama Department of Environmental Management

ATTACHMENT 1 - PHOTOGRAPHS

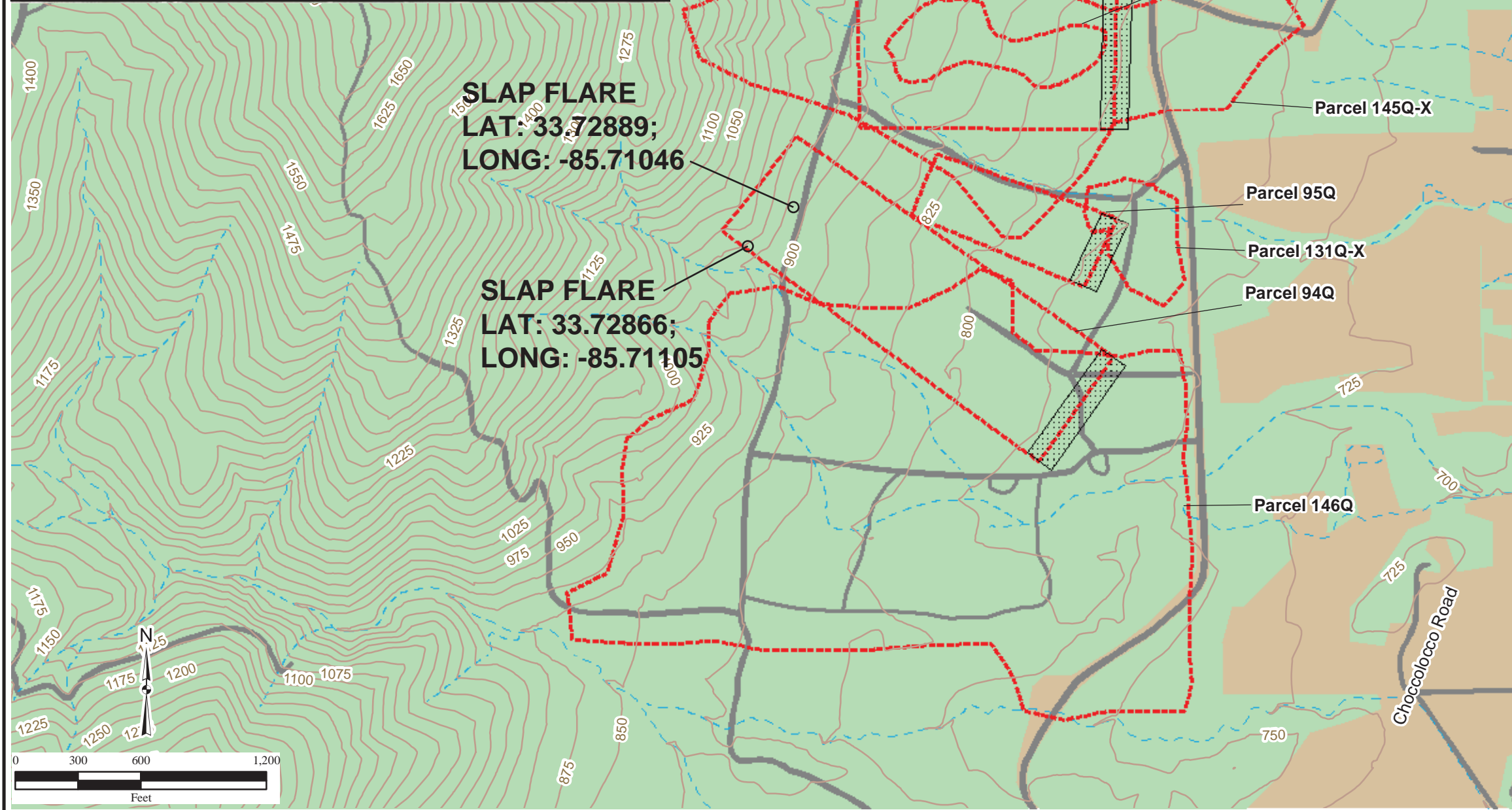
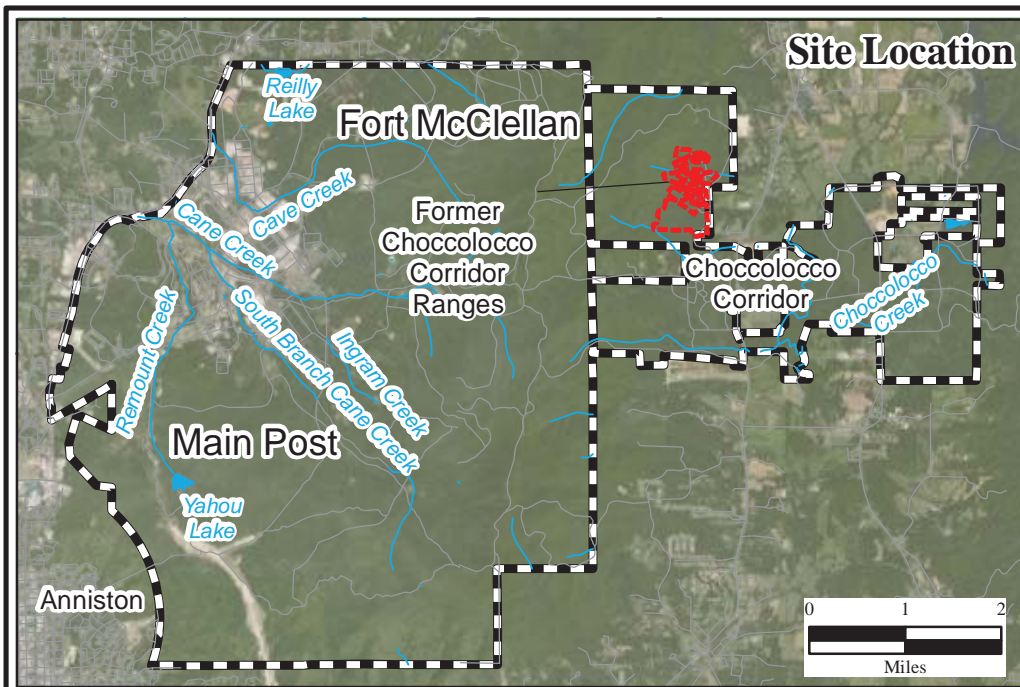


Expended Signal, Illumination, Ground (Slap Flare) components

Attachment 2 Location of Additional Items MEC Safety Support Response 8 Choccolocco Corridor Ranges Fort McClellan, AL

Legend

- Surface Drainage Feature (dashed where intermittent)
- Topographic Contour (25 foot interval)
- Road
- Firing Line
- Wooded
- Not Wooded
- Parcel



\\Gst-srv-01\HGLGIS\Ft_McClellan\FourSites\RAWP\
(4-01)Site_Parcel_Map_Choccolocco.mxd
1/6/2015 ARW
Source: HGL, Shaw

