

October 31, 2016

Melissa L. Shirley, P.E.
Contracting Officer Representative
U.S. Army Corps of Engineers, Mobile District
109 St. Joseph Street
Mobile, AL 36602

**Re: MEC Safety Support Letter Report, Response Event 5, Bains Gap Road Ranges
Environmental Remediation Services at Four Sites, Fort McClellan, Anniston, AL
Contract: W912DY-10-D-0023, Task Order No. CK01
HGL Project Number: H10501**

Dear Ms. Shirley:

HydroGeoLogic, Inc. (HGL) is pleased to submit this letter report documenting the findings for the fifth Munitions and Explosives of Concern (MEC) Safety Support response event at the Bains Gap Road Ranges (BGRR) site for the above-referenced project. This documentation supports Project Milestone 116.05 as described in the PMP/QASP and project schedule, and will serve as backup for invoicing purposes.

Activities and Operations Performed

During the conduct of the remedial activities at the subject project site, HGL's field team identified what appeared to be Material Potentially Presenting an Explosive Hazard (MPPEH) on August 11, 2016 (see **Attachment 1**). HGL's Site Safety and Health Officer established a cordon around the area and all project personnel were instructed to keep out of the affected area. A photo was provided to the unexploded ordnance (UXO) staff assigned to respond to the project location for MEC Safety Support who confirmed that the item was MPPEH. On August 12, 2016, HGL's lead Senior UXO Supervisor (SUXOS), Mr. Neil Feist, and the UXO Quality Control Specialist (UXOQCS), Mr. Scott Schroepfer, responded to Fort McClellan in accordance with the MEC Safety Support Work Plan to assess the item. Upon arrival and initial inspection, the item was determined to be an expended MK 1, 75mm Shrapnel projectile. The UXO personnel conducted independent 100% inspections of the item in accordance with EM 385-1-97 and the MEC Safety Support Work Plan and it was determined to be Material Documented as Safe (MDAS).

MEC and MC Removal Action/Remedial Action Results

The UXO staff placed the MDAS in the drum with a numbered seal and locked it inside the Conex at the project office location. Upon completion of field construction activities at Fort McClellan, the SUXOS and UXOQCS will mobilize to the site to prepare a chain of custody and DD Form 1348-1a certifying and verifying all items, and any future finds as MDAS. The MDAS drum will then be manifested and shipped to our MDAS vendor Demil Metals for final disposition and smelting. Disposition documentation, including chain of custody, DD Form 1348-1a and the letter certifying final disposition will be provided at that time.

QC Activities and Results

Independent inspections were conducted of the items. Final QC verification will be conducted prior to shipment.

QA Activities and Results

Not applicable for this response action.

MC Sampling Activities and Results

Not applicable for this response action.

Exposure Data

Hours worked: 17 hours

Lost workday accidents: 0

Lost workdays due to on-the-job accidents: 0

Property damage accidents with property loss value \$2000 or greater: 0

Please call or email me at (210) 477-2215, dreasons@hgl.com should you have any questions or comments concerning this document.

Sincerely,



David S. Reasons, PMP
Project Manager

Attachments:

1. Photograph of Expended MK-1 75mm Shrapnel Projectile
2. Location Map

cc: Neil Feist, HydroGeoLogic, Inc.
Michael Forsyth, HydroGeoLogic, Inc.
Linda Bookout, USACE Mobile
Chad McLeod, USACE Anniston Resident Office
Scott Bolton, FTMC Army Transition Force
Lisa Holstein, FTMC Army Transition Force
Bill Shanks, FTMC Army Transition Force
Emery Hoyle, US Fish and Wildlife Service
Brandi Little, Alabama Department of Environmental Management

ATTACHMENT 1 - PHOTOGRAPH



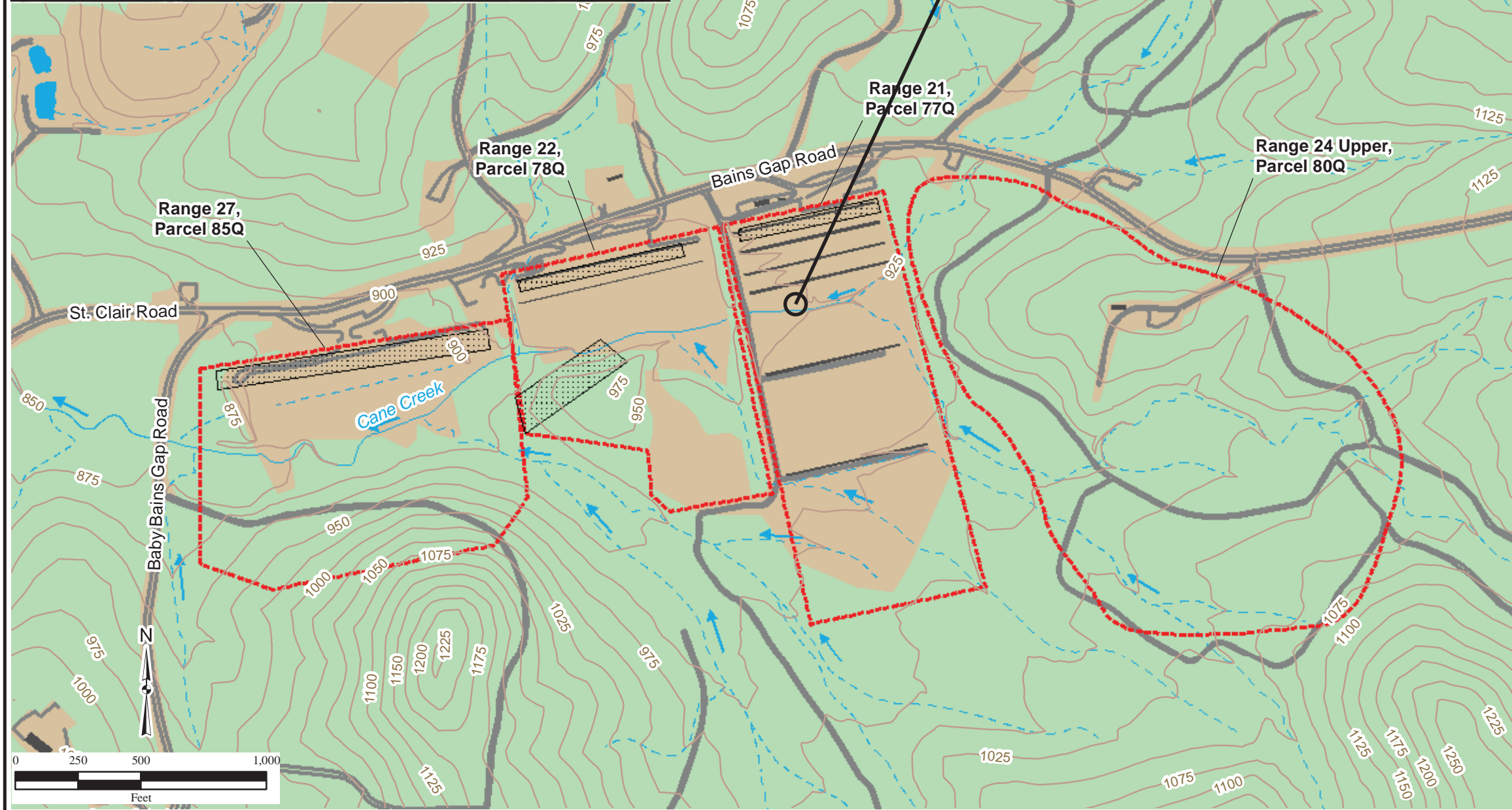
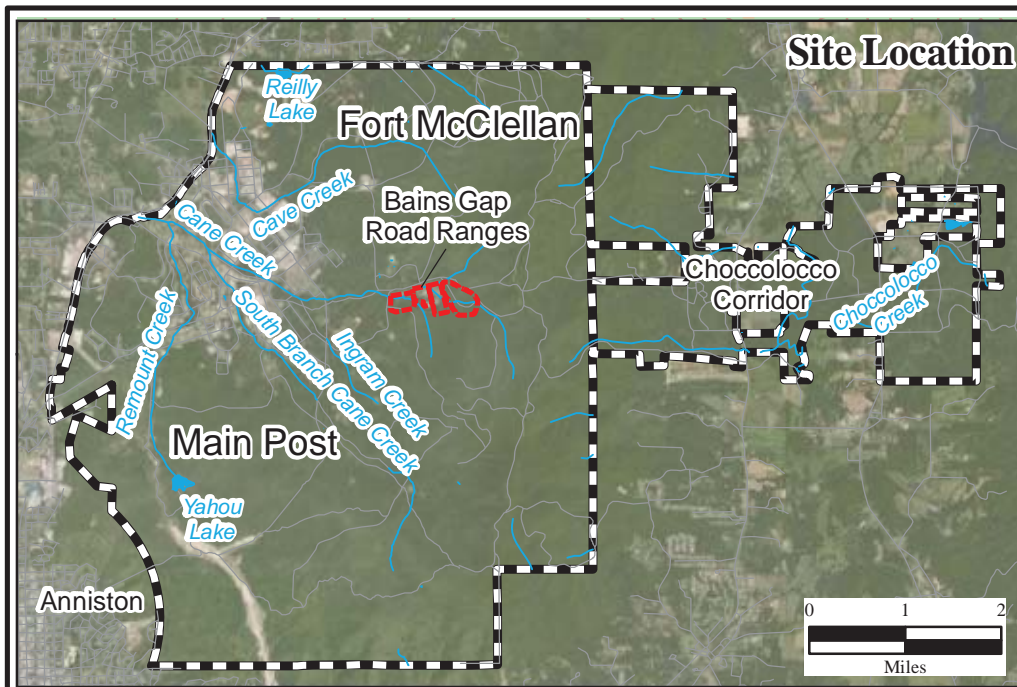
Expended MK 1, 75mm Shrapnel Projectile

Attachment 2 Location of Expended MK 1, 75mm Shrapnel Projectile Bains Gap Road Ranges Fort McClellan, AL

**LOCATION OF EXPENDED MK 1,
75MM SHRAPNEL PROJECTILE
(RESPONSE 5)**
LAT: 33.17464; LONG: -85.75432

Legend

- Surface Drainage Feature (dashed where intermittent)
- Surface Water Flow Direction
- Topographic Contour (25 foot interval)
- Road
- Firing Line
- Concrete Slab
- Wooded
- Not Wooded
- Parcel



\\Gst-srv-01\HGLGIS\Ft_McClellan\FourSites\RAWP\
(2-01)Site_Parcels_Map_BGR.mxd
10/29/2014 ARW
Source: HGL, Shaw

