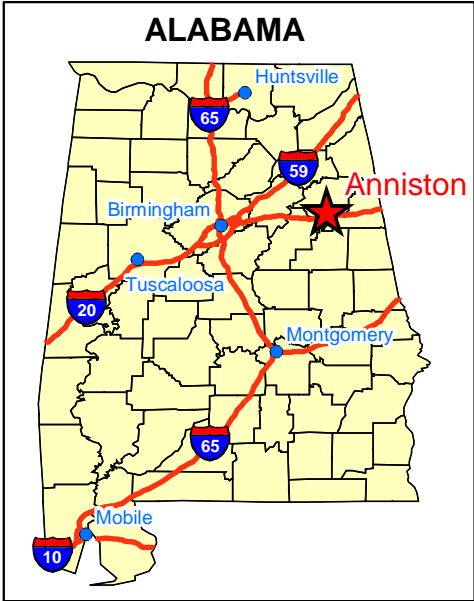


## **FIGURES**



← PELHAM RANGE

CHOCOLOCCO CORRIDOR

CALHOUN COUNTY  
CLEBURNE COUNTY

McCLELLAN

431

78

20

TALLADEGA COUNTY

CALHOUN COUNTY  
CLEBURNE COUNTY

431

20

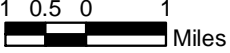


Figure 1-1  
Site Location Map  
McClellan  
Anniston, Alabama

Matrix  
Environmental  
Services, L.L.C.  
*Integrated Environmental Solutions*

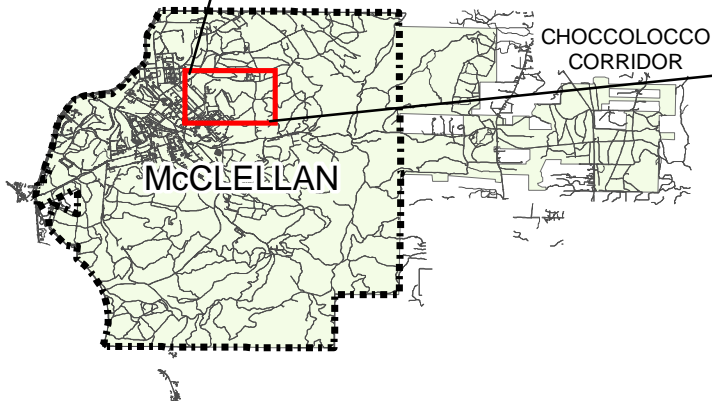
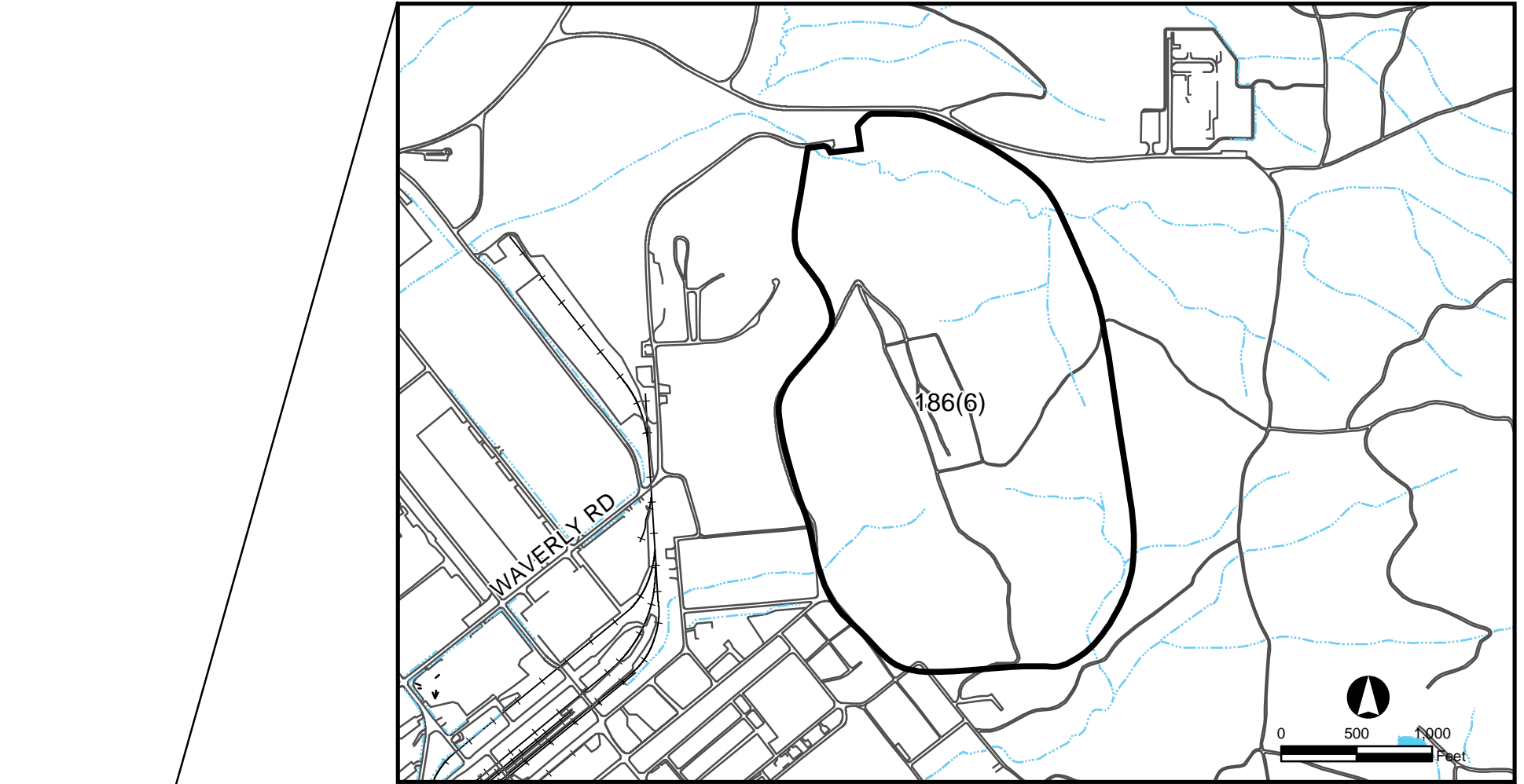


Figure 1-2  
Parcel Location Map  
Training Area T-38, Parcel 186(6)  
McClellan  
Anniston, Alabama

Matrix  
Environmental  
Services, L.L.C.  
*Integrated Environmental Solutions*

INITIAL DR: A. MAYLA  
 PROJ. MGR.: J. YACCOUB  
 DWG. NO.: 1838936.m133  
 PROJ. NO.: 836936  
 DRAFT, CHECK, BY:  
 ENGR, CHECK, BY: A. MAYLA  
 DATE LAST REV.:  
 DRAWN BY:  
 STARTING DATE: 01/17/00  
 DRAWN BY: D. BILLINGSLEY  
 2/26/2004  
 10:01:36 PM  
 c:\acad\Design\838936.m133

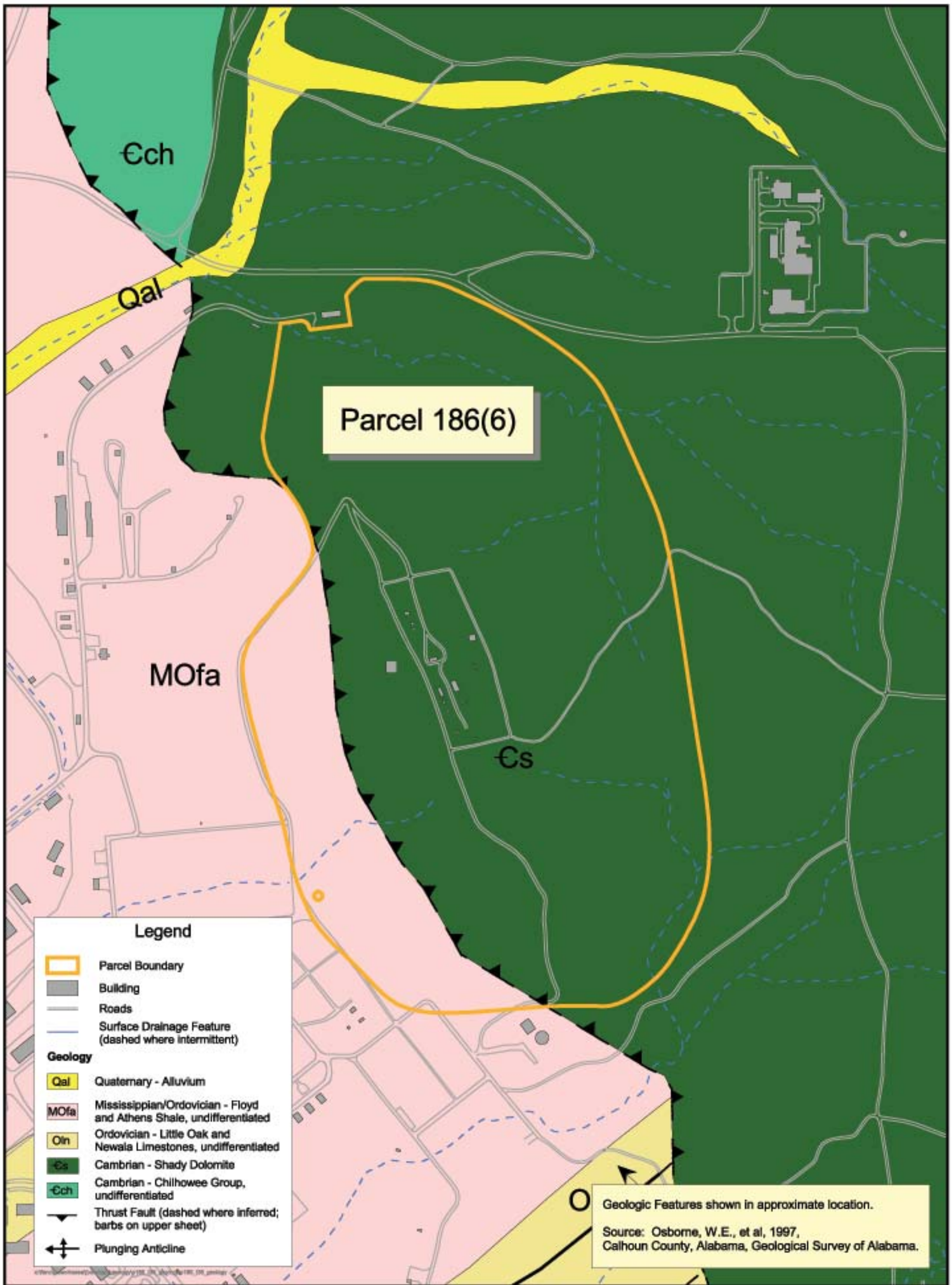


LEGEND	
	UNIMPROVED ROADS
	PAVED ROADS
	BUILDING/CONCRETE PAD
	TOPOGRAPHIC CONTOURS (CONTOUR INTERVAL - 5 FOOT)
	TREES / TREELINE
	FENCE
	UTILITY POLE
	INFERRED DISPOSAL PIT AREA
	TRENCH

**FIGURE 2-1**  
 SITE MAP, FENCED AREA  
 TRAINING AREA T-38, FORMER  
 TECHNICAL ESCORT REACTION AREA  
 PARCEL 186(6)  
 U. S. ARMY CORPS OF ENGINEERS  
 MOBILE DISTRICT  
 FORT McCLELLAN  
 CALHOUN COUNTY, ALABAMA  
 Contract No. DACA21-96-D-0018



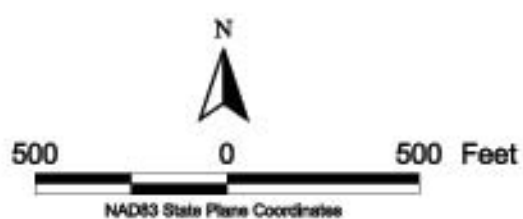
Source: Shaw, 2004



**Figure 2-2**

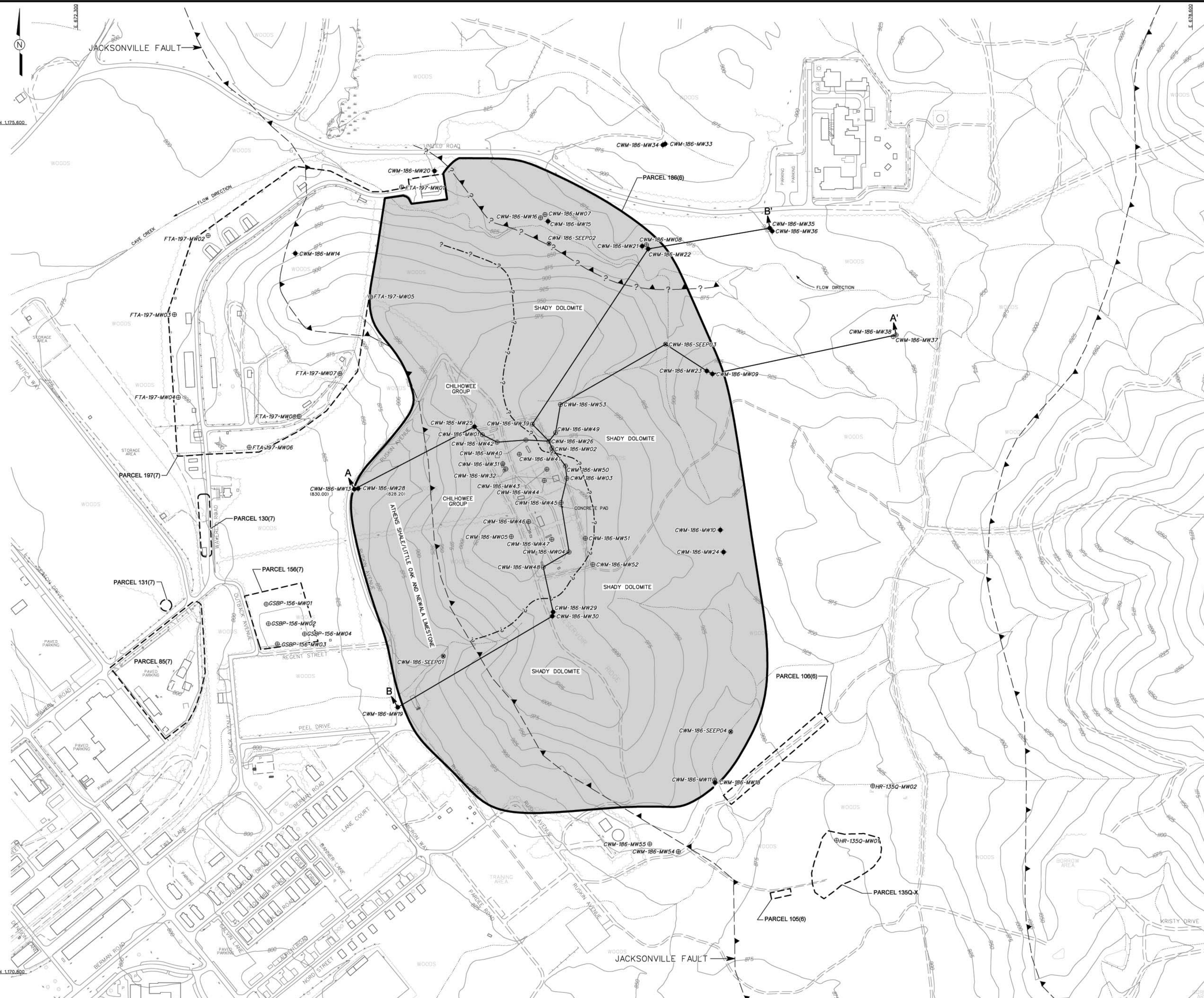
Source: Shaw, 2004

**Geologic Map -  
Training Area T-38, Parcel 186(6)**

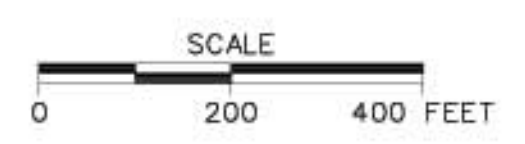


STARTING DATE: 11/19/03 DATE LAST REV: DRAWN BY: D. BOUAR  
 DRAWN BY: D. BOUAR  
 START: CHECK BY: DATE: 11/19/03  
 END: CHECK BY: S. MOHRAN  
 DWG. NO.: 18-895849-102  
 PROJ. NO.: 18-895849-102  
 PROJ. NAME: J. YACOB  
 PROJ. NO.: 18-895849-102

2/25/2004 2:22:47 PM  
 c:\cadd\design\18-895849-102



- LEGEND**
- UNIMPROVED ROADS AND PARKING
  - PAVED ROADS AND PARKING
  - BUILDING
  - TOPOGRAPHIC CONTOURS (CONTOUR INTERVAL - 25 FEET)
  - TREES / TREELINE
  - PARCEL BOUNDARY
  - SURFACE DRAINAGE / CREEK
  - MINOR SURFACE DRAINAGE FEATURE
  - FENCE
  - RAILROAD
  - UTILITY POLE
  - INFERRED DISPOSAL PIT AREA
  - SEEP/SPRING LOCATION
  - RESIDUUM MONITORING WELL LOCATION
  - BEDROCK MONITORING WELL LOCATION
  - JACKSONVILLE AND OTHER MAJOR THRUST FAULTS (OSBORNE, ET AL., 1997)
  - INFERRED GEOLOGIC CONTACT BETWEEN SHADY DOLOMITE RESIDUUM AND CHILHOWEE GROUP RESIDUUM
  - INFERRED SPLAY FAULT
  - LINE OF CROSS SECTION



**FIGURE 2-3**  
 CROSS SECTION LOCATION MAP  
 TRAINING AREA T-38  
 FORMER TECHNICAL ESCORT  
 REACTION AREA  
 PARCEL 186(6)

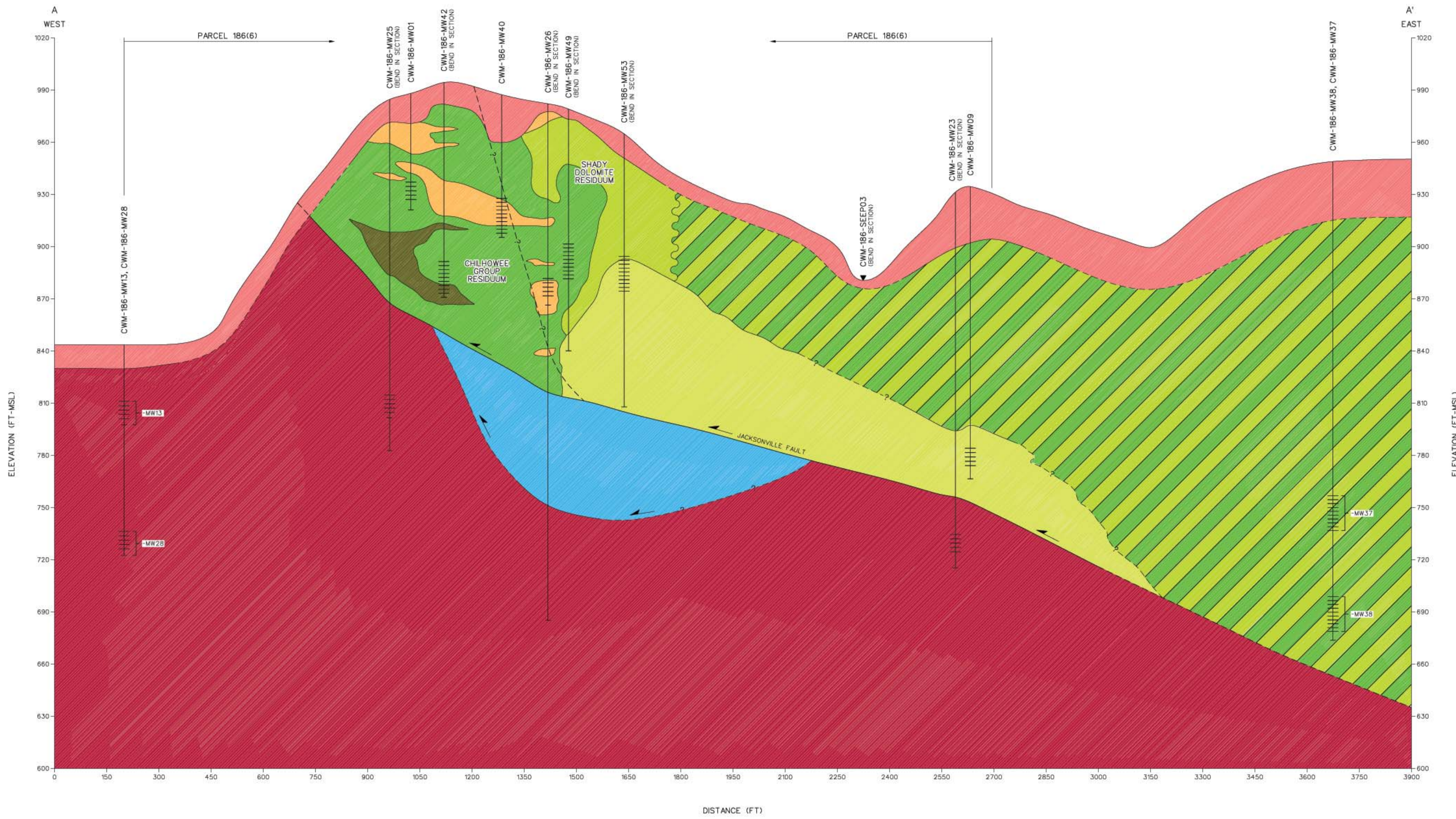
U. S. ARMY CORPS OF ENGINEERS  
 MOBILE DISTRICT  
 FORT McCLELLAN  
 CALHOUN COUNTY, ALABAMA  
 Contract No. DACA21-96-D-0018



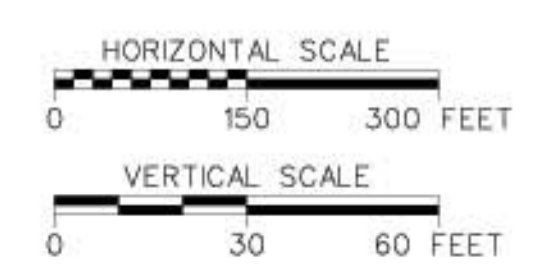
Source: Shaw, 2004

DWG. NO.: 838936es.121  
 PROJ. NO.: 838936  
 INITIATOR: B. HEDBERG  
 DRAFT. CHK. BY: B. HEDBERG  
 ENGR. CHK. BY: [blank]  
 DATE LAST REV.: [blank]  
 DRAWN BY: L. STOUT

2/25/2004  
 11:10:19 AM  
 838936es.121



- LEGEND:**
- SCREEN INTERVAL
  - GEOLOGIC CONTACT (DASHED WHERE INFERRED)
  - FAULT (DASHED WHERE INFERRED)
  - CLAY, CLAY AND SILT
  - CLAY, CLAY AND SILT WITH SOME TO LITTLE CHERT AND SANDSTONE GRAVEL AND SHALE, HIGHLY WEATHERED
  - CLAY, CLAY AND SILT WITH SOME TO LITTLE FINE TO COARSE SAND AND SANDSTONE GRAVEL
  - CLAY, CLAY AND SILT WITH MUDSTONE, SHALE AND SANDSTONE GRAVEL
  - SAND, SAND AND CLAY WITH SOME TO LITTLE QUARTZITE SANDSTONE GRAVEL
  - UNDIFFERENTIATED SHADY DOLOMITE RESIDUUM
  - UNDIFFERENTIATED CHILHOWEE GROUP RESIDUUM
  - MISSISSIPPIAN / OROCOEVIAN - FLOYD AND ATHENS SHALE UNDIFFERENTIATED
  - OROCOEVIAN - LITTLE OAK AND NEWALA LIMESTONE UNDIFFERENTIATED
  - CAMBRIAN-SHADY DOLOMITE
  - CAMBRIAN-CHILHOWEE GROUP

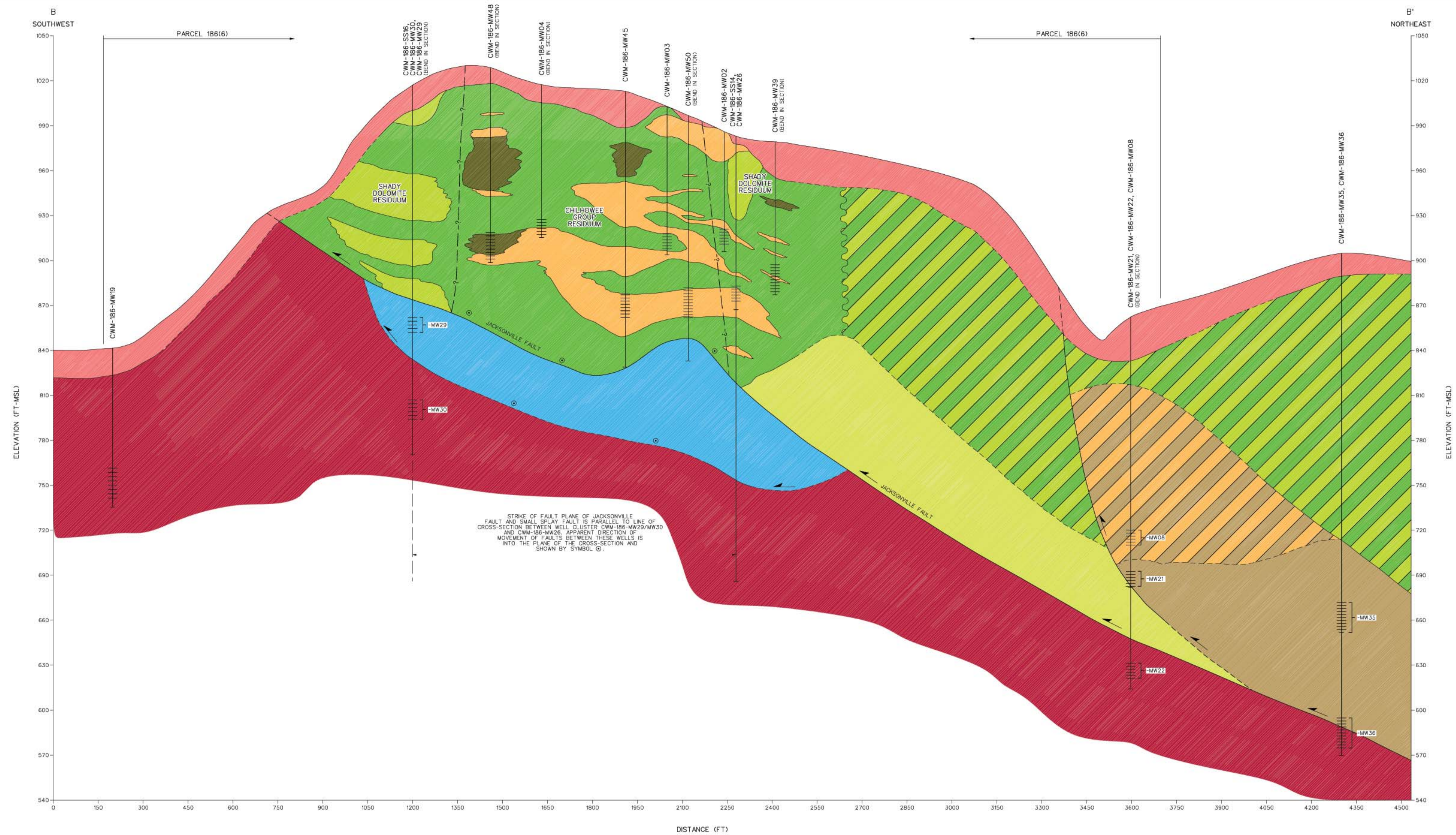


**FIGURE 2-4**  
 GEOLOGIC CROSS-SECTION A-A'  
 TRAINING AREA T-38 - FORMER TECHNICAL  
 ESCORT REACTION AREA - PARCEL 186(6)  
 U. S. ARMY CORPS OF ENGINEERS  
 MOBILE DISTRICT  
 FORT McLELLAN  
 CALHOUN COUNTY, ALABAMA  
 Contract No. DACA21-96-D-0018

Matrix Environmental Services, LLC  
 Integrated Environmental Solutions  
 Source: Shaw, 2004

DWG. NO.: B38936a.122  
 PROJ. NO.: B38936  
 INITIATOR: B. HEDBERG  
 ENGR. CHK. BY: B. HEDBERG  
 DRAFT. CHK. BY: B. HEDBERG  
 DATE LAST REV.:  
 DRAWN BY: L. STOUT

2/25/2004  
 11:36:38 AM



- LEGEND:**
- SCREEN INTERVAL
  - GEOLOGIC CONTACT (DASHED WHERE INFERRED)
  - FAULT (DASHED WHERE INFERRED)
  - CLAY, CLAY AND SILT
  - CLAY, CLAY AND SILT WITH SOME TO LITTLE CHERT AND SANDSTONE GRAVEL AND SHALE, HIGHLY WEATHERED
  - CLAY, CLAY AND SILT WITH SOME TO LITTLE FINE TO COARSE SAND AND SANDSTONE GRAVEL
  - CLAY, CLAY AND SILT WITH MUDSTONE, SHALE AND SANDSTONE GRAVEL
  - SAND, SAND AND CLAY WITH SOME TO LITTLE QUARTZITE SANDSTONE GRAVEL
  - UNDIFFERENTIATED SHADY DOLOMITE RESIDUUM
  - UNDIFFERENTIATED CHILHOWEE GROUP RESIDUUM
  - MISSISSIPPIAN / ORDOVICIAN - FLOYD AND ATHENS SHALE UNDIFFERENTIATED
  - ORDOVICIAN - LITTLE OAK AND NEWALA LIMESTONE UNDIFFERENTIATED
  - CAMBRIAN-SHADY DOLOMITE
  - CAMBRIAN-CHILHOWEE GROUP

**FIGURE 2-5**  
 GEOLOGIC CROSS-SECTION B-B'  
 TRAINING AREA T-38 - FORMER TECHNICAL  
 ESCORT REACTION AREA - PARCEL 186(6)  
 U. S. ARMY CORPS OF ENGINEERS  
 MOBILE DISTRICT  
 FORT MCLELLAN  
 CALHOUN COUNTY, ALABAMA  
 Contract No. DACA21-96-D-0018

