



## Well Installation Diagram

Well: MW-319

Client: DDMT

Project: OSI

Project Number: 10101451

Site Location: 1852 Glory Cir.

Logged by: C. Mokri

Well Completion Date: 6/2/2020

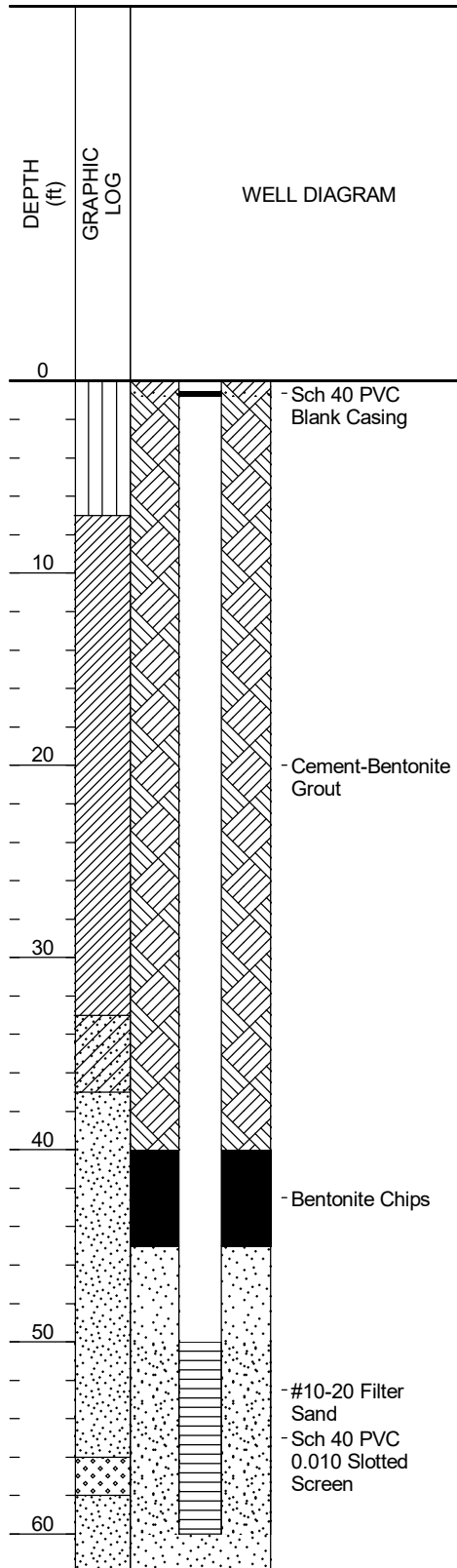
Northing: 282392.8

Easting: 803365.2

Ground Elevation (NAVD88): 296.0

Top of Screen Elevation (ft, NAVD): 246.0

Top of Casing Elevation (ft, NAVD): 295.65



Drilling Company: Cascade

Drilling Method: Sonic TS150CC

Borehole Diameter (in): 6

Bollards: No

Well Diameter (in): 2

Well Material: SCH 40 PVC

Slot Size (in): 0.010

Type of Filter Pack: Sand

Filter Pack Gradation: #10-20

Filter Pack Quantity: 300 lbs.

Bentonite Type: 3/8 in. Chips

Bentonite Quantity: 75 lbs.

Grout Type: Type II

Grout Quantity: 40 gal.

Well Development Method: Waterra Hydrolift II

Well Development Date: 6/13/20

Depth to Water (ft. btoc): 47.63

Surface Completion: 8" Diameter Flush Mount Well Box

Pad Dimensions: 3 ft. x 3 ft.

Riser Length (ft): 49.7

Depth to Top of Bentonite (ft, bgs): 40

Depth to Top of Filter Pack (ft, bgs): 45

Length of Screen (ft): 10

Total Well Depth (ft, btoc): 59.9

Total Boring Depth (ft, btoc): 62

Created By: C. Mokri

Checked By: T. Holmes



## Well Installation Diagram

Well: MW-320

Client: DDMT

Project: OSI

Project Number: 10101451

Site Location: 1908 Glory Cir.

Logged by: C. Mokri

Well Completion Date: 6/3/2020

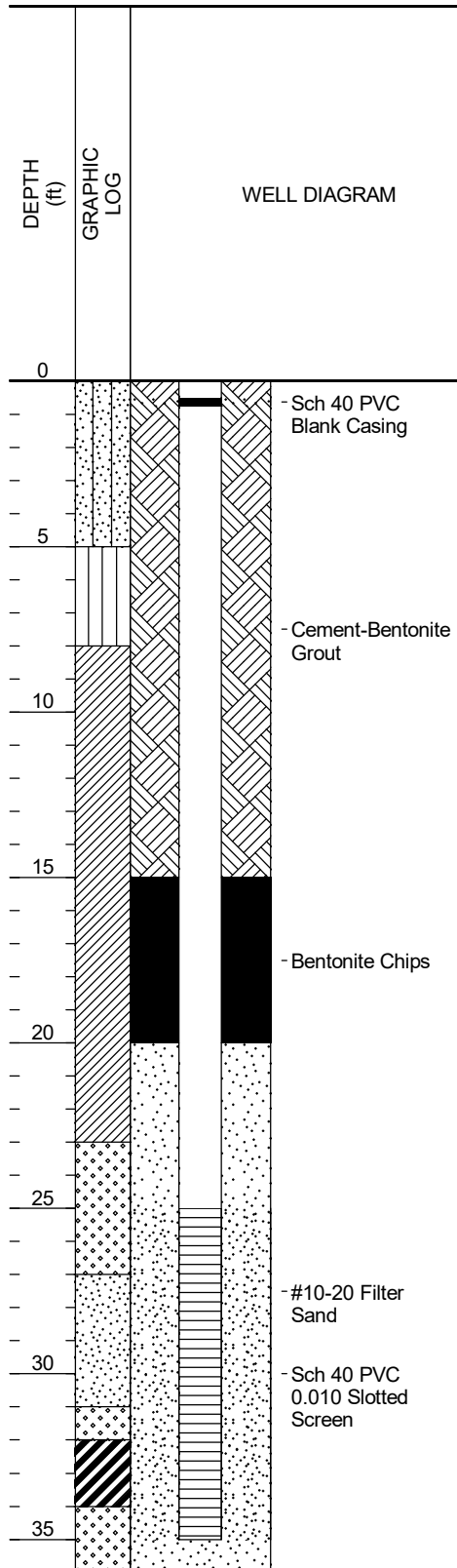
Northing: 282815.0

Easting: 803962.5

Ground Elevation (NAVD88): 269.2

Top of Screen Elevation (ft, NAVD): 244.5

Top of Casing Elevation (ft, NAVD): 260.00



Drilling Company: Cascade  
Drilling Method: Sonic TS150CC  
Borehole Diameter (in): 6

Bollards: No  
Well Diameter (in): 2  
Well Material: SCH 40 PVC  
Slot Size (in): 0.010

Type of Filter Pack: Sand  
Filter Pack Gradation: #10-20  
Filter Pack Quantity: 250 lbs.  
Bentonite Type: 3/8 in. Chips  
Bentonite Quantity: 75 lbs.

Grout Type: Type II  
Grout Quantity: 20 gal.  
Well Development Method: Waterra Hydrolift II  
Well Development Date: 6/12/20  
Depth to Water (ft. btoc): 16.38

Surface Completion: 8" Diameter Flush Mount Well Box

Pad Dimensions: 3 ft. x 3 ft.

Riser Length (ft): 24.6

Depth to Top of Bentonite (ft, bgs): 15

Depth to Top of Filter Pack (ft, bgs): 20

Length of Screen (ft): 10

Total Well Depth (ft, btoc): 34.8

Total Boring Depth (ft, btoc): 36

Created By: C. Mokri

Checked By: T. Holmes



# Well Installation Diagram

Well: MW-321

Client: DDMT

Project: OSI

Project Number: 10101451

Site Location: 1888 Glory Cir.

Logged by: C. Mokri

Well Completion Date: 6/3/2020

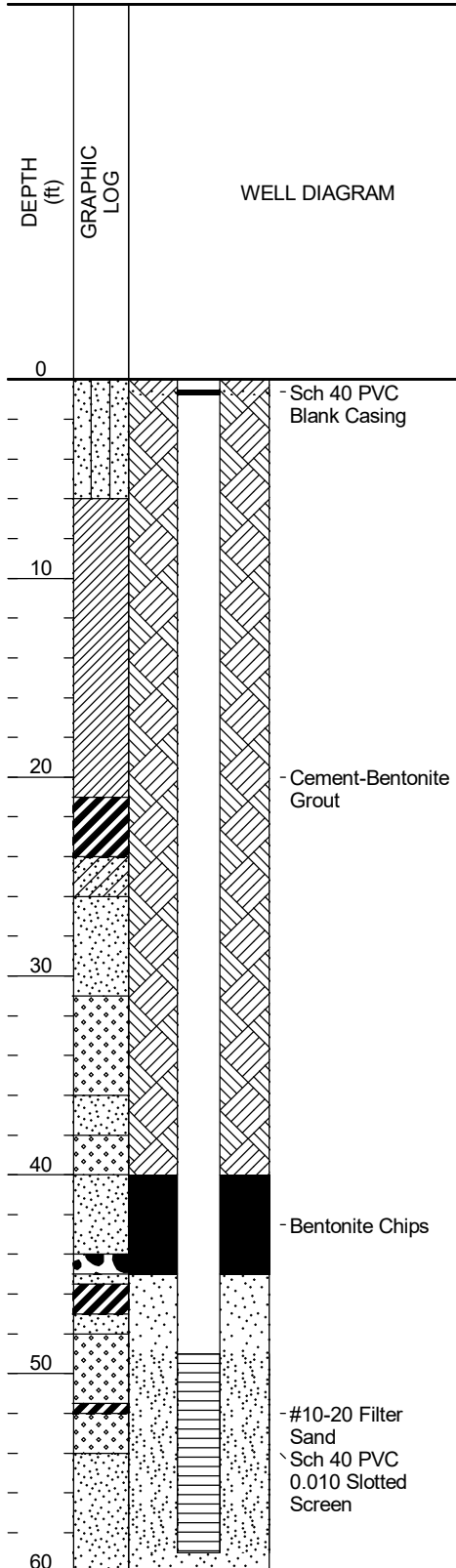
Northing: 282637.6

Easting: 803752.2

Ground Elevation (NAVD88): 284.9

Top of Screen Elevation (ft, NAVD): 235.8

Top of Casing Elevation (ft, NAVD): 284.68



Drilling Company: Cascade

Drilling Method: Sonic TS150CC

Borehole Diameter (in): 6

Bollards: No

Well Diameter (in): 2

Well Material: SCH 40 PVC

Slot Size (in): 0.010

Type of Filter Pack: Sand

Filter Pack Gradation: #10-20

Filter Pack Quantity: 300 lbs.

Bentonite Type: 3/8 in. Chips

Bentonite Quantity: 75 lbs.

Grout Type: Type II

Grout Quantity: 40 gal.

Well Development Method: Waterra Hydrolift II

Well Development Date: 6/11/20

Depth to Water (ft. btoc): 33.99

Surface Completion: 8" Diameter Flush Mount Well Box

Pad Dimensions: 3 ft. x 3 ft.

Riser Length (ft): 48.9

Depth to Top of Bentonite (ft, bgs): 40

Depth to Top of Filter Pack (ft, bgs): 45

Length of Screen (ft): 10

Total Well Depth (ft, btoc): 59.1

Total Boring Depth (ft, btoc): 60

Created By: C. Mokri

Checked By: T. Holmes



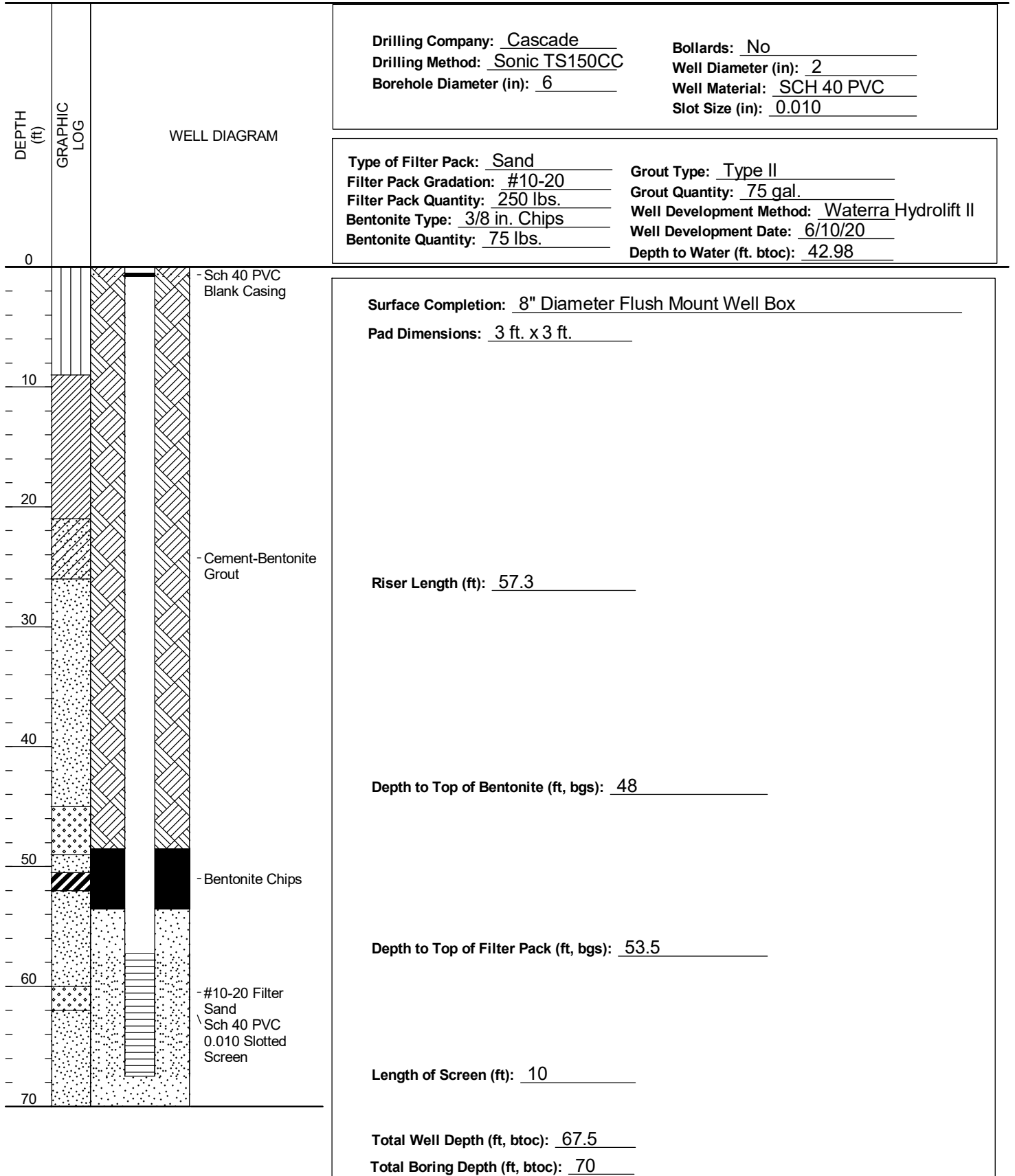
## Well Installation Diagram

Well: MW-322

Client: DDMT  
Project: OSI  
Project Number: 10101451  
Site Location: Hayes and Boyle Ave

Logged by: C. Mokri  
Well Completion Date: 6/4/2020  
Northing: 281913.6  
Easting: 803177.2

Ground Elevation (NAVD88): 286.9  
Top of Screen Elevation (ft, NAVD): 229.4  
Top of Casing Elevation (ft, NAVD): 286.63



Created By: C. Mokri

Checked By: T. Holmes



## Well Installation Diagram

Well: MW-323

Client: DDMT

Project: OSI

Project Number: 10101451

Site Location: 1740 Dunn Ave.

Logged by: C. Mokri

Well Completion Date: 6/6/2020

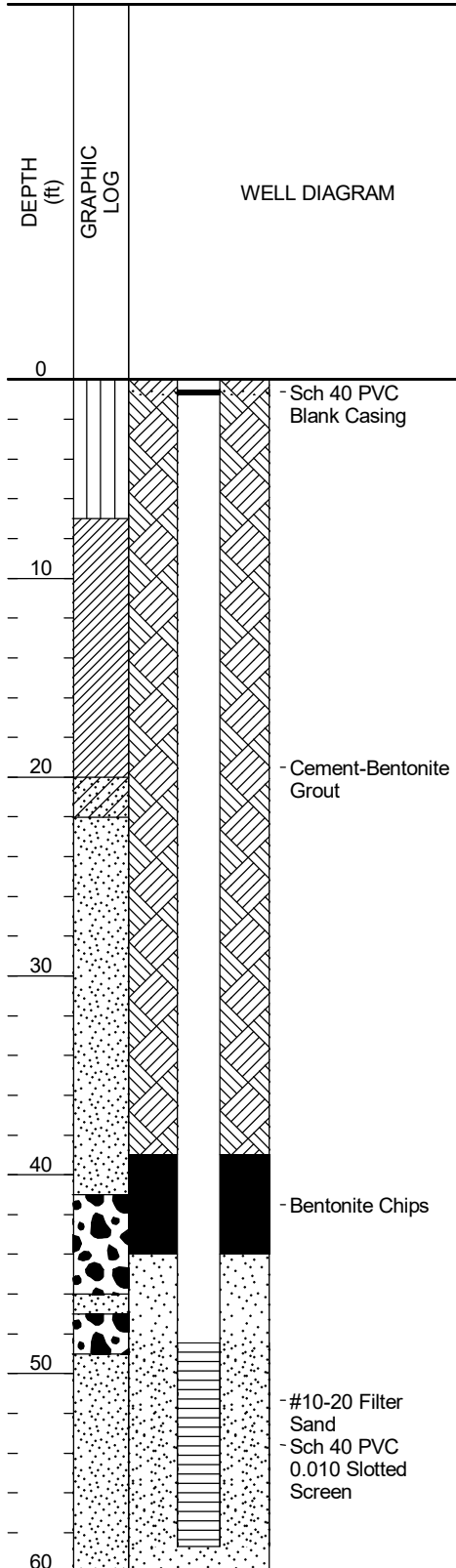
Northing: 282142.8

Easting: 802967.8

Ground Elevation (NAVD88): 275.8

Top of Screen Elevation (ft, NAVD): 226.9

Top of Casing Elevation (ft, NAVD): 275.33



Drilling Company: Cascade  
Drilling Method: Sonic TS150CC  
Borehole Diameter (in): 6

Bollards: No  
Well Diameter (in): 2  
Well Material: SCH 40 PVC  
Slot Size (in): 0.010

Type of Filter Pack: Sand  
Filter Pack Gradation: #10-20  
Filter Pack Quantity: 200 lbs.  
Bentonite Type: 3/8 in. Chips  
Bentonite Quantity: 75 lbs.

Grout Type: Type II  
Grout Quantity: 50 gal.  
Well Development Method: Waterra Hydrolift II  
Well Development Date: 6/13/20  
Depth to Water (ft. btoc): 31.90

Surface Completion: 8" Diameter Flush Mount Well Box

Pad Dimensions: 3 ft. x 3 ft.

Riser Length (ft): 48.5

Depth to Top of Bentonite (ft, bgs): 39

Depth to Top of Filter Pack (ft, bgs): 44

Length of Screen (ft): 10

Total Well Depth (ft, btoc): 58.7

Total Boring Depth (ft, btoc): 60

Created By: C. Mokri

Checked By: T. Holmes



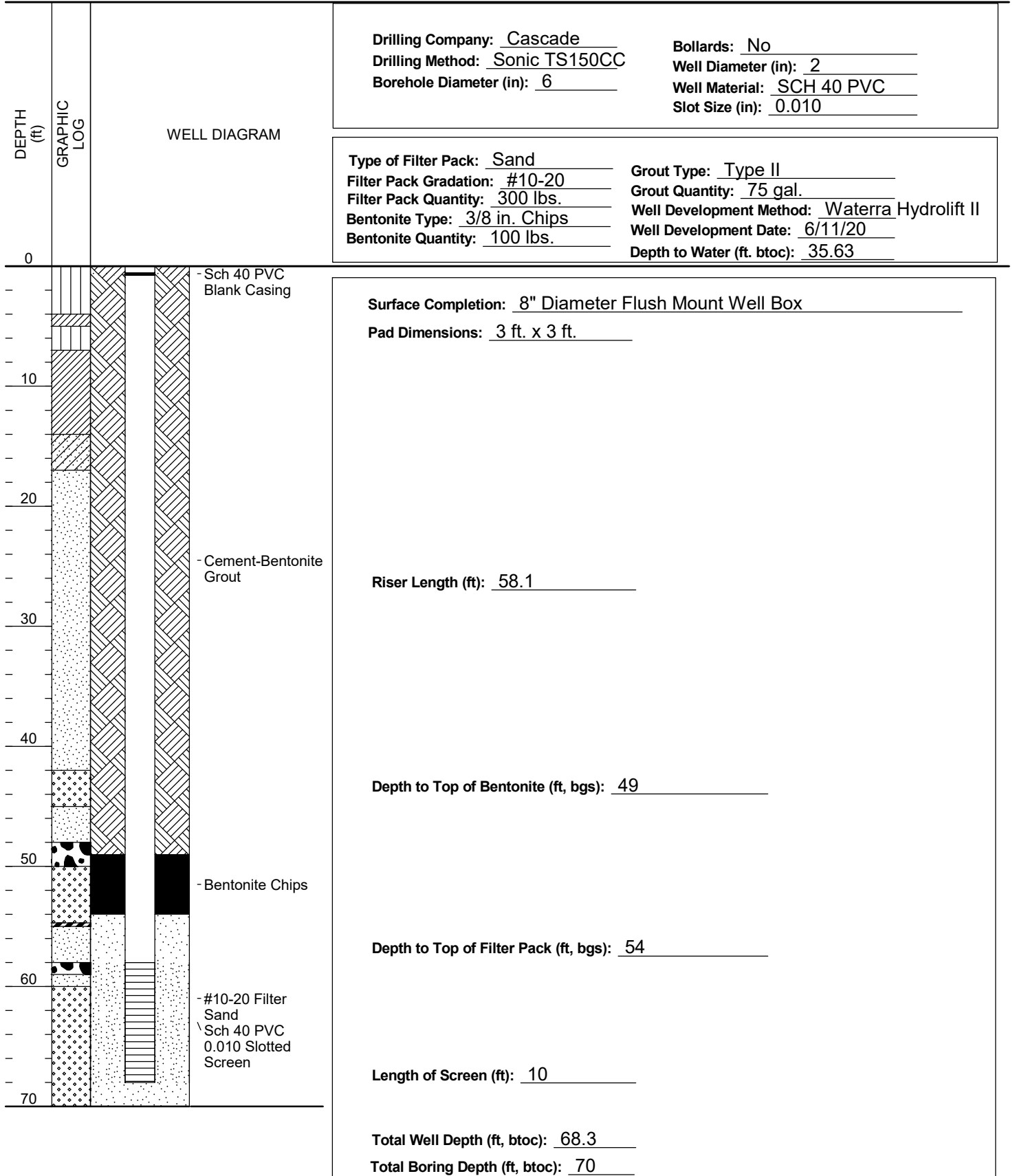
# Well Installation Diagram

Well: MW-324

Client: DDMT  
Project: OSI  
Project Number: 10101451  
Site Location: McClean and Person

Logged by: C. Mokri  
Well Completion Date: 6/7/2020  
Northing: 282370.6  
Easting: 802891.6

Ground Elevation (NAVD88): 279.1  
Top of Screen Elevation (ft, NAVD): 220.7  
Top of Casing Elevation (ft, NAVD): 278.70



Created By: C. Mokri  
Created Date: 6/30/20

Checked By: T. Holmes  
Checked Date: 7/6/20



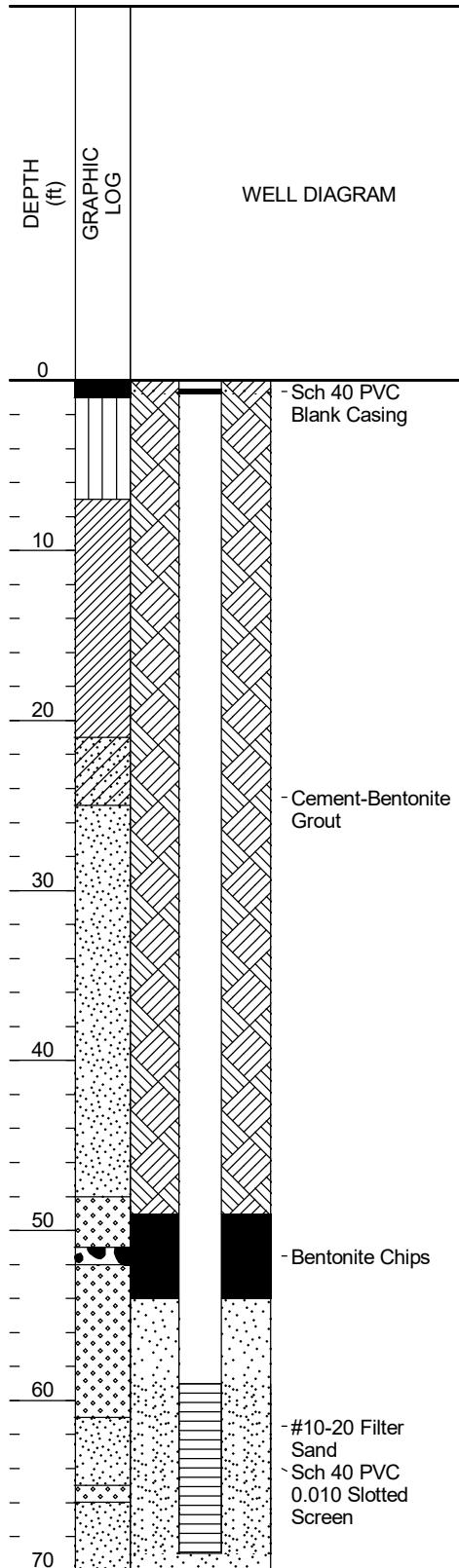
# Well Installation Diagram

Well: MW-325

Client: DDMT  
Project: OSI  
Project Number: 10101451  
Site Location: NE end of McClean Blvd.

Logged by: C. Mokri  
Well Completion Date: 6/7/2020  
Northing: 282706.3  
Easting: 803372.0

Ground Elevation (NAVD88): 284.5  
Top of Screen Elevation (ft, NAVD): 225.8  
Top of Casing Elevation (ft, NAVD): 284.33



Drilling Company: Cascade  
Drilling Method: Sonic TS150CC  
Borehole Diameter (in): 6

Bollards: No  
Well Diameter (in): 2  
Well Material: SCH 40 PVC  
Slot Size (in): 0.010

Type of Filter Pack: Sand  
Filter Pack Gradation: #10-20  
Filter Pack Quantity: 275 lbs.  
Bentonite Type: 3/8 in. Chips  
Bentonite Quantity: 75 lbs.

Grout Type: Type II  
Grout Quantity: 75 gal.  
Well Development Method: Waterra Hydrolift II  
Well Development Date: 6/12/20  
Depth to Water (ft. btoc): 34.21

Surface Completion: 8" Diameter Flush Mount Well Box

Pad Dimensions: 3 ft. x 3 ft.

Riser Length (ft): 58.6

Depth to Top of Bentonite (ft, bgs): 49

Depth to Top of Filter Pack (ft, bgs): 54

Length of Screen (ft): 10

Total Well Depth (ft, btoc): 68.8

Total Boring Depth (ft, btoc): 70

Created By: C. Mokri

Checked By: T. Holmes



## Well Installation Diagram

Well: MW-326

Client: DDMT

Project: OSI

Project Number: 10101451

Site Location: SE corner of foundation

Logged by: C. Mokri

Well Completion Date: 6/8/2020

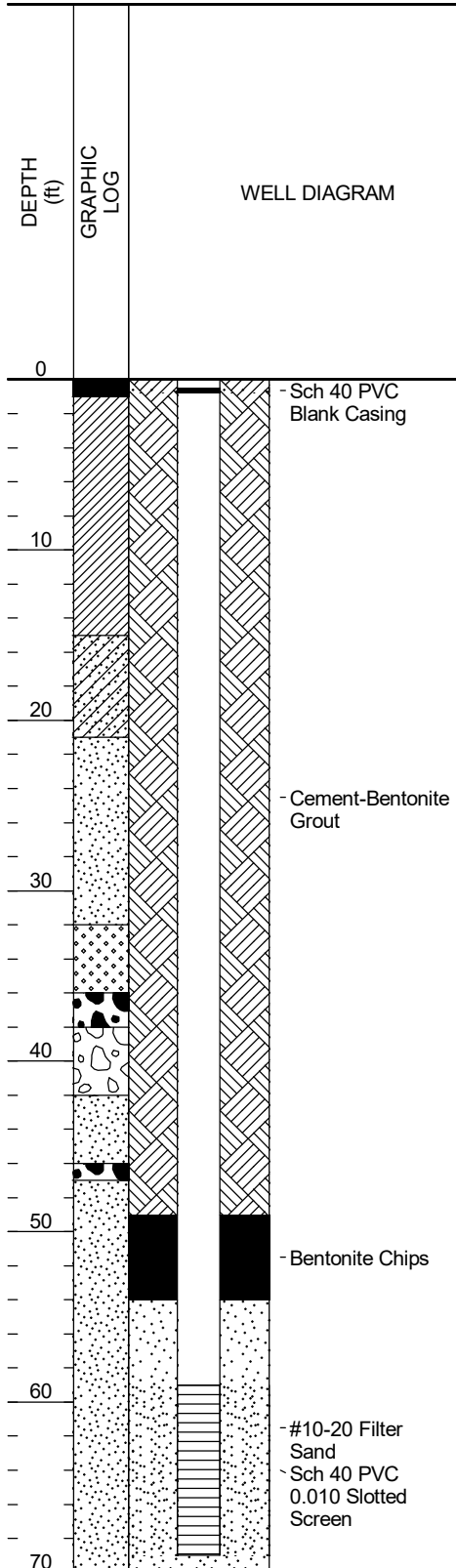
Northing: 282737.6

Easting: 803251.5

Ground Elevation (NAVD88): 274.2

Top of Screen Elevation (ft, NAVD): 215.3

Top of Casing Elevation (ft, NAVD): 273.83



Drilling Company: Cascade  
Drilling Method: Sonic TS150CC  
Borehole Diameter (in): 6

Bollards: No  
Well Diameter (in): 2  
Well Material: SCH 40 PVC  
Slot Size (in): 0.010

Type of Filter Pack: Sand  
Filter Pack Gradation: #10-20  
Filter Pack Quantity: 250 lbs.  
Bentonite Type: 3/8 in. Chips  
Bentonite Quantity: 75 lbs.

Grout Type: Type II  
Grout Quantity: 75 gal.  
Well Development Method: Waterra Hydrolift II  
Well Development Date: 6/13/20  
Depth to Water (ft. btoc): 24.96

Surface Completion: 8" Diameter Flush Mount Well Box

Pad Dimensions: 3 ft. x 3 ft.

Riser Length (ft): 58.6

Depth to Top of Bentonite (ft, bgs): 49

Depth to Top of Filter Pack (ft, bgs): 54

Length of Screen (ft): 10

Total Well Depth (ft, btoc): 68.8

Total Boring Depth (ft, btoc): 70

Created By: C. Mokri

Checked By: T. Holmes





## Well Installation Diagram

Well: MW-327

Client: DDMT

Project: OSI

Project Number: 10101451

Site Location: W. of foundation

Logged by: C. Mokri

Well Completion Date: 6/8/2020

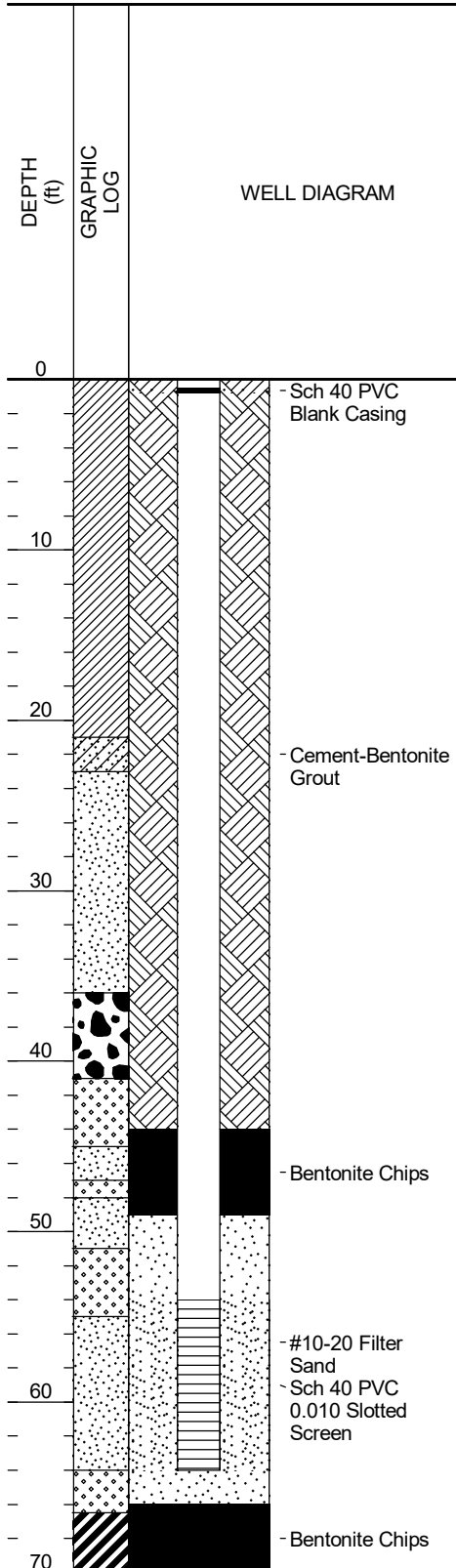
Northing: 282818.9

Easting: 803131.3

Ground Elevation (NAVD88): 273.3

Top of Screen Elevation (ft, NAVD): 219.1

Top of Casing Elevation (ft, NAVD): 272.91



Drilling Company: Cascade

Drilling Method: Sonic TS150CC

Borehole Diameter (in): 6

Bollards: No

Well Diameter (in): 2

Well Material: SCH 40 PVC

Slot Size (in): 0.010

Type of Filter Pack: Sand

Filter Pack Gradation: #10-20

Filter Pack Quantity: 325 lbs.

Bentonite Type: 3/8 in. Chips

Bentonite Quantity: 125 lbs.

Grout Type: Type II

Grout Quantity: 75 gal.

Well Development Method: Waterra Hydrolift II

Well Development Date: 6/13/20

Depth to Water (ft. btoc): 24.50

Surface Completion: 8" Diameter Flush Mount Well Box

Pad Dimensions: 3 ft. x 3 ft.

Riser Length (ft): 53.9

Depth to Top of Bentonite (ft, bgs): 44

Depth to Top of Filter Pack (ft, bgs): 49

Length of Screen (ft): 10

Total Well Depth (ft, btoc): 64.1

Total Boring Depth (ft, btoc): 70

Created By: C. Mokri

Checked By: T. Holmes