



FIELD BOREHOLE LOG

Well ID: MW-319
Total Depth (ft. bgs): 62

PROJECT: OSI

PROJECT NUMBER: 10101451

SITE LOCATION: 1852 Glory Cir.

PROJECT MANAGER: T. Holmes

LOGGED BY: C. Mokri

DATE STARTED: 6/2/20

DATE COMPLETED: 6/2/20

DRILLING CONTRACTOR: Cascade

DRILLER: J. Asua

METHOD/RIG: Sonic TS150CC

HOLE DIAMETER (IN): 6

GROUND SURFACE ELEVATION (NAVD): 296

DEPTH TO WATER (ft. btoc): 47.63 on 6/13/2020

BOREHOLE USE: Monitoring Well

NOTES: PID measurement indicated where greater than 0. Well installed on 6/2, pad installed on 6/3 and well developed on 6/13.

DEPTH (ft)	U.S.C.S.	GRAPHIC LOG	LAYER DEPTH	MATERIAL DESCRIPTION	Environmental Data PID (ppm)	WELL DIAGRAM
0						Casing Top Elev: 295.65 (ft)
—	ML		7.0	SILT, (ML) 2.5YR 5/3 reddish brown, dry, soft, non plastic, low dry strength, trace fine sand	2.6	- Sch 40 PVC Blank Casing
—	CL		11.0	LEAN CLAY, (CL) 2.5YR 5/3 reddish brown, medium stiff, medium plasticity, trace fine sand	1.5	
10	CL		15.0	LEAN CLAY, (CL) 2.5YR 5/3 reddish brown, medium stiff, medium plasticity, trace fine sand, some silt		- Cement-Bentonite Grout
—	CL		19.0	LEAN CLAY, (CL) 2.5YR 4/4 reddish brown, moist, soft, medium plasticity, trace fine sand		
20	CL		22.0	LEAN CLAY, (CL) 2.5YR 4/3 reddish brown, moist, medium stiff, medium plasticity, trace fine sand	2.7	
—	CL		23.5	LEAN CLAY, (CL) 2.5YR 5/6 red, moist, stiff, medium plasticity, some fine sand	1.2	
—	CL		28.0	LEAN CLAY, (CL) 2.5YR 6/6 light red, moist, soft, medium plasticity, some fine sand	1.3	- Bentonite Chips
30	CL		31.0	LEAN CLAY, (CL) 2.5YR 4/8 red, moist, medium stiff, medium plasticity, some sand		
—	CL		33.0	LEAN CLAY WITH SAND, (CL) 2.5YR 5/6 red, medium grained, moist, medium stiff, medium plasticity		
—	SC		37.0	CLAYEY SAND, (SC) 2.5YR 4/8 red, medium grained, moist, stiff, medium plasticity, trace fine gravel	0.9	
40	SP		41.0	POORLY GRADED SAND, (SP) 2.5YR 6/6 light red, fine to medium grained, moist, loose, trace gravel		
—	SP		42.0	POORLY GRADED SAND, (SP) 2.5YR 5/8 red, fine to medium grained, medium dense, laminated		- Bentonite Chips
—	SP		43.0	POORLY GRADED SAND, (SP) 2.5YR 5/8 red, fine to medium grained, very dense, moderate cementation		
—	SP		47.0	POORLY GRADED SAND, (SP) 2.5YR 5/8 red, fine to medium grained, moist, loose		
50	SP			POORLY GRADED SAND, (SP) 2.5YR 6/8 light red, fine to medium grained, wet, loose, trace gravel		

CREATED BY: C. Mokri

CREATED DATE: 7/1/20


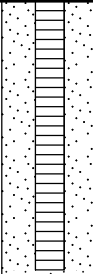
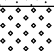

CHECKED BY: T. Holmes

CHECKED DATE: 7/6/20



FIELD BOREHOLE LOG

Well ID:MW-319
Total Depth (ft. bgs):62

DEPTH (ft)	U.S.C.S.	GRAPHIC LOG	LAYER DEPTH	MATERIAL DESCRIPTION	Environmental Data PID (ppm)	WELL DIAGRAM
50						
-	SP			POORLY GRADED SAND, (SP) 2.5YR 6/8 light red, fine to medium grained, wet, loose, trace gravel (<i>continued</i>)	1	 <div>- #10-20 Filter Sand - Sch 40 PVC 0.010 Slotted Screen</div>
-			56.0		4	
-	SW			WELL GRADED SAND, (SW) 2.5YR 6/8 light red, wet, loose, trace fine gravel	8	
-			58.0			
60	SP			POORLY GRADED SAND, (SP) 2.5YR 6/8 light red, wet, loose, trace fine gravel	0.2	
			62.0			

Bottom of borehole at 62.0 feet.



FIELD BOREHOLE LOG

Well ID: MW-320
Total Depth (ft. bgs): 36

PROJECT: OSI

PROJECT NUMBER: 10101451

SITE LOCATION: 1908 Glory Cir.

PROJECT MANAGER: T. Holmes

LOGGED BY: C. Mokri

DATE STARTED: 6/2/20

DATE COMPLETED: 6/3/20

DRILLING CONTRACTOR: Cascade

DRILLER: J. Asua

METHOD/RIG: Sonic TS150CC

HOLE DIAMETER (IN): 6

GROUND SURFACE ELEVATION (NAVD): 269.2

DEPTH TO WATER (ft. btoc): 16.38 on 6/15/2020

BOREHOLE USE: Monitoring Well

NOTES: PID measurement indicated where greater than 0. Well installed on 6/3, pad installed on 6/3 and well developed on 6/12.

DEPTH (ft)	U.S.C.S.	GRAPHIC LOG	LAYER DEPTH	MATERIAL DESCRIPTION	Environmental Data PID (ppm)	WELL DIAGRAM
0						Casing Top Elev: 269 (ft)
	SM		5.0	SANDY SILT, (SM) 2.5YR 5/2 weak red, fine grained, dry, soft, non plastic, low dry strength		- Sch 40 PVC Blank Casing
	ML		8.0	SILT, (ML) 2.5YR 6/4 light reddish brown, dry, medium stiff, non plastic, medium dry strength, some fine sand		- Cement-Bentonite Grout
10	CL		13.0	LEAN CLAY, (CL) 2.5YR 6/2 pale red, dry, medium stiff, low plasticity, trace sand	1.4	
	CL		17.0	LEAN CLAY, (CL) 2.5YR 6/3 light reddish brown, dry, medium stiff, medium plasticity, trace fine gravel		
	CL		19.0	LEAN CLAY, (CL) dry, stiff, medium plasticity, some sand		- Bentonite Chips
20	CL		23.0	LEAN CLAY WITH GRAVEL, (CL) 2.5YR 6/1 reddish gray, very stiff, medium plasticity, with sand		
	SW		26.0	WELL GRADED SAND WITH GRAVEL, (SW) rounded, wet, loose, trace clay		
	SW		27.0	WELL GRADED SAND WITH GRAVEL, (SW) 2.5YR 6/4 light reddish brown, wet, loose	0.4	
	SP		29.0	POORLY GRADED SAND, (SP) fine to medium grained, wet, loose, some gravel	1.4	
30	SP		31.0	POORLY GRADED SAND WITH GRAVEL, (SP) 2.5YR 7/3 light reddish brown, wet, loose		
	SW		32.0	WELL GRADED SAND, (SW) 2.5YR 7/3 light reddish brown, wet, loose		- #10-20 Filter Sand
	CH		34.0	FAT CLAY, (CH) 5YR 7/3 pink, wet, soft, high plasticity		- Sch 40 PVC 0.010 Slotted Screen
	SW		36.0	WELL GRADED SAND, (SW) 5YR 5/3 reddish brown, wet, very loose, with fine to medium gravel		

Bottom of borehole at 36.0 feet.



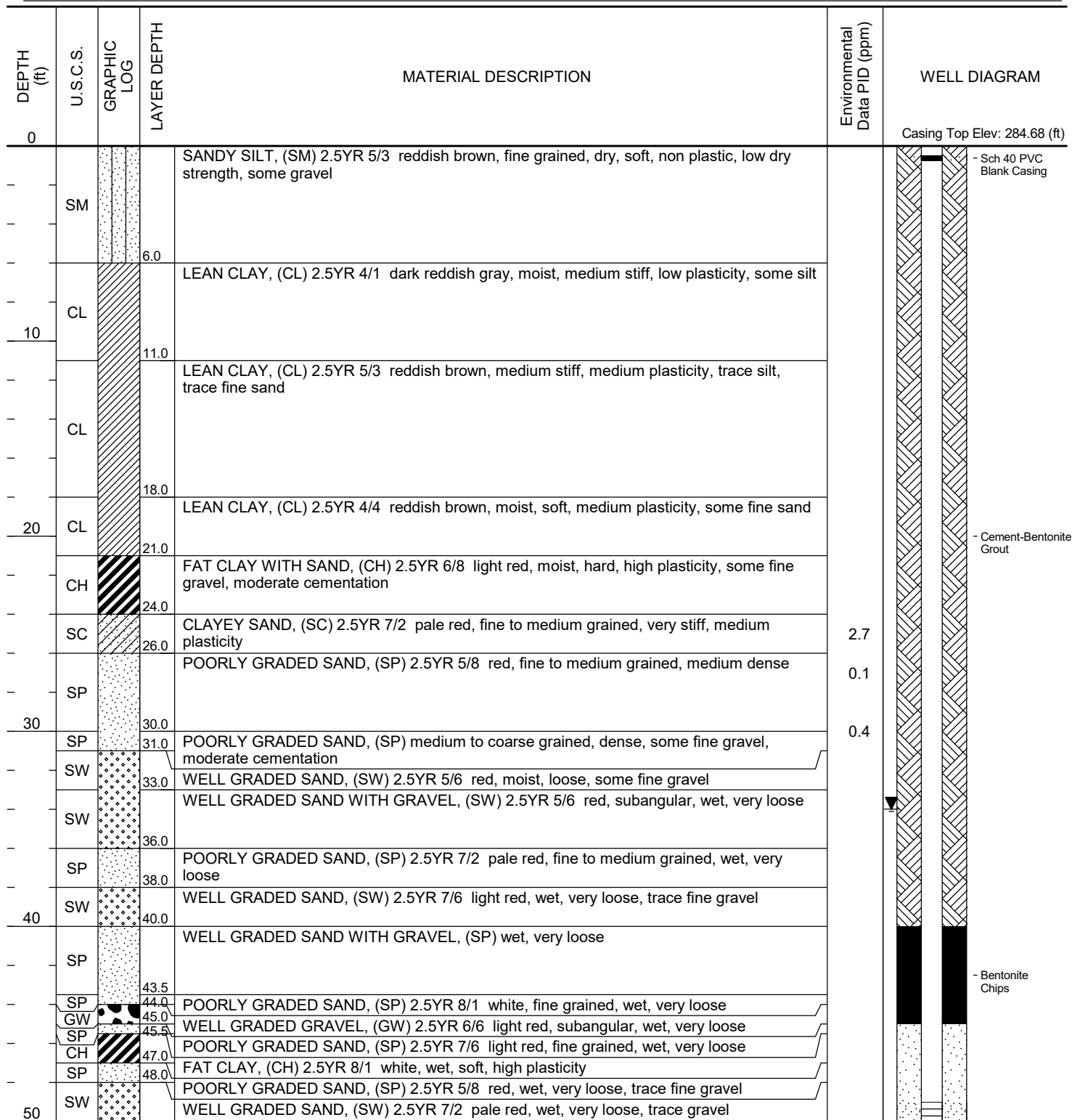
FIELD BOREHOLE LOG

Well ID: MW-321
Total Depth (ft. bgs): 60

PROJECT: OSI
PROJECT NUMBER: 10101451
SITE LOCATION: 1888 Glory Cir.
PROJECT MANAGER: T. Holmes
LOGGED BY: C. Mokri
DATE STARTED: 6/3/20
DATE COMPLETED: 6/3/20

DRILLING CONTRACTOR: Cascade
DRILLER: J. Asua
METHOD/RIG: Sonic TS150CC
HOLE DIAMETER (IN): 6
GROUND SURFACE ELEVATION (NAVD): 284.9
DEPTH TO WATER (ft. btoc): 33.99 on 6/15/2020
BOREHOLE USE: Monitoring Well

NOTES: PID measurement indicated where greater than 0. Well installed on 6/3, pad installed on 6/5 and well developed on 6/11.



CREATED BY: C. Mokri
CREATED DATE: 7/1/20

CHECKED BY: T. Holmes
CHECKED DATE: 7/6/20



FIELD BOREHOLE LOG

Well ID:MW-321
Total Depth (ft. bgs):60

DEPTH (ft)	U.S.C.S.	GRAPHIC LOG	LAYER DEPTH	MATERIAL DESCRIPTION	Environmental Data PID (ppm)	WELL DIAGRAM
50						
	SW		51.5	WELL GRADED SAND, (SW) 2.5YR 7/2 pale red, wet, very loose, trace gravel (<i>continued</i>)		
-	CH		52.0	FAT CLAY, (CH) 2.5YR 8/2 pinkish white, wet, soft, high plasticity		
-	SW		54.0	WELL GRADED SAND, (SW) 2.5YR 6/4 light reddish brown, wet, very loose		
-						
-	SP			POORLY GRADED SAND, (SP) 2.5YR 7/6 light red, fine to medium grained, wet, very loose		
-						
60			60.0			

Bottom of borehole at 60.0 feet.



FIELD BOREHOLE LOG

Well ID: MW-322
Total Depth (ft. bgs): 70

PROJECT: OSI

PROJECT NUMBER: 10101451

SITE LOCATION: Hayes and Boyle Ave

PROJECT MANAGER: T. Holmes

LOGGED BY: C. Mokri

DATE STARTED: 6/3/20

DATE COMPLETED: 6/4/20

DRILLING CONTRACTOR: Cascade

DRILLER: J. Asua

METHOD/RIG: Sonic TS150CC

HOLE DIAMETER (IN): 6

GROUND SURFACE ELEVATION (NAVD): 286.9

DEPTH TO WATER (ft. btoc): 42.98 on 6/14/2020

BOREHOLE USE: Monitoring Well

NOTES: PID measurement indicated where greater than 0. Well installed on 6/4, pad installed on 6/7 and well developed on 6/10.

DEPTH (ft)	U.S.C.S.	GRAPHIC LOG	LAYER DEPTH	MATERIAL DESCRIPTION	Environmental Data PID (ppm)	WELL DIAGRAM
0						Casing Top Elev: 286.63 (ft)
1	ML			SILT WITH SAND, (ML) 2.5YR 6/2 pale red, dry, soft, non plastic, low dry strength		- Sch 40 PVC Blank Casing
4			4.0			
5	ML			SILT, (ML) 2.5YR 6/4 light reddish brown, dry, soft, non plastic, low dry strength, some fine sand, trace clay	0.8	
7			7.0			
8	ML			SILT, (ML) 2.5YR 3/2 dusky red, dry, medium stiff, low dry strength, trace fine sand, some clay	0.4	- Cement-Bentonite Grout
9			9.0			
10	CL		10.0	LEAN CLAY, (CL) 2.5YR 3/2 dusky red, dry, medium stiff, and silt, some fine sand		
11				LEAN CLAY, (CL) 2.5YR 5/3 reddish brown, medium stiff, medium plasticity		
12	CL					
13						
14	CL			LEAN CLAY, (CL) 2.5YR 5/6 red, very stiff, low plasticity, some fine sand, lignite		
15			15.0			
16	CL					
17						
18	SC		21.0	CLAYEY SAND, (SC) 2.5YR 5/8 red, medium grained, moist, soft, medium plasticity		
19			22.0	CLAYEY SAND, (SC) 2.5YR 4/8 red, medium grained, moist, medium stiff, medium plasticity		
20	SC					
21						
22	SP		26.0	POORLY GRADED SAND, (SP) 2.5YR 4/8 red, medium grained, moist, loose, some clay		
23			28.0	POORLY GRADED SAND, (SP) 2.5YR 4/8 red, medium grained, moist, loose		
24	SP					
25			31.0	POORLY GRADED SAND, (SP) 10R 4/8 red, fine to medium grained, moist, hard, weak cementation		
26	SP					
27			34.0	POORLY GRADED SAND, (SP) 10R 5/8 red, fine to medium grained, moist, loose	0.2	
28	SP					
29			36.0	POORLY GRADED SAND, (SP) 10R 6/8 light red, fine grained, moist, loose	1.5	
30	SP					
31					1.2	
32	SP					
33						
34	SP					
35						
36	SP					
37						
38	SP					
39						
40	SP					

CREATED BY: C. Mokri

CREATED DATE: 6/30/20

CHECKED BY: T. Holmes

CHECKED DATE: 7/6/20



FIELD BOREHOLE LOG

Well ID: MW-322
Total Depth (ft. bgs): 70

DEPTH (ft)	U.S.C.S.	GRAPHIC LOG	LAYER DEPTH	MATERIAL DESCRIPTION	Environmental Data PID (ppm)	WELL DIAGRAM
40						
-	SP		41.0	POORLY GRADED SAND, (SP) 10R 6/8 light red, fine grained, moist, loose (<i>continued</i>)		
-	SP			POORLY GRADED SAND, (SP) 2.5YR 7/6 light red, fine to medium grained, wet, loose	0.8	
-			43.0			
-	SP			POORLY GRADED SAND, (SP) 2.5YR 7/6 light red, fine to medium grained, wet, very loose	0.5	
45			45.0			
-	SW			WELL GRADED SAND WITH GRAVEL, (SW) 2.5YR 7/4 light reddish brown, wet, loose	0.3	
-			49.0			
50	SP		50.0	POORLY GRADED SAND, (SP) 2.5YR 8/3 pink, fine to medium grained, wet, loose, no gravel		
-	SP		50.5			
-	CH		52.0	POORLY GRADED SAND, (SP) 2.5YR 8/1 white, fine grained, wet, very loose, 1in thick high plasticity clay interbed		- Bentonite Chips
-				FAT CLAY, (CH) 2.5YR 8/2 pinkish white, wet, soft, high plasticity		
-	SP			POORLY GRADED SAND, (SP) 2.5YR 6/6 light red, fine to medium grained, wet, very loose		
-			54.0			
55				POORLY GRADED SAND, (SP) 2.5YR 7/1 light reddish gray, wet, very loose, trace gravel		
-	SP					
-			60.0			
60				WELL GRADED SAND, (SW) 2.5YR 7/6 light red, wet, very loose		- #10-20 Filter Sand
-	SW		62.0			
-				POORLY GRADED SAND, (SP) 2.5YR 6/6 light red, wet, very loose		- Sch 40 PVC 0.010 Slotted Screen
-	SP					
65			66.0			
-				POORLY GRADED SAND, (SP) 2.5YR 6/6 light red, fine to medium grained, wet, very loose		
-	SP					
70			70.0			

Bottom of borehole at 70.0 feet.



FIELD BOREHOLE LOG

Well ID: MW-323
Total Depth (ft. bgs): 60

PROJECT: OSI

PROJECT NUMBER: 10101451

SITE LOCATION: 1740 Dunn Ave.

PROJECT MANAGER: T. Holmes

LOGGED BY: C. Mokri

DATE STARTED: 6/5/20

DATE COMPLETED: 6/6/20

DRILLING CONTRACTOR: Cascade

DRILLER: J. Asua

METHOD/RIG: Sonic TS150CC

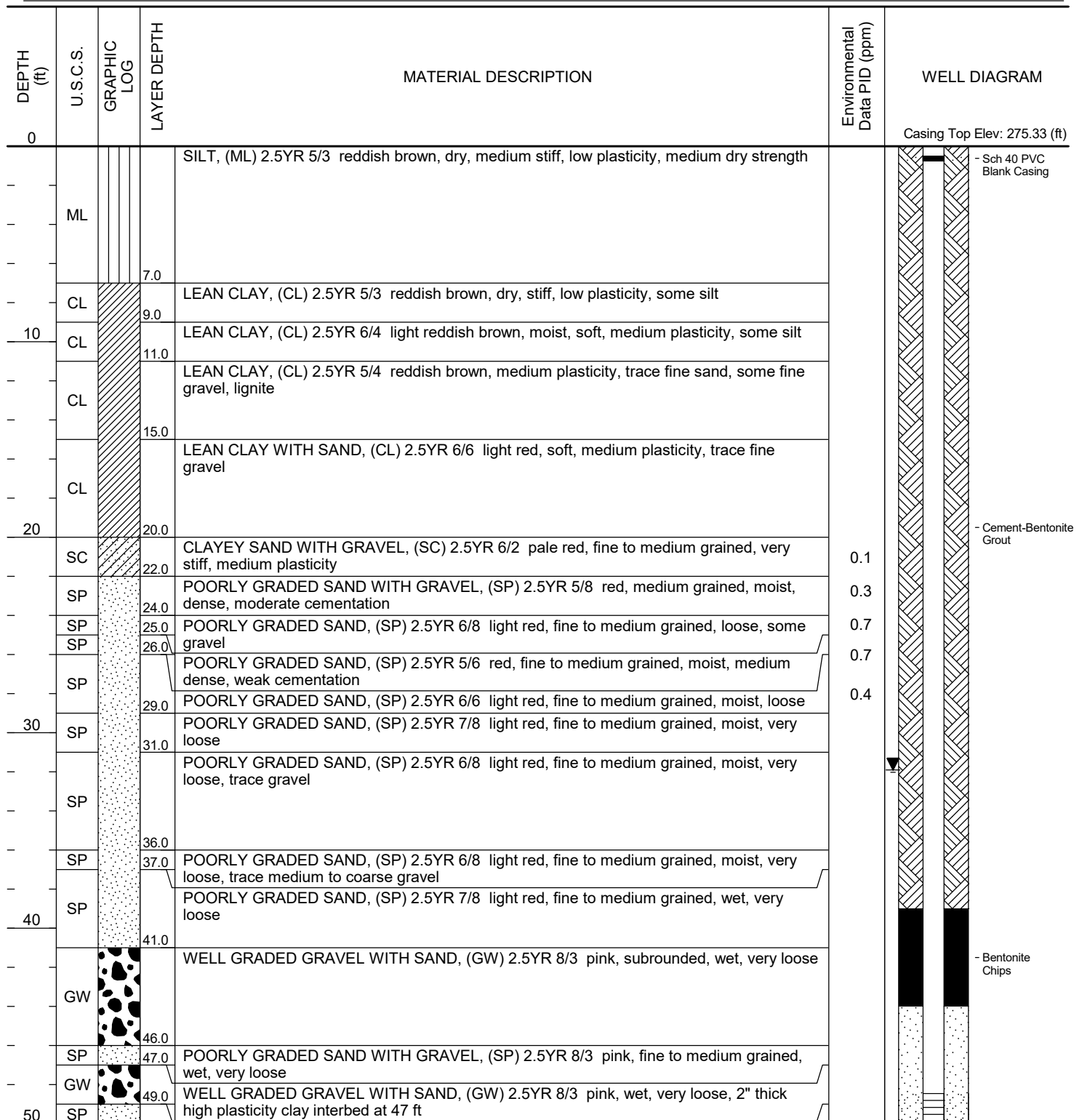
HOLE DIAMETER (IN): 6

GROUND SURFACE ELEVATION (NAVD): 275.8

DEPTH TO WATER (ft. btoc): 31.9 on 6/16/2020

BOREHOLE USE: Monitoring Well

NOTES: PID measurement indicated where greater than 0. Well installed on 6/6, pad installed on 6/9 and well developed on 6/13.



CREATED BY: C. Mokri

CREATED DATE: 6/30/20

CHECKED BY: T. Holmes

CHECKED DATE: 7/6/20



FIELD BOREHOLE LOG

Well ID:MW-323
Total Depth (ft. bgs):60

DEPTH (ft)	U.S.C.S.	GRAPHIC LOG	LAYER DEPTH	MATERIAL DESCRIPTION	Environmental Data PID (ppm)	WELL DIAGRAM
50						
	SP		51.0	POORLY GRADED SAND, (SP) 2.5YR 8/1 white, fine to medium grained, wet, very loose <i>(continued)</i>		
	SP			POORLY GRADED SAND, (SP) 2.5YR 6/8 light red, fine to medium grained, wet, very loose		
			56.0			
	SP		58.0	POORLY GRADED SAND, (SP) 2.5YR 8/2 pinkish white, fine to medium grained, wet, very loose		
	SP		59.0	POORLY GRADED SAND, (SP) 2.5YR 8/2 pinkish white, fine to medium grained, wet, very loose, some medium to coarse gravel		
60	SP		60.0	POORLY GRADED SAND, (SP) 2.5YR 8/2 pinkish white, fine to medium grained, wet, very loose, no gravel		
Bottom of borehole at 60.0 feet.						



FIELD BOREHOLE LOG

Well ID: MW-324
Total Depth (ft. bgs): 70PROJECT: OSIPROJECT NUMBER: 10101451SITE LOCATION: Near intersection of McClean and PersonPROJECT MANAGER: T. HolmesLOGGED BY: C. MokriDATE STARTED: 6/6/20DATE COMPLETED: 6/6/20DRILLING CONTRACTOR: CascadeDRILLER: J. AsuaMETHOD/RIG: Sonic TS150CCHOLE DIAMETER (IN): 6GROUND SURFACE ELEVATION (NAVD): 279.14DEPTH TO WATER (ft. btoc): 35.63 on 6/14/2020BOREHOLE USE: Monitoring WellNOTES: PID measurement indicated where greater than 0. Well installed on 6/7, pad installed on 6/8 and well developed on 6/11.








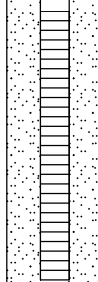
DEPTH (ft)	U.S.C.S.	GRAPHIC LOG	LAYER DEPTH	MATERIAL DESCRIPTION	Environmental Data PID (ppm)	WELL DIAGRAM
0						Casing Top Elev: 278.7 (ft)
	ML			SILT, (ML) 2.5YR 6/6 light red, dry, soft, non plastic, low dry strength, trace fine sand		- Sch 40 PVC Blank Casing
			4.0			
	CL		5.0	LEAN CLAY, (CL) dry, low plasticity, low dry strength, some silt, some fine sand		
	ML		7.0	SILT, (ML) 2.5YR 5/3 reddish brown, dry, soft, non plastic, low dry strength		
	CL			LEAN CLAY, (CL) 2.5YR 4/4 reddish brown, dry, soft, low plasticity, some silt, trace fine sand		
10			10.0			
	CL		11.0	LEAN CLAY, (CL) 2.5YR 4/4 reddish brown, dry, medium stiff, low plasticity, some silt, trace fine sand		
	CL			LEAN CLAY WITH SAND, (CL) 2.5YR 5/6 red, dry, soft, medium plasticity		
			14.0			
	SC			CLAYEY SAND, (SC) 2.5YR 3/6 dark red, fine to medium grained, dry, very stiff, medium plasticity		
			17.0			
	SP			POORLY GRADED SAND WITH CLAY, (SP) 2.5YR 4/8 red, fine to medium grained, loose		
			19.0			
20				POORLY GRADED SAND, (SP) 2.5YR 4/8 red, fine to medium grained, dry, loose, trace gravel		
	SP					
			23.0			
	SP			POORLY GRADED SAND, (SP) 2.5YR 4/8 red, fine to medium grained, dry, loose, trace gravel, weak cementation		
			25.0			
	SP			POORLY GRADED SAND, (SP) 2.5YR 4/8 red, fine to medium grained, dry, loose		
			29.0			
30				POORLY GRADED SAND, (SP) 2.5YR 4/8 red, fine to medium grained, moist, loose		
	SP					
			37.0			
	SP			POORLY GRADED SAND, (SP) 2.5YR 7/4 light reddish brown, fine to medium grained, moist, very loose		
40			41.0			
	SP		42.0	POORLY GRADED SAND, (SP) 5YR 6/4 light reddish brown / light brown, fine to medium grained, wet, very loose		
				WELL GRADED SAND, (SW) 5YR 7/4 pink, wet, very loose, trace gravel		
	SW		45.0			
				POORLY GRADED SAND, (SP) 5YR 7/4 pink, fine to medium grained, wet, very loose		
	SP		48.0			
				WELL GRADED GRAVEL, (GW) 5YR 7/4 pink, wet, very loose		
50	GW		50.0			

CREATED BY: C. MokriCREATED DATE: 6/30/20CHECKED BY: T. HolmesCHECKED DATE: 7/6/20



FIELD BOREHOLE LOG

Well ID: MW-324
Total Depth (ft. bgs): 70

DEPTH (ft)	U.S.C.S.	GRAPHIC LOG	LAYER DEPTH	MATERIAL DESCRIPTION	Environmental Data PID (ppm)	WELL DIAGRAM
50						
	SW			WELL GRADED SAND WITH GRAVEL, (SW) 5YR 7/4 pink, wet, very loose		 - Bentonite Chips
	CH		54.7 55.6	FAT CLAY, (CH) 5YR 8/1 white / pinkish gray, wet, medium stiff, high plasticity		
	SP			POORLY GRADED SAND, (SP) 5YR 8/2 pinkish white, fine grained, wet, loose		
	GW		58.0 59.0	WELL GRADED GRAVEL, (GW) 7.5YR 7/6 reddish yellow, wet, very loose		
60	SP		60.0	POORLY GRADED SAND, (SP) 7.5YR 7/6 reddish yellow, fine grained, wet, very loose		
	SW			WELL GRADED SAND, (SW) 7.5YR 7/6 reddish yellow, wet, very loose		 - #10-20 Filter Sand - Sch 40 PVC 0.010 Slotted Screen
70			70.0			

Bottom of borehole at 70.0 feet.



FIELD BOREHOLE LOG

Well ID: MW-325
Total Depth (ft. bgs): 70PROJECT: OSIPROJECT NUMBER: 10101451SITE LOCATION: NE end of McClean Blvd.PROJECT MANAGER: T. HolmesLOGGED BY: C. MokriDATE STARTED: 6/7/20DATE COMPLETED: 6/7/20DRILLING CONTRACTOR: CascadeDRILLER: J. AsuaMETHOD/RIG: Sonic TS150CCHOLE DIAMETER (IN): 6GROUND SURFACE ELEVATION (NAVD): 284.53DEPTH TO WATER (ft. btoc): 34.21 on 6/14/2020BOREHOLE USE: Monitoring WellNOTES: PID measurement indicated where greater than 0. Well installed on 6/7, pad installed on 6/8 and well developed on 6/12.

DEPTH (ft)	U.S.C.S.	GRAPHIC LOG	LAYER DEPTH	MATERIAL DESCRIPTION	Environmental Data PID (ppm)	WELL DIAGRAM
0						Casing Top Elev: 284.33 (ft)
			1.0	Asphalt and aggregate base		
	ML			SILT, (ML) 2.5YR 4/4 reddish brown, dry, soft, non plastic, low dry strength, some sand		- Sch 40 PVC Blank Casing
			4.0			
	ML			SILT, (ML) 2.5YR 6/4 light reddish brown, dry, soft, low plasticity, some clay		
			7.0			
	CL			LEAN CLAY, (CL) 2.5YR 5/6 red, moist, very soft, medium plasticity		
10			11.0			
	CL			LEAN CLAY, (CL) 2.5YR 5/6 red, moist, medium stiff, medium plasticity, some fine sand		
			16.0			
	CL			LEAN CLAY, (CL) 2.5YR 5/6 red, moist, soft, medium plasticity		
20			21.0			
	SC			CLAYEY SAND, (SC) 2.5YR 4/8 red, medium stiff, medium plasticity		
			25.0			
	SP			POORLY GRADED SAND WITH CLAY, (SP) 2.5YR 7/4 light reddish brown, medium grained, medium dense, some gravel		- Cement-Bentonite Grout
			28.0			
30	SP			POORLY GRADED SAND, (SP) 2.5YR 6/8 light red, medium grained, moist, loose, trace clay, no gravel		
			32.0			
	SP			POORLY GRADED SAND, (SP) 2.5YR 5/8 red, fine to medium grained, wet, medium dense		
			34.0			
	SP			POORLY GRADED SAND, (SP) 2.5YR 5/8 red, fine to medium grained, loose, trace gravel		
			38.0			
40	SP			POORLY GRADED SAND, (SP) 2.5YR 5/8 red, fine to medium grained, loose, no gravel		
			43.0			
	SP			POORLY GRADED SAND, (SP) 2.5YR 7/8 light red, wet, very loose, trace gravel		
			48.0			
50	SW			WELL GRADED SAND WITH GRAVEL, (SW) 2.5YR 5/6 red, wet, very loose		

CREATED BY: C. MokriCREATED DATE: 6/30/20CHECKED BY: T. HolmesCHECKED DATE: 7/6/20



FIELD BOREHOLE LOG

Well ID: MW-325
Total Depth (ft. bgs): 70

DEPTH (ft)	U.S.C.S.	GRAPHIC LOG	LAYER DEPTH	MATERIAL DESCRIPTION	Environmental Data PID (ppm)	WELL DIAGRAM
50						
	SW		51.0			
	GW		52.0	WELL GRADED GRAVEL WITH SAND, (GW) 10YR 7/8 yellow, wet, very loose		
				WELL GRADED SAND WITH GRAVEL, (SW) 2.5YR 6/8 light red, wet, very loose, 2inch thick high plasticity clay interbed at 53 ft bgs		
	SW					
60			61.0			
	SP			POORLY GRADED SAND, (SP) 10YR 7/8 yellow, fine to medium grained, wet, very loose		
			65.0			
	SW		66.0	WELL GRADED SAND, (SW) 10YR 5/8 yellowish brown, wet, very loose		
	SP			POORLY GRADED SAND, (SP) 10YR 5/8 yellowish brown, fine to medium grained, wet, very loose, 1inch thick high plasticity clay interbed at 68ft bgs		
			69.0			
70	SP		70.0	POORLY GRADED SAND, (SP) 10YR 6/3 pale brown, fine grained, wet, very loose		

Bottom of borehole at 70.0 feet.

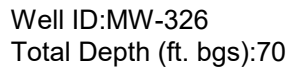


FIELD BOREHOLE LOG

Well ID: MW-326
Total Depth (ft. bgs): 70PROJECT: OSIPROJECT NUMBER: 10101451SITE LOCATION: Near SE corner of Cintas foundationPROJECT MANAGER: T. HolmesLOGGED BY: C. MokriDATE STARTED: 6/7/20DATE COMPLETED: 6/8/20DRILLING CONTRACTOR: CascadeDRILLER: J. AsuaMETHOD/RIG: Sonic TS150CCHOLE DIAMETER (IN): 6GROUND SURFACE ELEVATION (NAVD): 274.24DEPTH TO WATER (ft. btoc): 24.96 on 6/16/2020BOREHOLE USE: Monitoring WellNOTES: PID measurement indicated where greater than 0. Well installed on 6/8, pad installed on 6/9 and well developed on 6/13.

DEPTH (ft)	U.S.C.S.	GRAPHIC LOG	LAYER DEPTH	MATERIAL DESCRIPTION	Environmental Data PID (ppm)	WELL DIAGRAM
0						Casing Top Elev: 273.83 (ft)
			1.0	Asphalt and aggregate base		
	CL			LEAN CLAY, (CL) 2.5YR 5/4 reddish brown, wet, soft, low plasticity		- Sch 40 PVC Blank Casing
			6.0	LEAN CLAY, (CL) 2.5YR 3/4 dark reddish brown, moist, soft, low plasticity		
	CL					
			9.0	LEAN CLAY, (CL) 2.5YR 3/3 dark reddish brown, moist, medium stiff, low plasticity, trace fine gravel		
10	CL					
			12.0	LEAN CLAY WITH SAND, (CL) 2.5YR 5/8 red, moist, stiff, medium plasticity, trace gravel		
	CL					
			15.0	CLAYEY SAND, (SC) 2.5YR 5/6 red, fine to medium grained, moist, soft, medium plasticity, trace fine gravel		
	SC					
			18.0	CLAYEY SAND, (SC) 2.5YR 6/6 light red, medium grained, moist, soft, high plasticity, some fine gravel		
20	SC					
			21.0	POORLY GRADED SAND, (SP) 2.5YR 4/8 red, medium grained, moist, dense		
	SP					
			23.0	POORLY GRADED SAND, (SP) 2.5YR 6/6 light red, fine to medium grained, moist, dense, trace fine gravel, weak cementation		
	SP					
			25.0	POORLY GRADED SAND, (SP) 2.5YR 5/8 red, fine to medium grained, moist, loose, trace gravel		
	SP					
			27.0	POORLY GRADED SAND, (SP) 2.5YR 6/8 light red, fine to medium grained, moist, very loose		
30	SP					
			31.0	POORLY GRADED SAND, (SP) 2.5YR 6/8 light red, fine to medium grained, wet, very loose, some gravel		
	SP					
			32.0	WELL GRADED SAND, (SW) 2.5YR 6/8 light red, wet, very loose, some coarse gravel		
	SW					
			36.0	WELL GRADED GRAVEL, (GW) 2.5YR 6/4 light reddish brown, wet, very loose, some medium to coarse sand		
	GW					
			38.0	POORLY GRADED GRAVEL, (GP) 2.5YR 6/4 light reddish brown, fine to medium grained, very loose		
40	GP					
			42.0	POORLY GRADED SAND, (SP) 2.5YR 6/3 light reddish brown, fine grained, wet, very loose		
	SP					
			46.0	WELL GRADED GRAVEL, (GW) 2.5YR 7/1 light reddish gray, wet, very loose		
	GW					
			47.0	POORLY GRADED SAND, (SP) 2.5YR 7/4 light reddish brown, fine to medium grained, wet, very loose, no gravel		
	SP					
50						

CREATED BY: C. MokriCREATED DATE: 6/30/20CHECKED BY: T. HolmesCHECKED DATE: 7/6/20



Bottom of borehole at 70.0 feet.



FIELD BOREHOLE LOG

Well ID: MW-327
Total Depth (ft. bgs): 70PROJECT: OSIPROJECT NUMBER: 10101451SITE LOCATION: W. of Cintas foundationPROJECT MANAGER: T. HolmesLOGGED BY: C. MokriDATE STARTED: 6/8/20DATE COMPLETED: 6/8/20DRILLING CONTRACTOR: CascadeDRILLER: J. AsuaMETHOD/RIG: Sonic TS150CCHOLE DIAMETER (IN): 6GROUND SURFACE ELEVATION (NAVD): 273.3DEPTH TO WATER (ft. btoc): 24.5 on 6/16/2020BOREHOLE USE: Monitoring WellNOTES: PID measurement indicated where greater than 0. Well installed on 6/8, pad installed on 6/9 and well developed on 6/13.





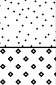

DEPTH (ft)	U.S.C.S.	GRAPHIC LOG	LAYER DEPTH	MATERIAL DESCRIPTION	Environmental Data PID (ppm)	WELL DIAGRAM
0						Casing Top Elev: 272.91 (ft)
	CL			LEAN CLAY, (CL) 2.5YR 6/3 light reddish brown, moist, soft, low plasticity, low dry strength, with silt, some sand		- Sch 40 PVC Blank Casing
			7.0			
	CL			LEAN CLAY, (CL) 2.5YR 6/3 light reddish brown, moist, soft, medium plasticity		
10			12.0			
	CL			LEAN CLAY, (CL) 2.5YR 3/3 dark reddish brown, moist, medium stiff, medium plasticity, trace fine gravel		
			18.0			
	CL			LEAN CLAY WITH SAND, (CL) 2.5YR 7/1 light reddish gray, medium plasticity, some fine gravel, lignite		
20			21.0			
	SC			CLAYEY SAND, (SC) 2.5YR 6/8 light red, medium grained, moist, medium plasticity, trace coarse gravel		- Cement-Bentonite Grout
			23.0			
	SP			POORLY GRADED SAND, (SP) 10YR 6/6 brownish yellow / dark yellowish orange, fine to medium grained, moist, loose		
30			32.0			
	SP			POORLY GRADED SAND, (SP) 10YR 6/6 brownish yellow / dark yellowish orange, fine to medium grained, wet, loose, trace gravel		
			36.0			
	GW			WELL GRADED GRAVEL WITH SAND, (GW) 10YR 5/6 yellowish brown, wet, very loose		
40			41.0			
	SW			WELL GRADED SAND, (SW) 2.5YR 6/8 light red, wet, very loose, some fine to medium gravel		
			45.0			
	SP			POORLY GRADED SAND, (SP) fine to medium grained, wet, very loose, trace gravel		
			47.0			
	SW			WELL GRADED SAND, (SW) 2.5YR 7/8 light red, fine to medium grained, wet, very loose		
			48.0			
	SP			POORLY GRADED SAND, (SP) 2.5YR 7/8 light red, fine to medium grained, wet, very loose, no gravel		
50						- Bentonite Chips

CREATED BY: C. MokriCREATED DATE: 7/1/20CHECKED BY: T. HolmesCHECKED DATE: 7/6/20



FIELD BOREHOLE LOG

Well ID: MW-327
Total Depth (ft. bgs): 70

DEPTH (ft)	U.S.C.S.	GRAPHIC LOG	LAYER DEPTH	MATERIAL DESCRIPTION	Environmental Data PID (ppm)	WELL DIAGRAM
50						
	SP		51.0			
	SW		55.0	WELL GRADED SAND, (SW) 10YR 7/6 yellow, very loose		
	SP		60.0	POORLY GRADED SAND, (SP) 10YR 7/6 yellow, fine to medium grained, very loose		
60						
	SP		64.0	POORLY GRADED SAND, (SP) 10YR 7/6 yellow, fine to medium grained, very loose, trace gravel		
	SW		66.5	WELL GRADED SAND, (SW) 5YR 7/6 reddish yellow, wet, very loose, some gravel		
	CH		70.0	FAT CLAY, (CH) 10YR 7/6 yellow, moist, very stiff, high plasticity, high toughness		
70						

- #10-20 Filter Sand

- Sch 40 PVC 0.010 Slotted Screen

- Bentonite Chips

Bottom of borehole at 70.0 feet.