



FIELD BOREHOLE LOG

Well ID: MW-309
Total Depth (ft. bgs): 141

PROJECT: SRI Phase 4

PROJECT NUMBER: 10058697

SITE LOCATION: N. of Barnhart

PROJECT MANAGER: T. Holmes

LOGGED BY: C. Mokri

DATE STARTED: 9/23/19

DATE COMPLETED: 9/26/19

DRILLING CONTRACTOR: Cascade

DRILLER: T. Taylor

METHOD/RIG: Gus Pech Sonic

HOLE DIAMETER (IN): 12 to 78 ft and 6 to 141 ft

GROUND SURFACE ELEVATION (NAVD): 290.38

DEPTH TO WATER (ft. btoc): 110.51 on 12/5/2019

BOREHOLE USE: Groundwater Monitoring Well

NOTES: PID measurement indicated where greater than 0. No water used during drilling.

Well installed on 9/26, pad installed on 9/27, and well developed on 10/12.

DEPTH (ft)	U.S.C.S.	GRAPHIC LOG	LAYER DEPTH	MATERIAL DESCRIPTION	Environmental Data PID (ppm)	WELL DIAGRAM
0						Casing Top Elev: 290.31 (ft) Casing Type: 8 in. PVC
—	ML			SILT, (ML) 5YR 5/4 reddish brown, dry, medium stiff, non plastic, low dry strength, little fine sand		Sch 80 PVC Blank Casing
—	ML		6.0	SILT, (ML) 5YR 6/2 pinkish gray, moist, stiff, low plasticity		
—			9.0			
10	MH			ELASTIC SILT, (MH) 5YR 5/4 reddish brown, moist, medium stiff, medium plasticity, trace fine gravel, trace fine sand		Sch 80 PVC Conductor Casing
—	CL		12.0	LEAN CLAY, (CL) 5YR 5/4 reddish brown, moist, soft, medium plasticity		
—	CL		14.0	LEAN CLAY, (CL) 5YR 5/3 reddish brown, moist, soft, medium plasticity, trace fine gravel		
—			17.0			
—	CL			LEAN CLAY, (CL) 5YR 5/3 reddish brown, moist, medium stiff, medium plasticity, little fine sand		
20	CL		22.0	LEAN CLAY, (CL) 5YR 5/3 reddish brown, moist, stiff, medium plasticity, little fine sand		
—	CL		24.0	LEAN CLAY, (CL) 5YR 5/3 reddish brown, moist, medium stiff, medium plasticity, little fine sand		
—	CL		26.0	LEAN CLAY, (CL) 5YR 5/3 reddish brown, moist, medium stiff, medium plasticity, and medium sand		
—	SC		27.0	LEAN CLAY, (CL) 5YR 5/3 reddish brown, moist, medium stiff, medium plasticity, and medium sand		
—	SC		28.0	CLAYEY SAND, (SC) 5YR 6/2 pinkish gray, medium grained, medium stiff, medium plasticity		
30	SC			CLAYEY SAND, (SC) 5YR 6/2 pinkish gray, medium grained, stiff, medium plasticity		
—	SP		31.0	POORLY GRADED SAND, (SP) 5YR 6/6 reddish yellow, fine to medium grained, moist, medium dense, some clay		
—			34.0			
—	GW			WELL GRADED GRAVEL, (GW) 5YR 5/6 yellowish red / light brown, angular, dense, and fine to coarse sand		
—			37.0			
—	GW			WELL GRADED GRAVEL, (GW) 5YR 6/6 reddish yellow, moist, medium dense, with sand, with clay		
—			39.0			
40	SP			POORLY GRADED SAND, (SP) 5YR 6/8 reddish yellow, fine to medium grained, loose, trace fine to medium gravel		
—			42.0			
—	SW			WELL GRADED SAND, (SW) 5YR 6/4 light reddish brown / light brown, very loose, with fine to medium gravel		
—			44.0			
—	SP			POORLY GRADED SAND, (SP) 5YR 7/6 reddish yellow, fine to medium grained, little fine to medium gravel		
—			48.0			
50	SP			POORLY GRADED SAND, (SP) 7.5YR 6/8 reddish yellow, fine to medium grained, moist, loose, trace fine to medium gravel		

CREATED BY: C. Mokri

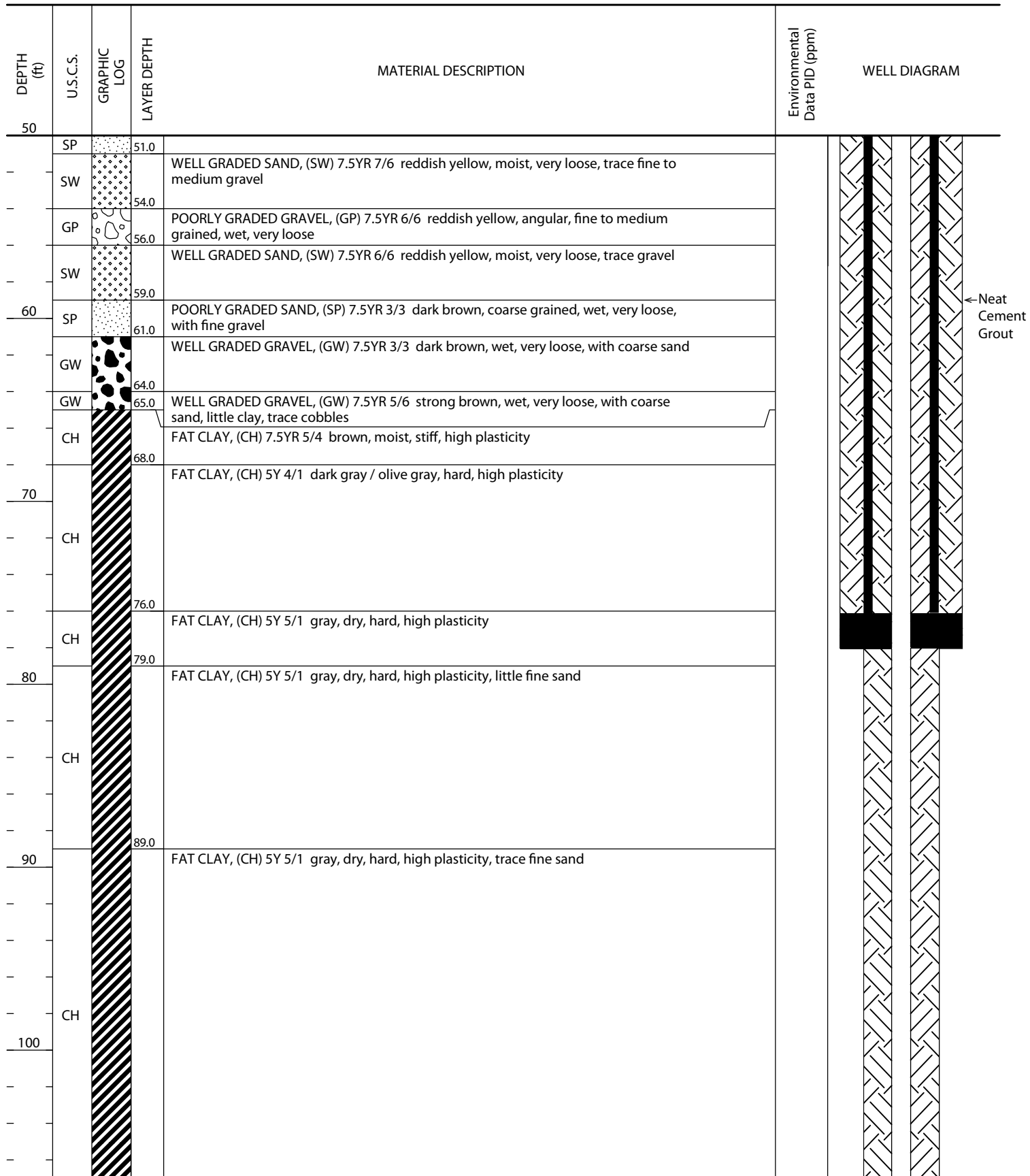
CREATED DATE: 10/15/19

CHECKED BY: T. Holmes

CHECKED DATE: 2/28/20



FIELD BOREHOLE LOG

Well ID:MW-309
Total Depth (ft. bgs):141



DEPTH (ft)	U.S.C.S.	GRAPHIC LOG	LAYER DEPTH	MATERIAL DESCRIPTION	Environmental Data PID (ppm)	WELL DIAGRAM
110	CH			FAT CLAY, (CH) 5Y 5/1 gray, dry, hard, high plasticity, trace fine sand (continued)		
120	SP		119.0	POORLY GRADED SAND, (SP) 2.5Y 5/1 gray, fine grained, moist, loose		
	SC		120.0	CLAYEY SAND, (SC) 2.5Y 5/1 gray, moist, medium stiff, medium plasticity, with fine sand		
	SC		122.0	CLAYEY SAND, (SC) 2.5Y 7/1 light gray, wet, soft, medium plasticity		
	SP		123.0	POORLY GRADED SAND, (SP) 5YR 7/8 reddish yellow, fine grained, wet, very loose		
	SP		124.0	POORLY GRADED SAND, (SP) 10YR 6/6 brownish yellow / dark yellowish orange, fine to medium grained, wet, very loose		
	SP		126.0	POORLY GRADED SAND, (SP) 5Y 7/2 light gray / yellowish gray, fine to medium grained, wet, very loose		
130	SP		129.0	POORLY GRADED SAND, (SP) 7.5YR 6/2 pinkish gray, fine to medium grained		
	CH		131.0	FAT CLAY, (CH) 2.5Y 5/1 gray, medium stiff, high plasticity		
	SP		131.5	POORLY GRADED SAND, (SP) 7.5YR 6/1 gray, fine to medium grained, wet, loose		
	CH		138.0	FAT CLAY, (CH) 2.5Y 5/1 gray, medium stiff, high plasticity		
140	SP		138.3	POORLY GRADED SAND, (SP) 7.5YR 6/1 gray, fine to medium grained, loose		
			141.0			

Bottom of borehole at 141.0 feet.