



Well Installation Diagram

Well: MW-304

Client: DDMT

Project: SRI Phase 4

Project Number: 10058697

Site Location: N. of Bldg. 649

Logged by: C. Mokri

Well Completion Date: 9/12/2019

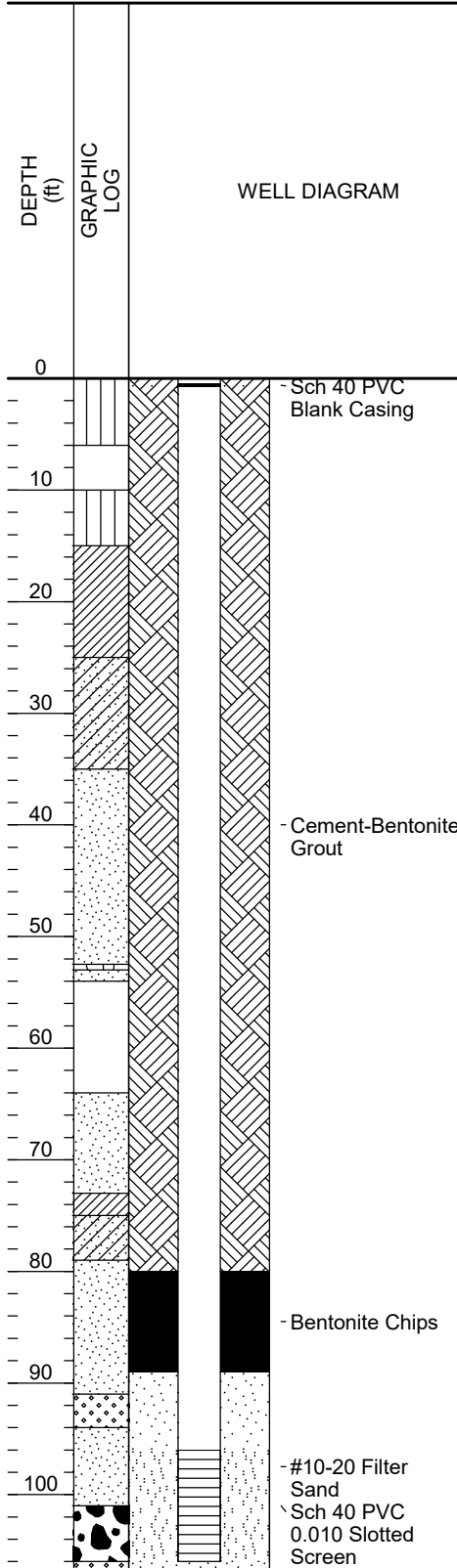
Northing: 277866.2

Easting: 803513.5

Ground Elevation (NAVD88): 305.0

Top of Screen Elevation (ft, NAVD): 208.9

Top of Casing Elevation (ft, NAVD): 304.83



Drilling Company: Cascade
Drilling Method: Gus Pech Sonic
Borehole Diameter (in): 6

Bollards: No
Well Diameter (in): 2
Well Material: SCH 40 PVC
Slot Size (in): 0.010

Type of Filter Pack: Sand
Filter Pack Gradation: #10-20
Filter Pack Quantity: 275 lbs.
Bentonite Type: 3/8 in. Chips
Bentonite Quantity: 100 lbs.

Grout Type: Type II
Grout Quantity: 150 gal.
Well Development Method: Waterra Hydrolift II
Well Development Date: 10/14/19
Depth to Water (ft. btoc): 93.12

Surface Completion: 8" Diameter Flush Mount Well Box

Pad Dimensions: 3 ft. x 3 ft.

Riser Length (ft): 96

Depth to Top of Bentonite (ft, bgs): 80.0

Depth to Top of Filter Pack (ft, bgs): 89

Length of Screen (ft): 10

Total Well Depth (ft, btoc): 106.2

Total Boring Depth (ft, btoc): 107

Created By: C. Mokri

Created Date: 9/22/19

Checked By: T. Holmes

Checked Date: 2/28/20