



Well Installation Diagram

Well: MW-303

Client: DDMT

Project: SRI Phase 4

Project Number: 10058697

Site Location: N. of Bldg. 249

Logged by: C. Mokri

Well Completion Date: 9/10/2019

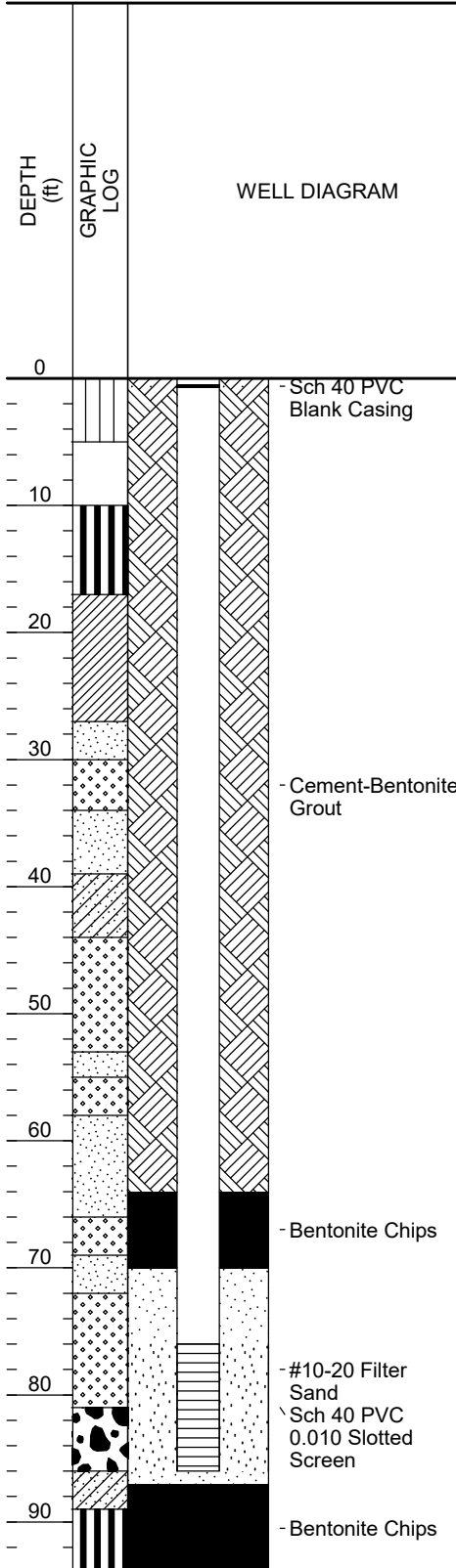
Northing: 277667.3

Easting: 806230.1

Ground Elevation (NAVD88): 305.4

Top of Screen Elevation (ft, NAVD): 228.7

Top of Casing Elevation (ft, NAVD): 305.33



Drilling Company: Cascade

Drilling Method: Gus Pech Sonic

Borehole Diameter (in): 6

Bollards: No

Well Diameter (in): 2

Well Material: SCH 40 PVC

Slot Size (in): 0.010

Type of Filter Pack: Sand

Filter Pack Gradation: #10-20

Filter Pack Quantity: 400 lbs.

Bentonite Type: 3/8 in. Chips

Bentonite Quantity: 200 lbs.

Grout Type: Type II

Grout Quantity: 125 gal.

Well Development Method: Waterra Hydrolift II

Well Development Date: 11/4/19

Depth to Water (ft. btoc): 69.41

Surface Completion: 8" Diameter Flush Mount Well Box

Pad Dimensions: 3 ft. x 3 ft.

Riser Length (ft): 76.6

Depth to Top of Bentonite (ft, bgs): 64.0

Depth to Top of Filter Pack (ft, bgs): 70

Length of Screen (ft): 10

Total Well Depth (ft, btoc): 86.9

Total Boring Depth (ft, btoc): 94

Created By: C. Mokri

Created Date: 10/1/19

Checked By: T. Holmes

Checked Date: 2/28/20