

# FIELD BOREHOLE LOG

BOREHOLE NO.: MW-256

TOTAL DEPTH: 145

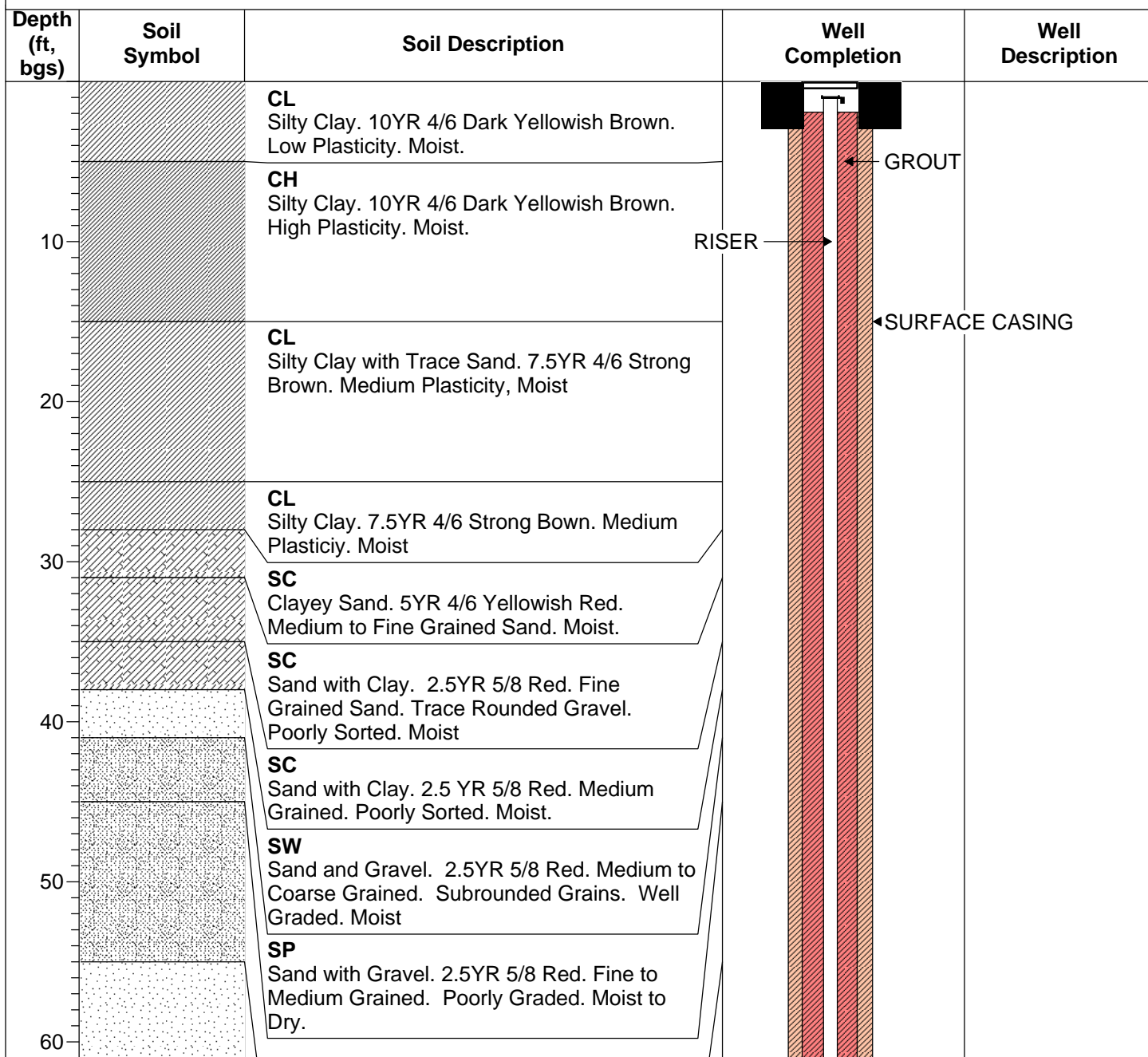
## PROJECT INFORMATION

**PROJECT:** IAQ Drilling  
**PROJECT NO.:** 121803-008  
**SITE LOCATION:** Main Installation  
**PROJECT MANAGER:** T. Holmes  
**FIELD STAFF:** K. Sedlak  
**BOREHOLE STARTED:** 7/13/2010  
**BOREHOLE FINISHED:** 7/16/2010

## DRILLING INFORMATION

**DRILLING CO.:** Boart Longyear  
**DRILLER:** S. Gautney  
**DRILLING METHOD/RIG:** Sonic  
**BOREHOLE DIAMETER:** 6x10 and 4x6  
**GROUND SURFACE ELEVATION:** 293.40  
**WATER DEPTH/ DATE:** 130.75 on 7/21/2010  
**BOREHOLE USE:** Monitoring Well

**NOTES:** Surface casing installed to 79 feet bgs, approximately 10 feet into upper clay. Boring drilled to 145 feet; borehole washed to 147 feet bgs during well installation.



Created By: WTR

Checked By: JBS



# FIELD BOREHOLE LOG

BOREHOLE NO.: MW-256

TOTAL DEPTH: 145

Depth	Soil Symbol	Soil Description	Well Completion	Well Description
		<b>SP</b> Sand with Gravel. 5YR 6/8 Reddish Yellow. Fine to Medium Grained Sand. Subangular Gravel. Poorly Graded. Moist		
		<b>SW</b> Sand and Gravel. 5YR 5/8 Red. Sand is Medium to Coarse Grained. Angular to Subangular Gravel. Well Graded. Dry.		
70		<b>SP</b> Sand. 10YR 6/3 Pale Brown. Medium to Coarse Grained. Poorly Graded. Wet.		
		<b>CH</b> Silty Clay. 10YR 4/1 Dark Grey. Medium to High Plasticity. Moist		
80		<b>No Recovery</b>		
		<b>CH</b> Silty Clay. 10YR 4/1 Dark Grey. Medium to High Plasticity. Moist		
		<b>CH</b> Silty Clay. 10YR 4/1 Dark Grey. High Plasticity. Moist		
90				
100				
		<b>ML</b> Sandy Clay. 2.5 YR 4/1 Dark Grey. Very Silty. Fine Grained Sand. Moist		
110		<b>SC</b> Clayey Sand. 2.5YR 5/1 Grey. Fine Grained. Moist.		
120			<b>BENTONITE</b> →	

Created By: WTR

Checked By: JBS


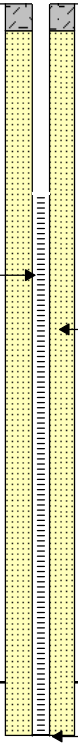
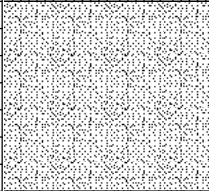
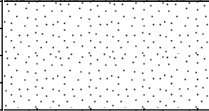
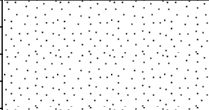


PAGE: 2 of 3



# FIELD BOREHOLE LOG

BOREHOLE NO.: MW-256

TOTAL DEPTH: 145

Depth	Soil Symbol	Soil Description	Well Completion	Well Description
130			 SCREEN 130.75-ft SAND PACK END CAP	
		<b>SP</b> Sand. 5YR 5/8 Yellowish Red. Fine Grained. Poorly Sorted. Dry.		
		<b>SW</b> Sand. 10YR 6/6 Brownish Yellow. Medium Grained. Poorly Sorted. Moist.		
		<b>SW</b> Sand. 10YR 6/2 Light Brownish Grey. Medium Grained. Poorly Sorted. Wet.		
140		<b>CH</b> Silty Clay. 10YR 6/1 Grey. High Plasticity. Moist.		
		<b>SW</b> Sand. 10YR 6/2 Light Brownish Grey. Medium Grained. Poorly Sorted. Wet.		
150		End of Log		
160				
170				
180				

Created By: WTR

Checked By: JBS

PAGE: 3 of 3