

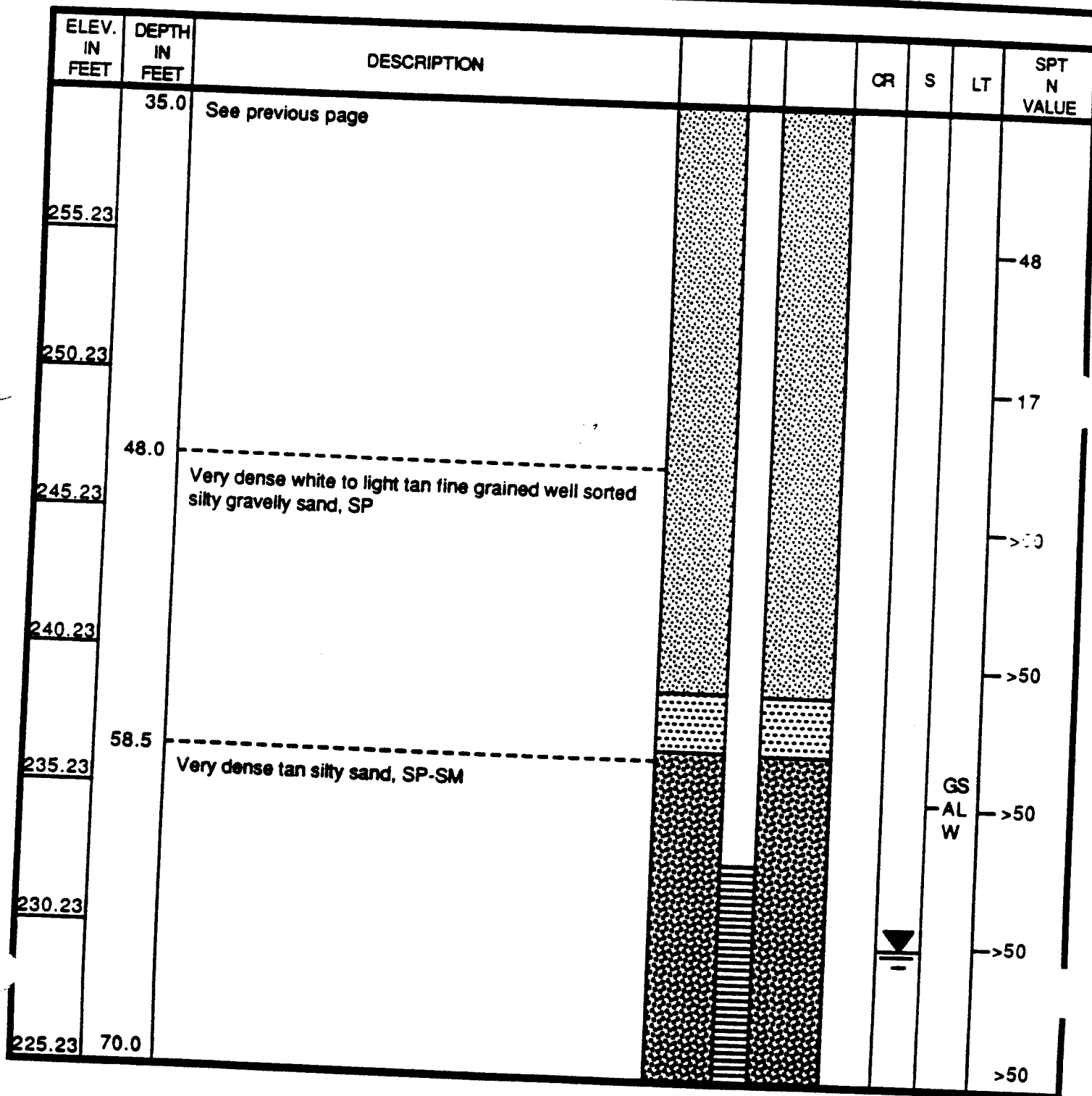
Law Environmental, Inc.
Government Services Division
TEST BORING RECORD

BORING NUMBER <u> MW-15 </u> JOB NUMBER <u> 11-8531-01 </u> DATE STARTED <u> 3-18-89 </u> DATE COMPLETED <u> 3-19-89 </u> DRILLED BY <u> CN </u> LOGGED BY <u> RM </u> CHECKED BY <u> RM </u>	REMARKS: PAGE <u> 1 </u> OF <u> 3 </u> 7 1/4" Hollow Stem Auger Split Spoon Sampling 0 - 30' sampler was hydraulically pushed, SPT N Values taken from 35 - 80'
---	--

ELEV. IN FEET	DEPTH IN FEET	DESCRIPTION				CR	S	LT	SPT N VALUE
295.23	0.0	Tan to brown CLAY mottled in places, CL							
290.23									
285.23									
280.23									
275.23									
270.23									
265.23	28.5	CL							
	30.0	Orange fine grained well sorted silty SAND, SM							
		Orange fine grained well sorted silty gravelly SAND, SC-SP						GS AL W	
260.23	35.0								

Law Environmental, Inc.
Government Services Division
TEST BORING RECORD

BORING NUMBER <u> MW-15 </u> JOB NUMBER <u> 11-8531-01 </u> DATE STARTED <u> 3-18-89 </u> DATE COMPLETED <u> 3-19-89 </u> DRILLED BY <u> CN </u> LOGGED BY <u> RM </u> CHECKED BY <u> RM </u>	REMARKS: PAGE <u>2</u> OF <u>3</u>
---	---



Law Environmental, Inc.
Government Services Division

BORING NUMBER	MW-15
JOB NUMBER	11-8531-01
DATE STARTED	3-18-89
DATE COMPLETED	3-19-89
DRILLED BY	CN
LOGGED BY	RM
CHECKED BY	RM

PAGE 3 OF 3

[illegible]