



# Well Installation Diagram

Well: MW-330

Client: DDMT

Project: MW-97 Replacement

Project Number: 10101451

Site Location: N. of Amido St.

Logged by: C. Mokri

Well Completion Date: 6/9/2021

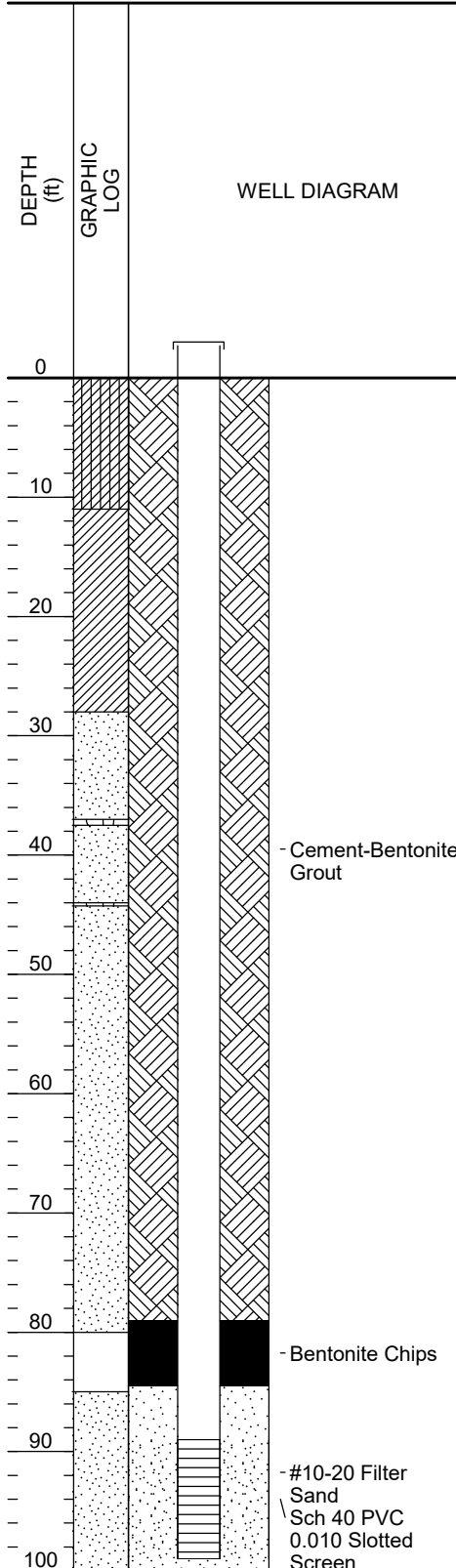
Northing: 276075.7

Easting: 802123.4

Ground Elevation (NAVD88): 297.5

Top of Screen Elevation (ft, NAVD): 208.5

Top of Casing Elevation (ft, NAVD): 300.59



Drilling Company: Walker Hill  
Drilling Method: Sonic  
Borehole Diameter (in): 6

Bollards: Yes  
Well Diameter (in): 2  
Well Material: SCH 40 PVC  
Slot Size (in): 0.010

Type of Filter Pack: Sand  
Filter Pack Gradation: #10-20  
Filter Pack Quantity: 300 lbs  
Bentonite Type: 1/4 in. Pellets  
Bentonite Quantity: 100 lbs.

Grout Type: Type II  
Grout Quantity: 150 gal.  
Well Development Method: Waterra Hydrolift II  
Well Development Date: 6/11/21  
Depth to Water (ft. btoc): 86.23

Surface Completion: Standpipe with Bollards

Pad Dimensions: 3 ft. x 3 ft.

Riser Length (ft): 92.1

Depth to Top of Bentonite (ft, bgs): 79

Depth to Top of Filter Pack (ft, bgs): 84.5

Length of Screen (ft): 10

Total Well Depth (ft, btoc): 102.3

Total Boring Depth (ft, btoc): 100

Created By: C. Mokri

Created Date: 6/21/21

Checked By: T. Holmes

Checked Date: 6/28/21