

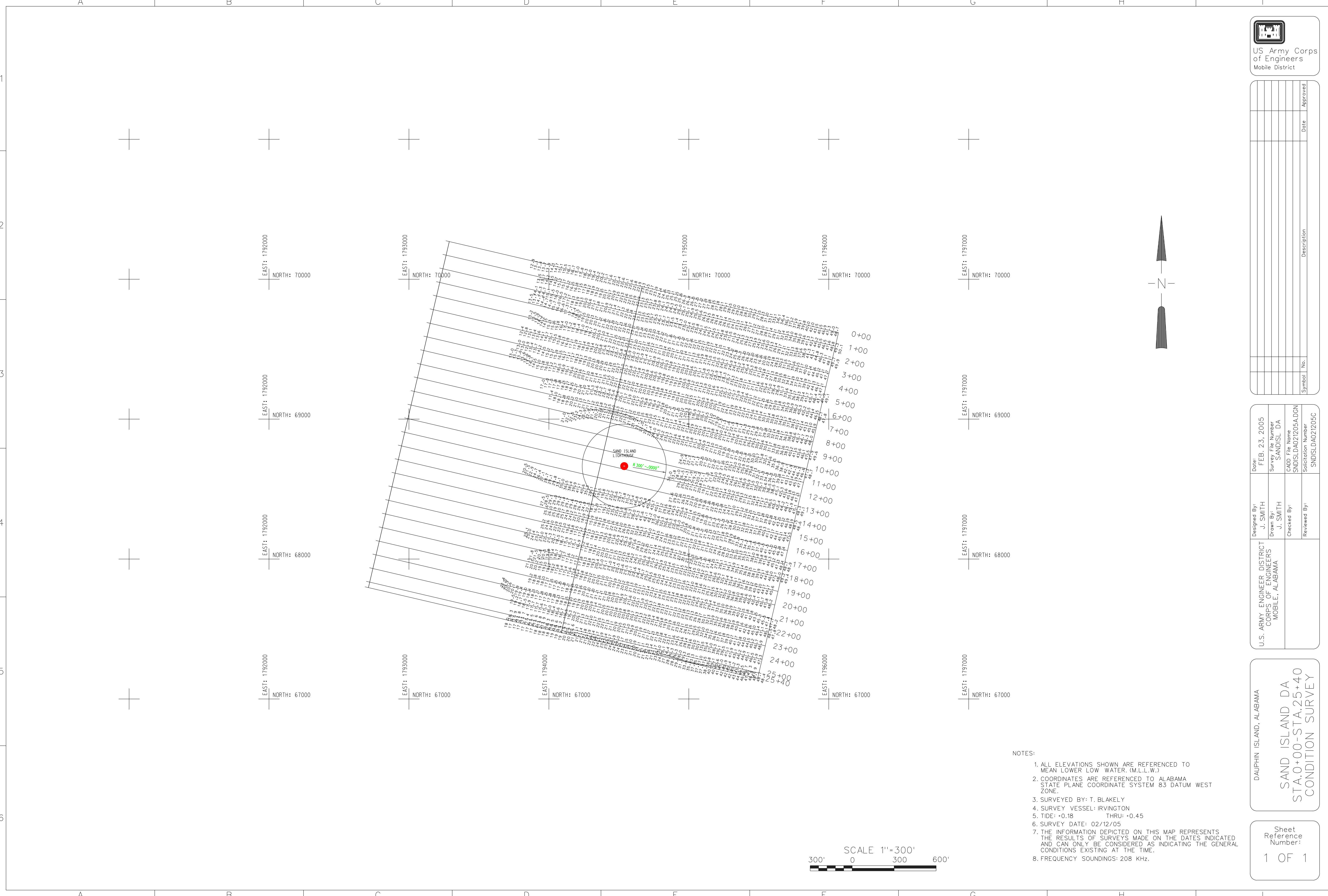
US Army Corps
of Engineers
Mobile District

Symbol	No.	Description	Date	Approved

Designed By:	J. SMITH	Date:	FEB. 23, 2005
Drawn By:	J. SMITH	Survey File Number:	SANDISL DA
Checked By:	J. SMITH	CADD File Name:	SNDISLDA021205A.DGN
Reviewed By:		Solicitation Number:	SNDISLDA021205C

DAUPHIN ISLAND, ALABAMA
SAND ISLAND DA
STA.0+00-STA.25+40
CONDITION SURVEY

Sheet
Reference
Number:
1 OF 1



- NOTES:
1. ALL ELEVATIONS SHOWN ARE REFERENCED TO MEAN LOWER LOW WATER. (M.L.L.W.)
 2. COORDINATES ARE REFERENCED TO ALABAMA STATE PLANE COORDINATE SYSTEM 83 DATUM WEST ZONE.
 3. SURVEYED BY: T. BLAKELY
 4. SURVEY VESSEL: IRVINGTON
 5. TIDE: +0.18 THRU: +0.45
 6. SURVEY DATE: 02/12/05
 7. THE INFORMATION DEPICTED ON THIS MAP REPRESENTS THE RESULTS OF SURVEYS MADE ON THE DATES INDICATED AND CAN ONLY BE CONSIDERED AS INDICATING THE GENERAL CONDITIONS EXISTING AT THE TIME.
 8. FREQUENCY SOUNDINGS: 208 KHz.

