



REPLY TO  
ATTENTION OF:

DEPARTMENT OF THE ARMY  
U.S. ARMY ENGINEER DISTRICT, MOBILE DISTRICT  
P.O. BOX 2288  
MOBILE, ALABAMA 36628-0001

October 7, 2011

Inland Branch  
Regulatory Division

**JOINT PUBLIC NOTICE SAM-2009-01149-DMY, MOD 01  
U.S. ARMY CORPS OF ENGINEERS**

**MISSISSIPPI DEPARTMENT OF ENVIRONMENTAL QUALITY  
OFFICE OF POLLUTION CONTROL**

**MISSISSIPPI DEPARTMENT OF MARINE RESOURCES**

**MODIFICATION FOR WETLAND FILL FOR CONSTRUCTION AND OPERATION OF A  
INTEGRATED GASIFICATION COMBINED-CYCLE PLANT  
KEMPER COUNTY, MISSISSIPPI**

TO WHOM IT MAY CONCERN:

This District has received an application for a Department of the Army (DA) permit pursuant to Section 404 of the Clean Water Act (33 USC 1344). Please communicate this information to interested parties.

**APPLICANT:** Mississippi Power Company  
Attention: Mr. John Templeton  
Post Office Box 4079  
Biloxi, Mississippi 39502-4079

**AGENT:** Eco-Systems, Inc.  
Attention: Dr. Melissa Pringle  
6360 I-55 North, Suite 330  
Jackson, Mississippi 39211

**WATERWAY:** The tributaries located in the western portion of the project site drain into Chickasawhay Creek, just north of Okatibbee Lake, which is in the Chunky/Okatibbee watershed and the wetlands located in the eastern portion of the project site drain into Blackwater Creek, which is in the Sucarnoochee watershed. Highway 493 separates the two drainage areas. The project area is located in Sections 3, 4, 9, 10, and 11; Range 15 East, Township 29 North, Kemper County, Mississippi. (Center Point Latitude 32.6486 North, Longitude -88.7611 West).

**WORK:** The U.S. Army Corps of Engineers, Mobile District (Corps) has received a request to modify an existing authorization for the Integrated Gasification Combined-Cycle (IGCC) lignite coal power producing facility co-located with a surface lignite mine. This overall project was evaluated under a Final Environmental Impact Statement dated May of 2010. The co-located lignite mine was evaluated under DA number SAM-2008-1759-DMY.

The modification filed by the permittee, the Mississippi Power Company (MPC) requests changes from the original authorization as a result of unforeseen circumstances due to engineering refinement of the linear facilities; avoidance of varying structures and cultural resources; and a better understanding of construction methodologies and requirements.

According to the MPC, during final engineering and design, it was necessary to make minor adjustments to the rights-of-way (ROW) and construction methodology for the CO2 pipeline portion of the project. As a result of these changes, temporary impacts will increase from the originally authorized 39.1 acres of wetlands to 71 acres. The MPC proposes to directionally drill underneath the Okatibbee Creek and adjacent wetlands immediately south of State Boulevard Extension in Lauderdale County; Burwell Creek immediately north of Interstate 20 in Lauderdale County; Chunky River and adjacent wetlands in Lauderdale County; and Souenlovie Creek and adjacent wetlands in Clarke County. As a result, the MPC would avoid temporary impact to these perennial streams, 2 intermittent streams, and approximately 2.4 acres of wetlands. Additional details can be found in the enclosed figures.

The U.S. Department of Energy (DOE) was identified as the lead federal agency for the overall project. The Corps cooperated in preparation of the document. All items related to “waters of the U.S.” including wetlands would fall under the jurisdiction of the Corps for the DOE. A copy of the Final EIS for the project can be found at the following website:

[http://www.fossil.energy.gov/programs/powersystems/cleancoal/ccpi/kemper\\_eis.html](http://www.fossil.energy.gov/programs/powersystems/cleancoal/ccpi/kemper_eis.html)

**PROJECT PURPOSE:** Information relating to the project purpose can be found in the Final EIS dated May of 2010. Additional details regarding the purpose and need related to the modification will be performed by the Corps and the DOE with cooperating federal and state agencies.

**EXISTING CONDITIONS:** Information regarding existing conditions can be found in the Final EIS dated May of 2010.

**ALTERNATIVES:** Alternatives considered for the original authorization can be found in the Final EIS dated May of 2010. Additional details regarding alternatives related to the proposed modification are due to unforeseen circumstances noted above. Further coordination regarding proposed alternatives will be performed by the Corps and the DOE with cooperating federal and state agencies.

**PROPOSED MITIGATION:** The applicant is proposing a modification to the original authorization for required mitigation. The original authorization for impacts associated with the CO2 pipeline were for the MPC to provide the sufficient number of credits purchased from an approved mitigation bank prior to the start of construction. As part of coordination to secure the number of credits needed, the MPC determined that existing approved banks were not within the Chunky-Okatibbee Watershed. Therefore, the MPC is proposing additional mitigation to be performed onsite and adjacent to the approved mitigation area for the original authorization for on-site impacts. Further coordination regarding proposed mitigation will be performed by the Corps and the DOE with cooperating federal and state agencies.

If required, the applicant will coordinate with the State of Mississippi, MDEQ in accordance with Section 401(a) (1) of the Clean Water Act, and upon completion of the required process, a determination relative to a modified certification will be made.

This public notice is being distributed to all known interested persons in order to assist in developing facts on which a decision by the Corps can be based for this modification request. For accuracy and completeness of the record, all data in support of or in opposition to the proposed work should be submitted in writing setting forth sufficient detail to furnish a clear understanding of the reasons for support or opposition. The decision whether to issue a permit will be based on an evaluation of the probable impact, including cumulative impacts, of the proposed activity on the public interest. That decision will reflect the national concern for both protection and utilization of important resources.

The benefit which reasonably may be expected to accrue from the proposal must be balanced against its reasonably foreseeable detriments. All factors which may be relevant to the proposal will be considered, including the cumulative effects thereof; among those are conservation, economics, aesthetics, general environmental concerns, wetlands, cultural values, fish and wildlife values, flood hazards, flood plain values, land use, navigation, shoreline erosion and accretion, recreation, water supply and conservation, water quality, energy needs, safety, food production and in general, the needs and welfare of the people.

The Corps is soliciting comments in order to consider and evaluate the impacts of this proposed activity. Any comments received will be considered by the Corps to determine whether to issue, modify, condition or deny a permit for this proposal. To make this decision, comments are used to assess impacts on endangered species, historic properties, water quality, general environmental effects, and the other public interest factors listed above.

Any person may request, in writing, within the comment period specified in this notice, that a public hearing be held for consideration of this application. Requests for public hearings shall state with particularity, the reasons for holding a public hearing.

Evaluation of the probable impacts involving deposits of dredged or fill material into waters of the United States will include the application of guidelines established by the Administrator of the U.S. Environmental Protection Agency.

The DOE as the lead federal agency is responsible for coordination in accordance with Section 106 of the National Historic Preservation Act and Section 7 of the Endangered Species Act.

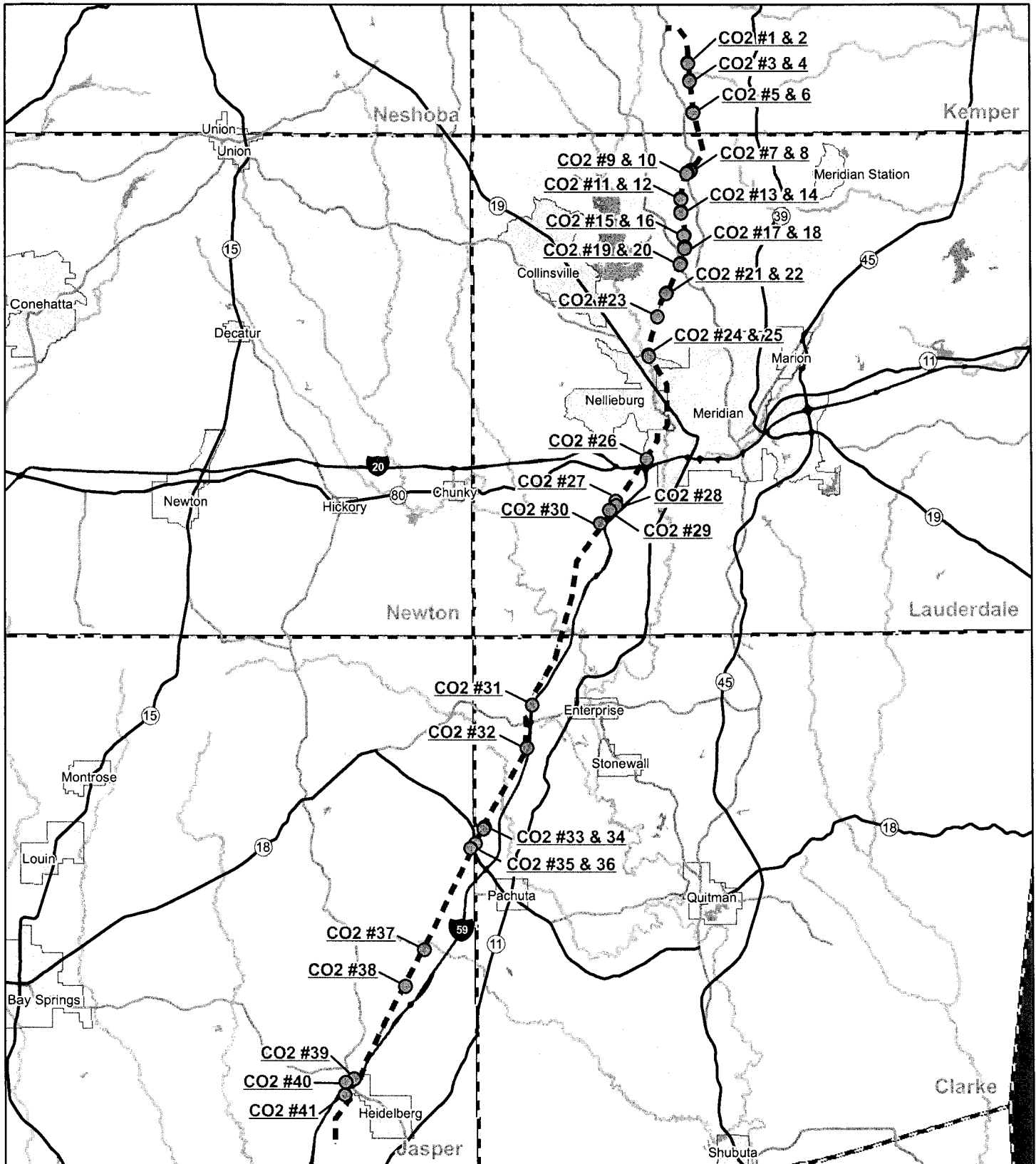
Correspondence concerning this Public Notice should refer to Public Notice Number **SAM-2009-01149-DMY MOD 01** and shall be directed to the District Engineer, U.S. Army Engineer District, Mobile, Post Office Box 2288, Mobile, Alabama 36628-0001, Attention: Mr. Damon M. Young, P.G., with a copy to the Mississippi Department of Environmental Quality, Office of Pollution Control, Attention: Mrs. Florance Watson, P.E., Post Office Box 2261, Jackson, Mississippi 39289, in time to be received within **15 days** of the date of this public notice.

If you have any questions concerning this publication, you may contact the project manager for this application, **Mr. Damon M. Young, P.G.** (damon.m.young@usace.army.mil), phone **(251) 690-2658**. Please refer to the above Public Notice number.

For additional information about our Regulatory Program, please visit our web site at: [www.sam.usace.army.mil/rd/reg](http://www.sam.usace.army.mil/rd/reg) and please take a moment to complete our customer satisfaction survey while you're there. Your responses are appreciated and will allow us to improve our services.

MOBILE DISTRICT  
U.S. Army Corps of Engineers

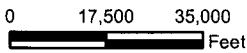
Enclosures



**Disclaimer:**  
 The information contained in this map was generated from GIS data maintained by different sources and agencies. Some limitations may apply based upon restrictions imposed by other sources or agencies providing data directly to Eco-Systems, Inc (Eco-Systems) or making data available to download via internet. Areas depicted by these products are approximate, and are not necessarily accurate to mapping, surveying, or engineering standards. These digital products are for illustration purposes only, are not suitable for site-specific decision making, are subject to constant changes, and may not be complete, accurate or current. Any specific coordinates may be in error by several hundred feet or more. A data layer may have registration errors and not overlay with other data layers correctly.

Eco-Systems makes no warranties, expressed or implied as to the accuracy, completeness, currency, reliability, or suitability for any particular purpose of any data or information contained in or generated from this map. Eco-Systems assumes no liability associated with this map. Conclusions drawn from this information are the responsibility of the user. Every effort has been made to ensure the accuracy, correctness and timeliness of the materials presented. Eco-Systems assumes no liability for damages incurred directly or indirectly as a result of incomplete, incorrect or omitted information. The user of this information assumes all liability for their dependence on this information and assumes responsibility for the information.

- LEGEND**
- State of Alabama
  - County Boundaries
  - City Limits
  - Water Bodies
  - Additional Survey Area Only
  - CO2 Pipeline Centerline
  - Interstates
  - U.S. Highways
  - State Highways
  - Perennial Streams



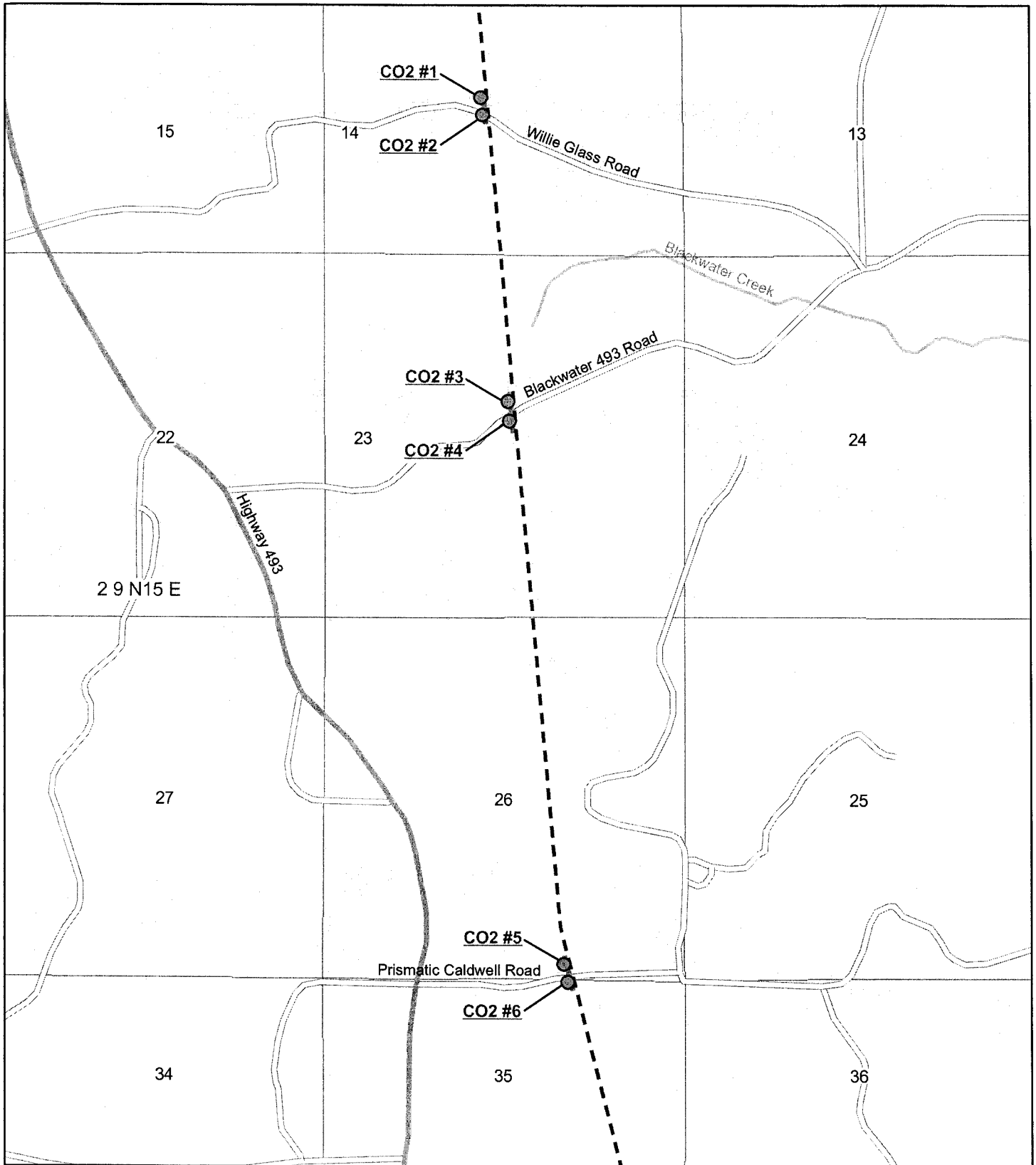
CO2 LINE MISSISSIPPI POWER IGCC  
 KEMPER COUNTY, MISSISSIPPI

# Kemper County

## I G I C I C

### plant

CO2 PIPELINE FIGURE 1

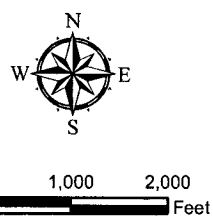


**Disclaimer:**  
 The information contained in this map was generated from GIS data maintained by different sources and agencies. Some limitations may apply based upon restrictions imposed by other sources or agencies providing data directly to Eco-Systems, Inc. (Eco-Systems) or making data available to download via internet. Areas depicted by these products are approximate, and are not necessarily accurate to mapping, surveying, or engineering standards. These digital products are for illustration purposes only; are not suitable for site specific decision making, are subject to constant changes, and may not be complete, accurate or current. Any specific coordinates may be in error by several hundred feet or more. A data layer may have registration errors and not overlay with other data layers correctly.

Eco-Systems makes no warranties, expressed or implied as to the accuracy, completeness, currency, reliability, or suitability for any particular purpose of any data or information contained in or generated from this map. Eco-Systems assumes no liability associated with this map. Conclusions drawn from this information are the responsibility of the user. Every effort has been made to ensure the accuracy, correctness and timeliness of the materials presented. Eco-Systems assumes no liability for damages incurred directly or indirectly as a result of incomplete, incorrect or omitted information. The user of this information assumes all liability for their dependence on this information and assumes responsibility for the information.

**LEGEND**

- Section Boundaries
- City Limits
- Water Bodies
- Additional Survey Area Only
- CO2 Pipeline Centerline
- Interstates
- U.S. Highways
- State Highways
- County Roads
- Perennial Streams

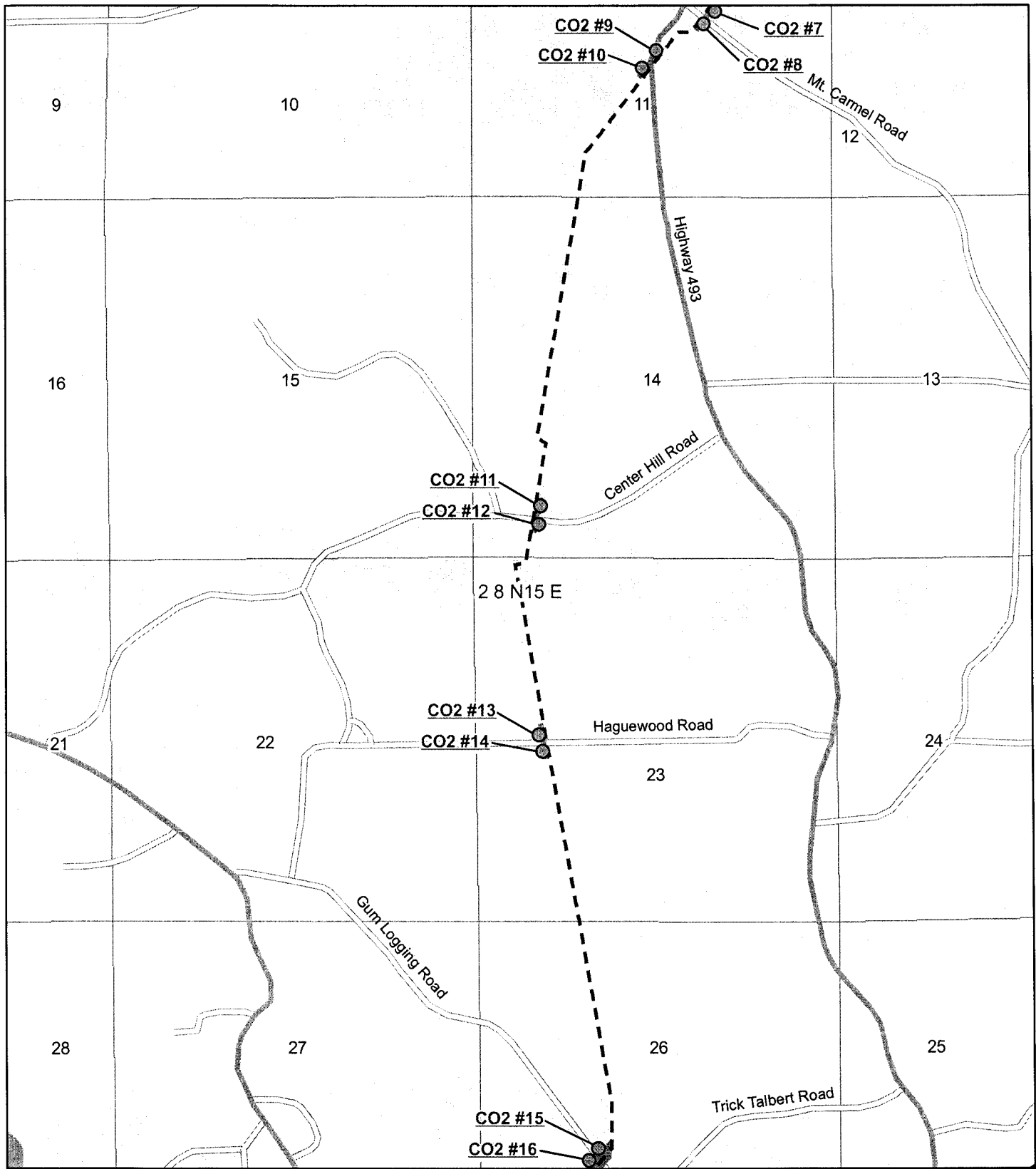


**CO2 LINE MISSISSIPPI POWER IGCC  
 KEMPER COUNTY, MISSISSIPPI**

**Kemper County  
 I | G | C | C  
 plant**

**CO2 PIPELINE**

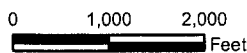
**FIGURE  
 2**



**Disclaimer:**  
 The information contained in this map was generated from GIS data maintained by different sources and agencies. Some limitations may apply based upon restrictions imposed by other sources or agencies providing data directly to Eco-Systems, Inc. (Eco-Systems) or making data available to download via internet. Areas depicted by these products are approximate, and are not necessarily accurate to mapping, surveying, or engineering standards. These digital products are for illustration purposes only, are not suitable for site-specific decision making, are subject to constant changes, and may not be complete, accurate or current. Any specific coordinates may be in error by several hundred feet or more. A data layer may have registration errors and not overlay with other data layers correctly.

Eco-Systems makes no warranties, expressed or implied as to the accuracy, completeness, currency, reliability, or suitability for any particular purpose of any data or information contained in or generated from the map. Eco-Systems assumes no liability associated with this map. Conclusions drawn from this information are the responsibility of the user. Every effort has been made to ensure the accuracy, correctness and timeliness of the materials presented. Eco-Systems assumes no liability for damages incurred directly or indirectly as a result of incomplete, incorrect or omitted information. The user of this information assumes all liability for their dependence on this information and assumes responsibility for the information.

- LEGEND**
- Section Boundaries
  - City Limits
  - Water Bodies
  - Additional Survey Area Only
  - CO2 Pipeline Centerline
  - Interstates
  - U.S. Highways
  - State Highways
  - County Roads
  - Perennial Streams

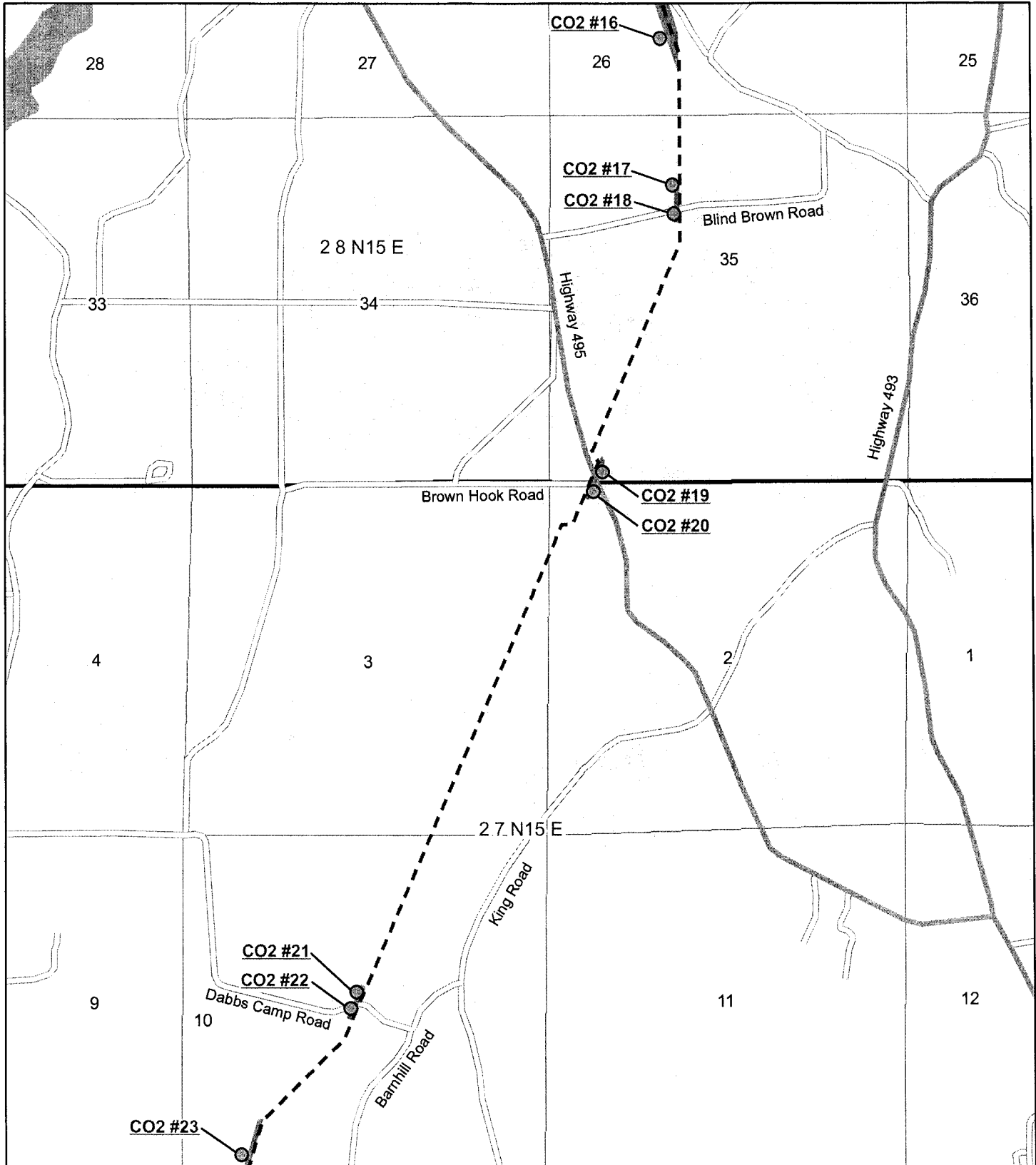


CO2 LINE MISSISSIPPI POWER IGCC  
 KEMPER COUNTY, MISSISSIPPI

**Kemper County**  
 I | G | C | I | C  
*plant*

CO2 PIPELINE

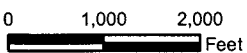
FIGURE  
 3



**Disclaimer:**  
 The information contained in this map was generated from GIS data maintained by different sources and agencies. Some limitations may apply based upon restrictions imposed by other sources or agencies providing data directly to Eco-Systems, Inc. (Eco-Systems) or making data available to download via internet. Areas depicted by these products are approximate, and are not necessarily accurate to mapping, surveying, or engineering standards. These digital products are for illustration purposes only, are not suitable for site-specific decision making, are subject to constant changes, and may not be complete, accurate or current. Any specific coordinates may be in error by several hundred feet or more. A data layer may have registration errors and not overlay with other data layers correctly.

Eco-Systems makes no warranty, expressed or implied as to the accuracy, completeness, currency, reliability, or suitability for any particular purpose of any data or information contained in or generated from the map. Eco-Systems assumes no liability associated with this map. Conclusions drawn from this information are the responsibility of the user. Every effort has been made to ensure the accuracy, correctness and timeliness of the materials presented. Eco-Systems assumes no liability for damages incurred directly or indirectly as a result of incomplete, incorrect or omitted information. The user of this information assumes all liability for their dependence on this information and assumes responsibility for the information.

- LEGEND**
- Section Boundaries
  - City Limits
  - Water Bodies
  - Additional Survey Area Only
  - CO2 Pipeline Centerline
  - Interstates
  - U.S. Highways
  - State Highways
  - County Roads
  - Perennial Streams

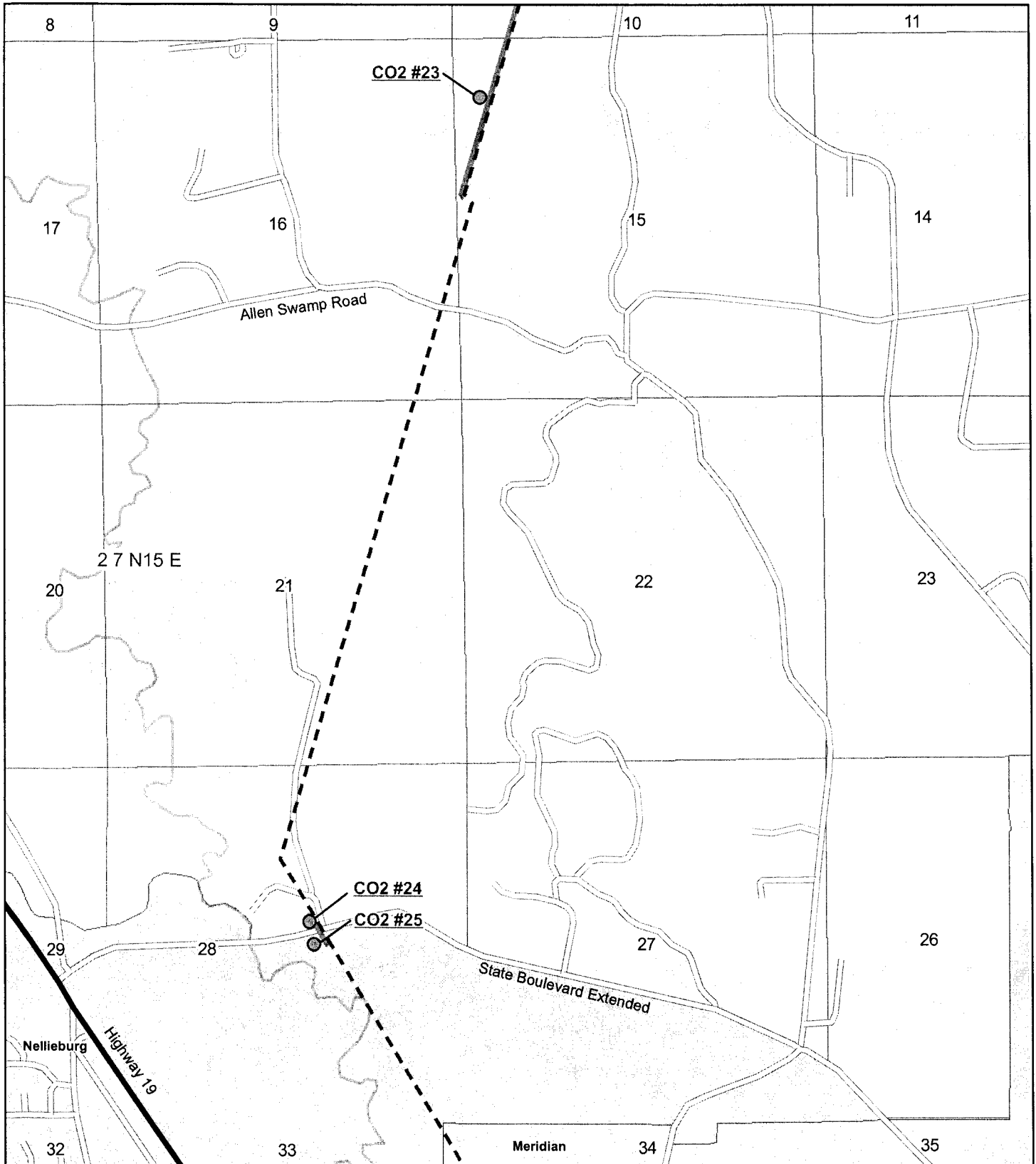


CO2 LINE MISSISSIPPI POWER IGCC  
 KEMPER COUNTY, MISSISSIPPI

**Kemper County**  
 I | G | C | C  
*plant*

CO2 PIPELINE

FIGURE  
 4



**Disclaimer:**  
 The information contained in this map was generated from GIS data maintained by different sources and agencies. Some limitations may apply based upon restrictions imposed by other sources or agencies providing data directly to Eco-Systems, Inc. (Eco-Systems) or making data available to download via internet. Areas depicted by these products are approximate and are not necessarily accurate to mapping, surveying, or engineering standards. These digital products are for illustration purposes only, are not suitable for site-specific decision making, are subject to constant changes, and may not be complete, accurate or current. Any specific coordinates may be in error by several hundred feet or more. A data layer may have registration errors and not overlay with other data layers correctly.

Eco-Systems makes no warranties, expressed or implied as to the accuracy, completeness, currency, reliability, or suitability for any particular purpose of any data or information contained in or generated from this map. Eco-Systems assumes no liability associated with this map. Conclusions drawn from this information are the responsibility of the user. Every effort has been made to ensure the accuracy, correctness and timeliness of the materials presented. Eco-Systems assumes no liability for damages incurred directly or indirectly as a result of incomplete, incorrect or omitted information. The user of this information assumes all liability for their dependence on this information and assumes responsibility for the information.

**LEGEND**

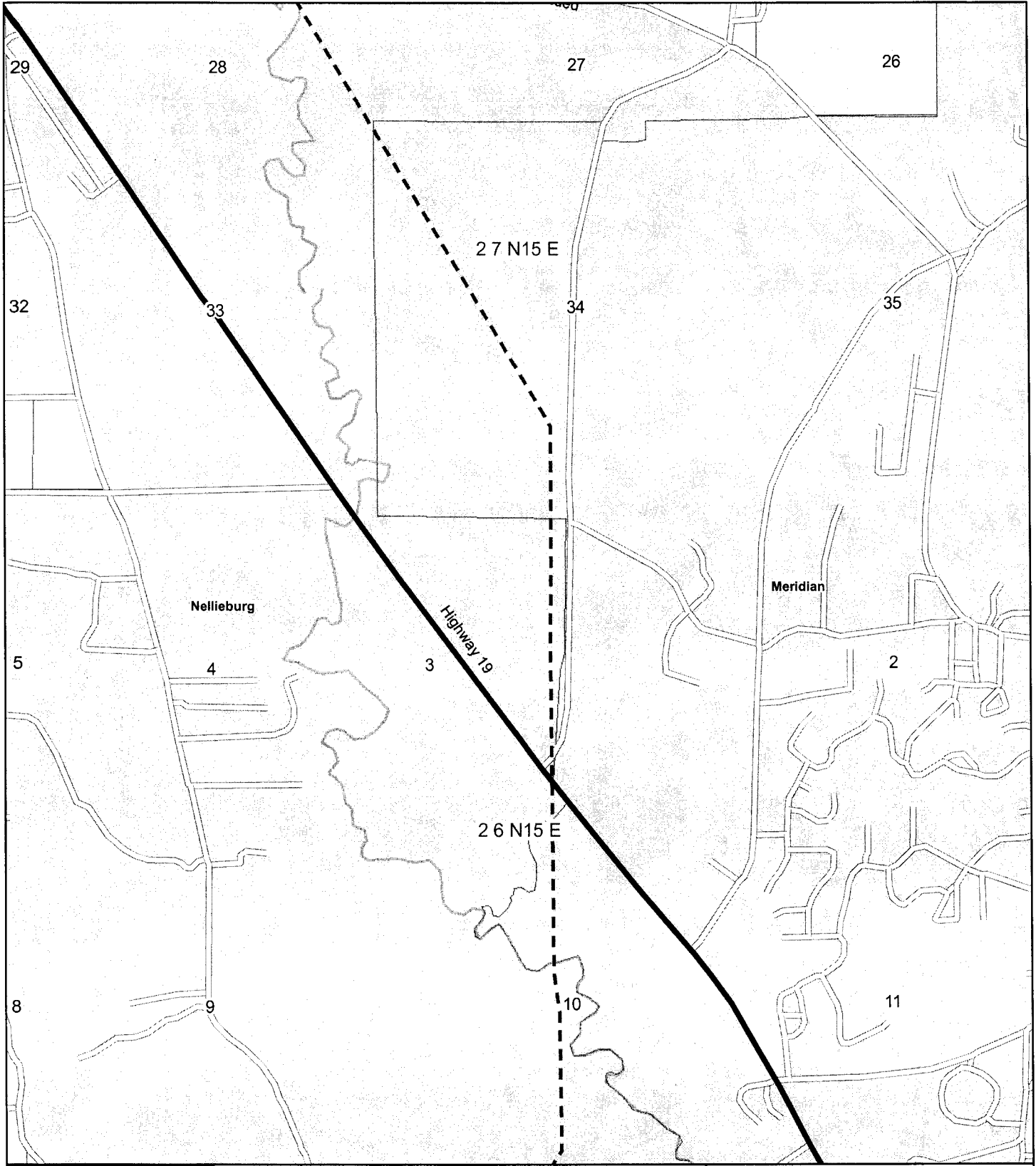
- Section Boundaries
- City Limits
- Water Bodies
- Additional Survey Area Only
- CO2 Pipeline Centerline
- Interstates
- U.S. Highways
- State Highways
- County Roads
- Perennial Streams

**CO2 LINE MISSISSIPPI POWER IGCC  
 KEMPER COUNTY, MISSISSIPPI**

**Kemper County**  
 I | G | C | C  
*plant*

**CO2 PIPELINE**

**FIGURE  
 5**



**Disclaimer:**  
 The information contained in the map was generated from GIS data maintained by different sources and agencies. Some limitations may apply based upon restrictions imposed by other sources or agencies providing data directly to Eco-Systems, Inc. (Eco-Systems) or making data available to download via internet. Areas depicted by these products are approximate, and are not necessarily accurate to mapping, surveying, or engineering standards. These digital products are for illustration purposes only, are not suitable for site-specific decision making, are subject to constant changes, and may not be complete, accurate or current. Any specific coordinates may be in error by several hundred feet or more. A data layer may have registration errors and not overlay with other data layers correctly.

Eco-Systems makes no warranties, expressed or implied as to the accuracy, completeness, currency, reliability, or suitability for any particular purpose of any data or information contained in or generated from the map. Eco-Systems assumes no liability associated with this map. Conclusions drawn from this information are the responsibility of the user. Every effort has been made to ensure the accuracy, correctness and timeliness of the materials presented. Eco-Systems assumes no liability for damages incurred directly or indirectly as a result of incomplete, incorrect or omitted information. The user of this information assumes all liability for their dependence on this information and assumes responsibility for the information.

**LEGEND**

- Section Boundaries
- City Limits
- Water Bodies
- Additional Survey Area Only
- CO2 Pipeline Centerline
- Interstates
- U.S. Highways
- State Highways
- County Roads
- Perennial Streams

N  
 W    E  
 S

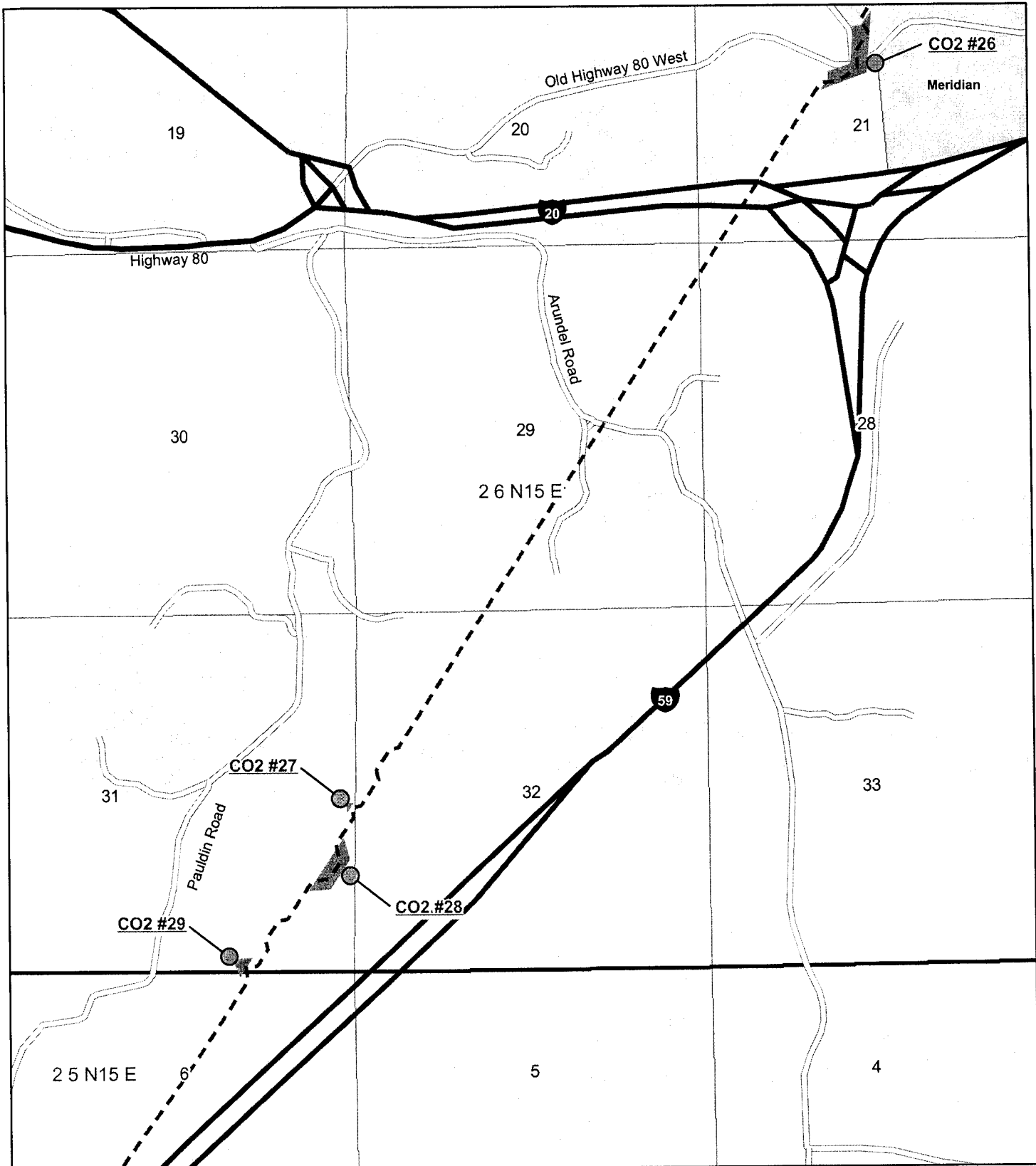
0    1,000    2,000  
 Feet

**CO2 LINE MISSISSIPPI POWER IGCC  
 KEMPER COUNTY, MISSISSIPPI**

**Kemper County**  
 I | G | C | C  
*plant*

**CO2 PIPELINE**

**FIGURE  
 6**



**Disclaimer:**  
 The information contained in this map was generated from GIS data maintained by different sources and agencies. Some limitations may apply based upon restrictions imposed by other sources or agencies providing data directly to Eco-Systems, Inc. (Eco-Systems) or making data available to download via internet. Areas depicted by these products are approximate, and are not necessarily accurate to mapping, surveying, or engineering standards. These digital products are for illustration purposes only, are not suitable for site-specific decision making, are subject to constant changes, and may not be complete, accurate or current. Any specific coordinates may be in error by several hundred feet or more. A data layer may have registration errors and not overlay with other data layers correctly.

Eco-Systems makes no warranties, expressed or implied as to the accuracy, completeness, currency, reliability, or suitability for any particular purpose of any data or information contained in or generated from this map. Eco-Systems assumes no liability associated with the map. Conclusions drawn from this information are the responsibility of the user. Every effort has been made to ensure the accuracy, correctness and timeliness of the materials presented. Eco-Systems assumes no liability for damages incurred directly or indirectly as a result of incomplete, incorrect or omitted information. The user of this information assumes all liability for their dependence on this information and assumes responsibility for the information.

**LEGEND**

- Section Boundaries
- City Limits
- Water Bodies
- Additional Survey Area Only
- CO2 Pipeline Centerline
- Interstates
- U.S. Highways
- State Highways
- County Roads
- Perennial Streams

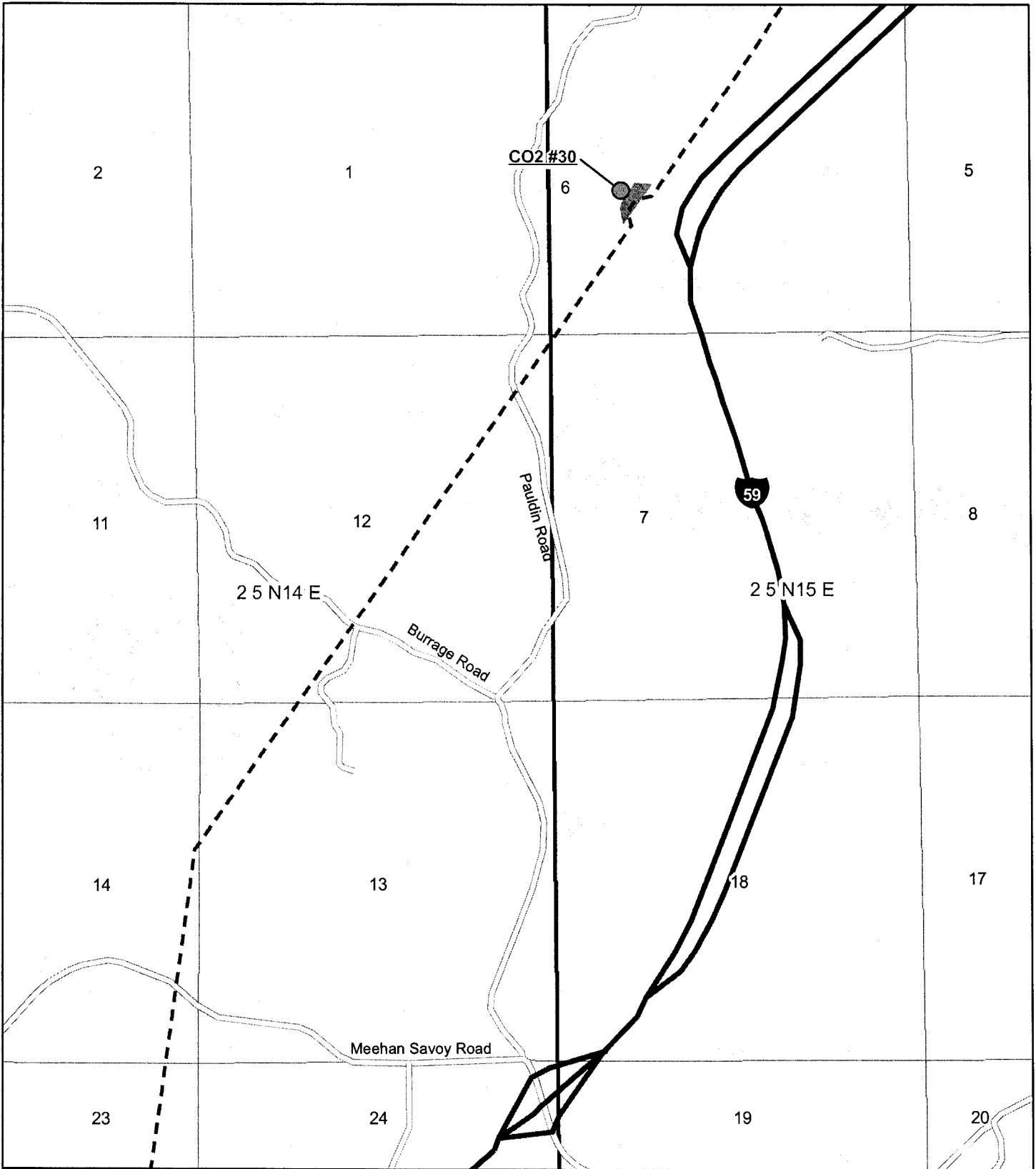
0 1,000 2,000 Feet

CO2 LINE MISSISSIPPI POWER IGCC  
 KEMPER COUNTY, MISSISSIPPI

**Kemper County**  
 I | G | C | I | C  
*plant*

CO2 PIPELINE

FIGURE 7



**Disclaimer:**  
 The information contained in this map was generated from GIS data maintained by different sources and agencies. Some limitations may apply based upon restrictions imposed by other sources or agencies providing data directly to Eco-Systems, Inc. (Eco-Systems) or making data available to download via internet. Areas depicted by these products are approximate, and are not necessarily accurate to mapping, surveying, or engineering standards. These digital products are for illustration purposes only, and are not suitable for site specific decision making, are subject to constant changes, and may not be complete, accurate or current. Any specific coordinates may be in error by several hundred feet or more. A data layer may have registration errors and not overlay with other data layers correctly.

Eco-Systems makes no warranties, expressed or implied as to the accuracy, completeness, currency, reliability, or suitability for any particular purpose of any data or information contained in or generated from this map. Eco-Systems assumes no liability associated with this map. Conclusions drawn from this information are the responsibility of the user. Every effort has been made to ensure the accuracy, correctness and timeliness of the materials presented. Eco-Systems assumes no liability for damages incurred directly or indirectly as a result of incomplete, incorrect or omitted information. The user of this information assumes all liability for their dependence on this information and assumes responsibility for the information.

**LEGEND**

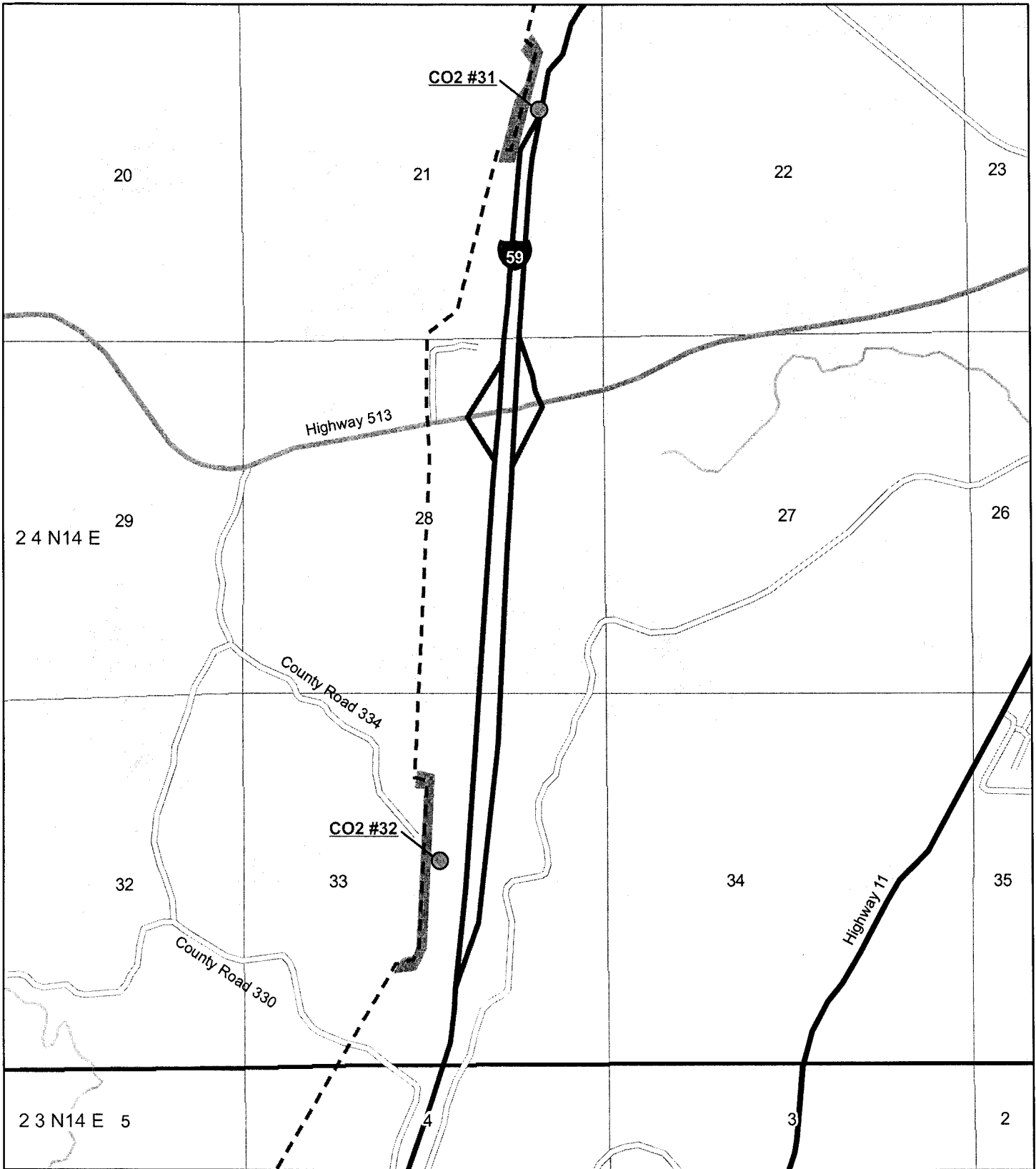
- Section Boundaries
- City Limits
- Water Bodies
- Additional Survey Area Only
- CO2 Pipeline Centerline
- Interstates
- U.S. Highways
- State Highways
- County Roads
- Perennial Streams

0    1,000    2,000  
 Feet

CO2 LINE MISSISSIPPI POWER IGCC  
 KEMPER COUNTY, MISSISSIPPI

**Kemper County**  
 I | G | C | C  
*plant*

CO2 PIPELINE FIGURE 8



**Disclaimer:**  
 The information contained in this map was generated from GIS data maintained by different sources and agencies. Some limitations may apply based upon restrictions imposed by other sources or agencies providing data directly to Eco-Systems, Inc. (Eco-Systems) or making data available to download via internet. Areas depicted by these products are approximate, and are not necessarily accurate to mapping, surveying, or engineering standards. These digital products are for illustration purposes only, are not suitable for site-specific decision making, are subject to constant changes, and may not be complete, accurate or current. Any specific coordinates may be in error by several hundred feet or more. A data layer may have registration errors and not overlay with other data layers correctly.

Eco-Systems makes no warranties, expressed or implied as to the accuracy, completeness, currency, reliability, or suitability for any particular purpose of any data or information contained in or generated from this map. Conclusions drawn from this information are the responsibility of the user. Every effort has been made to ensure the accuracy, correctness and timeliness of the materials presented. Eco-Systems assumes no liability for damages incurred directly or indirectly as a result of incomplete, incorrect or omitted information. The user of this information assumes all liability for their dependence on this information and assumes responsibility for the information.

**LEGEND**

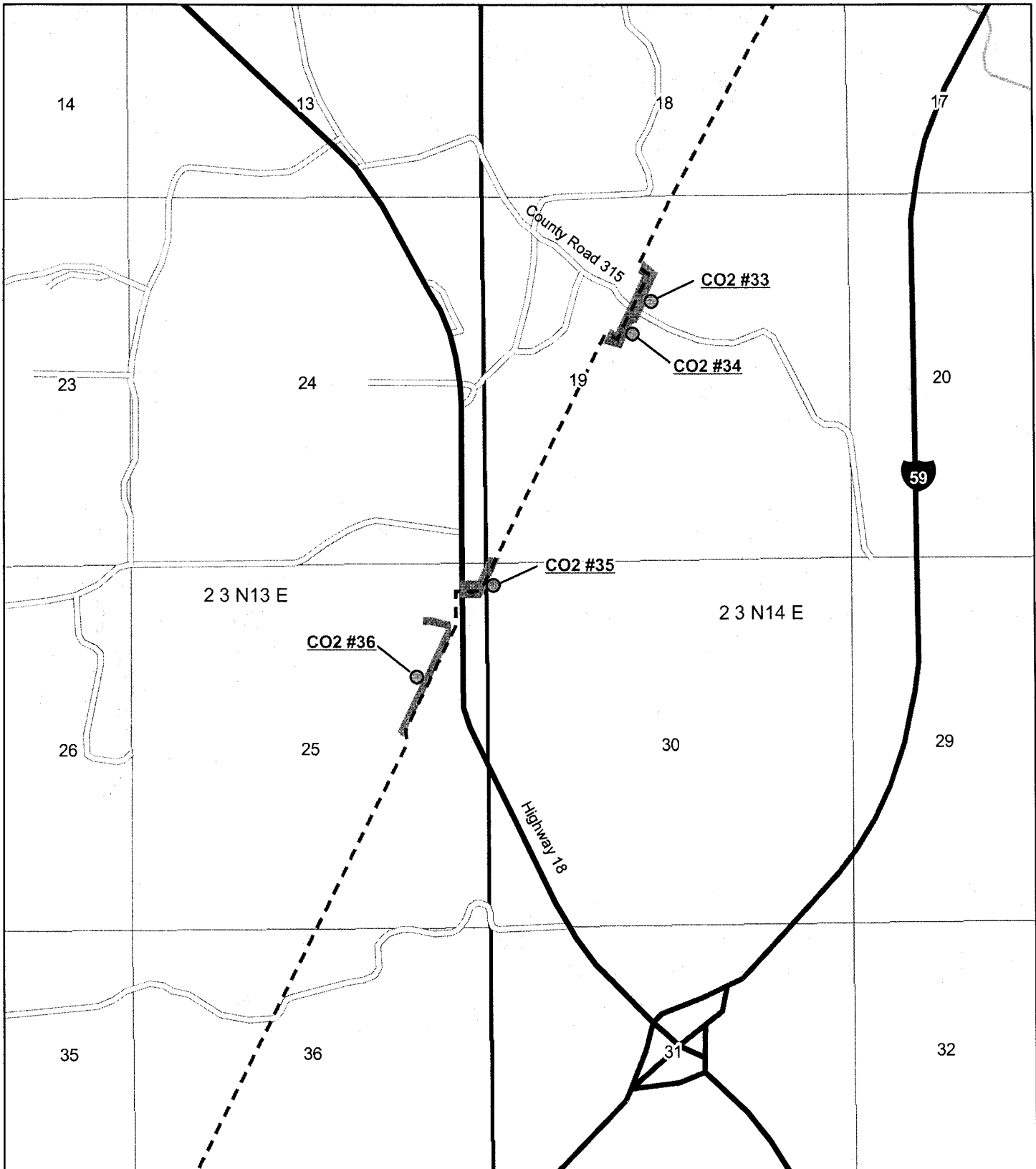
- Section Boundaries
- City Limits
- Water Bodies
- Additional Survey Area Only
- CO2 Pipeline Centerline
- Interstates
- U.S. Highways
- State Highways
- County Roads
- Perennial Streams

**CO2 LINE MISSISSIPPI POWER IGCC  
 KEMPER COUNTY, MISSISSIPPI**

**Kemper County**  
 I | G | C | C  
*plant*

**CO2 PIPELINE**

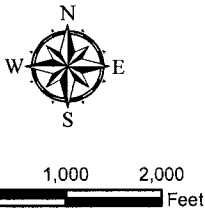
**FIGURE  
 9**



**Disclaimer:**  
 The information contained in this map was generated from GIS data maintained by different sources and agencies. Some limitations may apply based upon restrictions imposed by other sources or agencies providing data directly to Eco-Systems, Inc. (Eco-Systems) or making data available to download via internet. Areas depicted by these products are approximate, and are not necessarily accurate to mapping, surveying or engineering standards. These digital products are for illustration purposes only, are not suitable for site-specific decision making, are subject to constant changes and may not be complete, accurate or current. Any specific coordinates may be in error by several hundred feet or more. A data layer may have registration errors and not overlay with other data layers correctly.

Eco-Systems makes no warranties, expressed or implied as to the accuracy, completeness, currency, reliability, or suitability for any particular purpose of any data or information contained in or generated from this map. Eco-Systems assumes no liability associated with this map. Conclusions drawn from this information are the responsibility of the user. Every effort has been made to ensure the accuracy, correctness and timeliness of the materials presented. Eco-Systems assumes no liability for damages incurred directly or indirectly as a result of incomplete, incorrect or omitted information. The user of this information assumes all liability for their dependence on this information and assumes responsibility for the information.

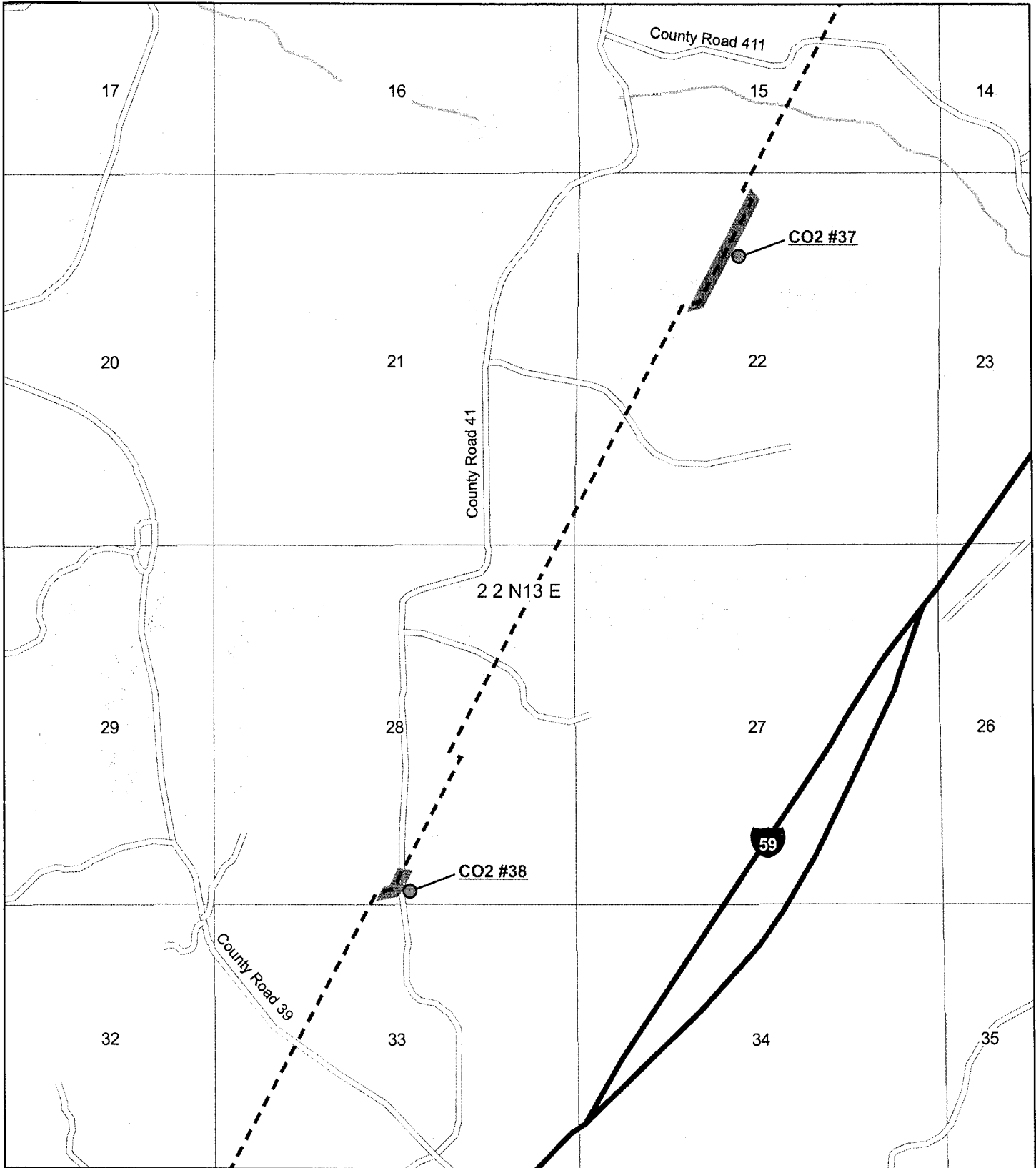
- LEGEND**
- Section Boundaries
  - City Limits
  - Water Bodies
  - Additional Survey Area Only
  - CO2 Pipeline Centerline
  - Interstates
  - U.S. Highways
  - State Highways
  - County Roads
  - Perennial Streams



CO2 LINE MISSISSIPPI POWER IGCC  
 KEMPER COUNTY, MISSISSIPPI

**Kemper County**  
 I I G I C I C  
*plant*

CO2 PIPELINE FIGURE 10



**Disclaimer:**  
 The information contained in this map was generated from GIS data maintained by different sources and agencies. Some limitations may apply based upon restrictions imposed by other sources or agencies providing data directly to Eco-Systems, Inc. (Eco-Systems) or making data available to download via internet. Areas depicted by these products are approximate, and are not necessarily accurate to mapping, surveying, or engineering standards. These digital products are for illustration purposes only, are not suitable for site-specific decision making, are subject to constant changes, and may not be complete, accurate or current. Any specific coordinates may be in error by several hundred feet or more. A data layer may have registration errors and not overlay with other data layers correctly.

Eco-Systems makes no warranties, expressed or implied as to the accuracy, completeness, currency, reliability, or suitability for any particular purpose of any data or information collected in or generated from this map. Eco-Systems assumes no liability associated with this map. Conclusions drawn from this information are the responsibility of the user. Every effort has been made to ensure the accuracy, correctness and timeliness of the materials presented. Eco-Systems assumes no liability for damages incurred directly or indirectly as a result of incomplete, incorrect or omitted information. The user of this information assumes all liability for their dependence on this information and assumes responsibility for the information.

**LEGEND**

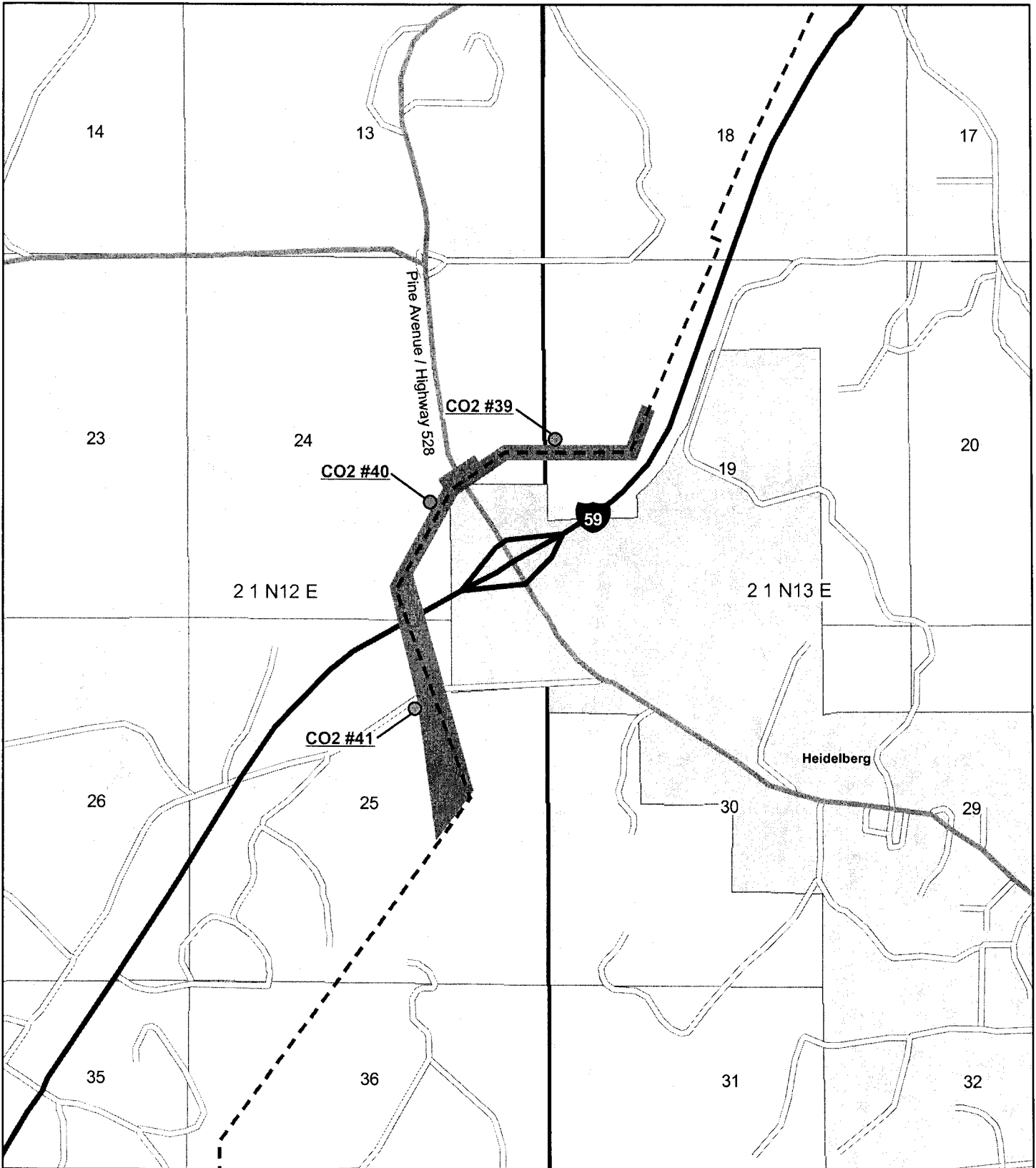
- Section Boundaries
- City Limits
- Water Bodies
- Additional Survey Area Only
- CO2 Pipeline Centerline
- Interstates
- U.S. Highways
- State Highways
- County Roads
- Perennial Streams

0      1,000      2,000  
 Feet

**CO2 LINE MISSISSIPPI POWER IGCC  
 KEMPER COUNTY, MISSISSIPPI**

**Kemper County**  
 I | G | C | C  
*plant*

**CO2 PIPELINE** FIGURE 11



**Disclaimer:**  
 The information contained in this map was generated from GIS data maintained by different sources and agencies. Some limitations may apply based upon restrictions imposed by other sources or agencies providing data directly to Eco-Systems, Inc. (Eco-Systems) or making data available to download via internet. Areas depicted by these products are approximate, and are not necessarily accurate in mapping, surveying, or engineering standards. These digital products are for illustration purposes only, are not suitable for site-specific decision making, are subject to constant changes, and may not be complete, accurate or current. Any specific coordinates may be in error by several hundred feet or more. A data layer may have registration errors and not overlay with other data layers correctly.

Eco-Systems makes no warranties, expressed or implied as to the accuracy, completeness, currency, reliability, or suitability for any particular purpose of any data or information contained in or generated from this map. Conclusions drawn from this information are the responsibility of the user. Every effort has been made to ensure the accuracy, correctness and timeliness of the materials presented. Eco-Systems assumes no liability for damages incurred directly or indirectly as a result of incomplete, incorrect or omitted information. The user of this information assumes all liability for their dependence on this information and assumes responsibility for the information.

**LEGEND**

- Section Boundaries
- City Limits
- Water Bodies
- Additional Survey Area Only
- CO2 Pipeline Centerline
- Interstates
- U.S. Highways
- State Highways
- County Roads
- Perennial Streams

**CO2 LINE MISSISSIPPI POWER IGCC  
 KEMPER COUNTY, MISSISSIPPI**

**Kemper County**  
 I I G I C I C  
*plant*

**CO2 PIPELINE**





**FIGURE  
 12**

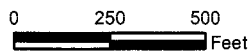


**Disclaimer:**  
 The information contained in this map was generated from GIS data maintained by different sources and agencies. Some limitations may apply based upon restrictions imposed by other sources or agencies providing data directly to Eco-Systems, Inc. (Eco-Systems) or making data available to download via internet. Areas depicted by these products are approximate, and are not necessarily accurate to mapping, surveying, or engineering standards. These digital products are for illustration purposes only, are not suitable for site-specific decision making, are subject to constant changes, and may not be complete, accurate or current. Any specific coordinates may be in error by several hundred feet or more. A data layer may have registration errors and not overlay with other data layers correctly.

Eco-Systems makes no warranties, expressed or implied as to the accuracy, completeness, currency, reliability, or suitability for any particular purpose of any data or information contained in or generated from this map. Eco-Systems assumes no liability associated with this map. Conclusions drawn from this information are the responsibility of the user. Every effort has been made to ensure the accuracy, correctness and timeliness of the materials presented. Eco-Systems assumes no liability for damages incurred directly or indirectly as a result of incomplete, incorrect or omitted information. The user of this information assumes all liability for their dependence on this information and assumes responsibility for the information.

**LEGEND**

-  Proposed Power Plant Site
-  Approximate Hudson Property - 122 Ac. +/-
-  Approximate Preservation Area - 16.6 Ac. +/-
-  Approximate Enhancement Area - 4.67 Ac. +/-



CO2 LINE MISSISSIPPI POWER IGCC  
 KEMPER COUNTY, MISSISSIPPI

**Kemper County**  
 I | G | C | I | C  
*plant*

MITIGATION PLAN

FIGURE  
 13