



REPLY TO
ATTENTION OF

DEPARTMENT OF THE ARMY
U.S. ARMY ENGINEER DISTRICT, MOBILE
CORPS OF ENGINEERS
P.O. BOX 2288
MOBILE, ALABAMA 36628-0001

CESAM RD-I- N
PUBLIC NOTICE NO.
SAM-2007-00162-HWL

December 1, 2009

JOINT PUBLIC NOTICE
U.S. ARMY CORPS OF ENGINEERS AND
STATE OF ALABAMA
DEPARTMENT OF ENVIRONMENTAL MANAGEMENT

PROPOSED FLOOD CONTROL PROJECT

TO WHOM IT MAY CONCERN: This District has received an application for a Department of the Army permit pursuant to Section 404 of the Clean Water Act (33 USC 1344). Please communicate this information to interested parties.

APPLICANT: City of Northport
3500 McFarland Boulevard
Northport, Alabama 35476

AGENT: Burk-Kleinpeter, Inc.
Attention: William Purser, P.E.
600 Lurleen Wallace Boulevard
Tuscaloosa, Alabama 35401

LOCATION: Tater Hill Creek at the Buckhead Subdivision, Northport, Tuscaloosa County, Alabama (N 33.24027 W 87.61743).

WORK: The applicant proposes to excavate, reshape, and convert 1,204 linear feet of an existing stream to a concrete trapezoidal channel, and replace two existing undersized culverts.

PROJECT PURPOSE: The applicants have stated that the purpose of the proposed project is to "benefit the residences of the Buckhead Subdivision by removing homes from the 100 year flood zone established by FEMA. The project was designed using future flows, based on a fully developed drainage basin."

AVOIDANCE AND MINIMIZATION: The applicant has submitted the following statement: "In order to avoid or minimize any impacts to the waters of the United States during the construction of the Buckhead Drainage Improvements, the contractor is to implement best management practices throughout construction. At a minimum this will include the use of silt fence, ditch checks, sump excavations, erosion control netting as well as placement of seed and sod in disturbed areas within the construction limits. The contractor will also be required to

remove any excess material offsite and dispose of properly. Also the City will be obtaining compensatory mitigation within an approved mitigation bank.”

MITIGATION: The applicant has proposed to purchase 2,818 stream credits from the Big Sandy Mitigation Bank.

WATER QUALITY: The applicant has applied for state certification in accordance with Section 401(a)(1) of the Clean Water Act, and has certified that the proposed activity complies with and will be conducted in a manner that is consistent with the State Coastal Zone Management Program. Upon completion of the required advertising and public comment review, a determination relative to consistency will be made by the Alabama Department of Environmental Management.

COMMENTS: This public notice is being distributed to all known interested persons in order to assist in developing facts on which a decision by the U.S. Army Corps of Engineers can be based. For accuracy and completeness of the record, all data in support of or in opposition to the proposed work should be submitted in writing setting forth sufficient detail to furnish a clear understanding of the reasons for support or opposition. The decision whether to issue a permit will be based on an evaluation of the probable impact, including cumulative impacts, of the proposed activity on the public interest. That decision will reflect the national concern for both protection and use of important resources. The benefit which reasonably may be expected to accrue from the proposal must be balanced against its reasonably foreseeable detriments. All factors which may be relevant to the proposal will be considered, including the cumulative effects thereof; among those are conservation, economics, aesthetics, general environmental concerns, wetlands, cultural values, fish and wildlife values, flood hazards, flood plain values, land use, navigation, shoreline erosion and accretion, recreation, water supply and conservation, water quality, energy needs, safety, food production, and in general, the needs and welfare of the people.

The Corps is soliciting comments from the public; Federal, State, and local agencies and officials; Indian Tribes; and other interested parties in order to consider and evaluate the impacts of this proposed activity. Any comments received will be considered by the Corps to determine whether to issue, modify, condition or deny a permit for this proposal. To make this decision, comments are used to assess impacts on endangered species, historic properties, water quality, general environmental effects, and the other public interest factors listed above. Comments are used in the preparation of an Environmental Assessment and/or an Environmental Impact Statement pursuant to the National Environmental Policy Act. Comments are also used to determine the need for a public hearing and to determine the overall public interest of the proposed activity.

Any person may request, in writing, within the comment period specified in this notice, that a public hearing be held to consider this application. Requests for public hearings shall state with particularity, the reasons for holding a public hearing.

Evaluation of the probable impacts involving deposits of dredged or fill material into waters of the United States will include the application of guidelines established by the Administrator of the U.S. Environmental Protection Agency.

The National Register of Historic Places has been consulted and no properties listed in or eligible for the National Register are known to exist which would be affected by the proposed work. This review constitutes the full extent of cultural resources investigations unless comment to this notice is received documenting that significant sites or properties exist which may be affected by this work, or that adequately documents that a potential exists for the location of significant sites or properties within the permit area. Copies of this notice are being sent to the U.S. Department of the Interior, National Park Service, Division of Archeological Services.

Preliminary review of this application and the U.S. Department of the Interior List of Endangered and Threatened Wildlife and Plants indicates that the proposed activity will not affect listed endangered or threatened species, or their critical habitat. The National Marine Fisheries Service requires the evaluation of impacts to Essential Fish Habitat of estuarine species.

Correspondence concerning this Public Notice should refer to Public Notice Number SAM-2007-00981-HWL and should be directed to:

District Engineer
ATTN: Casey Ehorn
U.S. Army Engineer District, Mobile
Birmingham Field Office
218 Summit Parkway
Homewood, Alabama 35209

with a copy to the:

Alabama Department of Environmental Management
4171 Commanders Drive
Mobile, Alabama 36615

All comments must be sent in time to be received not later than 30 days from the date of this notice.

If you have any questions concerning this publication, you may contact Mr. Casey Ehorn at telephone number (205) 290-9096. Please refer to Public Notice number SAM-2007-00981-HWL.

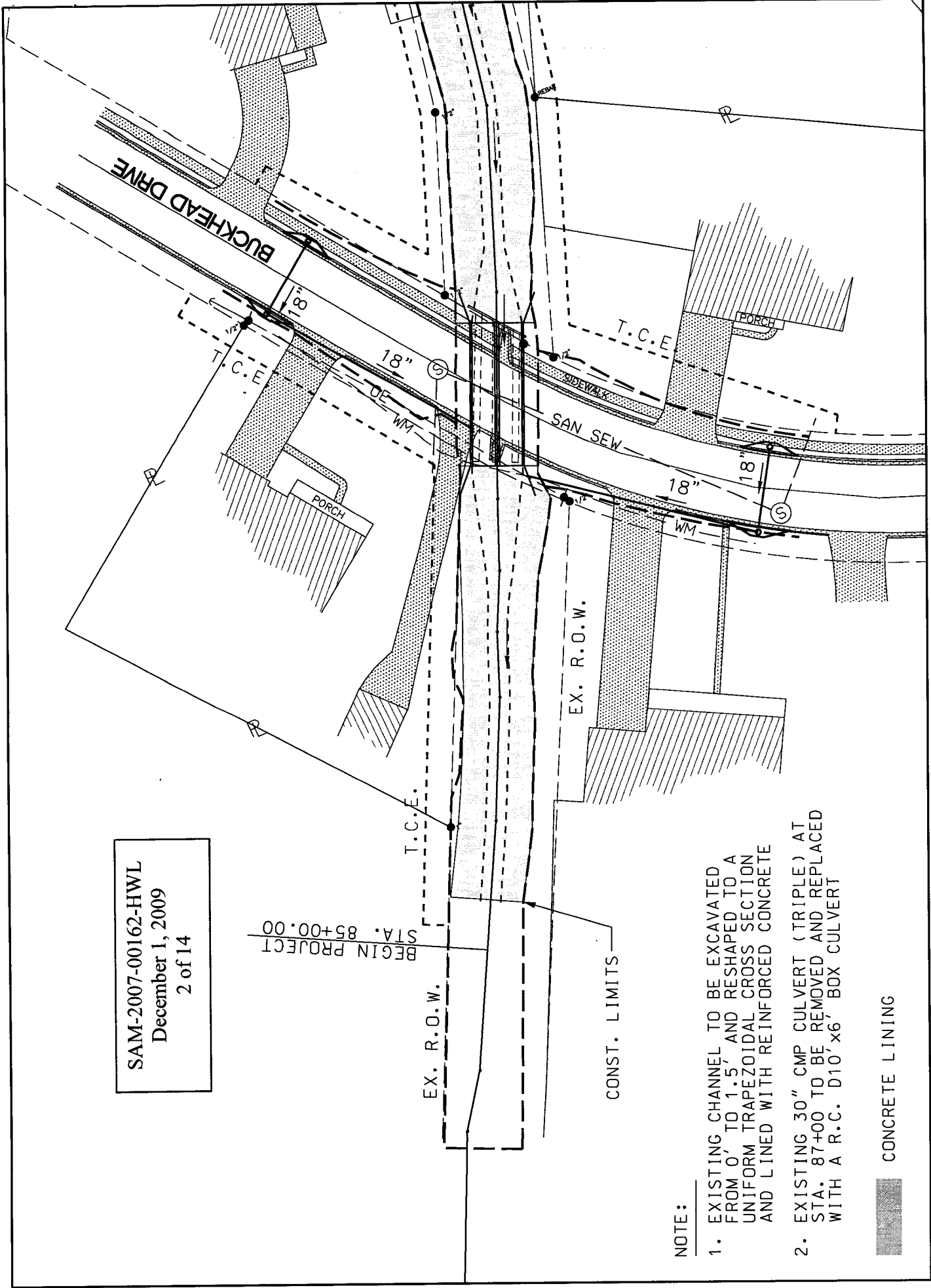
For additional information about our Regulatory Program, please visit our web site at www.sam.usace.army.mil/RD/reg, and please take a moment to complete our customer satisfaction survey while you're there. Your responses are appreciated and will allow us to improve our services.

MOBILE DISTRICT
U.S. Army Corps of Engineers

Enclosure

SAM-2007-00162-HWL
 December 1, 2009
 2 of 14

BEGIN PROJECT
 STA. 85+00.00



NOTE:

1. EXISTING CHANNEL TO BE EXCAVATED FROM 0' TO 1.5' AND RESHAPED TO A UNIFORM TRAPEZOIDAL CROSS SECTION AND LINED WITH REINFORCED CONCRETE
2. EXISTING 30" CMP CULVERT (TRIPLE) AT STA. 87+00 TO BE REMOVED AND REPLACED WITH A R.C. D10' x 6' BOX CULVERT

CONCRETE LINING

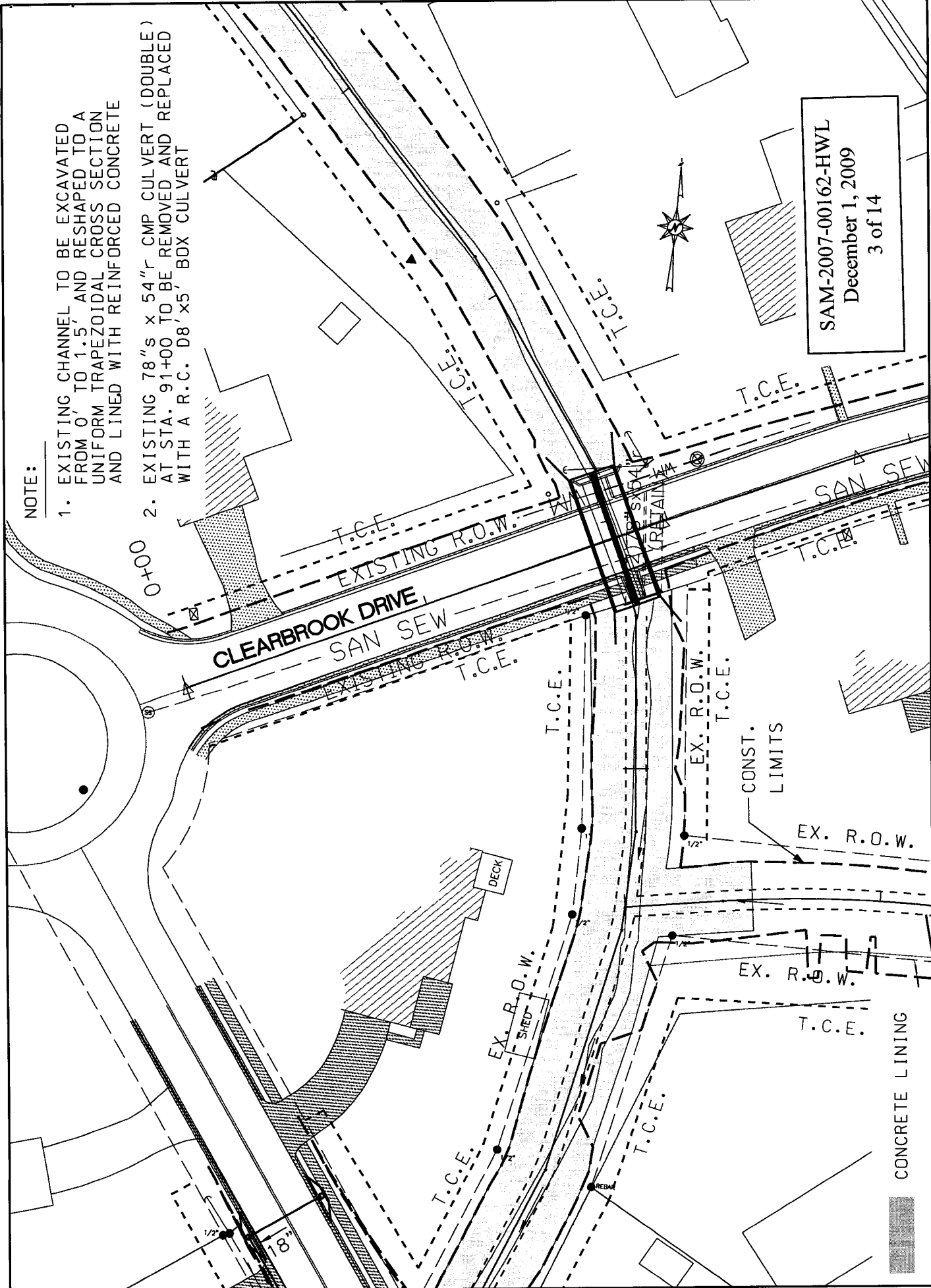
BUCKHEAD IMPROVEMENTS
 PLAN VIEW
 MAIN CHANNEL



BKJ BURK-KLEINPETER, INC.
 ENGINEERS, ARCHITECTS, PLANNERS, ENVIRONMENTAL SCIENTISTS

NOTE:

- 1. EXISTING CHANNEL TO BE EXCAVATED FROM 0' TO 1.5', AND RESHAPED TO A UNIFORM TRAPEZOIDAL CROSS SECTION AND LINED WITH REINFORCED CONCRETE
- 2. EXISTING 78" x 54" CMP CULVERT (DOUBLE) AT STA. 91+00 TO BE REMOVED AND REPLACED WITH A R.C. D8' x 5' BOX CULVERT



SAM-2007-00162-HWL
 December 1, 2009
 3 of 14



BUCKHEAD IMPROVEMENTS
 PLAN VIEW
 MAIN CHANNEL

CONCRETE LINING

BKI BURK-KLEINPETER, INC.
 ENGINEERS, ARCHITECTS, PLANNERS, ENVIRONMENTAL SCIENTISTS

BUCKHEAD DRIVE

FOXTRAIL LANE

100+00



END PROJECT
STA. 98+35.00

CONST.
LIMITS

EX. R.O.W.

T.C.E.

EX. R.O.W.

T.C.E.

T.C.E.

T.C.E.

NOTE:

- 1. EXISTING CHANNEL TO BE EXCAVATED FROM 0' TO 1.5' AND RESHAPED TO A UNIFORM TRAPEZOIDAL CROSS SECTION AND LINED WITH REINFORCED CONCRETE

CONCRETE LINING

SAM-2007-00162-HWL

December 1, 2009

5 of 14

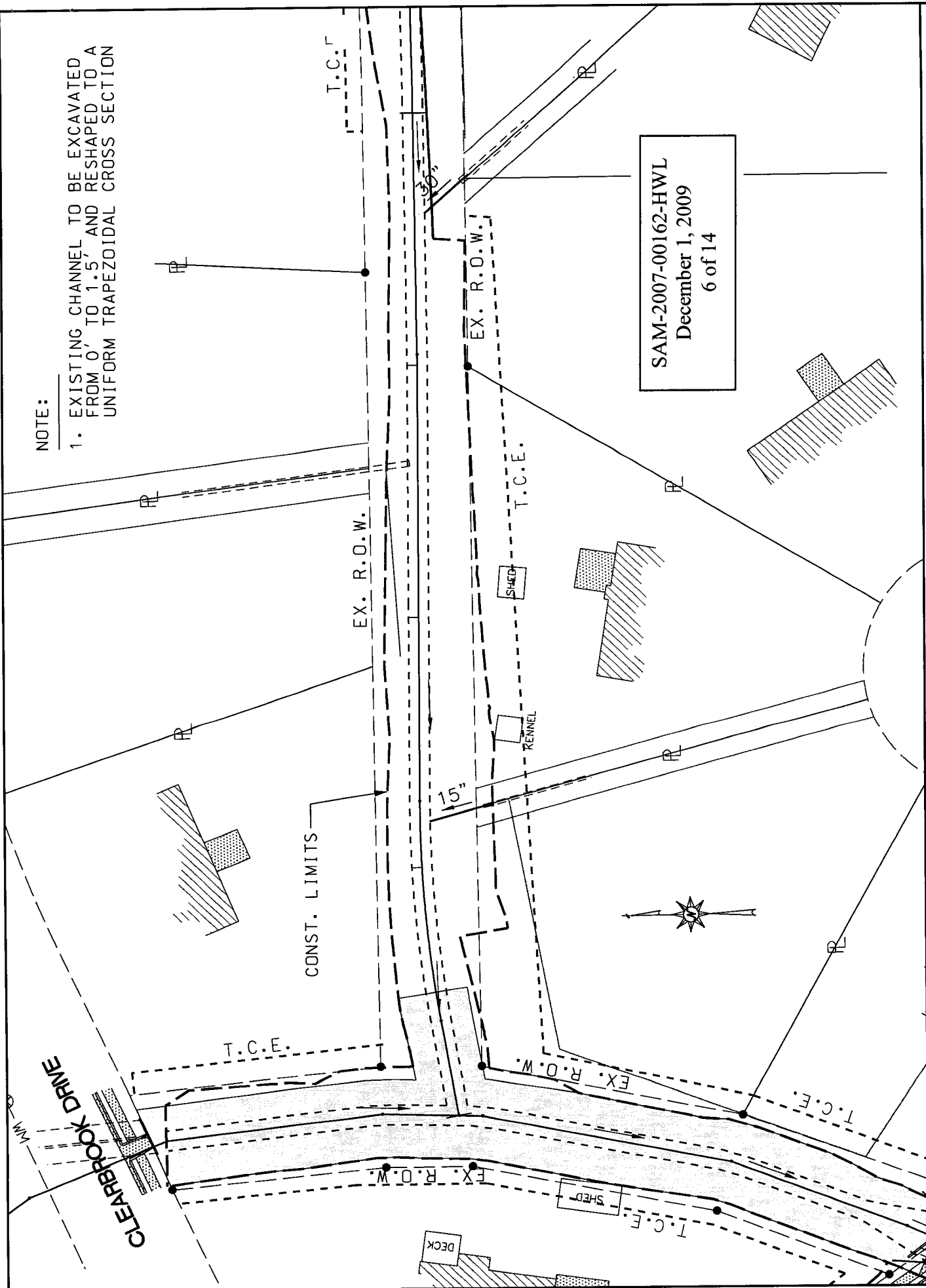


BUCKHEAD IMPROVEMENTS
PLAN VIEW
MAIN CHANNEL

BKJ BURK-KLEINPETER, INC.
ENGINEERS, ARCHITECTS, PLANNERS, ENVIRONMENTAL SCIENTISTS

NOTE:

- 1. EXISTING CHANNEL TO BE EXCAVATED FROM 0' TO 1.5' AND RESHAPED TO A UNIFORM TRAPEZOIDAL CROSS SECTION

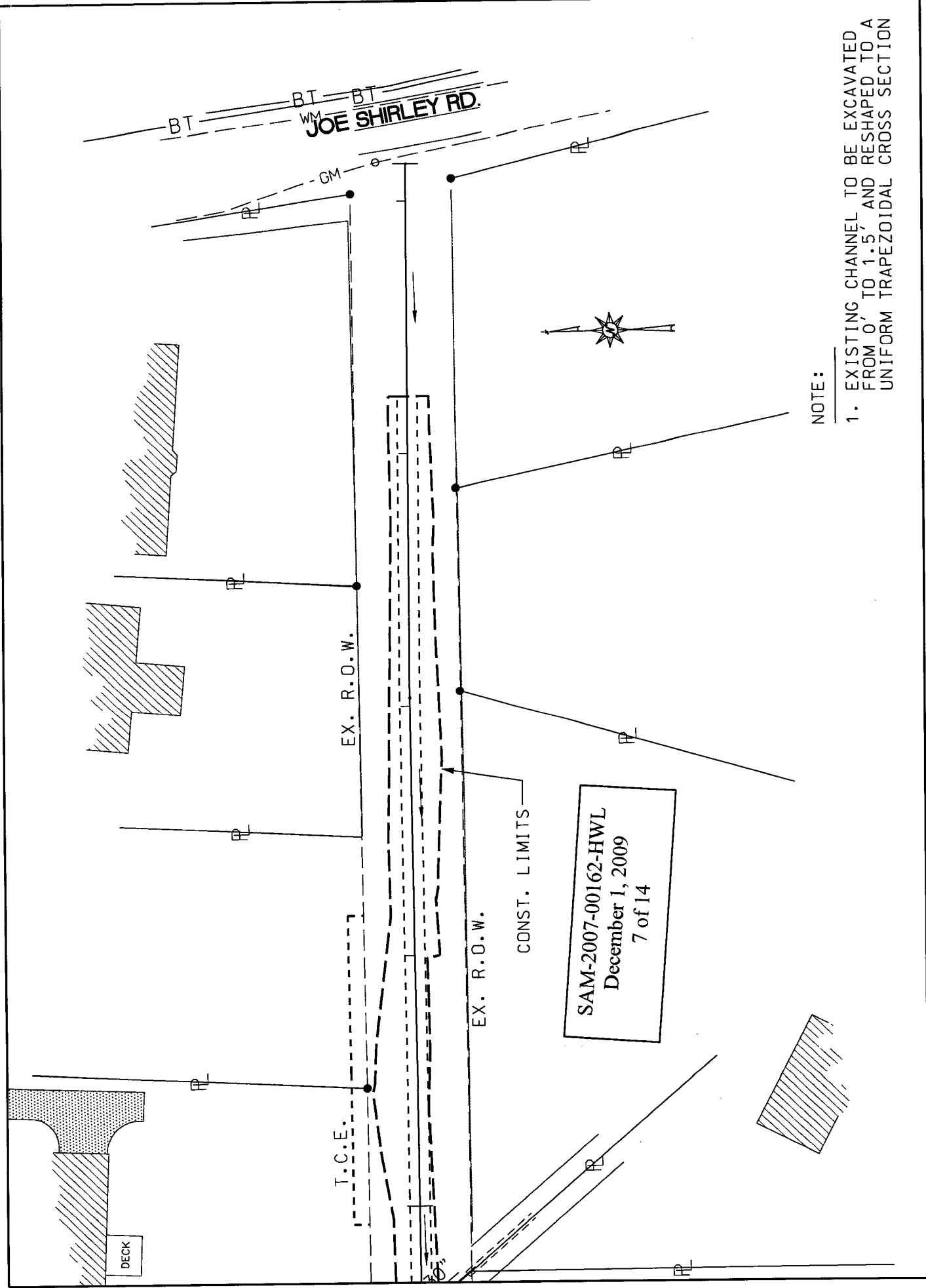


SAM-2007-00162-HWL
December 1, 2009
6 of 14



BUCKHEAD IMPROVEMENTS
PLAN VIEW
DRAINAGE DITCH

BKI BURK-KLEINPETER, INC.
ENGINEERS, ARCHITECTS, PLANNERS, ENVIRONMENTAL SCIENTISTS



BUCKHEAD IMPROVEMENTS
PLAN VIEW
DRAINAGE DITCH

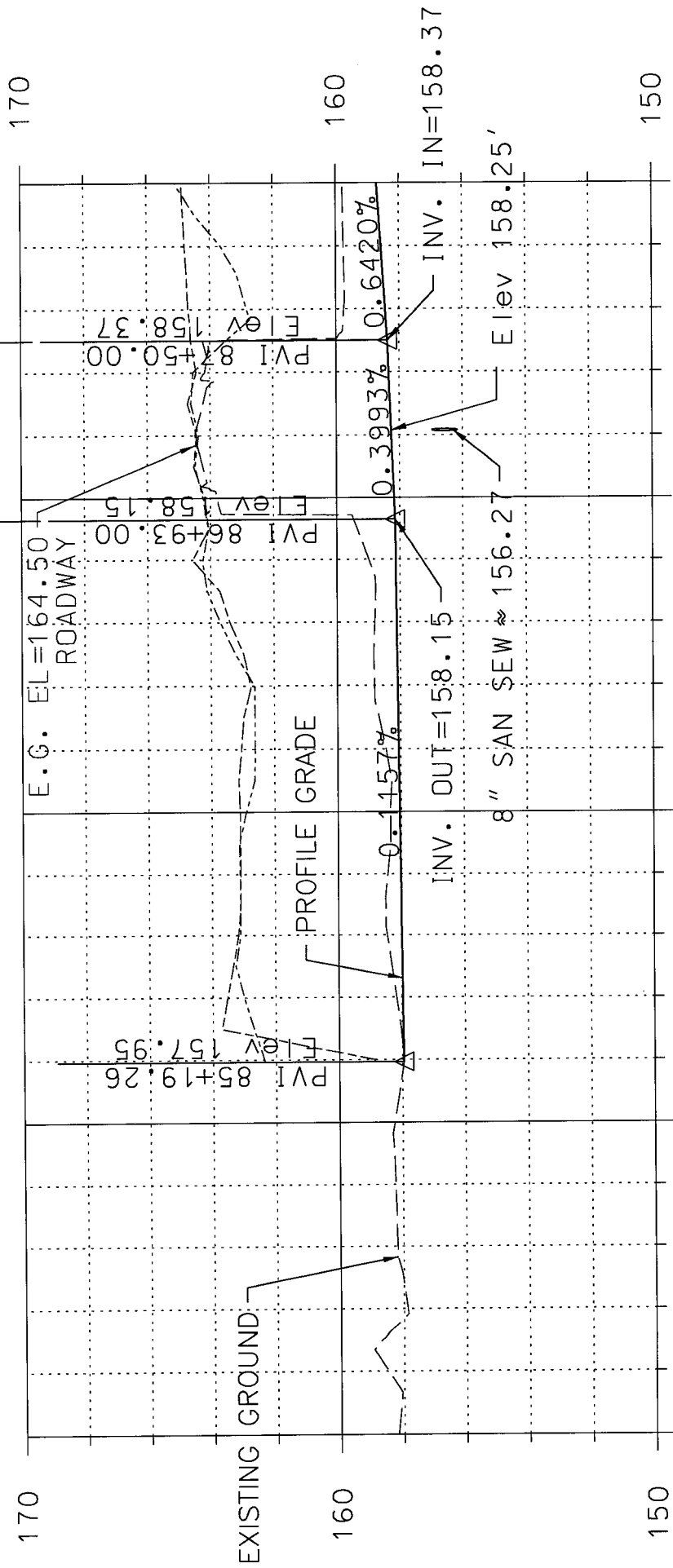
BKI BURK-KLEINPETER, INC.
ENGINEERS, ARCHITECTS, PLANNERS, ENVIRONMENTAL SCIENTISTS



NOTE:
1. EXISTING CHANNEL TO BE EXCAVATED FROM 0' TO 1.5' AND RESHAPED TO A UNIFORM TRAPEZOIDAL CROSS SECTION

SAM-2007-00162-HWL
December 1, 2009
7 of 14

REQ'D.
CD10' X6' X57'
CULVERT



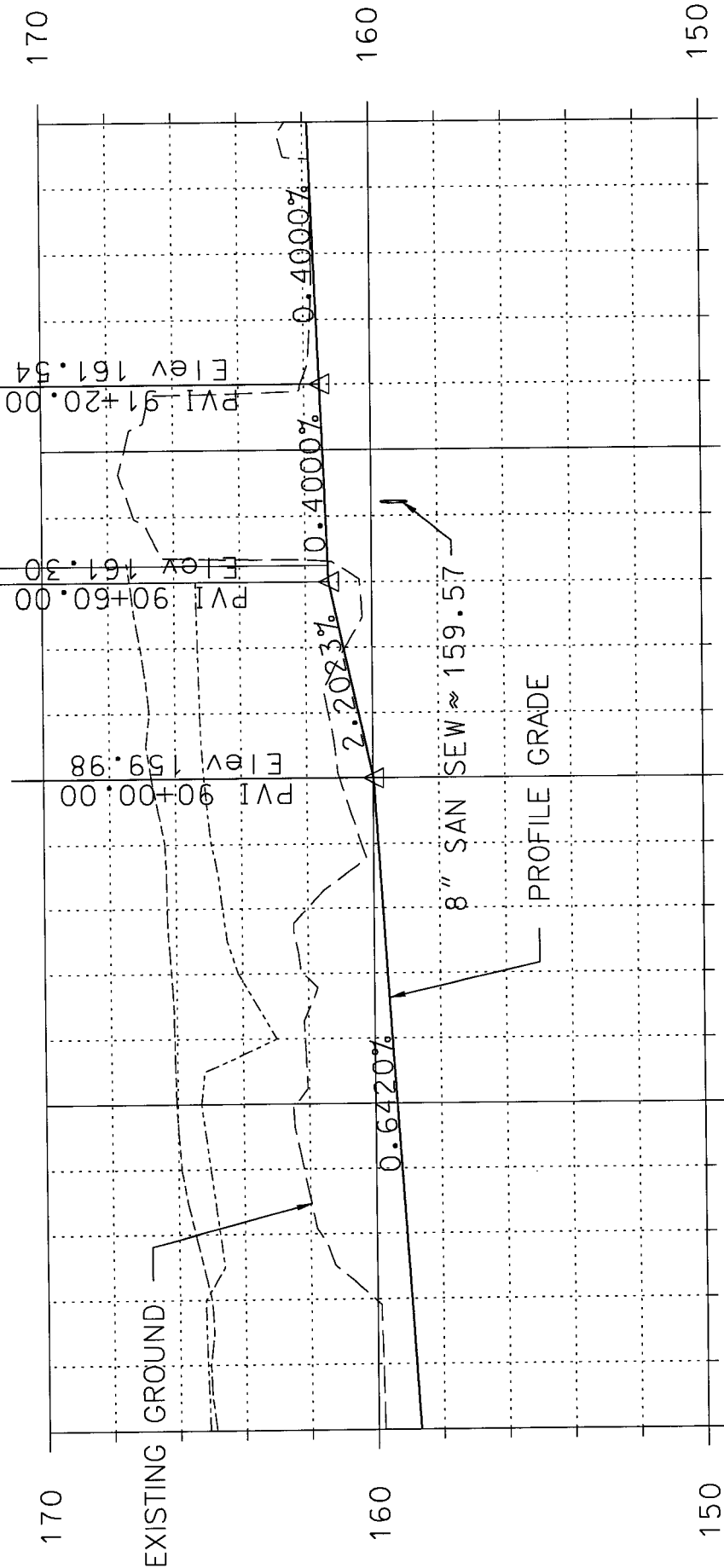
SAM-2007-00162-HWL
December 1, 2009
8 of 14



BUCKHEAD IMPROVEMENTS
PROFILE VIEW
MAIN CHANNEL

BKI BURK-KLEINPETER, INC.
ENGINEERS, ARCHITECTS, PLANNERS, ENVIRONMENTAL SCIENTISTS

REQ'D.
CD 8'x5'x55'
CULVERT
3°36' RIGHT AHEAD



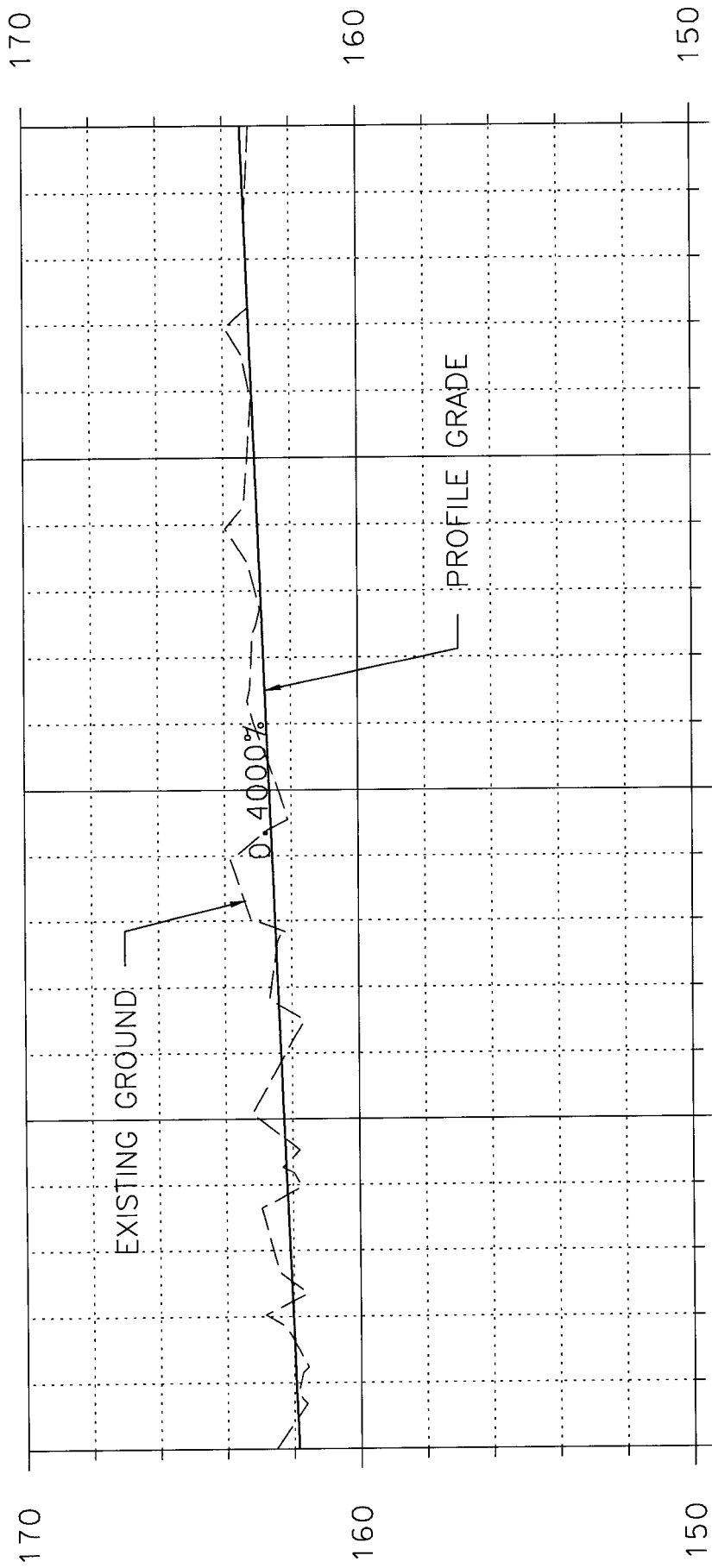
88+00 89+00 90+00 91+00 92+00

SAM-2007-00162-HWL
December 1, 2009
9 of 14



BUCKHEAD IMPROVEMENTS
PROFILE VIEW
MAIN CHANNEL

BKI BURK-KLEINPETER, INC.
ENGINEERS, ARCHITECTS, PLANNERS, ENVIRONMENTAL SCIENTISTS



96+00

95+00

93+00

92+00

170

160

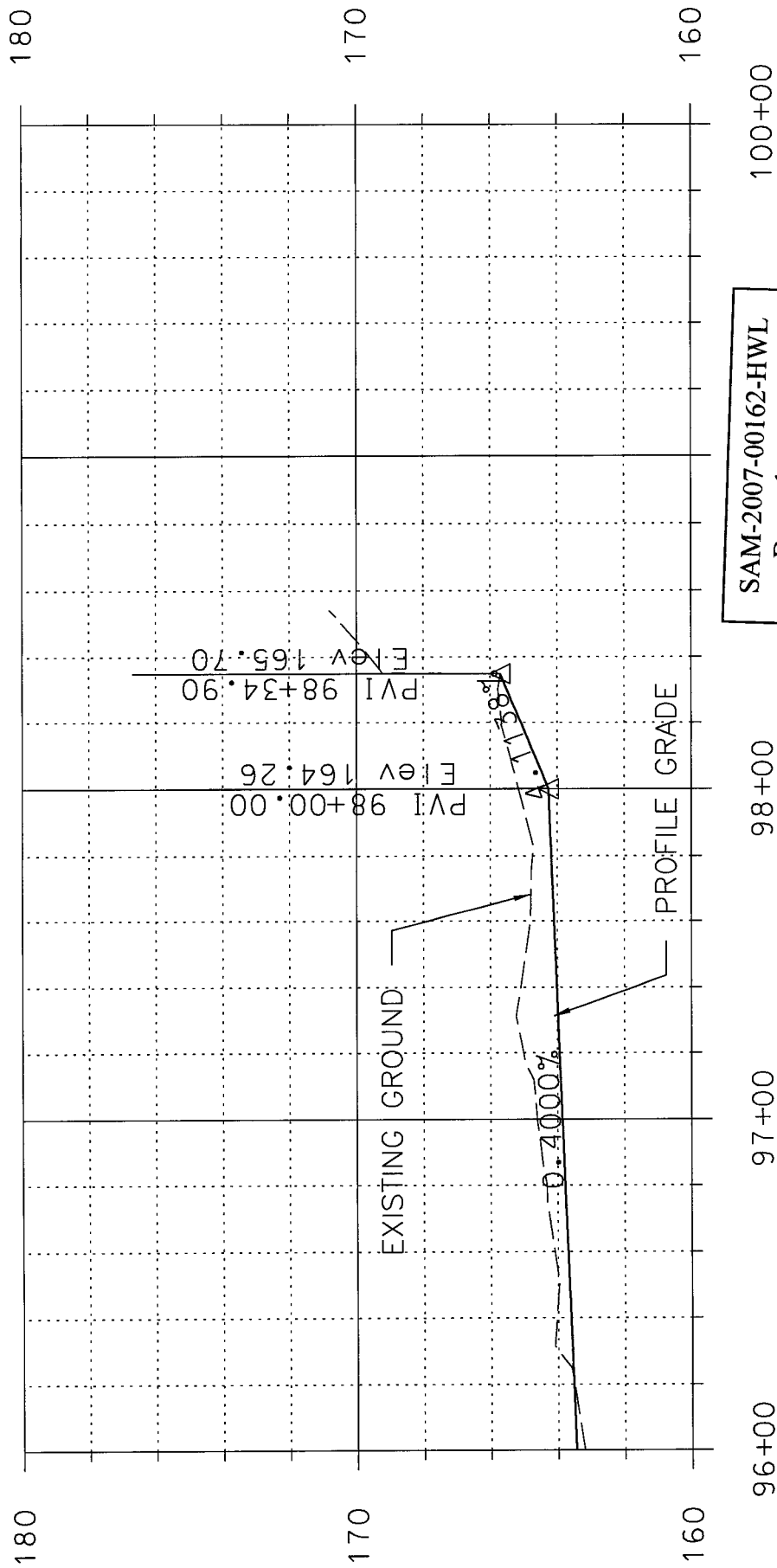
150

SAM-2007-00162-HWL
December 1, 2009
10 of 14



BUCKHEAD IMPROVEMENTS
PROFILE VIEW
MAIN CHANNEL

BKI BURK-KLEINPETER, INC.
ENGINEERS, ARCHITECTS, PLANNERS, ENVIRONMENTAL SCIENTISTS

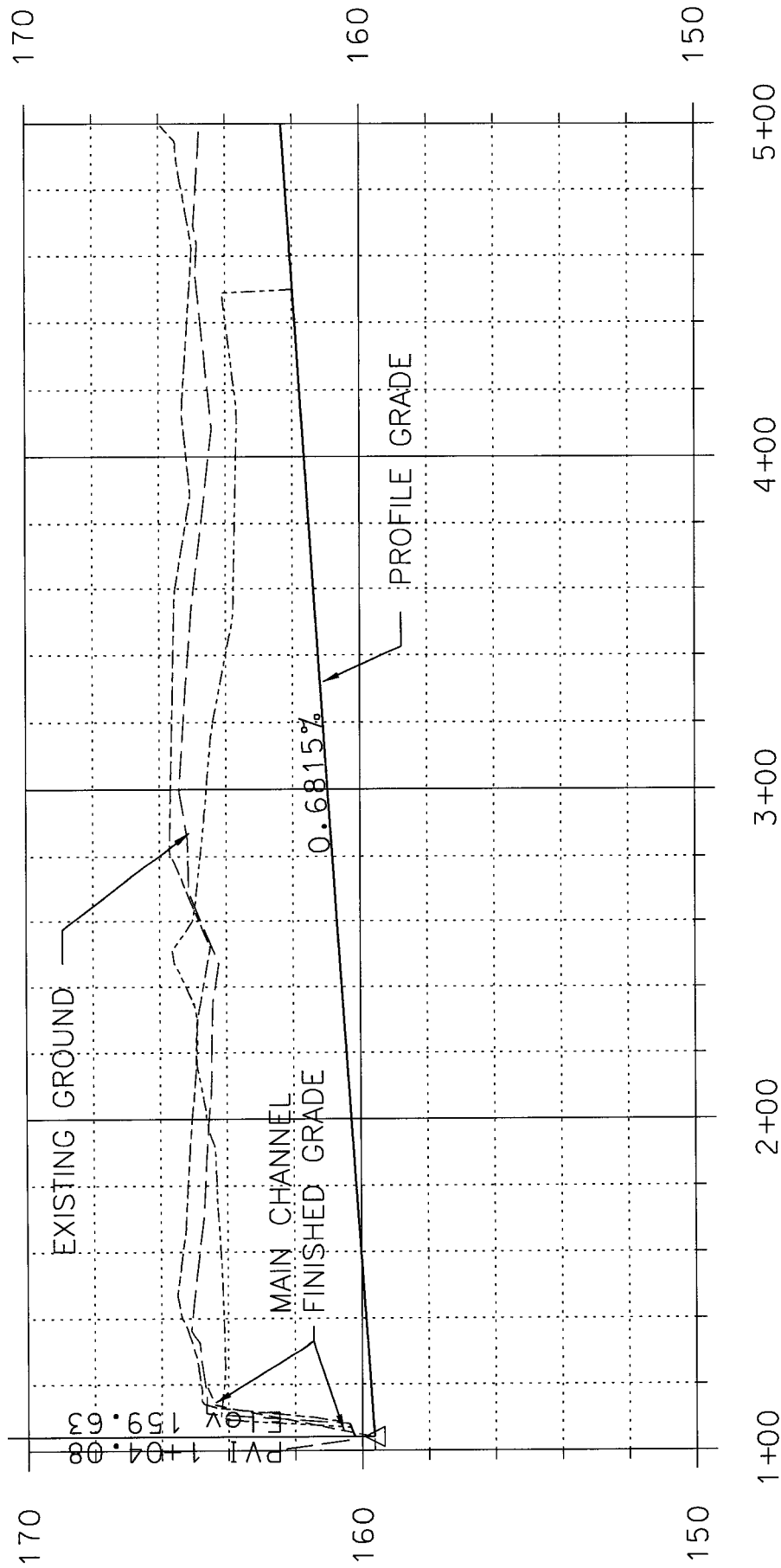


SAM-2007-00162-HWL
 December 1, 2009
 11 of 14

BUCKHEAD IMPROVEMENTS
 PROFILE VIEW
 MAIN CHANNEL

BKI BURK-KLEINPETER, INC.
 ENGINEERS, ARCHITECTS, PLANNERS, ENVIRONMENTAL SCIENTISTS



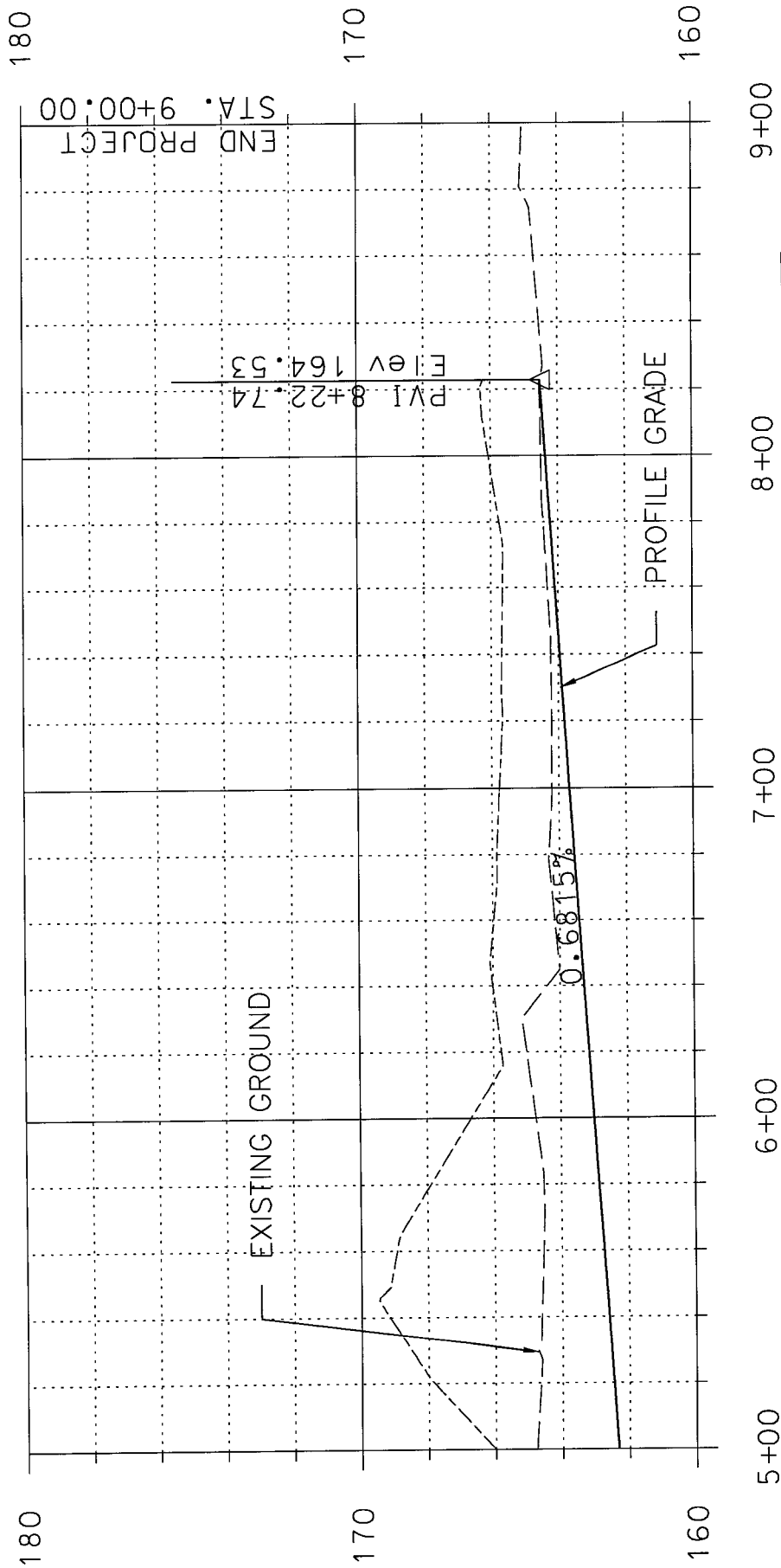


SAM-2007-00162-HWL
 December 1, 2009
 12 of 14

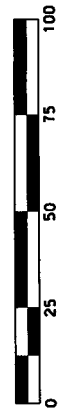
BUCKHEAD IMPROVEMENTS
 PROFILE VIEW
 DRAINAGE DITCH

BKI BURK-KLEINPETER, INC.
 ENGINEERS, ARCHITECTS, PLANNERS, ENVIRONMENTAL SCIENTISTS



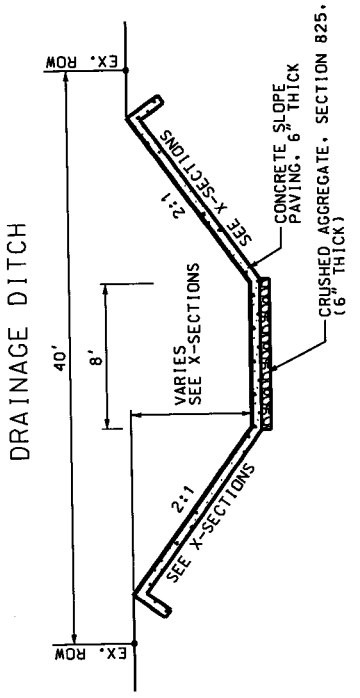


SAM-2007-00162-HWL
December 1, 2009
13 of 14

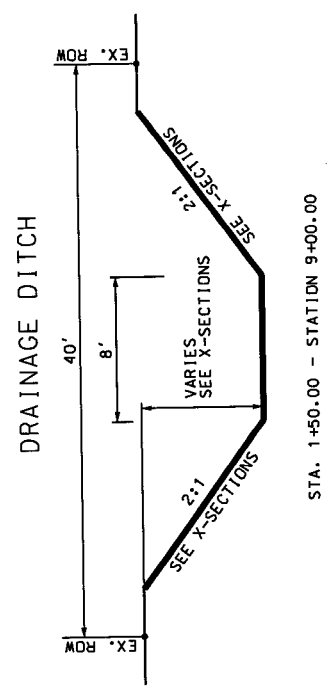


BUCKHEAD IMPROVEMENTS
PROFILE VIEW
DRAINAGE DITCH

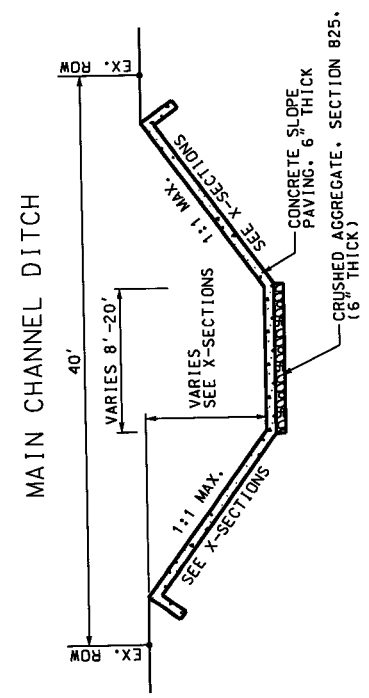
BKI BURK-KLEINPETER, INC.
ENGINEERS, ARCHITECTS, PLANNERS, ENVIRONMENTAL SCIENTISTS



STA. 1+00.00 - STATION 1+50.00



STA. 1+50.00 - STATION 9+00.00



STA. 85+19.00 - STATION 98+35.00

SAM-2007-00162-HWL
December 1, 2009
14 of 14

BUCKHEAD IMPROVEMENTS
TYPICAL CROSS SECTIONS