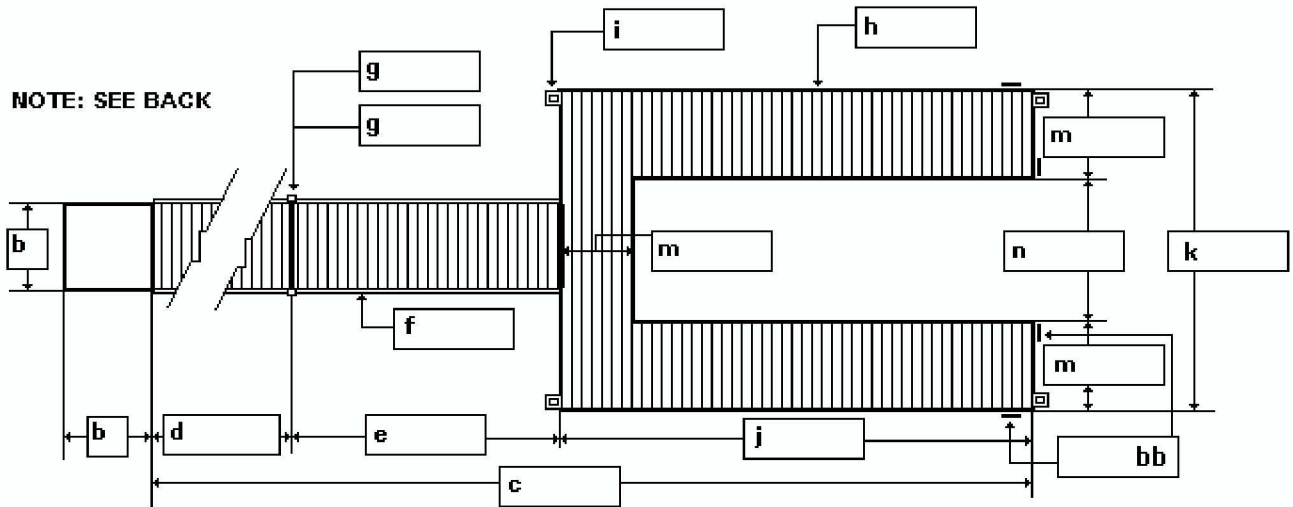


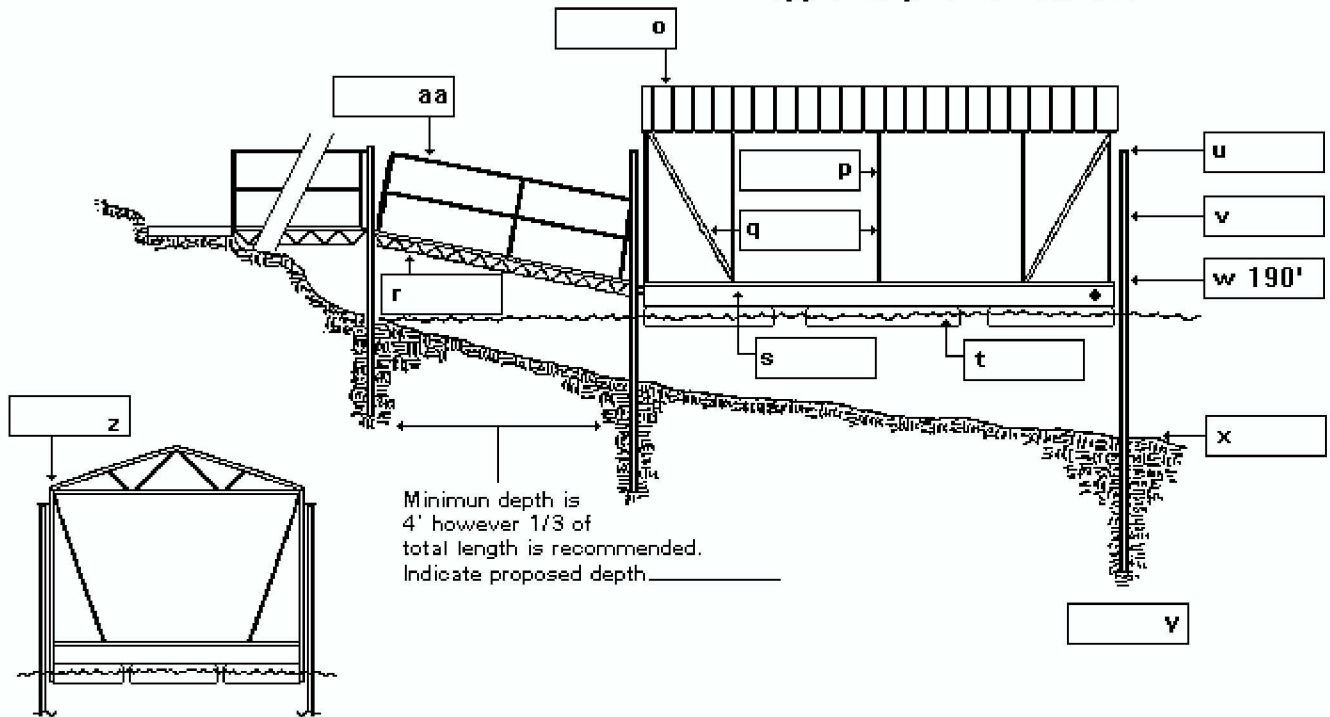
**BOAT DOCK W/SLIP PLAN
EXHIBIT "A-9"**

TOP VIEW



SIDE VIEW

NOTE: Boat Hoists or Personal Watercraft Lifts of any type must be independently approved prior to installation.



NOTE: IS THE BOAT HOUSE TURNED 90 DEGREES? (circle one) NO LEFT RIGHT

CONCEPTUALLY APPROVED
for
U.S. Army Corps of Engineers, Mobile District

BY: _____
DATE: _____

NOTICE: This approval stamp DOES NOT certify an engineering review. The builder should rely on professional engineering services to certify that the design is suitable for intended purposes and meets minimum standards including those related to the safety of the vessel.

I will construct this facility according to this plan.

Name: _____

Subdivision: _____

Lot No.: _____

- a. WRITE "SAME" IN BOXES IF THE SUGGESTED MATERIALS, DIMENSIONS, ETC. WILL BE USED. GIVE DIMENSIONS WHERE REQUESTED. MAJOR DEVIATIONS MUST BE SHOWN ON AN ORIGINAL PLAN. SLIPS MUST BE ACCOMPANIED WITH A COPY OF THE PERMITTEE'S BOAT REGISTRATION SHOWING SIZES OF BOAT.
- b. FOUNDATION PADS FOR STEPS OR WALKWAYS MUST NOT EXCEED 6'X 6'. GIVE YOUR DIMENSION IN BOX (b). IF YOU CHOOSE NOT TO HAVE A PAD, WRITE IN: N.A.
- c. MAXIMUM LENGTH OF THE TOTAL STRUCTURE FROM SHORE CAN BE 100' (INCLUDING BOATHOUSE PLATFORM) - NOT TO EXCEED 1/3 OF THE TOTAL WIDTH IN TRIBUTARY AREAS. WRITE DESIRED LENGTH IN BOX (c).
- d. WRITE IN BOX (d) THE LENGTH FROM THE BEGINNING OF THE WALKWAY TO THE HINGED SECTION.
- e. MINIMUM LENGTH OF HINGED SECTION IS 14'. GIVE DESIRED LENGTH IN BOX (e). THIS WILL NOT APPLY TO FIXED FACILITIES.
- f. WALKWAY MINIMUM 4' WIDE UP TO A MAXIMUM OF 6' WIDE, WITH CENTER STRINGER.
- g. INDICATES 4" STEEL PILING. SPECIFY MATERIAL AND NUMBER OF PILINGS TO BE USED WITH WALKWAY.
- h. INDICATES 2X6 PRESSURE TREATED DECKING OR 5 1/4" TREATED DECKING. GIVE YOUR DESIRED DIMENSION IN BOX (h).. ANY DEVIATIONS MUST BE NOTED.
- i. INDICATES POLE GUIDE DEVICE AND 4" STEEL PILING. ANY DEVIATIONS MUST BE NOTED. THIS WILL NOT APPLY TO FIXED FACILITIES.
- j. WRITE YOUR DESIRED LENGTH OF BOATHOUSE IN BOX (j).
- k. GIVE YOUR DESIRED WIDTH OF BOATHOUSE IN BOX (k).
- m. FINGER WALKWAY - MAXIMUM 6' FOR TWO SIDES AND 8' FOR THE REMAINING SIDE. GIVE DESIRED DIMENSIONS IN BOXES (m). MINIMUM WIDTH OF WALKWAYS IS 4'. TOTAL SQUARE FOOTAGE SHOULD NOT EXCEED 680 FEET. INCREASES IN SQUARE FOOTAGE MAY BE ALLOWED UP TO 900 SQ. FT., IF A NEED CAN BE JUSTIFIED, AND ONLY IF THE SPACE ALONG THE SHORELINE PERMITS.
- n. GIVE YOUR DESIRED WIDTH OF SLIP IN BOX (n).
- o. INDICATES CORRUGATED METAL SHEET ROOF. ANY DEVIATIONS MUST BE NOTED. UPPER LEVEL DECKS MUST BE APPROVED THRU THE CORPS AND CERTIFIED BY A LICENSED PROFESSIONAL WITHIN THE FIELD OF EXPERTISE. REGULATIONS DO APPLY.
- p. INDICATES 1 1/2"-14 GAUGE SQUARE STEEL TUBE FRAMING WITH WELDED JOINTS. ANY DEVIATIONS MUST BE NOTED IN BOX (p).
- q. SUPPORT POSTS ARE EVERY 8' OR LESS. ANY DEVIATIONS MUST BE NOTED IN BOX (q). SWAY BRACES INSTALLED ON ALL CORNERS. FENCE ENCLOSURES ARE PERMITTED; SOLID WALLS ARE NOT PERMITTED.
- r. INDICATES 12" STEEL BAR JOIST. ANY DEVIATIONS MUST BE NOTED IN BOX (r).
- s. INDICATES 14 GAUGE STEEL FRAME WITH WELDED JOINTS. ANY DEVIATIONS MUST BE NOTED IN BOX (s).
- t. FLOTATION SHALL BE OF MATERIALS WHICH WILL NOT BECOME WATERLOGGED (NOT OVER 1/ 2 PERCENT BY VOLUME ASTM), IS RESISTANT TO DAMAGE BY ANIMALS, AND WILL NOT SINK OR CONTAMINATE THE WATER IF PUNCTURED. NO METAL COVERED OR INJECTED DRUM FLOTATION WILL BE ALLOWED. FOAM BEAD FLOTATION THAT IS NOT SUBJECT TO DETERIORATION THROUGH LOSS OF BEADS, MEETS THE ABOVE CRITERIA, AND HAS A MINIMUM DENSITY OF 1.2 LB/CU. FT. IS AUTHORIZED. FOAM BEAD FLOTATION WITH A DENSITY OF 1.0 LB/CU. FT. BUT DOES NOT OTHERWISE MEET THE ABOVE CRITERIA IS AUTHORIZED PROVIDED IT IS ENCASED IN AN APPROVED PROTECTIVE COATING WHICH ENABLES IT TO MEET THE SPECIFICATIONS ABOVE. AN APPROVED COATING IS DEFINED AS WARRANTED BY THE MANUFACTURER FOR A PERIOD OF AT LEAST (8) EIGHT YEARS AGAINST CRACKING, PEELING, SLOUGHING AND DETERIORATION FROM ULTRA VIOLET RAYS, WHILE RETAINING ITS RESILIENCY AGAINST ICE AND BUMPS BY WATERCRAFT. THIS WILL NOT APPLY TO FIXED FACILITIES.
- u. TOP OF THE PILING TO BE AT LEAST 196' ABOVE SEA LEVEL. GIVE YOUR PROPOSED PILING HEIGHT IN BOX (u). THIS WILL NOT APPLY TO FIXED FACILITIES.
- v. TOP OF THE WALKWAY TO BE AT LEAST 192.0' OR 192.5' ABOVE SEA LEVEL. GIVE YOUR PROPOSED ELEVATION IN BOX (v).
- w. INDICATES THE UPPER POOL LEVEL AT 190' ABOVE SEA LEVEL.
- x. GIVE ELEVATION OF LAKE BOTTOM BENEATH END OF BOATHOUSE.
- y. PILING TO BE DRIVEN TO A DEPTH OF 1/3 OF TOTAL LENGTH. ANY DEVIATIONS MUST BE NOTED IN BOX (y). FIXED DOCK POSTS SHOULD BE DRIVEN IN WITH AT LEAST A 500 POUND HAMMER. NO JETTING PILINGS INTO THE GROUND.
- z. INDICATES PITCH OF ROOF AT 4/12. LOWER EDGE OF ROOF 7 TO 8 FEET HIGH. NOTE ANY DEVIATIONS IN BOX (z).
- aa. HANDRAIL CONSTRUCTED FROM 1.5", 14 GAUGE SQUARE STEEL TUBING, ON BOTH SIDES OF WALK. HEIGHT 39" - 42", WITH AN INTERMEDIATE RAIL 19"- 22" HIGH. MAXIMUM DISTANCE BETWEEN SUPPORT POSTS ON HANDRAILS IS 8 FEET. VERTICAL POSTS CAN BE USED IN PLACE OF MID-RAILS IF THEY ARE 12 INCHES OR LESS APART.
- bb. SAFETY REFLECTORS. OWNERS OF NEW, REASSIGNED OR REISSUED BOAT DOCK FACILITIES ARE REQUIRED TO SUPPLY, INSTALL AND MAINTAIN AT LEAST FOUR, THREE INCH DIAMETER ORANGE REFLECTORS. THESE REFLECTORS ARE TO BE PLACED ON EACH SIDE OF THE FRONT CORNERS OF THE DOCK, VISIBLE AT NIGHT TO VESSEL SPOTLIGHTS. REFLECTORS MUST BE REPLACED WHEN THEY BECOME MISSING OR DAMAGED BEYOND THEIR EFFECTIVENESS.

