



REPLY TO
ATTENTION OF:

DEPARTMENT OF THE ARMY
MOBILE DISTRICT, CORPS OF ENGINEERS
P.O. BOX 2288
MOBILE, ALABAMA 36628-0001

CESAM-RD
PUBLIC NOTICE NO.: SAM-2016-01184-MBM

May 1, 2017

JOINT PUBLIC NOTICE
U.S. ARMY CORPS OF ENGINEERS

MISSISSIPPI DEPARTMENT OF ENVIRONMENTAL QUALITY
OFFICE OF POLLUTION CONTROL

MISSISSIPPI DEPARTMENT OF MARINE RESOURCES

PROPOSED WOLF RUN MITIGATION BANK II,
PEARL RIVER COUNTY, MISSISSIPPI

TO WHOM IT MAY CONCERN:

This District, has received a completed prospectus for the proposed establishment of a mitigation bank referred to as the **Wolf Run Mitigation Bank II**. Please communicate this information to interested parties.

BANK SPONSOR: Wolf Run L.L.C.
C/o Goodwyn, Mills & Cawood, Inc.
Attention: Mr. Lee Walters
11 North Water Street
Suite 15250
Mobile, Alabama 36602

Wolf Run L.L.C. proposes to establish a 72.25-acre commercial stream mitigation bank, adjacent to their existing approved 721.21-acre Wolf Run Mitigation Bank, to generate stream mitigation credits for purchase by interested Department of Army (DOA) permit applicants in order to fulfill compensatory mitigation requirements for various project-related stream impacts subject to U.S. Army Corps of Engineers (Corps) regulatory authority pursuant to Section 404 of the Clean Water Act. The mitigation bank will utilize the 2012 Mobile District Compensatory Stream Mitigation Standard Operating Procedures and Guidelines. Approval for DOA permittees to use bank mitigation credits would be determined on a case-by-case basis at the time of permit evaluation. The service area for the mitigation bank will be Hydrologic Unit Code 3170009 and all portions of Pearl River, Stone, George, Hancock, Harrison, and Jackson Counties. Use of bank outside of designated service area may be authorized on a case-by-case basis using the Proximity Factor Method. The proposed Wolf Run mitigation bank is located along Murder Creek, in Sections 14, 15, and 22 of Township 3 South, Range 14 West, Latitude 30°46'49" North, Longitude 89°22'33" West, east of Poplarville, Pearl River County, Mississippi. The goal of the stream mitigation includes enhancement of riparian buffers along 2,401 linear feet of intermittent streams, 2,772 linear feet of unnamed perennial stream, and 7,508 linear feet of riparian buffer along Murder Creek. Perennial streams will have 200-foot wide riparian buffers and intermittent streams will have 100-foot wide riparian buffers. The riparian buffers have been historically managed for pine

plantation and selective timber harvesting, and contain a high density of exotic invasive species. In order to develop mitigation credits in these areas, the sponsor will perform bottomland hardwood wetland enhancement activities that include, but are not limited to removal of undesirable tree species, bed leveling, and planting of native bottomland hardwood species to achieve target species composition, density and diversity.

On 10 April 2008 the U.S. Army Corps of Engineers and the U.S. Environmental Protection Agency issued new regulations, in the Federal Register, Vol. 73, No. 70, governing compensatory mitigation for losses of aquatic resources. The new regulation, 33 CFR 332 – Compensatory Mitigation for Losses of Aquatic Resources, establishes performance standards and criteria for mitigation projects including mitigation banks. Part 33 CFR 332.8 addresses requirements for establishing, operating, and maintaining mitigation banks that provide credits to satisfy mitigation requirements of the Clean Water Act, Section 404 permit program. Recognizing the potential benefits mitigation banking offers for streamlining the permit evaluation process and providing more effective mitigation for authorized impacts to wetlands, the agencies encourage the establishment and appropriate use of mitigation banks in the Section 404 program. This guidance became effective 9 June 2008.

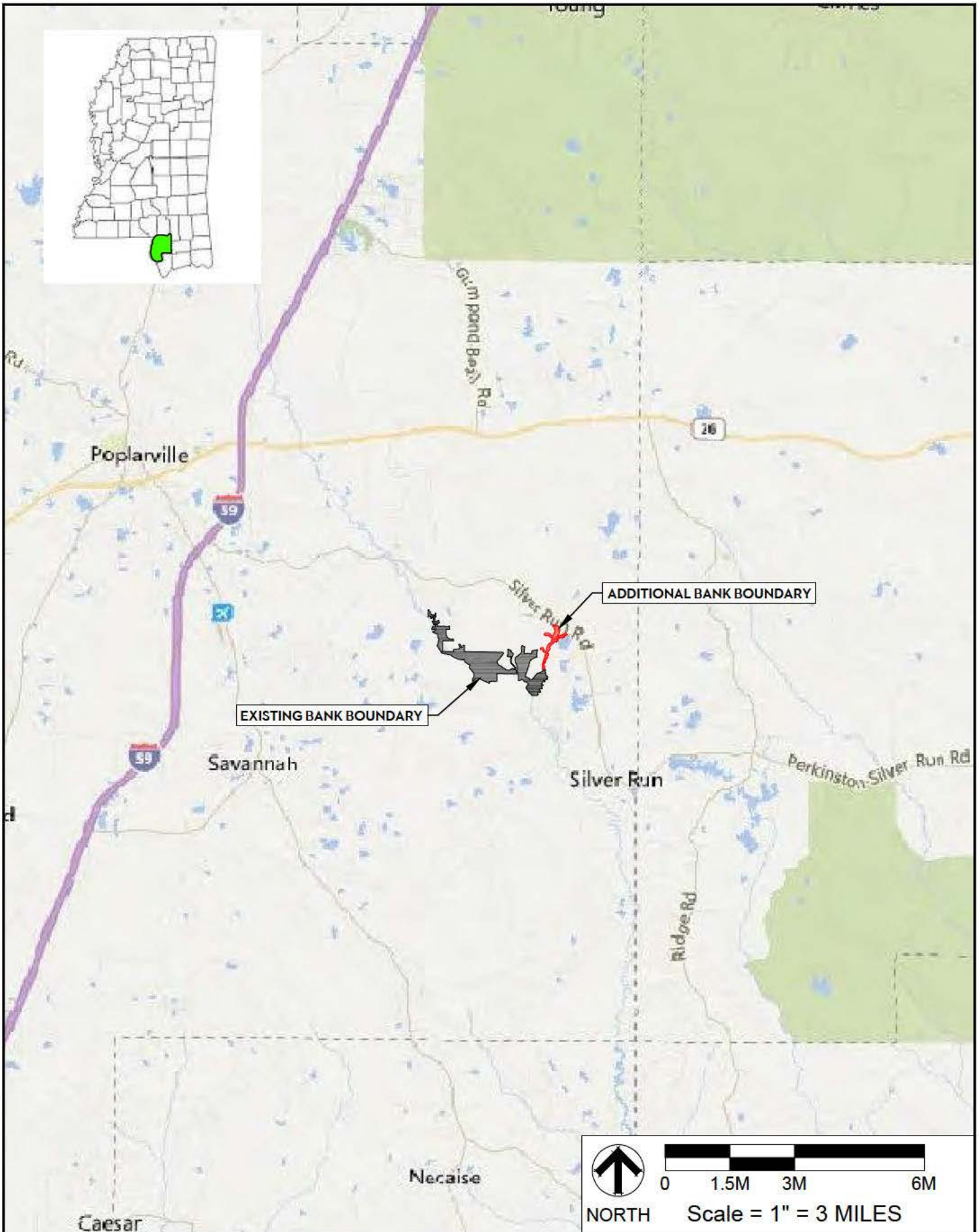
An interagency group of Federal and State regulatory and resource agency representatives, as appropriate given the projected use for the bank, referred to as the Interagency Review Team (IRT), is signatory to a banking instrument and oversees the establishment, use and operation of a mitigation bank. Information provided in the prospectus will serve as the basis for establishing a banking instrument which will describe in detail the physical and legal characteristics of the bank and how the bank will be established and operated.

The Corps is soliciting comments from the public; Federal, State and local agencies and officials; Indian Tribes; and other interested parties for consideration while evaluating this proposed activity. Copies of all comments received will be distributed to the other members of the IRT and the bank sponsor for full consideration in the development of the mitigation bank.

Comments concerning this Public Notice should be received within 30 days of the date of this public notice and should refer to number **SAM-2016-01184-MBM** and direct your correspondence to the District Commander, U.S. Army Engineer District, Mobile, Post Office Box 2288, Mobile, Alabama 36628-0001, Attention: Regulatory Division; with a copy to the Mississippi Department of Environmental Quality, Office of Pollution Control, Post Office Box 2261, Jackson, Mississippi 39225, and the Mississippi Department of Marine Resources, 1141 Bayview Avenue, Suite 101, Biloxi, Mississippi 39530. If you have any questions concerning this publication, please contact Mr. Michael Moxey, Project Manager, at michael.b.moxey@usace.army.mil or telephone number (251) 690-2658.

MOBILE DISTRICT
U.S. Army Corps of Engineers

Enclosures



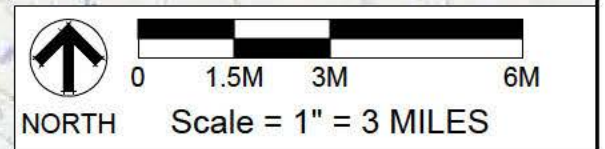
REF. SHEET: BING STREET MAP
 DESCRIPTION: PROSPECTUS FIGURES

**WOLF RUN MITIGATION BANK
 BANK ADDITION**

PEARL RIVER COUNTY, MISSISSIPPI

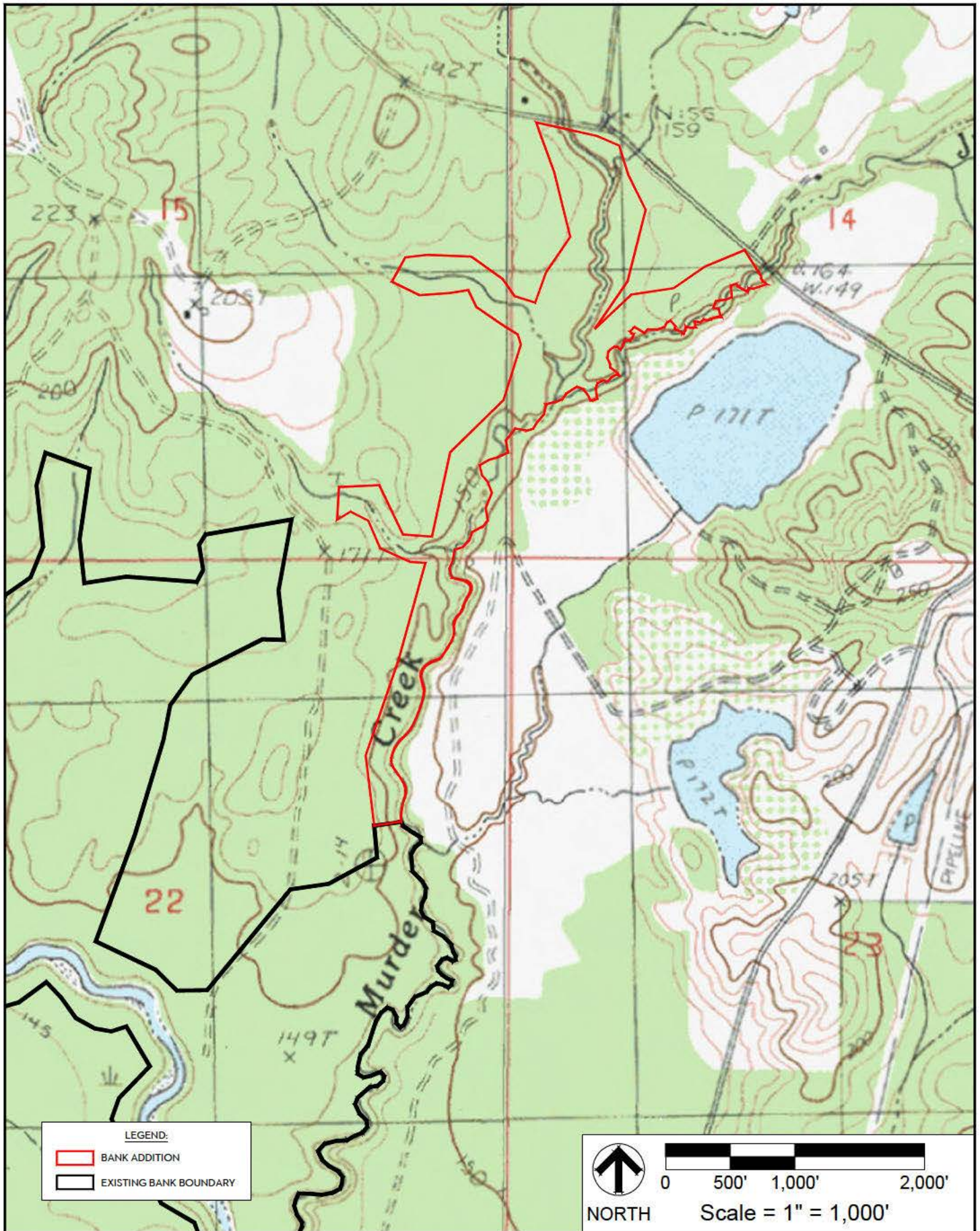
FIGURE 1

GENERAL LOCATION MAP
 GMC # E10517
 DATE: 01/24/2017
 DRAWN BY: GLB



GOODWYN | MILLS | CAWOOD

2660 EastChase Lane, Suite 200 | Montgomery, AL 36117
 Tel 334.271.3200 | GMCNETWORK.COM



REF. SHEET: 1983 PROVISIONAL ADDITION BIG SWAMP, MISSISSIPPI USGS QUADRANGLE
 DESCRIPTION: PROSPECTUS FIGURES

**WOLF RUN MITIGATION BANK
 BANK ADDITION**
 PEARL RIVER COUNTY, MISSISSIPPI

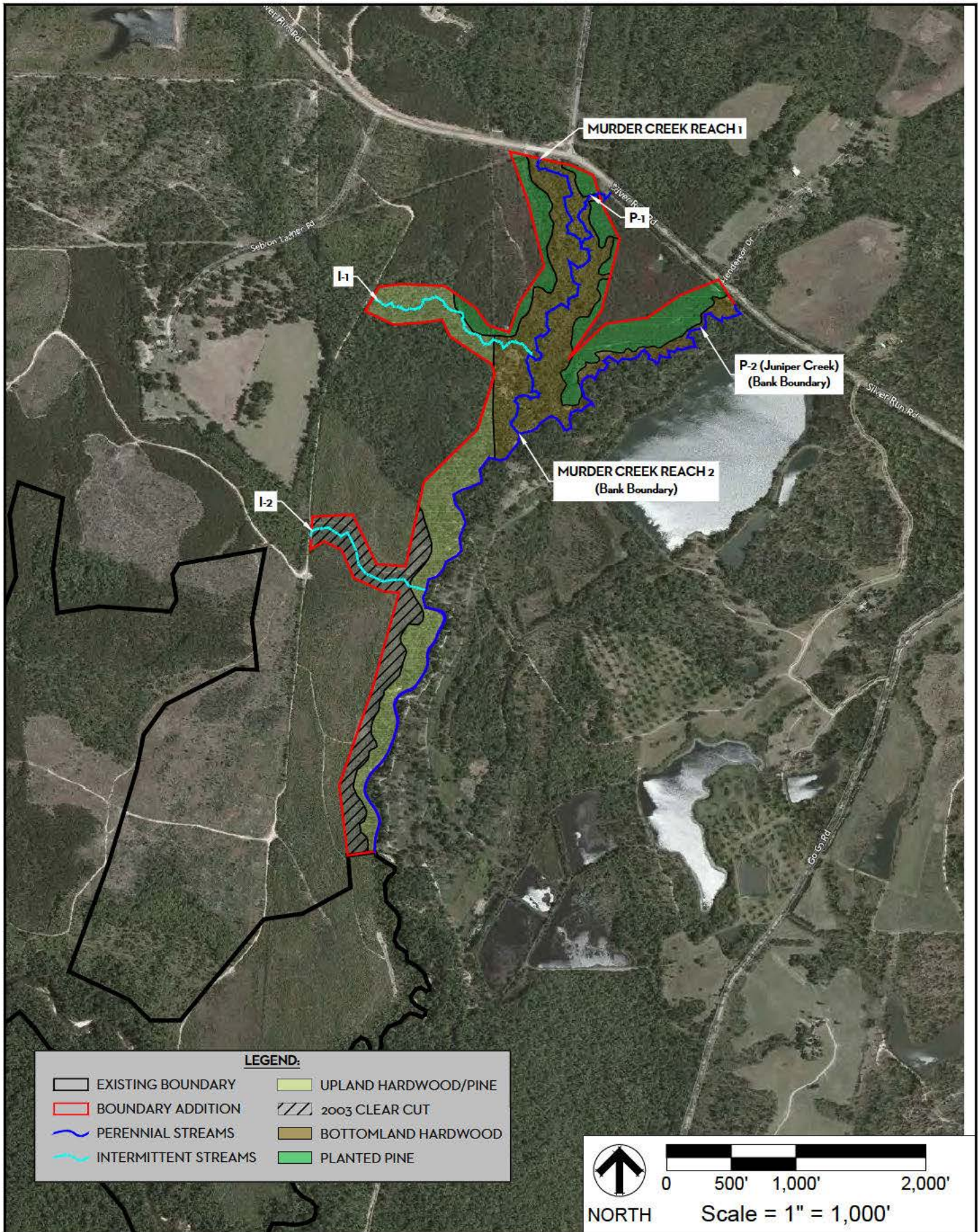
FIGURE 3

AERIAL PHOTOGRAPH
 GMC # E10517
 DATE: 01/24/2017
 DRAWN BY: GLB



GOODWYN | MILLS | CAWOOD

2660 EastChase Lane, Suite 200 | Montgomery, AL 36117
 Tel 334.271.3200 | GMCNETWORK.COM



REF. SHEET: BING AERIAL PHOTOGRAPH
 DESCRIPTION: PROSPECTUS FIGURES

**WOLF RUN MITIGATION BANK
 BANK ADDITION**
 PEARL RIVER COUNTY, MISSISSIPPI

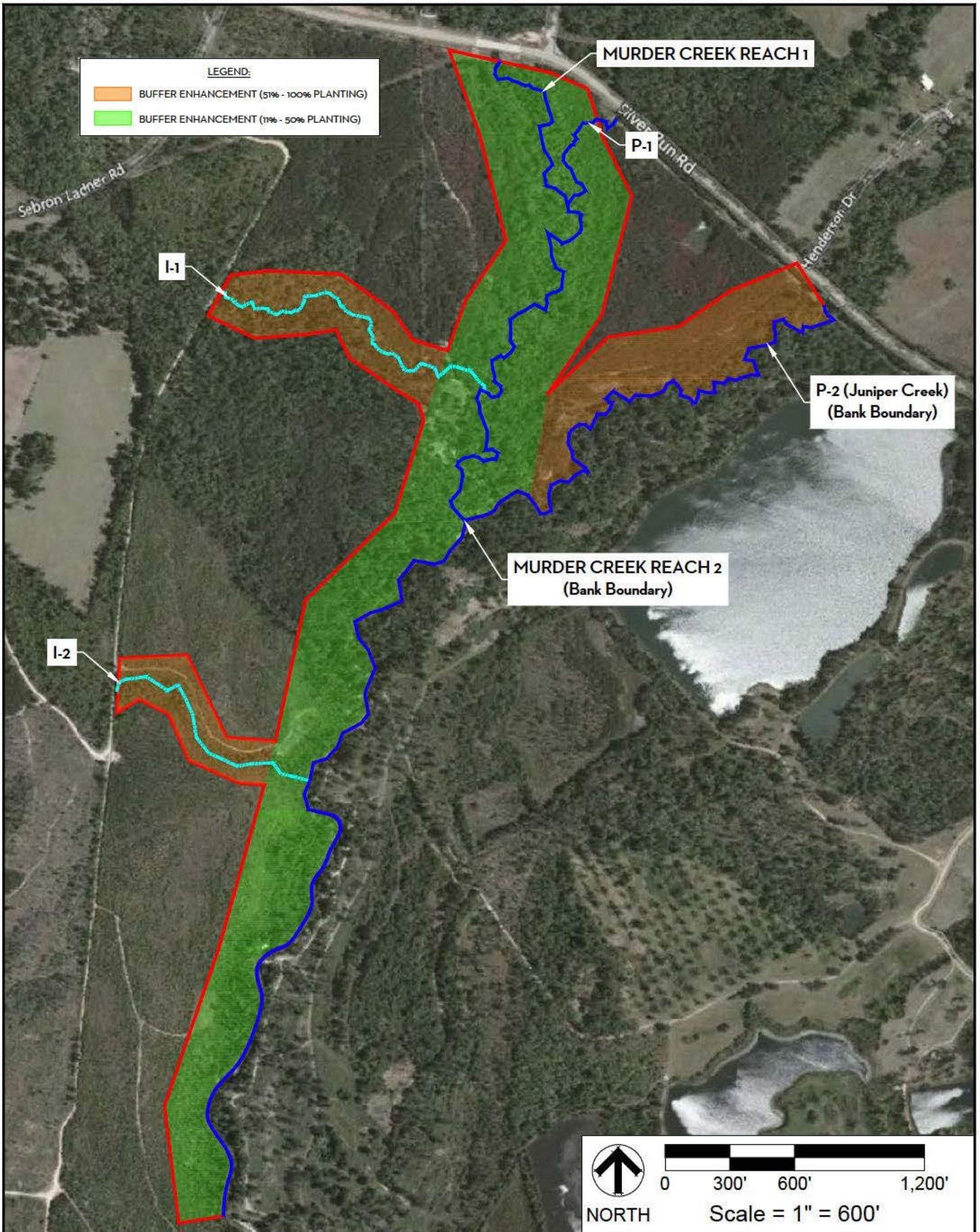
FIGURE 4

EXISTING CONDITIONS MAP
 GMC # E10517
 DATE: 01/24/2017
 DRAWN BY: GLB



GOODWYN | MILLS | CAWOOD

2660 EastChase Lane, Suite 200 | Montgomery, AL 36117
 Tel 334.271.3200 | GMCNETWORK.COM



LEGEND:
 [Brown Box] BUFFER ENHANCEMENT (51% - 100% PLANTING)
 [Green Box] BUFFER ENHANCEMENT (11% - 50% PLANTING)

MURDER CREEK REACH 1

P-1

I-1

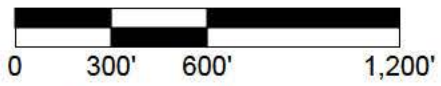
P-2 (Juniper Creek)
(Bank Boundary)

MURDER CREEK REACH 2
(Bank Boundary)

I-2



NORTH



Scale = 1" = 600'

REF. SHEET: BING AERIAL PHOTOGRAPH
 DESCRIPTION: PROSPECTUS FIGURES

**WOLF RUN MITIGATION BANK
 BANK ADDITION**
 PEARL RIVER COUNTY, MISSISSIPPI

FIGURE 5

CONCEPTUAL SITE PLAN
 GMC # E10517
 DATE: 01/24/2017
 DRAWN BY: GLB



GOODWYN | MILLS | CAWOOD

2660 East Chase Lane, Suite 200 | Montgomery, AL 36117
 Tel 334.271.3200 | GMCNETWORK.COM