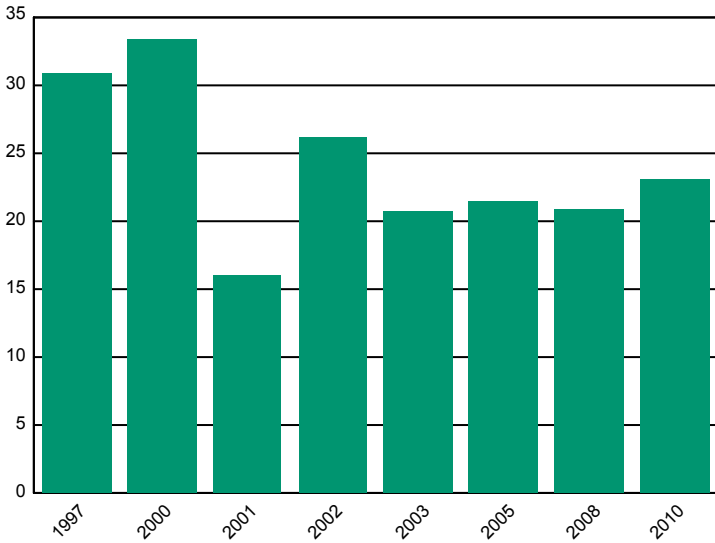


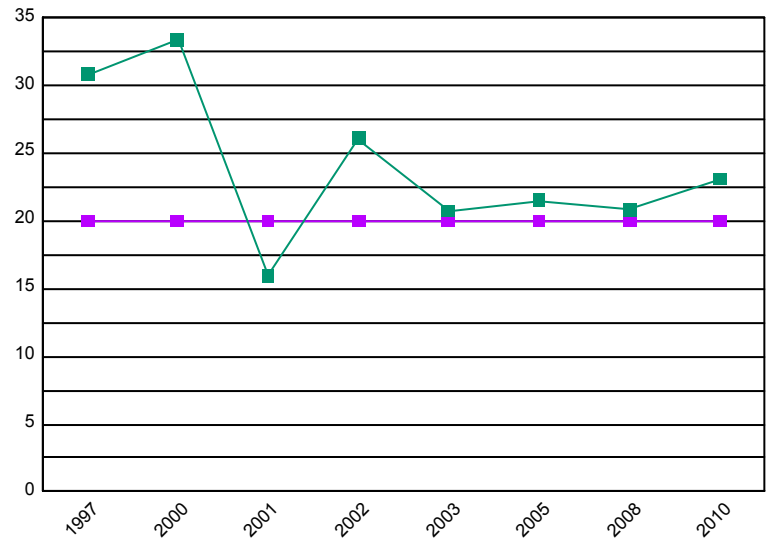
WEIC-1	Samples/Year	Chl a Nutrient: 2001						Years Sampled: 1992 - 2010	
		N	Chl A	Tot N	TKN	NO3+NO2-N	NH3-N	DRP	Tot P
1997	7	30.81	0.477	0.409	0.067	0.01	0.006	0.077	
2000	7	33.32	0.808	0.769	0.039	0.05	0.012	0.073	
2001	7	15.96	0.418	0.362	0.056	0.04	0.007	0.076	
2002	7	26.09	0.618	0.586	0.032	0.05	0.008	0.052	
2003	7	20.69	0.315	0.228	0.087	0.01	0.011	0.070	
2005	7	21.50	0.619	0.570	0.050	0.02	0.006	0.048	
2008	7	20.82	0.583	0.577	0.006	0.01	0.008	0.053	
2010	7	23.09	0.529	0.508	0.022	0.01	0.005	0.049	
		24.42	0.55	0.51	0.04	0.02	0.009	0.064	

Average Chl a



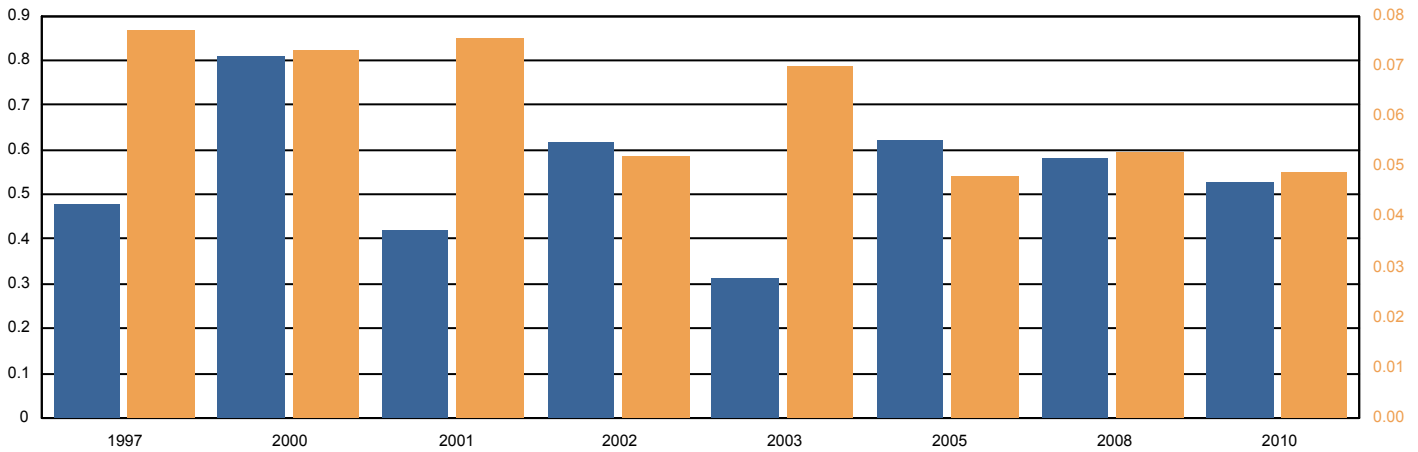
Chl A Nutrient: 20 (Est: 2001)

Chl A



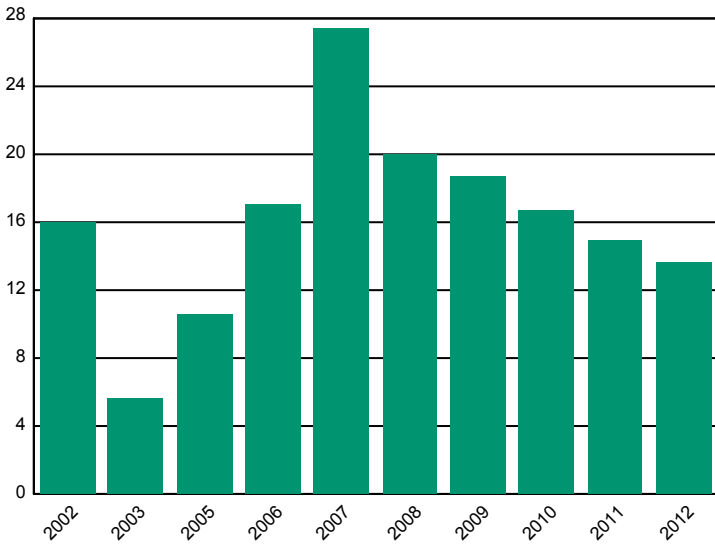
Average Total Nitrogen

Average Total Phosphorus



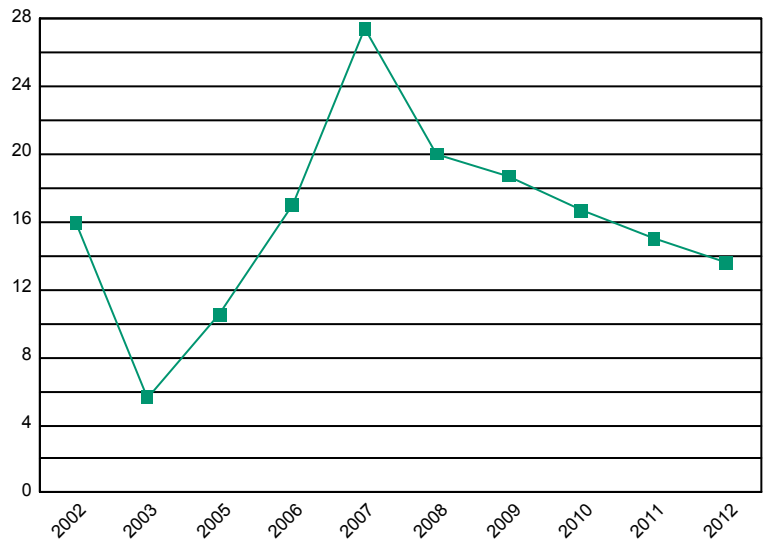
WEIC-12	Samples/Year	Chl a Nutrient: N/A						Years Sampled: 1991 - 2012	
	N	Chl A	Tot N	TKN	NO3+NO2-N	NH3-N	DRP	Tot P	
2002	13	15.93	0.893	0.601	0.301	0.02	0.054	0.142	
2003	13	5.64	0.780	0.341	0.435	0.02	0.041	0.099	
2005	7	10.53	0.684	0.263	0.420	0.02	0.052	0.116	
2006	7	17.00	1.070	0.703	0.367	0.03	0.051	0.087	
2007	7	27.38	0.978	0.608	0.369	0.02	0.075	0.109	
2008	7	19.98	0.925	0.535	0.390	0.03	0.054	0.113	
2009	7	18.69	0.865	0.503	0.361	0.02	0.037	0.109	
2010	7	16.65	0.774	0.403	0.371	0.02	0.042	0.081	
2011	7	14.98	0.840	0.487	0.353	0.01	0.028	0.071	
2012	7	13.58	0.683	0.429	0.255	0.01	0.025	0.067	
		16.16	0.77	0.42	0.36	0.02	0.046	0.122	

Average Chl a



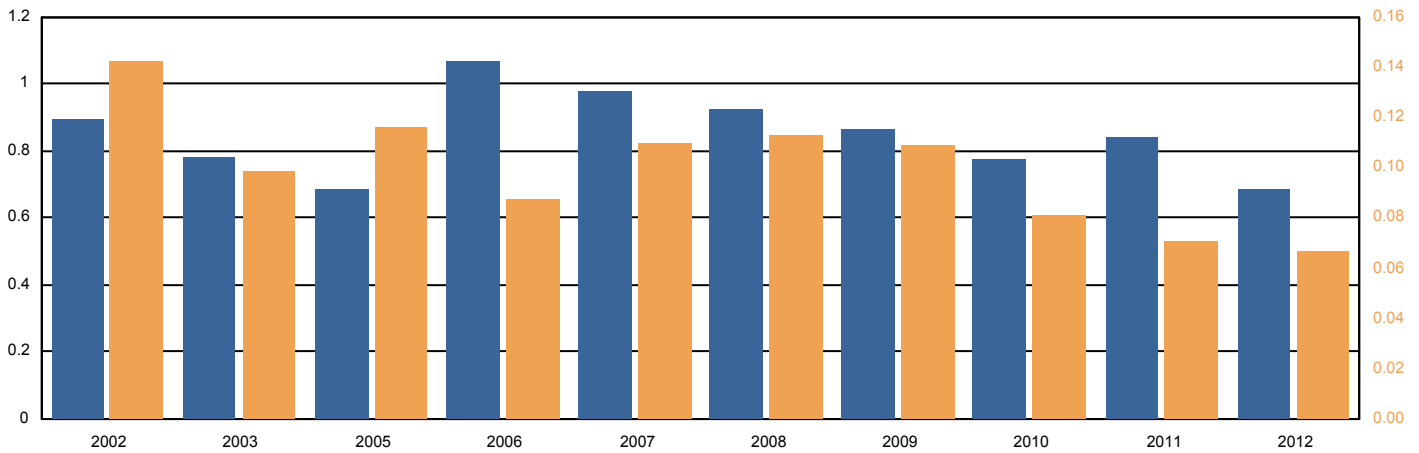
Chl A Nutrient: N/A

Chl A



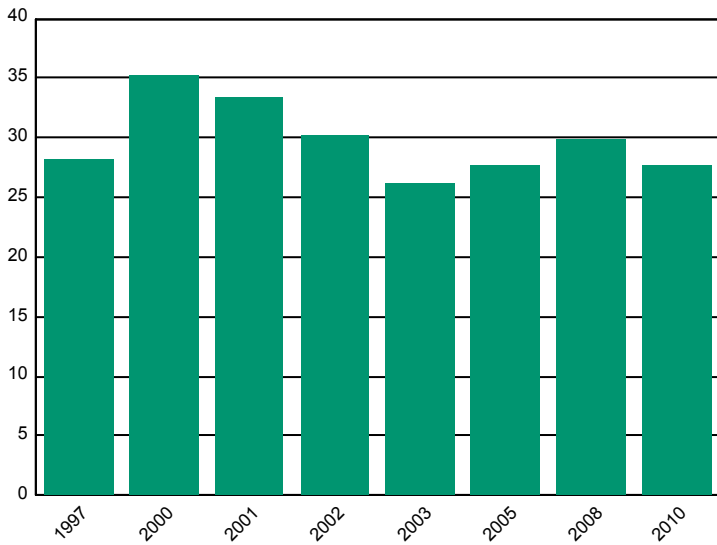
Average Total Nitrogen

Average Total Phosphorus



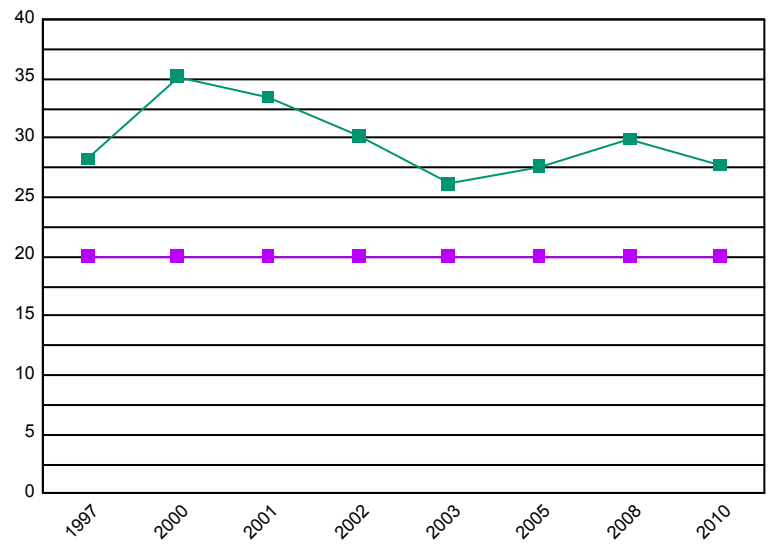
WEIC-2	Samples/Year	Chl a Nutrient: 2001					Years Sampled: 1992 - 2010		
		N	Chl A	Tot N	TKN	NO3+NO2-N	NH3-N	DRP	Tot P
1997	7	28.23	0.475	0.335	0.140	0.01	0.015	0.095	
2000	7	35.17	0.764	0.710	0.054	0.05	0.011	0.091	
2001	7	33.41	0.358	0.289	0.069	0.06	0.006	0.093	
2002	7	30.18	0.890	0.767	0.123	0.05	0.030	0.096	
2003	7	26.13	0.392	0.247	0.146	0.02	0.013	0.080	
2005	7	27.62	0.561	0.433	0.128	0.02	0.016	0.060	
2008	7	29.90	0.668	0.662	0.006	0.01	0.012	0.083	
2010	7	27.70	0.697	0.663	0.034	0.01	0.007	0.063	
		29.27	0.60	0.52	0.08	0.03	0.016	0.085	

Average Chl a



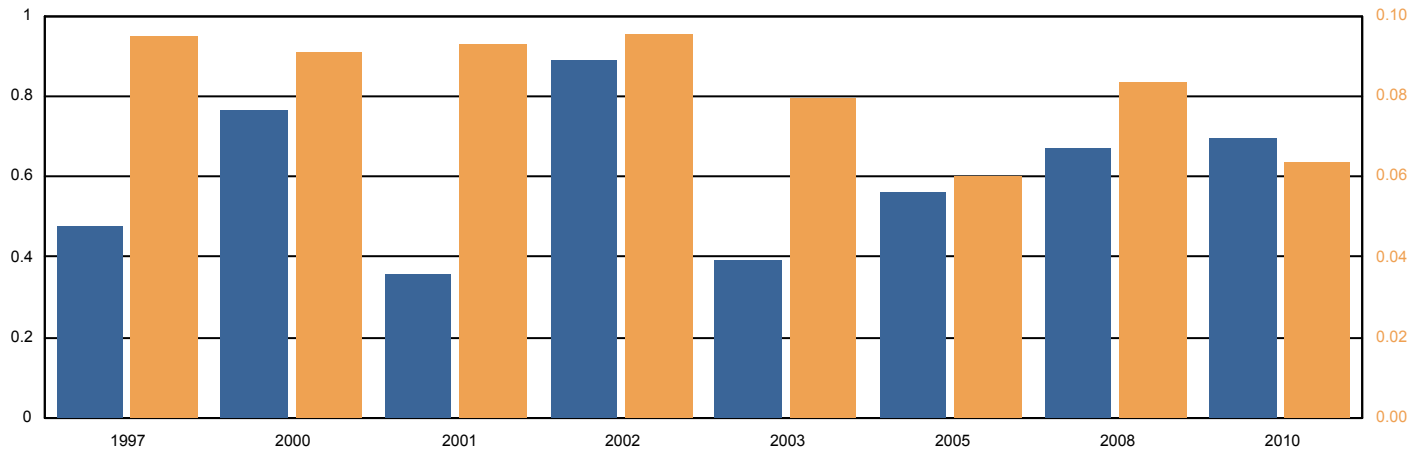
Chl A Nutrient: 20 (Est: 2001)

Chl A



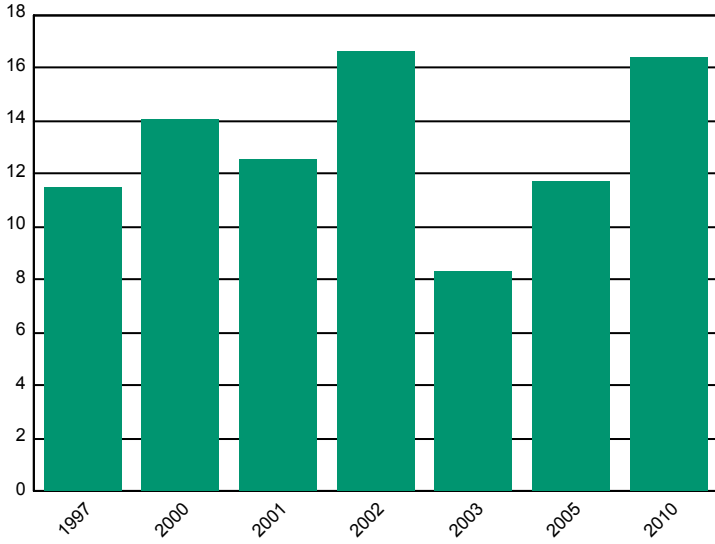
Average Total Nitrogen

Average Total Phosphorus



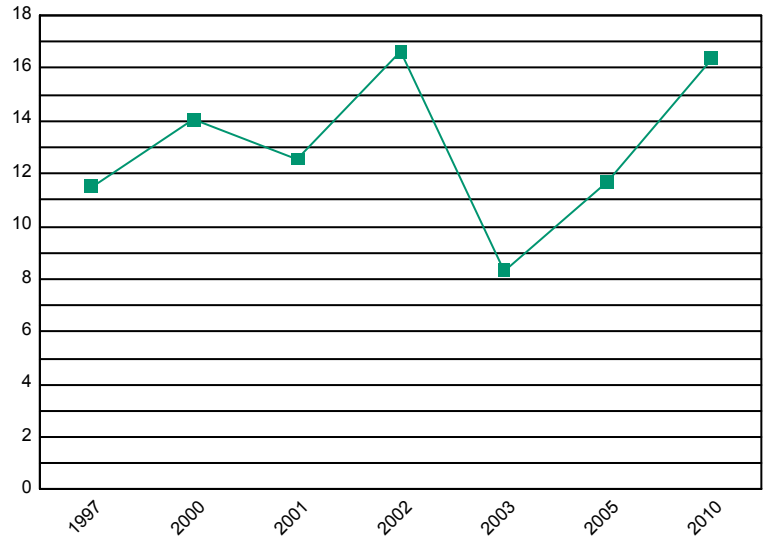
WEIC-3	Samples/Year	Chl a Nutrient: N/A						Years Sampled: 1993 - 2010	
		N	Chl A	Tot N	TKN	NO3+NO2-N	NH3-N	DRP	Tot P
1997	7	11.51	0.555	0.251	0.304	0.01	0.059	0.110	
2000	7	14.04	0.869	0.548	0.321	0.04	0.043	0.101	
2001	7	12.56	0.475	0.169	0.306	0.04	0.044	0.094	
2002	7	16.63	1.008	0.714	0.293	0.05	0.045	0.108	
2003	7	8.34	0.586	0.195	0.391	0.02	0.029	0.085	
2005	7	11.69	0.794	0.323	0.471	0.02	0.024	0.071	
2010	7	16.38	0.787	0.499	0.288	0.02	0.029	0.073	
		13.39	0.72	0.40	0.33	0.03	0.049	0.111	

Average Chl a



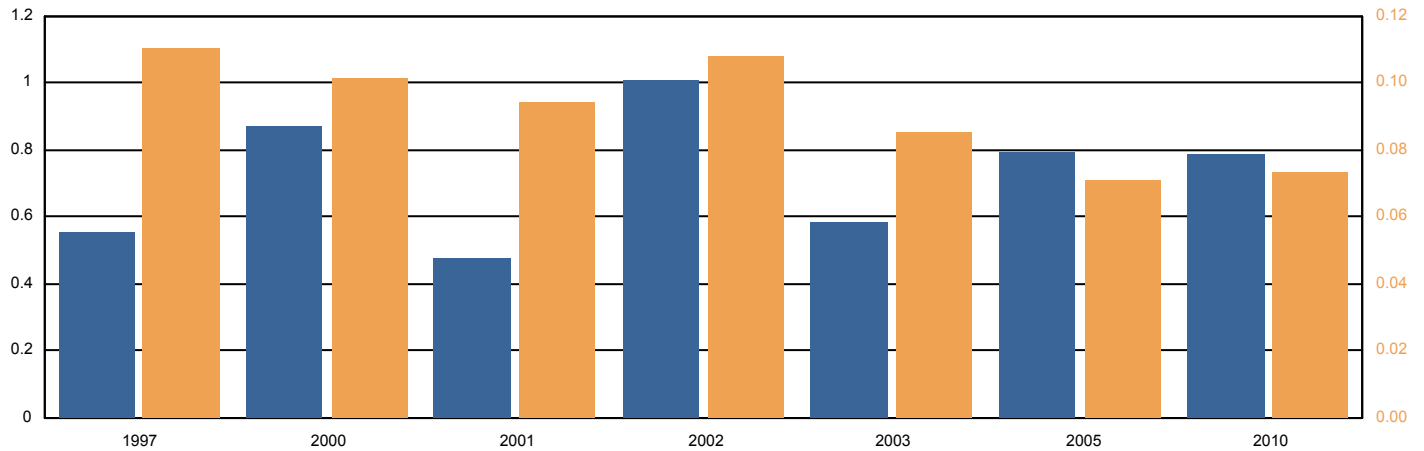
Chl A Nutrient: N/A

Chl A



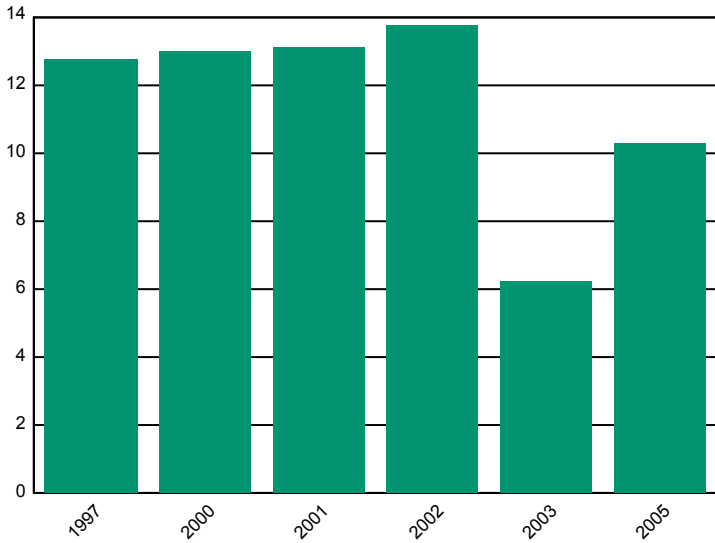
Average Total Nitrogen

Average Total Phosphorus



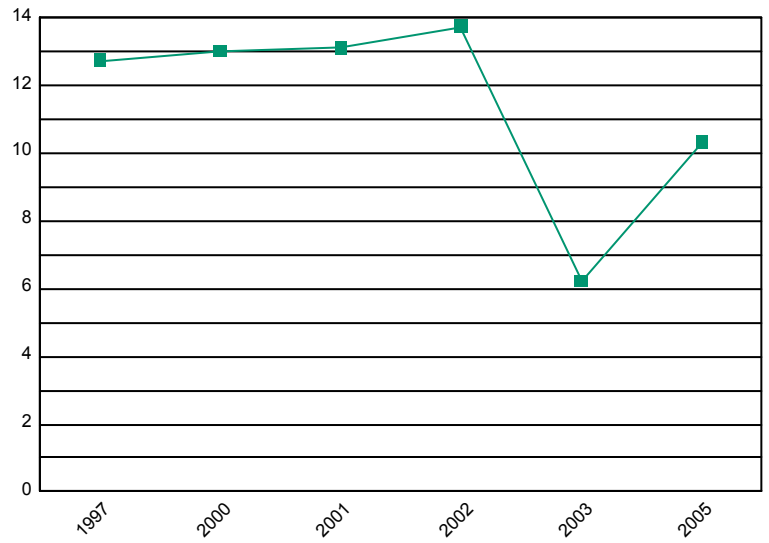
WEIC-4	Samples/Year	Chl a Nutrient: N/A						Years Sampled: 1993 - 2007	
		N	Chl A	Tot N	TKN	NO3+NO2-N	NH3-N	DRP	Tot P
1997	7	12.73	0.587	0.229	0.359	0.01	0.076	0.110	
2000	7	12.99	0.629	0.298	0.331	0.04	0.059	0.117	
2001	7	13.10	0.462	0.130	0.332	0.06	0.051	0.099	
2002	7	13.74	0.766	0.449	0.317	0.05	0.051	0.107	
2003	7	6.22	0.882	0.455	0.427	0.01	0.043	0.077	
2005	7	10.30	0.703	0.347	0.355	0.02	0.034	0.070	
		12.49	0.67	0.32	0.35	0.03	0.067	0.104	

Average Chl a



Chl A Nutrient: N/A

Chl A



Average Total Nitrogen

Average Total Phosphorus

