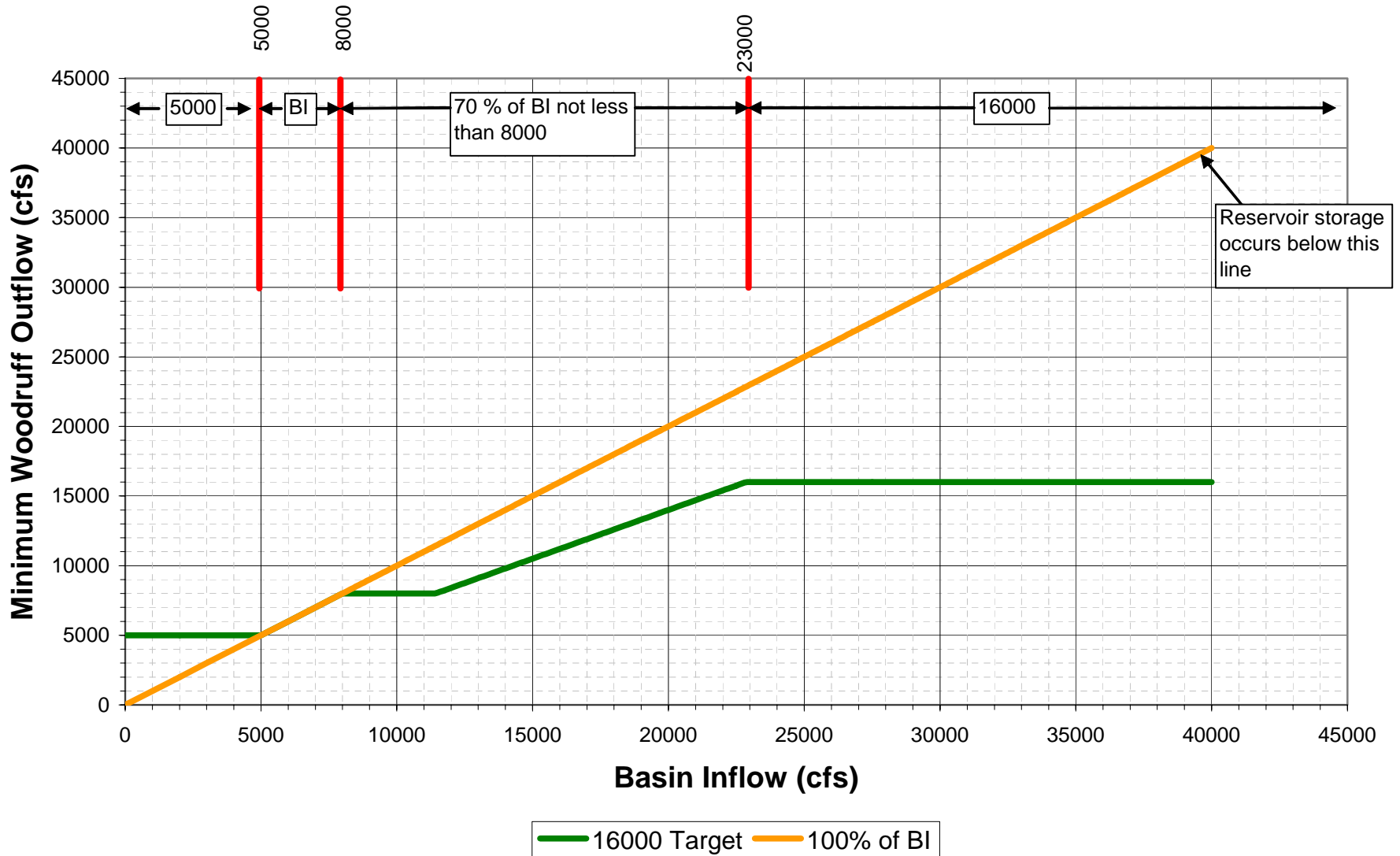
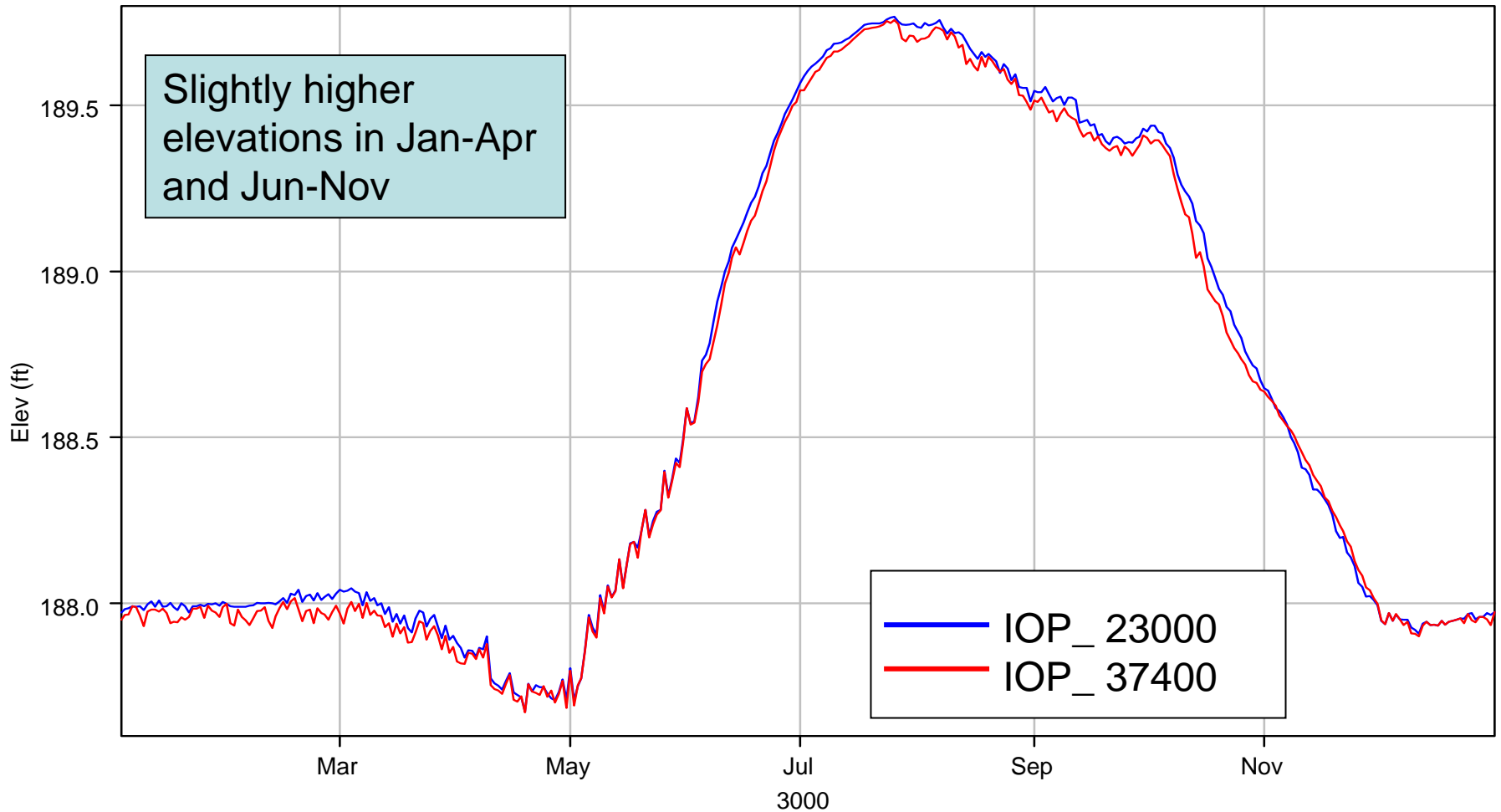


Jim Woodruff Outflow Based on Basin Inflow

IOP June- Feb; Non-Spawning Period



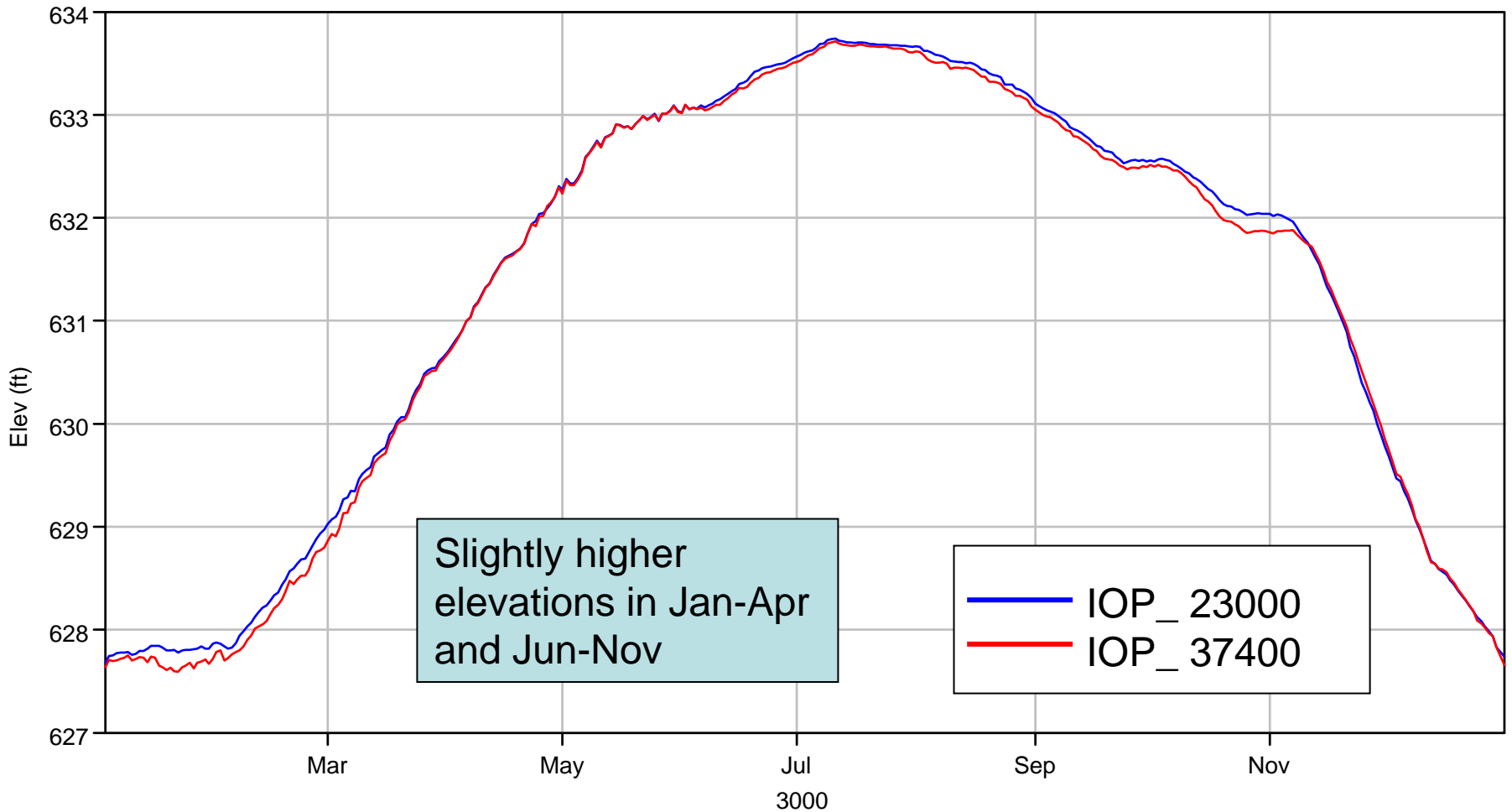
WF George average elevation (1939-2001)



— W.F. GEORGE IOP23K_70_2K[02JAN1939-01JAN2002] ELEV-AVER

— W.F. GEORGE IOP_70_2K[02JAN1939-01JAN2002] ELEV-AVER

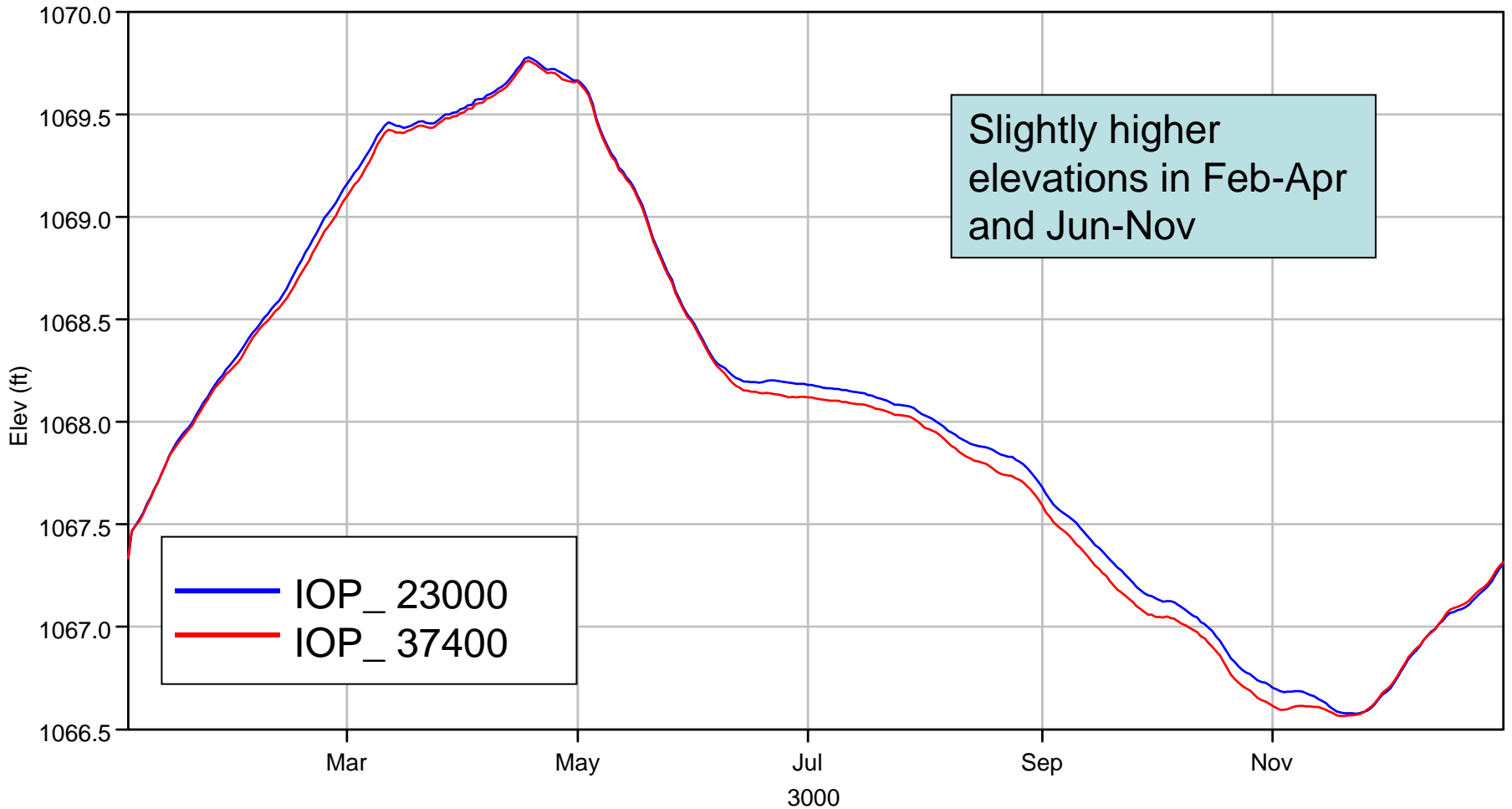
West Point average elevation (1939-2001)



Slightly higher elevations in Jan-Apr and Jun-Nov

IOP_ 23000
IOP_ 37400

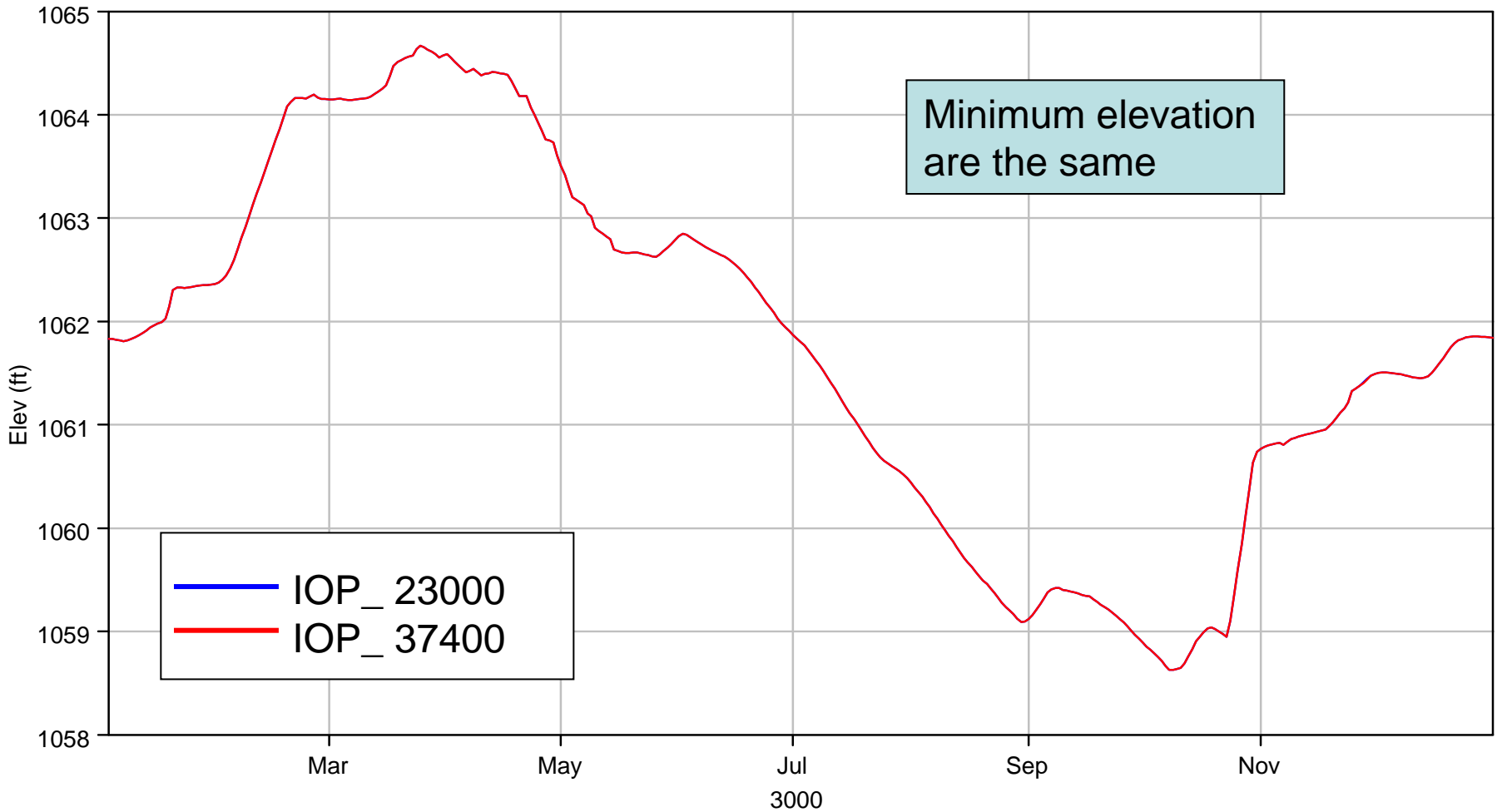
Lanier average elevation (1939-2001)



— BUFORD DAM IOP23K_70_2K[02JAN1939-01JAN2002] ELEV-AVER

— BUFORD DAM IOP_70_2K[02JAN1939-01JAN2002] ELEV-AVER

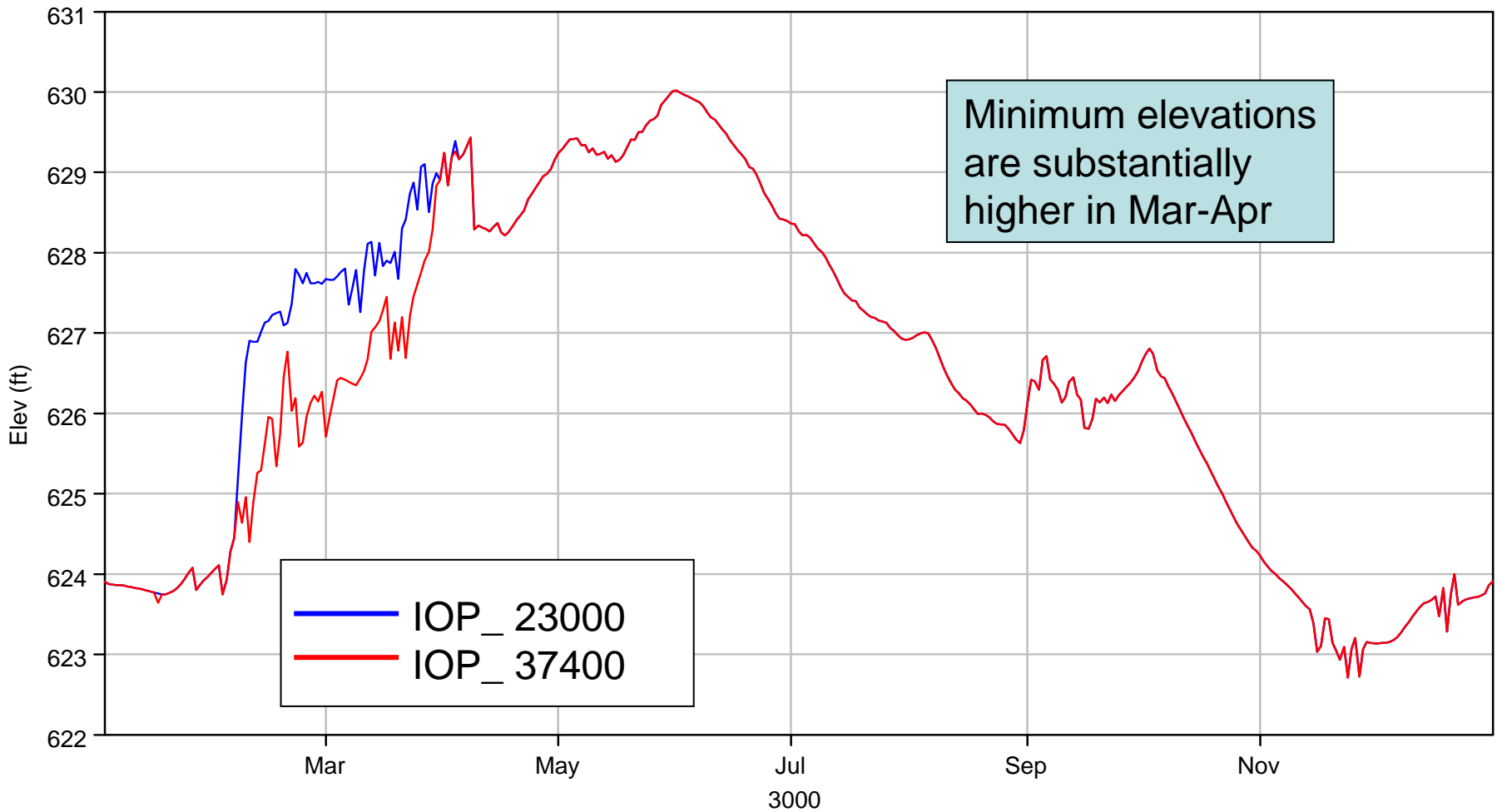
Buford minimum elevation (1939-2001)



— BUFORD DAM IOP23K_70_2K[02JAN1939-01JAN2002] ELEV-MIN

— BUFORD DAM IOP_70_2K[02JAN1939-01JAN2002] ELEV-MIN

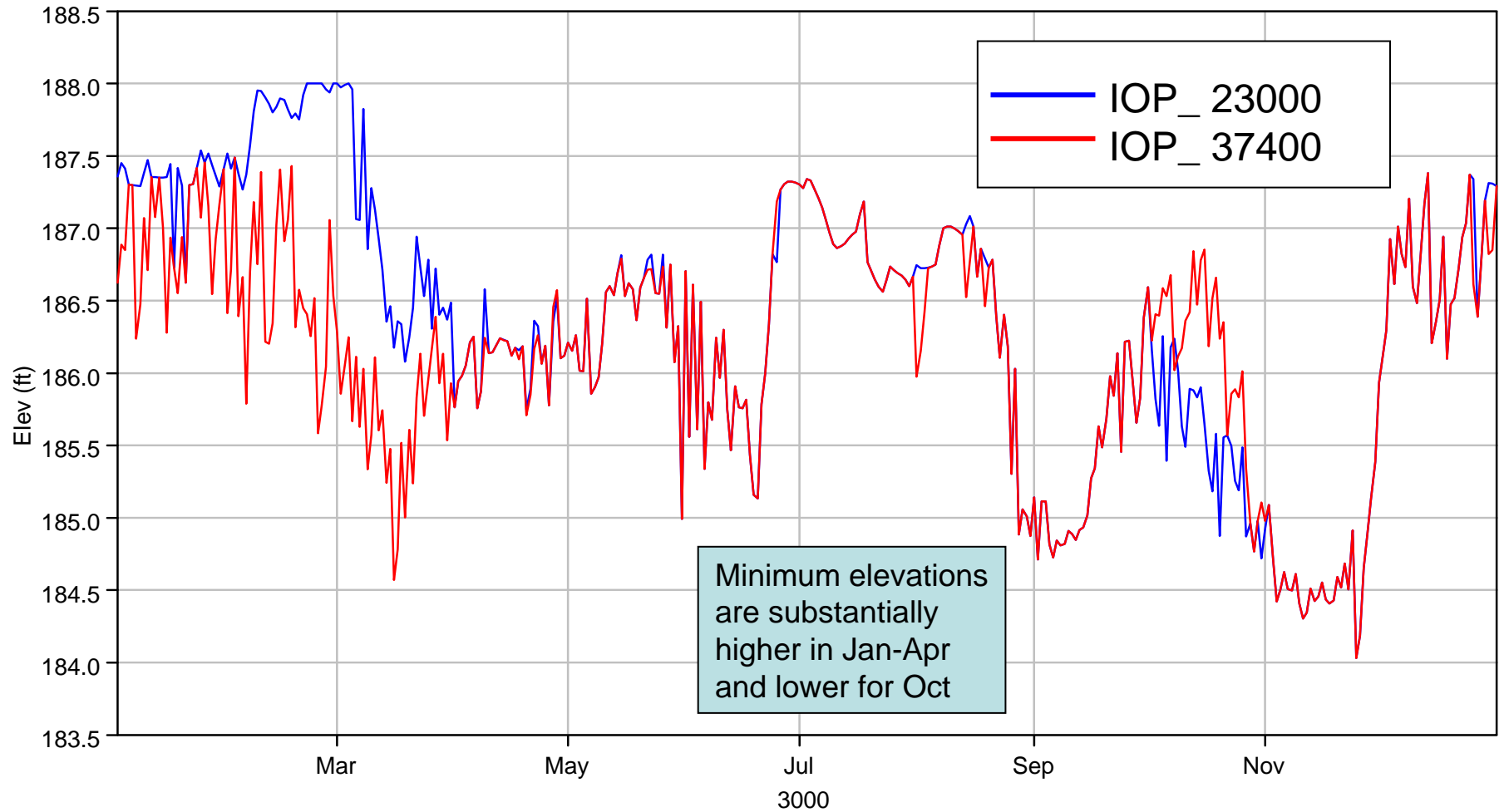
West Point minimum elevation (1939-2001)



WEST POINT IOP23K_70_2K[02JAN1939-01JAN2002] ELEV-MIN

WEST POINT IOP_70_2K[02JAN1939-01JAN2002] ELEV-MIN

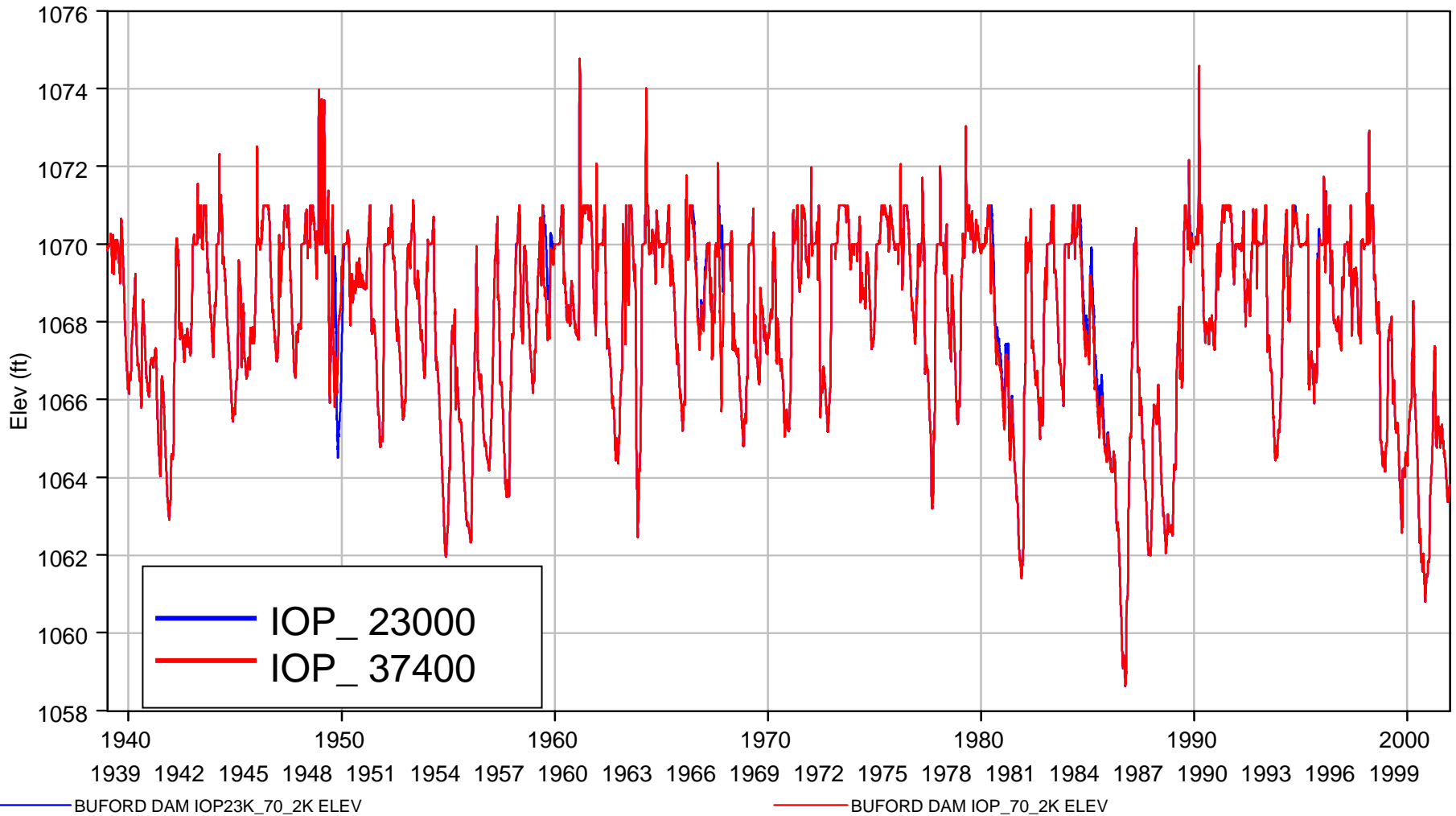
WF George minimum elevation (1939-2001)



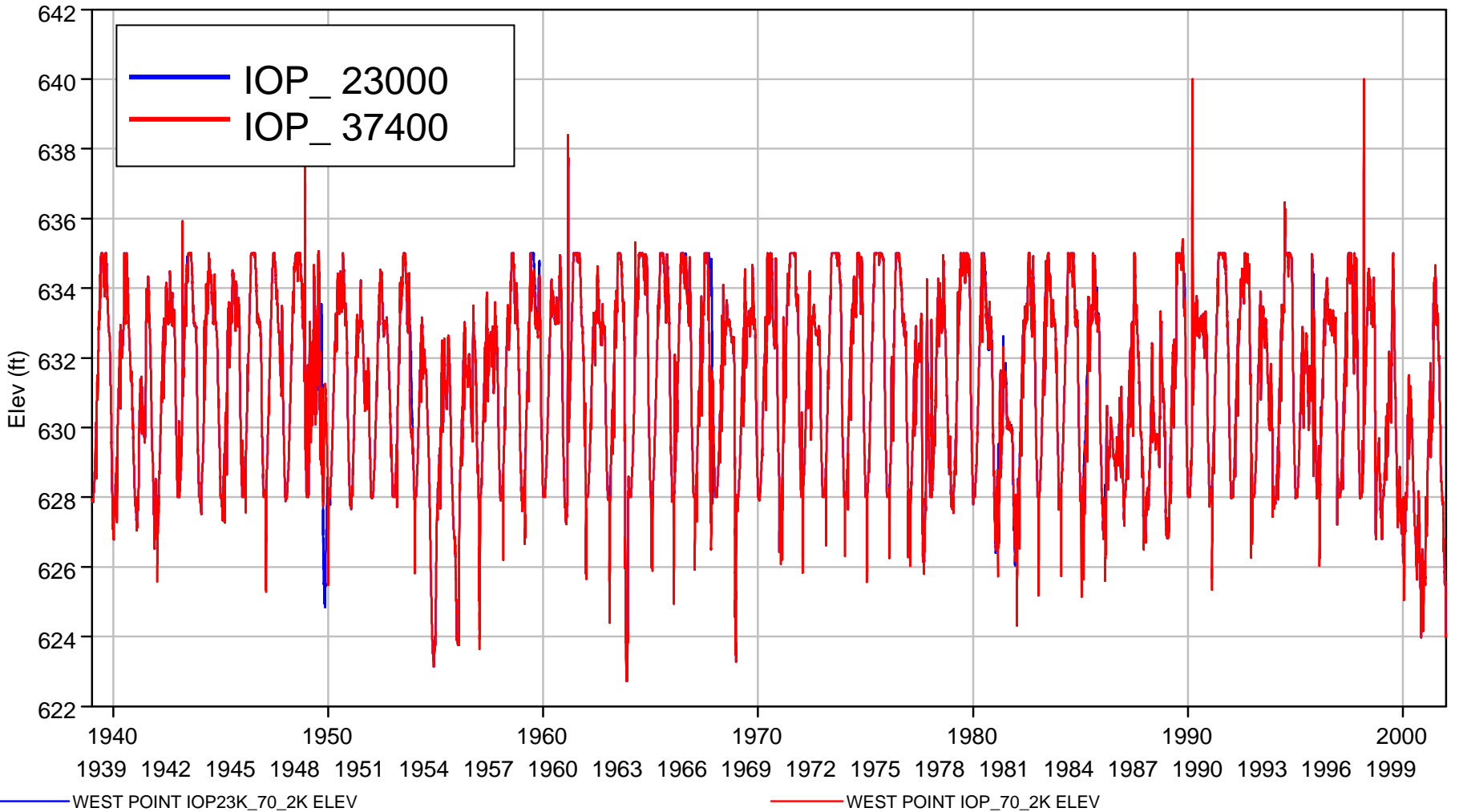
— W.F. GEORGE IOP23K_70_2K[02JAN1939-01JAN2002] ELEV-MIN

— W.F. GEORGE IOP_70_2K[02JAN1939-01JAN2002] ELEV-MIN

Buford 1939-2001



West Point 1939-2001



WF George 1939-2001

