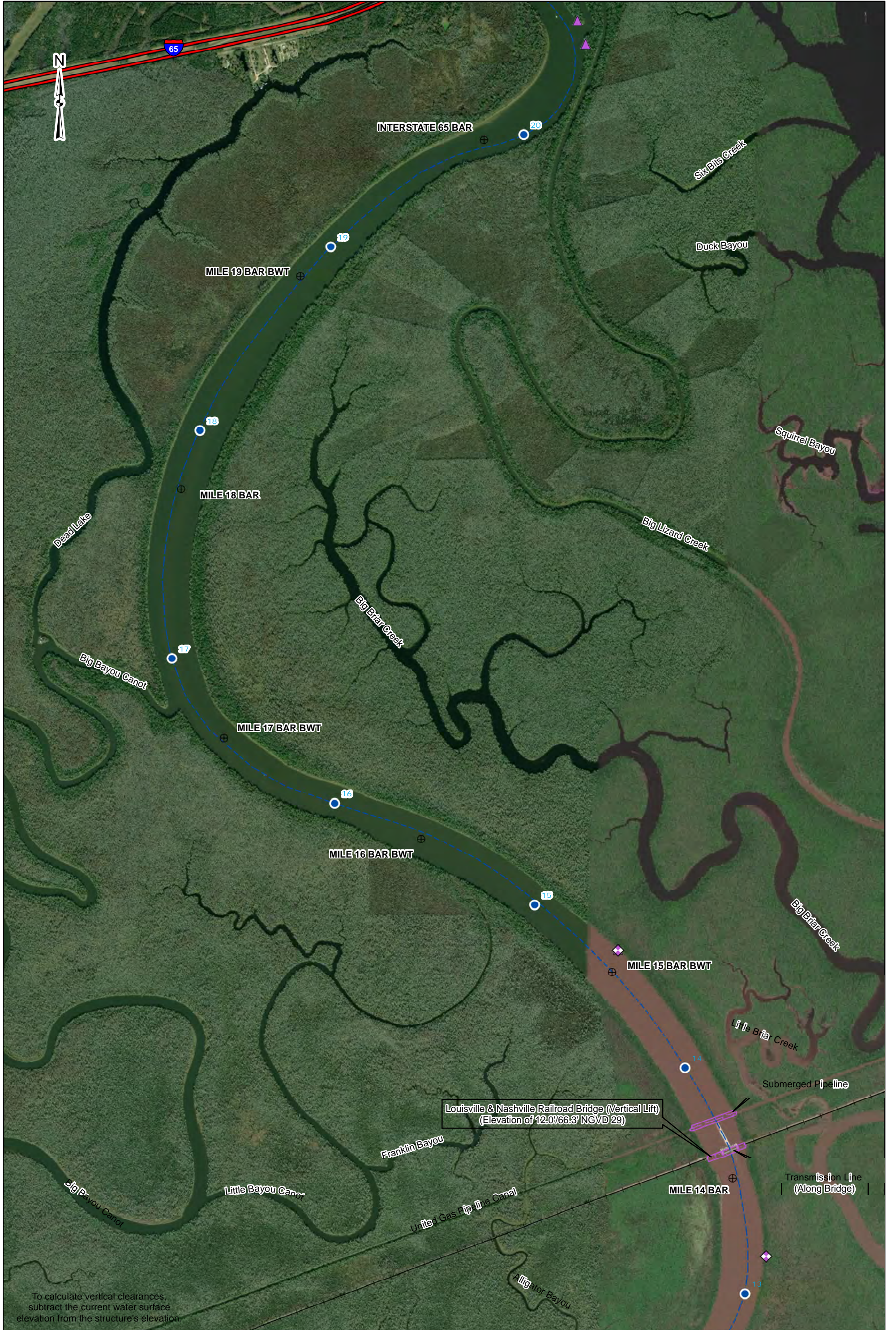




To calculate vertical clearances,
 subtract the current water surface
 elevation from the structure's elevation.

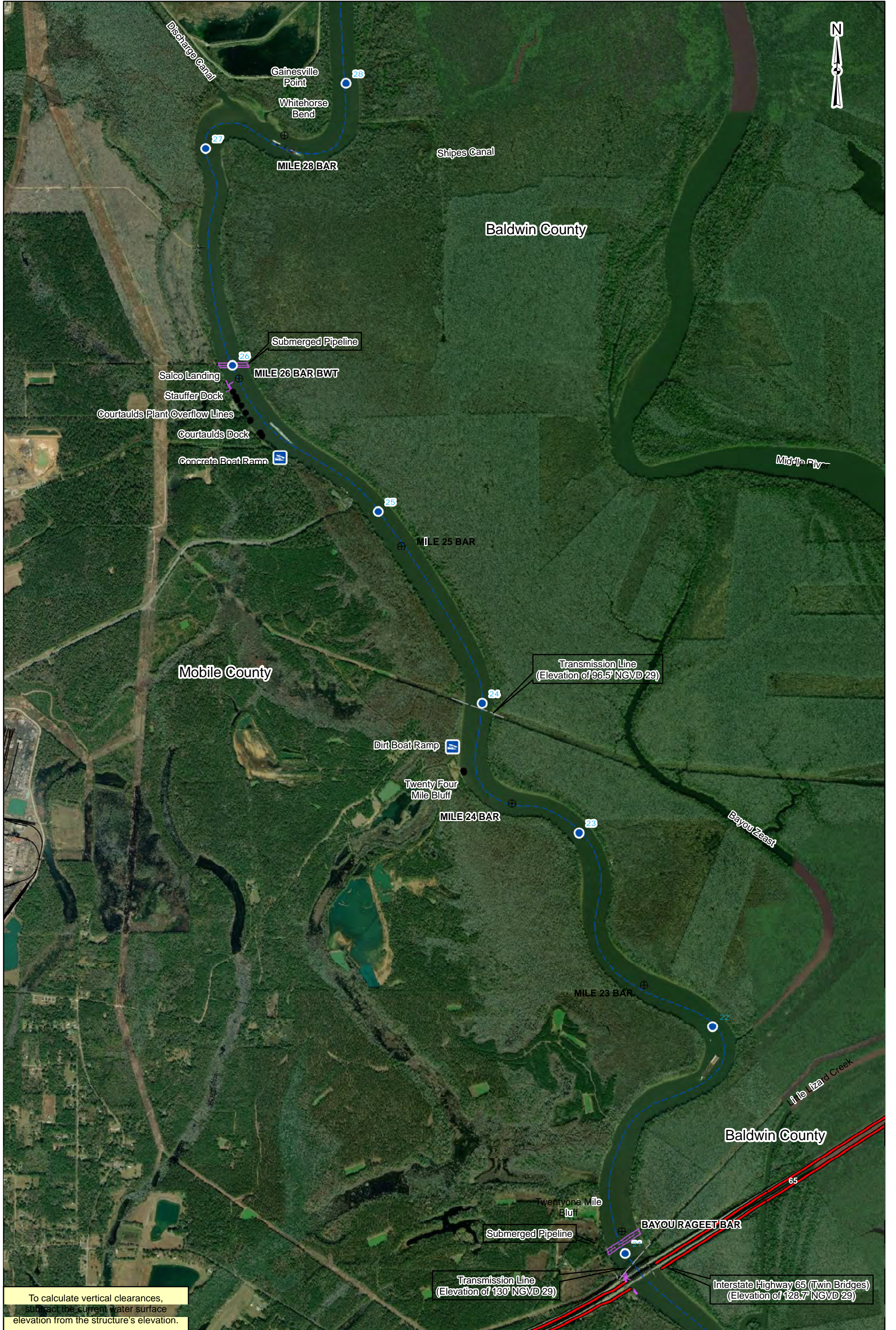


To calculate vertical clearances, subtract the current water surface elevation from the structure's elevation.



Louisville & Nashville Railroad Bridge (Vertical Lift)
 (Elevation of 12.0/66.3' NGVD 29)

To calculate vertical clearances,
 subtract the current water surface
 elevation from the structure's elevation.



To calculate vertical clearances, subtract the current water surface elevation from the structure's elevation.





To calculate vertical clearances,
 subtract the current water surface
 elevation from the structure's elevation.

