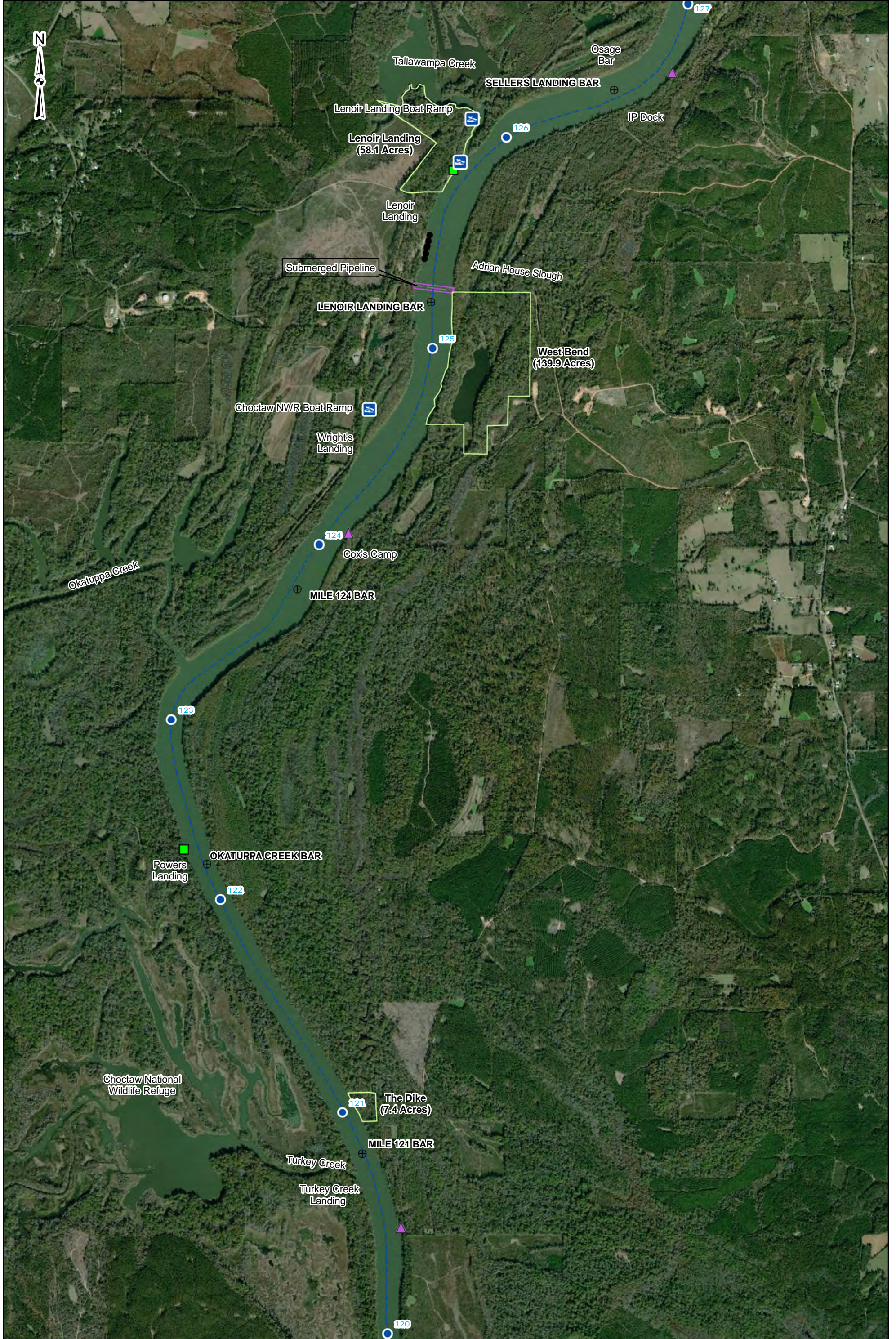
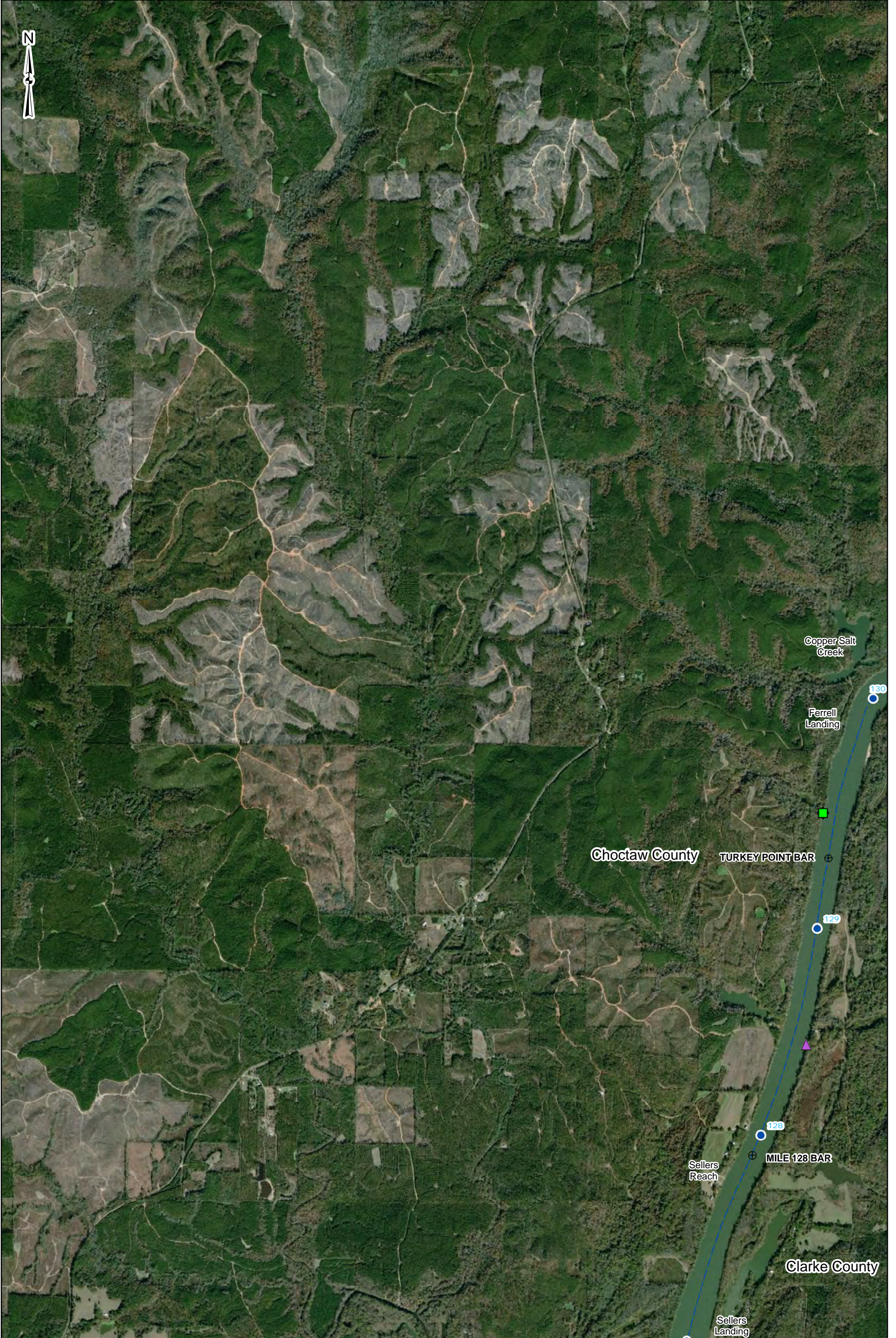
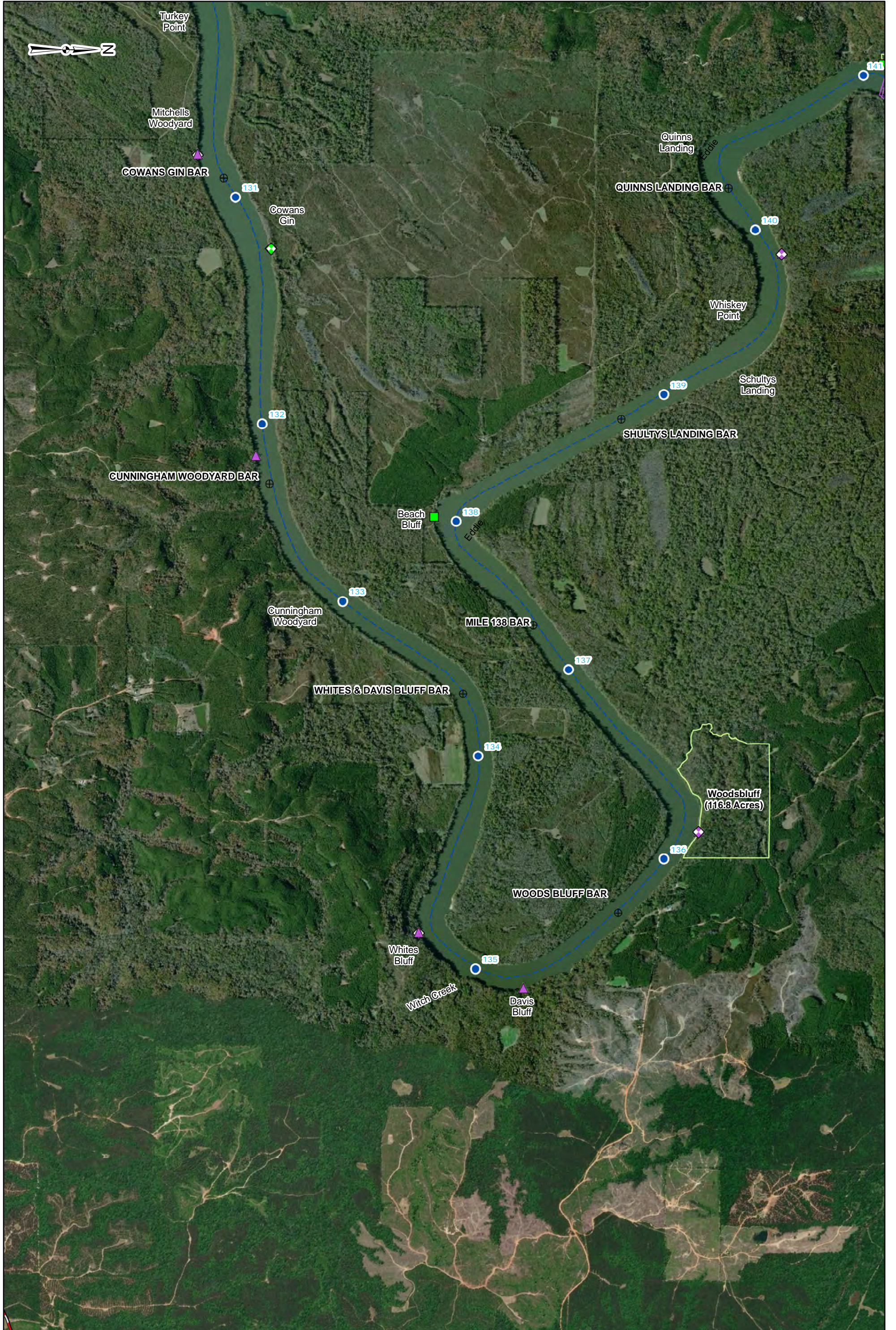
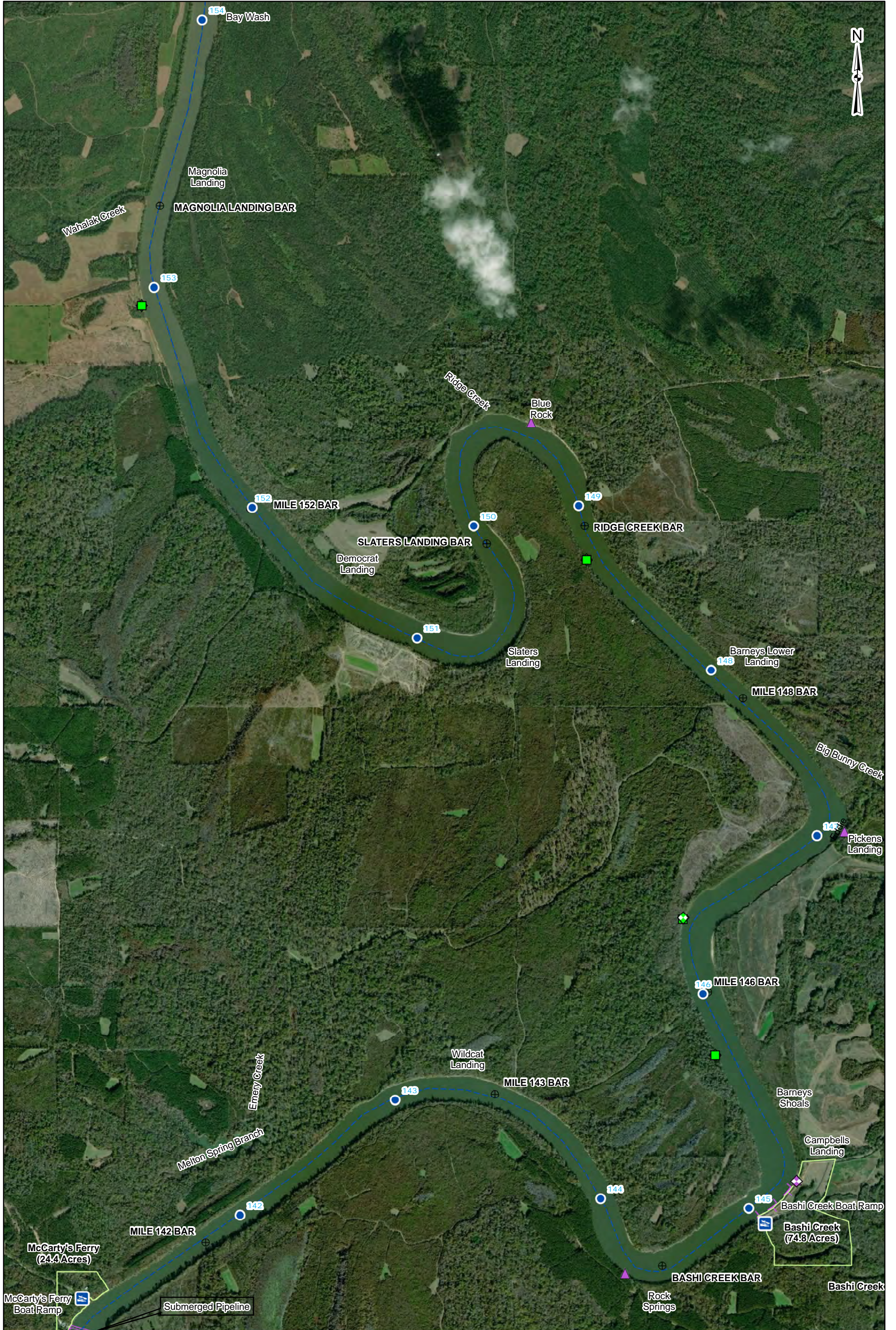


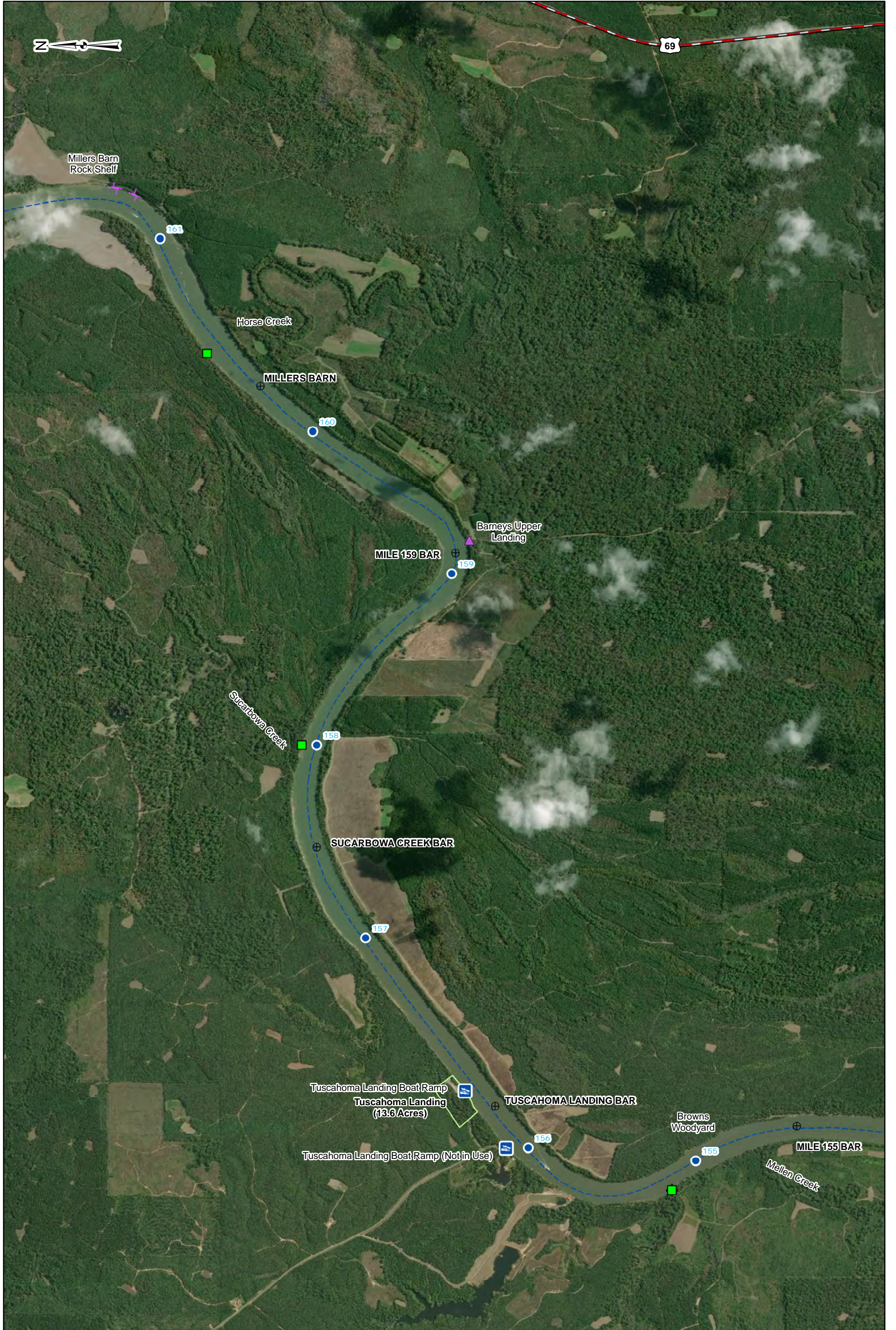
To calculate vertical clearances,  
 subtract the current water surface  
 elevation from the structure's elevation.

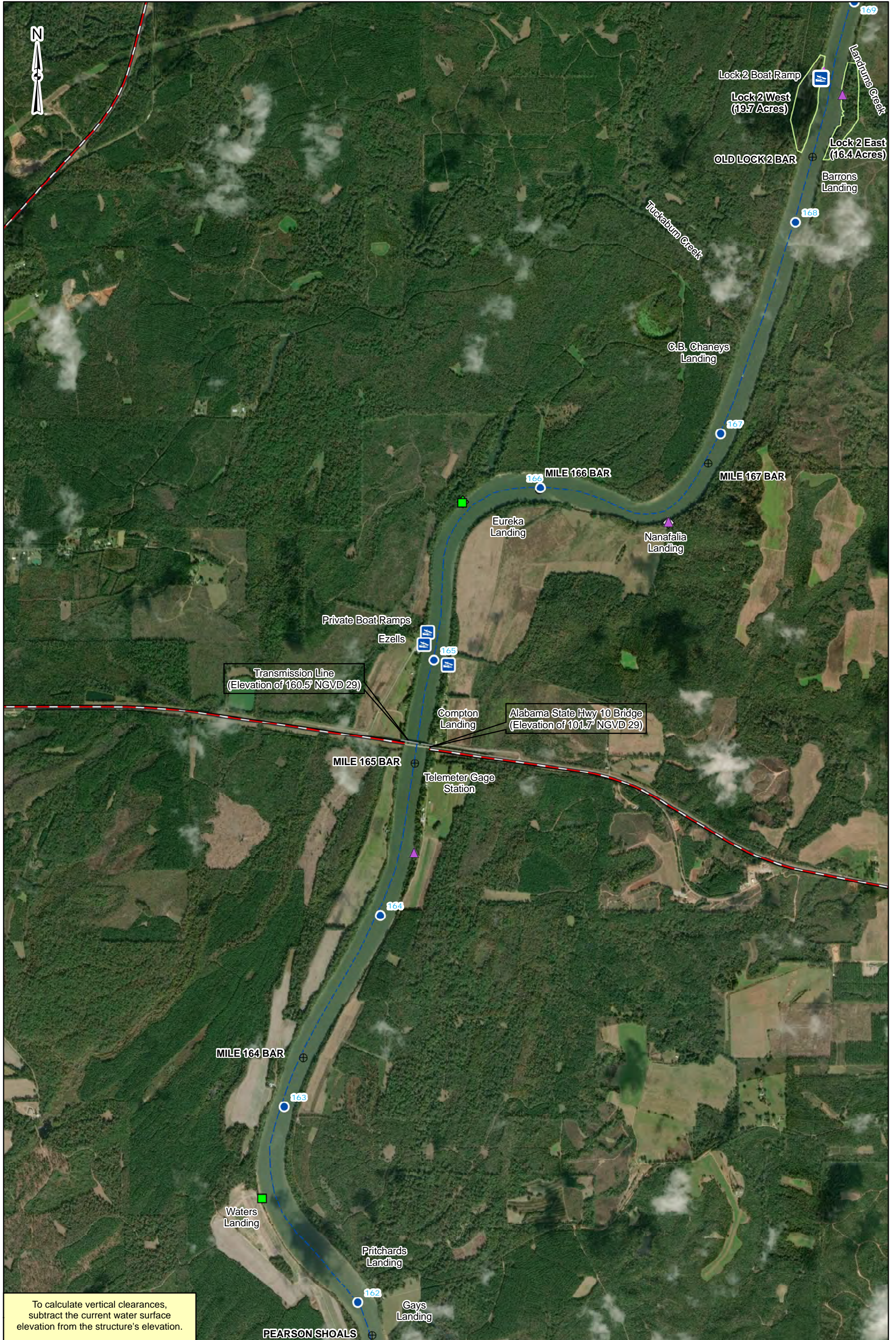


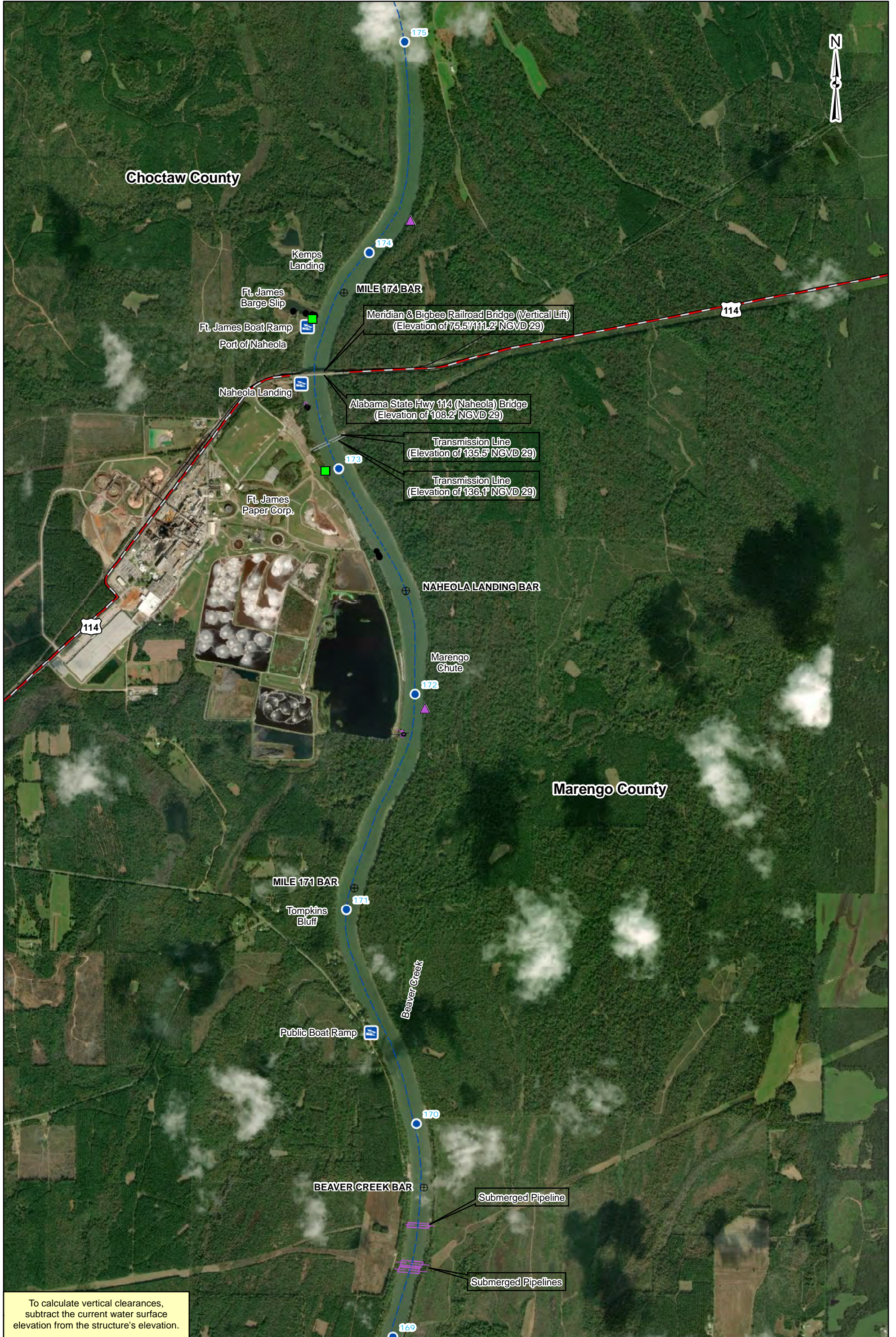






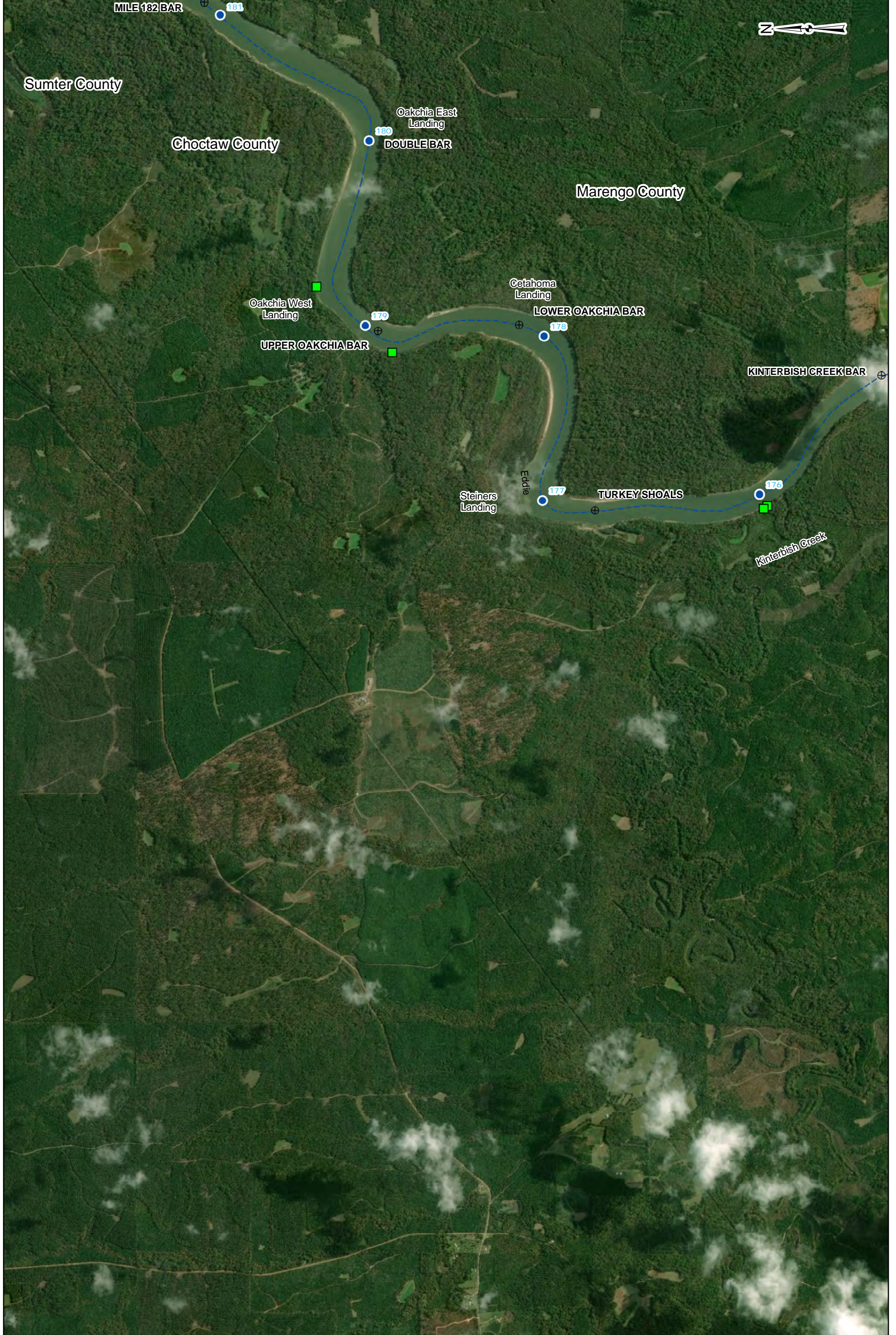


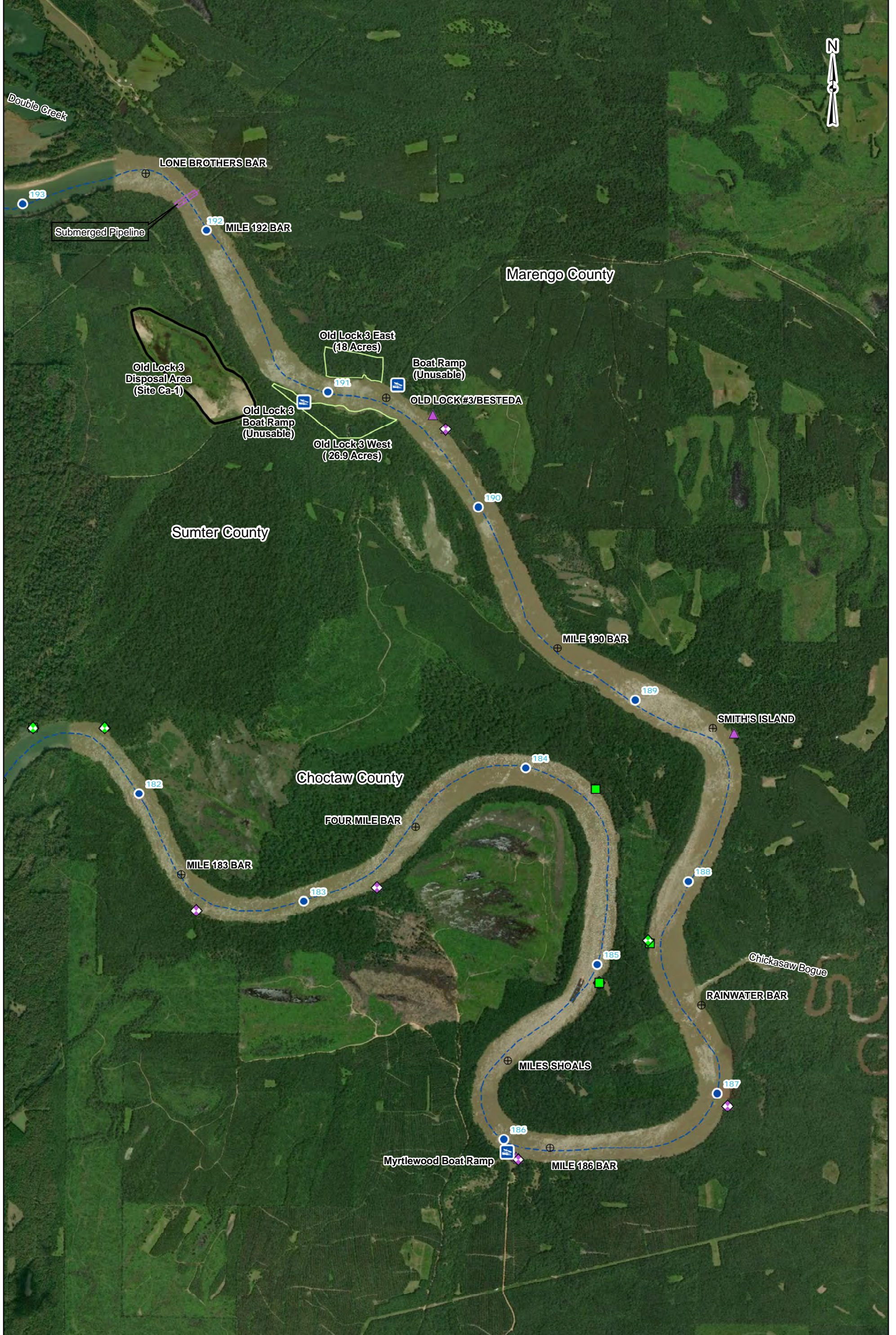




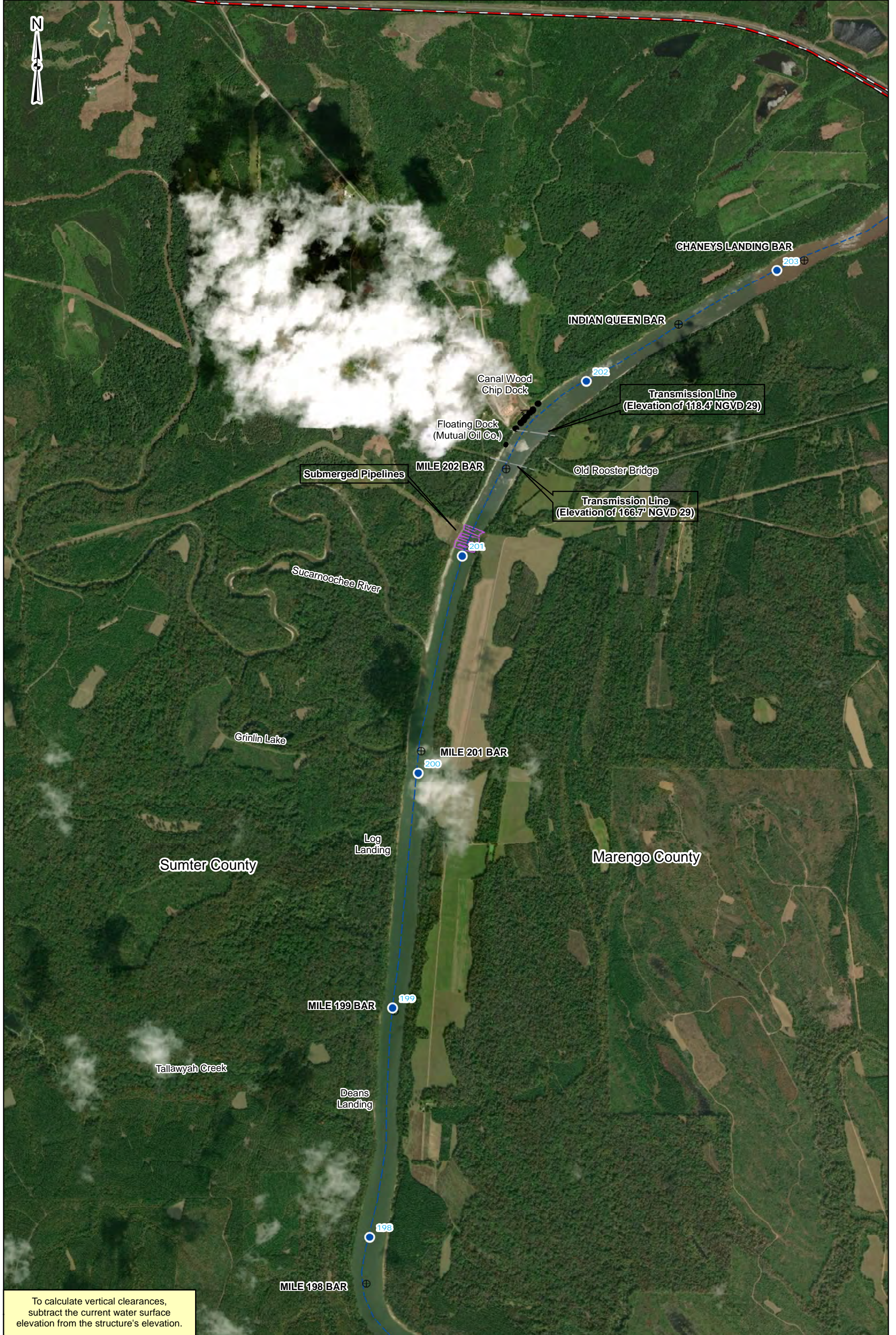
To calculate vertical clearances, subtract the current water surface elevation from the structure's elevation.











To calculate vertical clearances, subtract the current water surface elevation from the structure's elevation.



To calculate vertical clearances, subtract the current water surface elevation from the structure's elevation.

