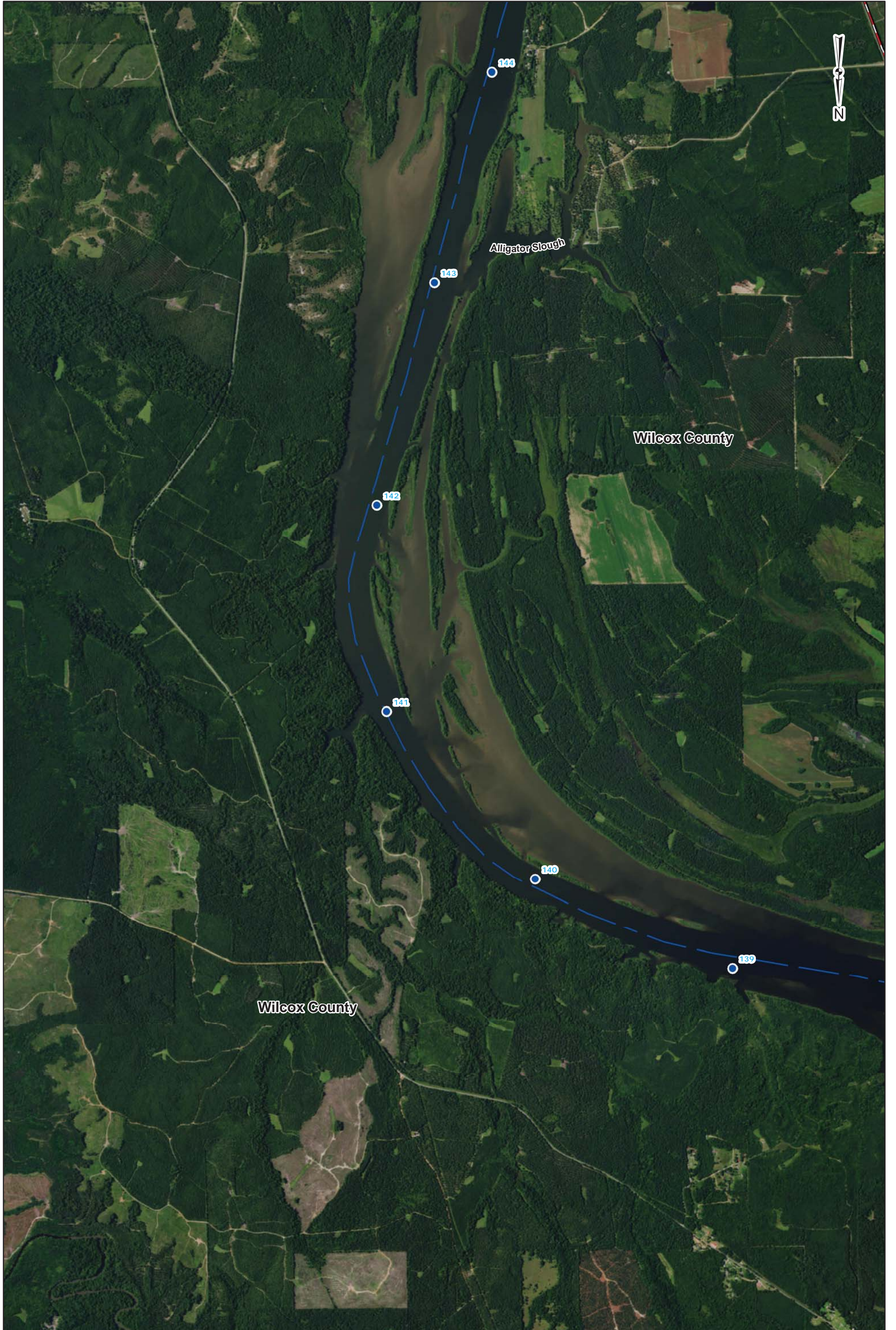
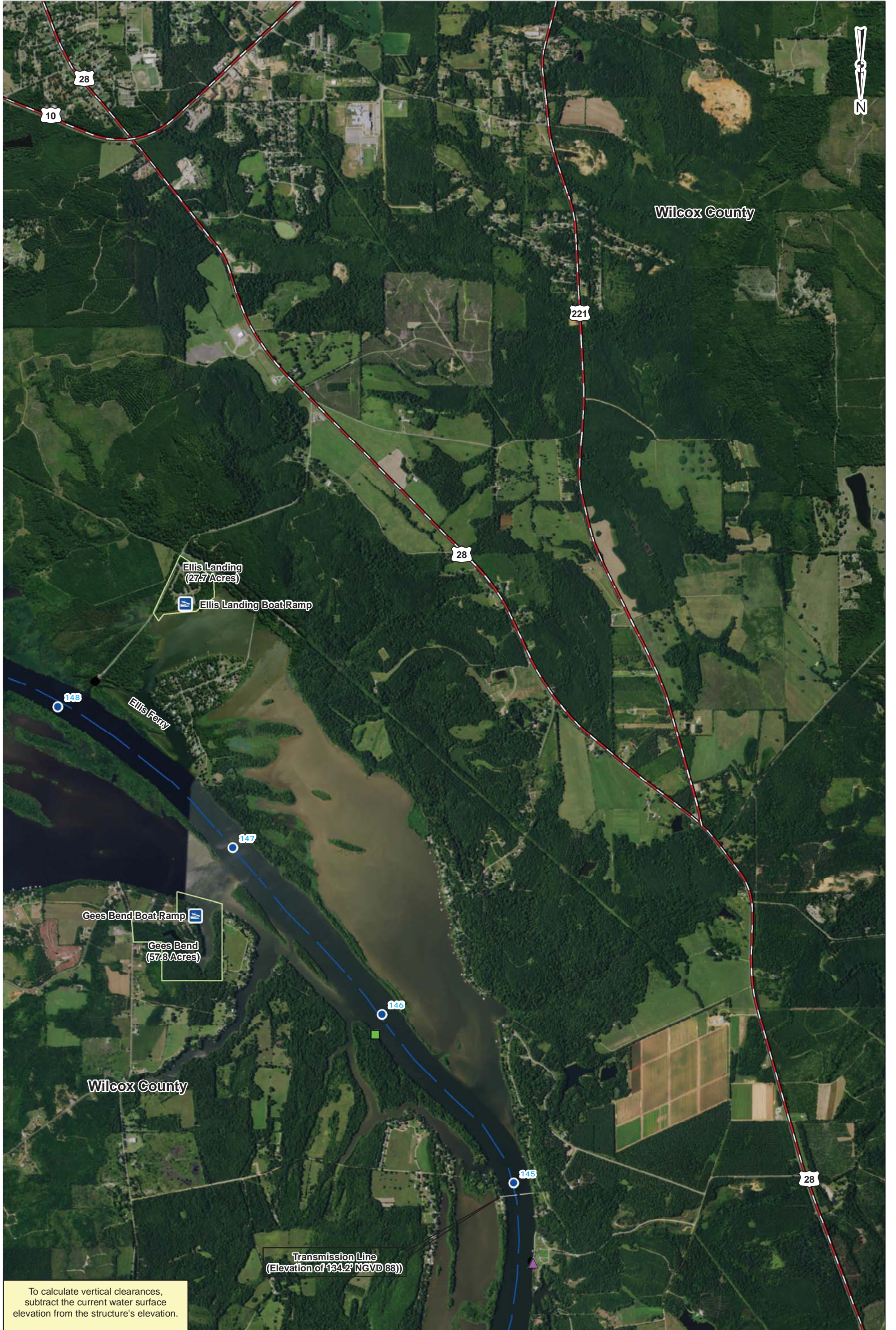
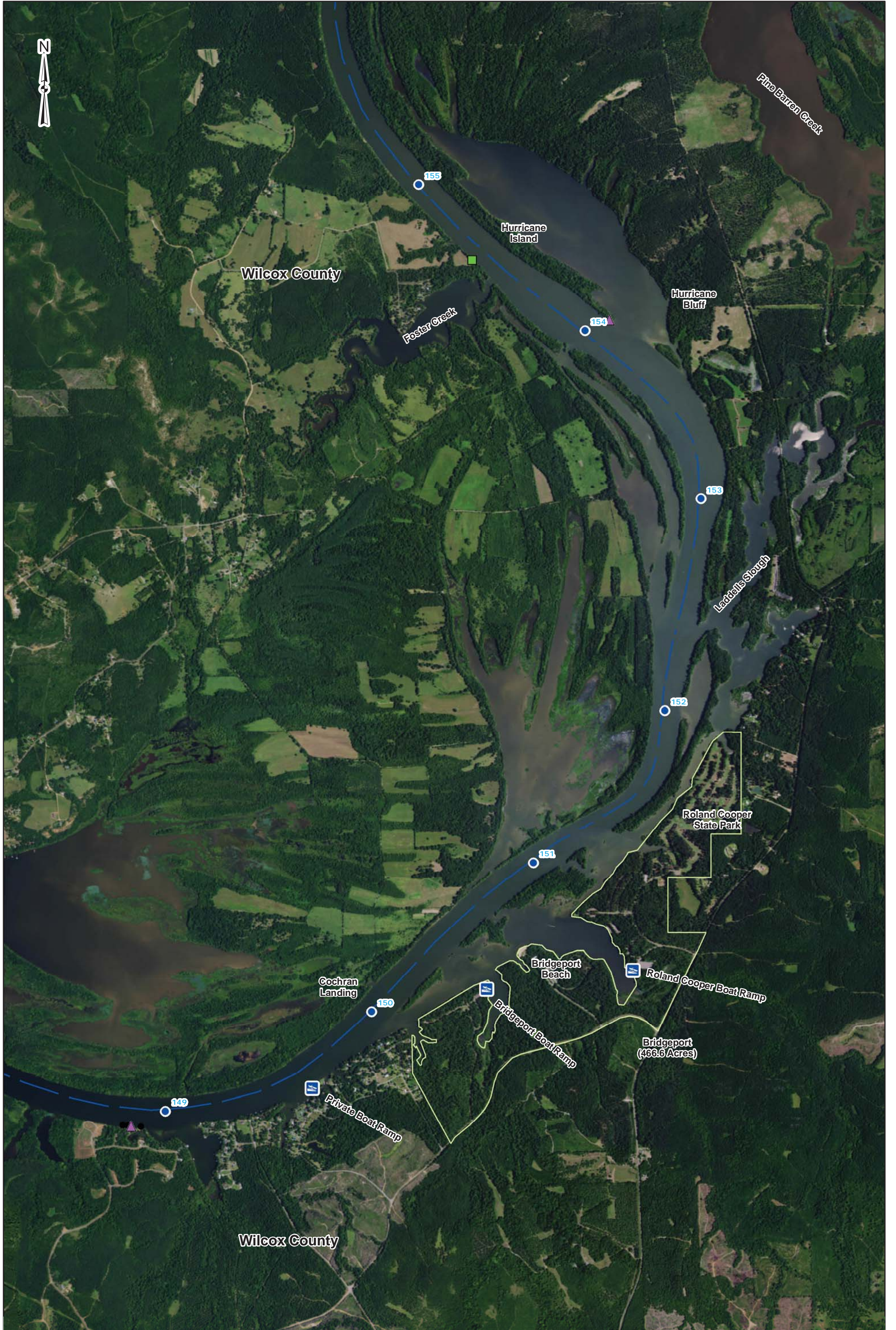


To calculate vertical clearances, subtract the current water surface elevation from the structure's elevation.



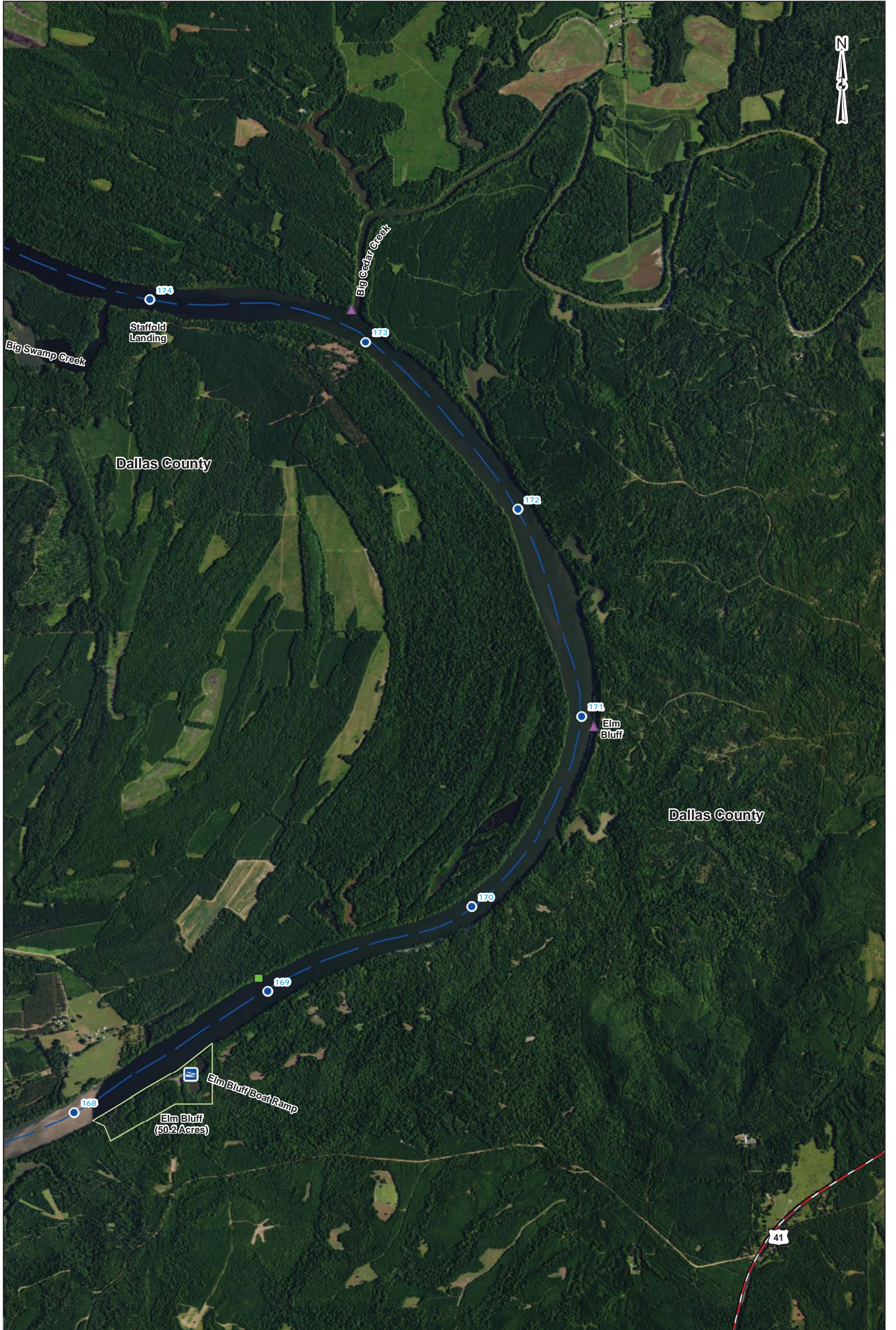


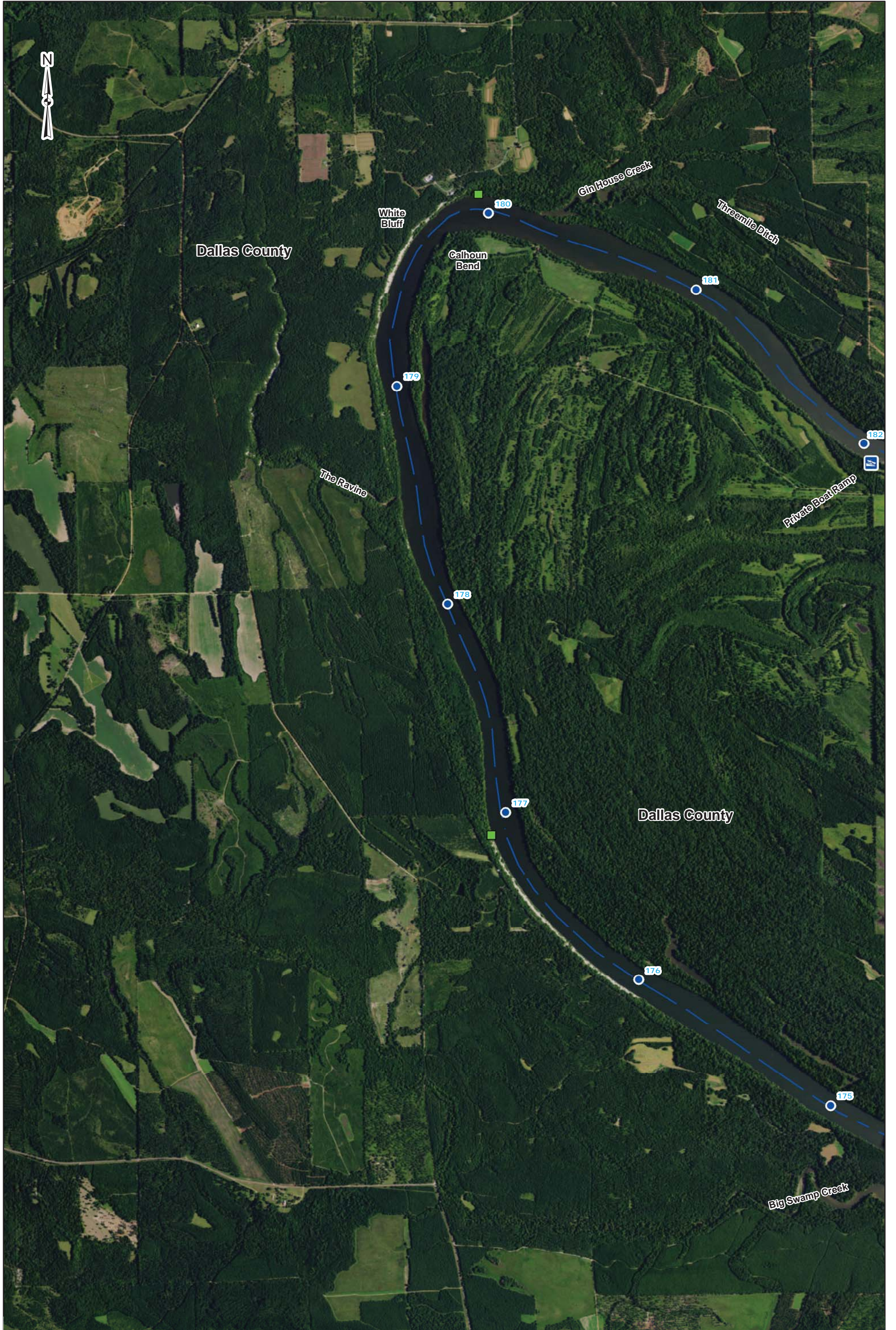
To calculate vertical clearances, subtract the current water surface elevation from the structure's elevation.

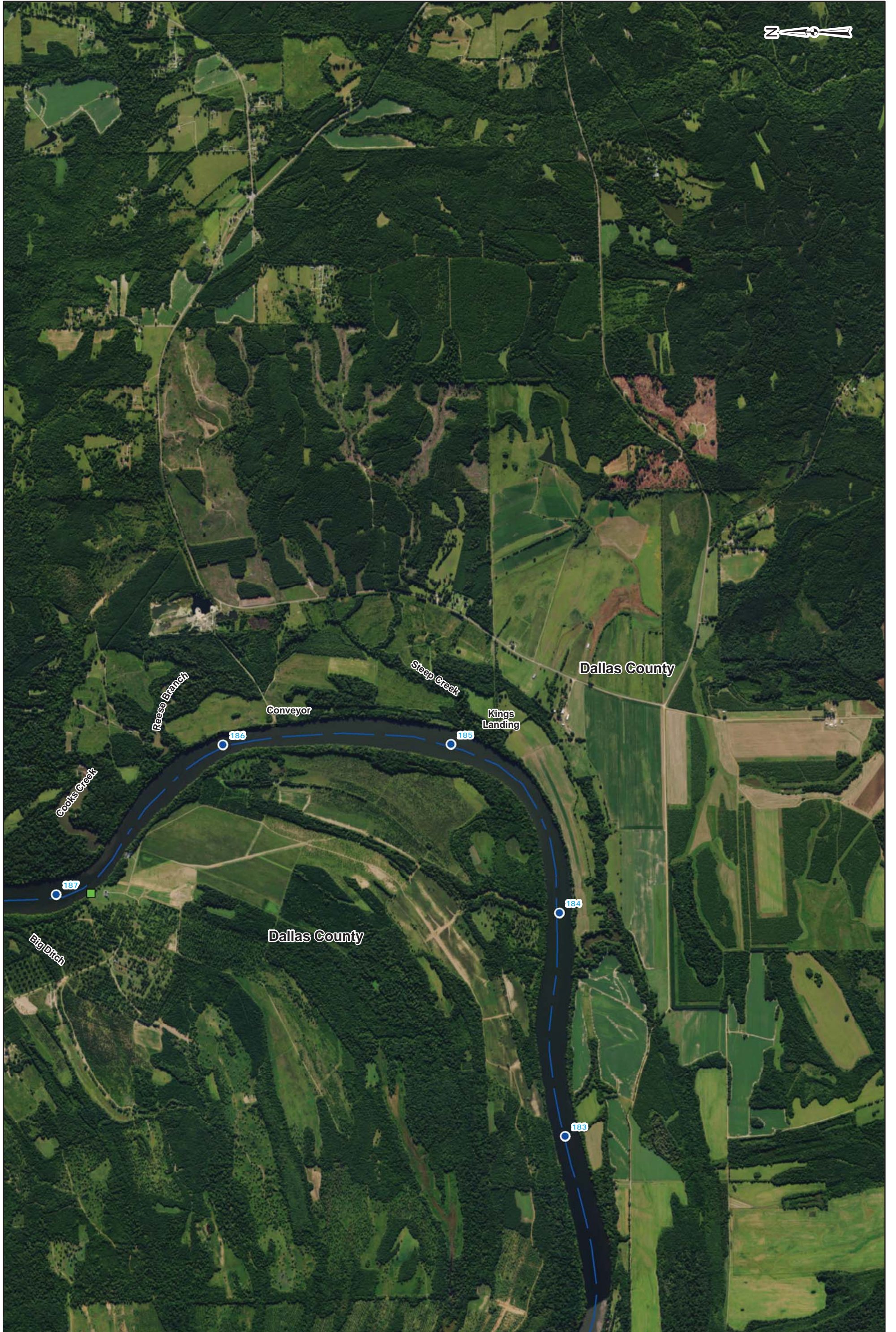








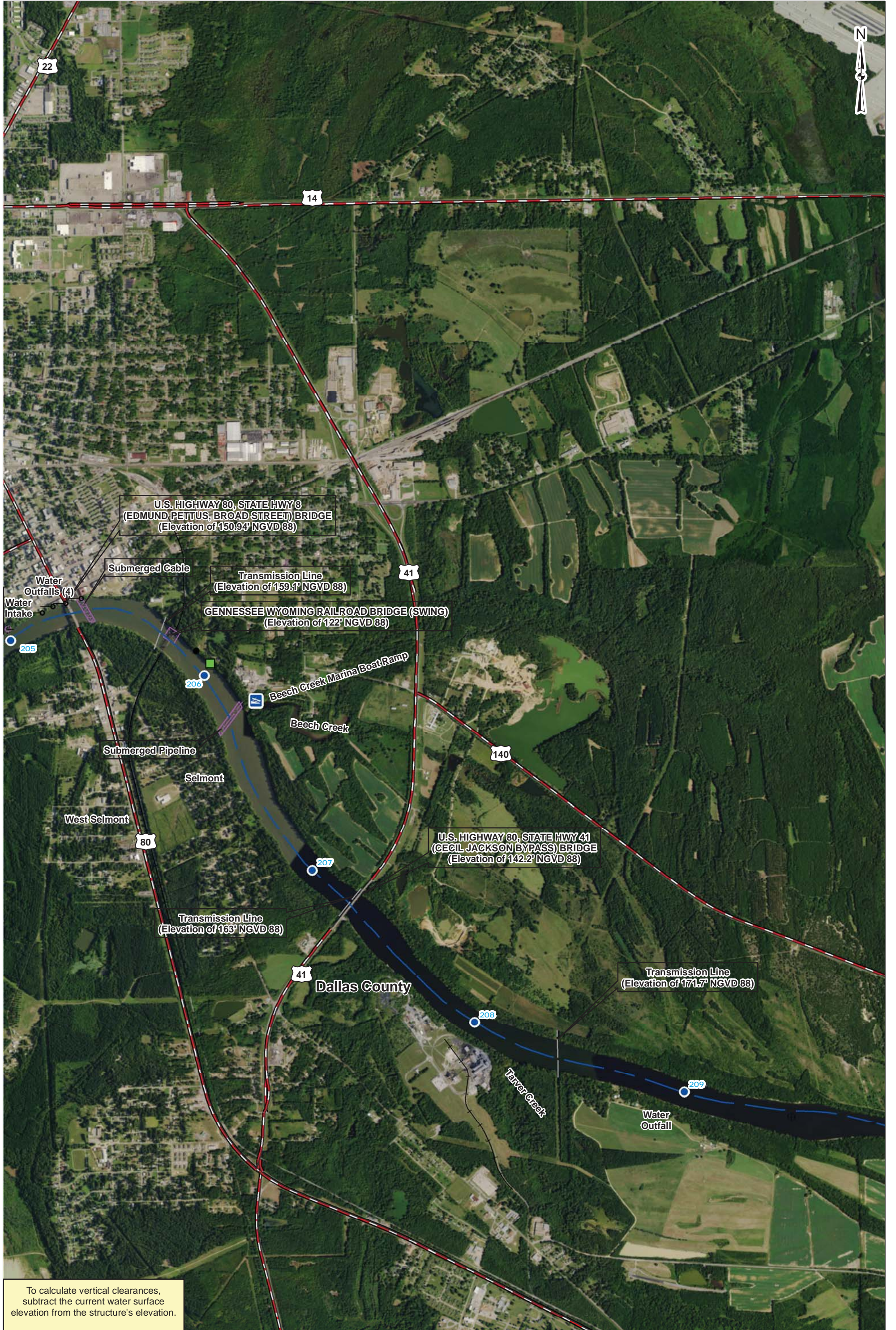






To calculate vertical clearances, subtract the current water surface elevation from the structure's elevation.



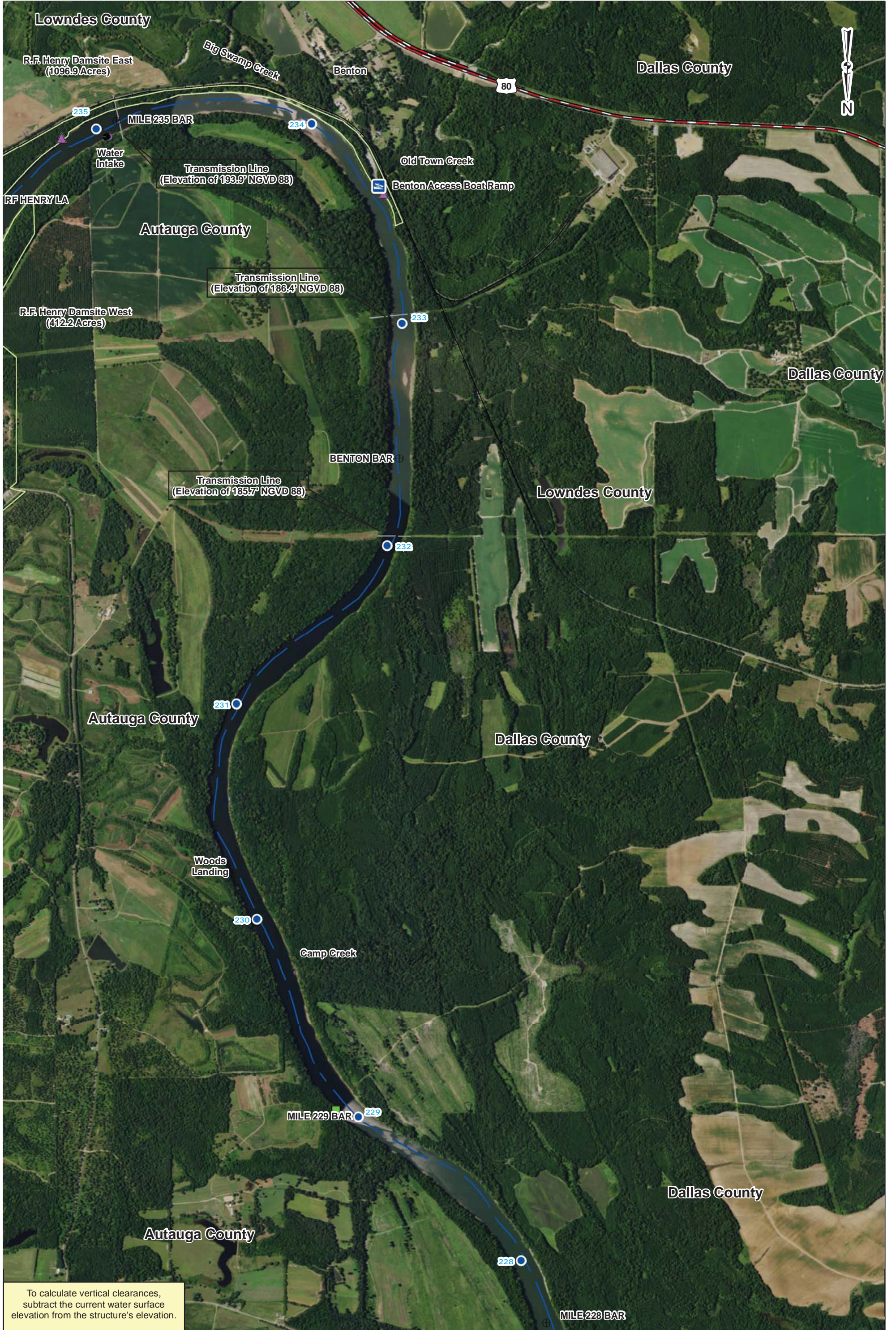


To calculate vertical clearances,
subtract the current water surface
elevation from the structure's elevation.

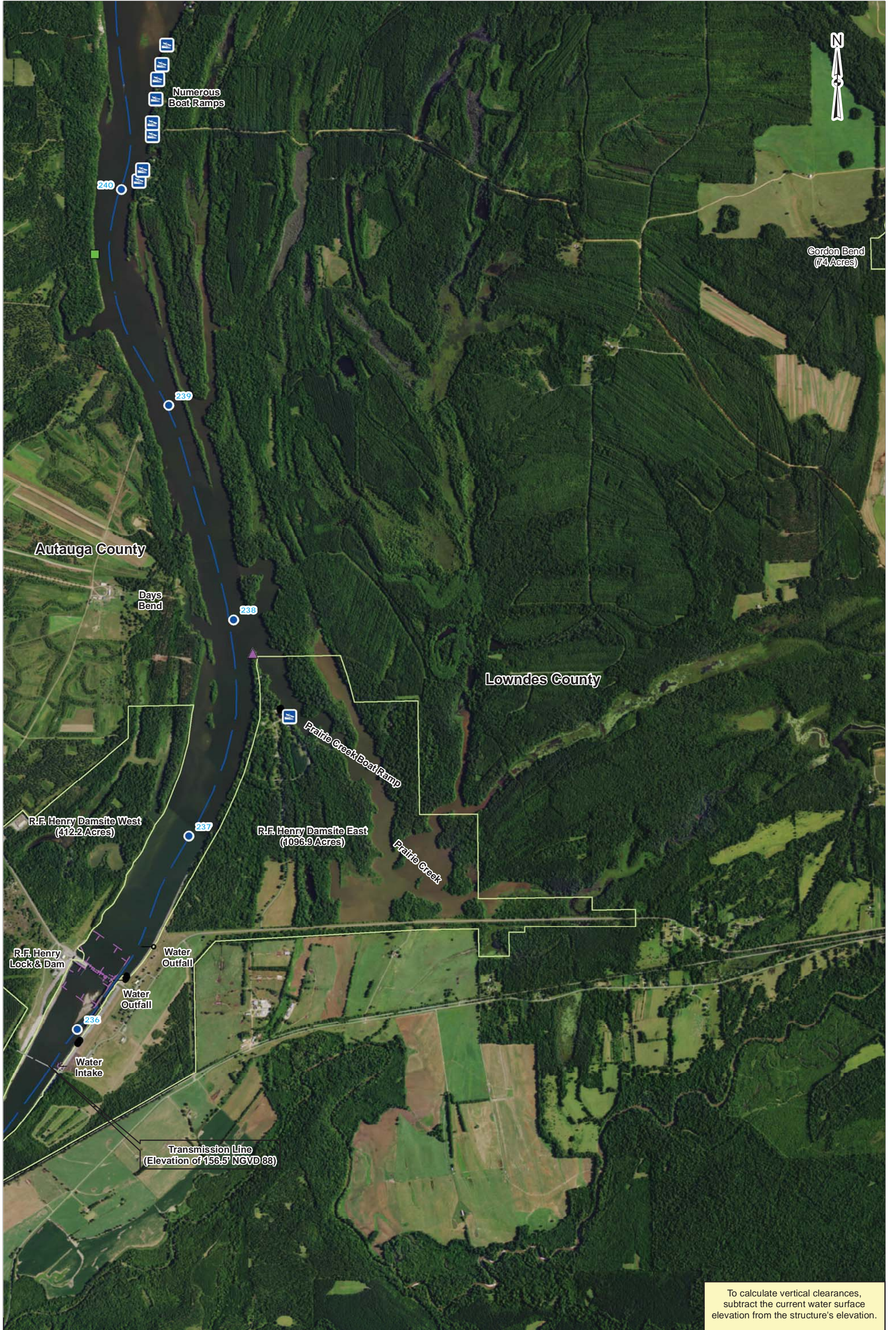




To calculate vertical clearances, subtract the current water surface elevation from the structure's elevation.



To calculate vertical clearances, subtract the current water surface elevation from the structure's elevation.



To calculate vertical clearances, subtract the current water surface elevation from the structure's elevation.