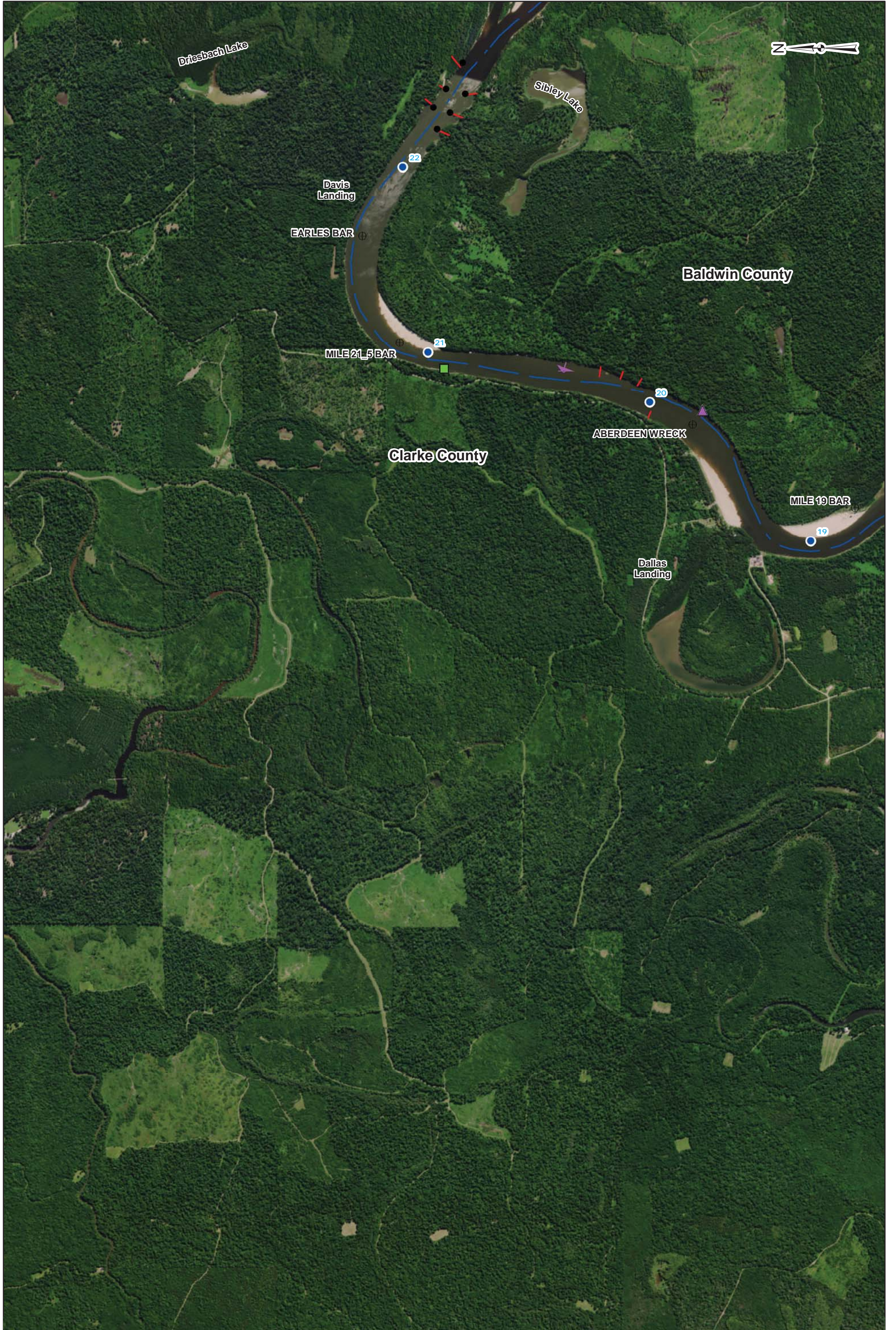
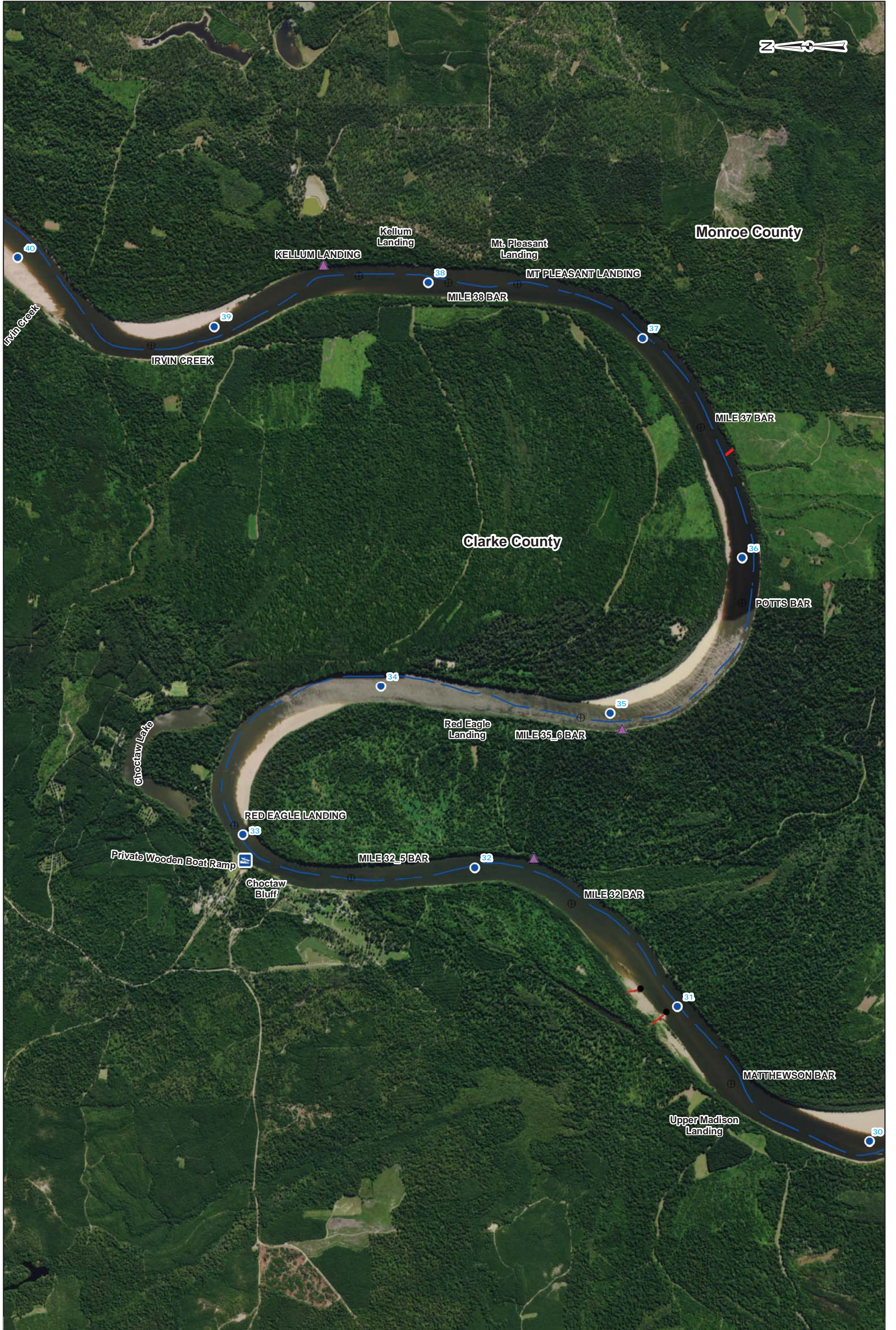
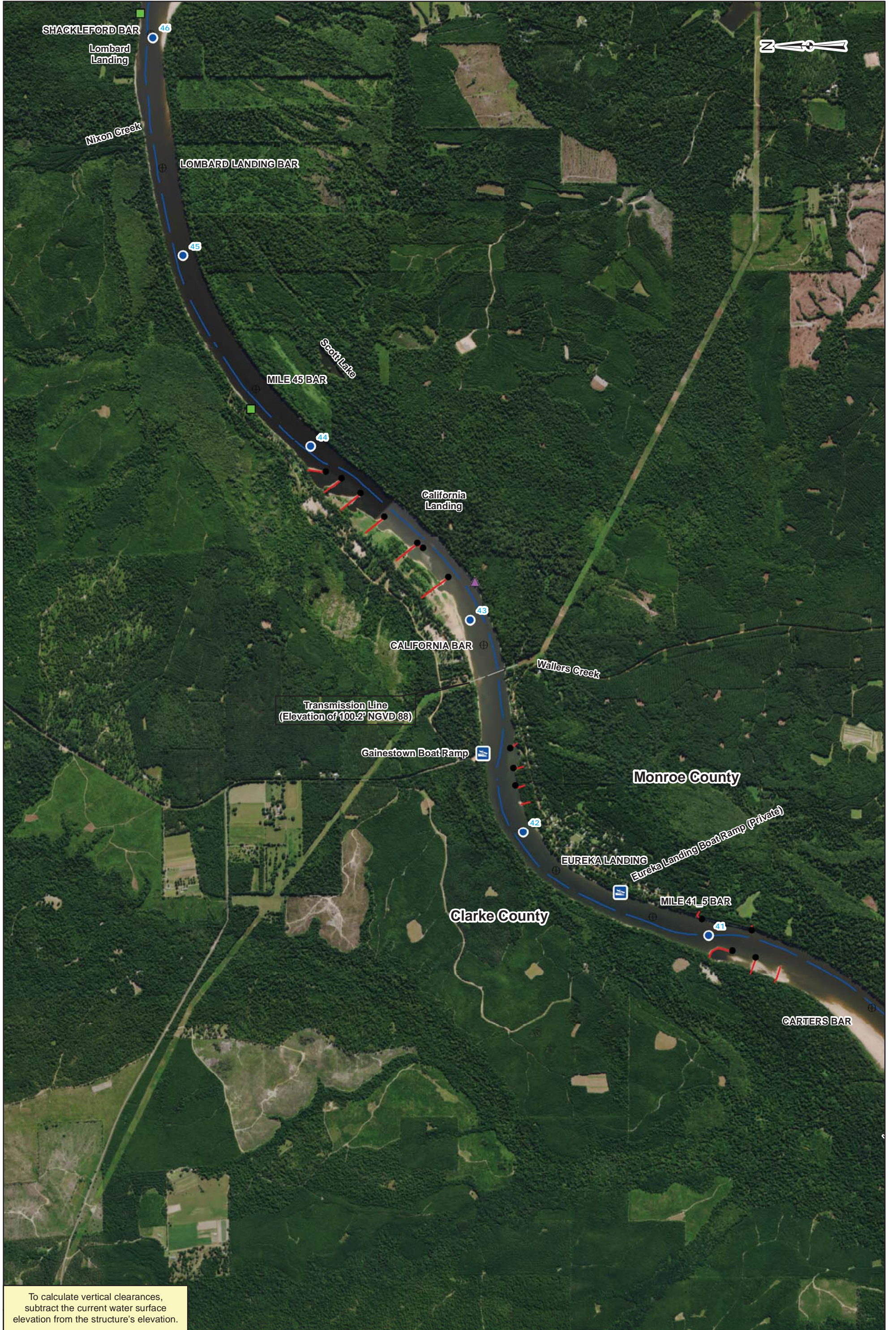


To calculate vertical clearances, subtract the current water surface elevation from the structure's elevation.



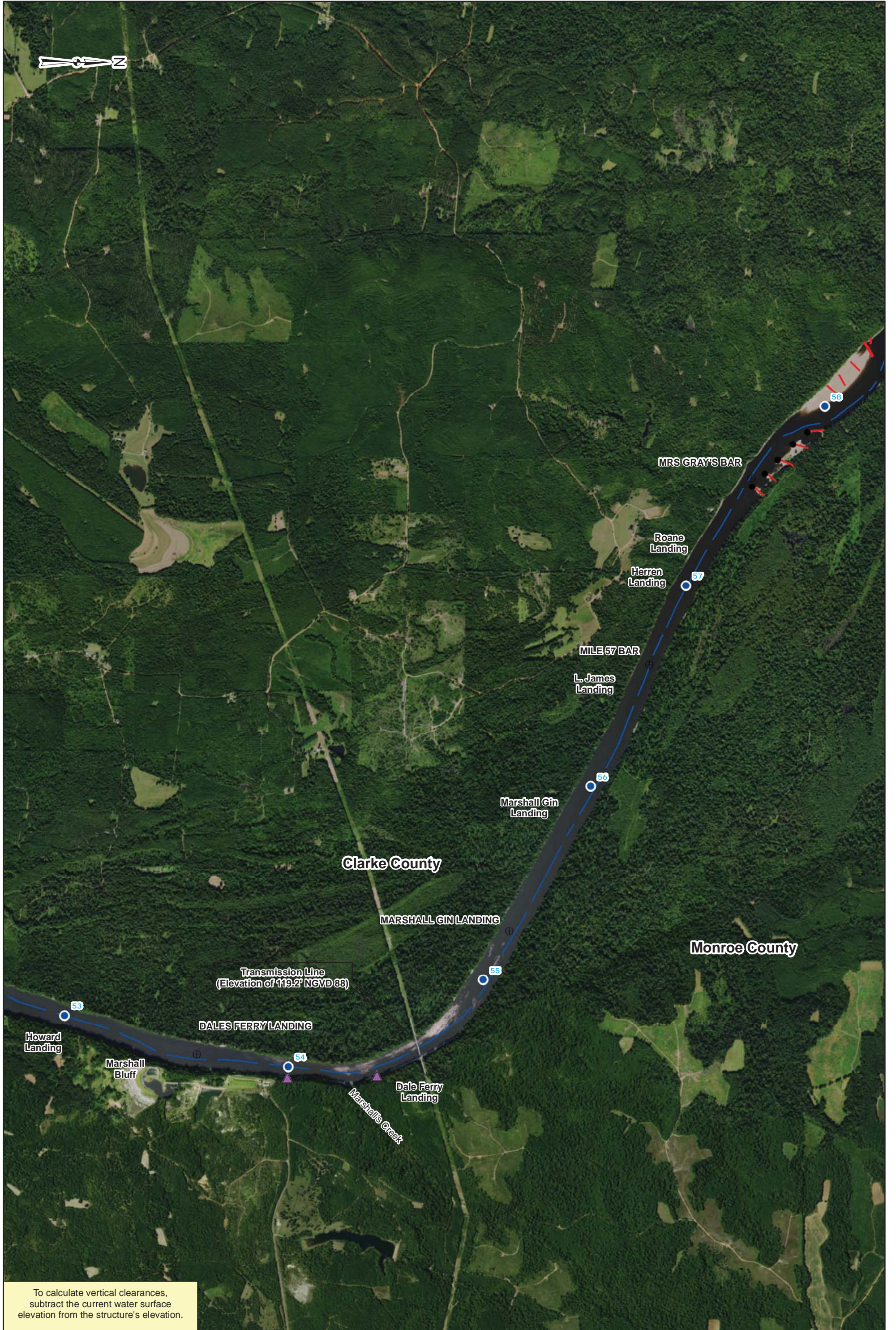




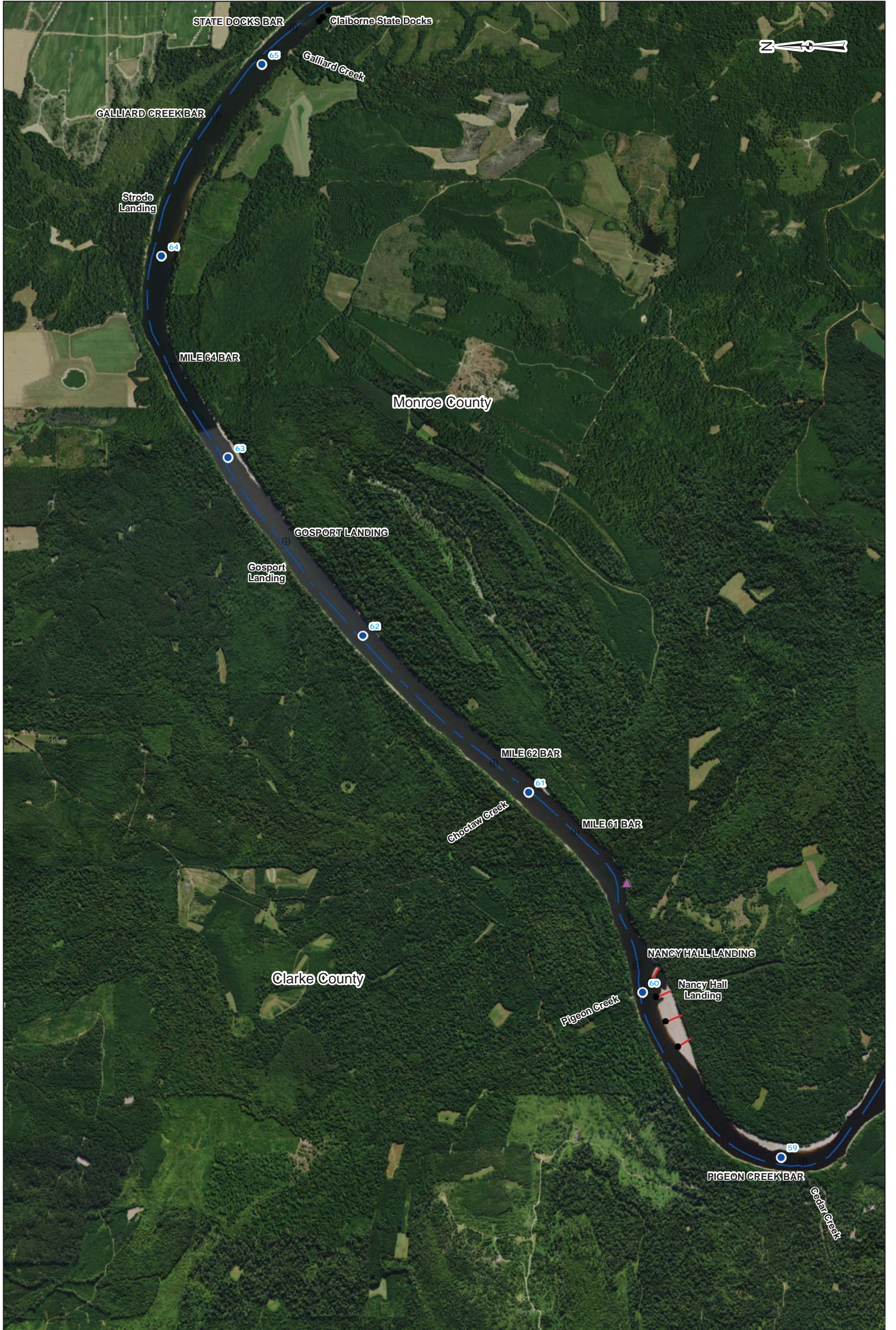


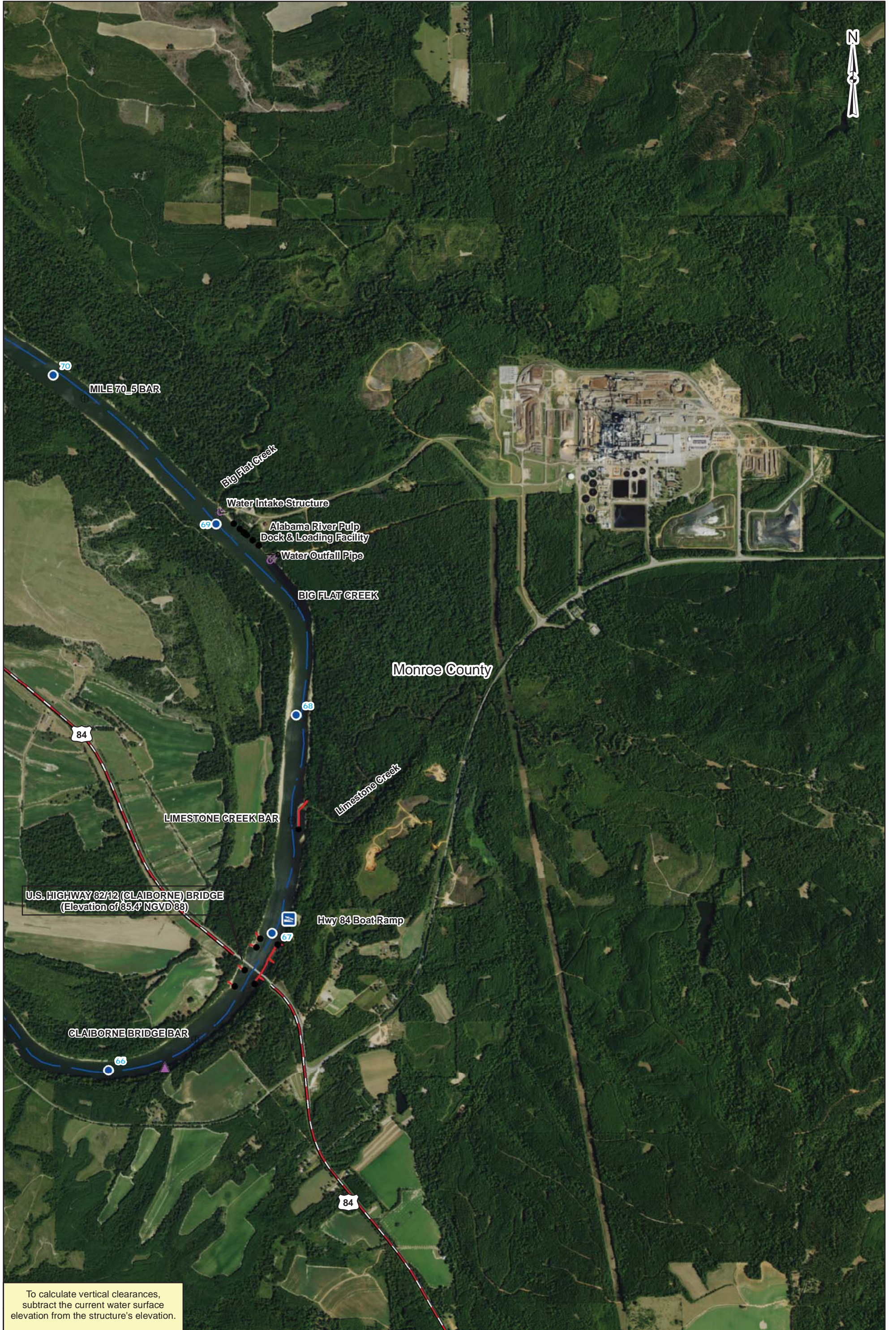
To calculate vertical clearances,
 subtract the current water surface
 elevation from the structure's elevation.





To calculate vertical clearances, subtract the current water surface elevation from the structure's elevation.





To calculate vertical clearances, subtract the current water surface elevation from the structure's elevation.

