



Path: C:\Users\jrabalais\Desktop\My\_Pipeline\MAPS\mxd\Report Maps\T&E\_11T&E Plan Views.mxd



**PLAINS SOUTHCAP L.L.C.  
T & E MAPS  
41-MILE-LONG TEN-MILE FACILITY TO  
PASCAGOULA PIPELINE PROJECT  
MOBILE COUNTY, AL**

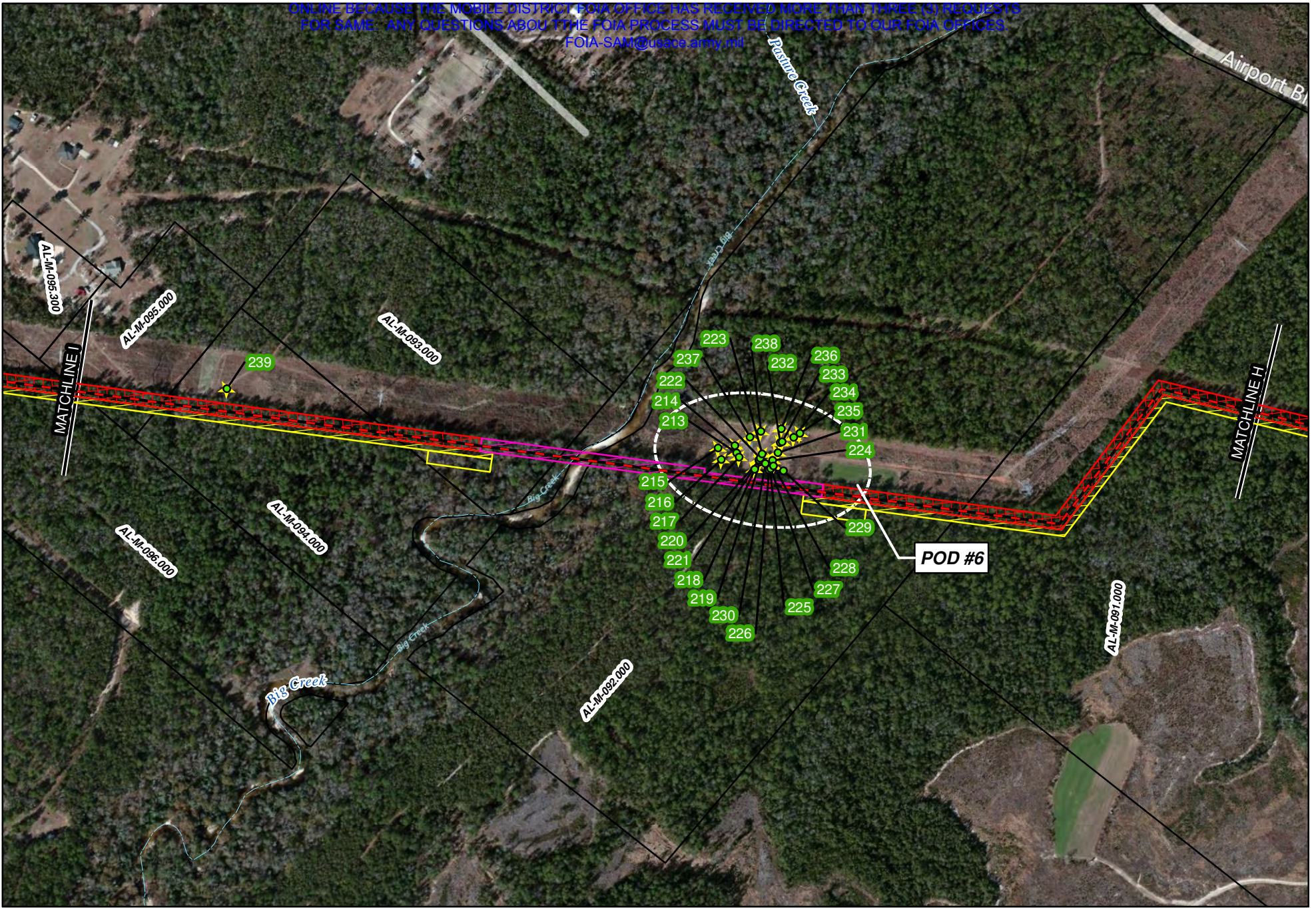
Legend					
	Centerline		HDD RoW		Active Burrow
	Permanent RoW		Burrow, Inside Work Corridor		Burrow, Outside Work Corridor
	Temporary RoW		Streams		
	Additional Workspace				

COMMENT:  
USACE MOBILE DISTRICT



Background: Bing Maps Hybrid (2012)  
Mapper: JR  
Approved By: EM  
SWCA Project No: 22332  
Date Produced: 8/24/2012  
Revision Date:  
0 250 500 Feet  
Coordinate System: NAD 1983 UTM Zone 16N  
Units: Foot US





Path: C:\Users\jrabalais\Desktop\My\_Projects\22932\_Pascagoula\_Pipeline\MAPS\mxd\Report Maps\T&E\_11T&E Plan Views.mxd



**PLAINS SOUTHCAP L.L.C.  
T & E MAPS  
41-MILE-LONG TEN-MILE FACILITY TO  
PASCAGOULA PIPELINE PROJECT  
MOBILE COUNTY, AL**

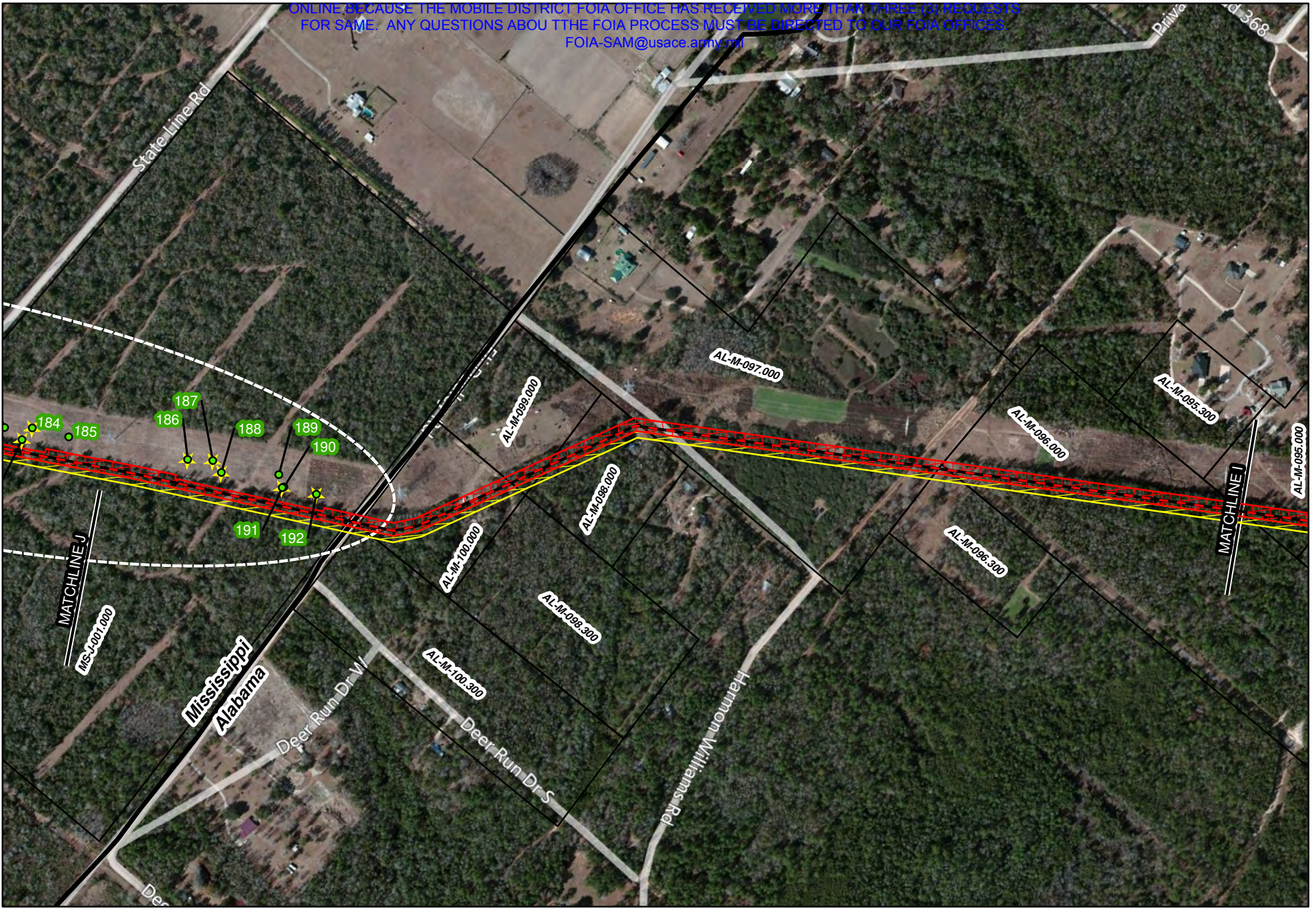
Legend			
	Centerline		Active Burrow
	Permanent RoW		Burrow, Inside Work Corridor
	Temporary RoW		Burrow, Outside Work Corridor
	Additional Workspace		Streams
	HDD RoW		

COMMENT:  
USACE MOBILE DISTRICT

Background: Bing Maps Hybrid (2012)  
Mapper: JR  
Approved By: EM  
SWCA Project No: 22932  
Date Produced: 8/24/2012  
Revision Date:

Coordinate System: NAD 1983 UTM Zone 16N  
Units: Feet US





Path: C:\Users\jrabalais\Desktop\My\_Projects\22932\_Pascagoula\_Pipeline\MAPS\mxd\Report Maps\T&E\_TIT&E Plan Views.mxd



**PLAINS SOUTHCAP L.L.C.  
T & E MAPS  
41-MILE-LONG TEN-MILE FACILITY TO  
PASCAGOULA PIPELINE PROJECT  
MISSISSIPPI / ALABAMA**

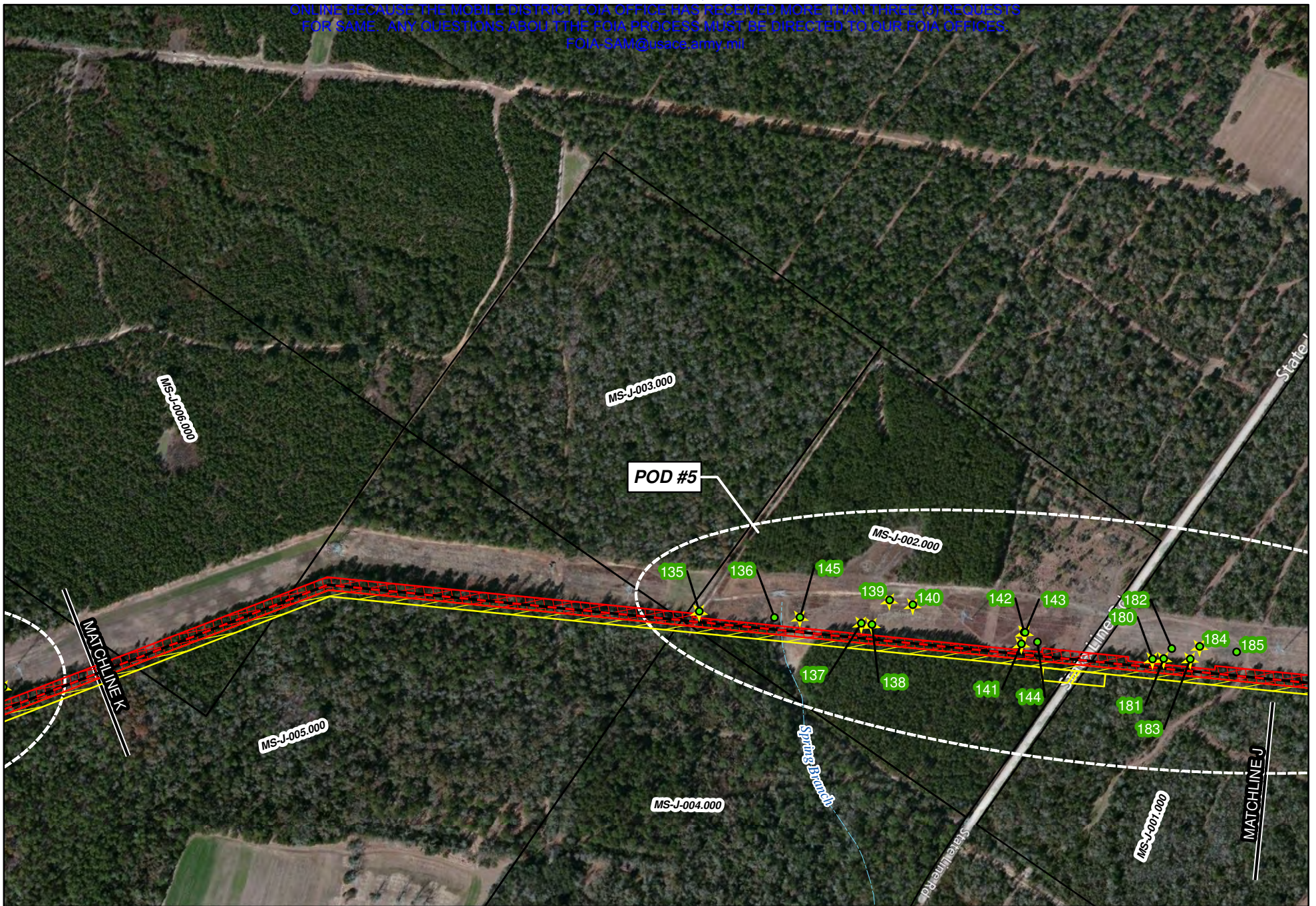
Legend	
Centerline	HDD RoW
Permanent RoW	Burrow, Inside Work Corridor
Temporary RoW	Burrow, Outside Work Corridor
Additional Workspace	Streams
	Active Burrow

COMMENT:  
USACE MOBILE DISTRICT

Background: Bing Maps Hybrid (2012)  
Mapper: JR  
Approved By: EM  
SWCA Project No: 22932  
Date Produced: 8/24/2012  
Revision Date:

Coordinate System: NAD 1983 UTM Zone 16N  
Units: Feet US





Path: C:\Users\jrabalais\Desktop\My\_Projects\22832\_Pascagoula\_Pipeline\MAPS\mxd\Report Maps\T&E\_11T&E\_Plan\_Visuals.mxd



**PLAINS SOUTHCAP L.L.C.**  
**T & E MAPS**  
**41-MILE-LONG TEN-MILE FACILITY TO**  
**PASCAGOULA PIPELINE PROJECT**  
**JACKSON COUNTY, MS**

**Legend**

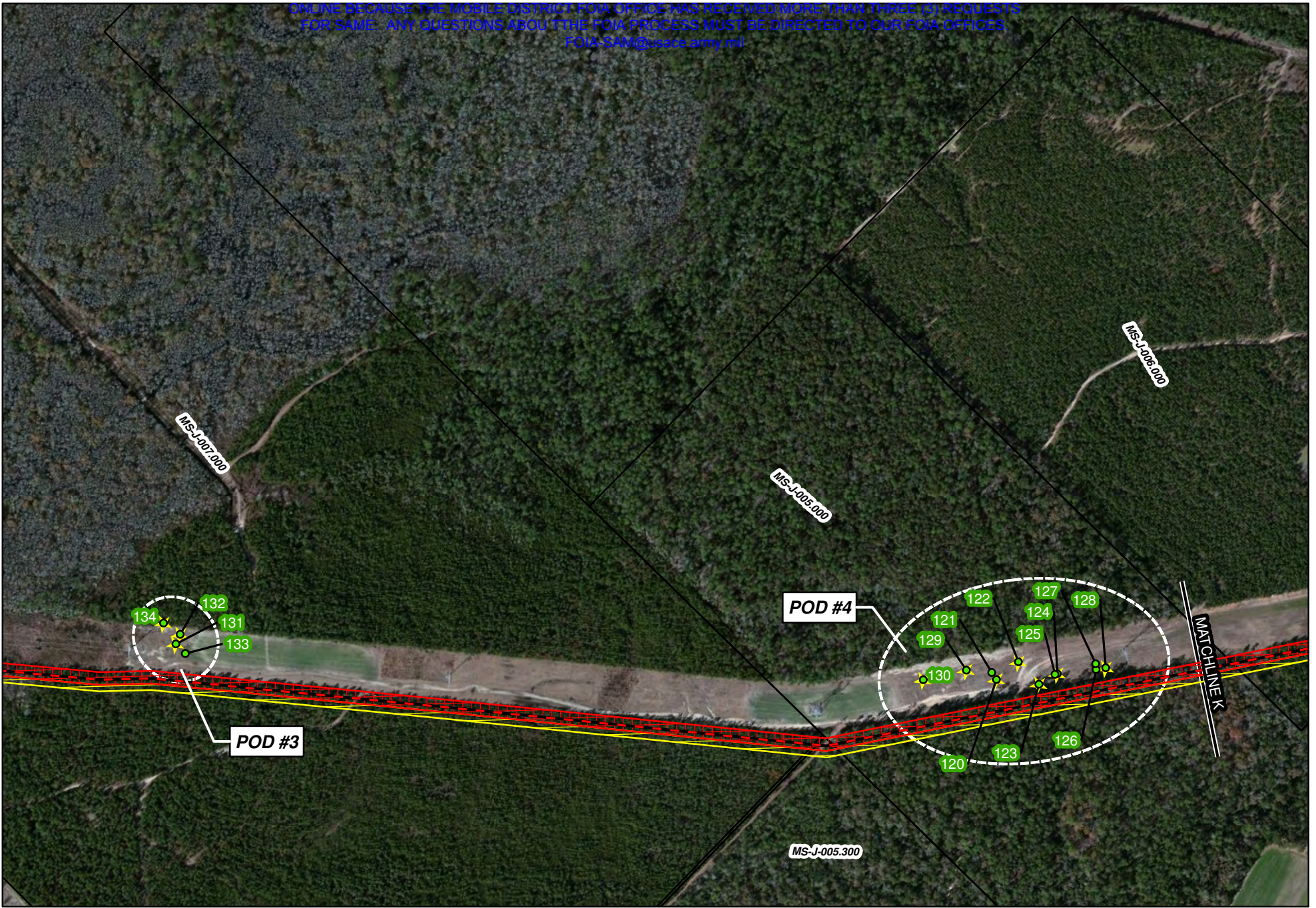
- Centerline
- Permanent RoW
- Temporary RoW
- Additional Workspace
- HDD RoW
- Burrow, Inside Work Corridor
- Burrow, Outside Work Corridor
- Streams
- ★ Active Burrow

COMMENT:  
 USACE MOBILE DISTRICT

Background: Bing Maps Hybrid (2012)  
 Mapper: JR  
 Approved By: EM  
 SWCA Project No: 22832  
 Date Produced: 8/24/2012  
 Revision Date:

Coordinate System: NAD 1983 UTM Zone 16N  
 Units: Feet US





Path: C:\Users\jrabalais\Desktop\My\_Projects\22932\_Pascagoula\_Pipeline\MAPS\mxd\Report Maps\T&E\_11T&E\_Plan\_VIEWS.mxd



**PLAINS SOUTHCAP L.L.C.  
T & E MAPS  
41-MILE-LONG TEN-MILE FACILITY TO  
PASCAGOULA PIPELINE PROJECT  
JACKSON COUNTY, MS**

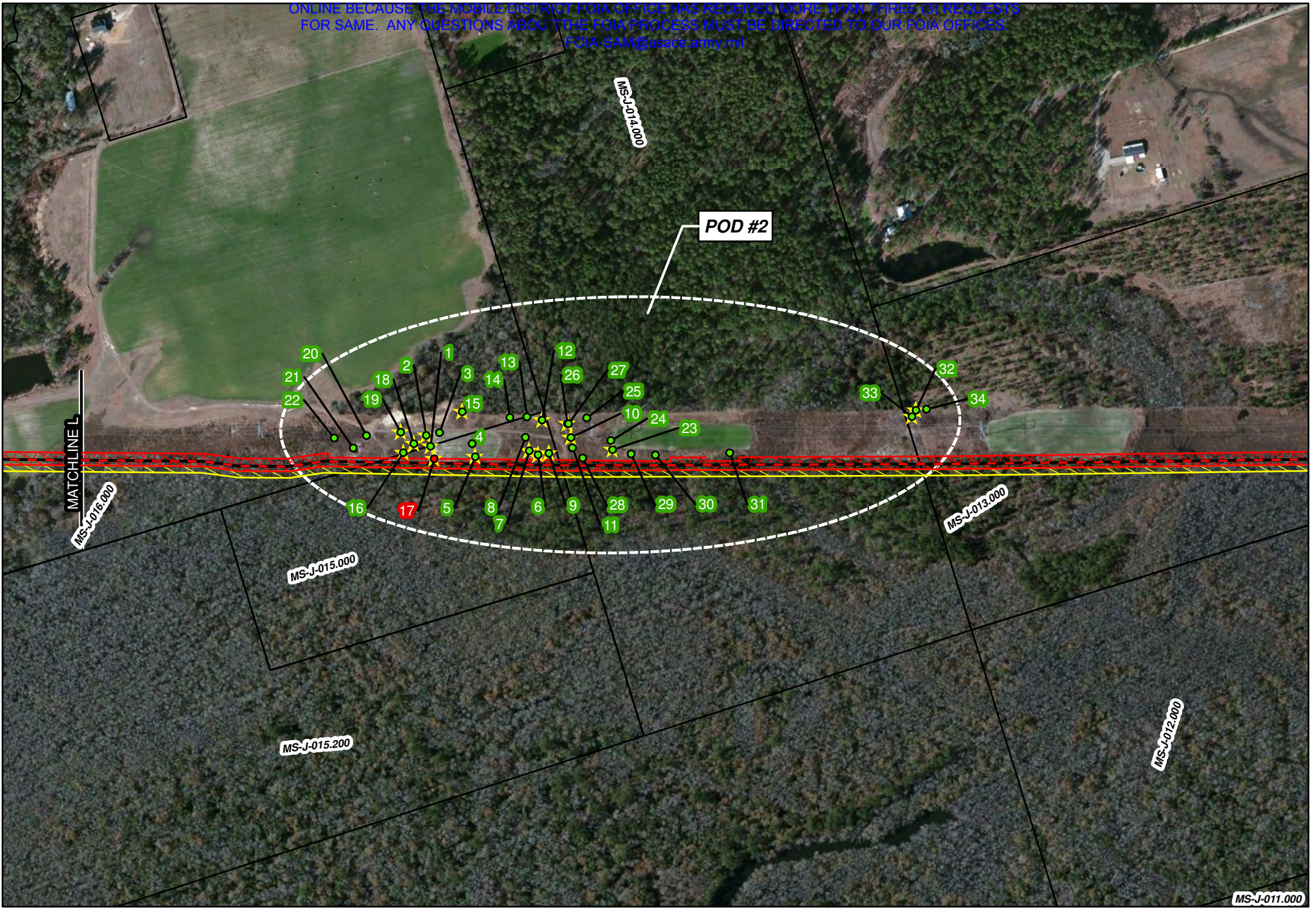
Legend					
	Centerline		HDD RoW		Active Burrow
	Permanent RoW		Burrow, Inside Work Corridor		Burrow, Outside Work Corridor
	Temporary RoW		Streams		
	Additional Workspace				

COMMENT:  
USACE MOBILE DISTRICT

Background: Bing Maps Hybrid (2012)  
Mapper: JR  
Approved By: EM  
SWCA Project No: 22932  
Date Produced: 8/24/2012  
Revision Date:

Coordinate System: NAD 1983 UTM Zone 16N  
Units: Feet US





Path: C:\Users\abalas\Desktop\My\_Projects\22932\_Pascagoula\_Pipeline\MAPS\mxd\Report Maps\T&E\T&E Plan Views.mxd



**PLAINS SOUTHCAP L.L.C.  
T & E MAPS  
41-MILE-LONG TEN-MILE FACILITY TO  
PASCAGOULA PIPELINE PROJECT  
JACKSON COUNTY, MS**

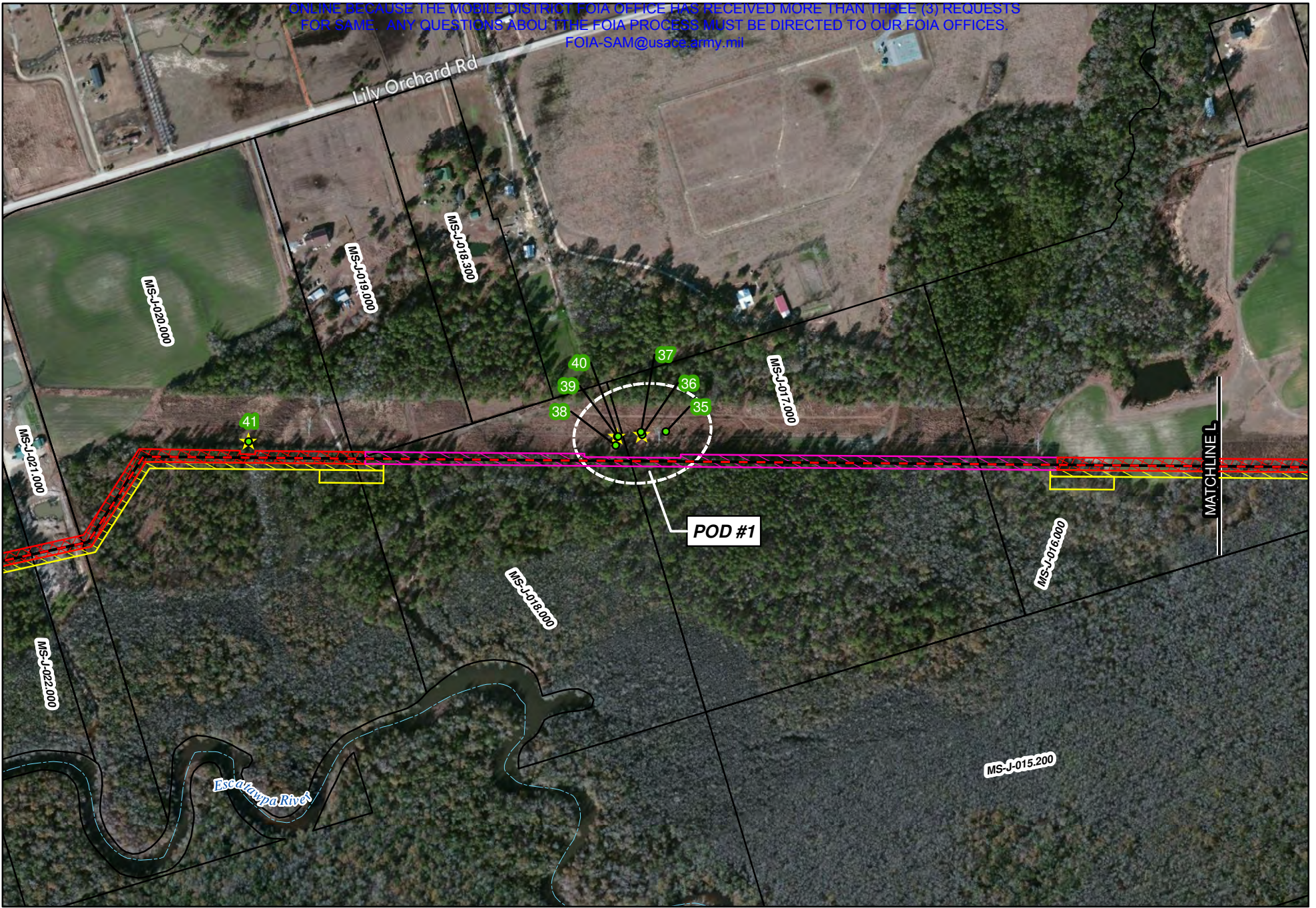
Legend	
Centerline	HDD RoW
Permanent RoW	Burrow, Inside Work Corridor
Temporary RoW	Burrow, Outside Work Corridor
Additional Workspace	Streams
	Active Burrow

COMMENT:  
USACE MOBILE DISTRICT

Background: Bing Maps Hybrid (2012)  
Mapper: JR  
Approved By: EM  
SWCA Project No: 22932  
Date Produced: 8/24/2012  
Revision Date:

Coordinate System: NAD 1983 UTM Zone 16N  
Units: Foot US





Path: C:\Users\abalas\Desktop\My\_Projects\22832\_Pascagoula\_Pipeline\MAPS\mxd\Report Maps\T&E\T&E Plan Views.mxd



**PLAINS SOUTHCAP L.L.C.  
T & E MAPS  
41-MILE-LONG TEN-MILE FACILITY TO  
PASCAGOULA PIPELINE PROJECT  
JACKSON COUNTY, MS**

Legend		
Centerline	HDD RoW	Active Burrow
Permanent RoW	Burrow, Inside Work Corridor	
Temporary RoW	Burrow, Outside Work Corridor	
Additional Workspace	Streams	

COMMENT:  
USACE MOBILE DISTRICT

Background: Bing Maps Hybrid (2012)  
Mapper: JR  
Approved By: EM  
SWCA Project No: 22832  
Date Produced: 8/24/2012  
Revision Date:

Coordinate System: NAD 1983 UTM Zone 16N  
Units: Feet US



AS REQUIRED BY THE FREEDOM OF INFORMATION ACT (FOIA) THIS FILE IS BEING MADE AVAILABLE  
ONLINE BECAUSE THE MOBILE DISTRICT FOIA OFFICE HAS RECEIVED MORE THAN THREE (3) REQUESTS  
FOR SAME. ANY QUESTIONS ABOUT THE FOIA PROCESS MUST BE DIRECTED TO OUR FOIA OFFICES.  
FOIA-SAM@usace.army.mil

---

---

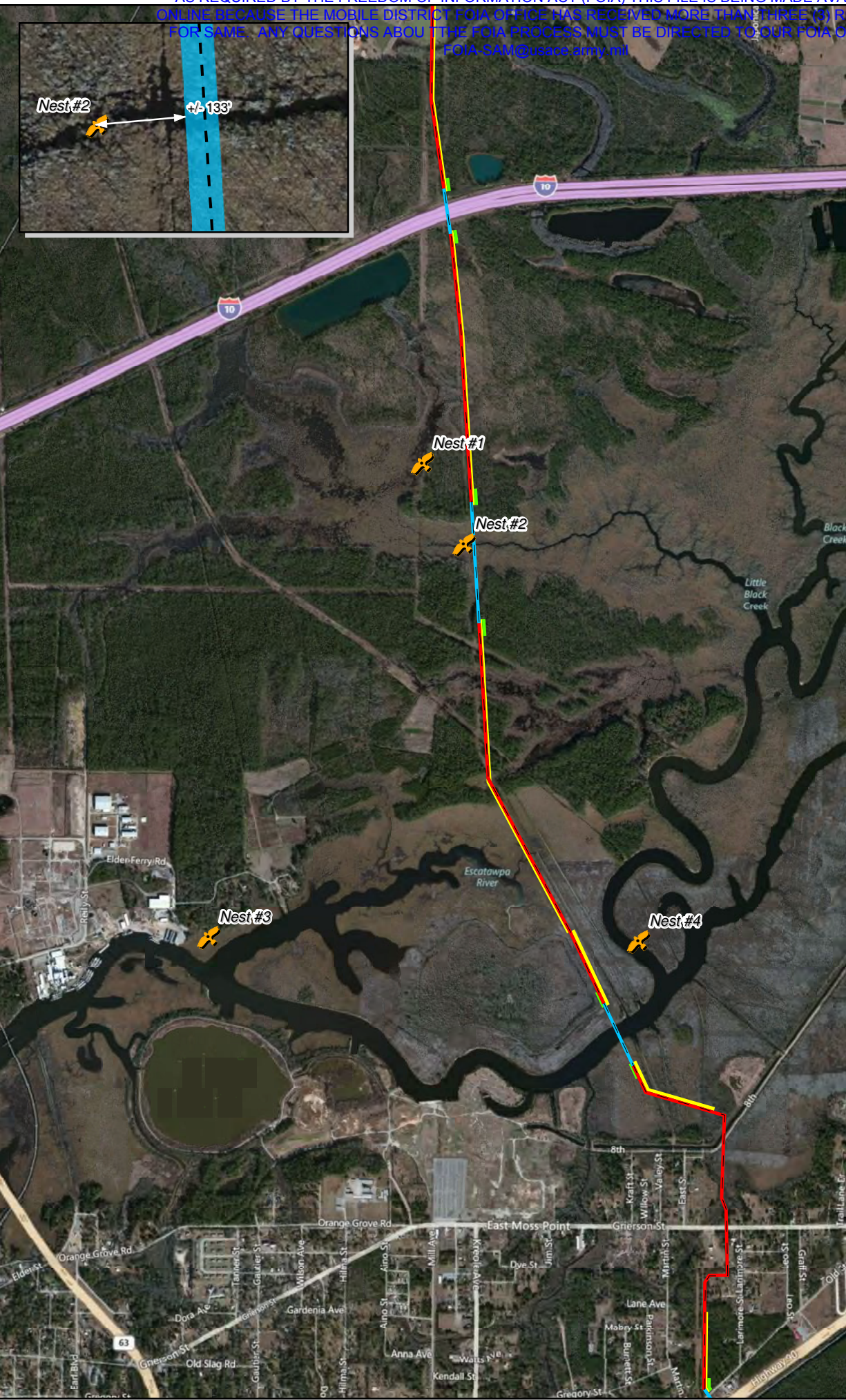
**Appendix C**  
**Bald Eagle Survey Map**

---

---



**PLAINS SOUTHCAP L.L.C.**  
**BALD EAGLE SURVEY**  
**41-MILE-LONG TEN-MILE FACILITY TO PASCAGOULA PIPELINE PROJECT**  
**JACKSON COUNTY, MS**  
**MOBILE COUNTY, AL**



- Nest #1\***  
88° 29' 51.88" W 30° 26' 42.12" N
- Nest #2\***  
88° 29' 44.51" W 30° 26' 30.09" N
- Nest #3**  
88° 30' 27.65" W 30° 25' 30.98" N
- Nest #4**  
88° 29' 13.52" W 30° 25' 31.23" N

\*Nests 1 & 2 may be Osprey Nests.

**Legend**

- Potential Bald Eagle Nest
- Centerline

**Construction Servitudes**

- Additional Workspace
- Permanent RoW
- HDD
- Temporary RoW



Background: USA Topo maps (ESRI Basemap)  
 Topographic Quad Name:  
 Mapper: JR  
 Approved By: EM  
 SWCA Project No: 22832  
 Date Produced: 08/24/2012  
 Revision Date:



**SWCA Environmental Consultants**  
 7281 Langley, Suite 100  
 Houston, Texas 77040  
 (713) 834-8900 phone  
 (713) 834-8906 fax  
 www.swca.com

