



## The Alabama Nature Heitage Program

Home > Data> Search Rare Species List> Search by County

Serach results for county Mobile:

### Rare, Threatened, & Endangered Species & Natural Communities Documented in Mobile County, Alabama

Scientific Name	Common Name	Global Rank	State Rank	Federal Status	State Status	State Priority
<u>Amphibians</u>						
<i>Ambystoma bishopi</i>	Reticulated Flatwoods Salamander <sup>4</sup>	G2G3	S1	LT	SP	P1
<i>Ambystoma tigrinum</i>	Tiger Salamander	G5	S3			
<i>Amphiuma means</i>	Two-toed Amphiuma	G5	S3			
<i>Amphiuma pholeter</i>	One-toed Amphiuma	G3	S1		SP	P2
<i>Desmognathus auriculatus</i>	Southern Dusky Salamander	G5	S2		SP	P1
<i>Rana heckscheri</i>	River Frog <sup>5</sup>	G5	S1			
<i>Rana sevosia</i>	Mississippi Gopher Frog <sup>6</sup>	G1	SH	LE	SP	P1
<u>Birds</u>						
<i>Ammodramus henslowii</i>	Henslow's Sparrow	G4	S2N		SP	P1
<i>Ammodramus leconteii</i>	Le Conte's Sparrow	G4	S3N		SP	
<i>Ammodramus maritimus</i>	Seaside Sparrow	G4	S2		SP	P2
<i>Ammodramus nelsoni</i>	Nelson's Sparrow	G5	S3N		SP	P2
<i>Anas fulvigula</i>	Mottled Duck	G4	S2N,S3B		SP	
<i>Asio flammeus</i>	Short-eared Owl	G5	S2N		SP	P2
<i>Athene cunicularia</i>	Burrowing Owl	G4	S2N		SP	
<i>Charadrius alexandrinus</i>	Snowy Plover	G4	S1B,S2N		SP	P1
<i>Charadrius melodus</i>	Piping Plover	G3	S1N	LE, LT7	SP	P1
<i>Charadrius wilsonia</i>	Wilson's Plover	G5	S1		SP	P1
<i>Circus cyaneus</i>	Northern Harrier	G5	S3N		SP	P2
<i>Cistothorus palustris</i>	Marsh Wren	G5	S2B,S4N		SP	

<i>Columbina passerina</i>	Common Ground-dove	G5	S3		SP	
<i>Coturnicops noveboracensis</i>	Yellow Rail	G4	S2N		SP	P2
<i>Crotophaga sulcirostris</i>	Groove-billed Ani	G5	S2N		SP	
<i>Egretta rufescens</i>	Reddish Egret	G4	S1B,S3N		SP	P2
<i>Elanoides forficatus</i>	Swallow-tailed Kite	G5	S2		SP	P2
<i>Eudocimus albus</i>	White Ibis	G5	S2B,S3N		SP	
<i>Gelochelidon nilotica</i>	Gull-billed Tern	G5	S2B,S4N		SP	
<i>Haematopus palliatus</i>	American Oystercatcher	G5	S1		SP	P1
<i>Hydroprogne caspia</i>	Caspian Tern	G5	S2B,S4N		SP	
<i>Ixobrychus exilis</i>	Least Bittern	G5	S2N,S4B		SP	P2
<i>Laterallus jamaicensis</i>	Black Rail	G4	S2N		GB	P2
<i>Mycteria americana</i>	Wood Stork	G4	S2N	LE	SP	P2
<i>Numenius americanus</i>	Long-billed Curlew	G5	S2N		SP	
<i>Passerina ciris</i>	Painted Bunting	G5	S2B		SP	
<i>Peucaea aestivalis</i>	Bachman's Sparrow	G3	S3		SP	P2
<i>Plegadis falcinellus</i>	Glossy Ibis	G5	S1B,S3N		SP	
<i>Porphyrio martinica</i>	Purple Gallinule	G5	S3B		GB	
<i>Rallus elegans</i>	King Rail	G4	S2S3B,S4N	SC	GB	
<i>Rallus longirostris</i>	Clapper Rail	G5	S2	SC	GB	
<i>Rynchops niger</i>	Black Skimmer	G5	S2B,S4N		SP	
<i>Scolopax minor</i>	American Woodcock	G5	S3B,S5N		GB	P2
<i>Sterna forsteri</i>	Forster's Tern	G5	S1B,S5N		SP	
<i>Sterna hirundo</i>	Common Tern	G5	S1B,S4N		SP	
<i>Sternula antillarum</i>	Least Tern	G4	S2B,S4N		SP	
<i>Thalasseus maximus</i>	Royal Tern	G5	S2B, S5N		SP	
<i>Thalasseus sandvicensis</i>	Sandwich Tern	G5	S1B,S5N		SP	
<i>Tringa semipalmata</i>	Willet	G5	S2B,S5N		SP	
<i>Tyrannus dominicensis</i>	Gray Kingbird	G5	S2B		SP	
<i>Tyrannus forficatus</i>	Scissor-tailed Flycatcher	G5	S2		SP	
<u>Crustaceans</u>						
<i>Cambarellus diminutus</i>	Least Crayfish	G3	S3			P2
<i>Cambarellus shufeldtii</i>	Cajun Dwarf Crayfish	G5	S2			
<i>Cambarus lesliei</i>	Angular Dwarf Crayfish5	G3	S3			P2

<i>Fallicambarus danielae</i>	Speckled Burrowing Crayfish	G2	S1				P2
<i>Fallicambarus oryktes</i>	Flatwoods Digger5	G4	S1				P2
<i>Procambarus bivittatus</i>	Ribbon Crayfish5	G5	S3S4				
<i>Procambarus clemmeri</i>	Cockscomb Crayfish	G5	S2				
<i>Procambarus evermanni</i>	Panhandle Crayfish	G4	S3				
<i>Procambarus lecontei</i>	Mobile Crayfish	G3G4	S3				
<i>Procambarus penni</i>	Pearl Blackwater Crayfish5	G3	S2				
<i>Procambarus shermani</i>	Gulf Crayfish	G4	S2				
<u>Fish</u>							
<i>Acipenser oxyrinchus desotoi</i>	Gulf Sturgeon3	G3T2	S1	LT	SP		P2
<i>Alosa alabamae</i>	Alabama Shad5	G3	S2	SC8	SP		P2
<i>Ammocrypta vivax</i>	Scaly Sand Darter	G5	S1				
<i>Atractosteus spatula</i>	Alligator Gar	G3G4	S2			CNGF	
<i>Cycleptus meridionalis</i>	Southeastern Blue Sucker	G3G4	S3			CNGF	
<i>Enneacanthus gloriosus</i>	Bluespotted Sunfish	G5	S3			GF	
<i>Etheostoma fusiforme</i>	Swamp Darter	G5	S3				
<i>Etheostoma lynceum</i>	Brighteye Darter	G5	S1			SP	P1
<i>Fundulus blaire</i>	Western Starhead Topminnow	G4	S3				
<i>Fundulus chrysotus</i>	Golden Topminnow	G5	S3				
<i>Fundulus cingulatus</i>	Banded Topminnow	G4	S2				
<i>Fundulus dispar</i>	Starhead Topminnow	G4	S2				
<i>Fundulus jenkinsi</i>	Saltmarsh Topminnow	G3	S1	SC9			
<i>Fundulus pulvereus</i>	Bayou Killifish	G5	S2				
<i>Heterandria formosa</i>	Least Killifish	G5	S3				
<i>Hiodon tergisus</i>	Mooneye	G5	S3S4				
<i>Lucania parva</i>	Rainwater Killifish	G5	S3				
<i>Lythrurus roseipinnis</i>	Cherryfin Shiner	G5	S2				
<i>Notropis chalybaeus</i>	Ironcolor Shiner5	G4	SH			SP	P1
<i>Notropis maculatus</i>	Taillight Shiner	G5	S3				
<i>Notropis petersoni</i>	Coastal Shiner	G5	S2				
<i>Noturus nocturnus</i>	Freckled Madtom	G5	S3			CNGF	
<i>Perca flavescens</i>	Yellow Perch	G5	S3			GF	

<i>Poecilia latipinna</i>	Sailfin Molly	G5	S2			
<i>Polyodon spathula</i>	Paddlefish	G4	S3		SP10	
<i>Pteronotropis signipinnis</i>	Flagfin Shiner	G5	S3			
<u>Insects</u>						
<i>Brachycentrus chelatus</i>	Caddisfly	G4	S1			
<i>Ceraclea resurgens</i>	Caddisfly	G5	S1			
<i>Chimarra falculata</i>	Caddisfly	G4	S1			
<i>Hydroptila parastrepha</i>	Caddisfly	G2G3	S1			
<i>Hydroptila scheiringi</i>	A Caddisfly	G1G2	S1			
<i>Neotrichia mobilensis</i>	Caddisfly	G1G2	S1S2			
<i>Nyctiophylax morsei</i>	Caddisfly	G2	S1			
<i>Oxyethira anabola</i>	Caddisfly	G4G5	S1			
<i>Oxyethira sininsigne</i>	Caddisfly	G3G4	S1			
<i>Polycentropus clinei</i>	A Caddisfly	G5	SNR			
<u>Mammals</u>						
<i>Lasiurus intermedius</i>	Northern Yellow Bat	G4G5	S1			P2
<i>Trichechus manatus</i>	West Indian Manatee	G2	S1	LE	SP	P1
<i>Trichechus manatus</i>	West Indian Manatee	G2G3	S1	LE	SP	P1
<i>Ursus americanus</i>	Black Bear	G5T2	S2		GANOS	P1
<u>Mussels</u>						
<i>Glebula rotundata</i>	Round Pearlshell	G4G5	S2			PS
<i>Ligumia subrostrata</i>	Pondmussel	G5	S3			PS
<u>Natural Communities</u>						
<i>Aristida beyrichiana</i> - <i>Rhynchospora oligantha</i> - <i>Panicum nudicaule</i> - ( <i>Eurybia eryngiifolia</i> ) <i>Herbaceous Vegetation</i>	East Gulf Coastal Plain Seepage Bog (upper Terrace Type)	G2	S2			
<i>Ceratiola ericoides</i> - ( <i>Chrysoma pauciflosculosa</i> ) / <i>Polygonella polygama</i> / <i>Cladonia leporina</i> <i>Shrubland</i>	Coastal Rosemary - Woody-goldenrod Scrub	G2?	SNR			
<i>Juncus roemerianus</i> - <i>Herbaceous Vegetation</i>	Needlerush High Marsh	G5	S2S3			
<i>Nyssa biflora</i> / <i>Ilex myrtifolia</i> / <i>Carex glaucescens</i> -	East Gulf Coastal Plain Blackgum Dome Swamp	G2G3	SNR			

<i>Eriocaulon compressum</i> Forest			
<i>Pinus palustris</i> - ( <i>Pinus elliotii</i> var. <i>elliotii</i> )/ <i>Ctenium aromaticum</i> - <i>Carphephorus pseudoliatris</i> - ( <i>Sarracenia alata</i> ) Woodland	East Gulf Coastal Plain Wet Longleaf Pine Savanna	G3?	S2
<i>Quercus laurifolia</i> - <i>Magnolia virginiana</i> - <i>Nyssa biflora</i> / <i>Chasmanthium ornithorhynchum</i> Forest	East Gulf Coastal Plain Blackgum Bayhead Forest (clayey Type)	G2?	S2
<i>Quercus virginiana</i> - ( <i>Juniperus virginiana</i> ) - <i>Zanthoxylum clavaherculis</i> / <i>Sideroxylon lanuginosum</i> Woodland	Gulf Coast Shell Midden Woodland	G2G3	SNR
<i>Sarcocornia perennis</i> - ( <i>Batis maritima</i> , <i>Distichlis spicata</i> ) Dwarf-shrubland	Salt Flat (woody Glasswort Type)	G4	S1
<i>Spartina alterniflora</i> - <i>Juncus roemerianus</i> - <i>Distichlis spicata</i> Louisianian Zone Salt Tidal Herbaceous Vegetation	Gulf Coast Cordgrass Salt Marsh	G5	S2S3
<i>Spartina patens</i> - <i>Schizachyrium maritimum</i> - <i>Solidago sempervirens</i> Herbaceous Vegetation	East Gulf Coastal Plain Cordgrass Dune Grassland	G3?	SNR
<i>Spartina patens</i> - <i>Schoenoplectus (americanus, pungens)</i> - ( <i>Distichlis spicata</i> ) Herbaceous Vegetation	Saltmeadow Cordgrass - (chairmaker's Bulrush, Threesquare) - (saltgrass) Herbaceous Vegetation	G4?	SNR
<i>Spartina spartinae</i> - <i>Sporobolus virginicus</i> Tidal Herbaceous	Gulf Coast Irregularly Flooded Tidal Marsh	G4G5	SNR

*Vegetation*

*Taxodium ascendens* -

*Ilex myrtifolia* -

*Hypericum myrtifolium* Pond-cypress Dome

G3

S1

- *Lobelia floridana* - Swamp

*Polygala cymosa*

*Woodland*

Reptiles

*Apalone ferox* Florida Softshell G5 S2 RT

*Caretta caretta* Loggerhead Sea Turtle G3 S1 LT SP P1

*Chelonia mydas* Green Sea Turtle11 G3 S1 LE, LT12 SP P1

*Crotalus adamanteus* Eastern Diamondback Rattlesnake G4 S3 P2

*Deirochelys reticularia* Chicken Turtle G5 S3

*Dermochelys coriacea* Leatherback Sea Turtle13 G2 SNA LE SP P1

*Drymarchon couperi* Eastern Indigo Snake G3 S1 LT SP P1, possibly extirpated

*Farancia erythrogramma* Rainbow Snake G4 S3 SP P2

*Gopherus polyphemus* Gopher Tortoise G3 S3 LT14 SP P2

*Graptemys nigrinoda delticola* Delta Map Turtle2 G3T2Q S2 SP

*Graptemys pulchra* Alabama Map Turtle G4 S3 SP

*Lampropeltis calligaster rhombomaculata* Mole Kingsnake G5T5 S3

*Lampropeltis getula getula* Eastern Kingsnake G5T5 S4 SP P2

*Lampropeltis getula holbrooki* Speckled Kingsnake G5T5 S4 SP P2

*Lepidochelys kempii* Kemp's Ridley Sea Turtle15 G1 S1 LE SP P1

*Macrochelys temminckii* Alligator Snapping Turtle G3G4 S3 SP P2

*Malaclemys terrapin pileata* Mississippi Diamondback Terrapin G4T3Q S2 SP P1

*Masticophis flagellum* Coachwhip G5 S3 SP

*Micrurus fulvius* Eastern Coral Snake G5 S3 SP P2

<i>Nerodia clarkii clarkii</i>	Gulf Salt Marsh Snake	G4T4	S2		SP	
<i>Nerodia cyclopion</i>	Green Water Snake	G5	S1S2			
<i>Ophisaurus mimicus</i>	Mimic Glass Lizard	16	G3	S2	SP	P2
<i>Pituophis melanoleucus lodingi</i>	Black Pine Snake	G4T2T3	S2	C	SP	P1
<i>Plestiodon anthracinus</i>	Coal Skink	17	G5	S3	SP	P2
<i>Plestiodon inexpectatus</i>	Southeastern Five-lined Skink	G5	S3		SP	P2
<i>Pseudemys alabamensis</i>	Alabama Redbelly Turtle	G1	S1	LE	SP	P1
<i>Rhadinaea flavilata</i>	Pine Woods Snake	G4	S2			
<i>Sternotherus carinatus</i>	Razorback Musk Turtle	G5	S1			
<u>Snails</u>						
<i>Ferrissia mcneili</i>	Hood Ancyloid	2	G2G3	S2		
<u>Vascular Plants</u>						
<i>Agalinis aphylla</i>	Leafless False-foxtail	G3G4	S2			
<i>Agalinis filicaulis</i>	Thin-stemmed False-foxtail	G3G4	S2			
<i>Agalinis linifolia</i>	Flax-leaf False-foxtail	G4?	S2			
<i>Agrimonia incisa</i>	Incised Groovebur	G3	S2			
<i>Andropogon virginicus var. glaucus</i>	Beardgrass	G5T4T5	S2			
<i>Botrychium jenmanii</i>	Alabama Grapefern	G3G4	S1			
<i>Calopogon barbatus</i>	Bearded Grass-pink	G4?	S1			
<i>Calopogon multiflorus</i>	Many-flowered Grass-pink	G2G3	S1			
<i>Canna flaccida</i>	Bandana-of-the-everglades	G4?	S1			
<i>Carex striata</i>	Walter's Sedge	G4G5	S1			
<i>Chasmanthium nitidum</i>	Shiny Spikegrass	G3	S1			
<i>Cirsium lecontei</i>	Le Conte's Thistle	G2G3	S1			
<i>Cladium mariscoides</i>	Twig Rush	G5	S1			
<i>Coreopsis gladiata</i>	Southeastern Tickseed	G4G5	S2			
<i>Coreopsis nudata</i>	Georgia Tickseed	G3?	S1			
<i>Eleocharis olivacea</i>	Capitate Spikerush	G5	S1			
<i>Eleocharis robbinsii</i>	Robbins' Spikerush	G4G5	S1			
<i>Eleocharis rostellata</i>	Beaked Spikerush	G5	S1			

<i>Epidendrum magnoliae</i>	Green-fly Orchid	G4	S2
<i>Eriocaulon texense</i>	Texas Pipewort	G4	S2
<i>Eurybia chapmanii</i>	Chapman Aster	G2G3	SH
<i>Gordonia lasianthus</i>	Loblolly Bay	G5	S1
<i>Helianthemum arenicola</i>	Coastal-sand Frostweed	G3	S1
<i>Hibiscus coccineus</i>	Brilliant Hibiscus	G4?	S1
<i>Hypericum reductum</i>	Atlantic St. John's-wort	G5	S2
<i>Ilex amelanchier</i>	Serviceberry Holly	G4	S2
<i>Juncus gymnocarpus</i>	Naked-fruited Rush	G4	S2
<i>Lachnocaulon digynum</i>	Pineland Bogbutton	G3	S2
<i>Lepuropetalon spathulatum</i>	Southern Lepuropetalon5	G4G5	SH
<i>Lilaeopsis carolinensis</i>	Carolina Lilaeopsis	G3G5	S1
<i>Lindera subcoriacea</i>	Bog Spicebush	G2G3	S1
<i>Linum macrocarpum</i>	Flax	G2	S1
<i>Ludwigia arcuata</i>	Pond Seedbox	G4G5	SH
<i>Ludwigia spathulata</i>	Spathulate Seedbox	G2	S1S2
<i>Lycium carolinianum</i>	Christmas Berry	G4	S1S2
<i>Macranthera flammea</i>	Flame Flower	G3	S2
<i>Myriophyllum laxum</i>	Loose Water-milfoil	G3	S2
<i>Orbexilum simplex</i>	Single-stemmed Scurf-pea	G4G5	SH
<i>Panicum nudicaule</i>	Naked-stemmed Panic Grass	G3Q	S2
<i>Peltandra sagittifolia</i>	Spoon-flower	G3G4	S2
<i>Pieris phillyreifolia</i>	Climbing Fetter-bush	G3	S2
<i>Pinguicula planifolia</i>	Chapman's Butterwort	G3?	S1S2
<i>Platanthera blephariglottis</i> var. <i>conspicua</i>	Large White Fringed Orchid	G4G5T3T4	S1S2
<i>Platanthera integra</i>	Yellow Fringeless Orchid	G3G4	S2
<i>Platanthera nivea</i>	Snowy Orchis	G5	S2
<i>Polygala crenata</i>	Crenate Milkwort	G4?	S1
<i>Pteroglossaspis ecristata</i>	Crestless Eulophia	G2	S1
<i>Ptilimnium costatum</i>	Eastern Bishop-weed	G4	S1
<i>Quercus similis</i>	Bottomland-post Oak	G4	S1



<i>Rhynchospora crinipes</i>	Hairy-peduncled Beakrush	G2	S1	
<i>Rhynchospora macra</i>	Southern White Beak Rush	G3	S1	
<i>Rhynchospora stenophylla</i>	Chapman Beakrush	G4	S2	
<i>Rhynchospora tracyi</i>	Tracy's Beak Rush	G4	S1	
<i>Ruellia noctiflora</i>	Night-flowering Wild-petunia	G2	S1	
<i>Sageretia minutiflora</i>	Tiny-leaved Buckthorn	G4	S1	
<i>Sarracenia leucophylla</i>	Whitetop Pitcher-plant	G3	S3	
<i>Sarracenia rubra ssp. wherryi</i>	Wherry's Sweet Pitcher-plant	G4T3	S3	
<i>Schizachyrium maritimum</i>	Gulf Bluestem	G3G4Q	S1	
<i>Schizachyrium scoparium ssp. divergens</i>	Eastern Little Bluestem	G5T5	SH	
<i>Schwalbea americana</i>	Chaffseed5	G2G3	S1	LE
<i>Spiranthes longilabris</i>	Giant Spiral Ladies'-tresses	G3	S1	
<i>Utricularia floridana</i>	Florida Bladderwort	G3G5	S1S2	
<i>Xyris chapmanii</i>	Chapman's Yellow-eyed Grass	G3	S1	
<i>Xyris drummondii</i>	Drummond's Yellow-eyed Grass	G3	S3	
<i>Xyris scabrifolia</i>	Harper's Yellow-eyed Grass	G3	S1S2	

1 Priority as identified in the State Wildlife Action Plan and its list of Species of Greatest Conservation Concern (for more information on SWAP, see <http://www.outdooralabama.com/research-mgmt/swcs/>).

2 Alabama endemic.

3 No occurrence record in ALNHP database but the US Fish & Wildlife Service (<http://www.fws.gov/daphne/es/specieslst.html#Mobile>) lists this species as occurring in Mobile County.

4 Historic occurrence, not documented in Alabama since 1981.

5 Historic occurrence.

6 Historic occurrence, possibly extirpated in Alabama.

7 Listed by USFWS as Endangered in Great Lakes watersheds of Illinois, Indiana, Michigan, Minnesota, New York, Ohio, Pennsylvania, and Wisconsin; Listed as Threatened elsewhere, including Alabama.

8 Listed as a species of concern by the National Marine Fisheries Service (Federal Register

- 69(73):19975-19979, available at ).
- 9 Listed as a species of concern by the National Marine Fisheries Service (Federal Register 69(73):19975-19979, available at <http://www.nmfs.noaa.gov/pr/pdfs/fr/fr64-19975.pdf>)
- 10 Polydon spathula protected by Regulations 220-2-.94, page 63, and 220-2-.43, page 62, of the Alabama Regulations for 2007-2008 on Game, Fish, and Fur Bearing Animals.
- 11 Possible occurrence
- 12 Listed as Threatened throughout most of its range, including Alabama, except in Florida and Mexico where it is listed as Endangered.
- 13 Occasional visitor but not known to nest in state.
- 14 Listed by USFWS as Threatened west of the Mobile and Tombigbee rivers in Alabama (Choctaw, Mobile, and Washington counties), Mississippi, and Louisiana. Eastern populations were elevated to a candidate for protection under the federal Endangered Species Act 27 July 2011.
- 15 Possible Occurrence.
- 16 Historic occurrence
- 17 Historic Occurrence

**USFWS Designated Critical Habitat in Mobile County, Alabama**

<b>Scientific Name</b>	<b>Common Name</b>	<b>Global Rank</b>	<b>State Rank</b>	<b>Federal Status</b>	<b>State Status</b>	<b>State Priority</b>
<u>Birds</u> <i>Charadrius melodus</i>	Piping Plover	G3	S1N	LE, LT	SP	P1

Location: Coastal islands.

[Return to Top](#)

Last Updated: May 18, 2011



MISSISSIPPI  
DEPARTMENT OF WILDLIFE, FISHERIES, AND PARKS

Sam Polles, Ph.D.  
Executive Director

February 10, 2012

Marc Hess  
SWCA Environmental Consultants  
7255 Langtry Street  
Suite 100  
Houston, TX 77040

Re: Potential Utility Line  
Hurley, Big Point, Pascagoula North, Grand Bay SW Quads **R# 8807**  
Jackson County, Mississippi

To Whom It May Concern,

In response to your request for information dated February 1, 2012, we have searched our database for occurrences of state or federally listed species and species of special concern that occur within 2 miles of the site of the proposed project. Please find our concerns and recommendations below.

Scientific Name	Common Name	Federal Status	State Rank	State Status	County	Quad Name	Alt Quad Name
<i>Rana sevens</i>	Dark Gopher Frog	LE	S1	LE	Jackson	BIG POINT	HURLEY SW
<i>Lobelia boykinii</i>	Boykin's Lobelia		S1		Jackson	BIG POINT	HURLEY SW
<i>Rhynchospora tracyi</i>	Tracy's Beakrush		S1		Jackson	BIG POINT	HURLEY SW
<i>Stylisma aquatica</i>	Water Southern Morning-glory		S1		Jackson	BIG POINT	HURLEY SW
<i>Pieris phillyreifolia</i>	Climbing Fetter-bush		S1		Jackson	BIG POINT	HURLEY SW
<i>Dichanthelium wrightianum</i>	Wright's Witchgrass		S1S2		Jackson	BIG POINT	HURLEY SW
<i>Chamaecyparis thyoides</i>	Atlantic White Cedar		S2		Jackson	BIG POINT	HURLEY SW
<i>Hypericum myrtifolium</i>	Myrtle-leaved St. Johnswort		S2		Jackson	BIG POINT	HURLEY SW
<i>Gopherus polyphemus</i>	Gopher Tortoise	PS:LT	S2	LE	Jackson	BIG POINT	HURLEY SW
Wet slash (longleaf) pine savanna/forest/flatwoods	Longleaf/slash Pine - Swamp Titi - Giant Cane		S2		Jackson	BIG POINT	HURLEY SW
Grady pond swamp forest	Bald/pond Cypress - Sweetbay Magnolia - Swamp Blackgum		S2		Jackson	BIG POINT	HURLEY SW
<i>Notropis chalybaeus</i>	Ironcolor Shiner		S2	LE	Jackson	BIG POINT	HURLEY SW
<i>Pinguicula planifolia</i>	Chapman's Butterwort		S2		Jackson	BIG POINT	HURLEY SW

Rhododendron austrinum	Florida Flame Azalea		S2S3		Jackson	BIG POINT	HURLEY SW
Pseudemys alabamensis	Alabama Redbelly Turtle	LE	S1	LE	Jackson	GRAND BAY SW	
Lycium carolinianum	Carolina Wolf-berry		S1?		Jackson	GRAND BAY SW	
Sageretia minutiflora	Tiny-leaved Buckthorn		S2		Jackson	GRAND BAY SW	
Juniperus virginiana var. silicicola	Southern Red Cedar		S2		Jackson	GRAND BAY SW	
Stylisma aquatica	Water Southern Morning-glory		S1		Jackson	HURLEY	HURLEY NW
Sarracenia purpurea var. burkii	Rose Pitcherplant		S1		Jackson	HURLEY	HURLEY NW
Quaking bog	Bog Spicebush - Coastal Sedge - Sphagnum		S1		George	HURLEY	HURLEY NW
Cambarellus diminutus	Least Crayfish		S2		Jackson	HURLEY	HURLEY NW
Wet slash (longleaf) pine savanna/forest/wetwoods	Longleaf/slash Pine - Swamp Titi - Giant Cane		S2		Jackson	HURLEY	HURLEY NW
Chamaecyparis thyooides	Atlantic White Cedar		S2		Jackson	HURLEY	HURLEY NW
Fallicambarus burrisi	Burris' Burrowing Crawfish		S2		Jackson	HURLEY	HURLEY NW
Carex verrucosa	Wartysedge		S2		Jackson	HURLEY	HURLEY NW
Pitcher plant flat/bog/wet savanna	Yellow Trumpets/parrot Pitcherplant - Beaksedge - Stoke's Aster - Goldencrest - Flat Pipewort		S2		Jackson	HURLEY	HURLEY NW
Grady pond swamp forest	Bald/pond Cypress - Sweetbay Magnolia - Swamp Blackgum		S2		Jackson	HURLEY	HURLEY NW
Gopherus polyphemus	Gopher Tortoise	PS:LT	S2	LE	Jackson	HURLEY	HURLEY NW
Platanthera blephariglottis	Large White Fringed Orchid		S2		George	HURLEY	HURLEY NW
Lachnocaulon digynum	Pineland Bogbutton		S2		George	HURLEY	HURLEY NW
Xyris drummondii	Drummond's Yellow-eyed Grass		S2		George	HURLEY	HURLEY NW
Pinguicula planifolia	Chapman's Butterwort		S2		George	HURLEY	HURLEY NW
Lindera subcoriacea	Bog Spice Bush		S2		George	HURLEY	HURLEY NW
Carex exilis	Coast Sedge		S2		George	HURLEY	HURLEY NW
Panicum nudicaule	Naked-stemmed Panic Grass		S2		George	HURLEY	HURLEY NW
Thryomanes bewickii	Bewick's Wren		S2B,S3 N	LE	Jackson	HURLEY	HURLEY NW
Calopogon barbatus	Bearded Grass-pink		S2S3		Jackson	HURLEY	HURLEY NW
Rhododendron austrinum	Florida Flame Azalea		S2S3		Jackson	HURLEY	HURLEY NW
Sarracenia leucophylla	Crimson Pitcher-plant		S2S3		Jackson	HURLEY	HURLEY NW
Dalea carnea var. gracilis	Pine Barrens Prairie Clover		S2S3		George	HURLEY	HURLEY NW
Melanthium virginicum	Virginia Bunchflower		S2S3		George	HURLEY	HURLEY NW
Rhynchospora stenophylla	Chapman Beakrush		S2S3		George	HURLEY	HURLEY NW
Eriocaulon texense	Texas Pipewort		S2S3		George	HURLEY	HURLEY NW
Eustoma exaltatum	Tall Prairie-gentain		S1		Jackson	PASCAGOUL A NORTH	
Pseudemys alabamensis	Alabama Redbelly Turtle	LE	S1	LE	Jackson	PASCAGOUL A NORTH	
Chamaecyparis thyooides	Atlantic White Cedar		S2		Jackson	PASCAGOUL A NORTH	
Haliaeetus leucocephalus	Bald Eagle	PS	S2B,S2 N		Jackson	PASCAGOUL A NORTH	

Sabatia bartramii	Bartram's Rose-gentian		S2		Jackson	PASCAGOUL A NORTH
Andropogon capillipes	Chalky Bluestem		S1S2		Jackson	PASCAGOUL A NORTH
Agalinis aphylla	Coastal Plain False-foxglove		S2S3		Jackson	PASCAGOUL A NORTH
Polygala crenata	Crenate Milkwort		S1S2		Jackson	PASCAGOUL A NORTH
Ilex cassine	Dahoon Holly		S2		Jackson	PASCAGOUL A NORTH
Andropogon gyrans var. stenophyllus	Elliott's Bluestem (Var.2)		S1S2		Jackson	PASCAGOUL A NORTH
Spiranthes longilabris	Giant Spiral Ladies'-tresses		S2		Jackson	PASCAGOUL A NORTH
Epidendrum conopseum	Green-fly Orchid		S2		Jackson	PASCAGOUL A NORTH
Nerodia clarkii clarkii	Gulf Salt Marsh Snake		S2?		Jackson	PASCAGOUL A NORTH
Acipenser oxyrinchus desotoi	Gulf Sturgeon	LT	S1	LE	Jackson	PASCAGOUL A NORTH
Malaclemys terrapin pileata	Mississippi Diamondback Terrapin		S2		Jackson	PASCAGOUL A NORTH
Hypericum myrtifolium	Myrtle-leaved St. Johnswort		S2		Jackson	PASCAGOUL A NORTH
Dalea carnea var. gracilis	Pine Barrens Prairie Clover		S2S3		Jackson	PASCAGOUL A NORTH
Scleria reticularis	Reticulated Nutrush		S1		Jackson	PASCAGOUL A NORTH
Juniperus virginiana var. silicicola	Southern Red Cedar		S2		Jackson	PASCAGOUL A NORTH
Shell midden shrub/woodland	Southern Redcedar - False Buckthorn		S1		Jackson	PASCAGOUL A NORTH
Elanoides forficatus	Swallow-tailed Kite		S2B		Jackson	PASCAGOUL A NORTH
Agalinis filicaulis	Thin Stemmed False-foxglove		S2?		Jackson	PASCAGOUL A NORTH
Sageretia minutiflora	Tiny-leaved Buckthorn		S2		Jackson	PASCAGOUL A NORTH
Cladium mariscoides	Twig Rush		S1		Jackson	PASCAGOUL A NORTH

Portions of this project site may be located in suitable habitat for the federally threatened and state endangered Gopher Tortoise (*Gopherus polyphemus*). There are also documented occurrences of gopher tortoises within the proposed project site. Therefore, we recommend that gopher tortoise burrow surveys be conducted within twenty feet of the project site (particularly in well-drained sandy substrates). If tortoise burrows are found, the following individuals should be contacted: Kathy Shelton (krshelton64@gmail.com) with the MS Dept. of Wildlife, Fisheries, & Parks and David Felder (601-321-1131) of the U.S. Fish and Wildlife Service.

Please feel free to contact us if we can provide any additional information, resources, or assistance that will help minimize negative impacts to this area. We are happy to work with you to ensure that our state's precious natural heritage is conserved and preserved for future Mississippians.

Sincerely,



Joelle Carney, Database Manager/Biologist  
Mississippi Natural Heritage Program  
(601) 576-6000

The Mississippi Natural Heritage Program (MNHP) has compiled a database that is the most complete source of information about Mississippi's rare, threatened, and endangered plants, animals, and ecological communities. The quantity and quality of data collected by MNHP are dependent on the research and observations of many individuals and organizations. In many cases, this information is not the result of comprehensive or site-specific field surveys; most natural areas in Mississippi have not been thoroughly surveyed and new occurrences of plant and animal species are often discovered. Heritage reports summarize the existing information known to the MNHP at the time of the request and cannot always be considered a definitive statement on the presence, absence or condition of biological elements on a particular site.

AS REQUIRED BY THE FREEDOM OF INFORMATION ACT (FOIA) THIS FILE IS BEING MADE AVAILABLE  
ONLINE BECAUSE THE MOBILE DISTRICT FOIA OFFICE HAS RECEIVED MORE THAN THREE (3) REQUESTS  
FOR SAME. ANY QUESTIONS ABOUT THE FOIA PROCESS MUST BE DIRECTED TO OUR FOIA OFFICES.  
FOIA-SAM@usace.army.mil

---

---

## **Appendix B**

### **Gopher Tortoise Survey Maps**

---

---

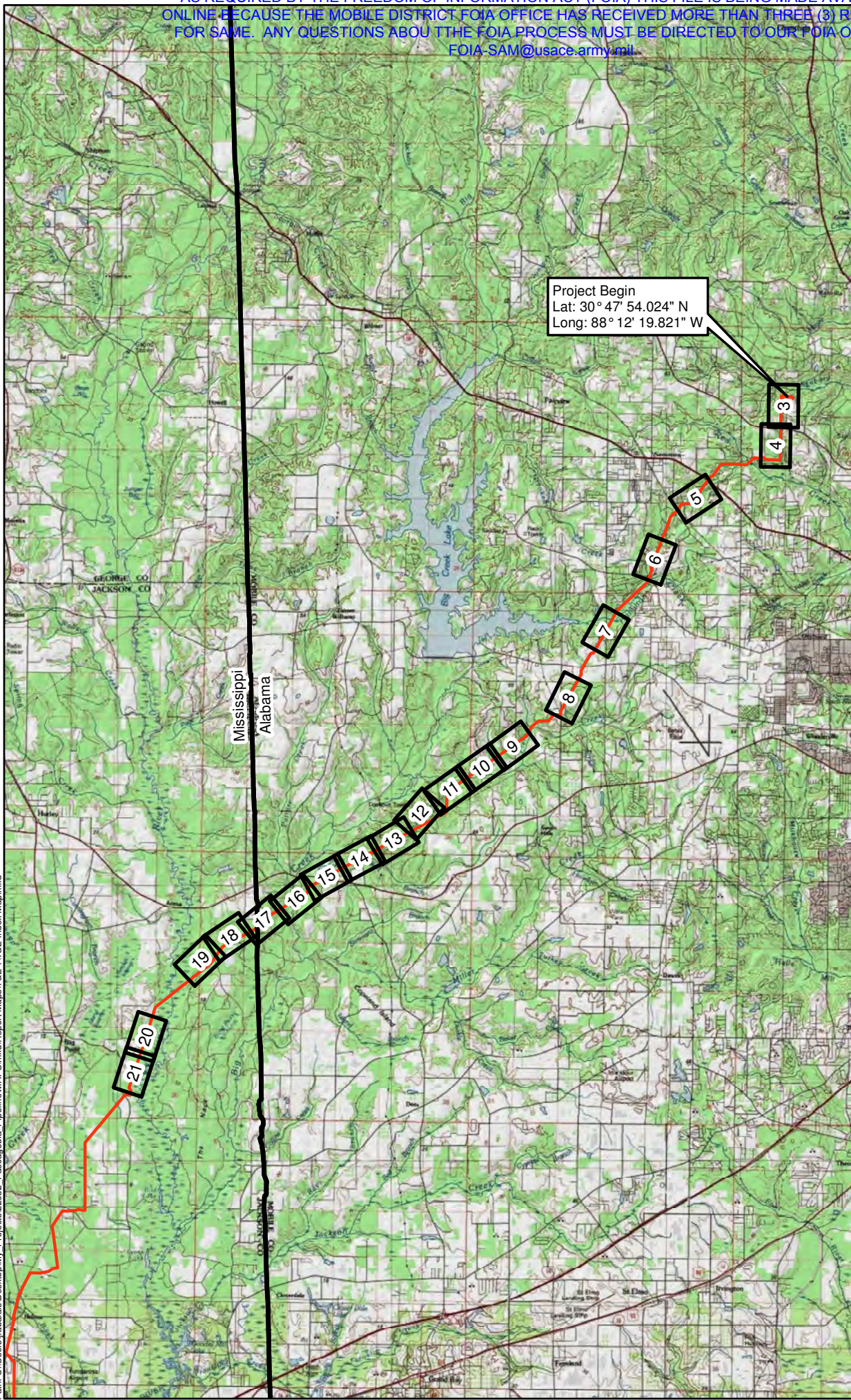
**PLAINS  
 SOUTHCAP L.L.C.**

**SHEET INDEX  
 T & E SURVEY  
 41-MILE-LONG TEN-MILE FACILITY  
 PIPELINE PROJECT**

**JACKSON COUNTY, MS  
 MOBILE COUNTY, AL**

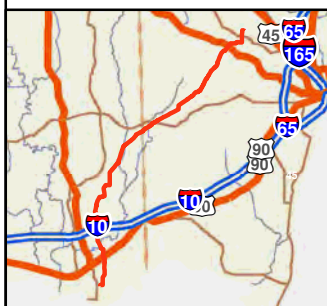
Sheet 2 of 22

Project Begin  
 Lat: 30° 47' 54.024" N  
 Long: 88° 12' 19.821" W

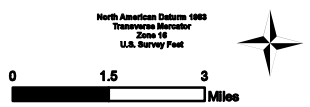


**LEGEND**

— Project Centerline



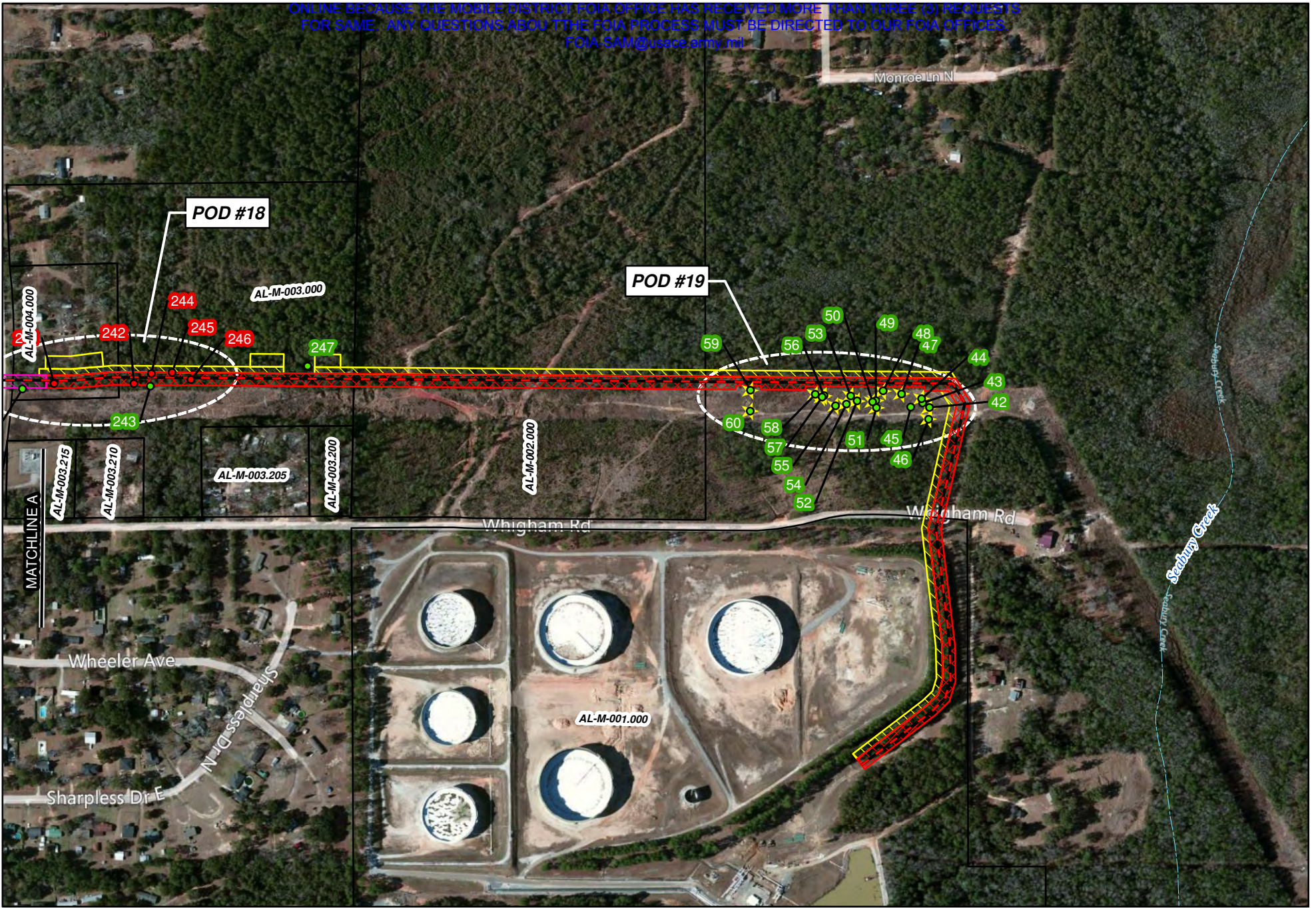
Background: USA Topo maps (ESRI Basemap)  
 Topographic Quad Name:  
 Mapper: JR  
 Approved By: EM  
 SWCA Project No: 22832  
 Date Produced: 08/24/2012  
 Revision Date:



**SWCA, Environmental Consultants**  
 7255 Langley, Suite 100  
 Houston, Texas 77040  
 (713) 834-8900 phone  
 (713) 834-8906 fax  
 www.swca.com







Path: C:\Users\abalais\Documents\My Projects\22832\_Pascagoula\_Pipeline\MAPS\mxd\Report Maps\T&E\_TIT&E Plan Views.mxd



**PLAINS SOUTHCAP L.L.C.  
T & E MAPS  
41-MILE-LONG TEN-MILE FACILITY TO  
PASCAGOULA PIPELINE PROJECT  
MOBILE COUNTY, AL**

Legend			
	Centerline		Active Burrow
	Permanent RoW		Burrow, Inside Work Corridor
	Temporary RoW		Burrow, Outside Work Corridor
	Additional Workspace		Streams
	HDD RoW		

COMMENT:  
USACE MOBILE DISTRICT

Background: Bing Maps Hybrid (2012)  
Mapper: JR  
Approved By: EM  
SWCA Project No: 22832  
Date Produced: 8/24/2012  
Revision Date:

Coordinate System: NAD 1983 UTM Zone 16N  
Units: Feet US



Path: C:\Users\abalais\Desktop\My\_Projects\22932\_Pascagoula\_Pipeline\MAPS\mxd\Report Maps\T&E\_11T&E\_Plan\_VIEWS.mxd



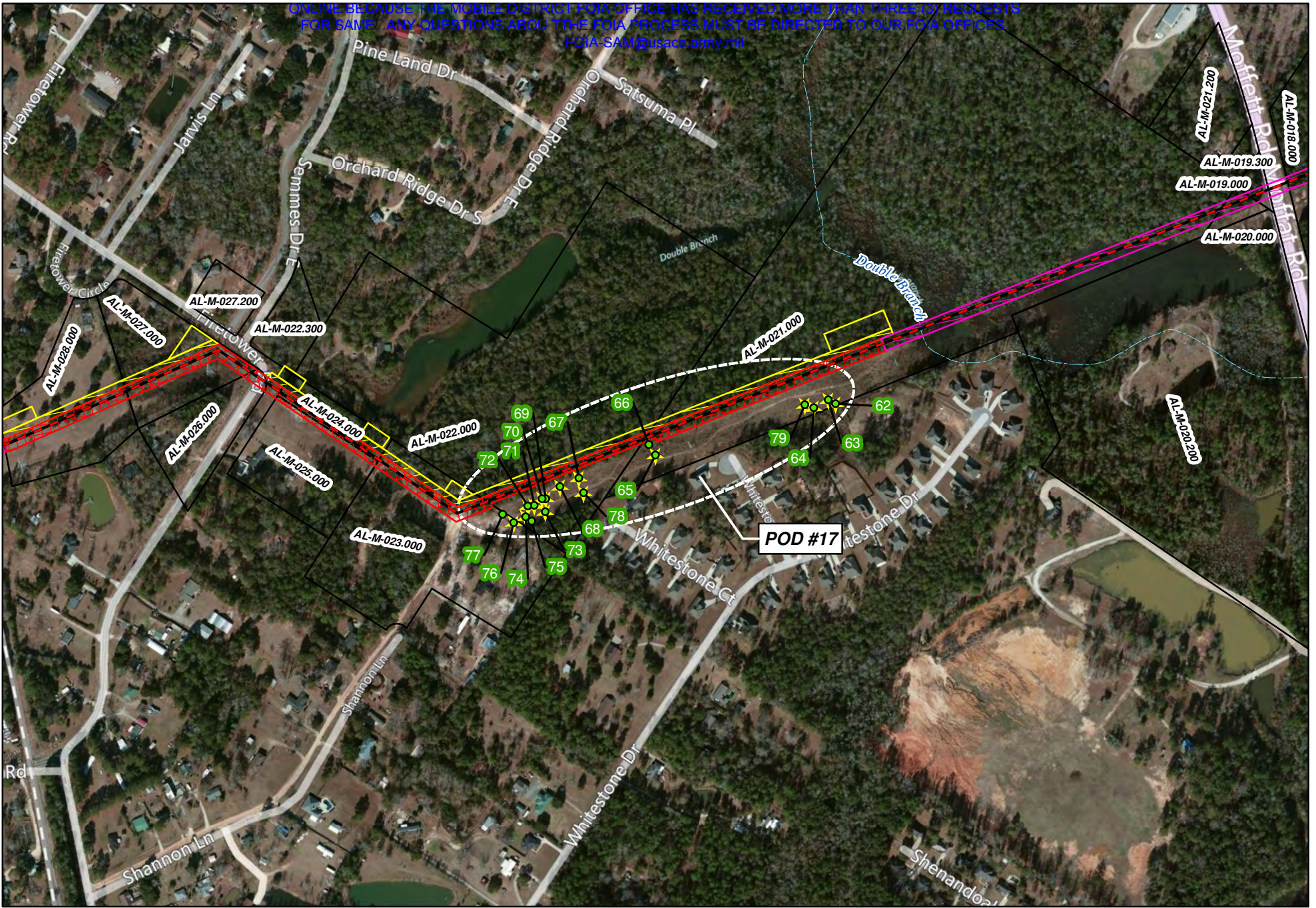
**PLAINS SOUTHCAP L.L.C.  
T & E MAPS  
41-MILE-LONG TEN-MILE FACILITY TO  
PASCAGOULA PIPELINE PROJECT  
MOBILE COUNTY, AL**

Legend		
Centerline	Permanent RoW	Active Burrow
Temporary RoW	Burrow, Inside Work Corridor	Burrow, Outside Work Corridor
Additional Workspace	Streams	
HDD RoW		

COMMENT:  
USACE MOBILE DISTRICT

Background: Bing Maps Hybrid (2012)  
Mapper: JR  
Approved By: EM  
SWCA Project No: 22932  
Date Produced: 8/24/2012  
Revision Date:

Coordinate System: NAD 1983 UTM Zone 16N  
Units: Feet US



Path: C:\Users\abalais\Desktop\My\_Projects\22932\_Pascagoula\_Pipeline\MAPS\mxd\Report Maps\T&E\T&E Plan Views.mxd



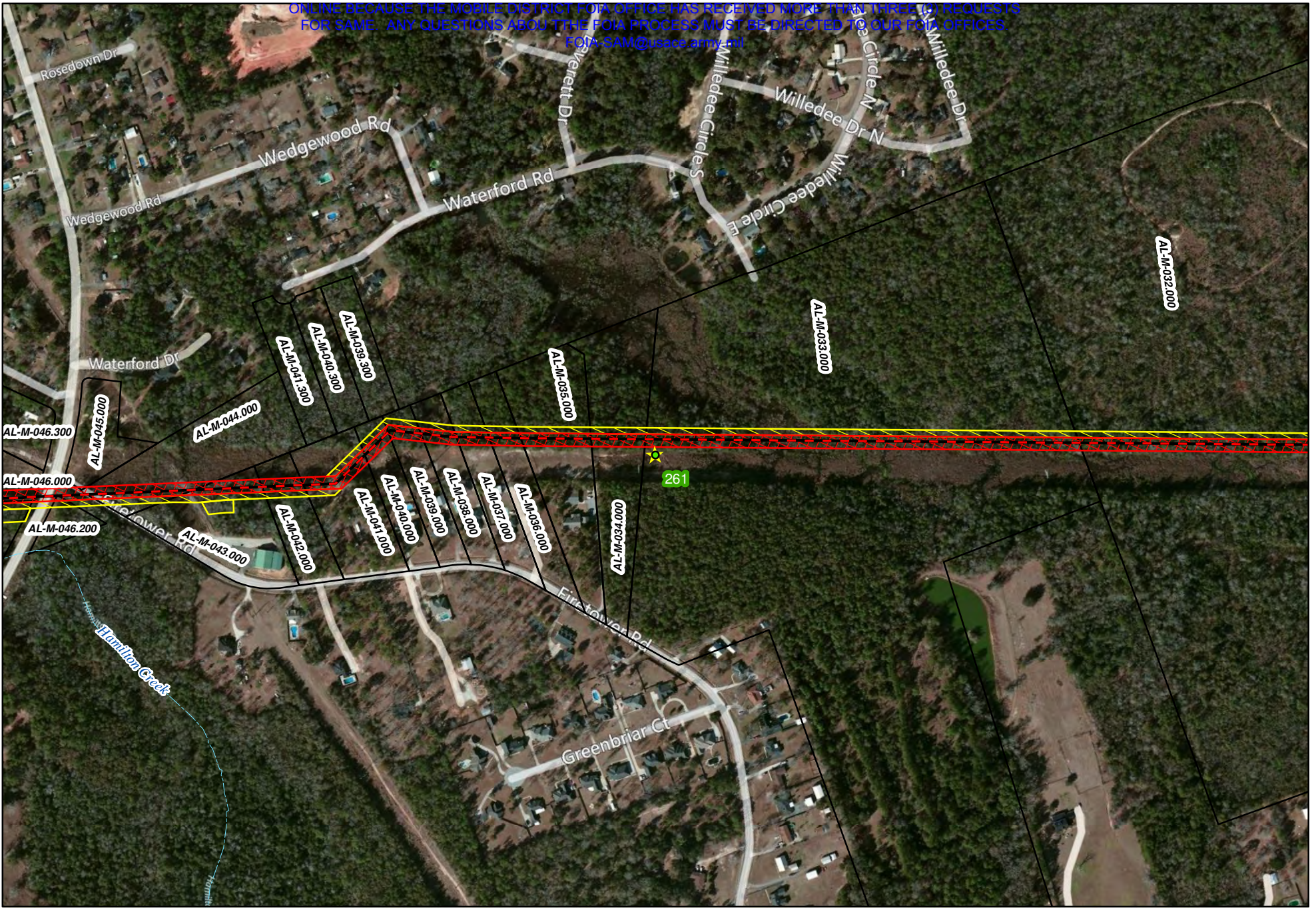
**PLAINS SOUTHCAP L.L.C.  
T & E MAPS  
41-MILE-LONG TEN-MILE FACILITY TO  
PASCAGOULA PIPELINE PROJECT  
MOBILE COUNTY, AL**

Legend					
	Centerline		HDD RoW		Active Burrow
	Permanent RoW		Burrow, Inside Work Corridor		Burrow, Outside Work Corridor
	Temporary RoW		Streams		
	Additional Workspace				

COMMENT:  
USACE MOBILE DISTRICT



Background: Bing Maps Hybrid (2012)  
Mapper: JR  
Approved By: EM  
SWCA Project No: 22932  
Date Produced: 8/24/2012  
Revision Date:  
0 250 500 Feet  
Coordinate System: NAD 1983 UTM Zone 16N  
Units: Foot US



Path: C:\Users\abalais\desktop\My\_Projects\22932\_Pascagoula\_Pipeline\MAPS\mxd\Report Maps\T&E\T&E Plan Views.mxd



**PLAINS SOUTHCAP L.L.C.  
T & E MAPS  
41-MILE-LONG TEN-MILE FACILITY TO  
PASCAGOULA PIPELINE PROJECT  
MOBILE COUNTY, AL**

Legend	
	Centerline
	Permanent RoW
	Temporary RoW
	Additional Workspace
	HDD RoW
	Burrow, Inside Work Corridor
	Burrow, Outside Work Corridor
	Streams
	Active Burrow

COMMENT:  
USACE MOBILE DISTRICT

Background: Bing Maps Hybrid (2012)  
Mapper: JR  
Approved By: EM  
SWCA Project No: 22932  
Date Produced: 8/24/2012  
Revision Date:

Coordinate System: NAD 1983 UTM Zone 16N  
Units: Feet US



Path: C:\Users\abalais\desktop\My\_Projects\22932\_Pascagoula\_Pipeline\MAPS\mxd\Report Maps\T&E\T&E Plan Views.mxd



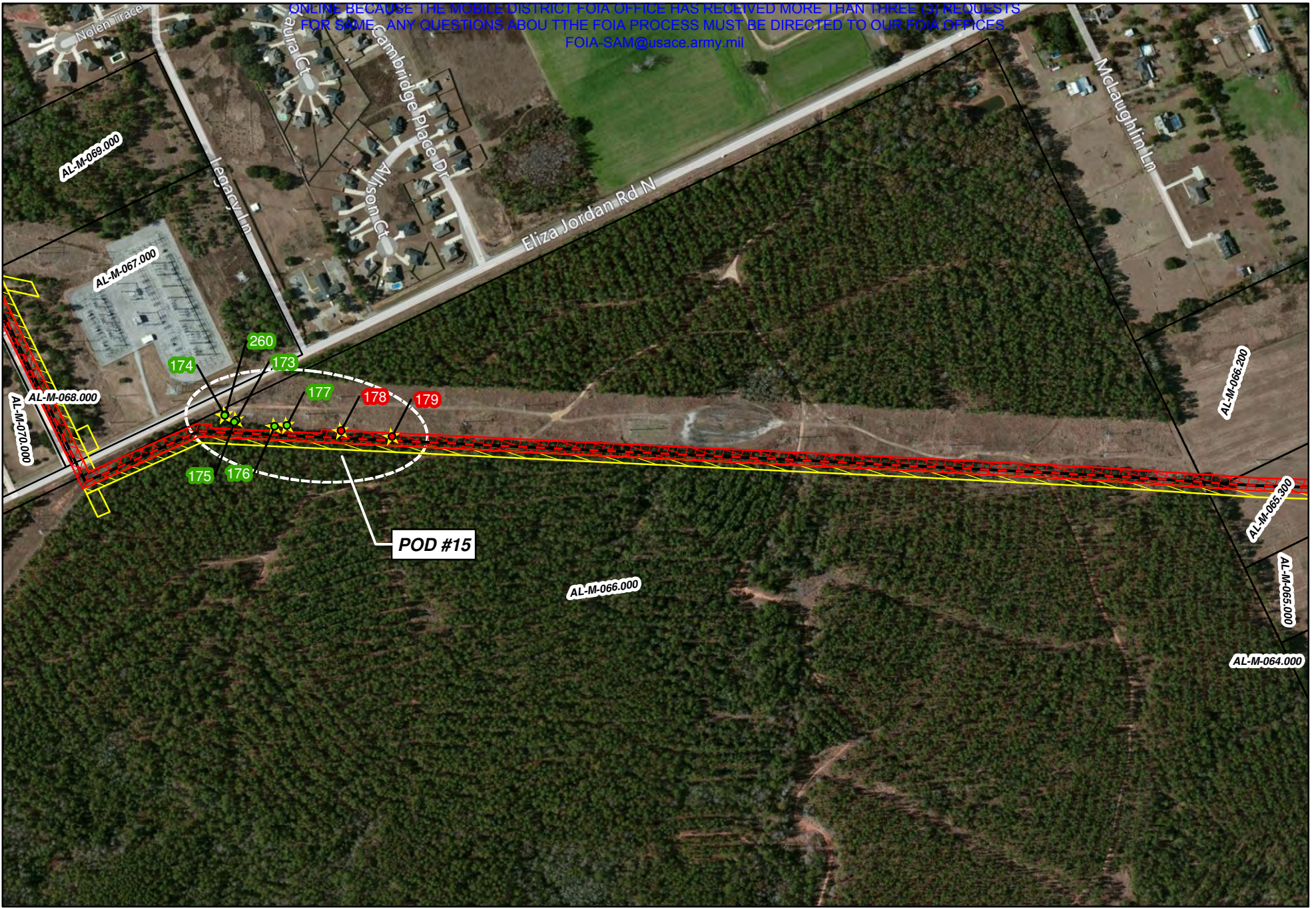
**PLAINS SOUTHCAP L.L.C.  
T & E MAPS  
41-MILE-LONG TEN-MILE FACILITY TO  
PASCAGOULA PIPELINE PROJECT  
MOBILE COUNTY, AL**

Legend	
Centerline	HDD RoW
Permanent RoW	Burrow, Inside Work Corridor
Temporary RoW	Burrow, Outside Work Corridor
Additional Workspace	Streams
	Active Burrow

COMMENT:  
USACE MOBILE DISTRICT

Background: Bing Maps Hybrid (2012)  
Mapper: JR  
Approved By: EM  
SWCA Project No: 22932  
Date Produced: 8/24/2012  
Revision Date:

Coordinate System: NAD 1983 UTM Zone 16N  
Units: Feet US



Path: C:\Users\abalas\desktop\My\_Projects\22932\_Pascagoula\_Pipeline\MAPS\mxd\Report Maps\T&E\T&E Plan Views.mxd



Sheet 8 of 22

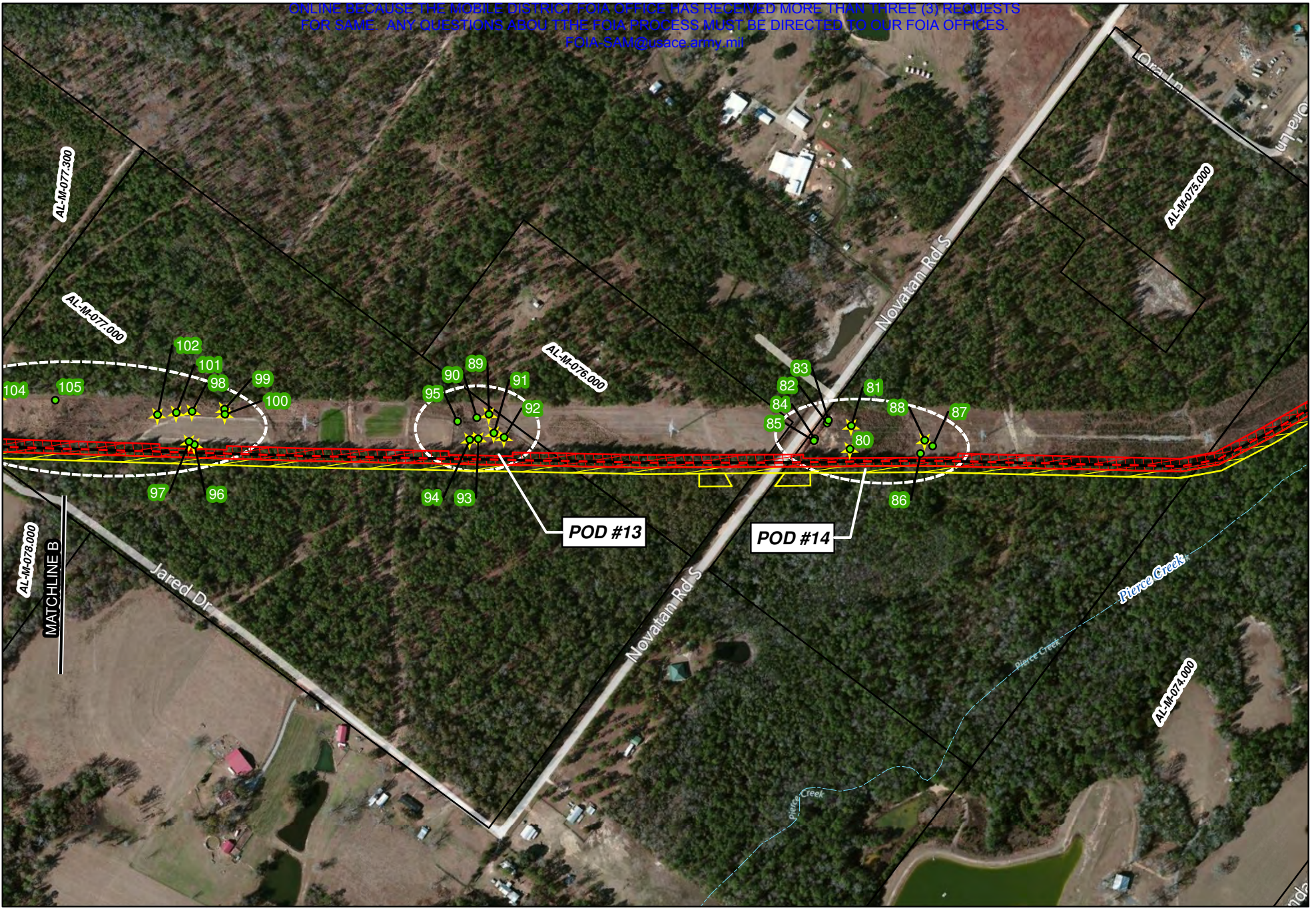
**PLAINS SOUTHCAP L.L.C.  
T & E MAPS  
41-MILE-LONG TEN-MILE FACILITY TO  
PASCAGOULA PIPELINE PROJECT  
MOBILE COUNTY, AL**

Legend		
Centerline	HDD RoW	Active Burrow
Permanent RoW	Burrow, Inside Work Corridor	Burrow, Outside Work Corridor
Temporary RoW	Streams	
Additional Workspace		

COMMENT:  
USACE MOBILE DISTRICT

Background: Bing Maps Hybrid (2012)  
Mapper: JR  
Approved By: EM  
SWCA Project No: 22932  
Date Produced: 8/24/2012  
Revision Date:

Coordinate System: NAD 1983 UTM Zone 16N  
Units: Feet US



Path: C:\Users\abalais\desktop\My\_Projects\22932\_Pascagoula\_Pipeline\MAPS\mxd\Report Maps\T&E\_11T&E Plan Views.mxd



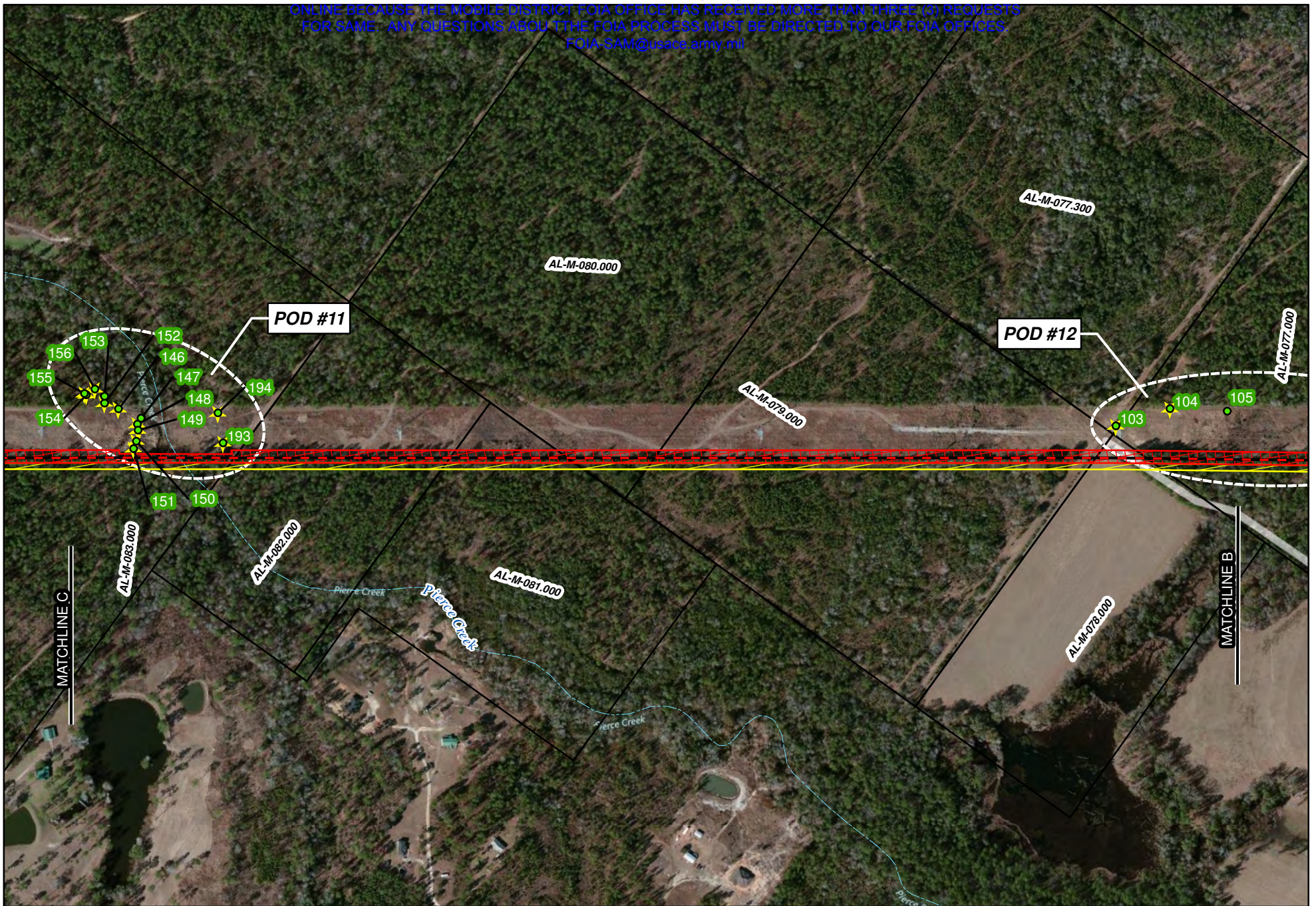
**PLAINS SOUTHCAP L.L.C.  
T & E MAPS  
41-MILE-LONG TEN-MILE FACILITY TO  
PASCAGOULA PIPELINE PROJECT  
MOBILE COUNTY, AL**

Legend		
Centerline	HDD RoW	Active Burrow
Permanent RoW	Burrow, Inside Work Corridor	
Temporary RoW	Burrow, Outside Work Corridor	
Additional Workspace	Streams	

COMMENT:  
USACE MOBILE DISTRICT



Background: Bing Maps Hybrid (2012)  
Mapper: JR  
Approved By: EM  
SWCA Project No: 22932  
Date Produced: 8/24/2012  
Revision Date:  
0 250 500 Feet  
Coordinate System: NAD 1983 UTM Zone 16N  
Units: Foot US



Path: C:\Users\jrabalais\Desktop\My\_Pipeline\MAPS\mxd\Report Maps\T&E\_11T&E Plan Views.mxd



Sheet 10 of 22

**PLAINS SOUTHCAP L.L.C.  
T & E MAPS  
41-MILE-LONG TEN-MILE FACILITY TO  
PASCAGOULA PIPELINE PROJECT  
MOBILE COUNTY, AL**

**Legend**

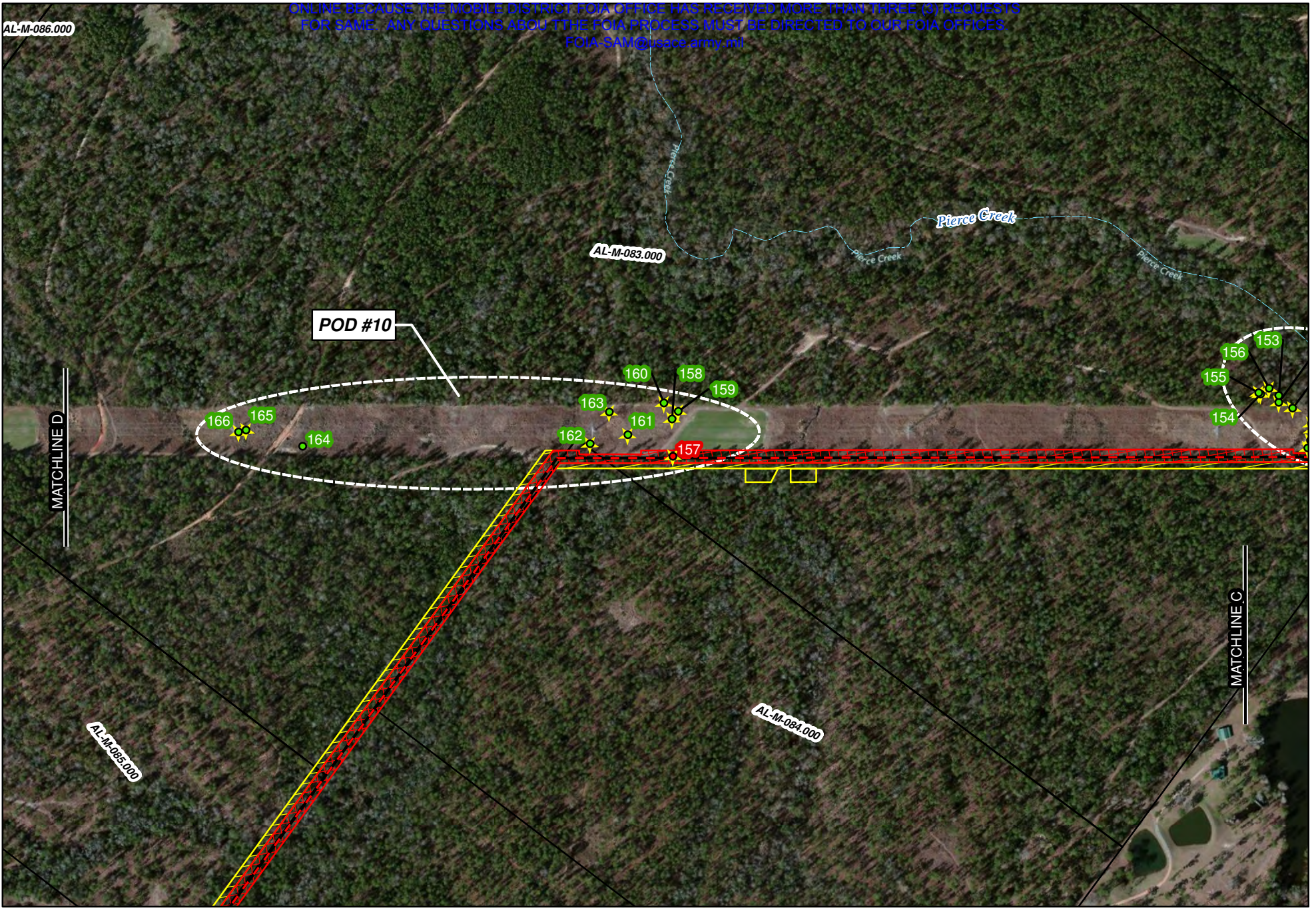
- Centerline
- Permanent RoW
- Temporary RoW
- Additional Workspace
- HDD RoW
- Burrow, Inside Work Corridor
- Burrow, Outside Work Corridor
- Streams
- Active Burrow

COMMENT:  
USACE MOBILE DISTRICT



Background: Bing Maps Hybrid (2012)  
Mapper: JR  
Approved By: EM  
SWCA Project No: 22332  
Date Produced: 8/24/2012  
Revision Date:  
0 250 500 Feet  
Coordinate System: NAD 1983 UTM Zone 16N  
Units: Feet US





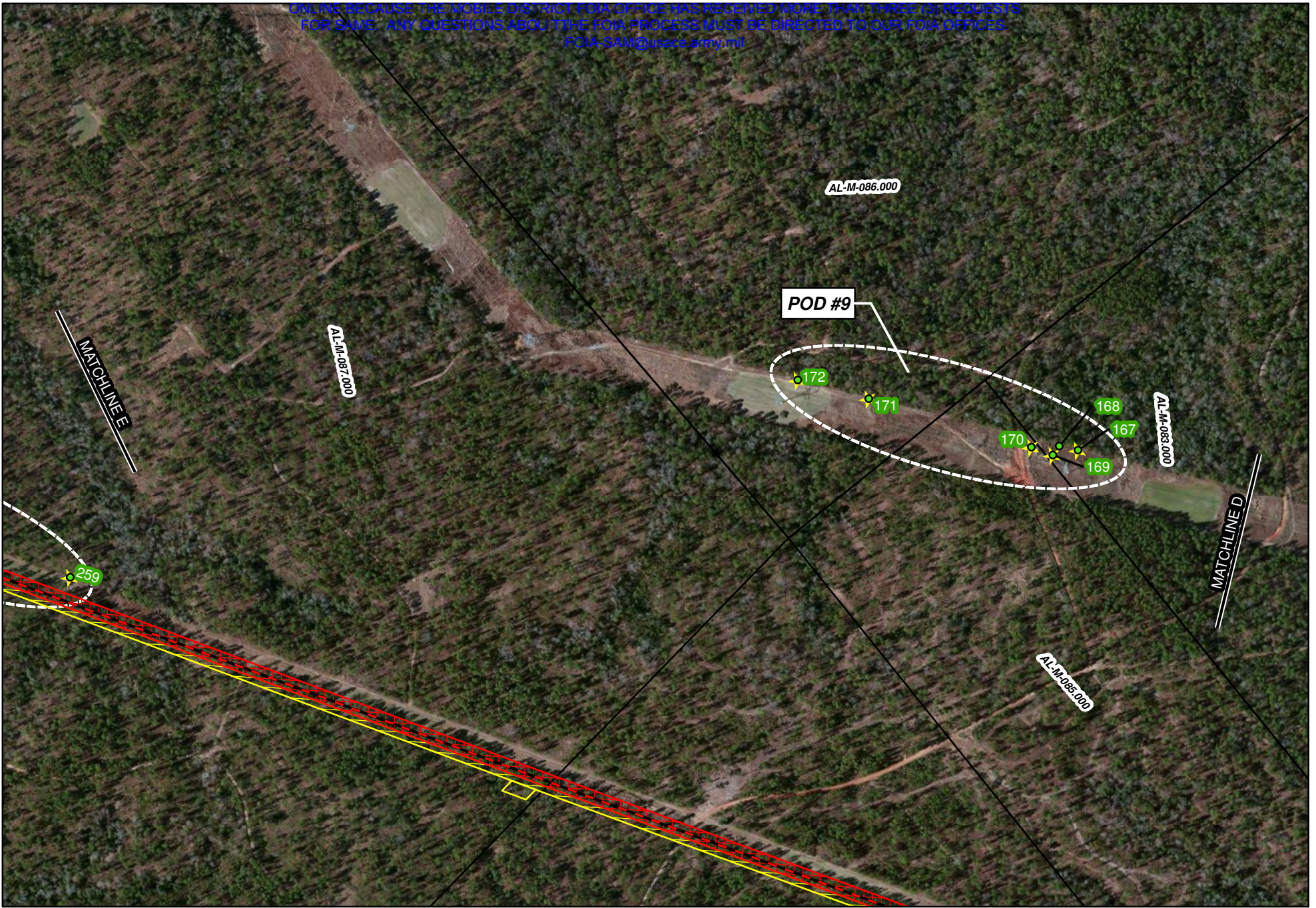
**PLAINS SOUTHCAP L.L.C.  
T & E MAPS  
41-MILE-LONG TEN-MILE FACILITY TO  
PASCAGOULA PIPELINE PROJECT  
MOBILE COUNTY, AL**

Legend			
	Centerline		Active Burrow
	Permanent RoW		Burrow, Inside Work Corridor
	Temporary RoW		Burrow, Outside Work Corridor
	Additional Workspace		Streams
	HDD RoW		

COMMENT:  
USACE MOBILE DISTRICT



Background: Bing Maps Hybrid (2012)  
Mapper: JR  
Approved By: EM  
SWCA Project No: 22932  
Date Produced: 8/24/2012  
Revision Date:  
0 250 500 Feet  
Coordinate System: NAD 1983 UTM Zone 16N  
Units: Foot US



Path: C:\Users\jrabalais\Desktop\My\_Projects\22932\_Pascagoula\_Pipeline\MAPS\mxd\Report Maps\T&E\T&E Plan Views.mxd



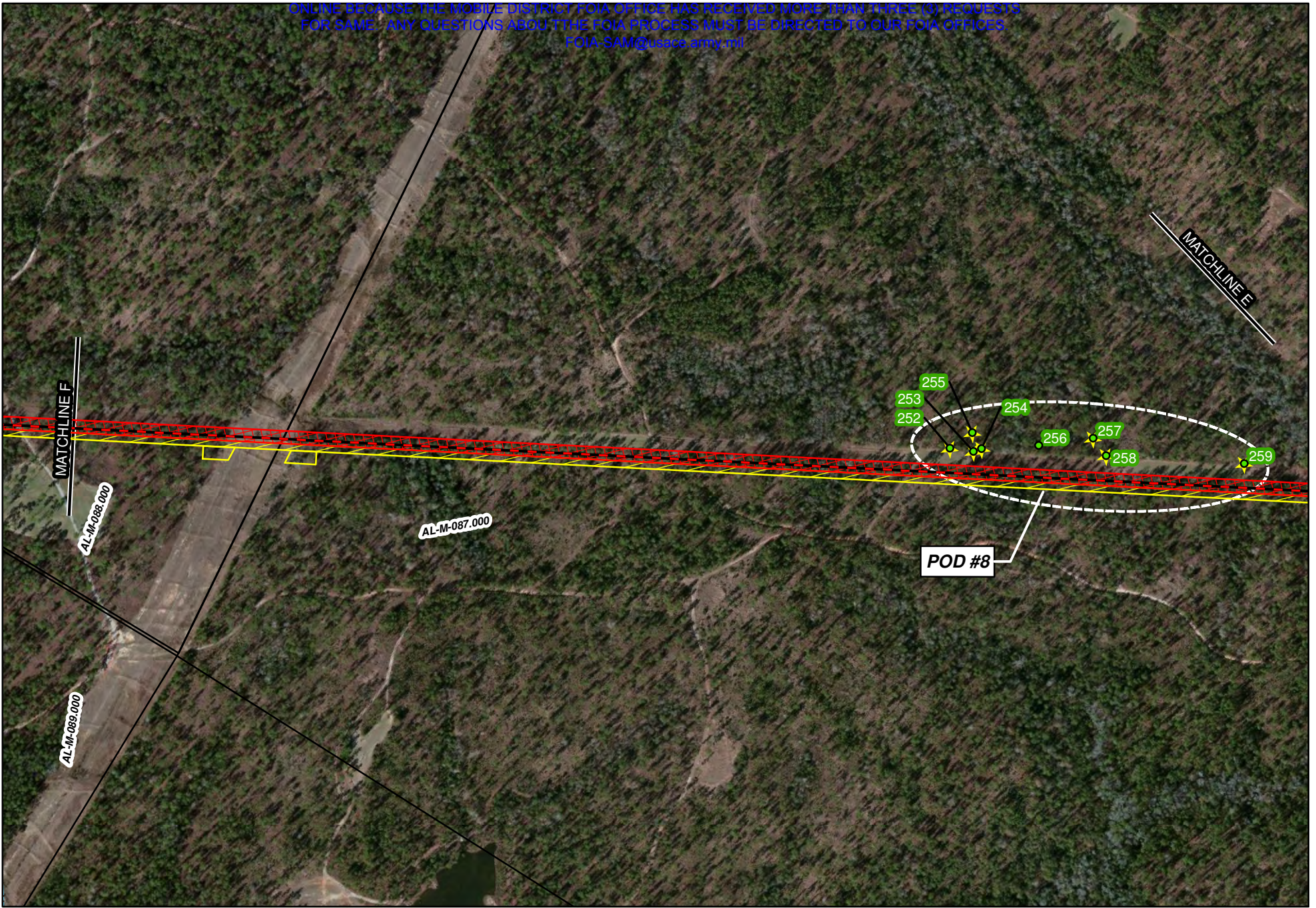
**PLAINS SOUTHCAP L.L.C.  
T & E MAPS  
41-MILE-LONG TEN-MILE FACILITY TO  
PASCAGOULA PIPELINE PROJECT  
MOBILE COUNTY, AL**

Legend	
Centerline	HDD RoW
Permanent RoW	Burrow, Inside Work Corridor
Temporary RoW	Burrow, Outside Work Corridor
Additional Workspace	Streams
	Active Burrow

COMMENT:  
USACE MOBILE DISTRICT

Background: Bing Maps Hybrid (2012)  
Mapper: JR  
Approved By: EM  
SWCA Project No: 22932  
Date Produced: 8/24/2012  
Revision Date:

0 250 500 Feet  
Coordinate System: NAD 1983 UTM Zone 16N  
Units: Feet US



Path: C:\Users\abalais\desktop\My\_Projects\22932\_Pascagoula\_Pipeline\MAPS\mxd\Report Maps\T&E\T&E Plan Views.mxd



Sheet 13 of 22

**PLAINS SOUTHCAP L.L.C.  
T & E MAPS  
41-MILE-LONG TEN-MILE FACILITY TO  
PASCAGOULA PIPELINE PROJECT  
MOBILE COUNTY, AL**

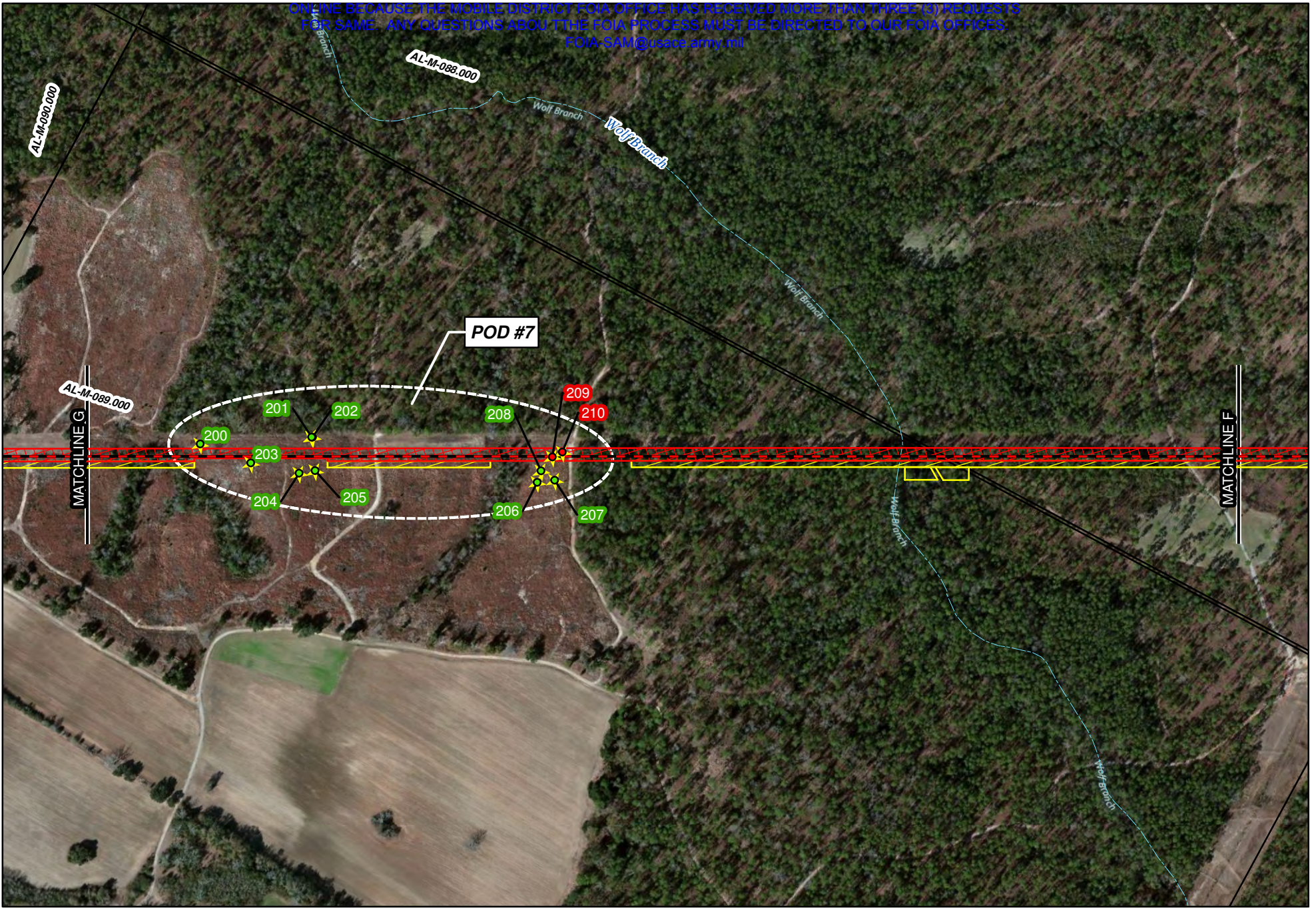
**Legend**

Centerline	HDD RoW	Active Burrow
Permanent RoW	Burrow, Inside Work Corridor	
Temporary RoW	Burrow, Outside Work Corridor	
Additional Workspace	Streams	

COMMENT:  
USACE MOBILE DISTRICT



Background: Bing Maps Hybrid (2012)  
Mapper: JR  
Approved By: EM  
SWCA Project No: 22932  
Date Produced: 8/24/2012  
Revision Date:  
0 250 500 Feet  
Coordinate System: NAD 1983 UTM Zone 16N  
Units: Feet US



Path: C:\Users\abalais\desktop\My\_Pipeline\MAPS\mxd\Report Maps\T&E\_11T&E\_Plan\_VIEWS.mxd



Sheet 14 of 22

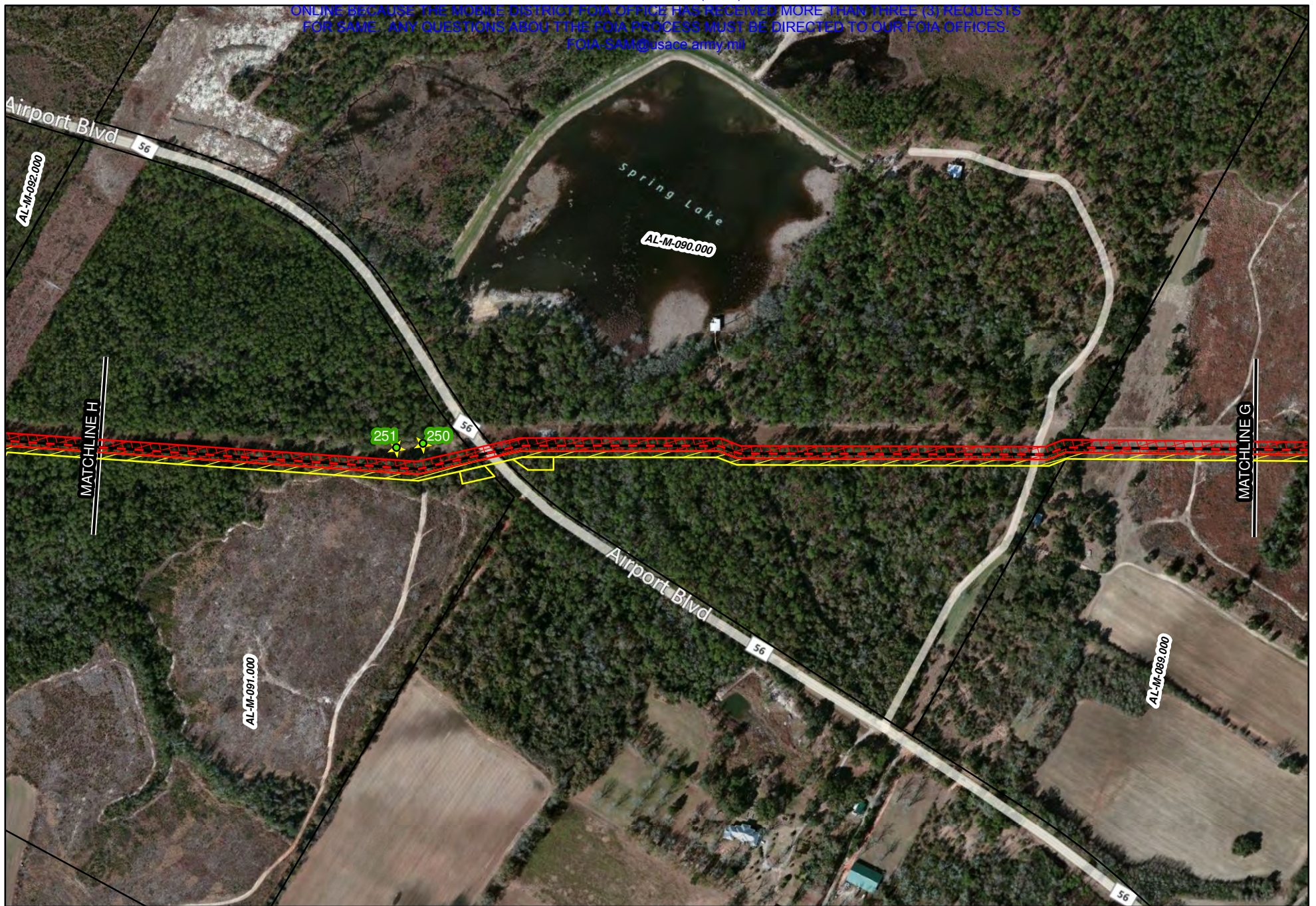
**PLAINS SOUTHCAP L.L.C.  
T & E MAPS  
41-MILE-LONG TEN-MILE FACILITY TO  
PASCAGOULA PIPELINE PROJECT  
MOBILE COUNTY, AL**

Legend		
Centerline	HDD RoW	Active Burrow
Permanent RoW	Burrow, Inside Work Corridor	
Temporary RoW	Burrow, Outside Work Corridor	
Additional Workspace	Streams	

COMMENT:  
USACE MOBILE DISTRICT



Background: Bing Maps Hybrid (2012)  
Mapper: JR  
Approved By: EM  
SWCA Project No: 22932  
Date Produced: 8/24/2012  
Revision Date:  
0 250 500 Feet  
Coordinate System: NAD 1983 UTM Zone 16N  
Units: Feet US



Path: C:\Users\jrabalais\Desktop\My\_Pipeline\MAPS\mxd\Report Maps\T&E\_TIT&E Plan Views.mxd



Sheet 15 of 22

**PLAINS SOUTHCAP L.L.C.  
T & E MAPS  
41-MILE-LONG TEN-MILE FACILITY TO  
PASCAGOULA PIPELINE PROJECT  
MOBILE COUNTY, AL**

**Legend**

- Centerline
- Permanent RoW
- Temporary RoW
- Additional Workspace
- HDD RoW
- Burrow, Inside Work Corridor
- Burrow, Outside Work Corridor
- Streams
- Active Burrow

COMMENT:  
USACE MOBILE DISTRICT



Background: Bing Maps Hybrid (2012)  
Mapper: JR  
Approved By: EM  
SWCA Project No: 22332  
Date Produced: 8/24/2012  
Revision Date:  
0 250 500 Feet  
Coordinate System: NAD 1983 UTM Zone 16N  
Units: Foot US