

**PLAINS SOUTHCAP L.L.C.
PLAN VIEW
41-MILE-LONG TEN-MILE FACILITY TO
PASCAGOULA PIPELINE PROJECT
JACKSON COUNTY, MS**

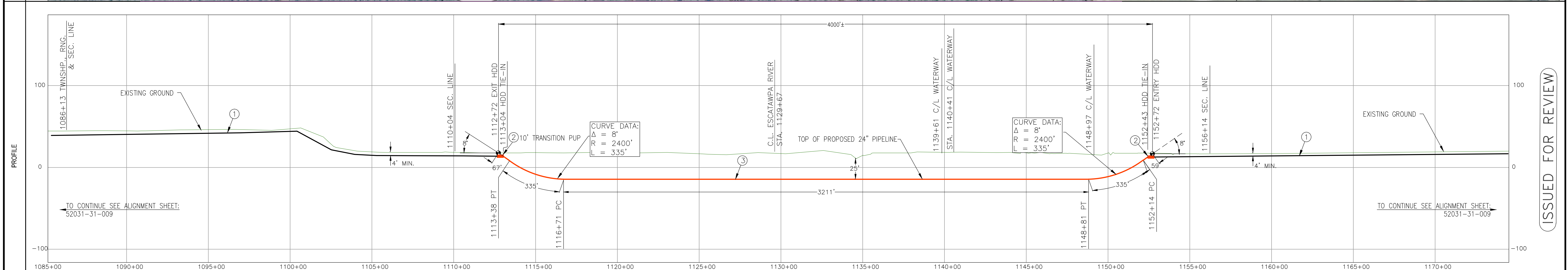
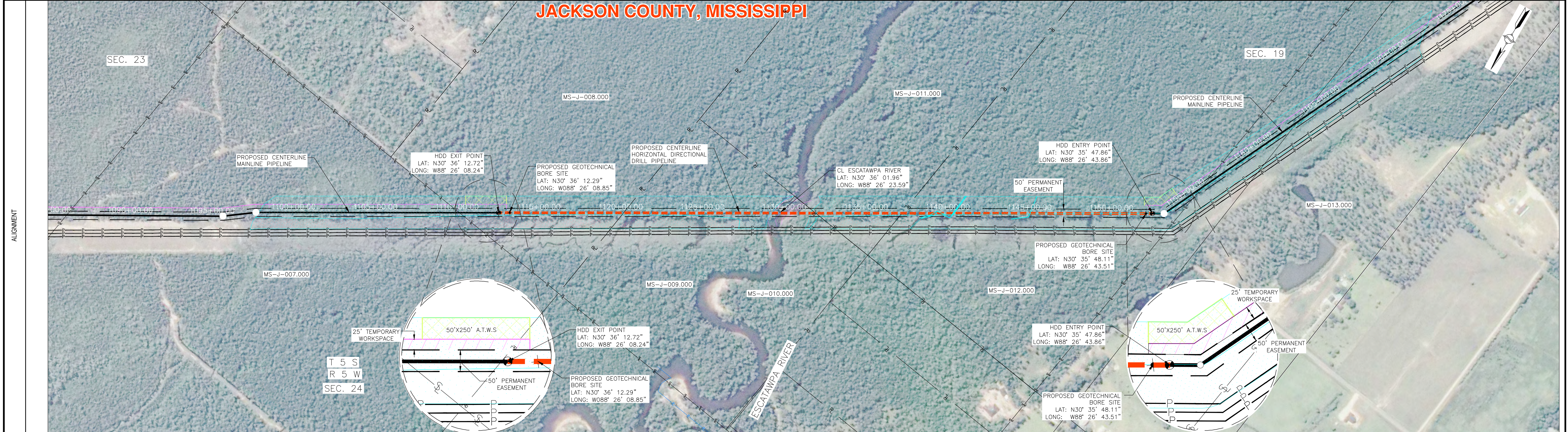
- Centerline
- Permanent RoW
- Temporary RoW
- Additional Workspace
- 200' Survey
- Unsurveyed Areas
- PEM
- PFO
- PSS
- EEM
- Streams
- Sample Point
- Milepost
- HDD Entry/Exit

COMMENT:
USACE MOBILE DISTRICT

Background: Bing Maps Hybrid (2012)
Mapper: JR
Approved By: Preliminary Draft
SWCA Project No: 22332
Date Produced: 8/20/2012
Revision Date:

Coordinate System: NAD 1983 UTM Zone 16N
Units: Feet US

STATIONING	STA. 1086+13 TOWNSHIP., RING. & SEC. LINE	STA. 1095+64 6'59"36" LT.	STA. 1097+68 6'38"15" RT.	STA. 1110+04 SEC. LINE	STA. 1112+72 HDD EXIT STA. 1113+04 HDD TIE-IN	STA. 1129+67 ESCATAWPA RIV.	STA. 1139+61 C/L WATERWAY STA. 1140+41 C/L WATERWAY	STA. 1148+97 C/L WATERWAY	STA. 1152+43 HDD TIE-IN STA. 1152+72 HDD ENTRY STA. 1153+19 34'47.07" LT.	STA. 1156+14 SEC. LINE
------------	---	---------------------------	---------------------------	------------------------	---	-----------------------------	---	---------------------------	---	------------------------



NOTE: THIS DRAWING IS INTENDED TO BE PRINTED AS 22"x34". PLEASE REFER TO GRAPHIC SCALE, AS DRAWING MAY HAVE BEEN REDUCED OR ENLARGED.

<p>1-800-245-4545 www.onecalltexas.com TEXAS ONE CALL SYSTEM</p>	PIPE MATERIAL LIST		MATERIAL LIST		GENERAL NOTES	LEGEND	<table border="1"> <tr> <th>NO.</th> <th>DATE</th> <th>REVISION</th> <th>DRCH</th> </tr> <tr> <td>B</td> <td>08/07/12</td> <td>ISSUED FOR REVIEW</td> <td>DLM/BJO</td> </tr> <tr> <td>A</td> <td>07/09/12</td> <td>ISSUED FOR REVIEW</td> <td>DLM</td> </tr> </table>	NO.	DATE	REVISION	DRCH	B	08/07/12	ISSUED FOR REVIEW	DLM/BJO	A	07/09/12	ISSUED FOR REVIEW	DLM											
	NO.	DATE	REVISION	DRCH																										
B	08/07/12	ISSUED FOR REVIEW	DLM/BJO																											
A	07/09/12	ISSUED FOR REVIEW	DLM																											
<table border="1"> <tr> <th>ITEM NO.</th> <th>DESCRIPTION</th> <th>QTY</th> <th>ITEM NO.</th> <th>DESCRIPTION</th> <th>QTY</th> </tr> <tr> <td>1</td> <td>24.000" O.D. x 0.375" W.T. API PS2 2 X-65 ERW DRIL BBE 14-16 MILS FBE</td> <td>N/A</td> <td></td> <td></td> <td></td> </tr> <tr> <td>2</td> <td>24.000" O.D. x 0.438" W.T. API PS2 2 X-65 ERW DRIL BBE 14-16 MILS FBE 30 MILS APO DR.</td> <td>20</td> <td></td> <td></td> <td></td> </tr> <tr> <td>3</td> <td>24.000" O.D. x 0.500" W.T. API PS2 2 X-65 ERW DRIL BBE 14-16 MILS FBE 30 MILS APO DR.</td> <td>4007</td> <td></td> <td></td> <td></td> </tr> </table>	ITEM NO.	DESCRIPTION	QTY	ITEM NO.	DESCRIPTION	QTY	1	24.000" O.D. x 0.375" W.T. API PS2 2 X-65 ERW DRIL BBE 14-16 MILS FBE	N/A				2	24.000" O.D. x 0.438" W.T. API PS2 2 X-65 ERW DRIL BBE 14-16 MILS FBE 30 MILS APO DR.	20				3	24.000" O.D. x 0.500" W.T. API PS2 2 X-65 ERW DRIL BBE 14-16 MILS FBE 30 MILS APO DR.	4007									
ITEM NO.	DESCRIPTION	QTY	ITEM NO.	DESCRIPTION	QTY																									
1	24.000" O.D. x 0.375" W.T. API PS2 2 X-65 ERW DRIL BBE 14-16 MILS FBE	N/A																												
2	24.000" O.D. x 0.438" W.T. API PS2 2 X-65 ERW DRIL BBE 14-16 MILS FBE 30 MILS APO DR.	20																												
3	24.000" O.D. x 0.500" W.T. API PS2 2 X-65 ERW DRIL BBE 14-16 MILS FBE 30 MILS APO DR.	4007																												

H SCALE:

V SCALE:

WILLBROS

400 Inverness Pkwy, Ste 400
Denver, CO 80112
303-790-1200

**PLAINS AA PROPOSED 24" PIPELINE
ESCATAWPA RIVER
HORIZONTAL DIRECTIONAL DRILL
PLAN AND PROFILE
JACKSON COUNTY, MISSISSIPPI**

SCALE: AS SHOWN DRAWN: DLM CHECKED BY: BJO DATE: 06/07/12

JOB NO. 52031 DRAWING: 52031-33-032 REV. B

WILLBROS MAKES NO WARRANTY (EXPRESS, IMPLIED OR OTHERWISE) THAT THE INFORMATION CONTAINED HEREIN IS ACCURATE OR COMPLETE AS TO ANY AND ALL SUBSURFACE CONDITIONS AND CONFORMATION. ANY RELIANCE THE CONTRACTOR PLACES ON INFORMATION CONTAINED HEREIN AS TO SUCH CONDITIONS IS DONE AT ITS OWN RISK AND EXPENSE. IT IS THE SOLE RESPONSIBILITY OF THE CONTRACTOR TO CONTACT THE STATE "ONE CALL" SYSTEM PRIOR TO ANY EXCAVATION.

ISSUED FOR REVIEW

STATIONING

STA. 1203+33 9'38.40" L.T.
 STA. 1204+71 9'11.21" R.T.
 STA. 1206+63 6'47.16" R.T.
 STA. 1208+07 6'49.45" L.T.

STA. 1218+00 EXIT HDD
 STA. 1218+46 HDD TIE-IN

STA. 1235+48 SEC. LINE

STA. 1244+04 C/L FIELD RD.
 STA. 1244+64 C/L FIELD RD.
 STA. 1245+11 HDD TIE-IN
 STA. 1245+48 ENTRY HDD
 STA. 1246+19 C/L FIELD RD.
 STA. 1247+00 C/L FIELD RD.
 STA. 1247+11 FENCE

STA. 1249+69 EDGE OF WATER
 STA. 1250+84 EDGE OF WATER

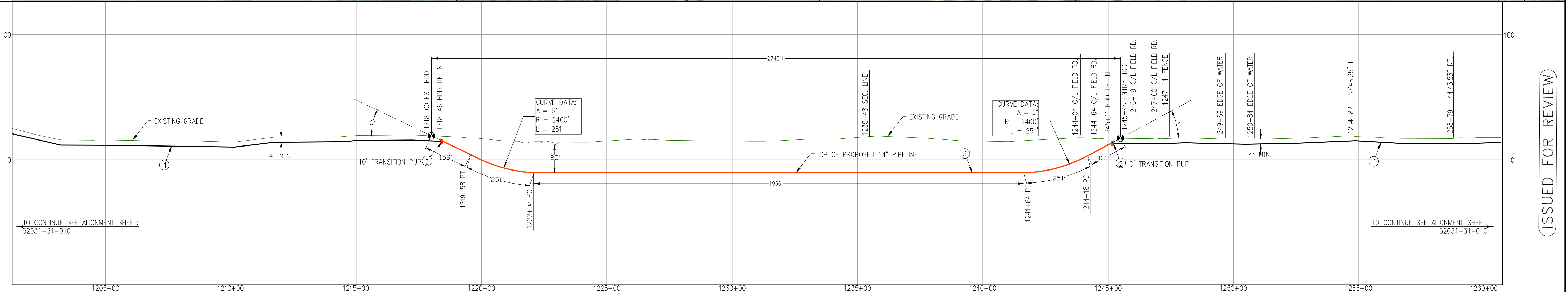
STA. 1254+82 57'46.35" L.T.
 STA. 1258+79 44'43.53" R.T.

ALIGNMENT

JACKSON COUNTY, MISSISSIPPI



PROFILE



NOTE: THIS DRAWING IS INTENDED TO BE PRINTED AS 22"x34". PLEASE REFER TO GRAPHIC SCALE, AS DRAWING MAY HAVE BEEN REDUCED OR ENLARGED.

ISSUED FOR REVIEW

1-800-245-4545
 www.onecalltexas.com
 TEXAS ONE CALL SYSTEM

PIPE MATERIAL LIST			
ITEM NO.	DESCRIPTION	QTY	ITEM NO.
1	24.000" O.D. x 0.375" W.T. API 5L X-60 14-16MILS FBE	N/A	
2	24.000" O.D. x 0.438" W.T. API 5L X-52 1416 MILS FBE 30 MILS ARO DRL	20	
3	24.000" O.D. x 0.500" W.T. API 5L X-52 1416 MILS FBE 30 MILS ARO DRL	2748	

MATERIAL LIST		
ITEM NO.	DESCRIPTION	QTY

GENERAL NOTES

LEGEND	
	MILEPOST MARKER
	POINT OF INFLECTION
	HDD BORE ENTRY/EXIT
	PIPELINE MARKER
	CATHODIC TEST STATION
	INDUCTION BEND
	AERIAL MARKER
	VALVE
	BUOYANCY CONTROL
	PIPELINE
	NATURAL GROUND PROFILE
	RAILROAD
	FENCE
	FOREIGN PIPELINE
	POWER LINE
	FIBER OPTIC
	TELEPHONE LINE
	CENTERLINE ROAD
	PROPERTY LINE
	WATER LINE
	PARCELS
	WETLANDS
	PERMANENT EASEMENT
	TEMPORARY WORKSPACE
	COUNTY/PARISH BOUNDARY
	FABRICATION

REVISIONS		DRCH
NO.	DATE	REVISION
B	8/10/12	ISSUED FOR REVIEW
A	8/08/12	ISSUED FOR REVIEW

DISCLAIMER

WILLBROS MAKES NO WARRANTY (EXPRESS, IMPLIED OR OTHERWISE) THAT THE INFORMATION CONTAINED HEREIN IS ACCURATE OR COMPLETE AS TO ANY AND ALL SUBSURFACE CONDITIONS AND CONFORMATION. ANY RELIANCE THE CONTRACTOR PLACES ON INFORMATION CONTAINED HEREIN AS TO SUCH CONDITIONS IS DONE AT ITS OWN RISK AND EXPENSE. IT IS THE SOLE RESPONSIBILITY OF THE CONTRACTOR TO CONTACT THE STATE "ONE CALL" SYSTEM PRIOR TO ANY EXCAVATION.

400 Inverness Pkwy, Ste 400
 Denver, CO 80112
 303-790-1200

PLAINS AA PROPOSED 24" PIPELINE
 ESCATAWPA WETLANDS
 HORIZONTAL DIRECTIONAL DRILL
 PLAN AND PROFILE
 JACKSON COUNTY, MISSISSIPPI

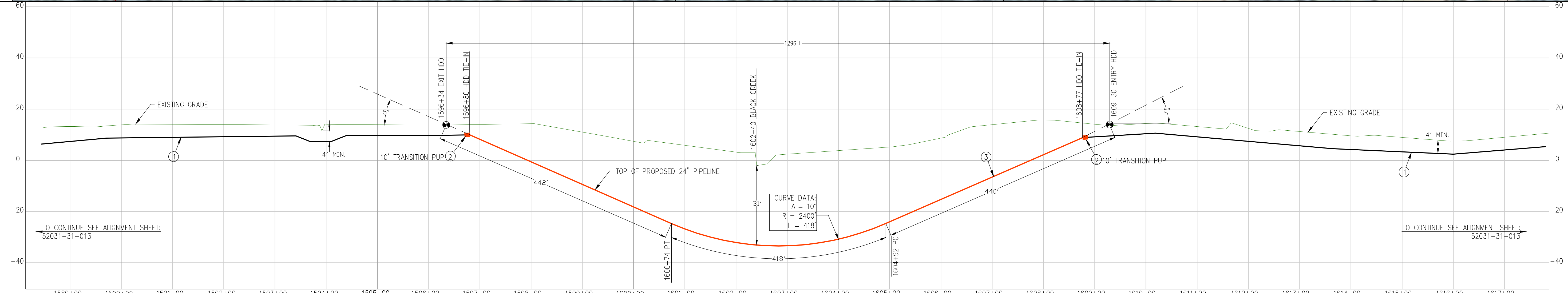
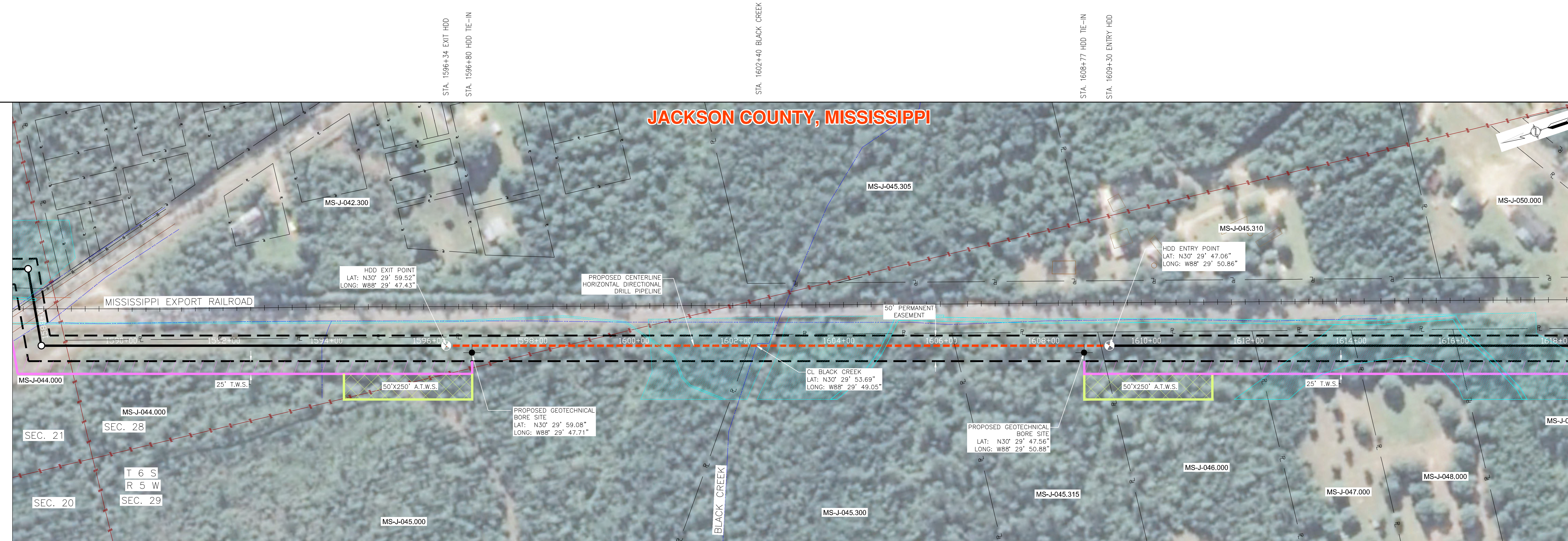
SCALE: AS SHOWN	DRAWN: DLM	CHECKED BY: BJD	DATE: 08/07/12
JOB NO: 52031	DRAWING: 52031-33-039	REV: B	

STATIONING

ALIGNMENT

PROFILE

JACKSON COUNTY, MISSISSIPPI



NOTE: THIS DRAWING IS INTENDED TO BE PRINTED AS 22"x34". PLEASE REFER TO GRAPHIC SCALE, AS DRAWING MAY HAVE BEEN REDUCED OR ENLARGED.

ISSUED FOR REVIEW

1-800-245-4545
www.onecalltexas.com
TEXAS ONE CALL SYSTEM

H SCALE: 1" = 50'
GRAPHIC SCALE IN FEET

V SCALE: 1" = 10'
GRAPHIC SCALE IN FEET

PIPE MATERIAL LIST				MATERIAL LIST			
ITEM NO.	DESCRIPTION	QTY	ITEM NO.	DESCRIPTION	QTY		
1	24.000" O.D. x 0.375" W.T. API 5L X-60 14-16MILS FBE	N/A					
2	24.000" O.D. x 0.438" W.T. API 5L X-52 1416 MILS FBE 30 MILS ARO DRL	20					
3	24.000" O.D. x 0.500" W.T. API 5L X-52 1416 MILS FBE 30 MILS ARO DRL	1,300					

GENERAL NOTES

LEGEND

○ MILEPOST MARKER	— PIPELINE	— W- WATER LINE
○ POINT OF INFLECTION	— NATURAL GROUND PROFILE	▭ PARCELS
⊕ HDD/BORE ENTRY EXIT	— RAILROAD	▨ WETLANDS
○ PIPELINE MARKER	— FENCE	▨ PERMANENT EASEMENT
⊕ CATHODIC TEST STATION	— FOREIGN PIPELINE	▨ TEMPORARY WORKSPACE
⊕ INDUCTION BEND	— POWER LINE	▨ ADDITIONAL TEMP. WORKSPACE
⊕ AERIAL MARKER	— FIBER OPTIC	▨ COUNTY/PARISH BOUNDARY
⊕ VALVE	— TELEPHONE LINE	▨ FABRICATION
⊕ BUOYANCY CONTROL	— CENTERLINE ROAD	
	— PROPERTY LINE	

NO.		DATE		REVISIONS		DR/CH
				REVISION		
A		8/13/12		ISSUED FOR REVIEW		DLM/BJD
DISCLAIMER						

WILLBROS MAKES NO WARRANTY (EXPRESS, IMPLIED OR OTHERWISE) THAT THE INFORMATION CONTAINED HEREIN IS ACCURATE OR COMPLETE AS TO ANY AND ALL SUBSURFACE CONDITIONS AND CONFORMATION. ANY RELIANCE THE CONTRACTOR PLACES ON INFORMATION CONTAINED HEREIN AS TO SUCH CONDITIONS IS DONE AT ITS OWN RISK AND EXPENSE. IT IS THE SOLE RESPONSIBILITY OF THE CONTRACTOR TO CONTACT THE STATE "ONE CALL" SYSTEM PRIOR TO ANY EXCAVATION.

400 Inverness Pkwy, Ste 400
Denver, CO 80112
303-790-1200

**PLAINS AA PROPOSED 24" PIPELINE
BLACK CREEK
HORIZONTAL DIRECTIONAL DRILL
PLAN AND PROFILE
JACKSON COUNTY, MISSISSIPPI**

SCALE: AS SHOWN	DRAWN: DLM	CHECKED BY: BJD	DATE: 08/10/12
JOB NO: 52031	DRAWING: 52031-33-040	REV: A	

STATIONING

PROPOSED M.L.V. SITE
 STA. 1761+80 HDD EXIT
 STA. 1762+03 HDD TIE-IN

STA. 1763+51 O.H. POWERLINE
 STA. 1763+59 FENCE

STA. 1764+45 EDGE OF ROAD/
 SEC. LINE

STA. 1764+71 I-10 W.B.

STA. 1764+85 EDGE OF ROAD

STA. 1765+29 C/L DITCH

STA. 1765+64 EDGE OF ROAD

STA. 1765+86 I-10 E.B.

STA. 1766+05 EDGE OF ROAD

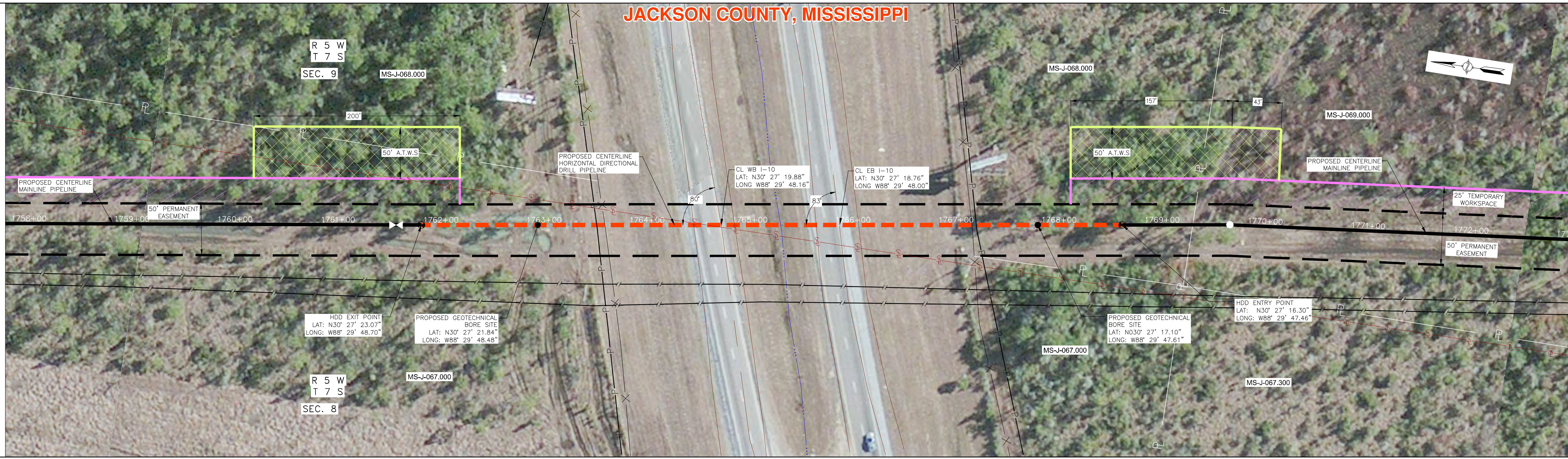
STA. 1767+15 POWER LINE

STA. 1767+19 FENCE/ROW

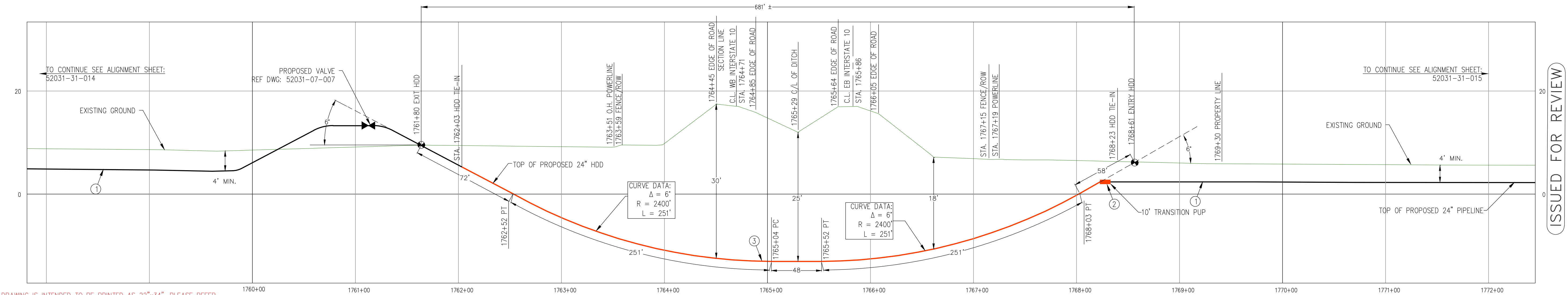
STA. 1768+23 HDD TIE-IN
 STA. 1768+61 ENTRY HDD

STA. 1769+30 PROPERTY LINE
 STA. 1769+66 2281'Z

ALIGNMENT



PROFILE



NOTE: THIS DRAWING IS INTENDED TO BE PRINTED AS 22"x34". PLEASE REFER TO GRAPHIC SCALE, AS DRAWING MAY HAVE BEEN REDUCED OR ENLARGED.

ISSUED FOR REVIEW

1-800-345-4545
 www.onecalltexas.com
 TEXAS ONE CALL SYSTEM

H SCALE: 1" = 25'
 GRAPHIC SCALE IN FEET

V SCALE: 1" = 5'
 GRAPHIC SCALE IN FEET

PIPE MATERIAL LIST				MATERIAL LIST			
ITEM NO.	DESCRIPTION	QTY	ITEM NO.	DESCRIPTION	QTY		
1	24.000" O.D. x 0.375" W.T. API PSL 2 X-65 ERW DRL BBE 14-16 MILS FBE	N/A					
2	24.000" O.D. x 0.438" W.T. API PSL 2 X-65 ERW DRL BBE 14-16 MILS FBE 30 MILS ARO DRL	10					
3	24.000" O.D. x 0.500" W.T. API PSL 2 X-65 ERW DRL BBE 14-16 MILS FBE 30 MILS ARO DRL	680					

GENERAL NOTES

1. MILEPOST MARKER

2. POINT OF INFLECTION

3. HDD BORE ENTRY POINT

4. PIPELINE MARKER

5. CATHODIC TEST STATION

6. INDUCTION BEND

7. AERIAL MARKER

8. VALVE

9. BUOYANCY CONTROL

10. WATER LINE

11. NATURAL GROUND PROFILE

12. PARCELS

13. WETLANDS

14. FENCE

15. FOREIGN PIPELINE

16. POWER LINE

17. FIBER OPTIC

18. TELEPHONE LINE

19. CENTERLINE ROAD

20. PROPERTY LINE

21. TEMPORARY WORKSPACE

22. ADDITIONAL TEMP. WORKSPACE

23. COUNTY/PARISH BOUNDARY

24. FABRICATION

REVISIONS			
NO.	DATE	REVISION	DRCH
B	6/27/12	ISSUED FOR REVIEW	DLM
C	7/09/12	ISSUED FOR REVIEW	DLM
D	8/03/12	ISSUED FOR REVIEW	DLM

DISCLAIMER

WILLBROS MAKES NO WARRANTY (EXPRESS, IMPLIED OR OTHERWISE) THAT THE INFORMATION CONTAINED HEREIN IS ACCURATE OR COMPLETE AS TO ANY AND ALL SUBSURFACE CONDITIONS AND CONFORMATION. ANY RELIANCE THE CONTRACTOR PLACES ON INFORMATION CONTAINED HEREIN AS TO SUCH CONDITIONS IS DONE AT ITS OWN RISK AND EXPENSE. IT IS THE SOLE RESPONSIBILITY OF THE CONTRACTOR TO CONTACT THE STATE 'ONE CALL' SYSTEM PRIOR TO ANY EXCAVATION.

400 Inverness Pkwy, Ste 400
 Denver, CO 80112
 303-790-1200

PLAINS AA PROPOSED 24" PIPELINE
 INTERSTATE 10
 HORIZONTAL DIRECTIONAL DRILL
 PLAN AND PROFILE
 JACKSON COUNTY, MISSISSIPPI

SCALE: AS SHOWN
 DRAWN: DLM
 CHECKED BY: BJO
 DATE: 06/20/12

JOB NO. 52031
 DRAWING: 52031-33-033
 REV. D