



Path: C:\Users\jrabalas\Desktop\My_Projects\22932_Pascagoula_Pipeline\Map\Report Maps\PCN\PCN Plan Views.mxd

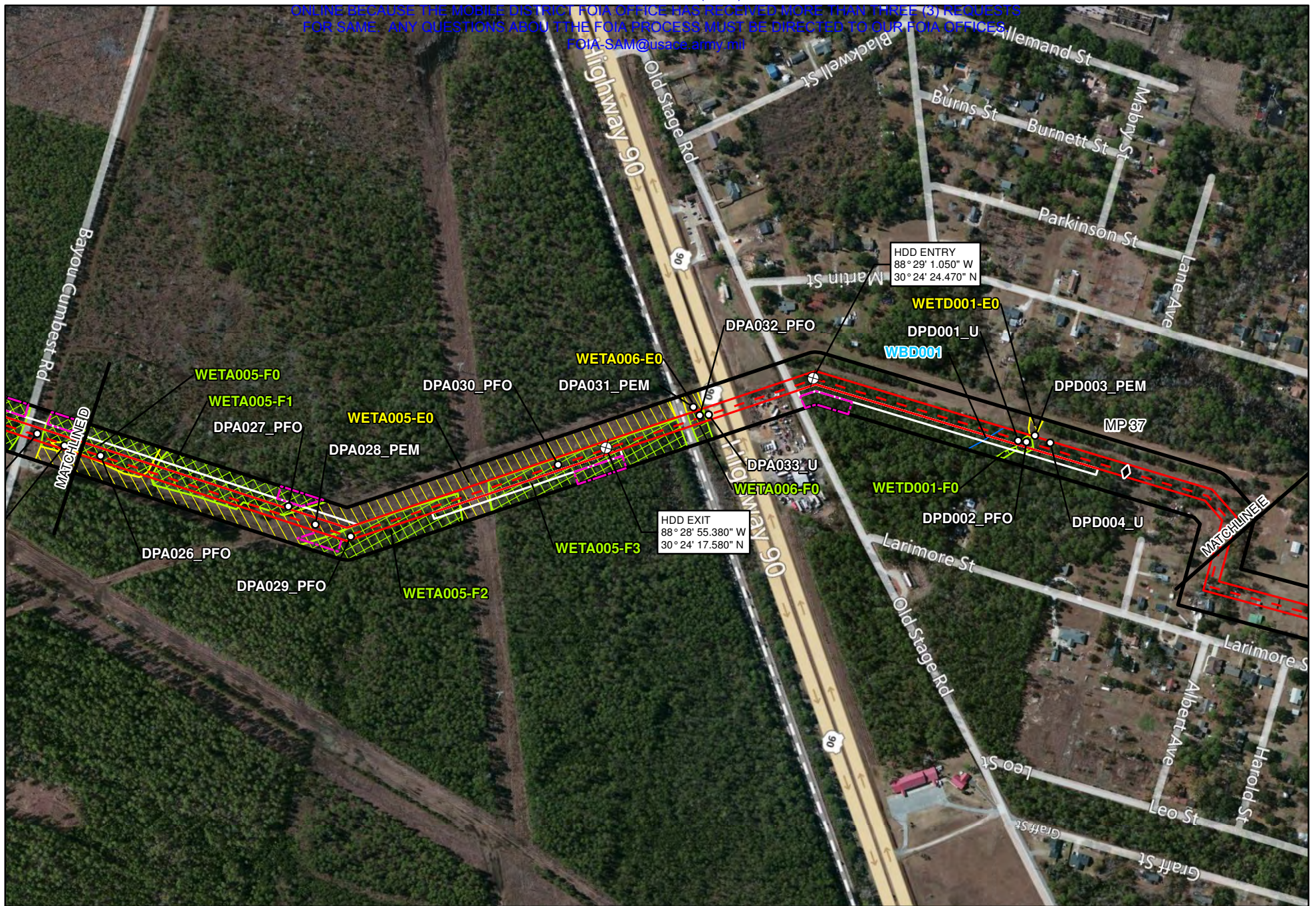
SWCA
ENVIRONMENTAL CONSULTANTS
Sheet 42 of 47

**PLAINS SOUTHCAP L.L.C.
PLAN VIEW
41-MILE-LONG TEN-MILE FACILITY TO
PASCAGOULA PIPELINE PROJECT
JACKSON COUNTY, MS**

- Centerline
- Permanent RoW
- Temporary RoW
- Additional Workspace
- 200' Survey
- Unsurveyed Areas
- PEM
- PFO
- PSS
- EEM
- Streams
- Sample Point
- ◆ Milepost
- ⊕ HDD Entry/Exit

COMMENT:
USACE MOBILE DISTRICT

Background: Bing Maps Hybrid (2012)
Mapper: JR
Approved By: Preliminary Draft
SWCA Project No: 22932
Date Produced: 8/20/2012
Revision Date:
0 250 500 Feet
Coordinate System: NAD 1983 UTM Zone 16N
Units: Foot US



Path: C:\Users\jrabalais\Desktop\My_Pipeline\WAPS\mxd\Report Maps\PCN\PCN Plan Views.mxd

SWCA
ENVIRONMENTAL CONSULTANTS
Sheet 43 of 47

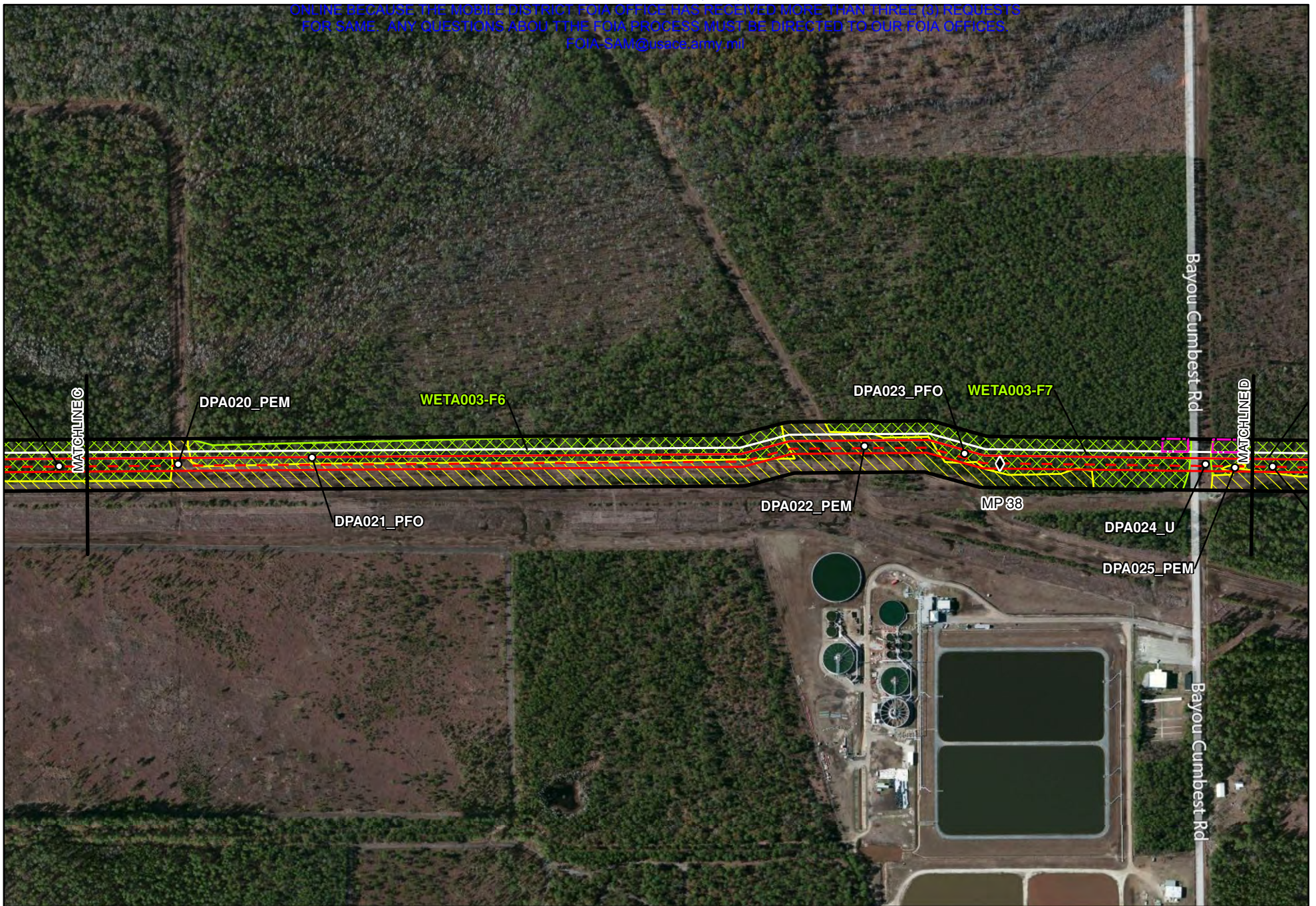
PLAINS SOUTHCAP L.L.C.
PLAN VIEW
41-MILE-LONG TEN-MILE FACILITY TO PASCAGOULA PIPELINE PROJECT
JACKSON COUNTY, MS

Centerline	PEM	Sample Point
Permanent RoW	PFO	Milepost
Temporary RoW	PSS	HDD Entry/Exit
Additional Workspace	EEM	
200' Survey	Streams	
Unsurveyed Areas		

COMMENT:
USACE MOBILE DISTRICT

Background: Bing Maps Hybrid (2012)
Mapper: JR
Approved By: Preliminary Draft
SWCA Project No: 22332
Date Produced: 8/20/2012
Revision Date:

0 250 500 Feet
Coordinate System: NAD 1983 UTM Zone 16N
Units: Foot US



Path: C:\Users\jrabalais\Desktop\My Projects\22932_Pascagoula_Pipeline\MAPS\mxd\Report Maps\PCN\PCN Plan Views.mxd



Sheet 44 of 47

**PLAINS SOUTHCAP L.L.C.
PLAN VIEW
41-MILE-LONG TEN-MILE FACILITY TO
PASCAGOULA PIPELINE PROJECT
JACKSON COUNTY, MS**

- Centerline
- Permanent RoW
- Temporary RoW
- Additional Workspace
- 200' Survey
- Unsurveyed Areas
- PEM
- PFO
- PSS
- EEM
- Streams
- Sample Point
- ◆ Milepost
- ⊕ HDD Entry/Exit

COMMENT:
USACE MOBILE DISTRICT

Background: Bing Maps Hybrid (2012)
Mapper: JR
Approved By: Preliminary Draft
SWCA Project No: 22932
Date Produced: 8/20/2012
Revision Date:

Coordinate System: NAD 1983 UTM Zone 16N
Units: Feet US



Path: C:\Users\jrabalais\Desktop\My_Projects\22832_Pascagoula_Pipeline\MAPS\mxd\Report Maps\PCN\PCN Plan Views.mxd



**PLAINS SOUTHCAP L.L.C.
PLAN VIEW
41-MILE-LONG TEN-MILE FACILITY TO
PASCAGOULA PIPELINE PROJECT
JACKSON COUNTY, MS**

Centerline	PEM	Sample Point
Permanent RoW	PFO	Milepost
Temporary RoW	PSS	HDD Entry/Exit
Additional Workspace	EEM	
200' Survey	Streams	
Unsurveyed Areas		

COMMENT:
USACE MOBILE DISTRICT

Background: Bing Maps Hybrid (2012)
Mapper: JR
Approved By: Preliminary Draft
SWCA Project No: 22832
Date Produced: 8/20/2012
Revision Date:

Coordinate System: NAD 1983 UTM Zone 16N
Units: Feet US



Path: C:\Users\jrabalais\Desktop\My_Pipeline\WAS\mxd\Report Maps\PCN\PCN Plan Views.mxd



**PLAINS SOUTHCAP L.L.C.
PLAN VIEW
41-MILE-LONG TEN-MILE FACILITY TO
PASCAGOULA PIPELINE PROJECT
JACKSON COUNTY, MS**

- Centerline
- Permanent RoW
- Temporary RoW
- Additional Workspace
- 200' Survey
- Unsurveyed Areas
- PEM
- PFO
- PSS
- EEM
- Streams
- Sample Point
- ◆ Milepost
- ⊕ HDD Entry/Exit

COMMENT:
USACE MOBILE DISTRICT

Background: Bing Maps Hybrid (2012)
Mapper: JR
Approved By: Preliminary Draft
SWCA Project No: 22332
Date Produced: 8/20/2012
Revision Date:

Coordinate System: NAD 1983 UTM Zone 16N
Units: Feet US