

AS REQUIRED BY THE FREEDOM OF INFORMATION ACT (FOIA) THIS FILE IS BEING MADE AVAILABLE ONLINE BECAUSE THE MOBILE DISTRICT FOIA OFFICE HAS RECEIVED MORE THAN THREE (3) REQUESTS FOR SAME. ANY QUESTIONS ABOUT THE FOIA PROCESS MUST BE DIRECTED TO OUR FOIA OFFICES.  
FOIA-SAM@usace.army.mil

## **Attachment A**

### **PCN Maps, Figures and Drawings**



Path: C:\Users\jrabalais\Desktop\My\_Projects\22932\_Pascagoula\_Pipeline\MAPS\mxd\Report Maps\PCN\PCN Plan Views.mxd



**PLAINS SOUTHCAP L.L.C.  
PLAN VIEW  
41-MILE-LONG TEN-MILE FACILITY TO  
PASCAGOULA PIPELINE PROJECT  
MISSISSIPPI / ALABAMA**

- Centerline
- Permanent RoW
- Temporary RoW
- Additional Workspace
- 200' Survey
- Unsurveyed Areas
- PEM
- PFO
- PSS
- EEM
- Streams
- Sample Point
- ◆ Milepost
- ⊕ HDD Entry/Exit

**COMMENT:**  
USACE MOBILE DISTRICT

Background: Bing Maps Hybrid (2012)  
Mapper: JR  
Approved By: Preliminary Draft  
SWCA Project No: 22932  
Date Produced: 8/20/2012  
Revision Date:

Coordinate System: NAD 1983 UTM Zone 16N  
Units: Feet US



Path: C:\Users\abalas\Documents\My Projects\22932\_Pascagoula\_Pipeline\MAPS\mxd\Report Maps\PCN\PCN Plan Views.mxd



**PLAINS SOUTHCAP L.L.C.  
PLAN VIEW  
41-MILE-LONG TEN-MILE FACILITY TO  
PASCAGOULA PIPELINE PROJECT  
JACKSON COUNTY, MS**

- |                      |         |                |
|----------------------|---------|----------------|
| Centerline           | PEM     | Sample Point   |
| Permanent RoW        | PFO     | Milepost       |
| Temporary RoW        | PSS     | HDD Entry/Exit |
| Additional Workspace | EEM     |                |
| 200' Survey          | Streams |                |
| Unsurveyed Areas     |         |                |

**COMMENT:**  
USACE MOBILE DISTRICT

Background: Bing Maps Hybrid (2012)  
Mapper: JR  
Approved By: Preliminary Draft  
SWCA Project No: 22932  
Date Produced: 8/20/2012  
Revision Date:

Coordinate System: NAD 1983 UTM Zone 16N  
Units: Feet US



Path: C:\Users\jrabalais\Documents\My Projects\22932\_Pascagoula\_Pipeline\MAPS\mxd\Report Maps\PCN\PCN Plan Views.mxd



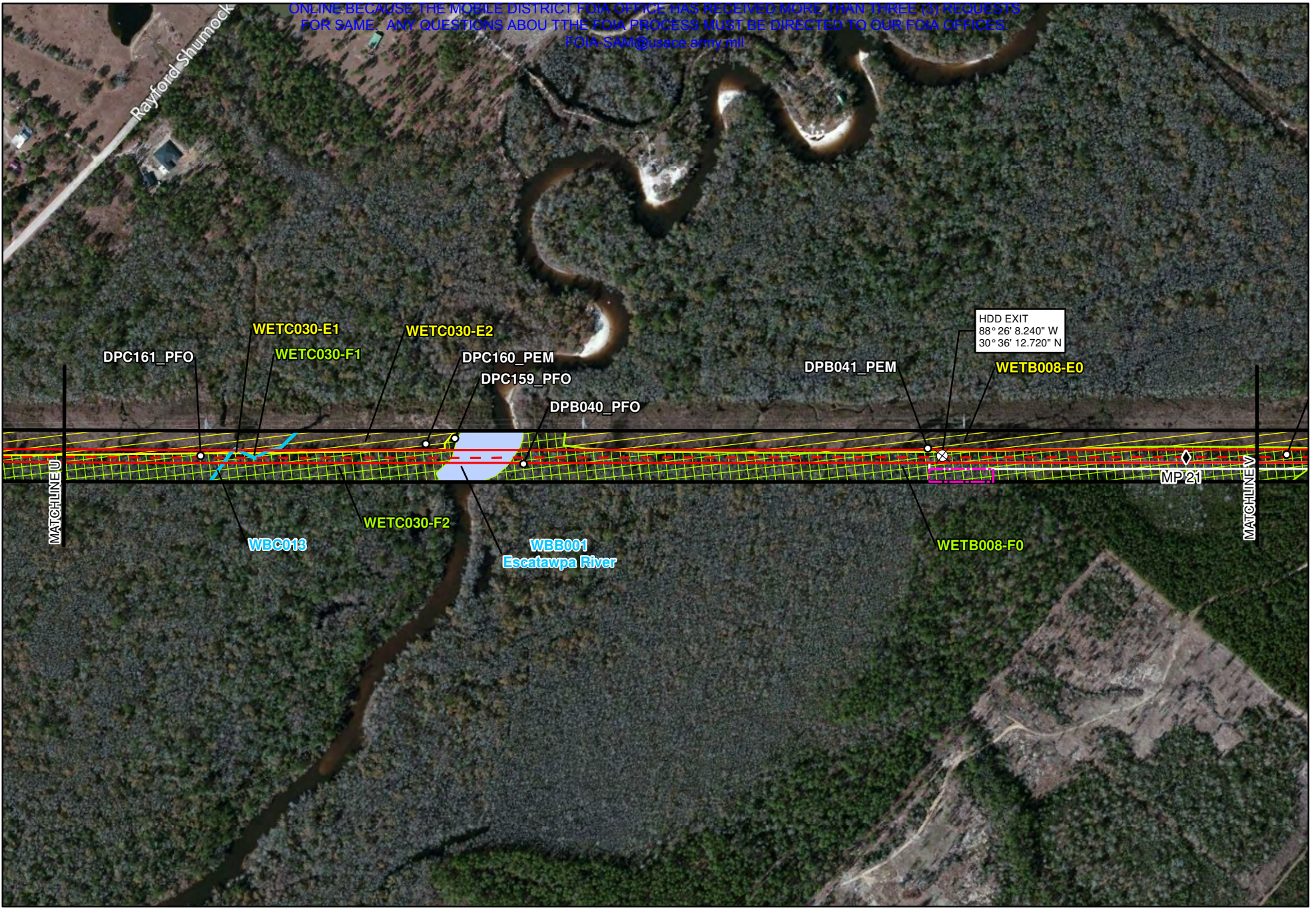
**PLAINS SOUTHCAP L.L.C.  
PLAN VIEW  
41-MILE-LONG TEN-MILE FACILITY TO  
PASCAGOULA PIPELINE PROJECT  
JACKSON COUNTY, MS**

- Centerline
- Permanent RoW
- Temporary RoW
- Additional Workspace
- 200' Survey
- Unsurveyed Areas
- PEM
- PFO
- PSS
- EEM
- Streams
- Sample Point
- Milepost
- HDD Entry/Exit

**COMMENT:**  
USACE MOBILE DISTRICT

Background: Bing Maps Hybrid (2012)  
Mapper: JR  
Approved By: Preliminary Draft  
SWCA Project No: 22932  
Date Produced: 8/20/2012  
Revision Date:

Coordinate System: NAD 1983 UTM Zone 16N  
Units: Foot US



Path: C:\Users\abalas\Desktop\My\_Projects\22932\_Pascagoula\_Pipeline\MAPS\mxd\Report Maps\PCN\PCN Plan Views.mxd



**PLAINS SOUTHCAP L.L.C.  
PLAN VIEW  
41-MILE-LONG TEN-MILE FACILITY TO  
PASCAGOULA PIPELINE PROJECT  
JACKSON COUNTY, MS**

- Centerline
- Permanent RoW
- Temporary RoW
- Additional Workspace
- 200' Survey
- Unsurveyed Areas
- PEM
- PFO
- PSS
- EEM
- Streams
- Sample Point
- ◆ Milepost
- ⊕ HDD Entry/Exit

COMMENT:  
USACE MOBILE DISTRICT

Background: Bing Maps Hybrid (2012)  
Mapper: JR  
Approved By: Preliminary Draft  
SWCA Project No: 22932  
Date Produced: 8/20/2012  
Revision Date:

Coordinate System: NAD 1983 UTM Zone 16N  
Units: Feet US



Path: C:\Users\abalas\Desktop\My\_Projects\22932\_Pascagoula\_Pipeline\MAPS\mxd\Report Maps\PCN\PCN Plan Views.mxd



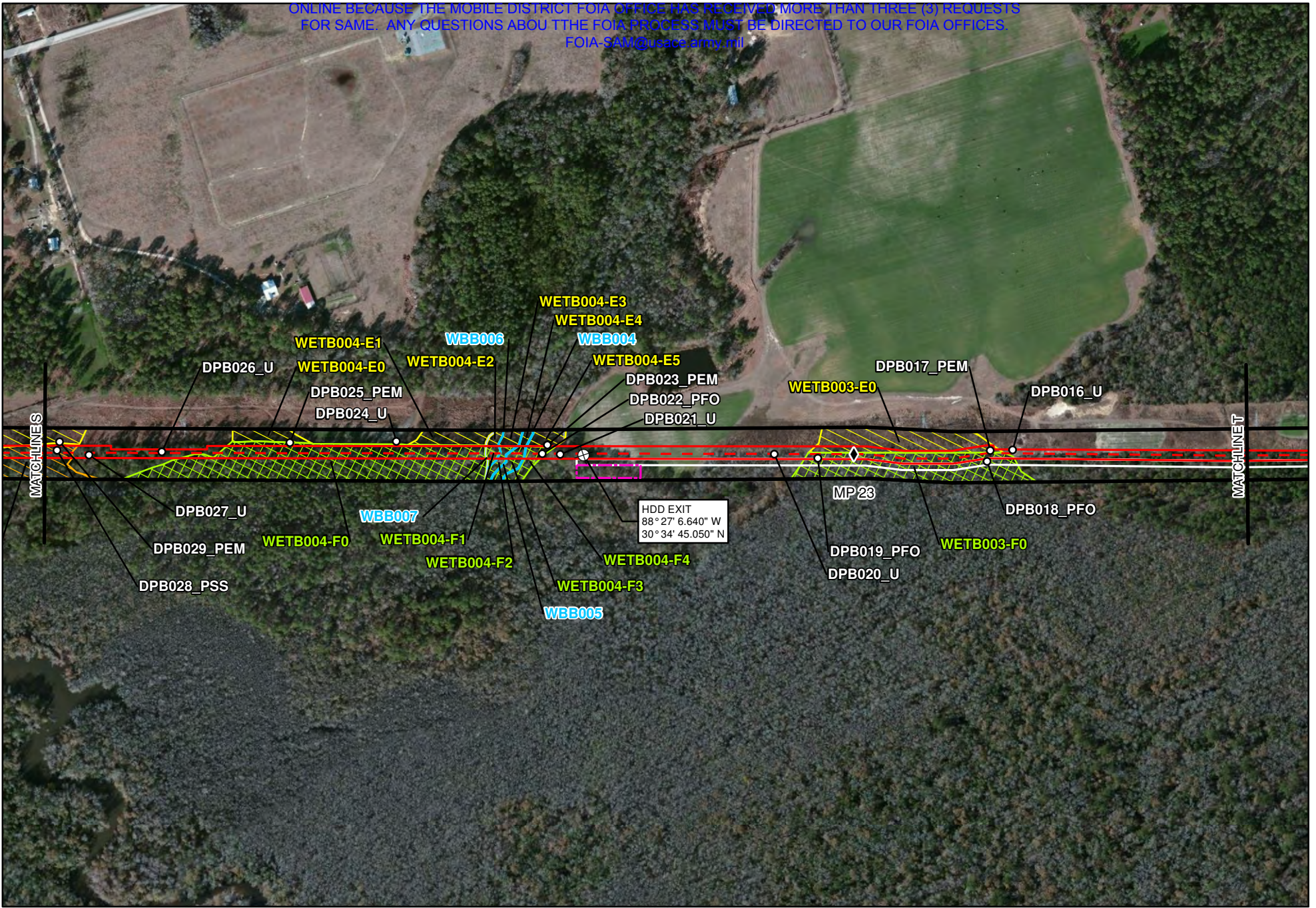
**PLAINS SOUTHCAP L.L.C.  
PLAN VIEW  
41-MILE-LONG TEN-MILE FACILITY TO  
PASCAGOULA PIPELINE PROJECT  
JACKSON COUNTY, MS**

- Centerline
- Permanent RoW
- Temporary RoW
- Additional Workspace
- 200' Survey
- Unsurveyed Areas
- PEM
- PFO
- PSS
- EEM
- Streams
- Sample Point
- ◆ Milepost
- HDD Entry/Exit

**COMMENT:**  
USACE MOBILE DISTRICT

Background: Bing Maps Hybrid (2012)  
Mapper: JR  
Approved By: Preliminary Draft  
SWCA Project No: 22932  
Date Produced: 8/20/2012  
Revision Date:

Coordinate System: NAD 1983 UTM Zone 16N  
Units: Foot US



Path: C:\Users\abalais\Desktop\My Projects\22832\_Pascagoula\_Pipeline\MAPS\mxd\Report Maps\PCN\PCN Plan Views.mxd



**PLAINS SOUTHCAP L.L.C.  
PLAN VIEW  
41-MILE-LONG TEN-MILE FACILITY TO  
PASCAGOULA PIPELINE PROJECT  
JACKSON COUNTY, MS**

- Centerline
- Permanent RoW
- Temporary RoW
- Additional Workspace
- 200' Survey
- Unsurveyed Areas
- PEM
- PFO
- PSS
- EEM
- Streams
- Sample Point
- ◆ Milepost
- ⊕ HDD Entry/Exit

**COMMENT:**  
USACE MOBILE DISTRICT

Background: Bing Maps Hybrid (2012)  
Mapper: JR  
Approved By: Preliminary Draft  
SWCA Project No: 22832  
Date Produced: 8/20/2012  
Revision Date:

Coordinate System: NAD 1983 UTM Zone 16N  
Units: Feet US



Path: C:\Users\abalas\Documents\My Projects\22932\_Pascagoula\_Pipeline\MAPS\mxd\Report Maps\PCN\PCN Plan Views.mxd

**SWCA**  
 ENVIRONMENTAL CONSULTANTS  
 Sheet 29 of 47

**PLAINS SOUTHCAP L.L.C.**  
**PLAN VIEW**  
**41-MILE-LONG TEN-MILE FACILITY TO**  
**PASCAGOULA PIPELINE PROJECT**  
**JACKSON COUNTY, MS**

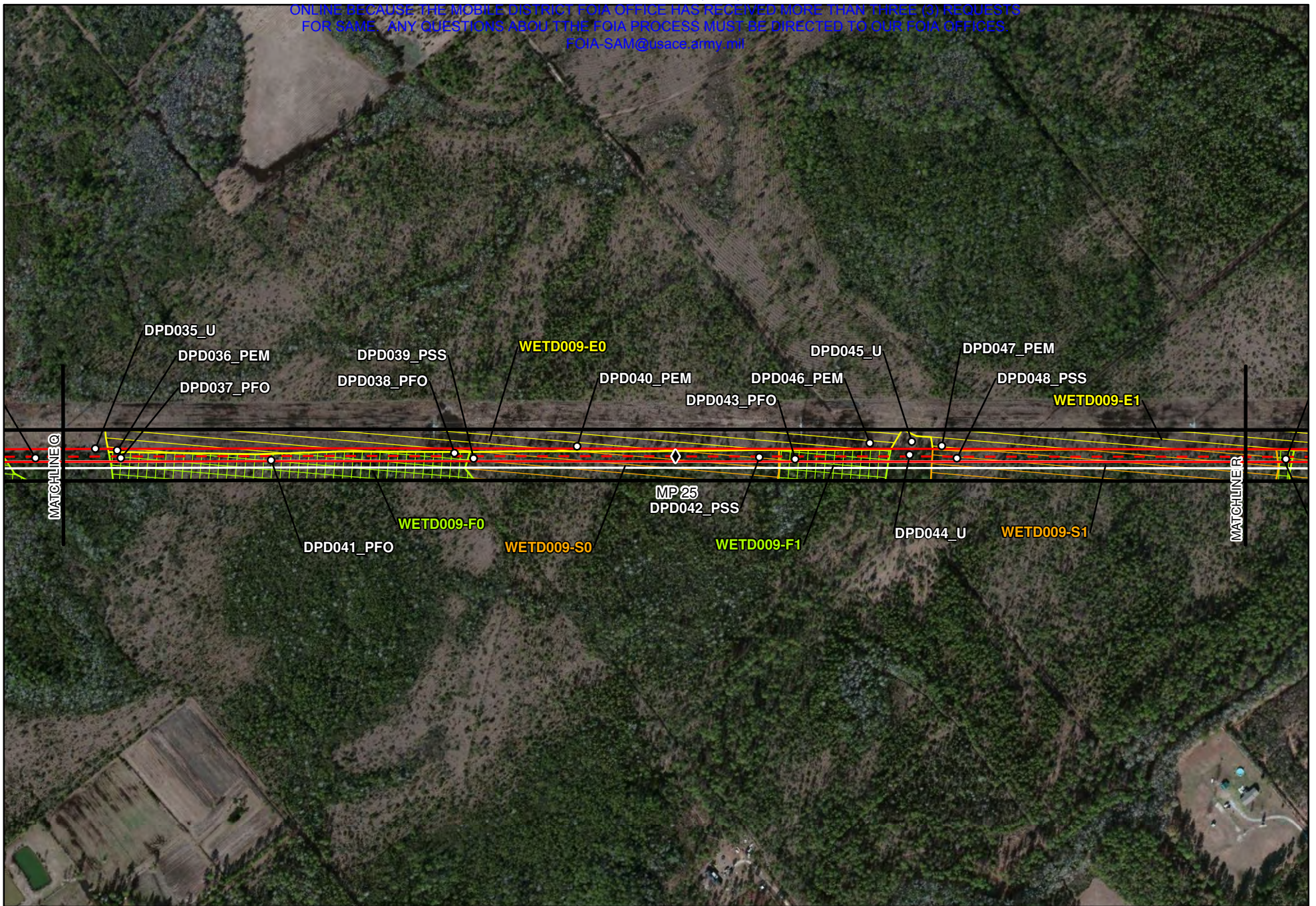
- Centerline
- Permanent RoW
- Temporary RoW
- Additional Workspace
- 200' Survey
- Unsurveyed Areas
- PEM
- PFO
- PSS
- EEM
- Streams
- Sample Point
- ◆ Milepost
- ⊕ HDD Entry/Exit

COMMENT:  
 USACE MOBILE DISTRICT

Background: Bing Maps Hybrid (2012)  
 Mapper: JR  
 Approved By: Preliminary Draft  
 SWCA Project No: 22932  
 Date Produced: 8/20/2012  
 Revision Date:

0 250 500 Feet  
 Coordinate System: NAD 1983 UTM Zone 16N  
 Units: Foot US





Path: C:\Users\jrabalais\Desktop\My\_Projects\22932\_Pascagoula\_Pipeline\MAPS\mxd\Report Maps\PCN\PCN Plan Views.mxd

**SWCA**  
ENVIRONMENTAL CONSULTANTS  
Sheet 30 of 47

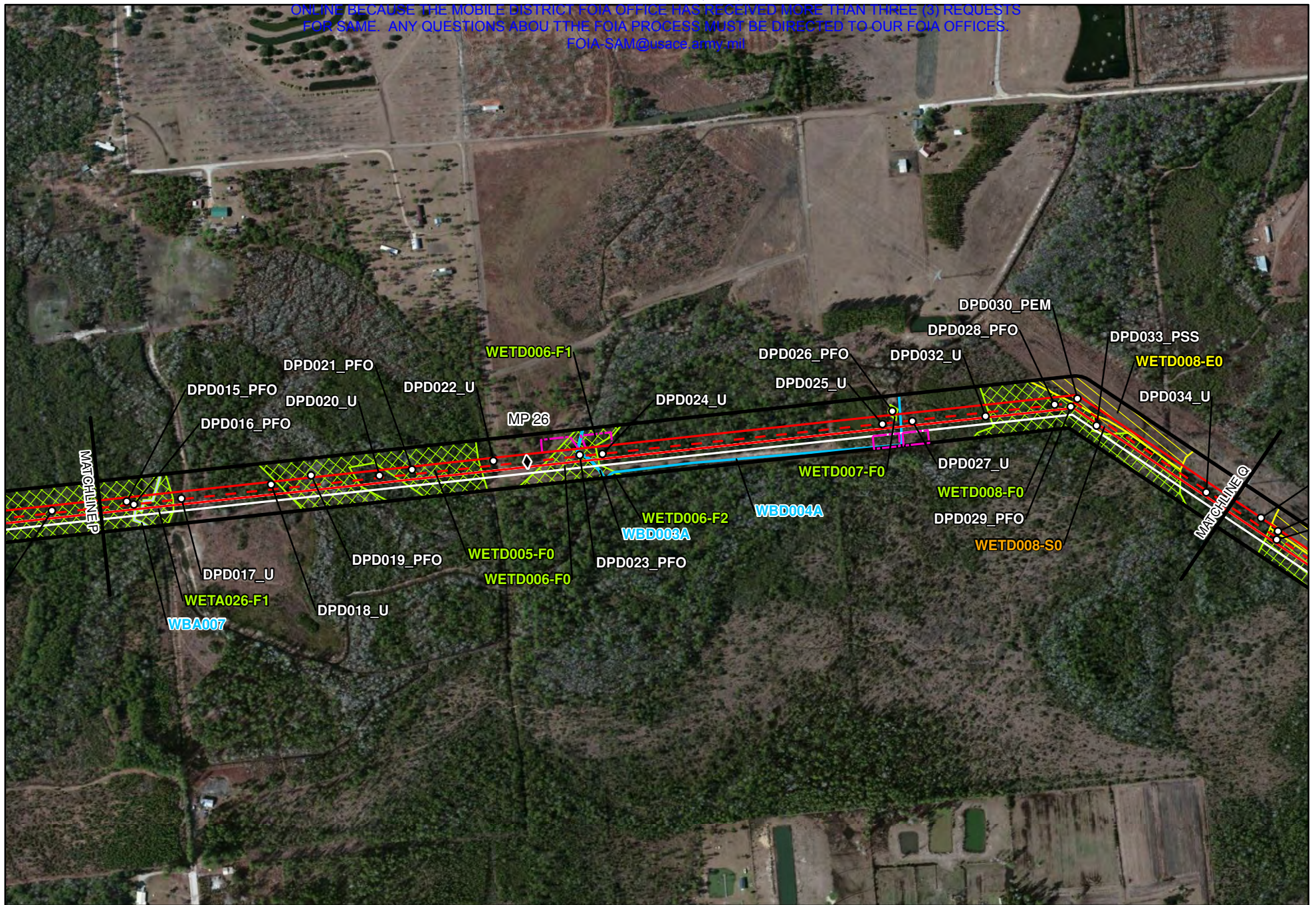
**PLAINS SOUTHCAP L.L.C.  
PLAN VIEW  
41-MILE-LONG TEN-MILE FACILITY TO  
PASCAGOULA PIPELINE PROJECT  
JACKSON COUNTY, MS**

Centerline	PEM	Sample Point
Permanent RoW	PFO	Milepost
Temporary RoW	PSS	HDD Entry/Exit
Additional Workspace	EEM	
200' Survey	Streams	
Unsurveyed Areas		

COMMENT:  
USACE MOBILE DISTRICT

Background: Bing Maps Hybrid (2012)  
Mapper: JR  
Approved By: Preliminary Draft  
SWCA Project No: 22932  
Date Produced: 8/20/2012  
Revision Date:

Coordinate System: NAD 1983 UTM Zone 16N  
Units: Feet US



Path: C:\Users\jrabalais\Desktop\My\_Projects\22932\_Pascagoula\_Pipeline\MAPS\mxd\Report Maps\PCN\PCN Plan Views.mxd



**PLAINS SOUTHCAP L.L.C.  
PLAN VIEW  
41-MILE-LONG TEN-MILE FACILITY TO  
PASCAGOULA PIPELINE PROJECT  
JACKSON COUNTY, MS**

- Centerline
- Permanent RoW
- Temporary RoW
- Additional Workspace
- 200' Survey
- Unsurveyed Areas
- PEM
- PFO
- PSS
- EEM
- Streams
- Sample Point
- Milepost
- HDD Entry/Exit

**COMMENT:**  
USACE MOBILE DISTRICT

Background: Bing Maps Hybrid (2012)  
Mapper: JR  
Approved By: Preliminary Draft  
SWCA Project No: 22932  
Date Produced: 8/20/2012  
Revision Date:

Coordinate System: NAD 1983 UTM Zone 16N  
Units: Feet US



Path: C:\Users\jrabalais\Desktop\My\_Projects\22632\_Pascagoula\_Pipeline\MAPS\mxd\Report Maps\PCN\PCN Plan Views.mxd

**SWCA**  
ENVIRONMENTAL CONSULTANTS  
Sheet 32 of 47

**PLAINS SOUTHCAP L.L.C.**  
**PLAN VIEW**  
**41-MILE-LONG TEN-MILE FACILITY TO**  
**PASCAGOULA PIPELINE PROJECT**  
**JACKSON COUNTY, MS**

Centerline	PEM	Sample Point
Permanent RoW	PFO	Milepost
Temporary RoW	PSS	HDD Entry/Exit
Additional Workspace	EEM	
200' Survey	Streams	
Unsurveyed Areas		

**COMMENT:**  
USACE MOBILE DISTRICT

Background: Bing Maps Hybrid (2012)  
Mapper: JR  
Approved By: Preliminary Draft  
SWCA Project No: 22632  
Date Produced: 8/20/2012  
Revision Date:

Coordinate System: NAD 1983 UTM Zone 16N  
Units: Feet US



Path: C:\Users\jrabalais\Desktop\My Projects\22932\_Pascagoula\_Pipeline\MAPS\mxd\Report Maps\PCN\PCN Plan Views.mxd



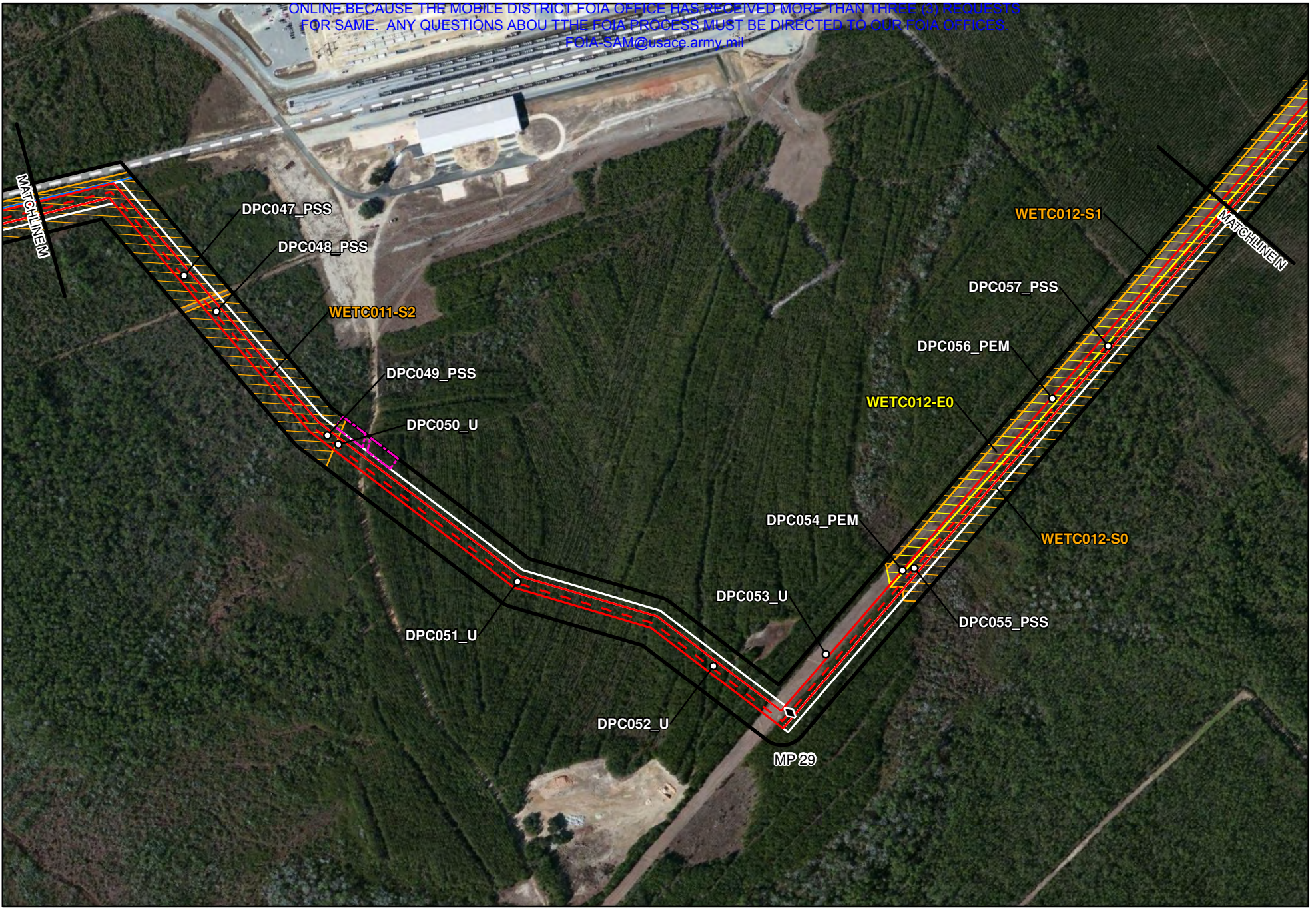
**PLAINS SOUTHCAP L.L.C.  
PLAN VIEW  
41-MILE-LONG TEN-MILE FACILITY TO  
PASCAGOULA PIPELINE PROJECT  
JACKSON COUNTY, MS**

- Centerline
- Permanent RoW
- Temporary RoW
- Additional Workspace
- 200' Survey
- Unserved Areas
- PEM
- PFO
- PSS
- EEM
- Streams
- Sample Point
- ◆ Milepost
- ⊕ HDD Entry/Exit

**COMMENT:**  
USACE MOBILE DISTRICT

Background: Bing Maps Hybrid (2012)  
Mapper: JR  
Approved By: Preliminary Draft  
SWCA Project No: 22932  
Date Produced: 8/20/2012  
Revision Date:

Coordinate System: NAD 1983 UTM Zone 16N  
Units: Feet US



Path: C:\Users\jrabalais\desktop\My\_Pipeline\WAP\Simx\Report Maps\PCN\PCN Plan Views.mxd

**SWCA**  
ENVIRONMENTAL CONSULTANTS  
Sheet 34 of 47

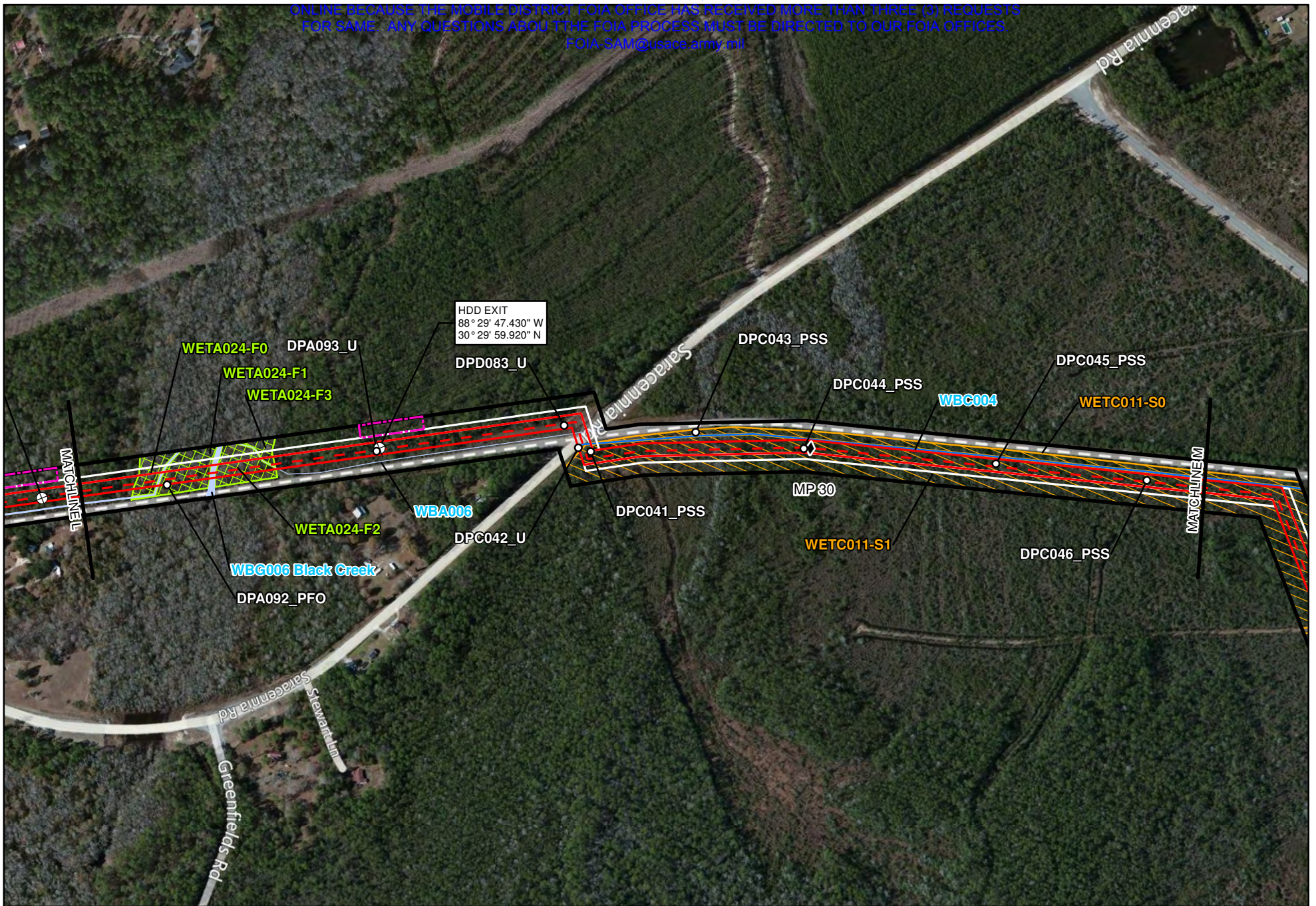
**PLAINS SOUTHCAP L.L.C.  
PLAN VIEW  
41-MILE-LONG TEN-MILE FACILITY TO  
PASCAGOULA PIPELINE PROJECT  
JACKSON COUNTY, MS**

- Centerline
- Permanent RoW
- Temporary RoW
- Additional Workspace
- 200' Survey
- Unserved Areas
- PEM
- PFO
- PSS
- EEM
- Streams
- Sample Point
- ◆ Milepost
- ⊕ HDD Entry/Exit

**COMMENT:**  
USACE MOBILE DISTRICT

Background: Bing Maps Hybrid (2012)  
Mapper: JR  
Approved By: Preliminary Draft  
SWCA Project No: 22332  
Date Produced: 8/20/2012  
Revision Date:

0 250 500 Feet  
Coordinate System: NAD 1983 UTM Zone 16N  
Units: Feet US



Path: C:\Users\abalas\Documents\My Projects\22932\_Pascagoula\_Pipeline\MAPS\mxd\Report Maps\PCN\PCN Plan Views.mxd

**SWCA**  
ENVIRONMENTAL CONSULTANTS  
Sheet 35 of 47

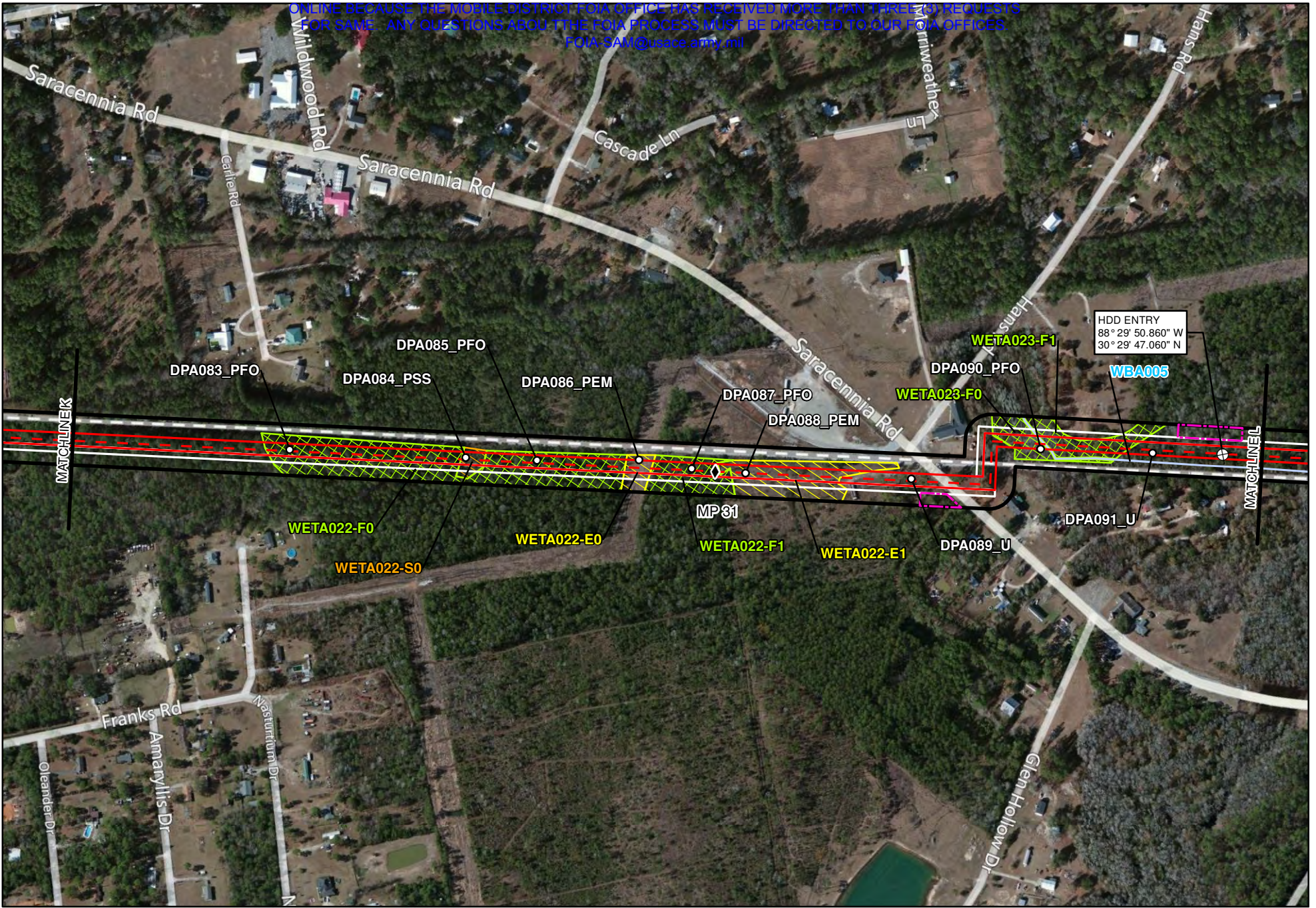
**PLAINS SOUTHCAP L.L.C.**  
**PLAN VIEW**  
**41-MILE-LONG TEN-MILE FACILITY TO PASCAGOULA PIPELINE PROJECT**  
**JACKSON COUNTY, MS**

- Centerline
- Permanent RoW
- Temporary RoW
- Additional Workspace
- 200' Survey
- Unsurveyed Areas
- PEM
- PFO
- PSS
- EEM
- Streams
- Sample Point
- ◆ Milepost
- ⊕ HDD Entry/Exit

**COMMENT:**  
USACE MOBILE DISTRICT

Background: Bing Maps Hybrid (2012)  
Mapper: JR  
Approved By: Preliminary Draft  
SWCA Project No: 22932  
Date Produced: 8/20/2012  
Revision Date:

0 250 500 Feet  
Coordinate System: NAD 1983 UTM Zone 16N  
Units: Foot US



Path: C:\Users\jrabalais\Desktop\My\_Pipeline\MAPS\mxd\Report Maps\PCN\PCN Plan Views.mxd



**PLAINS SOUTHCAP L.L.C.  
PLAN VIEW  
41-MILE-LONG TEN-MILE FACILITY TO  
PASCAGOULA PIPELINE PROJECT  
JACKSON COUNTY, MS**

- Centerline
- Permanent RoW
- Temporary RoW
- Additional Workspace
- 200' Survey
- Unsurveyed Areas
- PEM
- PFO
- PSS
- EEM
- Streams
- Sample Point
- ◆ Milepost
- ⊕ HDD Entry/Exit

COMMENT:  
USACE MOBILE DISTRICT

Background: Bing Maps Hybrid (2012)  
Mapper: JR  
Approved By: Preliminary Draft  
SWCA Project No: 22532  
Date Produced: 8/20/2012  
Revision Date:

0 250 500 Feet  
Coordinate System: NAD 1983 UTM Zone 16N  
Units: Foot US



Path: C:\Users\jrabalais\Desktop\My\_Pipeline\WAP\Simx\Report Maps\PCN\PCN Plan Views.mxd



**PLAINS SOUTHCAP L.L.C.  
PLAN VIEW  
41-MILE-LONG TEN-MILE FACILITY TO  
PASCAGOULA PIPELINE PROJECT  
JACKSON COUNTY, MS**

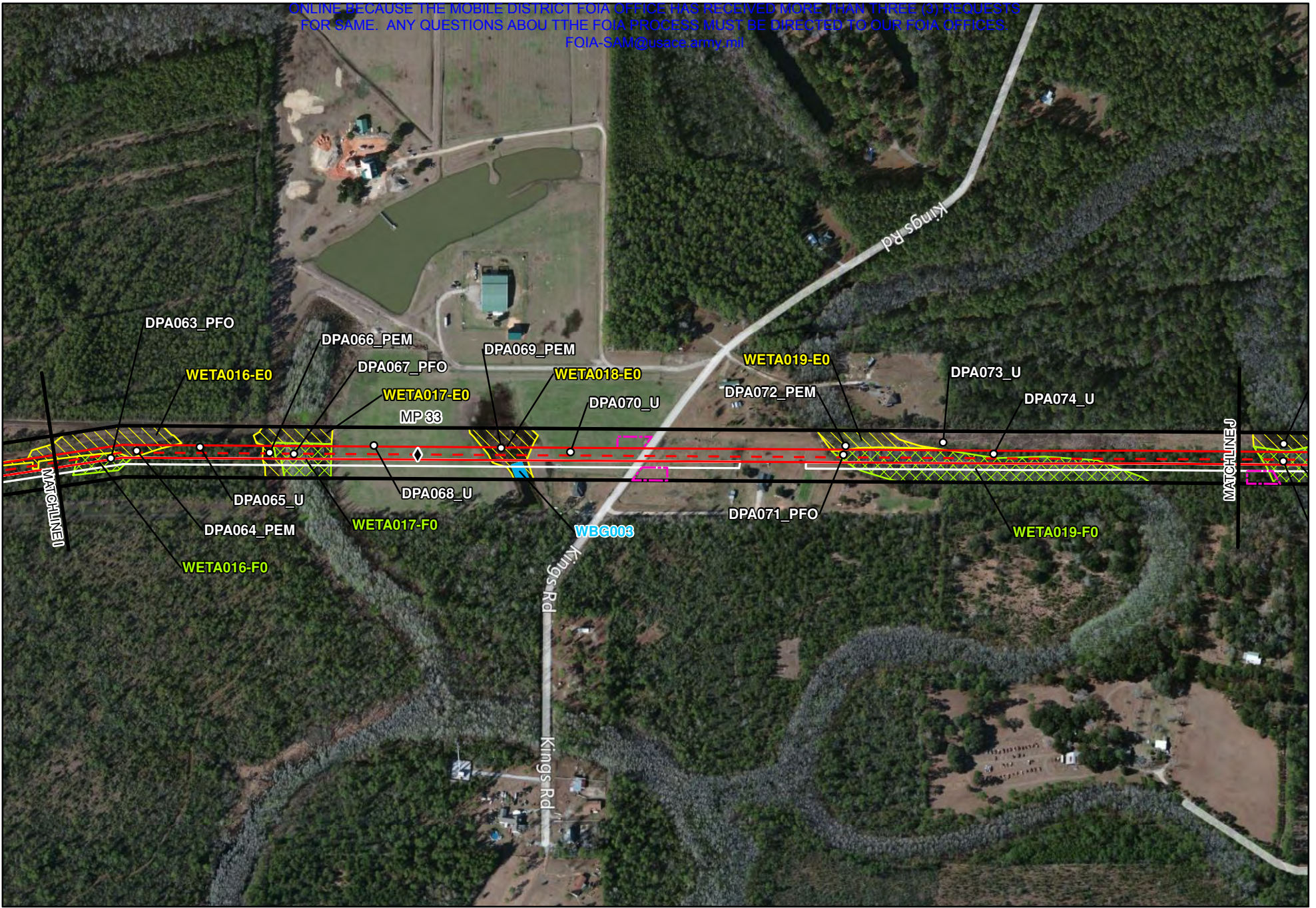
- Centerline
- Permanent RoW
- Temporary RoW
- Additional Workspace
- 200' Survey
- Unsurveyed Areas
- PEM
- PFO
- PSS
- EEM
- Streams
- Sample Point
- ◆ Milepost
- ⊕ HDD Entry/Exit

**COMMENT:**  
USACE MOBILE DISTRICT

Background: Bing Maps Hybrid (2012)  
Mapper: JR  
Approved By: Preliminary Draft  
SWCA Project No: 22332  
Date Produced: 8/20/2012  
Revision Date:

Coordinate System: NAD 1983 UTM Zone 16N  
Units: Feet US





Path: C:\Users\jrabalais\Desktop\My\_Pipeline\MAPS\mxd\Report Maps\PCN\PCN Plan Views.mxd



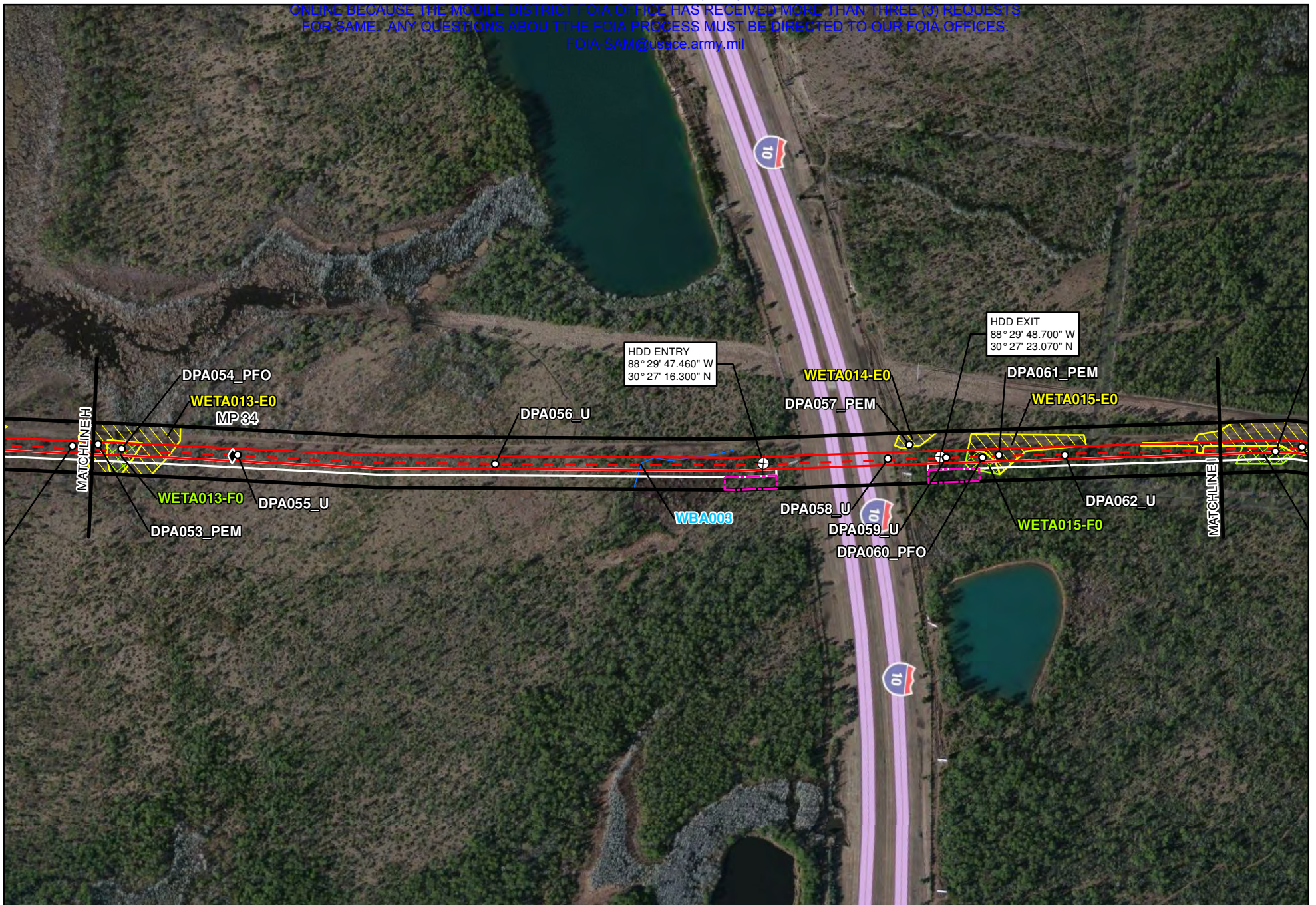
**PLAINS SOUTHCAP L.L.C.  
PLAN VIEW  
41-MILE-LONG TEN-MILE FACILITY TO  
PASCAGOULA PIPELINE PROJECT  
JACKSON COUNTY, MS**

- Centerline
- Permanent RoW
- Temporary RoW
- Additional Workspace
- 200' Survey
- Unsurveyed Areas
- PEM
- PFO
- PSS
- EEM
- Streams
- Sample Point
- ◆ Milepost
- ⊕ HDD Entry/Exit

**COMMENT:**  
USACE MOBILE DISTRICT

Background: Bing Maps Hybrid (2012)  
Mapper: JR  
Approved By: Preliminary Draft  
SWCA Project No: 22532  
Date Produced: 8/20/2012  
Revision Date:

Coordinate System: NAD 1983 UTM Zone 16N  
Units: Foot US



Path: C:\Users\jrabalais\Desktop\My\_Projects\22932\_Pascagoula\_Pipeline\MAPS\mxd\Report Maps\PCN\PCN Plan Views.mxd

**SWCA**  
 ENVIRONMENTAL CONSULTANTS  
 Sheet 39 of 47

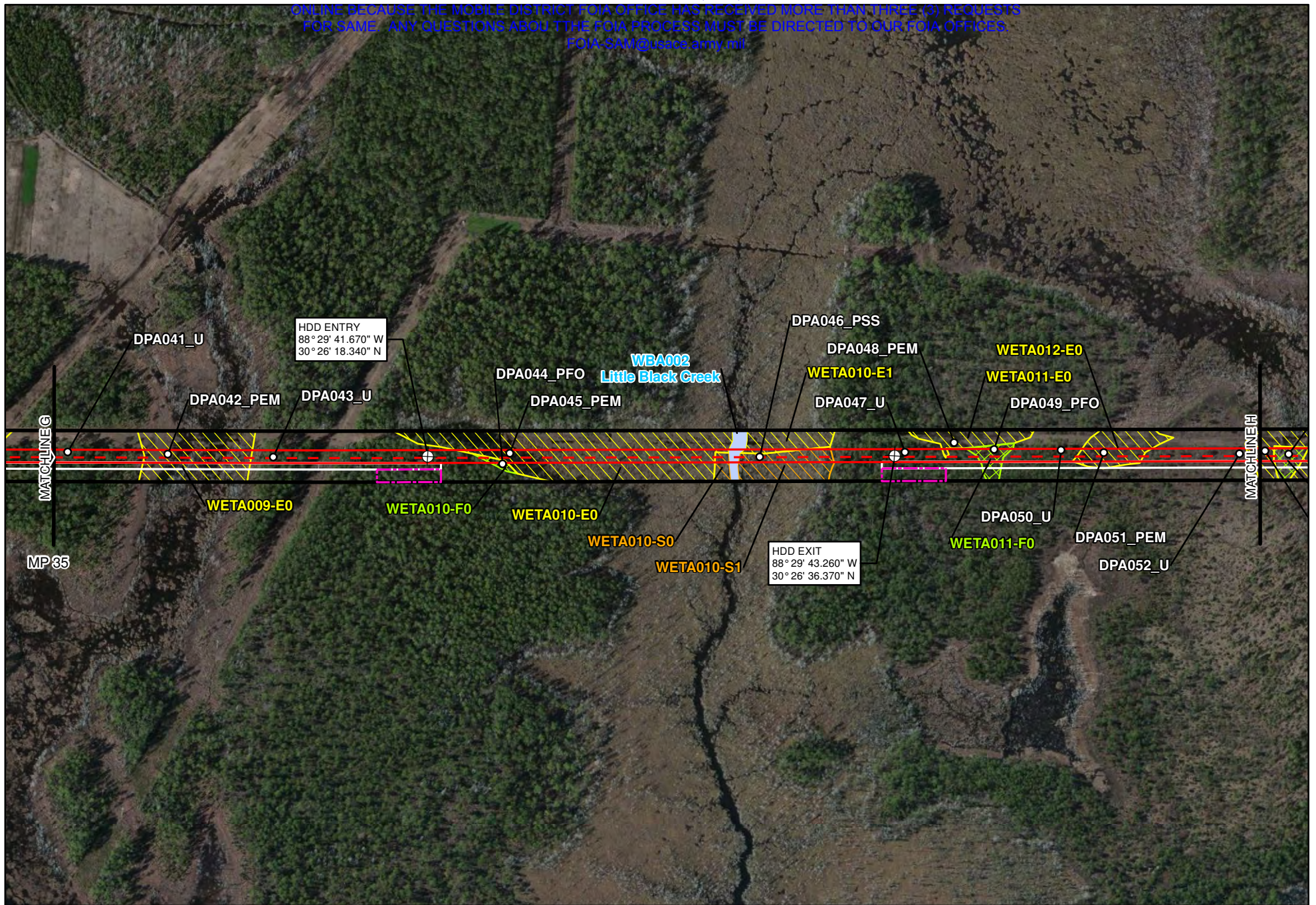
**PLAINS SOUTHCAP L.L.C.**  
**PLAN VIEW**  
**41-MILE-LONG TEN-MILE FACILITY TO**  
**PASCAGOULA PIPELINE PROJECT**  
**JACKSON COUNTY, MS**

Centerline	PEM	Sample Point
Permanent RoW	PFO	Milepost
Temporary RoW	PSS	HDD Entry/Exit
Additional Workspace	EEM	
200' Survey	Streams	
Unsurveyed Areas		

COMMENT:  
 USACE MOBILE DISTRICT

Background: Bing Maps Hybrid (2012)  
 Mapper: JR  
 Approved By: Preliminary Draft  
 SWCA Project No: 22932  
 Date Produced: 8/20/2012  
 Revision Date:

Coordinate System: NAD 1983 UTM Zone 16N  
 Units: Feet US



Path: C:\Users\abalais\Desktop\My\_Pipeline\WAS\mxd\Report Maps\PCN\PCN Plan Views.mxd

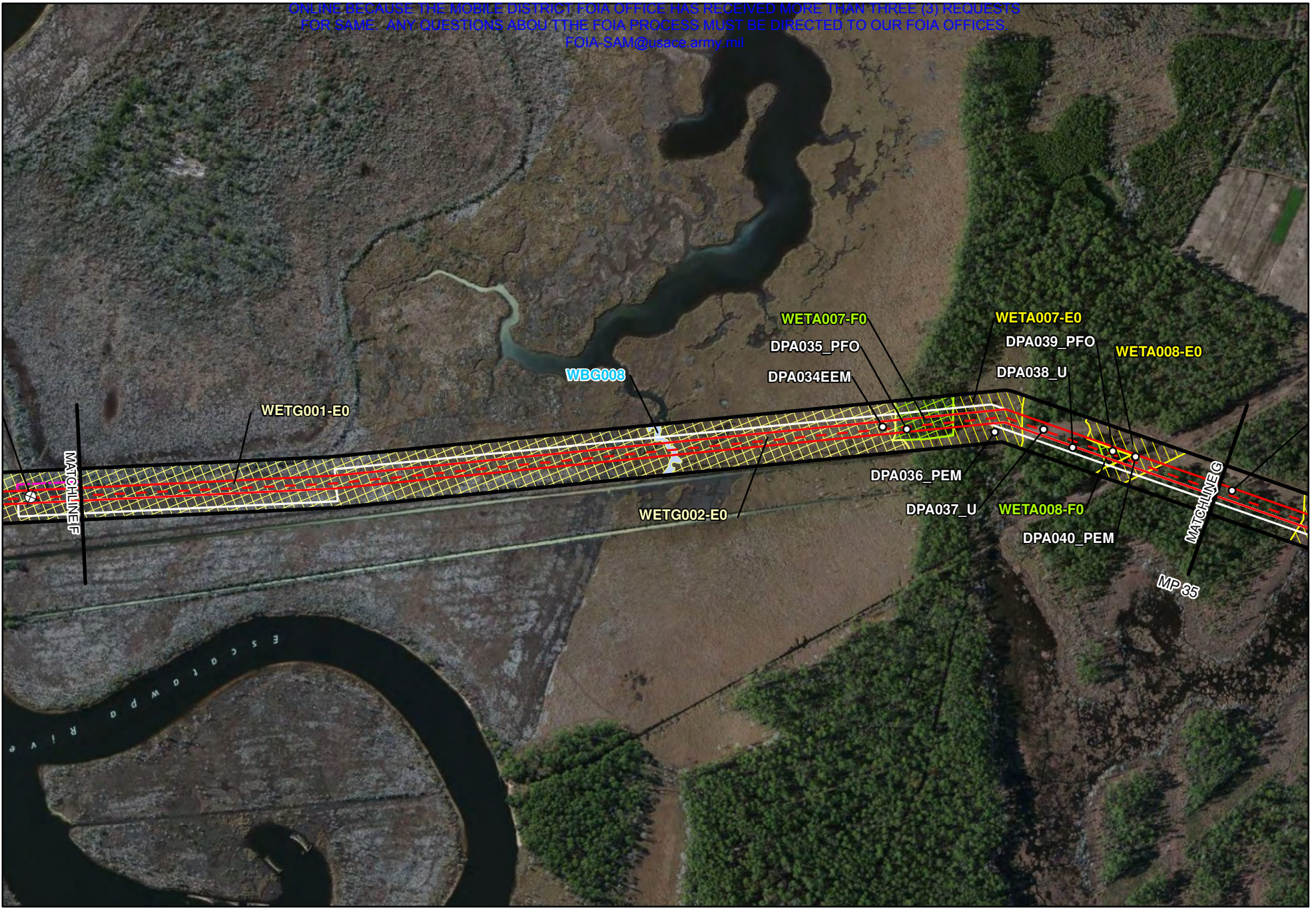
**SWCA**  
ENVIRONMENTAL CONSULTANTS  
Sheet 40 of 47

**PLAINS SOUTHCAP L.L.C.**  
**PLAN VIEW**  
**41-MILE-LONG TEN-MILE FACILITY TO**  
**PASCAGOULA PIPELINE PROJECT**  
**JACKSON COUNTY, MS**

Centerline	PEM	Sample Point
Permanent RoW	PFO	Milepost
Temporary RoW	PSS	HDD Entry/Exit
Additional Workspace	EEM	
200' Survey	Streams	
Unsurveyed Areas		

**COMMENT:**  
USACE MOBILE DISTRICT

Background: Bing Maps Hybrid (2012)  
Mapper: JR  
Approved By: Preliminary Draft  
SWCA Project No: 22932  
Date Produced: 8/20/2012  
Revision Date:  
  
0 250 500 Feet  
Coordinate System: NAD 1983 UTM Zone 16N  
Units: Foot US



**SWCA**  
ENVIRONMENTAL CONSULTANTS  
Sheet 41 of 47

**PLAINS SOUTHCAP L.L.C.**  
**PLAN VIEW**  
**41-MILE-LONG TEN-MILE FACILITY TO**  
**PASCAGOULA PIPELINE PROJECT**  
**JACKSON COUNTY, MS**

Centerline	PEM	Sample Point
Permanent RoW	PFO	Milepost
Temporary RoW	PSS	HDD Entry/Exit
Additional Workspace	EEM	
200' Survey	Streams	
Unsurveyed Areas		

COMMENT:  
USACE MOBILE DISTRICT

Background: Bing Maps Hybrid (2012)  
Mapper: JR  
Approved By: Preliminary Draft  
SWCA Project No: 22932  
Date Produced: 8/20/2012  
Revision Date:

Coordinate System: NAD 1983 UTM Zone 16N  
Units: Feet US