

Path: C:\Users\jbalaski\Desktop\SWCA\_Pipeline\SWCA\_Pipeline\SWCA\_Summary\_Report\_Map\T&E\_Plans\_View.mxd



Sheet 11 of 22

**PLAINS SOUTHCAP L.L.C.  
T & E MAPS  
41-MILE-LONG TEN-MILE FACILITY TO  
PASCAGOULA PIPELINE PROJECT  
MOBILE COUNTY, AL**

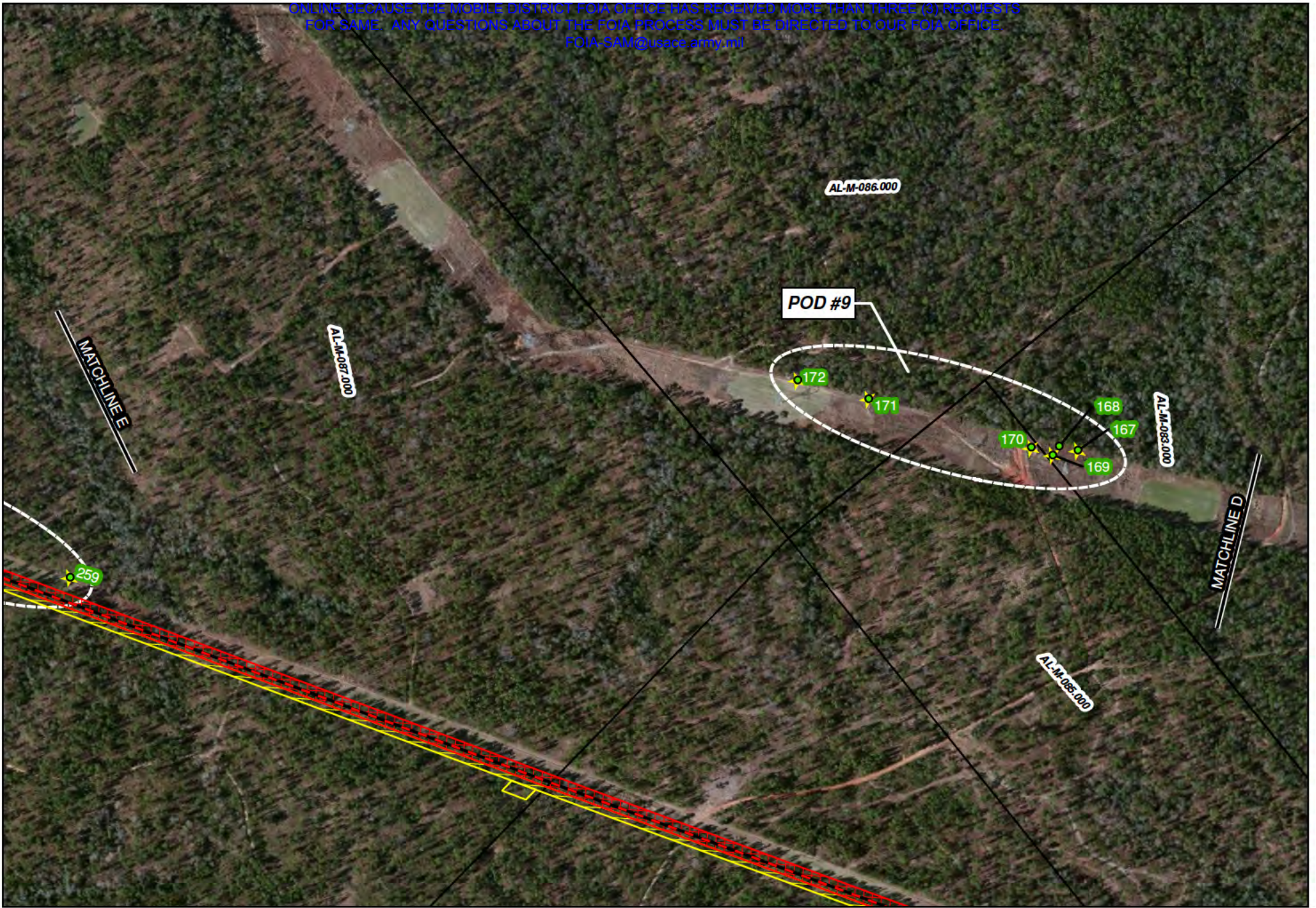
Legend		
Centerline	HDD RoW	Active Burrow
Permanent RoW	Burrow, Inside Work Corridor	Burrow, Outside Work Corridor
Temporary RoW	Streams	
Additional Workspace		

COMMENT:  
USACE MOBILE DISTRICT

Background: Bing Maps Hybrid (2012)  
Mapper: JR  
Approved By: EM  
SWCA Project No: 22932  
Date Produced: 9/24/2012  
Revision Date:

Coordinate System: NAD 1983 UTM Zone 18N  
Units: Feet US





Path: C:\Users\jalsaki\Desktop\AW\_Projects\42832\_Pascagoula\_Pipeline\AWP\_Summary\_Report\_Map\T&E\_Plan\_View.mxd



**PLAINS SOUTHCAP L.L.C.  
T & E MAPS  
41-MILE-LONG TEN-MILE FACILITY TO  
PASCAGOULA PIPELINE PROJECT  
MOBILE COUNTY, AL**

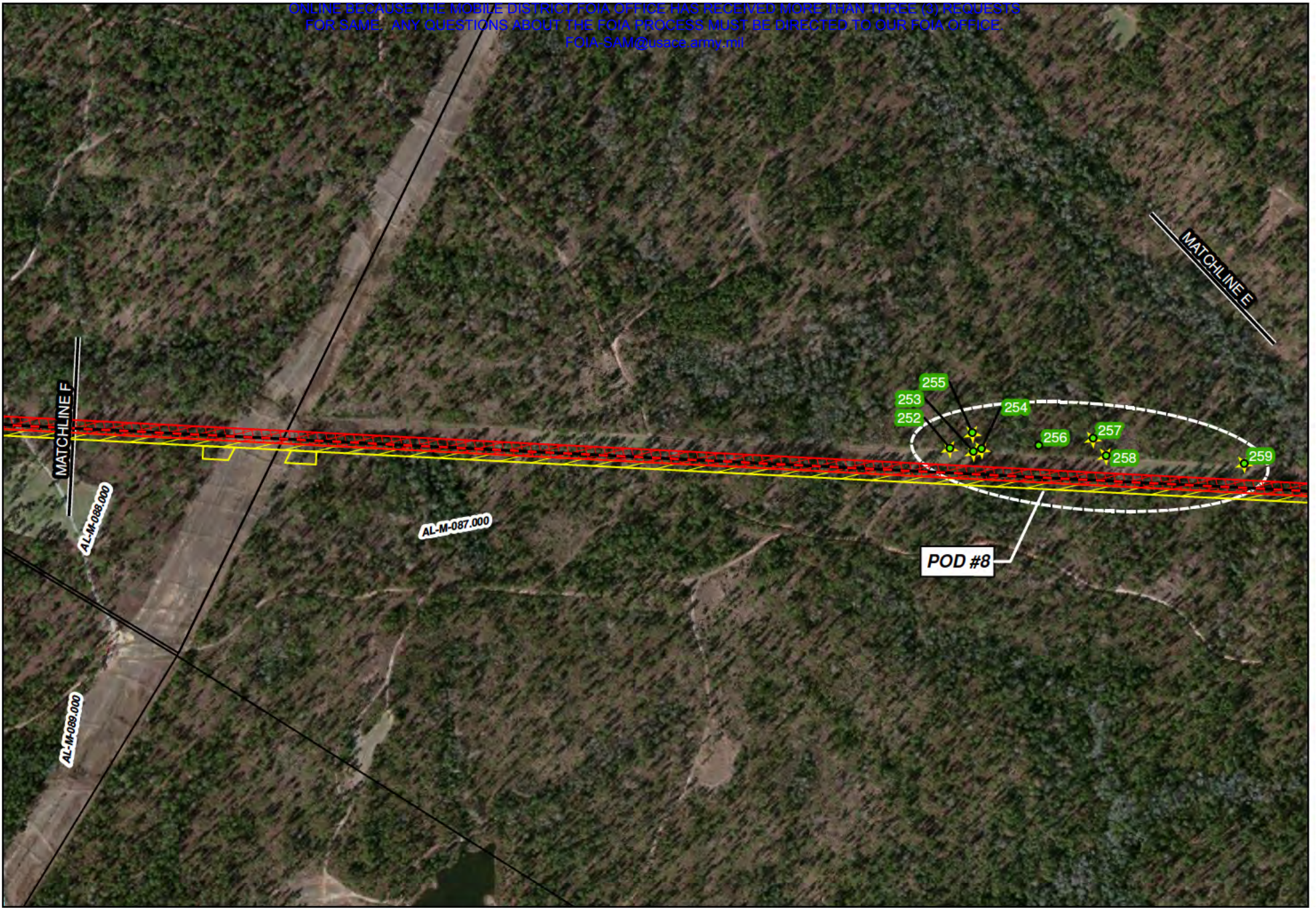
Legend		
Centerline	HDD RoW	Active Burrow
Permanent RoW	Burrow, Inside Work Corridor	
Temporary RoW	Burrow, Outside Work Corridor	
Additional Workspace	Streams	

COMMENT:  
USACE MOBILE DISTRICT

Background: Bing Maps Hybrid (2012)  
Mapper: JR  
Approved By: EM  
SWCA Project No: 22832  
Date Produced: 9/24/2012  
Revision Date:

Coordinate System: NAD 1983 UTM Zone 16N  
Units: Feet US





Path: C:\Users\jbalaski\Desktop\SWCA\_Pipeline\SWCA\_Pipeline\Map\T&E\T&E\_Plan\_View.mxd

Legend		
Centerline	HDD RoW	Active Burrow
Permanent RoW	Burrow, Inside Work Corridor	
Temporary RoW	Burrow, Outside Work Corridor	
Additional Workspace	Streams	

COMMENT:  
USACE MOBILE DISTRICT

Background: Bing Maps Hybrid (2012)  
Mapper: JR  
Approved By: EM  
SWCA Project No: 22022  
Date Produced: 9/24/2012  
Revision Date:

Coordinate System: NAD 1983 UTM Zone 16N  
Units: Foot US





Path: C:\Users\jbalaski\Desktop\SWCA\_Pipeline\SWCA\_Summary\_Report\_Map\T&E\_Plans\_View.mxd



Sheet 14 of 22

**PLAINS SOUTHCAP L.L.C.**  
**T & E MAPS**  
**41-MILE-LONG TEN-MILE FACILITY TO**  
**PASCAGOULA PIPELINE PROJECT**  
**MOBILE COUNTY, AL**

Legend		
Centerline	HDD RoW	Active Burrow
Permanent RoW	Burrow, Inside Work Corridor	
Temporary RoW	Burrow, Outside Work Corridor	
Additional Workspace	Streams	

COMMENT:  
 USACE MOBILE DISTRICT



Background: Bing Maps Hybrid (2012)  
 Mapper: JR  
 Approved By: EM  
 SWCA Project No: 22932  
 Date Produced: 9/24/2012  
 Revision Date:  
 0 250 500 Feet  
 Coordinate System: NAD 1983 UTM Zone 18N  
 Units: Foot US





Path: C:\Users\jalsaki\Desktop\Map\_Reports\41-Mile-Pipeline\Map\_Reports\T&E\T&E\_Plan\_View.mxd



Sheet 15 of 22

**PLAINS SOUTHCAP L.L.C.  
T & E MAPS  
41-MILE-LONG TEN-MILE FACILITY TO  
PASCAGOULA PIPELINE PROJECT  
MOBILE COUNTY, AL**

**Legend**

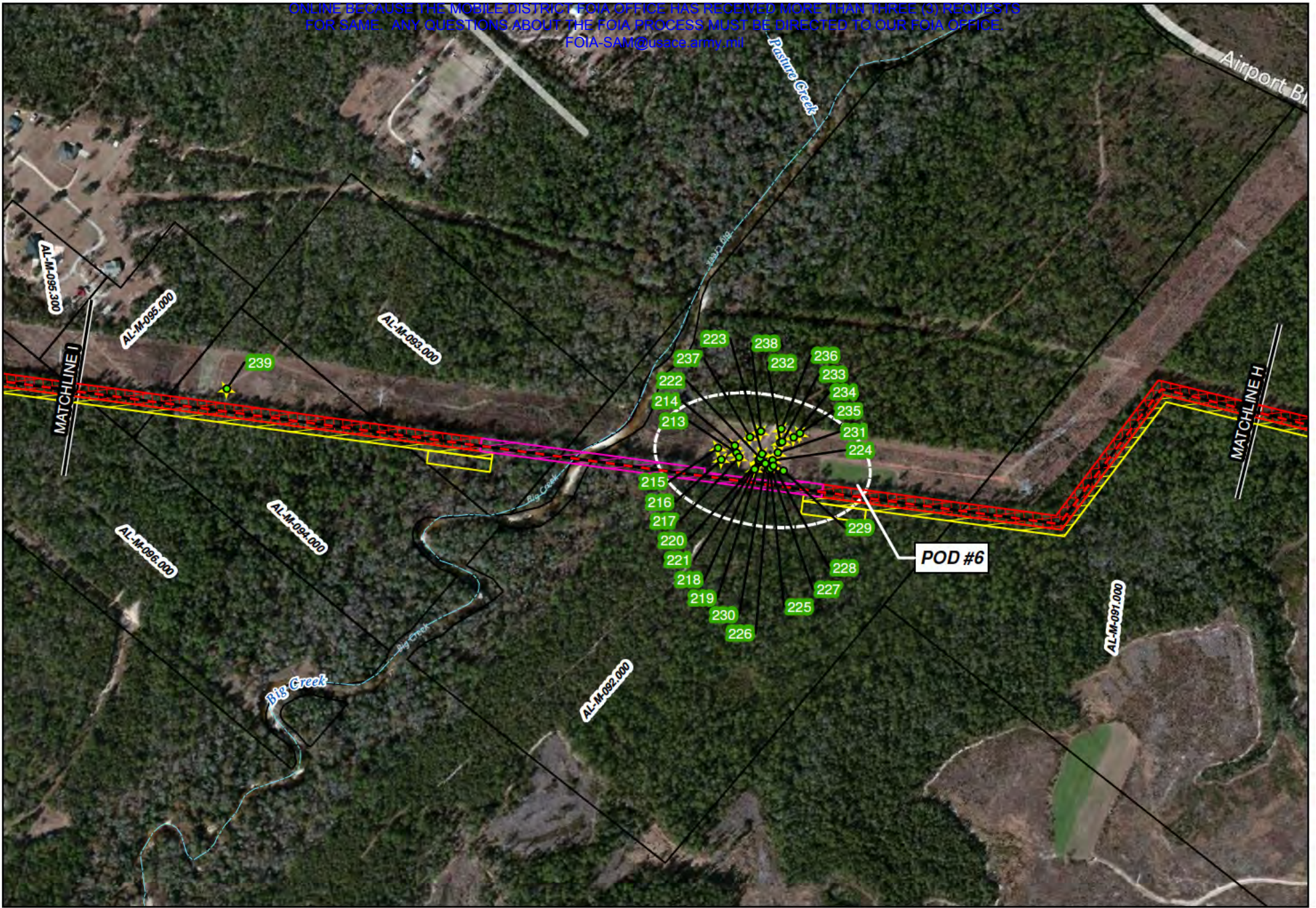
- Centerline
- Permanent RoW
- Temporary RoW
- Additional Workspace
- HDD RoW
- Burrow, Inside Work Corridor
- Burrow, Outside Work Corridor
- Streams
- Active Burrow

COMMENT:  
USACE MOBILE DISTRICT



Background: Bing Maps Hybrid (2012)  
Mapper: JR  
Approved By: EM  
SWCA Project No: 22032  
Date Produced: 9/24/2012  
Revision Date:  
0 250 500 Feet  
Coordinate System: NAD 1983 UTM Zone 16N  
Units: Foot US





Path: C:\Users\jbalaski\Desktop\Map\Projects\22932\_Pascagoula\_Pipeline\Map\Report Maps\T&E Plan Views.mxd



Sheet 16 of 22

**PLAINS SOUTHCAP L.L.C.**  
**T & E MAPS**  
**41-MILE-LONG TEN-MILE FACILITY TO**  
**PASCAGOULA PIPELINE PROJECT**  
**MOBILE COUNTY, AL**

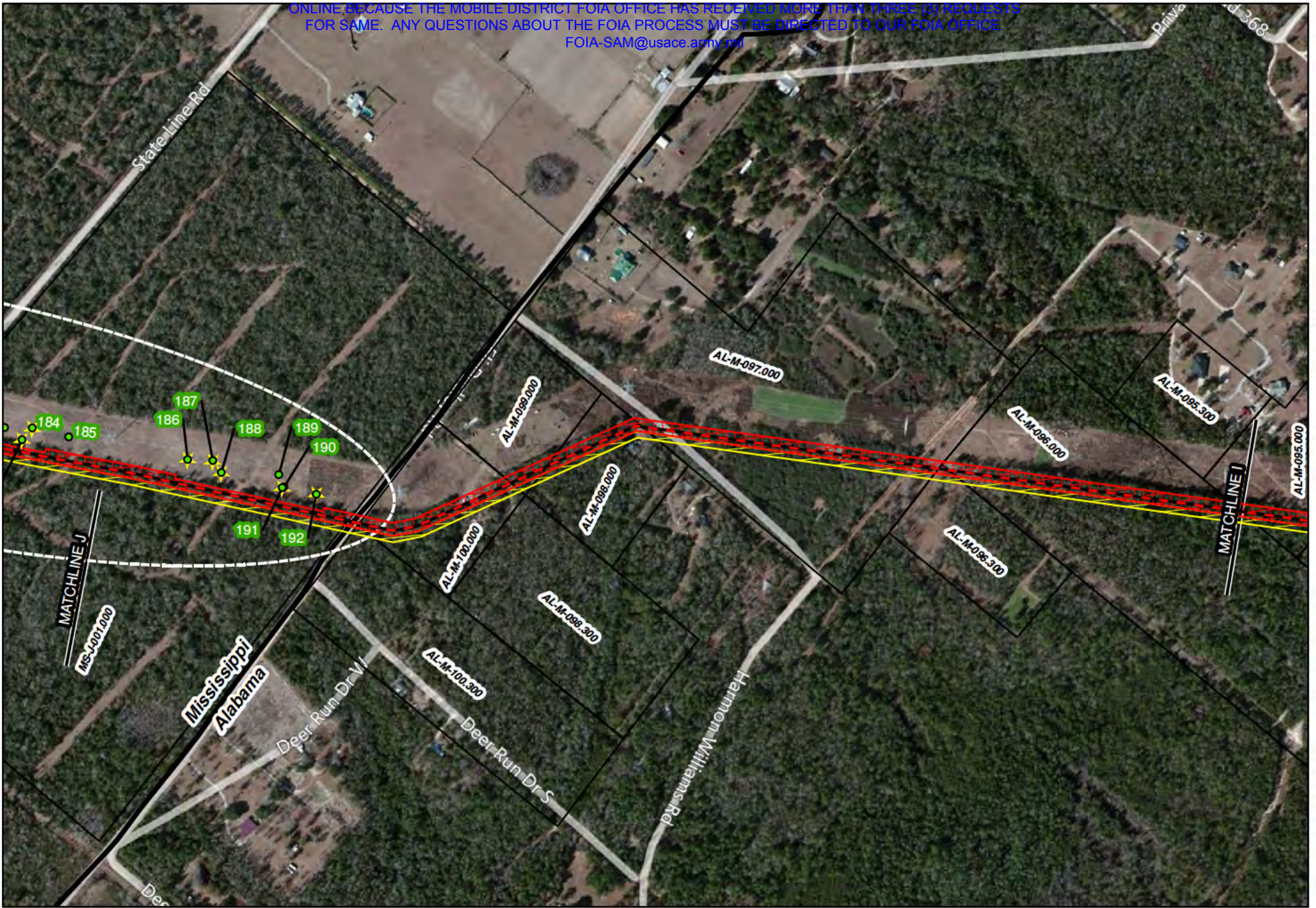
Legend			
	Centerline		Active Burrow
	Permanent RoW		Burrow, Inside Work Corridor
	Temporary RoW		Burrow, Outside Work Corridor
	Additional Workspace		Streams
	HDD RoW		

COMMENT:  
 USACE MOBILE DISTRICT



Background: Bing Maps Hybrid (2012)  
 Mapper: JR  
 Approved By: EM  
 SWCA Project No: 22932  
 Date Produced: 9/24/2012  
 Revision Date:  
 0 250 500 Feet  
 Coordinate System: NAD 1983 UTM Zone 16N  
 Units: Foot US





Path: C:\Users\jstataki\Desktop\SWCA\_Pascagoula\_Pipeline\SWCA\_Summary\_Report\_Map\T&E\_Plans\_View.mxd

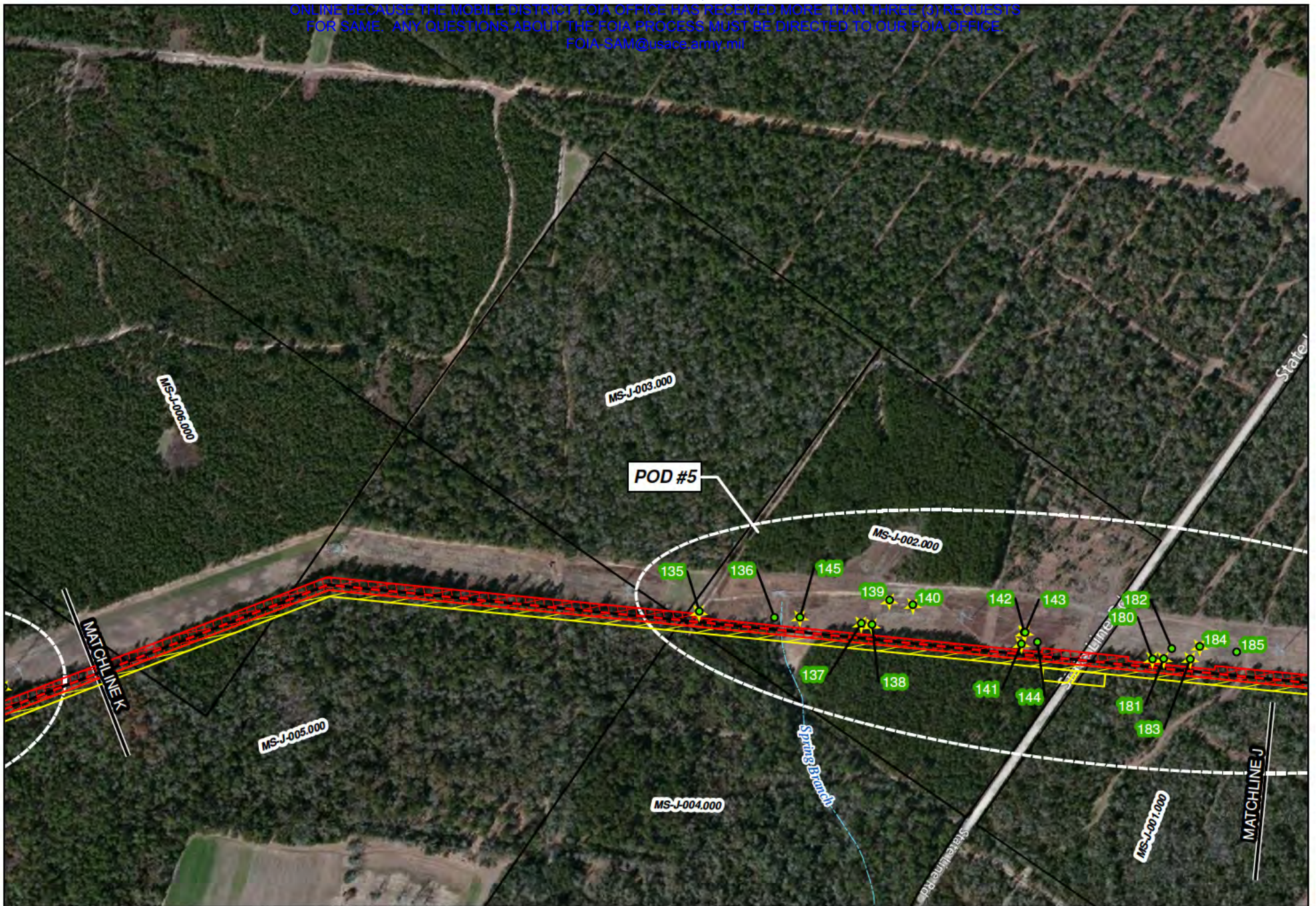
Legend		
Centerline	HDD RoW	Active Burrow
Permanent RoW	Burrow, Inside Work Corridor	Burrow, Outside Work Corridor
Temporary RoW	Streams	
Additional Workspace		

COMMENT:  
USACE MOBILE DISTRICT

Background: Bing Maps Hybrid (2012)  
Mapper: JR  
Approved By: EM  
SWCA Project No: 22932  
Date Produced: 9/24/2012  
Revision Date:

Coordinate System: NAD 1983 UTM Zone 16N  
Units: Foot US





Path: C:\Users\jtabataki\Desktop\SWCA\_Pascagoula\_Pipeline\MS\_Summary\_Report\_Map\T&E\_Plan\_View.mxd



**PLAINS SOUTHCAP L.L.C.  
T & E MAPS  
41-MILE-LONG TEN-MILE FACILITY TO  
PASCAGOULA PIPELINE PROJECT  
JACKSON COUNTY, MS**

**Legend**

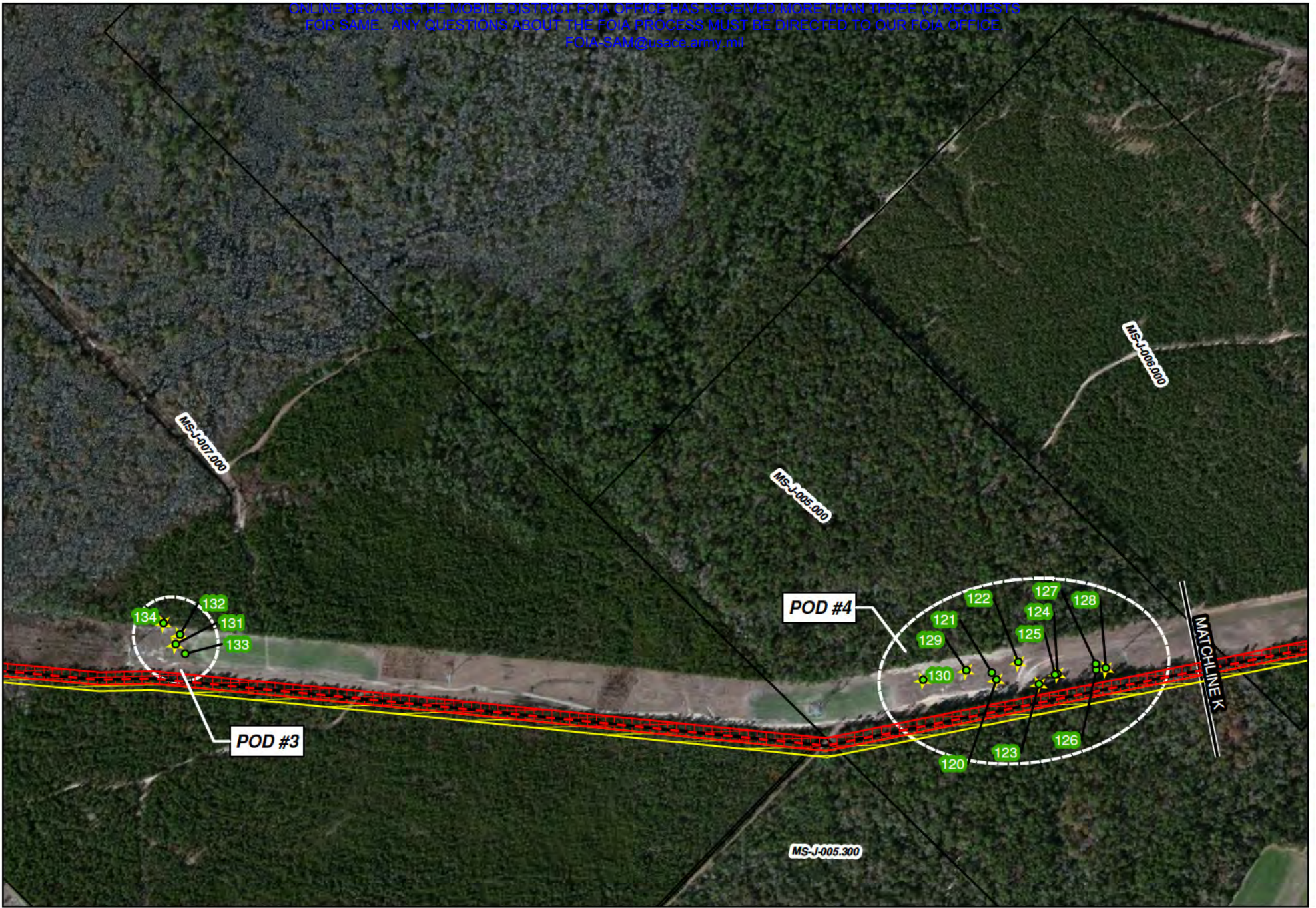
- Centerline
- Permanent RoW
- Temporary RoW
- Additional Workspace
- HDD RoW
- Burrow, Inside Work Corridor
- Burrow, Outside Work Corridor
- Streams
- Active Burrow

COMMENT:  
USACE MOBILE DISTRICT



Background: Bing Maps Hybrid (2012)  
Mapper: JR  
Approved By: EM  
SWCA Project No: 22932  
Date Produced: 9/24/2012  
Revision Date:  
0 250 500 Feet  
Coordinate System: NAD 1983 UTM Zone 18N  
Units: Foot US





Path: C:\Users\jstataki\Desktop\SWCA\_Pipeline\SWCA\_Summary\_Report\_Map\T&E\_Plan\_View.mxd



**PLAINS SOUTHCAP L.L.C.  
T & E MAPS  
41-MILE-LONG TEN-MILE FACILITY TO  
PASCAGOULA PIPELINE PROJECT  
JACKSON COUNTY, MS**

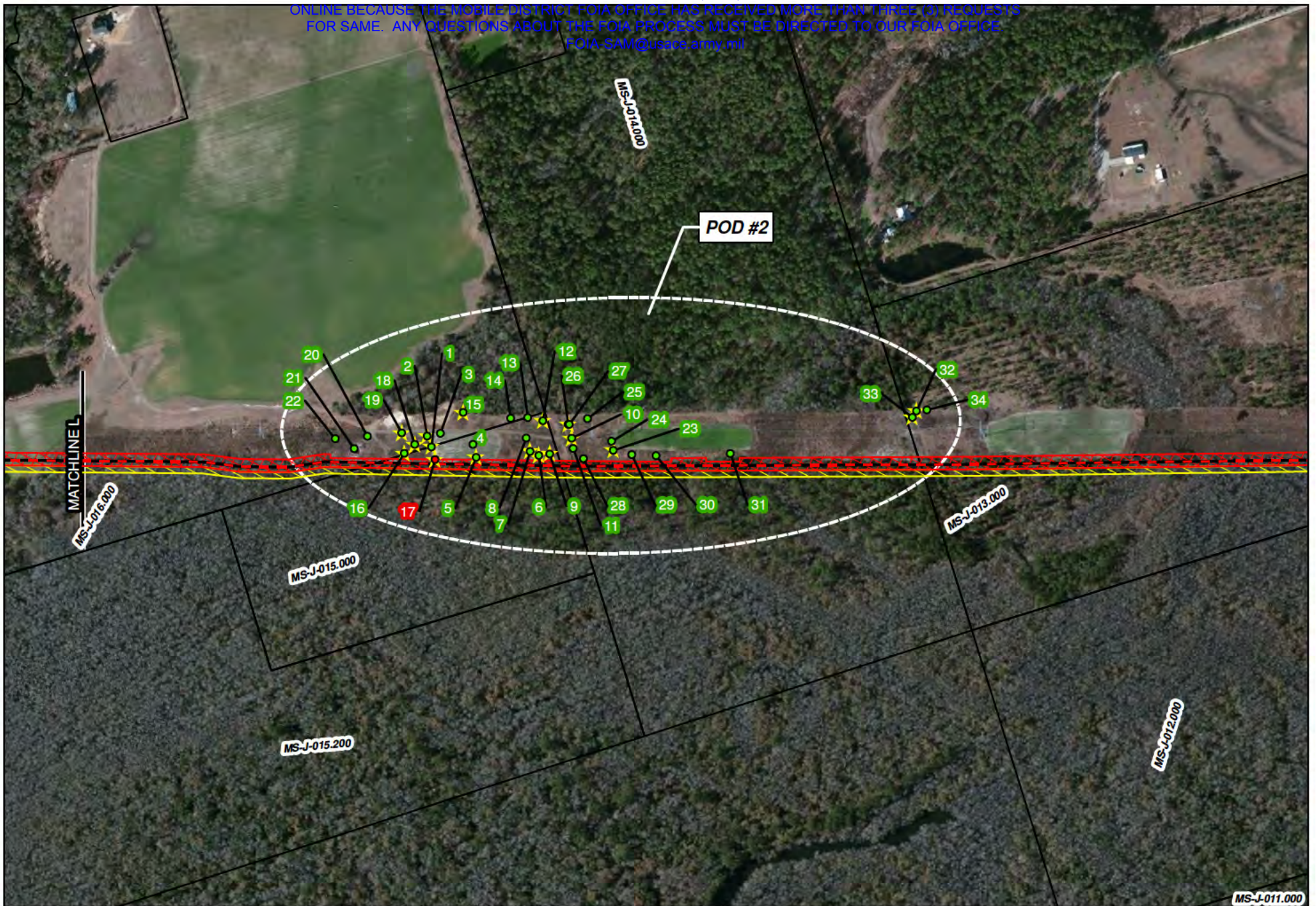
Legend		
Centerline	HDD RoW	Active Burrow
Permanent RoW	Burrow, Inside Work Corridor	
Temporary RoW	Burrow, Outside Work Corridor	
Additional Workspace	Streams	

COMMENT:  
USACE MOBILE DISTRICT

Background: Bing Maps Hybrid (2012)  
Mapper: JR  
Approved By: EM  
SWCA Project No: 22922  
Date Produced: 9/24/2012  
Revision Date:

0 250 500 Feet  
Coordinate System: NAD 1983 UTM Zone 16N  
Units: Foot US





Path: C:\Users\jabalaki\OneDrive\My Projects\428332\_Pascagoula\_Pipeline\Map\Report Maps\T&E Plan Views.mxd



Sheet 20 of 22

**PLAINS SOUTHCAP L.L.C.  
T & E MAPS  
41-MILE-LONG TEN-MILE FACILITY TO  
PASCAGOULA PIPELINE PROJECT  
JACKSON COUNTY, MS**

**Legend**

- Centerline
- Permanent RoW
- Temporary RoW
- Additional Workspace
- HDD RoW
- Burrow, Inside Work Corridor
- Burrow, Outside Work Corridor
- Streams
- Active Burrow

COMMENT:  
USACE MOBILE DISTRICT



Background: Bing Maps Hybrid (2012)  
Mapper: JR  
Approved By: EM  
SWCA Project No: 22832  
Date Produced: 9/24/2012  
Revision Date:  
0 250 500 Feet  
Coordinate System: NAD 1983 UTM Zone 18N  
Units: Feet US





Path: C:\Users\jbalaski\Desktop\SWCA\_Pipeline\SWCA\_Summary\_Report\_Map\T&E\_Plan\_View.mxd



**PLAINS SOUTHCAP L.L.C.  
T & E MAPS  
41-MILE-LONG TEN-MILE FACILITY TO  
PASCAGOULA PIPELINE PROJECT  
JACKSON COUNTY, MS**

**Legend**

- Centerline
- Permanent RoW
- Temporary RoW
- Additional Workspace
- HDD RoW
- Burrow, Inside Work Corridor
- Burrow, Outside Work Corridor
- Streams
- Active Burrow

COMMENT:  
USACE MOBILE DISTRICT



Background: Bing Maps Hybrid (2012)  
Mapper: JR  
Approved By: EM  
SWCA Project No: 22932  
Date Produced: 9/24/2012  
Revision Date:  
0 250 500 Feet  
Coordinate System: NAD 1983 UTM Zone 16N  
Units: Foot US



AS REQUIRED BY THE FREEDOM OF INFORMATION ACT (FOIA) THIS FILE IS BEING MADE AVAILABLE  
ONLINE BECAUSE THE MOBILE DISTRICT FOIA OFFICE HAS RECEIVED MORE THAN THREE (3) REQUESTS  
FOR SAME. ANY QUESTIONS ABOUT THE FOIA PROCESS MUST BE DIRECTED TO OUR FOIA OFFICE.  
FOIA-SAM@usace.army.mil

---

---

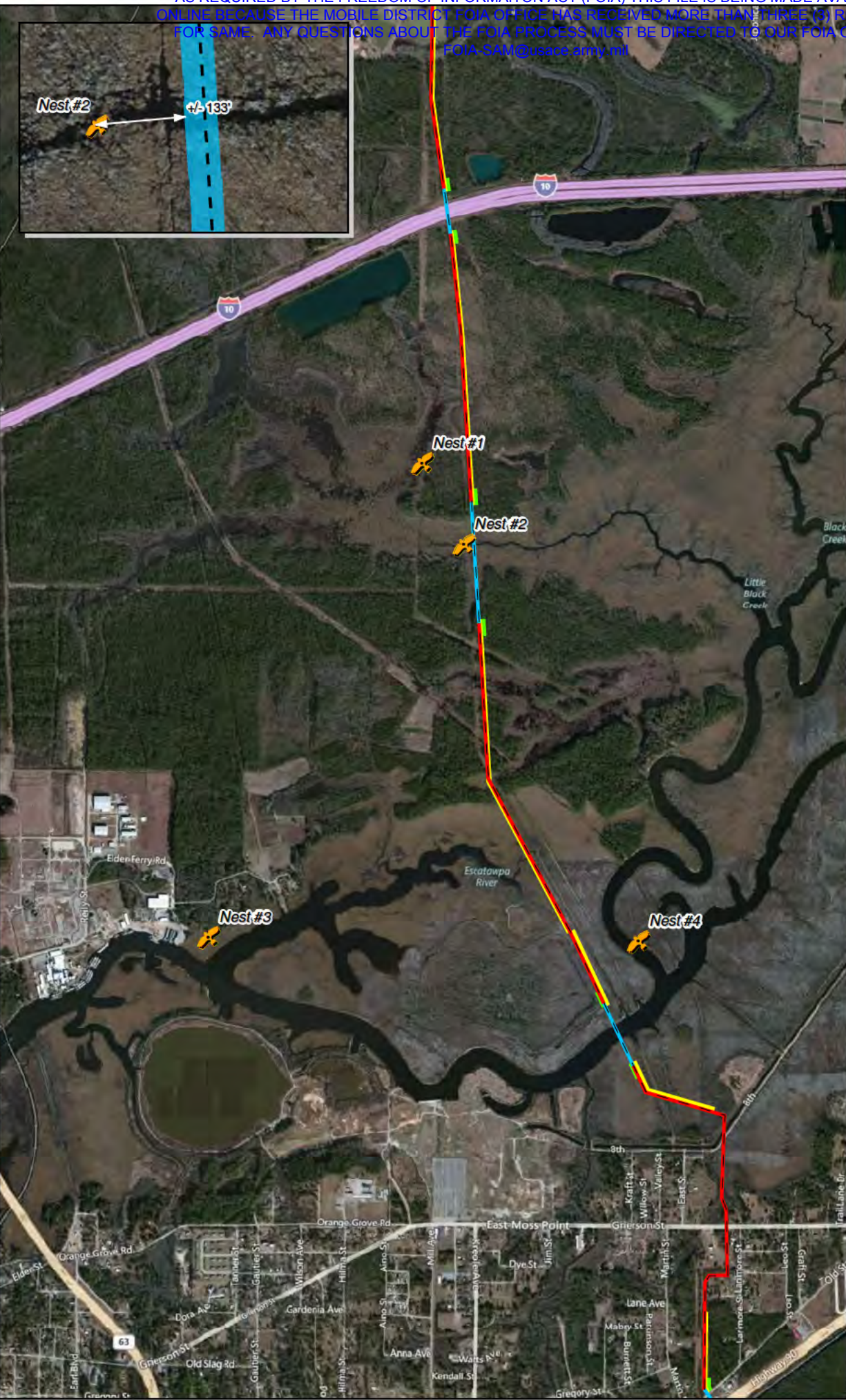
**Appendix C**  
**Bald Eagle Survey Map**

---

---



**PLAINS  
SOUTHCAP L.L.C.**  
**BALD EAGLE SURVEY**  
**41-MILE-LONG TEN-MILE FACILITY TO PASCAGOULA PIPELINE PROJECT**  
**JACKSON COUNTY, MS**  
**MOBILE COUNTY, AL**



- Nest #1\***  
88° 29' 51.88" W 30° 26' 42.12" N
- Nest #2\***  
88° 29' 44.51" W 30° 26' 30.09" N
- Nest #3**  
88° 30' 27.65" W 30° 25' 30.98" N
- Nest #4**  
88° 29' 13.52" W 30° 25' 31.23" N

\*Nests 1 & 2 may be Osprey Nests.

**Legend**

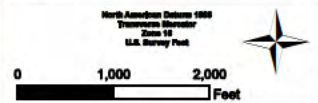
- Potential Bald Eagle Nest
- Centerline

**Construction Servitudes**

- Additional Workspace
- Permanent RoW
- HDD
- Temporary RoW



Background/USA Topo maps (ESRI Basecamp)  
Topographic Quad Name:  
Mapset: J8  
Approved By: EM  
SWCA Project No: 22992  
Date Produced: 08/24/2012  
Revision Date:



SWCA, Environmental Consultants  
7255 Langley, Suite 100  
Houston, Texas 77040  
(713) 954-8900 phone  
(713) 954-8900 fax  
www.swca.com





AS REQUIRED BY THE FREEDOM OF INFORMATION ACT (FOIA) THIS FILE IS BEING MADE AVAILABLE ONLINE BECAUSE THE MOBILE DISTRICT FOIA OFFICE HAS RECEIVED MORE THAN THREE (3) REQUESTS FOR SAME. ANY QUESTIONS ABOUT THE FOIA PROCESS MUST BE DIRECTED TO OUR FOIA OFFICE.  
FOIA-SAM@usace.army.mil

---

---

## **Appendix D**

### **Gopher Tortoise Survey Photographic Log**

---

---