

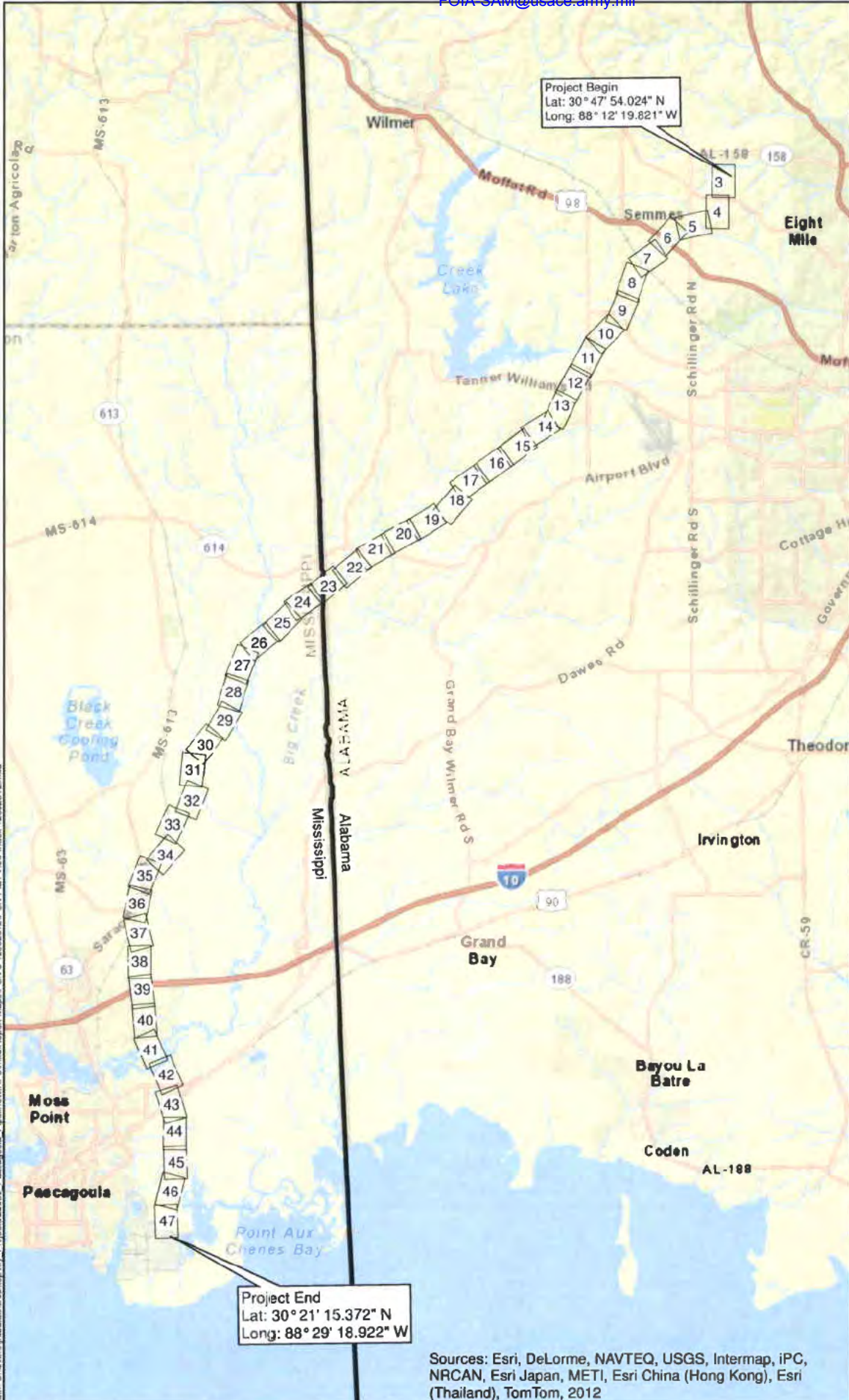
FOIA_SAM@usace.army.mil

PLAINS SOUTHCAP L.L.C.

PLAN VIEW INDEX 41-MILE-LONG TEN-MILE FACILITY TO PASCAGOULA PIPELINE PROJECT

JACKSON COUNTY, MS
MOBILE COUNTY, AL

Page 2 of 47



Project Begin
Lat: 30° 47' 54.024" N
Long: 88° 12' 19.821" W

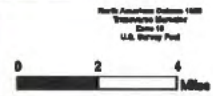
Project End
Lat: 30° 21' 15.372" N
Long: 88° 29' 18.922" W

LEGEND

Plan View



Background: USA Topo maps (ESRI Basemap)
Topographic Contour Name:
Mapper: JH
Approved By: EIM
SWCA Project No: 22922
Date Produced: 12/06/2012
Revision Date:



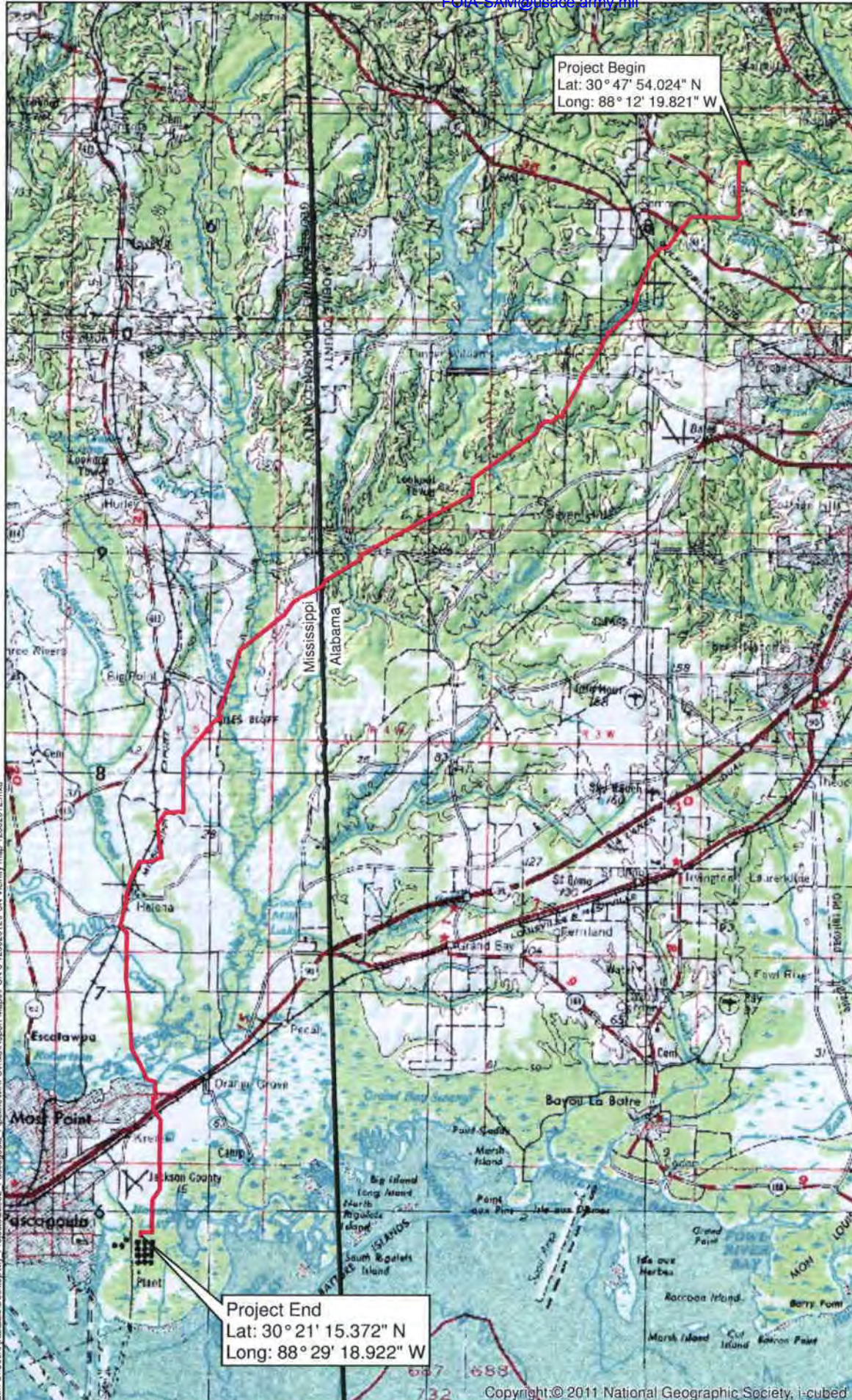
SWCA, Environmental Consultants
7288 Langtry, Suite 100
Houston, Texas 77060
(713) 951-9900 phone
(713) 951-9900 fax
www.swca.com



Sources: Esri, DeLorme, NAVTEQ, USGS, Intermap, iPC, NRCAN, Esri Japan, METI, Esri China (Hong Kong), Esri (Thailand), TomTom, 2012

Path: C:\Users\jrabalais\Desktop\My Projects\22922 - Pascagoula Pipeline\MAPS\mxd\Report Maps\PCN 3 12062012\PCN Plan View Index_12062012.mxd

FOIA_SAM@usace.army.mil




**PLAINS
SOUTHCAP L.L.C.**

**VICINITY MAP
41-MILE-LONG TEN-MILE
FACILITY TO PASCAGOULA
PIPELINE PROJECT**

**JACKSON COUNTY, MS
MOBILE COUNTY, AL**

Page 1 of 47

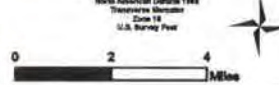
LEGEND

 Project Area



Background: USA Topo maps (ESRI BaseMap)
 Topographic Grid Name:
 Mapper: JR
 Approved By: EM
 SWCA Project No: 22812
 Data Produced: 12/07/08/12
 Revision Date:

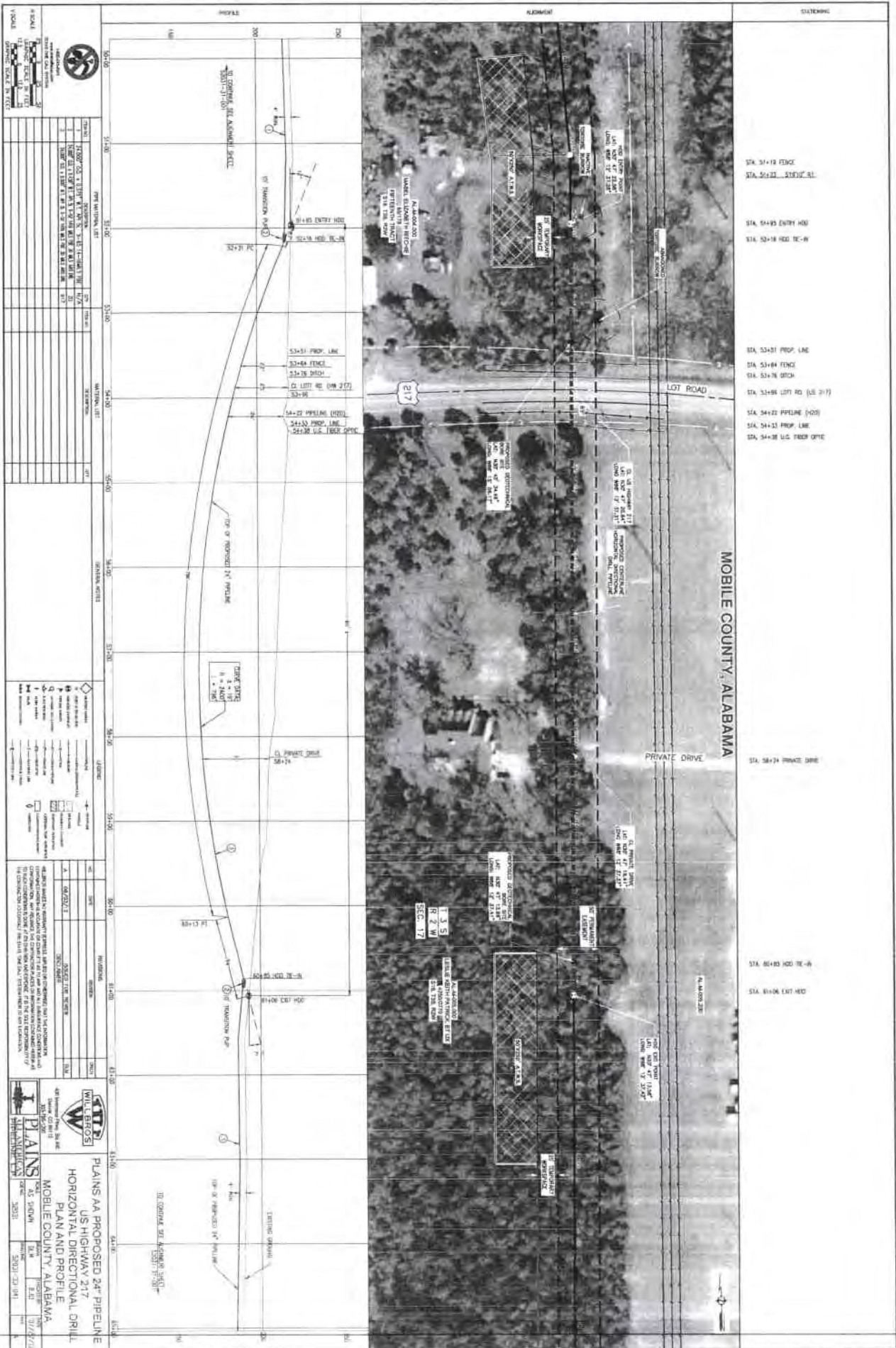
North American Datum 1983
 Transverse Mercator
 Zone 18
 U.S. Survey Feet



SWCA, Environmental Consultants
 7288 Langtry, Suite 100
 Houston, Texas 77046
 (713) 834-8900 phone
 (713) 834-8988 fax
 www.swca.com



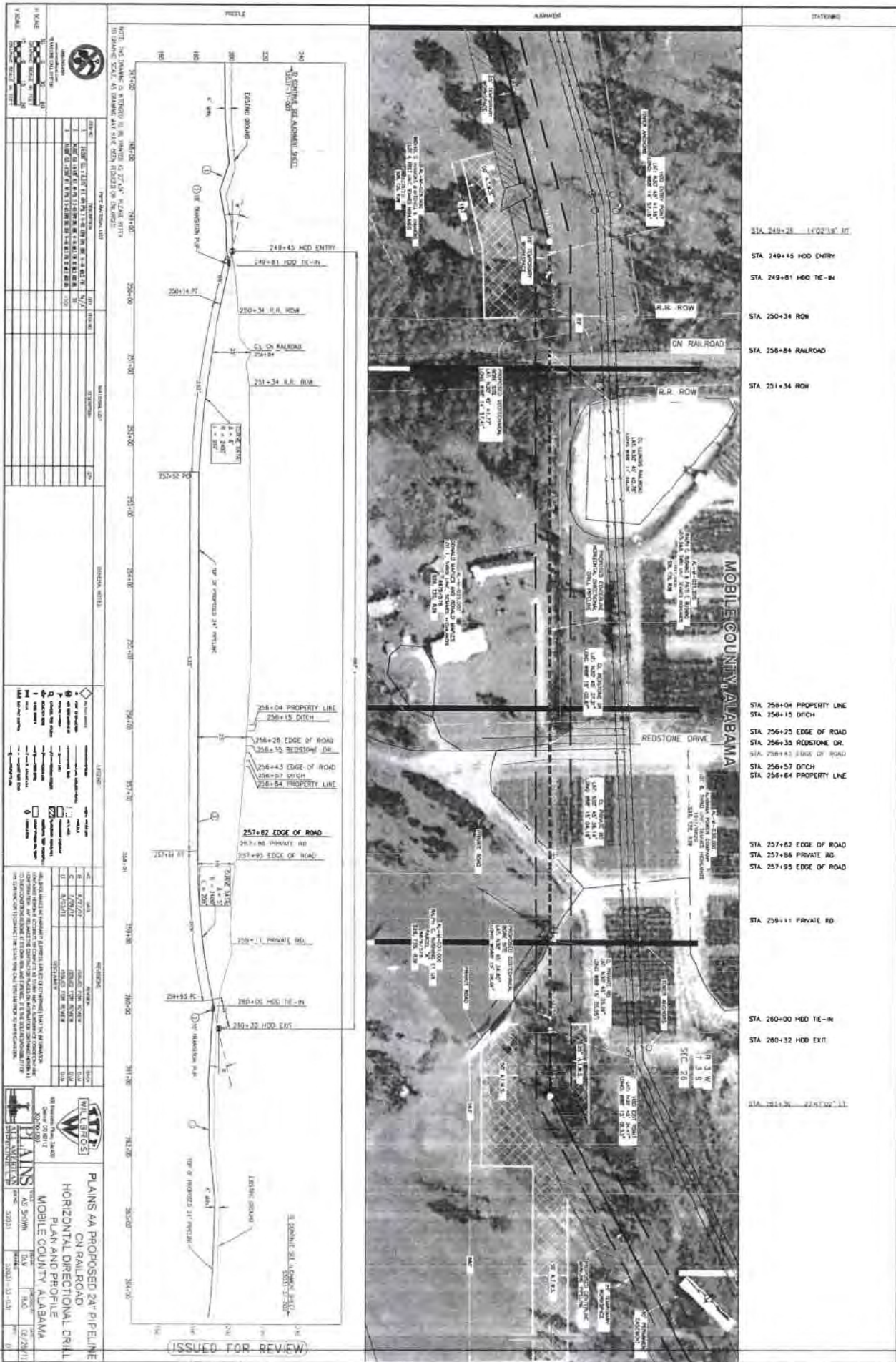
Path: C:\Users\rabasas\Desktop\My Projects\22812_Pascapoula_Pipeline\MAPS\Map\Report Maps\PCN 3_12065012\PCN3_Vicinity map_12065012.mxd

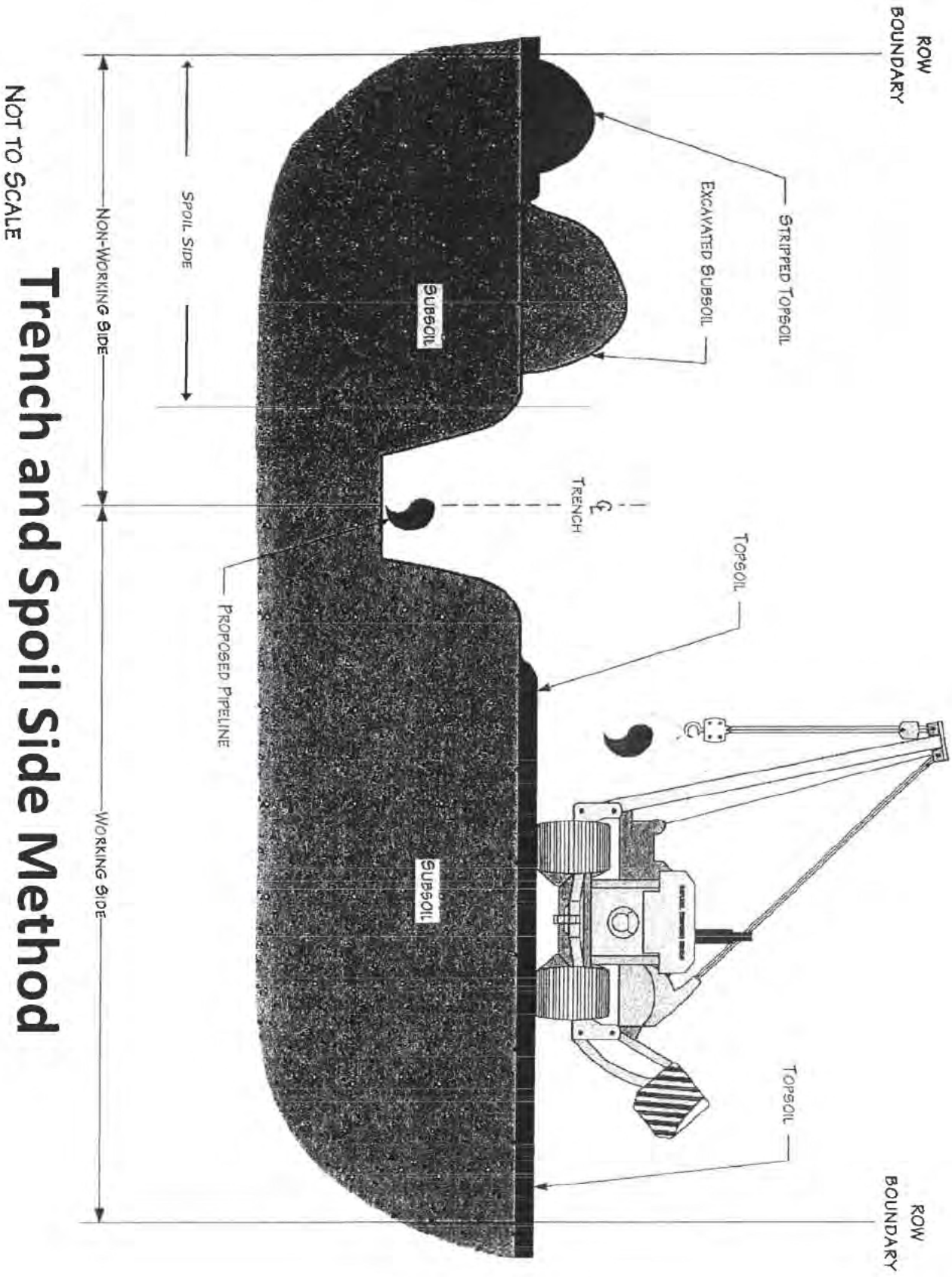


WILLIAMS
PLANS
 HORIZONTAL DIRECTIONAL DRILL
 PLAN AND PROFILE
 MOBILE COUNTY, ALABAMA

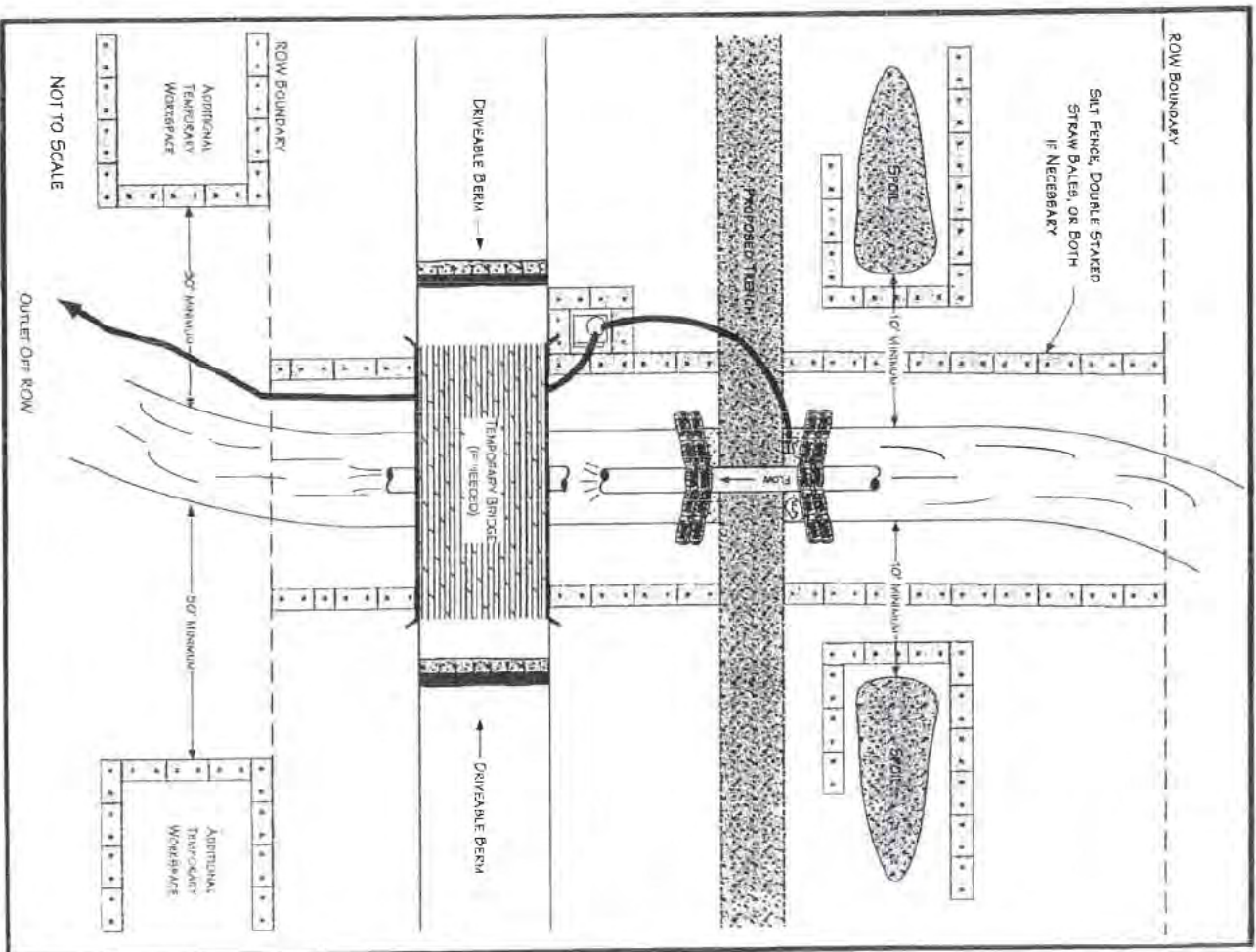
US HIGHWAY 217
 MOBILE COUNTY, ALABAMA

DATE: 03/23/11
 SCALE: 1"=40'

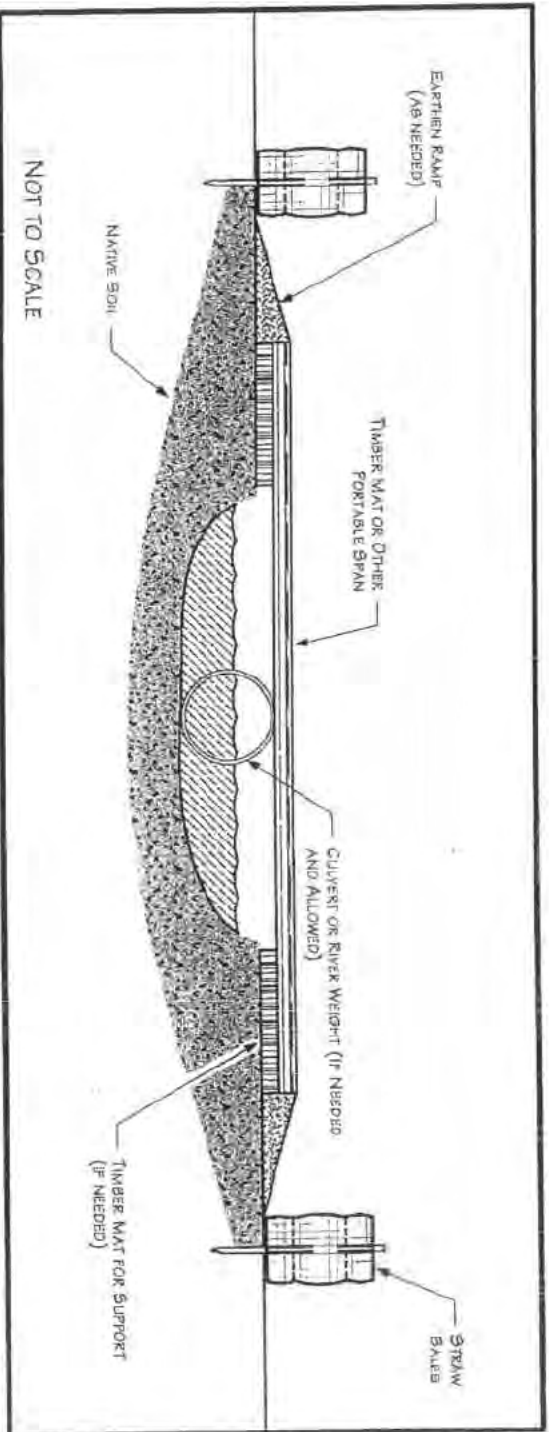




Flumed Waterbody Crossing Method



Equipment Bridge



Performance Criteria

- Design, construct, and maintain to
 - Provide unrestricted flow
 - Withstand and pass highest expected flows
 - Prevent soil from entering waterbody
- Align culverts to prevent bank erosion or streambed scour
- Install energy-dissipating devices downstream of culverts, if necessary



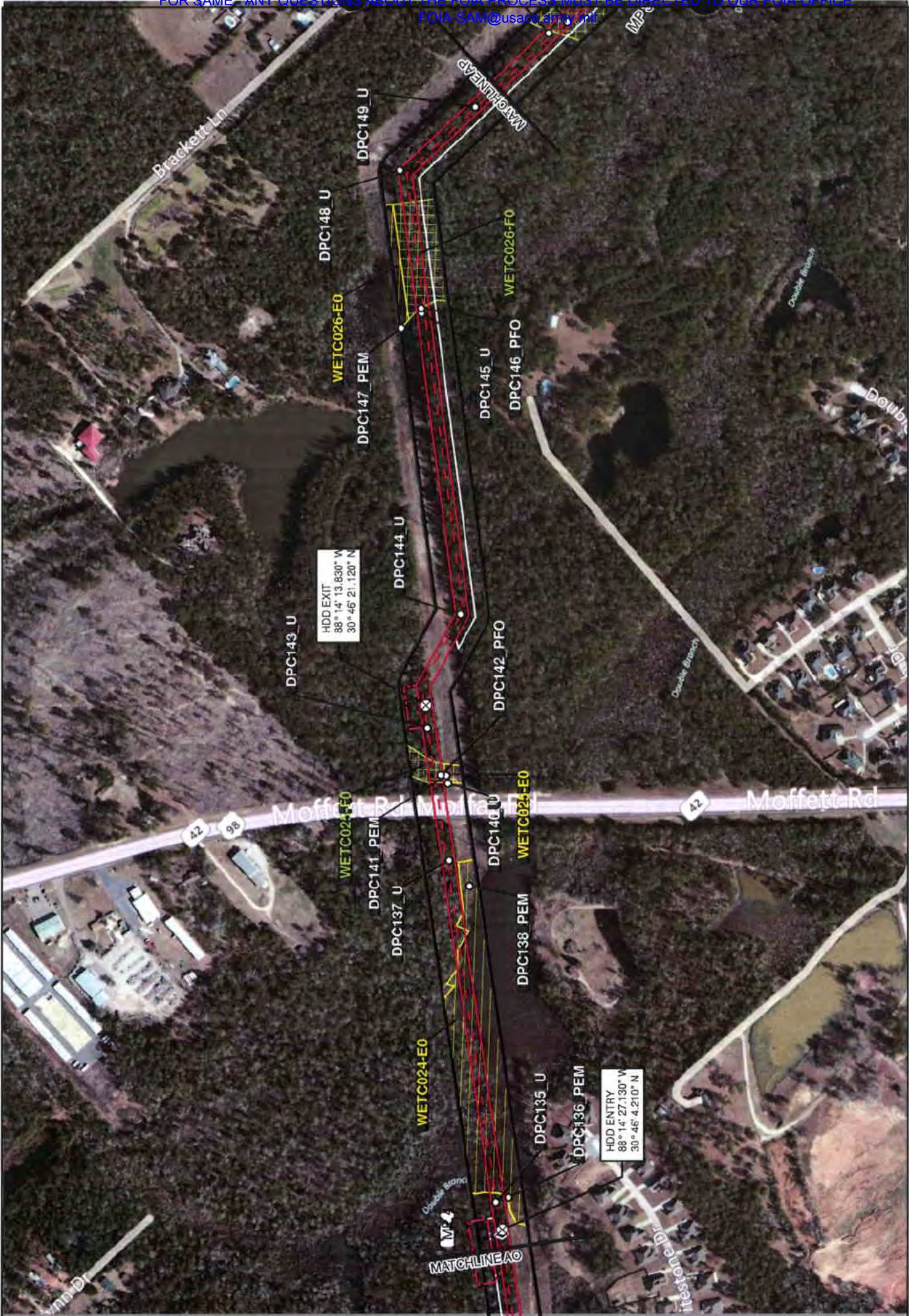
PLANNING SOLUTIONS GROUP, L.L.C.
WETLAND Delineation Map
401-MILE LONG TERN NILE PASSAGEWAY PROJECT

MOBILE DISTRICT
 ENVIRONMENTAL CONSULTANTS
 Sheet 5 of 47

COMMENT:
USACE MOBILE DISTRICT

<p>Centerline Permanent Row Temporary Row Additional Workspace 200' Survey Unsurveyed Areas</p>	<p>PEM PFO PSS EEM Streams</p>	<p>Sample Point Milepost HDD Entry/Exit</p>
---	--	---

Background: Bing Maps Hybrid 2012
 Mapper: JF
 Approved By: [Redacted]
 SWCA Project No: 2002
 Date Produced: 8/20/2012
 Revision Date: [Redacted]



Background: Bing Maps Hybrid (2012)
 Mapper: JF
 Approved By: Preliminary Data
 Date Produced: 02/02/14
 Revision date:
 500 Feet
 1 200 500 Feet
 Coordinate System: NAD 1983 UTM Zone 18N
 Unit: Feet US



COMMENT:
 USACE MOBILE DISTRICT

- Sample Point
- Mirepost
- HDD Entry/Exit
- PEM
- PFO
- PSS
- EEM
- Streams
- Centerline
- Permanent ROW
- Temporary ROW
- Additional Workspace
- 200' Survey
- Unsurveyed Areas

PLANNING SOUTH CAROLINA P.L.L.C.
 WETLAND DELINEATION MAP
 4.47-MILE LONG TEN-MILE FACILITY TID
 PASSAGE LULAI RIVER PRELIMINARY PROJECT
 MOBILE COUNTY, AL

SWCA
 ENVIRONMENTAL CONSULTANTS
 Sheet 6 of 47



HDD EXIT
88° 15' 6.530" W
30° 45' 34.470" N

HDD ENTRY
88° 14' 57.180" W
30° 45' 41.960" N

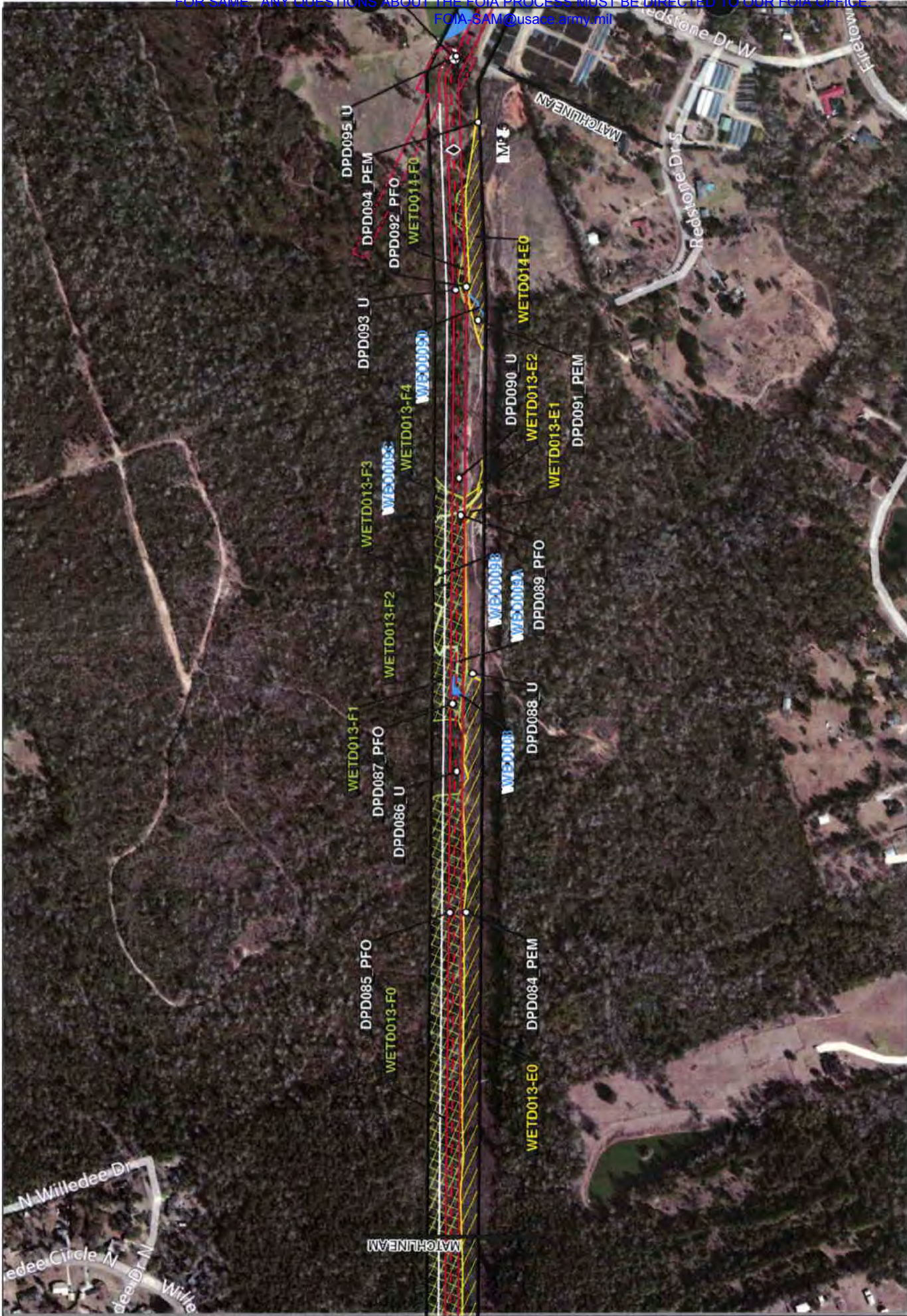
Background: Bing Maps Hybrid (2012)
Mapset: JPL
Approved By: Project No. 22033
SWCA Project No. 22033
Date Produced: 6/26/2013
Revision Date:
Revision No.:
Scale: 1" = 200' Feet
Drawing Scale: 1" = 200' Feet
Drawing Title: USACE MOBILE DISTRICT



COMMENT:
USACE MOBILE DISTRICT

- Sample Point
- ◆ Milepost
- ⊕ HDD Entry/Exit
- PEM
- PFC
- PSS
- EEM
- Streams
- Centerline
- Permanent ROW
- Temporary ROW
- Additional Workspace
- 200' Survey
- Unsurveyed Areas

FLORIAN SOUTHCOAST ILLC.
WETLAND DELINEATION MAP
4417 MILES LONG TERN WILIE FACILITY TID
PASSAGE WILIE FACILITY PROJECT
MOBILE COUNTY, AL



Background: Bing Maps Hybrid (2012)
 Mapper: JF
 Approved By: Project No: 22822
 SWCA Project No: 22822
 Date Produced: 8/26/2013
 Revision Data:
 0 500 1000 Feet
 Geographic North (NAD 1983) True (T)



COMMENT:
 USACE MOBILE DISTRICT

Centerline	Sample Point
Permanent Row	Milepost
Temporary Row	HDD Entry/Exit
Additional Workspace	
200' Survey	
Unsurveyed Areas	
PEM	Streams
PFO	
PSS	
EEM	

FLANNERS SOUTHCOAST, LLC.
WETLAND DELINEATION MAP
4471 MILES-LONGS TERN-WILIE FACILITY TD
PROPOSED WILIE FACILITY PRELIMINE PROJECT
MOBILE COUNTY, AL

SWCA
 ENVIRONMENTAL CONSULTANTS
 Sheet 8 of 47



Background: Bing Maps Hybrid 2012
 Mapper: JF
 Approved By: Paul H. [unreadable]
 SWCA Project No: 2012-001
 Date Produced: 02/02/12
 Revision Date: [unreadable]
 Revision Date: [unreadable]

Scale: 1" = 500 Feet

USACE SYSTEMS AND INFORMATION CENTER
 1100 PENTAGON RD
 FORT BELLEVILLE, IL 62250

COMMENT:
 USACE MOBILE DISTRICT

- Legend:
- Centerlines
 - Perennial Row
 - Temporary Row
 - Additional Workspace
 - 200' Survey
 - Unsurveyed Areas
 - PEM
 - PFO
 - PSS
 - EEM
 - Streams
 - Sample Point
 - Wetcast
 - HOD Entry/Exit

PLAINS SOUTHCAP LLC
WETLAND DELINEATION MAP
4.5-MILE-LONG TERN WILIE FACILITY TO
PASSAGE TO LA PRRI LINE PROJECT
MOBILE COUNTY, AL

SWCA
 ENVIRONMENTAL CONSULTANTS

Sheet 9 of 47



<p>Background Bing Map Hybrid, 2019 Approved By: Preliminary Draft SWCA Project No: 22933 Date Produced: 8/20/2015 Revision Date: 300 Feet 0 100 200 USACE/US Army, NAD 1983 (79) Zone 18W Date: 8/20/15</p>	<p>COMMENT: USACE MOBILE DISTRICT</p>
<p>Centerline Permanent RoW Temporary RoW Additional Workspace 200' Survey Unserved Areas</p>	<p>Sample Point Milepost HDD Entry/Exit</p> <p>PEM PFO PSS EEM Streams</p>
<p>PLAINS SOUTHCAP L.L.C. WETLAND DETERMINATION MAP 447-MILE-LONG TEN-MILE FACILITY TO PASSAGE DUAL PRELINE PRODUCT MOBILE COUNTY, AL</p>	
<p>SWCA ENVIRONMENTAL CONSULTANTS Sheet 11 of 47</p>	